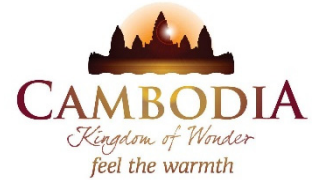




KINGDOM OF CAMBODIA  
NATION RELIGION KING



# TOURISM STATISTICS REPORT

# April 2021

**MINISTRY OF TOURISM**  
NATIONAL INSTITUTE OF TOURISM  
TOURISM STATISTICS DEPARTMENT  
No. A3, Street 169, Sangkat Veal Vong, Khan 7 Makara, Phnom Penh, Cambodia.  
Telegram Chanel: Tourism\_Statistics  
E-mail: [kong@tourism.gov.kh](mailto:kong@tourism.gov.kh)  
Website: [www.tourism.gov.kh](http://www.tourism.gov.kh)

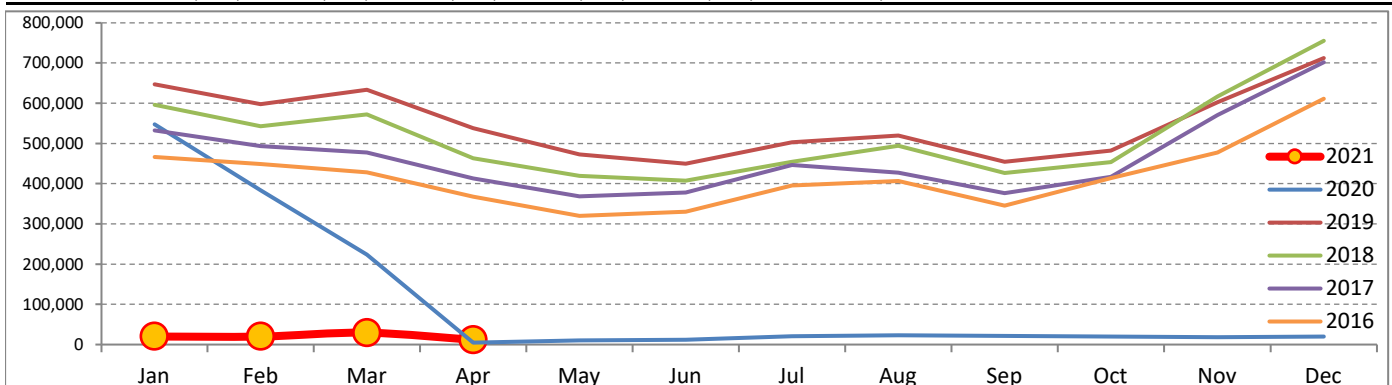
## Tourism Highlights

Int'l Tourist Arrivals, Average Length of Stays, Hotel Occupancy & Int'l Tourism Receipts in 1993 - 2020

Years	Int'l Tourist Arrivals		Average Length	Hotel Occupancy	Int'l Tourism Receipts
	Number	Change (%)	of Stays (Days)	(%)	(Million USD)
1993	118,183	-	N/A	N/A	N/A
1994	176,617	49.4	N/A	N/A	N/A
1995	219,680	24.4	8.0	37.0	100
1996	260,489	18.6	7.5	40.0	118
1997	218,843	-16.0	6.4	30.0	103
1998	286,524	30.9	5.2	40.0	166
1999	367,743	28.3	5.5	44.0	190
2000	466,365	26.8	5.5	45.0	228
2001	604,919	29.7	5.5	48.0	304
2002	786,524	30.0	5.8	50.0	379
2003	701,014	-10.9	5.5	50.0	347
2004	1,055,202	50.5	6.3	52.0	578
2005	1,421,615	34.7	6.3	52.0	832
2006	1,700,041	19.6	6.5	54.8	1,049
2007	2,015,128	18.5	6.5	54.8	1,400
2008	2,125,465	5.5	6.7	62.7	1,595
2009	2,161,577	1.7	6.5	63.6	1,561
2010	2,508,289	16.0	6.5	65.7	1,786
2011	2,881,862	14.9	6.5	66.2	1,912
2012	3,584,307	24.4	6.3	68.5	2,210
2013	4,210,165	17.5	6.8	69.5	2,547
2014	4,502,775	7.0	6.5	67.6	2,736
2015	4,775,231	6.1	6.8	70.2	3,012
2016	5,011,712	5.0	6.3	68.9	3,212
2017	5,602,157	11.8	6.6	71.3	3,638
2018	6,201,077	10.7	7.0	72.2	4,375
2019	6,610,592	6.6	6.2	63.5	4,919
2020	1,306,143	-80.2	Jan - Mar: 6.2 Apr - Dec: 30.0	Jan - Mar: 78.9 Apr - Dec: 8.3	1,023

### International Tourist Arrivals to Cambodia

Months	2016	2017	2018	2019	2020	2021	Change (%)				
							17/16	18/17	19/18	20/19	2021*/20
<b>Q1</b>	<b>1,342,477</b>	<b>1,502,896</b>	<b>1,711,253</b>	<b>1,877,853</b>	<b>1,155,226</b>	<b>70,901</b>	<b>11.9</b>	<b>13.9</b>	<b>9.7</b>	<b>-38.5</b>	<b>-93.9</b>
Jan	466,086	532,206	596,241	647,206	547,963	20,567	14.2	12.0	8.5	-15.3	-96.2
Feb	448,468	493,316	542,937	597,483	383,863	20,580	10.0	10.1	10.0	-35.8	-94.6
Mar	427,923	477,374	572,075	633,164	223,400	29,754	11.6	19.8	10.7	-64.7	-86.7
<b>Q2</b>	<b>1,018,455</b>	<b>1,159,783</b>	<b>1,290,407</b>	<b>1,460,621</b>	<b>27,600</b>	<b>11,938</b>	<b>13.9</b>	<b>11.3</b>	<b>13.2</b>	<b>-98.1</b>	
Apr	367,684	412,925	463,423	537,656	4,841	11,938	12.3	12.2	16.0	-99.1	146.6
May	320,601	368,809	419,171	472,952	10,475		15.0	13.7	12.8	-97.8	
Jun	330,170	378,049	407,813	450,013	12,284		14.5	7.9	10.3	-97.3	
<b>Q3</b>	<b>1,147,483</b>	<b>1,250,082</b>	<b>1,374,373</b>	<b>1,475,832</b>	<b>64,854</b>	<b>0</b>	<b>8.9</b>	<b>9.9</b>	<b>7.4</b>	<b>-95.6</b>	
Jul	395,761	446,627	454,056	502,421	20,689		12.9	1.7	10.7	-95.9	
Aug	406,214	427,224	494,043	519,502	23,028		5.2	15.6	5.2	-95.6	
Sep	345,508	376,231	426,274	453,909	21,137		8.9	13.3	6.5	-95.3	
<b>Q4</b>	<b>1,503,297</b>	<b>1,689,396</b>	<b>1,825,044</b>	<b>1,796,286</b>	<b>58,463</b>	<b>0</b>	<b>12.4</b>	<b>8.0</b>	<b>-1.6</b>	<b>-96.7</b>	
Oct	414,077	417,039	453,370	481,782	20,210		0.7	8.7	6.3	-95.8	
Nov	477,686	570,471	616,549	602,042	18,184		19.4	8.1	-2.4	-97.0	
Dec	611,534	701,886	755,125	712,462	20,069		14.8	7.6	-5.6	-97.2	
<b>Total</b>	<b>5,011,712</b>	<b>5,602,157</b>	<b>6,201,077</b>	<b>6,610,592</b>	<b>1,306,143</b>	<b>82,839</b>	<b>11.8</b>	<b>10.7</b>	<b>6.6</b>	<b>-80.2</b>	<b>-92.9</b>



Source: Tourism Statistics Department, MOT.

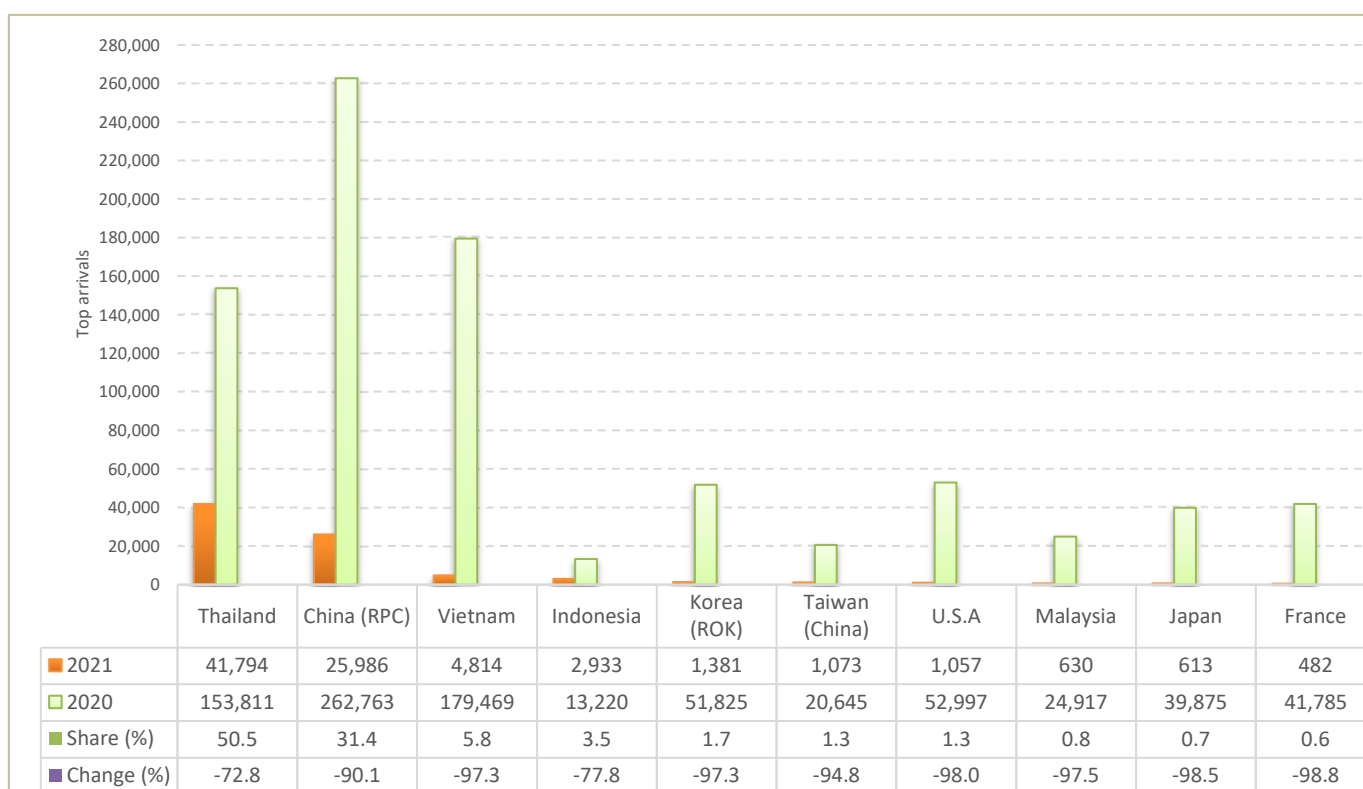
## CAMBODIA: TOURISM STATISTICS REPORT IN THE FIRST FOUR MONTHS 2021

### I. INBOUND TOURISM

#### 1. International tourist arrivals in January - April 2021

	Inbound tourism			Share (%)	Change (%)	
	2019	2020	2021	2021*	20/19	2021*/20
<b>Air</b>	<b>1,676,058</b>	<b>667,387</b>	<b>38,346</b>	<b>46.3</b>	<b>-60.2</b>	<b>-94.3</b>
Phnom Penh Int'l Airport (PNH)	758,786	368,403	31,369	37.9	-51.4	-91.5
Siem Reap Int'l Airport (REP)	730,074	240,811	2	0.0	-67.0	-100.0
Kong Keng (KOS)	187,198	58,173	6,975	8.4	-68.9	-88.0
<b>Land and Waterways</b>	<b>739,451</b>	<b>492,680</b>	<b>44,493</b>	<b>53.7</b>	<b>-33.4</b>	<b>-91.0</b>
Land	659,561	441,191	44,491	53.7	-33.1	-89.9
Waterways	79,890	51,489	2	0.0	-35.6	-100.0
<b>Total</b>	<b>2,415,509</b>	<b>1,160,067</b>	<b>82,839</b>	<b>100.0</b>	<b>-52.0</b>	<b>-92.9</b>

#### 2. Top ten markets arrivals in January - April 2021



### II. OUTBOUND TOURISM

#### Outbound tourism in January - April 2021

	Outbound tourism			Change (%)	
	2019	2020	2021	20/19	2021*/20
Cambodia Outbound Tourists	660,364	309,431	6,969	-53.1	-97.7
International Tourists Departure	2,169,029	1,206,438	80,748	-44.4	-93.3

### III. INTERNAL TOURISM

#### Domestic and foreign visitors' arrivals to the regions in January - April 2021

	January - April 2020		January - April 2021		Change 2021*/20 (%)	
	KHM	FOR	KHM	FOR	KHM	FOR
Phnom Penh	661,546	775,750	374,196	71,494	-43.4	-90.8
Siem Reap Angkor	164,711	384,317	115,255	4,528	-30.0	-98.8
Coastal Zone	1,041,884	289,924	906,372	44,011	-13.0	-84.8
Preah Sihanouk	258,499	178,270	532,380	37,282	106.0	-79.1
Eco-tourism Zone	167,847	20,666	142,736	2,178	-15.0	-89.5
<b>Total</b>	<b>2,035,988</b>	<b>1,470,657</b>	<b>1,538,559</b>	<b>122,211</b>	<b>-24.4</b>	<b>-91.7</b>

#### Note:

KHM: Cambodia visitors

FOR: Foreign visitors

Source: Tourism Statistics Department, MOT.

## International Tourist Arrivals to Cambodia by Country of Residence in January - April 2021

(by all means of transportation)

Regions Country of Residence	2020	2021					Share 2021* (%)	Change 2021*/20 (%)
		Purposes of Visit			Total			
		Holiday	Business	Others	Female			
<b>Grand Total</b>	<b>1,160,067</b>	<b>40,349</b>	<b>39,889</b>	<b>2,601</b>	<b>82,839</b>	<b>9,587</b>	<b>100.0</b>	<b>-92.9</b>
<b>Asia and the Pacific</b>	<b>854,560</b>	<b>40,239</b>	<b>38,359</b>	<b>1,679</b>	<b>80,277</b>	<b>8,621</b>	<b>96.9</b>	<b>-90.6</b>
<b>ASEAN (Southeast Asia)</b>	<b>433,563</b>	<b>39,976</b>	<b>9,399</b>	<b>1,310</b>	<b>50,685</b>	<b>3,279</b>	<b>61.2</b>	<b>-88.3</b>
Brunei Darussalam	144	0	0	0	0	0	0.0	-100.0
Indonesia	13,220	26	2,902	5	2,933	559	3.5	-77.8
Lao PDR	34,287	0	33	0	33	6	0.0	-99.9
Malaysia	24,917	40	575	15	630	107	0.8	-97.5
Myanmar	2,949	14	54	2	70	32	0.1	-97.6
Philippines	14,329	39	215	15	269	120	0.3	-98.1
Singapore	10,417	9	129	4	142	32	0.2	-98.6
Thailand	153,811	39,824	722	1,248	41,794	946	50.5	-72.8
Timor Leste	20	0	0	0	0	0	0.0	-100.0
Vietnam	179,469	24	4,769	21	4,814	1,477	5.8	-97.3
<b>Northeast Asia</b>	<b>375,696</b>	<b>230</b>	<b>28,564</b>	<b>272</b>	<b>29,066</b>	<b>5,210</b>	<b>35.1</b>	<b>-92.3</b>
China	262,763	122	25,749	115	25,986	4,508	31.4	-90.1
Hong Kong (China)	271	0	3	0	3	1	0.0	-98.9
Japan	39,875	3	586	24	613	147	0.7	-98.5
Korea (ROK)	51,825	43	1,219	119	1,381	336	1.7	-97.3
Macau (China)	30	0	0	0	0	0	0.0	-100.0
Mongolia	287	3	5	2	10	0	0.0	-96.5
Taiwan (China)	20,645	59	1,002	12	1,073	218	1.3	-94.8
<b>Southern Asia</b>	<b>17,162</b>	<b>30</b>	<b>269</b>	<b>9</b>	<b>308</b>	<b>58</b>	<b>0.4</b>	<b>-98.2</b>
Afghanistan	47	0	1	0	1	0	0.0	-97.9
Bangladesh	1,609	0	41	4	45	6	0.1	-97.2
Bhutan	42	0	1	0	1	0	0.0	-97.6
India	12,680	7	128	1	136	35	0.2	-98.9
Iran	279	6	3	0	9	1	0.0	-96.8
Nepal	673	0	9	2	11	2	0.0	-98.4
Pakistan	1,099	0	24	0	24	4	0.0	-97.8
Srilanka	733	17	62	2	81	10	0.1	-88.9
<b>Oceania</b>	<b>27,657</b>	<b>3</b>	<b>125</b>	<b>87</b>	<b>215</b>	<b>74</b>	<b>0.3</b>	<b>-99.2</b>
Australia	23,241	2	104	51	157	55	0.2	-99.3
Fiji	73	0	0	0	0	0	0.0	-100.0
New Zealand	4,343	1	21	36	58	19	0.1	-98.7
Other Asia & the Pacific	482	0	2	1	3	0	0.0	-99.4
<b>Europe</b>	<b>221,270</b>	<b>61</b>	<b>915</b>	<b>242</b>	<b>1,218</b>	<b>461</b>	<b>1.5</b>	<b>-99.4</b>
<b>Northern Europe</b>	<b>60,875</b>	<b>6</b>	<b>215</b>	<b>15</b>	<b>236</b>	<b>81</b>	<b>0.3</b>	<b>-99.6</b>
Denmark	4,313	1	21	2	24	9	0.0	-99.4
Finland	2,074	0	5	2	7	4	0.0	-99.7
Iceland	224	0	0	0	0	0	0.0	-100.0
Ireland	2,579	0	10	0	10	1	0.0	-99.6
Norway	2,772	0	4	1	5	1	0.0	-99.8
Sweden	4,653	0	20	3	23	5	0.0	-99.5
United Kingdom	44,260	5	155	7	167	61	0.2	-99.6
<b>Western Europe</b>	<b>88,525</b>	<b>38</b>	<b>503</b>	<b>215</b>	<b>756</b>	<b>296</b>	<b>0.9</b>	<b>-99.1</b>
Austria	3,509	0	7	1	8	1	0.0	-99.8
Belgium	4,171	2	20	6	28	12	0.0	-99.3
France	41,785	26	286	170	482	197	0.6	-98.8
Germany	26,928	10	128	17	155	52	0.2	-99.4
Luxembourg	184	0	0	0	0	0	0.0	-100.0
Monaco	27	0	0	0	0	0	0.0	-100.0
Netherlands	6,410	0	35	6	41	15	0.0	-99.4
Switzerland	5,511	0	27	15	42	19	0.1	-99.2
<b>Central / Eastern Europe</b>	<b>43,825</b>	<b>10</b>	<b>106</b>	<b>5</b>	<b>121</b>	<b>50</b>	<b>0.1</b>	<b>-99.7</b>
Bulgaria	928	0	4	0	4	3	0.0	-99.6
Czech Republic	2,322	0	7	1	8	6	0.0	-99.7
Estonia	529	0	0	0	0	0	0.0	-100.0
Hungary	2,776	0	5	0	5	2	0.0	-99.8
Kazakhstan	619	1	9	0	10	5	0.0	-98.4
Kyrgyzstan	140	0	0	0	0	0	0.0	-100.0
Latvia	368	0	1	0	1	1	0.0	-99.7
Lithuania	939	0	0	0	0	0	0.0	-100.0
Poland	7,561	0	16	1	17	5	0.0	-99.8
Romania	1,318	1	8	0	9	6	0.0	-99.3
Russian Federation	21,799	2	32	2	36	13	0.0	-99.8
Slovakia	1,140	2	14	0	16	3	0.0	-98.6
Ukraine	3,112	3	8	1	12	5	0.0	-99.6
Uzbekistan	274	1	2	0	3	1	0.0	-98.9
<b>Southern Europe</b>	<b>20,711</b>	<b>4</b>	<b>71</b>	<b>7</b>	<b>82</b>	<b>26</b>	<b>0.1</b>	<b>-99.6</b>
Croatia	554	0	3	0	3	1	0.0	-99.5
Greece	560	0	3	0	3	0	0.0	-99.5

Source: Tourism Statistics Department, MOT.

## International Tourist Arrivals to Cambodia by Country of Residence in January - April 2021

(by all means of transportation)

Regions Country of Residence	2020	2021					Share 2021* (%)	Change 2021*/20 (%)
		Purposes of Visit			Total			
		Holiday	Business	Others	Total	Female		
<b>Grand Total</b>	<b>1,160,067</b>	<b>40,349</b>	<b>39,889</b>	<b>2,601</b>	<b>82,839</b>	<b>9,587</b>	<b>100.0</b>	<b>-92.9</b>
Italy	10,958	1	34	5	40	10	0.0	-99.6
Malta	125	0	0	0	0	0	0.0	-100.0
Portugal	1,748	1	7	1	9	4	0.0	-99.5
Serbia	513	0	4	0	4	1	0.0	-99.2
Slovenia	521	0	4	0	4	0	0.0	-99.2
Spain	5,732	2	16	1	19	10	0.0	-99.7
<b>East Mediterranean Europe</b>	<b>7,097</b>	<b>3</b>	<b>19</b>	<b>0</b>	<b>22</b>	<b>8</b>	<b>0.0</b>	<b>-99.7</b>
Israel	4,795	1	4	0	5	0	0.0	-99.9
Turkey	2,302	2	15	0	17	8	0.0	-99.3
Other Europe	237	0	1	0	1	0	0.0	-99.6
<b>Americas</b>	<b>79,916</b>	<b>21</b>	<b>520</b>	<b>667</b>	<b>1,208</b>	<b>471</b>	<b>1.5</b>	<b>-98.5</b>
<b>North America</b>	<b>69,684</b>	<b>21</b>	<b>495</b>	<b>663</b>	<b>1,179</b>	<b>462</b>	<b>1.4</b>	<b>-98.3</b>
Canada	15,147	2	63	47	112	44	0.1	-99.3
Mexico	1,540	2	8	0	10	0	0.0	-99.4
United States of America	52,997	17	424	616	1,057	418	1.3	-98.0
<b>Central America</b>	<b>222</b>	<b>0</b>	<b>2</b>	<b>0</b>	<b>2</b>	<b>2</b>	<b>0.0</b>	<b>-99.1</b>
Costa Rica	145	0	0	0	0	0	0.0	-100.0
Honduras	41	0	1	0	1	1	0.0	-97.6
Jamaica	36	0	1	0	1	1	0.0	-97.2
<b>South America</b>	<b>9,878</b>	<b>0</b>	<b>22</b>	<b>4</b>	<b>26</b>	<b>7</b>	<b>0.0</b>	<b>-99.7</b>
Argentina	2,620	0	2	0	2	0	0.0	-99.9
Brazil	3,927	0	12	3	15	4	0.0	-99.6
Chile	1,564	0	1	0	1	0	0.0	-99.9
Colombia	910	0	3	0	3	2	0.0	-99.7
Ecuador	124	0	2	0	2	1	0.0	-98.4
Peru	344	0	0	0	0	0	0.0	-100.0
Uruguay	270	0	1	1	2	0	0.0	-99.3
Venezuela	119	0	1	0	1	0	0.0	-99.2
Other America	132	0	1	0	1	0	0.0	-99.2
<b>Africa</b>	<b>3,114</b>	<b>4</b>	<b>81</b>	<b>9</b>	<b>94</b>	<b>30</b>	<b>0.1</b>	<b>-97.0</b>
<b>North Africa</b>	<b>473</b>	<b>2</b>	<b>3</b>	<b>0</b>	<b>5</b>	<b>4</b>	<b>0.0</b>	<b>-98.9</b>
Morocco	308	2	1	0	3	3	0.0	-99.0
Sudan	39	0	0	0	0	0	0.0	-100.0
Tunisia	126	0	2	0	2	1	0.0	-98.4
<b>Subsaharan Africa</b>	<b>2,604</b>	<b>2</b>	<b>78</b>	<b>9</b>	<b>89</b>	<b>26</b>	<b>0.1</b>	<b>-96.6</b>
Cameroon	81	0	3	0	3	0	0.0	-96.3
Congo	20	0	0	0	0	0	0.0	-100.0
Ghana	252	0	0	0	0	0	0.0	-100.0
Kenya	123	1	4	6	11	4	0.0	-91.1
Liberia	92	0	0	0	0	0	0.0	-100.0
Nigeria	180	0	26	0	26	1	0.0	-85.6
South Africa	1,695	1	36	0	37	15	0.0	-97.8
Tanzania	33	0	0	2	2	0	0.0	-93.9
Uganda	71	0	7	1	8	5	0.0	-88.7
Zimbabwe	57	0	2	0	2	1	0.0	-96.5
Other Africa	37	0	0	0	0	0	0.0	-100.0
<b>Middle East</b>	<b>1,207</b>	<b>24</b>	<b>14</b>	<b>4</b>	<b>42</b>	<b>4</b>	<b>0.1</b>	<b>-96.5</b>
Egypt	278	0	3	1	4	3	0.0	-98.6
Iraq	107	0	0	2	2	0	0.0	-98.1
Jordan	151	0	7	0	7	0	0.0	-95.4
Kuwait	78	1	2	0	3	1	0.0	-96.2
Oman	50	1	0	0	1	0	0.0	-98.0
Palestine	38	0	0	0	0	0	0.0	-100.0
Qatar	17	1	0	0	1	0	0.0	-94.1
Saudi Arabia	89	0	0	0	0	0	0.0	-100.0
Syria	84	1	1	0	2	0	0.0	-97.6
United Arab Emirates	41	20	1	1	22	0	0.0	-46.3
Yemen	250	0	0	0	0	0	0.0	-100.0
Other Middle East	24	0	0	0	0	0	0.0	-100.0

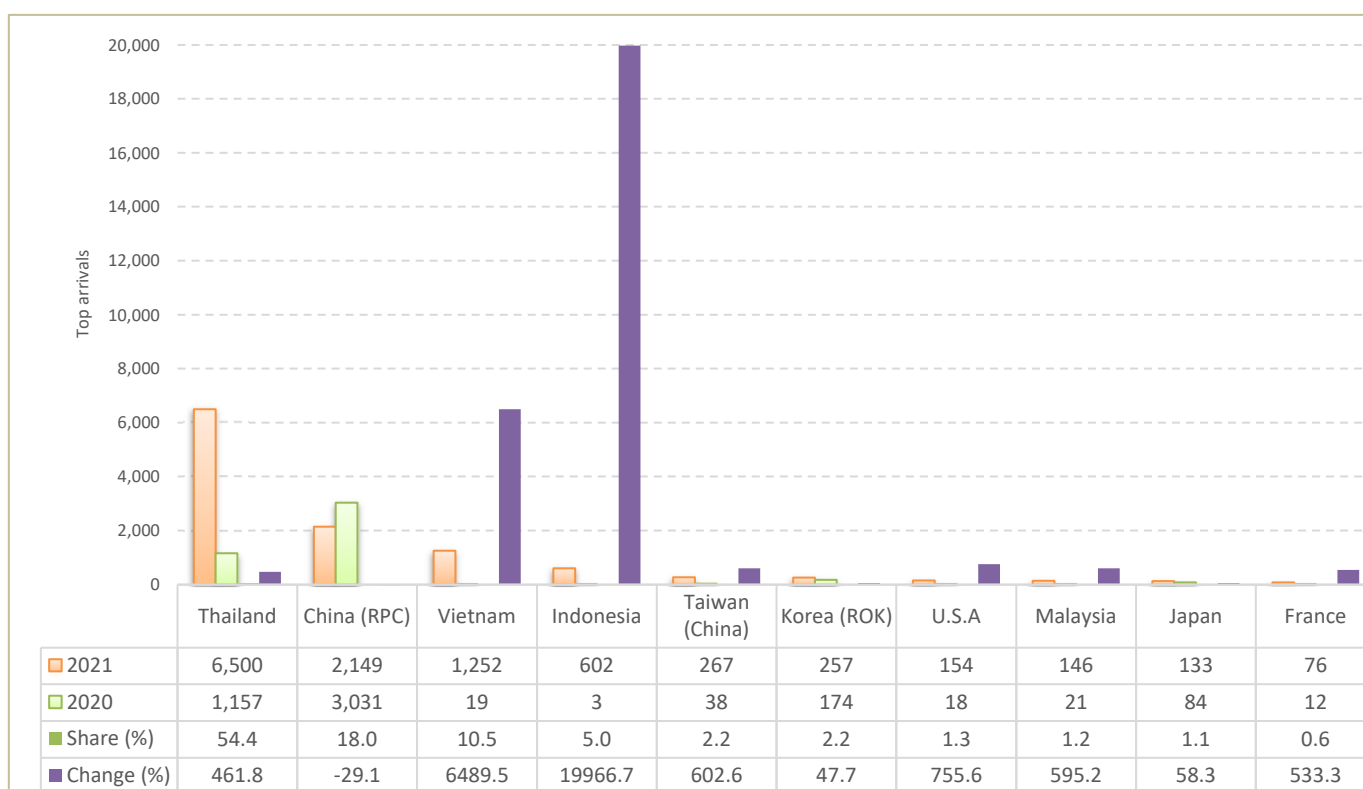
## CAMBODIA: TOURISM STATISTICS REPORT IN APRIL 2021

### I. INBOUND TOURISM

#### 1. International tourist arrivals in April 2021

	Inbound tourism			Share (%)	Change (%)	
	2019	2020	2021	2021*	20/19	2021*/20
<b>Air</b>	<b>376,936</b>	<b>3,746</b>	<b>4,811</b>	<b>40.3</b>	<b>-99.0</b>	<b>28.4</b>
Phnom Penh Int'l Airport (PNH)	177,077	3,088	4,314	36.1	-98.3	39.7
Siem Reap Int'l Airport (REP)	146,195	26	0	0.0	-100.0	-100.0
Kong Keng (KOS)	53,664	632	497	4.2	-98.8	-21.4
<b>Land and Waterways</b>	<b>160,720</b>	<b>1,095</b>	<b>7,127</b>	<b>59.7</b>	<b>-99.3</b>	<b>550.9</b>
Land	147,252	1,095	7,125	59.7	-99.3	550.7
Waterways	13,468	0	2	0.0	-100.0	
<b>Total</b>	<b>537,656</b>	<b>4,841</b>	<b>11,938</b>	<b>100.0</b>	<b>-99.1</b>	<b>146.6</b>

#### 2. Top ten markets arrivals in April 2021



### II. OUTBOUND TOURISM

#### Outbound tourism in April 2021

	Outbound tourism			Change (%)	
	2019	2020	2021	20/19	2021*/20
Cambodia Outbound Tourists	203,488	1,081	1,460	-99.5	35.1
International Tourists Departure	471,400	13,366	17,082	-97.2	27.8

### III. INTERNAL TOURISM

#### Domestic and foreign visitors' arrivals to the regions in April 2021

	April 2020		April 2021		Change 2021*/20 (%)	
	KHM	FOR	KHM	FOR	KHM	FOR
Phnom Penh	69,167	4,187	0	5,075	-100.0	21.2
Siem Reap Angkor	111	654	0	46	-100.0	-93.0
Coastal Zone	31,305	19,894	3,081	1,952	-90.2	-90.2
Preah Sihanouk	14,230	16,520	0	1,844	-100.0	-88.8
Eco-tourism Zone	5,824	119	3,391	35	-41.8	-70.6
<b>Total</b>	<b>106,407</b>	<b>24,854</b>	<b>6,472</b>	<b>7,108</b>	<b>-93.9</b>	<b>-71.4</b>

#### Note:

KHM: Cambodia visitors

FOR: Foreign visitors

Source: Tourism Statistics Department, MOT.

## International Tourist Arrivals to Cambodia by Country of Residence in April 2021

(by all means of transportation)

Regions Country of Residence	2020	2021					Share 2021* (%)	Change 2021*/20 (%)
		Purposes of Visit			Total			
		Holiday	Business	Others	Male	Female		
<b>Grand Total</b>	<b>4,841</b>	<b>6,528</b>	<b>5,253</b>	<b>157</b>	<b>11,938</b>	<b>1,417</b>	<b>100.0</b>	<b>146.6</b>
<b>Asia and the Pacific</b>	<b>4,605</b>	<b>6,501</b>	<b>4,981</b>	<b>42</b>	<b>11,524</b>	<b>1,272</b>	<b>96.5</b>	<b>150.2</b>
<b>ASEAN (Southeast Asia)</b>	<b>1,241</b>	<b>6,422</b>	<b>2,177</b>	<b>10</b>	<b>8,609</b>	<b>751</b>	<b>72.1</b>	<b>593.7</b>
Brunei Darussalam	0	0	0	0	0	0	0.0	
Indonesia	3	10	590	2	602	119	5.0	19966.7
Lao PDR	0	0	0	0	0	0	0.0	
Malaysia	21	18	126	2	146	13	1.2	595.2
Myanmar	5	6	13	1	20	7	0.2	300.0
Philippines	24	15	54	3	72	34	0.6	200.0
Singapore	12	3	14	0	17	5	0.1	41.7
Thailand	1,157	6,366	132	2	6,500	199	54.4	461.8
Timor Leste	0	0	0	0	0	0	0.0	
Vietnam	19	4	1,248	0	1,252	374	10.5	6489.5
<b>Northeast Asia</b>	<b>3,332</b>	<b>72</b>	<b>2,711</b>	<b>24</b>	<b>2,807</b>	<b>502</b>	<b>23.5</b>	<b>-15.8</b>
China	3,031	37	2,107	5	2,149	367	18.0	-29.1
Hong Kong (China)	0	0	1	0	1	1	0.0	
Japan	84	0	128	5	133	37	1.1	58.3
Korea (ROK)	174	13	231	13	257	47	2.2	47.7
Macau (China)	0	0	0	0	0	0	0.0	
Mongolia	5	0	0	0	0	0	0.0	-100.0
Taiwan (China)	38	22	244	1	267	50	2.2	602.6
<b>Southern Asia</b>	<b>16</b>	<b>7</b>	<b>60</b>	<b>0</b>	<b>67</b>	<b>9</b>	<b>0.6</b>	<b>318.8</b>
Afghanistan	0	0	0	0	0	0	0.0	
Bangladesh	0	0	10	0	10	0	0.1	
Bhutan	0	0	0	0	0	0	0.0	
India	5	3	34	0	37	7	0.3	640.0
Iran	3	2	2	0	4	0	0.0	33.3
Nepal	0	0	3	0	3	1	0.0	
Pakistan	0	0	3	0	3	1	0.0	
Srilanka	8	2	8	0	10	0	0.1	25.0
<b>Oceania</b>	<b>16</b>	<b>0</b>	<b>33</b>	<b>8</b>	<b>41</b>	<b>10</b>	<b>0.3</b>	<b>156.3</b>
Australia	11	0	28	4	32	7	0.3	190.9
Fiji	0	0	0	0	0	0	0.0	
New Zealand	5	0	5	4	9	3	0.1	80.0
Other Asia & the Pacific	0	0	0	0	0	0	0.0	
<b>Europe</b>	<b>204</b>	<b>11</b>	<b>165</b>	<b>29</b>	<b>205</b>	<b>70</b>	<b>1.7</b>	<b>0.5</b>
<b>Northern Europe</b>	<b>36</b>	<b>0</b>	<b>33</b>	<b>1</b>	<b>34</b>	<b>14</b>	<b>0.3</b>	<b>-5.6</b>
Denmark	4	0	1	0	1	0	0.0	-75.0
Finland	0	0	0	0	0	0	0.0	
Iceland	0	0	0	0	0	0	0.0	
Ireland	0	0	1	0	1	0	0.0	
Norway	0	0	1	0	1	1	0.0	
Sweden	3	0	4	1	5	2	0.0	66.7
United Kingdom	29	0	26	0	26	11	0.2	-10.3
<b>Western Europe</b>	<b>71</b>	<b>9</b>	<b>97</b>	<b>26</b>	<b>132</b>	<b>42</b>	<b>1.1</b>	<b>85.9</b>
Austria	8	0	1	0	1	0	0.0	-87.5
Belgium	1	1	3	2	6	3	0.1	500.0
France	12	3	52	21	76	27	0.6	533.3
Germany	23	5	25	1	31	9	0.3	34.8
Luxembourg	0	0	0	0	0	0	0.0	
Monaco	0	0	0	0	0	0	0.0	
Netherlands	12	0	13	2	15	3	0.1	25.0
Switzerland	15	0	3	0	3	0	0.0	-80.0
<b>Central / Eastern Europe</b>	<b>46</b>	<b>1</b>	<b>22</b>	<b>1</b>	<b>24</b>	<b>9</b>	<b>0.2</b>	<b>-47.8</b>
Bulgaria	2	0	0	0	0	0	0.0	-100.0
Czech Republic	3	0	0	0	0	0	0.0	-100.0
Estonia	0	0	0	0	0	0	0.0	
Hungary	3	0	2	0	2	1	0.0	-33.3
Kazakhstan	0	0	1	0	1	0	0.0	
Kyrgyzstan	0	0	0	0	0	0	0.0	
Latvia	0	0	0	0	0	0	0.0	
Lithuania	0	0	0	0	0	0	0.0	
Poland	1	0	6	0	6	3	0.1	500.0
Romania	1	0	0	0	0	0	0.0	-100.0
Russian Federation	35	0	10	0	10	4	0.1	-71.4
Slovakia	0	0	1	0	1	0	0.0	
Ukraine	0	0	1	1	2	0	0.0	
Uzbekistan	1	1	1	0	2	1	0.0	100.0
<b>Southern Europe</b>	<b>47</b>	<b>0</b>	<b>10</b>	<b>1</b>	<b>11</b>	<b>4</b>	<b>0.1</b>	<b>-76.6</b>
Croatia	0	0	1	0	1	1	0.0	
Greece	2	0	1	0	1	0	0.0	-50.0

Source: Tourism Statistics Department, MOT.

## International Tourist Arrivals to Cambodia by Country of Residence in April 2021

(by all means of transportation)

Regions Country of Residence	2020	2021					Share 2021* (%)	Change 2021*/20 (%)
		Purposes of Visit			Total	Female		
		Holiday	Business	Others				
<b>Grand Total</b>	<b>4,841</b>	<b>6,528</b>	<b>5,253</b>	<b>157</b>	<b>11,938</b>	<b>1,417</b>	<b>100.0</b>	<b>146.6</b>
Italy	4	0	3	1	4	1	0.0	0.0
Malta	0	0	0	0	0	0	0.0	
Portugal	13	0	2	0	2	1	0.0	-84.6
Serbia	1	0	0	0	0	0	0.0	-100.0
Slovenia	0	0	1	0	1	0	0.0	
Spain	27	0	2	0	2	1	0.0	-92.6
<b>East Mediterranean Europe</b>	<b>4</b>	<b>1</b>	<b>3</b>	<b>0</b>	<b>4</b>	<b>1</b>	<b>0.0</b>	<b>0.0</b>
Israel	0	1	0	0	1	0	0.0	
Turkey	4	0	3	0	3	1	0.0	-25.0
Other Europe	0	0	0	0	0	0	0.0	
<b>Americas</b>	<b>30</b>	<b>5</b>	<b>80</b>	<b>84</b>	<b>169</b>	<b>67</b>	<b>1.4</b>	<b>463.3</b>
<b>North America</b>	<b>28</b>	<b>5</b>	<b>78</b>	<b>84</b>	<b>167</b>	<b>65</b>	<b>1.4</b>	<b>496.4</b>
Canada	7	0	4	5	9	4	0.1	28.6
Mexico	3	1	3	0	4	0	0.0	33.3
United States of America	18	4	71	79	154	61	1.3	755.6
<b>Central America</b>	<b>0</b>	<b>0</b>	<b>2</b>	<b>0</b>	<b>2</b>	<b>2</b>	<b>0.0</b>	
Costa Rica	0	0	0	0	0	0	0.0	
Honduras	0	0	1	0	1	1	0.0	
Jamaica	0	0	1	0	1	1	0.0	
<b>South America</b>	<b>2</b>	<b>0</b>	<b>0</b>	<b>0</b>	<b>0</b>	<b>0</b>	<b>0.0</b>	<b>-100.0</b>
Argentina	0	0	0	0	0	0	0.0	
Brazil	2	0	0	0	0	0	0.0	-100.0
Chile	0	0	0	0	0	0	0.0	
Colombia	0	0	0	0	0	0	0.0	
Ecuador	0	0	0	0	0	0	0.0	
Peru	0	0	0	0	0	0	0.0	
Uruguay	0	0	0	0	0	0	0.0	
Venezuela	0	0	0	0	0	0	0.0	
Other America	0	0	0	0	0	0	0.0	
<b>Africa</b>	<b>1</b>	<b>0</b>	<b>25</b>	<b>1</b>	<b>26</b>	<b>8</b>	<b>0.2</b>	<b>2500.0</b>
<b>North Africa</b>	<b>0</b>	<b>0</b>	<b>0</b>	<b>0</b>	<b>0</b>	<b>0</b>	<b>0.0</b>	
Morocco	0	0	0	0	0	0	0.0	
Sudan	0	0	0	0	0	0	0.0	
Tunisia	0	0	0	0	0	0	0.0	
<b>Subsaharan Africa</b>	<b>1</b>	<b>0</b>	<b>25</b>	<b>1</b>	<b>26</b>	<b>8</b>	<b>0.2</b>	<b>2500.0</b>
Cameroon	0	0	0	0	0	0	0.0	
Congo	0	0	0	0	0	0	0.0	
Ghana	0	0	0	0	0	0	0.0	
Kenya	0	0	0	0	0	0	0.0	
Liberia	0	0	0	0	0	0	0.0	
Nigeria	0	0	6	0	6	0	0.1	
South Africa	1	0	13	0	13	3	0.1	1200.0
Tanzania	0	0	0	1	1	0	0.0	
Uganda	0	0	6	0	6	5	0.1	
Zimbabwe	0	0	0	0	0	0	0.0	
Other Africa	0	0	0	0	0	0	0.0	
<b>Middle East</b>	<b>1</b>	<b>11</b>	<b>2</b>	<b>1</b>	<b>14</b>	<b>0</b>	<b>0.1</b>	<b>1300.0</b>
Egypt	0	0	1	0	1	0	0.0	
Iraq	0	0	0	1	1	0	0.0	
Jordan	0	0	0	0	0	0	0.0	
Kuwait	0	0	0	0	0	0	0.0	
Oman	0	0	0	0	0	0	0.0	
Palestine	0	0	0	0	0	0	0.0	
Qatar	0	0	0	0	0	0	0.0	
Saudi Arabia	0	0	0	0	0	0	0.0	
Syria	0	0	1	0	1	0	0.0	
United Arab Emirates	1	11	0	0	11	0	0.1	1000.0
Yemen	0	0	0	0	0	0	0.0	
Other Middle East	0	0	0	0	0	0	0.0	