



KINGDOM OF CAMBODIA
NATION RELIGION KING



TOURISM STATISTICS REPORT

October 2019

MINISTRY OF TOURISM
NATIONAL INSTITUTE OF TOURISM
TOURISM STATISTICS DEPARTMENT
No. A3, Street 169, Sangkat Veal Vong, Khan 7 Makara, Phnom Penh, Cambodia.
Fax: +855 23 885003
E-mail: kong@tourism.gov.kh
Website: www.tourism.gov.kh

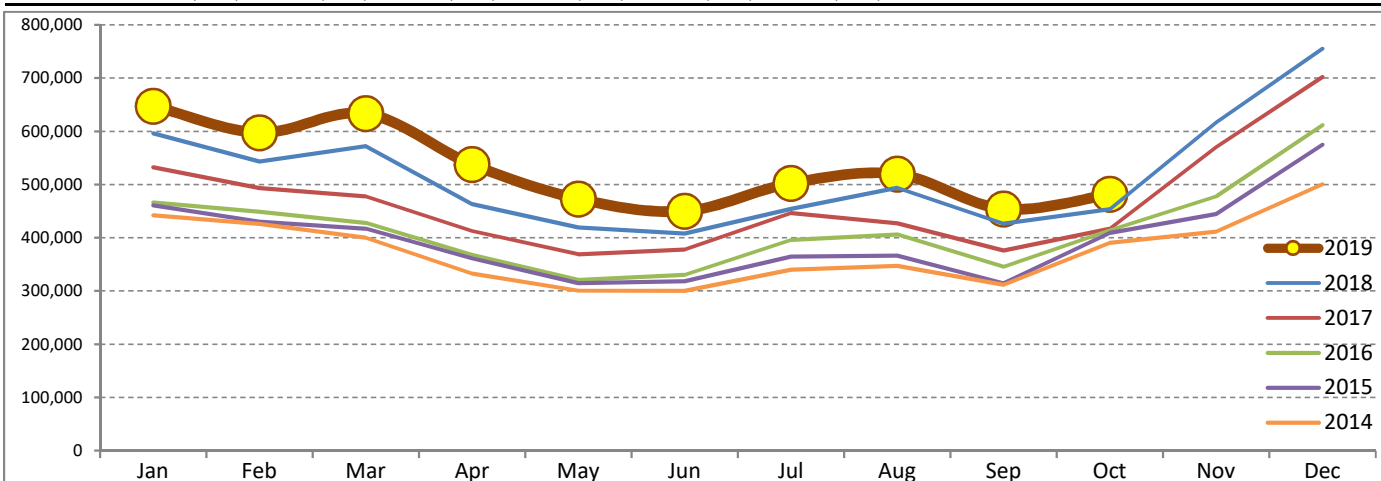
Tourism Highlights

Int'l Tourist Arrivals, Average Length of Stays, Hotel Occupancy & Int'l Tourism Receipts 1993 - 2018

Years	Int'l Tourist Arrivals		Average Length	Hotel Occupancy	Int'l Tourism Receipts
	Number	Change (%)	of Stays (Days)	(%)	(Million US\$)
1993	118,183	-	N/A	N/A	N/A
1994	176,617	49.4	N/A	N/A	N/A
1995	219,680	24.4	8.00	37.0	100
1996	260,489	18.6	7.50	40.0	118
1997	218,843	-16.0	6.40	30.0	103
1998	286,524	30.9	5.20	40.0	166
1999	367,743	28.3	5.50	44.0	190
2000	466,365	26.8	5.50	45.0	228
2001	604,919	29.7	5.50	48.0	304
2002	786,524	30.0	5.80	50.0	379
2003	701,014	-10.9	5.50	50.0	347
2004	1,055,202	50.5	6.30	52.0	578
2005	1,421,615	34.7	6.30	52.0	832
2006	1,700,041	19.6	6.50	54.8	1,049
2007	2,015,128	18.5	6.50	54.8	1,400
2008	2,125,465	5.5	6.65	62.7	1,595
2009	2,161,577	1.7	6.45	63.6	1,561
2010	2,508,289	16.0	6.45	65.7	1,786
2011	2,881,862	14.9	6.50	66.2	1,912
2012	3,584,307	24.4	6.30	68.5	2,210
2013	4,210,165	17.5	6.75	69.5	2,547
2014	4,502,775	7.0	6.50	67.6	2,736
2015	4,775,231	6.1	6.80	70.2	3,012
2016	5,011,712	5.0	6.30	68.9	3,212
2017	5,602,157	11.8	6.60	71.3	3,638
2018	6,201,077	10.7	7.00	72.2	4,375

International Tourist Arrivals to Cambodia

Months	2014	2015	2016	2017	2018	2019	Change (%)				
							15/14	16/15	17/16	18/17	2019*/18
Q1	1,267,922	1,307,836	1,342,477	1,502,896	1,711,253	1,877,853	3.1	2.6	11.9	13.9	9.7
Jan	442,045	460,577	466,086	532,206	596,241	647,206	4.2	1.2	14.2	12.0	8.5
Feb	425,801	430,207	448,468	493,316	542,937	597,483	1.0	4.2	10.0	10.1	10.0
Mar	400,076	417,052	427,923	477,374	572,075	633,164	4.2	2.6	11.6	19.8	10.7
Q2	933,446	994,154	1,018,455	1,159,783	1,290,407	1,460,621	6.5	2.4	13.9	11.3	13.2
Apr	332,690	361,139	367,684	412,925	463,423	537,656	8.6	1.8	12.3	12.2	16.0
May	300,302	314,748	320,601	368,809	419,171	472,952	4.8	1.9	15.0	13.7	12.8
Jun	300,454	318,267	330,170	378,049	407,813	450,013	5.9	3.7	14.5	7.9	10.3
Q3	998,690	1,044,880	1,147,483	1,250,082	1,374,373	1,475,832	4.6	9.8	8.9	9.9	7.4
Jul	340,091	364,325	395,761	446,627	454,056	502,421	7.1	8.6	12.9	1.7	10.7
Aug	347,211	366,096	406,214	427,224	494,043	519,502	5.4	11.0	5.2	15.6	5.2
Sep	311,388	314,459	345,508	376,231	426,274	453,909	1.0	9.9	8.9	13.3	6.5
Q4	1,302,717	1,428,361	1,503,297	1,689,396	1,825,044	481,782	9.6	5.2	12.4	8.0	
Oct	390,637	408,922	414,077	417,039	453,370	481,782	4.7	1.3	0.7	8.7	6.3
Nov	411,501	444,640	477,686	570,471	616,549		8.1	7.4	19.4	8.1	
Dec	500,579	574,799	611,534	701,886	755,125		14.8	6.4	14.8	7.6	
Total	4,502,775	4,775,231	5,011,712	5,602,157	6,201,077	5,296,088	6.1	5.0	11.8	10.7	9.7

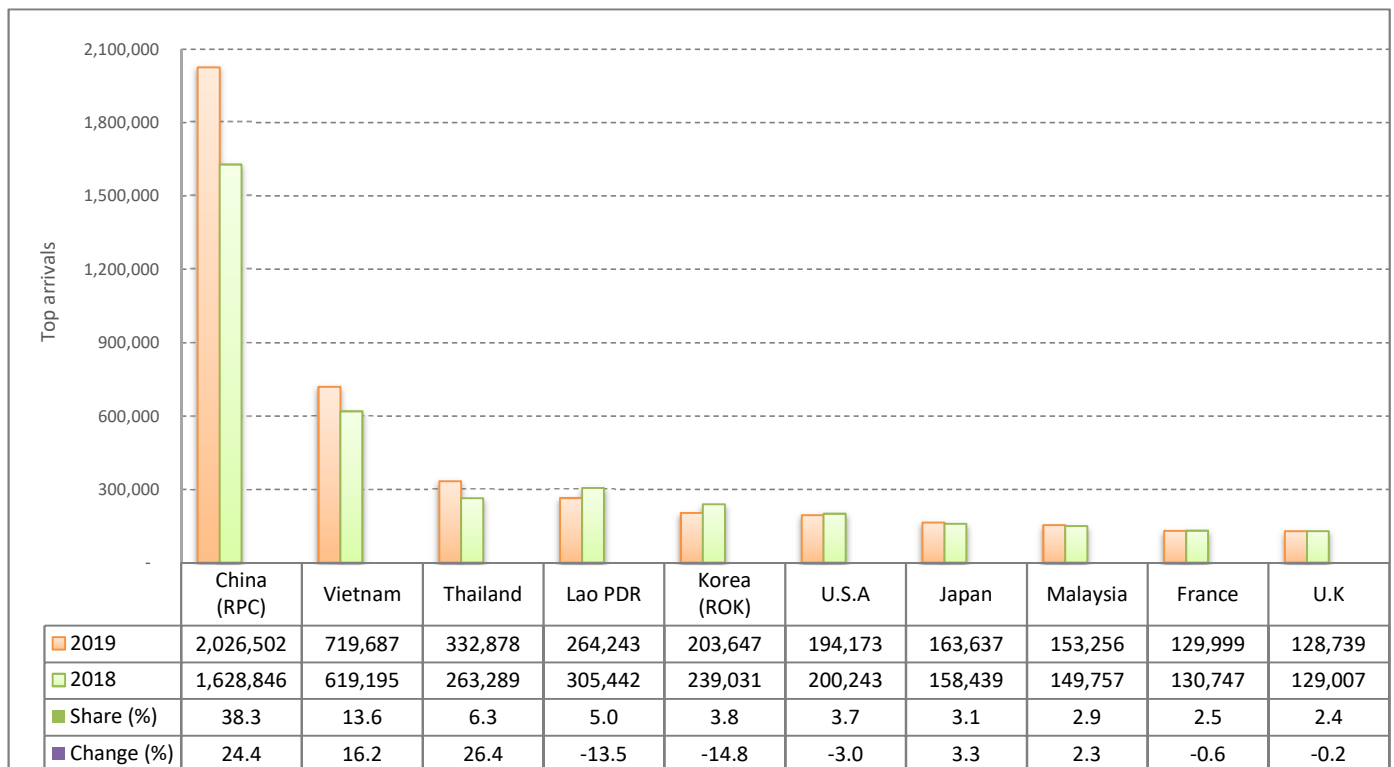


I. INBOUND TOURISM

1. International tourist arrivals in January - October 2019

	Inbound tourism			Share (%) 2019*	Change (%)	
	2017	2018	2019		18/17	2019*/18
Air	2,652,596	3,304,050	3,711,335	70.1	24.6	12.3
Phnom Penh Int'l Airport (PNH)	1,144,213	1,560,993	1,725,915	32.6	36.4	10.6
Siem Reap Int'l Airport (REP)	1,442,666	1,578,317	1,382,665	26.1	9.4	-12.4
Kong Keng (KOS)	65,717	164,740	602,755	11.4	150.7	265.9
Land and Waterways	1,677,204	1,525,353	1,584,753	29.9	-9.1	3.9
Land	1,560,658	1,415,105	1,473,731	27.8	-9.3	4.1
Waterways	116,546	110,248	111,022	2.1	-5.4	0.7
Total	4,329,800	4,829,403	5,296,088	100.0	11.5	9.7

2. Top ten markets arrivals in January - October 2019



II. OUTBOUND TOURISM

Outbound tourism in January - October 2019

	Outbound tourism			Change (%)	
	2017	2018	2019	18/17	2019*/18
Cambodia Outbound Tourists	1,466,271	1,642,708	1,707,892	12.0	4.0
International Tourists Departure	4,146,691	4,649,155	5,112,435	12.1	10.0

III. INTERNAL TOURISM

Foreign visitor arrivals to the regions in January - October 2019

	Arrivals			Share (%) 2019*	Change (%)	
	2017	2018	2019		18/17	2019*/18
Phnom Penh & Surrounding	2,388,968	2,739,350	3,492,081	54.8	14.7	27.5
Siem Reap Angkor	1,940,832	2,090,043	1,804,007	28.3	7.7	-13.7
Coastal Areas	607,780	711,975	1,011,372	15.9	17.1	42.1
Eco-tourism Areas	58,823	61,401	67,009	1.1	4.4	9.1
Total	4,996,403	5,602,769	6,374,469	100.0	12.1	13.8

International Tourist Arrivals to Cambodia by Country of Residence in January - October 2019

(by all means of transportation)

Regions Country of Residence	2018	2019			Total	Female	Share	Change
		Purposes of Visit					2019*	2019*/18
		Holiday	Business	Others			(%)	(%)
Grand Total	4,829,403	3,935,538	1,208,564	151,986	5,296,088	2,188,649	100.0	9.7
Asia and the Pacific	3,866,501	3,155,248	1,164,364	69,218	4,388,830	1,770,655	82.9	13.5
ASEAN (Southeast Asia)	1,525,316	1,517,187	139,984	27,881	1,685,052	756,727	31.8	10.5
Brunei Darussalam	621	860	21	38	919	424	0.0	48.0
Indonesia	42,253	28,249	22,323	1,301	51,873	15,146	1.0	22.8
Lao PDR	305,442	256,718	909	6,616	264,243	110,086	5.0	-13.5
Malaysia	149,757	131,544	19,505	2,207	153,256	47,632	2.9	2.3
Myanmar	16,104	12,123	5,426	643	18,192	7,792	0.3	13.0
Philippines	66,987	66,282	12,341	1,113	79,736	48,607	1.5	19.0
Singapore	61,668	58,414	4,827	1,027	64,268	20,494	1.2	4.2
Thailand	263,289	288,760	35,934	8,184	332,878	131,248	6.3	26.4
Vietnam	619,195	674,237	38,698	6,752	719,687	375,298	13.6	16.2
Northeast Asia	2,146,475	1,480,422	1,008,186	22,769	2,511,377	942,969	47.4	17.0
China	1,628,846	1,081,861	935,902	8,739	2,026,502	747,194	38.3	24.4
Hong Kong (China)	8,565	1,417	145	94	1,656	366	0.0	-80.7
Japan	158,439	134,468	25,415	3,754	163,637	64,288	3.1	3.3
Korea (ROK)	239,031	177,547	19,771	6,329	203,647	85,080	3.8	-14.8
Macau (China)	471	114	39	28	181	37	0.0	-61.6
Mongolia	622	863	55	49	967	453	0.0	55.5
Taiwan (China)	110,501	84,152	26,859	3,776	114,787	45,551	2.2	3.9
Southern Asia	61,531	65,696	9,141	1,113	75,950	19,463	1.4	23.4
Afghanistan	212	245	35	26	306	94	0.0	44.3
Bangladesh	2,473	4,348	1,050	190	5,588	690	0.1	126.0
Bhutan	157	151	19	38	208	75	0.0	32.5
India	49,382	51,358	5,962	413	57,733	16,087	1.1	16.9
Iran	915	919	68	37	1,024	342	0.0	11.9
Nepal	2,456	2,595	477	161	3,233	893	0.1	31.6
Pakistan	2,814	3,275	569	98	3,942	505	0.1	40.1
Sri Lanka	3,122	2,805	961	150	3,916	777	0.1	25.4
Oceania	124,402	90,634	6,622	16,917	114,173	50,638	2.2	-8.2
Australia	104,256	76,453	5,624	13,357	95,434	42,440	1.8	-8.5
Fiji	207	353	65	49	467	175	0.0	125.6
New Zealand	19,939	13,828	933	3,511	18,272	8,023	0.3	-8.4
Other Asia & the Pacific	8,777	1,309	431	538	2,278	858	0.0	-74.0
Europe	650,788	554,627	28,099	32,316	615,042	281,022	11.6	-5.5
Northern Europe	176,963	159,158	8,753	2,606	170,517	74,290	3.2	-3.6
Denmark	10,846	9,163	397	181	9,741	4,506	0.2	-10.2
Finland	6,008	4,060	273	122	4,455	1,921	0.1	-25.8
Iceland	634	617	44	36	697	300	0.0	9.9
Ireland	10,209	9,316	494	125	9,935	4,509	0.2	-2.7
Norway	7,862	6,051	227	206	6,484	2,939	0.1	-17.5
Sweden	12,397	9,416	614	436	10,466	4,286	0.2	-15.6
United Kingdom	129,007	120,535	6,704	1,500	128,739	55,829	2.4	-0.2
Western Europe	270,868	220,711	12,755	27,216	260,682	115,157	4.9	-3.8
Austria	8,905	7,508	303	386	8,197	3,721	0.2	-8.0
Belgium	14,622	13,786	723	777	15,286	7,049	0.3	4.5
France	130,747	100,130	7,408	22,461	129,999	57,935	2.5	-0.6
Germany	76,810	65,188	2,259	1,730	69,177	29,774	1.3	-9.9
Luxembourg	591	679	52	35	766	326	0.0	29.6
Monaco	72	37	13	15	65	18	0.0	-9.7
Netherlands	23,149	20,992	1,196	648	22,836	10,171	0.4	-1.4
Switzerland	15,972	12,391	801	1,164	14,356	6,163	0.3	-10.1
Central / Eastern Europe	101,416	80,285	3,295	1,267	84,847	44,555	1.6	-16.3
Bulgaria	2,325	2,053	89	67	2,209	946	0.0	-5.0
Czech Republic	5,667	5,079	127	82	5,288	2,364	0.1	-6.7
Estonia	2,798	836	47	30	913	391	0.0	-67.4
Hungary	4,209	4,322	130	102	4,554	2,229	0.1	8.2
Kazakhstan	1,672	1,318	329	48	1,695	854	0.0	1.4
Kyrgyzstan	250	230	65	26	321	156	0.0	28.4
Latvia	1,199	937	60	23	1,020	529	0.0	-14.9
Lithuania	1,793	1,582	59	23	1,664	896	0.0	-7.2
Poland	15,532	13,250	261	94	13,605	6,822	0.3	-12.4
Romania	3,045	2,363	126	103	2,592	1,336	0.0	-14.9
Russian Federation	53,678	40,411	1,348	493	42,252	23,319	0.8	-21.3
Slovakia	2,929	2,198	91	57	2,346	1,111	0.0	-19.9
Ukraine	5,843	5,376	457	69	5,902	3,379	0.1	1.0
Uzbekistan	476	330	106	50	486	223	0.0	2.1

Source: Tourism Statistics Department, MOT.

International Tourist Arrivals to Cambodia by Country of Residence in January - October 2019

(by all means of transportation)

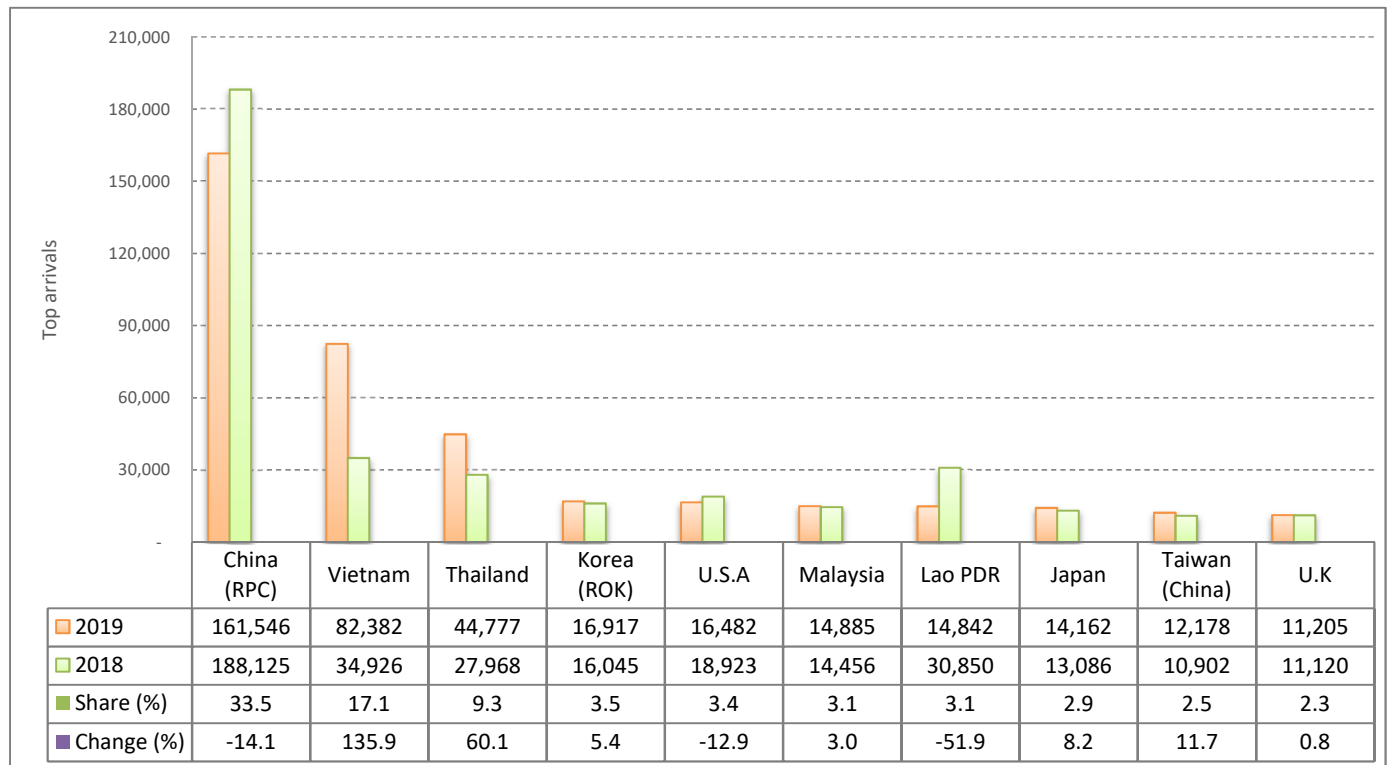
Regions Country of Residence	2018	2019			Total	Female	Share	Change
		Purposes of Visit					2019*	2019*/18
		Holiday	Business	Others			(%)	(%)
Grand Total	4,829,403	3,935,538	1,208,564	151,986	5,296,088	2,188,649	100.0	9.7
Southern Europe	78,080	76,758	2,458	807	80,023	38,692	1.5	2.5
Croatia	1,877	1,000	61	48	1,109	509	0.0	-40.9
Greece	1,593	1,412	65	55	1,532	668	0.0	-3.8
Italy	28,691	29,405	1,207	327	30,939	14,224	0.6	7.8
Malta	389	399	16	19	434	187	0.0	11.6
Portugal	5,512	6,169	191	55	6,415	3,258	0.1	16.4
Serbia	1,015	837	45	43	925	458	0.0	-8.9
Slovenia	1,218	1,133	98	43	1,274	492	0.0	4.6
Spain	37,785	36,403	775	217	37,395	18,896	0.7	-1.0
East Mediterranean Europe	18,242	17,188	662	264	18,114	7,990	0.3	-0.7
Israel	11,777	12,629	317	83	13,029	5,930	0.2	10.6
Turkey	6,465	4,559	345	181	5,085	2,060	0.1	-21.3
Other Europe	5,219	527	176	156	859	338	0.0	-83.5
Americas	297,405	213,199	14,235	49,747	277,181	131,528	5.2	-6.8
North America	256,517	186,521	13,212	49,223	248,956	116,559	4.7	-2.9
Canada	49,181	37,919	2,870	6,077	46,866	21,514	0.9	-4.7
Mexico	7,093	7,628	163	126	7,917	4,094	0.1	11.6
United States of America	200,243	140,974	10,179	43,020	194,173	90,951	3.7	-3.0
Central America	1,669	933	78	56	1,067	522	0.0	-36.1
Costa Rica	1,273	664	25	23	712	346	0.0	-44.1
Honduras	156	113	35	14	162	85	0.0	3.8
Jamaica	240	156	18	19	193	91	0.0	-19.6
South America	37,025	25,475	842	388	26,705	14,273	0.5	-27.9
Argentina	9,798	4,729	77	49	4,855	2,486	0.1	-50.4
Brazil	10,751	7,450	199	72	7,721	4,071	0.1	-28.2
Chile	6,147	5,682	316	49	6,047	3,238	0.1	-1.6
Colombia	6,700	3,284	109	80	3,473	1,900	0.1	-48.2
Ecuador	635	500	31	38	569	273	0.0	-10.4
Peru	1,575	1,442	36	43	1,521	890	0.0	-3.4
Uruguay	1,154	2,001	34	30	2,065	1,187	0.0	78.9
Venezuela	265	387	40	27	454	228	0.0	71.3
Other America	2,194	270	103	80	453	174	0.0	-79.4
Africa	10,545	8,630	1,423	384	10,437	4,538	0.2	-1.0
North Africa	1,176	1,576	81	72	1,729	781	0.0	47.0
Morocco	744	740	39	21	800	344	0.0	7.5
Sudan	179	143	17	31	191	57	0.0	6.7
Tunisia	253	693	25	20	738	380	0.0	191.7
Subsaharan Africa	8,945	6,936	1,296	273	8,505	3,685	0.2	-4.9
Cameroon	223	233	43	30	306	90	0.0	37.2
Congo	260	151	17	14	182	52	0.0	-30.0
Ghana	382	227	45	23	295	51	0.0	-22.8
Kenya	412	352	49	47	448	236	0.0	8.7
Liberia	1,343	320	18	14	352	59	0.0	-73.8
Nigeria	455	170	278	48	496	74	0.0	9.0
South Africa	5,523	4,917	779	45	5,741	2,815	0.1	3.9
Tanzania	88	147	17	13	177	47	0.0	101.1
Uganda	126	297	26	28	351	168	0.0	178.6
Zimbabwe	133	122	24	11	157	93	0.0	18.0
Other Africa	424	118	46	39	203	72	0.0	-52.1
Middle East	4,164	3,834	443	321	4,598	906	0.1	10.4
Egypt	676	784	91	33	908	203	0.0	34.3
Iraq	532	298	55	90	443	66	0.0	-16.7
Jordan	395	433	68	22	523	92	0.0	32.4
Kuwait	392	294	46	38	378	66	0.0	-3.6
Oman	223	191	17	12	220	45	0.0	-1.3
Palestine	120	68	14	12	94	11	0.0	-21.7
Qatar	84	58	16	12	86	11	0.0	2.4
Saudi Arabia	262	310	21	25	356	52	0.0	35.9
Syria	405	380	28	17	425	74	0.0	4.9
United Arab Emirates	193	484	37	18	539	163	0.0	179.3
Yemen	559	453	23	19	495	77	0.0	-11.4
Other Middle East	323	81	27	23	131	46	0.0	-59.4

I. INBOUND TOURISM

1. International tourist arrivals in October 2019

	Inbound tourism			Share (%) 2019*	Change (%)	
	2017	2018	2019		18/17	2019*/18
Air	269,187	345,129	317,526	65.9	28.2	-8.0
Phnom Penh Int'l Airport (PNH)	117,493	169,234	157,988	32.8	44.0	-6.6
Siem Reap Int'l Airport (REP)	144,315	145,818	106,264	22.1	1.0	-27.1
Kong Keng (KOS)	7,379	30,077	53,274	11.1	307.6	77.1
Land and Waterways	147,852	108,241	164,256	34.1	-26.8	51.8
Land	139,575	100,015	155,885	32.4	-28.3	55.9
Waterways	8,277	8,226	8,371	1.7	-0.6	1.8
Total	417,039	453,370	481,782	100.0	8.7	6.3

2. Top ten markets arrivals in October 2019



II. OUTBOUND TOURISM

Outbound tourism in October 2019

	Outbound tourism			Change (%)	
	2017	2018	2019	18/17	2019*/18
Cambodia Outbound Tourists	146,799	183,201	176,676	24.8	-3.6
International Tourists Departure	395,101	422,005	474,089	6.8	12.3

III. INTERNAL TOURISM

Foreign visitor arrivals to the regions in October 2019

	Arrivals			Share (%) 2019*	Change (%)	
	2017	2018	2019		18/17	2019*/18
Phnom Penh & Surrounding	229,479	264,896	340,288	57.9	15.4	28.5
Siem Reap Angkor	187,560	188,474	141,494	24.1	0.5	-24.9
Coastal Areas	52,815	61,773	101,197	17.2	17.0	63.8
Eco-tourism Areas	3,741	4,286	4,814	0.8	14.6	12.3
Total	473,595	519,429	587,793	100.0	9.7	13.2

International Tourist Arrivals to Cambodia by Country of Residence in October 2019

(by all means of transportation)

Regions Country of Residence	2018	2019			Total	Female	Share	Change
		Purposes of Visit					2019*	2019*/18
		Holiday	Business	Others			(%)	(%)
Grand Total	453,370	362,046	107,643	12,093	481,782	199,342	100.0	6.3
Asia and the Pacific	372,361	296,712	102,632	5,192	404,536	163,707	84.0	8.6
ASEAN (Southeast Asia)	125,081	164,650	12,611	1,318	178,579	83,062	37.1	42.8
Brunei Darussalam	40	74	3	7	84	32	0.0	110.0
Indonesia	3,917	2,990	2,347	59	5,396	1,607	1.1	37.8
Lao PDR	30,850	14,723	41	78	14,842	6,248	3.1	-51.9
Malaysia	14,456	12,516	2,191	178	14,885	5,018	3.1	3.0
Myanmar	1,549	975	519	67	1,561	728	0.3	0.8
Philippines	5,647	6,631	1,156	61	7,848	4,975	1.6	39.0
Singapore	5,728	6,219	524	61	6,804	2,360	1.4	18.8
Thailand	27,968	41,443	2,865	469	44,777	19,423	9.3	60.1
Vietnam	34,926	79,079	2,965	338	82,382	42,671	17.1	135.9
Northeast Asia	228,686	114,706	88,221	2,054	204,981	72,800	42.5	-10.4
China	188,125	80,475	80,111	960	161,546	56,056	33.5	-14.1
Hong Kong (China)	471	58	23	13	94	25	0.0	-80.0
Japan	13,086	10,994	2,854	314	14,162	4,933	2.9	8.2
Korea (ROK)	16,045	14,210	2,188	519	16,917	6,763	3.5	5.4
Macau (China)	19	7	4	3	14	5	0.0	-26.3
Mongolia	38	65	3	2	70	29	0.0	84.2
Taiwan (China)	10,902	8,897	3,038	243	12,178	4,989	2.5	11.7
Southern Asia	6,727	8,621	1,059	112	9,792	2,701	2.0	45.6
Afghanistan	15	12	6	2	20	3	0.0	33.3
Bangladesh	316	531	183	26	740	72	0.2	134.2
Bhutan	19	14	5	4	23	11	0.0	21.1
India	5,162	6,890	607	49	7,546	2,329	1.6	46.2
Iran	42	110	16	3	129	47	0.0	207.1
Nepal	321	273	59	11	343	101	0.1	6.9
Pakistan	354	434	72	8	514	58	0.1	45.2
Sri Lanka	498	357	111	9	477	80	0.1	-4.2
Oceania	11,772	8,572	689	1,616	10,877	5,028	2.3	-7.6
Australia	9,991	7,295	595	1,281	9,171	4,238	1.9	-8.2
Fiji	29	25	13	5	43	19	0.0	48.3
New Zealand	1,752	1,252	81	330	1,663	771	0.3	-5.1
Other Asia & the Pacific	95	163	52	92	307	116	0.1	223.2
Europe	52,656	46,472	3,319	2,623	52,414	24,162	10.9	-0.5
Northern Europe	14,492	13,373	992	220	14,585	6,434	3.0	0.6
Denmark	767	696	44	14	754	351	0.2	-1.7
Finland	445	270	49	11	330	147	0.1	-25.8
Iceland	29	65	7	5	77	29	0.0	165.5
Ireland	765	793	49	11	853	410	0.2	11.5
Norway	452	501	20	13	534	240	0.1	18.1
Sweden	914	714	69	49	832	365	0.2	-9.0
United Kingdom	11,120	10,334	754	117	11,205	4,892	2.3	0.8
Western Europe	22,816	18,183	1,590	2,197	21,970	9,846	4.6	-3.7
Austria	651	455	33	19	507	241	0.1	-22.1
Belgium	1,111	987	85	52	1,124	481	0.2	1.2
France	11,339	7,612	960	1,852	10,424	4,706	2.2	-8.1
Germany	6,489	6,322	269	120	6,711	3,076	1.4	3.4
Luxembourg	49	47	7	3	57	18	0.0	16.3
Monaco	8	2	2	1	5	1	0.0	-37.5
Netherlands	1,789	1,597	135	52	1,784	747	0.4	-0.3
Switzerland	1,380	1,161	99	98	1,358	576	0.3	-1.6
Central / Eastern Europe	7,158	6,332	379	101	6,812	3,564	1.4	-4.8
Bulgaria	109	176	14	11	201	87	0.0	84.4
Czech Republic	280	408	11	7	426	189	0.1	52.1
Estonia	95	80	3	2	85	32	0.0	-10.5
Hungary	393	345	27	36	408	215	0.1	3.8
Kazakhstan	141	66	25	2	93	47	0.0	-34.0
Kyrgyzstan	12	44	9	4	57	17	0.0	375.0
Latvia	85	176	7	1	184	101	0.0	116.5
Lithuania	147	118	6	1	125	69	0.0	-15.0
Poland	1,237	1,084	47	4	1,135	563	0.2	-8.2
Romania	352	289	10	2	301	163	0.1	-14.5
Russian Federation	3,420	2,975	140	21	3,136	1,718	0.7	-8.3
Slovakia	239	205	8	2	215	106	0.0	-10.0
Ukraine	625	353	61	7	421	249	0.1	-32.6
Uzbekistan	23	13	11	1	25	8	0.0	8.7

International Tourist Arrivals to Cambodia by Country of Residence in October 2019

(by all means of transportation)

Regions Country of Residence	2018	2019			Total	Female	Share	Change
		Purposes of Visit					2019*	2019*/18
		Holiday	Business	Others			(%)	(%)
Grand Total	453,370	362,046	107,643	12,093	481,782	199,342	100.0	6.3
Southern Europe	6,800	6,344	268	65	6,677	3,292	1.4	-1.8
Croatia	163	56	7	5	68	31	0.0	-58.3
Greece	75	108	4	3	115	49	0.0	53.3
Italy	1,467	1,636	137	28	1,801	789	0.4	22.8
Malta	35	49	1	2	52	26	0.0	48.6
Portugal	569	640	25	3	668	359	0.1	17.4
Serbia	62	38	6	2	46	13	0.0	-25.8
Slovenia	87	103	8	2	113	52	0.0	29.9
Spain	4,342	3,714	80	20	3,814	1,973	0.8	-12.2
East Mediterranean Europe	1,327	2,213	75	22	2,310	1,002	0.5	74.1
Israel	999	1,911	36	6	1,953	879	0.4	95.5
Turkey	328	302	39	16	357	123	0.1	8.8
Other Europe	63	27	15	18	60	24	0.0	-4.8
Americas	27,266	17,737	1,481	4,228	23,446	11,020	4.9	-14.0
North America	24,049	15,840	1,408	4,191	21,439	9,980	4.4	-10.9
Canada	4,313	3,071	310	599	3,980	1,868	0.8	-7.7
Mexico	813	941	21	15	977	540	0.2	20.2
United States of America	18,923	11,828	1,077	3,577	16,482	7,572	3.4	-12.9
Central America	104	109	9	4	122	64	0.0	17.3
Costa Rica	79	92	4	2	98	55	0.0	24.1
Honduras	11	13	3	1	17	7	0.0	54.5
Jamaica	14	4	2	1	7	2	0.0	-50.0
South America	3,082	1,771	54	24	1,849	963	0.4	-40.0
Argentina	453	285	5	6	296	145	0.1	-34.7
Brazil	739	555	26	4	585	304	0.1	-20.8
Chile	1,251	203	4	1	208	99	0.0	-83.4
Colombia	393	425	7	6	438	247	0.1	11.5
Ecuador	70	66	2	3	71	36	0.0	1.4
Peru	115	126	3	2	131	74	0.0	13.9
Uruguay	39	81	4	1	86	46	0.0	120.5
Venezuela	22	30	3	1	34	12	0.0	54.5
Other America	31	17	10	9	36	13	0.0	16.1
Africa	718	754	153	32	939	391	0.2	30.8
North Africa	66	88	12	4	104	37	0.0	57.6
Morocco	42	48	3	2	53	24	0.0	26.2
Sudan	18	10	4	1	15	2	0.0	-16.7
Tunisia	6	30	5	1	36	11	0.0	500.0
Subsaharan Africa	631	658	136	24	818	348	0.2	29.6
Cameroon	20	15	5	2	22	5	0.0	10.0
Congo	15	4	2	1	7	3	0.0	-53.3
Ghana	13	34	4	1	39	12	0.0	200.0
Kenya	38	39	5	6	50	27	0.0	31.6
Liberia	10	38	1	1	40	4	0.0	300.0
Nigeria	54	14	20	4	38	7	0.0	-29.6
South Africa	453	462	94	5	561	267	0.1	23.8
Tanzania	4	11	2	1	14	4	0.0	250.0
Uganda	17	27	2	2	31	10	0.0	82.4
Zimbabwe	7	14	1	1	16	9	0.0	128.6
Other Africa	21	8	5	4	17	6	0.0	-19.0
Middle East	369	371	58	18	447	62	0.1	21.1
Egypt	62	86	11	2	99	17	0.0	59.7
Iraq	22	85	21	1	107	14	0.0	386.4
Jordan	27	42	7	2	51	10	0.0	88.9
Kuwait	28	23	3	1	27	2	0.0	-3.6
Oman	23	17	1	1	19	1	0.0	-17.4
Palestine	10	5	1	1	7	2	0.0	-30.0
Qatar	8	2	2	1	5	1	0.0	-37.5
Saudi Arabia	27	37	2	3	42	4	0.0	55.6
Syria	56	24	3	1	28	2	0.0	-50.0
United Arab Emirates	19	15	3	2	20	2	0.0	5.3
Yemen	77	32	1	1	34	5	0.0	-55.8
Other Middle East	10	3	3	2	8	2	0.0	-20.0