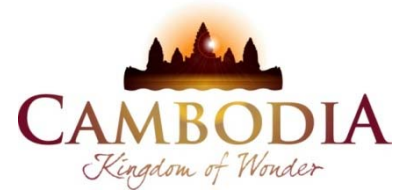




KINGDOM OF CAMBODIA  
NATION RELIGION KING



# TOURISM STATISTICS REPORT

# June 2014

**MINISTRY OF TOURISM**

Statistics and Tourism Information Department

No. A3, Street 169, Sangkat Veal Vong, Khan 7 Makara, Phnom Penh, Cambodia.

Fax: +855 23 885003

E-mail: [kong@mot.gov.kh](mailto:kong@mot.gov.kh)

Web site: [www.mot.gov.kh](http://www.mot.gov.kh)

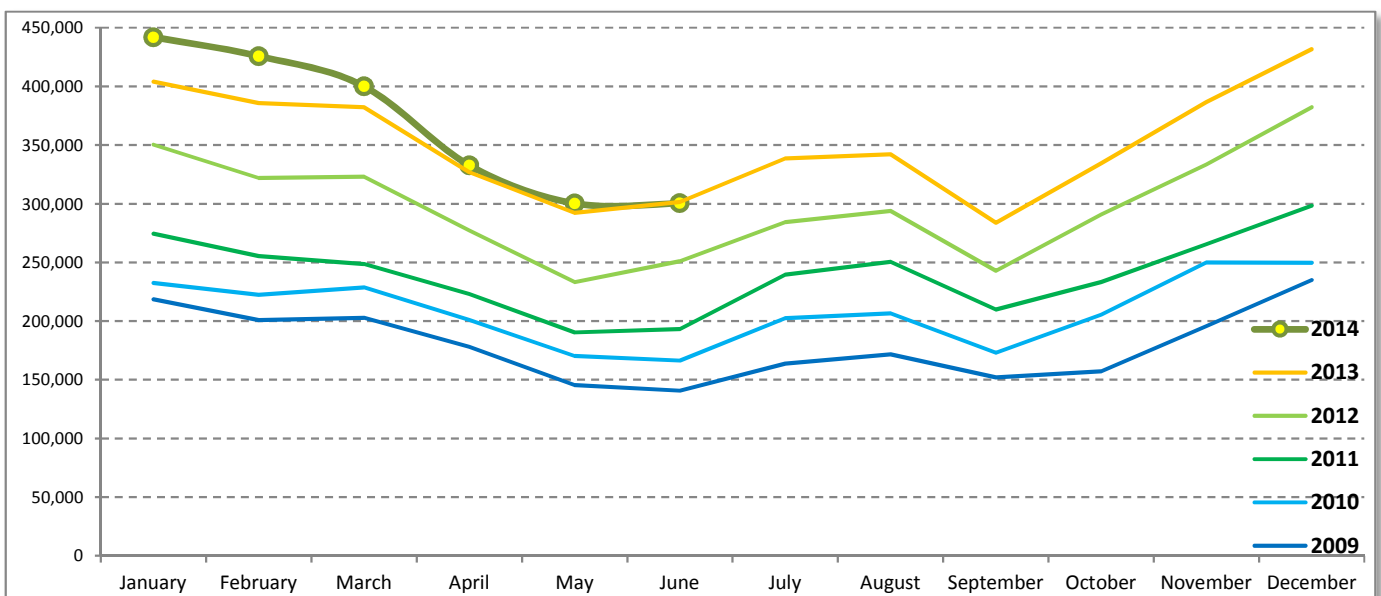
## Tourism Highlights

### International Tourist Arrivals, Average Length of Stay, Hotels Occupancy & Tourism Receipts 1993 - 2013

Years	Int'l Tourist Arrivals		Average Length of Stay (Days)	Hotels Occupancy (%)	Tourism Receipts (Million US\$)
	Number	Change (%)			
1993	118,183	-	N/A	N/A	N/A
1994	176,617	49.4	N/A	N/A	N/A
1995	219,680	24.4	8.00	37.00	100
1996	260,489	18.6	7.50	40.00	118
1997	218,843	-16.0	6.40	30.00	103
1998	286,524	30.9	5.20	40.00	166
1999	367,743	28.3	5.50	44.00	190
2000	466,365	26.8	5.50	45.00	228
2001	604,919	29.7	5.50	48.00	304
2002	786,524	30.0	5.80	50.00	379
2003	701,014	-10.9	5.50	50.00	347
2004	1,055,202	50.5	6.30	52.00	578
2005	1,421,615	34.7	6.30	52.00	832
2006	1,700,041	19.6	6.50	54.79	1,049
2007	2,015,128	18.5	6.50	54.79	1,400
2008	2,125,465	5.5	6.65	62.68	1,595
2009	2,161,577	1.7	6.45	63.57	1,561
2010	2,508,289	16.0	6.45	65.74	1,786
2011	2,881,862	14.9	6.50	66.15	1,912
2012	3,584,307	24.4	6.30	68.49	2,210
2013	4,210,165	17.5	6.75	69.53	2,547

### International tourist arrivals to Cambodia

Destination	Months	2009	2010	2011	2012	2013	2014	change (%) 2014*/13
<b>Cambodia</b>	<b>Q1</b>	<b>622,288</b>	<b>683,692</b>	<b>778,467</b>	<b>995,210</b>	<b>1,172,072</b>	<b>1,267,922</b>	<b>8.2</b>
<i>International tourist arrivals by all means of transportations</i>	January	218,691	232,590	274,471	350,257	404,106	442,045	9.4
	February	200,789	222,354	255,499	321,870	385,760	425,801	10.4
	March	202,808	228,748	248,497	323,083	382,206	400,076	4.7
	<b>Q2</b>	<b>464,230</b>	<b>537,464</b>	<b>606,562</b>	<b>761,442</b>	<b>920,527</b>	<b>933,446</b>	<b>1.4</b>
	April	177,955	200,965	223,032	277,304	327,000	332,690	1.7
	May	145,564	170,164	190,258	233,220	292,115	300,302	2.8
	June	140,711	166,335	193,272	250,918	301,412	300,454	-0.3
	<b>Q3</b>	<b>487,422</b>	<b>582,024</b>	<b>699,760</b>	<b>820,888</b>	<b>964,612</b>	<b>0</b>	
	July	163,817	202,349	239,527	284,282	338,761		
	August	171,668	206,563	250,429	293,859	342,064		
	September	151,937	173,112	209,804	242,747	283,787		
	<b>Q4</b>	<b>587,637</b>	<b>705,109</b>	<b>797,073</b>	<b>1,006,767</b>	<b>1,152,954</b>	<b>0</b>	
	October	157,105	205,515	233,190	290,959	334,410		
	November	195,570	249,892	265,539	333,482	386,737		
	December	234,962	249,702	298,344	382,326	431,807		
	<b>Total</b>	<b>2,161,577</b>	<b>2,508,289</b>	<b>2,881,862</b>	<b>3,584,307</b>	<b>4,210,165</b>	<b>2,201,368</b>	<b>5.2</b>



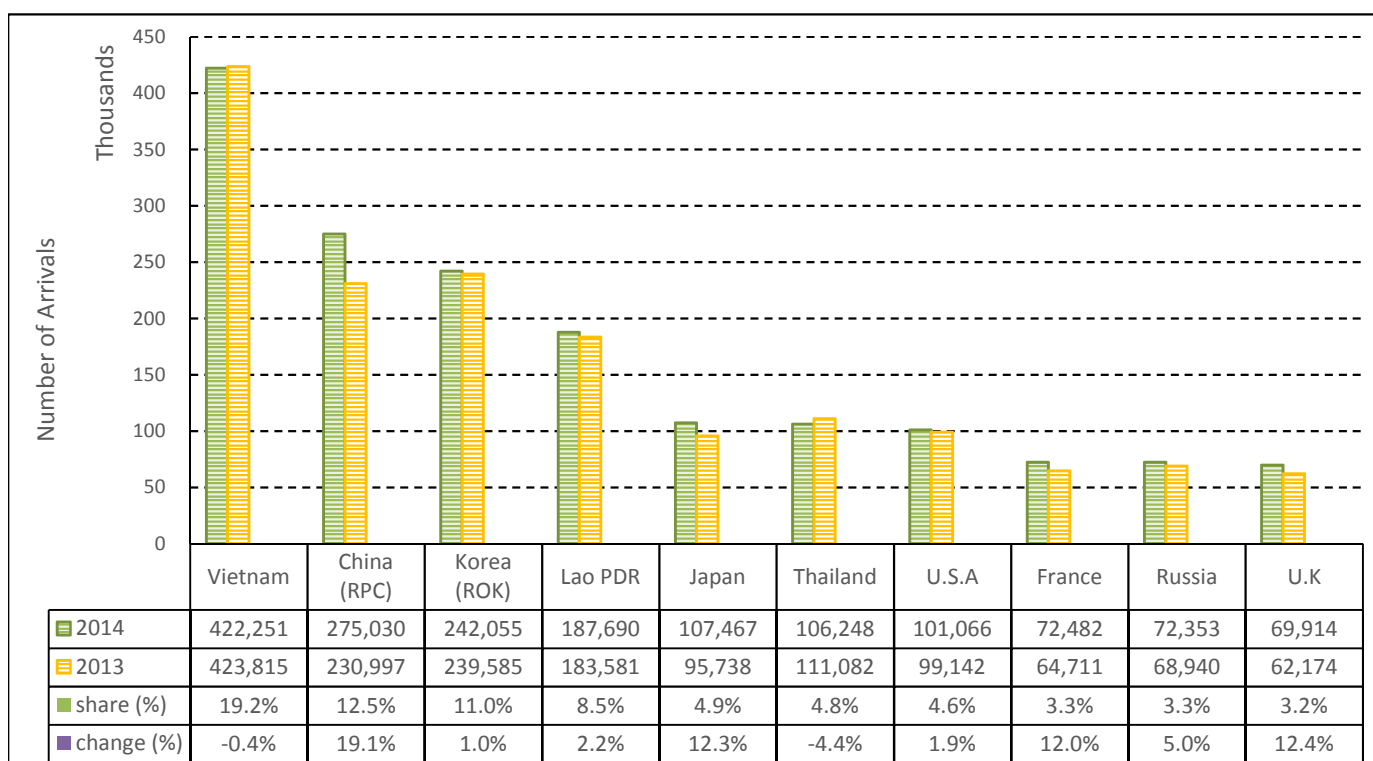
# TOURISM STATISTICS REPORT IN THE FIRST SEMESTER 2014

## I. INBOUND TOURISM

### 1. International tourist arrivals to Cambodia in January - June 2014

	Inbound tourism		share (%)		change (%)
	2013	2014	2013	2014	2014*/13
<b>Air</b>	<b>1,009,215</b>	<b>1,137,184</b>	<b>48.2</b>	<b>51.7</b>	<b>12.7</b>
Phnom Penh Int'l Airport (PNH)	406,670	445,253	19.4	20.2	9.5
Siem Reap Int'l Airport (REP)	602,545	691,931	28.8	31.4	14.8
<b>Land and Water ways</b>	<b>1,083,384</b>	<b>1,064,184</b>	<b>51.8</b>	<b>48.3</b>	<b>-1.8</b>
Land	1,045,880	1,018,946	50.0	46.3	-2.6
Waterway	37,504	45,238	1.8	2.1	20.6
<b>Total</b>	<b>2,092,599</b>	<b>2,201,368</b>	<b>100.0</b>	<b>100.0</b>	<b>5.2</b>

### 2. Top ten markets arrivals in January - June 2014



## II. OUTBOUND TOURISM

### Outbound tourism in January - June 2014

	Outbound tourism		change (%)
	2013	2014	2014*/13
Cambodian Outbound Tourists	441,292	454,786	3.1
International Tourists Departure	2,102,661	2,197,357	4.5

## III. INTERNAL TOURISM

### Foreign visitor arrivals to the regions in January - June 2014

	Arrivals		share (%)		change (%)
	2013	2014	2013	2014	2014*/13
Phnom Penh & Surrounding	970,354	913,434	40.0	36.7	-5.9
Siem Reap Angkor	1,122,245	1,239,544	46.3	49.7	10.5
Coastal Areas	299,127	301,156	12.3	12.1	0.7
Eco-tourism Areas	32,545	37,517	1.3	1.5	15.3
<b>Total</b>	<b>2,424,271</b>	<b>2,491,651</b>	<b>100.0</b>	<b>100.0</b>	<b>2.8</b>

## International Tourist Arrivals to Cambodia by Country of Residence in January - June 2014

(by all mean of transportations)

Regions Country of Residence	2013		2014			share		change	
			Purpose of Visit			Total	Female	2014*	2014*/13
			Holiday	Business	Other				
<b>GRAND TOTAL</b>	<b>2,092,599</b>	<b>2,088,768</b>	<b>98,734</b>	<b>13,866</b>	<b>2,201,368</b>	<b>1,024,894</b>	<b>100.0</b>	<b>5.2</b>	
<b>Asia and the Pacific</b>	<b>1,589,878</b>	<b>1,574,401</b>	<b>80,565</b>	<b>7,751</b>	<b>1,662,717</b>	<b>788,376</b>	<b>75.5</b>	<b>4.6</b>	
<b>ASEAN (South-East Asia)</b>	<b>879,782</b>	<b>864,841</b>	<b>24,288</b>	<b>3,652</b>	<b>892,781</b>	<b>442,455</b>	<b>40.6</b>	<b>1.5</b>	
Brunei Darussalam	312	457	10	24	491	210	0.0	57.4	
Indonesia	13,305	14,144	2,756	166	17,066	4,781	0.8	28.3	
Lao PDR	183,581	187,323	88	279	187,690	122,868	8.5	2.2	
Malaysia	60,657	64,764	4,347	111	69,222	23,824	3.1	14.1	
Myanmar	2,653	2,710	273	70	3,053	1,277	0.1	15.1	
Philippines	58,000	52,099	3,997	360	56,456	32,916	2.6	-2.7	
Singapore	26,377	28,803	1,405	96	30,304	10,446	1.4	14.9	
Thailand	111,082	98,971	5,930	1,347	106,248	43,144	4.8	-4.4	
Vietnam	423,815	415,570	5,482	1,199	422,251	202,989	19.2	-0.4	
<b>North-East Asia</b>	<b>619,343</b>	<b>624,264</b>	<b>50,391</b>	<b>2,665</b>	<b>677,320</b>	<b>307,976</b>	<b>30.8</b>	<b>9.4</b>	
China (RPC)	230,997	245,119	28,979	932	275,030	125,760	12.5	19.1	
Hong Kong SAR	3,584	3,552	102	7	3,661	1,739	0.2	2.1	
Japan	95,738	99,398	7,187	882	107,467	43,206	4.9	12.3	
Korea (ROK)	239,585	233,514	7,722	819	242,055	117,233	11.0	1.0	
Mongolia	210	169	7	11	187	89	0.0	-11.0	
Taiwan, China	49,229	42,512	6,394	14	48,920	19,949	2.2	-0.6	
<b>Southern Asia</b>	<b>13,875</b>	<b>13,671</b>	<b>1,946</b>	<b>439</b>	<b>16,056</b>	<b>4,652</b>	<b>0.7</b>	<b>15.7</b>	
Afghanistan	186	162	7	4	173	47	0.0	-7.0	
Bangladesh	914	535	136	74	745	125	0.0	-18.5	
Bhutan	48	42	0	15	57	23	0.0	18.8	
India	10,710	11,349	1,273	211	12,833	3,967	0.6	19.8	
Nepal	727	648	110	42	800	179	0.0	10.0	
Pakistan	523	368	179	47	594	107	0.0	13.6	
Srilanka	767	567	241	46	854	204	0.0	11.3	
<b>Western Asia</b>	<b>1,765</b>	<b>1,917</b>	<b>109</b>	<b>12</b>	<b>2,038</b>	<b>1,094</b>	<b>0.1</b>	<b>15.5</b>	
Kazakhstan	1,446	1,669	83	6	1,758	946	0.1	21.6	
Uzbekistan	319	248	26	6	280	148	0.0	-12.2	
<b>Oceania</b>	<b>72,846</b>	<b>68,287</b>	<b>3,736</b>	<b>903</b>	<b>72,926</b>	<b>31,446</b>	<b>3.3</b>	<b>0.1</b>	
Australia	63,541	59,323	3,110	789	63,222	27,427	2.9	-0.5	
Fiji	54	60	13	5	78	22	0.0	44.4	
New Zealand	9,251	8,904	613	109	9,626	3,997	0.4	4.1	
Other Asia & the Pacific	2,267	1,421	95	80	1,596	753	0.1	-29.6	
<b>Europe</b>	<b>350,997</b>	<b>365,073</b>	<b>11,732</b>	<b>3,303</b>	<b>380,108</b>	<b>166,747</b>	<b>17.3</b>	<b>8.3</b>	
<b>Northern Europe</b>	<b>92,251</b>	<b>97,913</b>	<b>3,538</b>	<b>840</b>	<b>102,291</b>	<b>41,334</b>	<b>4.6</b>	<b>10.9</b>	
Denmark	5,919	7,047	184	73	7,304	3,099	0.3	23.4	
Finland	3,918	3,888	111	48	4,047	1,514	0.2	3.3	
Iceland	429	381	7	1	389	165	0.0	-9.3	
Ireland	4,662	4,690	133	44	4,867	1,971	0.2	4.4	
Norway	5,244	5,456	115	28	5,599	2,422	0.3	6.8	
Sweden	9,905	9,829	258	84	10,171	4,012	0.5	2.7	
United Kingdom	62,174	66,622	2,730	562	69,914	28,151	3.2	12.4	
<b>Western Europe</b>	<b>143,972</b>	<b>145,862</b>	<b>6,100</b>	<b>1,929</b>	<b>153,891</b>	<b>64,258</b>	<b>7.0</b>	<b>6.9</b>	
Austria	4,900	4,812	92	23	4,927	2,028	0.2	0.6	
Belgium	7,231	7,061	318	121	7,500	2,924	0.3	3.7	
France	64,711	67,437	3,881	1,164	72,482	30,300	3.3	12.0	
Germany	42,902	43,737	1,022	358	45,117	18,998	2.0	5.2	
Luxembourg	268	246	8	4	258	89	0.0	-3.7	
Monaco	47	31	2	1	34	12	0.0	-27.7	
Netherlands	13,456	12,516	427	168	13,111	5,477	0.6	-2.6	
Switzerland	10,457	10,022	350	90	10,462	4,430	0.5	0.0	
<b>Central / Eastern Europe</b>	<b>87,555</b>	<b>91,424</b>	<b>1,092</b>	<b>199</b>	<b>92,715</b>	<b>48,139</b>	<b>4.2</b>	<b>5.9</b>	
Bulgaria	478	670	5	8	683	351	0.0	42.9	
Czech Republic	2,685	3,042	42	20	3,104	1,267	0.1	15.6	
Estonia	750	934	20	4	958	388	0.0	27.7	
Hungary	1,803	1,851	28	15	1,894	838	0.1	5.0	
Lithuania	962	956	8	2	966	486	0.0	0.4	
Poland	6,647	6,624	45	30	6,699	3,293	0.3	0.8	
Romania	712	969	50	9	1,028	526	0.0	44.4	
Russian Federation	68,940	71,482	789	82	72,353	38,488	3.3	5.0	
Slovakia	1,318	1,348	40	25	1,413	615	0.1	7.2	
Ukraine	3,260	3,548	65	4	3,617	1,887	0.2	11.0	

Source: Statistics and Tourism Information Department, MOT

## International Tourist Arrivals to Cambodia by Country of Residence in January - June 2014

(by all mean of transportations)

Regions Country of Residence	2013	2014			Total	Female	share	change
		Purpose of Visit					(%)	(%)
		Holiday	Business	Other			2014*	2014*/13
<b>GRAND TOTAL</b>	<b>2,092,599</b>	<b>2,088,768</b>	<b>98,734</b>	<b>13,866</b>	<b>2,201,368</b>	<b>1,024,894</b>	<b>100.0</b>	<b>5.2</b>
<b>Southern Europe</b>	<b>25,271</b>	<b>28,640</b>	<b>930</b>	<b>271</b>	<b>29,841</b>	<b>12,387</b>	<b>1.4</b>	<b>18.1</b>
Croatia	410	413	10	3	426	203	0.0	3.9
Greece	589	609	27	5	641	232	0.0	8.8
Italy	11,371	13,553	415	109	14,077	5,596	0.6	23.8
Portugal	1,795	1,697	52	14	1,763	800	0.1	-1.8
Serbia	323	328	14	1	343	165	0.0	6.2
Slovenia	649	564	9	0	573	251	0.0	-11.7
Spain	7,906	9,211	248	91	9,550	4,355	0.4	20.8
Turkey	2,228	2,265	155	48	2,468	785	0.1	10.8
Other Europe	1,948	1,234	72	64	1,370	629	0.1	-29.7
<b>Americas</b>	<b>142,726</b>	<b>140,528</b>	<b>6,044</b>	<b>2,631</b>	<b>149,203</b>	<b>66,299</b>	<b>6.8</b>	<b>4.5</b>
Argentina	3,892	4,020	23	17	4,060	2,020	0.2	4.3
Brazil	3,716	5,316	58	21	5,395	2,699	0.2	45.2
Canada	28,436	28,458	1,065	241	29,764	13,193	1.4	4.7
Chile	2,360	3,225	40	11	3,276	1,693	0.1	38.8
Colombia	840	971	15	13	999	495	0.0	18.9
Costa Rica	168	175	5	4	184	87	0.0	9.5
Ecuador	121	150	12	4	166	81	0.0	37.2
Mexico	2,058	2,403	25	17	2,445	1,209	0.1	18.8
Peru	331	361	16	10	387	188	0.0	16.9
United States	99,142	94,084	4,735	2,247	101,066	43,927	4.6	1.9
Uruguay	507	587	1	1	589	298	0.0	16.2
Other Americas	1,155	778	49	45	872	409	0.0	-24.5
<b>Africa</b>	<b>2,980</b>	<b>2,417</b>	<b>247</b>	<b>94</b>	<b>2,758</b>	<b>1,106</b>	<b>0.1</b>	<b>-7.4</b>
Cameroon	73	57	6	8	71	16	0.0	-2.7
Congo	29	16	4	4	24	7	0.0	-17.2
Ghana	105	53	5	5	63	22	0.0	-40.0
Kenya	150	98	5	13	116	64	0.0	-22.7
Liberia	25	12	0	1	13	2	0.0	-48.0
Nigeria	317	164	105	19	288	30	0.0	-9.1
Sudan	27	31	1	7	39	6	0.0	44.4
South Africa	1,934	1,790	104	17	1,911	854	0.1	-1.2
Uganda	38	25	2	2	29	6	0.0	-23.7
Other Africa	282	171	15	18	204	99	0.0	-27.7
<b>Middle East</b>	<b>6,018</b>	<b>6,349</b>	<b>146</b>	<b>87</b>	<b>6,582</b>	<b>2,366</b>	<b>0.3</b>	<b>9.4</b>
Egypt	158	137	9	6	152	33	0.0	-3.8
Iran	348	262	16	9	287	66	0.0	-17.5
Iraq	82	40	1	1	42	7	0.0	-48.8
Israel	4,159	4,957	99	40	5,096	2,120	0.2	22.5
Kuwait	618	487	1	12	500	17	0.0	-19.1
Oman	123	81	0	1	82	6	0.0	-33.3
Palestine	59	38	1	0	39	11	0.0	-33.9
Qatar	77	16	0	1	17	5	0.0	-77.9
Saudi Arabia	94	80	8	1	89	6	0.0	-5.3
United Arab Emirates	64	37	0	0	37	3	0.0	-42.2
Yemen	72	95	3	3	101	27	0.0	40.3
Other Middle East	164	119	8	13	140	65	0.0	-14.6

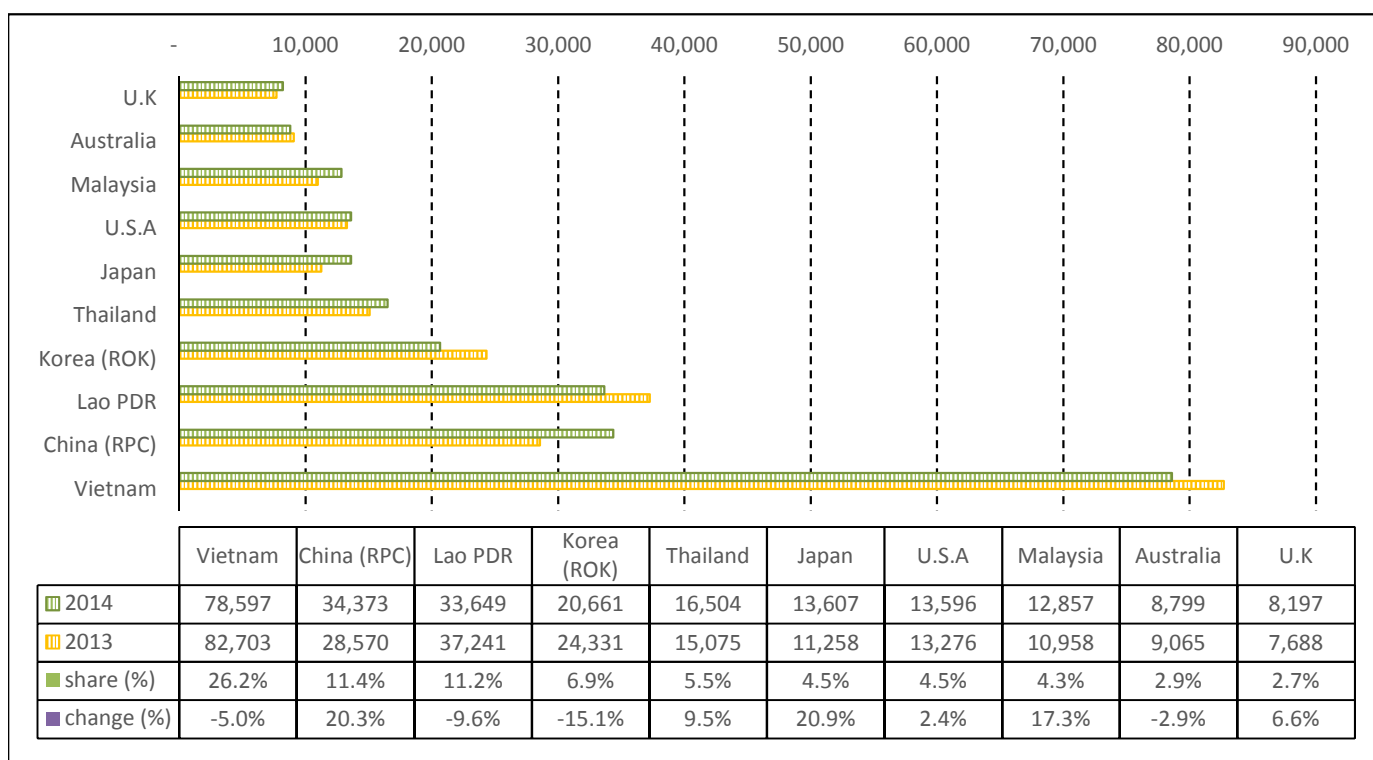
## TOURISM STATISTICS REPORT IN JUNE 2014

### I. INBOUND TOURISM

#### 1. International tourist arrivals to Cambodia in June 2014

	Inbound tourism		share (%)		change (%)
	2013	2014	2013	2014	2014*/13
<b>Air</b>	<b>126,452</b>	<b>139,463</b>	<b>42.0</b>	<b>46.4</b>	<b>10.3</b>
Phnom Penh Int'l Airport (PNH)	64,019	68,530	21.2	22.8	7.0
Siem Reap Int'l Airport (REP)	62,433	70,933	20.7	23.6	13.6
<b>Land and Water ways</b>	<b>174,960</b>	<b>160,991</b>	<b>58.0</b>	<b>53.6</b>	<b>-8.0</b>
Land	172,939	156,480	57.4	52.1	-9.5
Waterway	2,021	4,511	0.7	1.5	123.2
<b>Total</b>	<b>301,412</b>	<b>300,454</b>	<b>100.0</b>	<b>100.0</b>	<b>-0.3</b>

#### 2. Top ten markets arrivals in June 2014



### II. OUTBOUND TOURISM

#### Outbound tourism in June 2014

	Outbound tourism		change (%)
	2013	2014	2014*/13
Cambodian Outbound Tourists	74,035	70,654	-4.6
International Tourists Departure	295,284	287,128	-2.8

### III. INTERNAL TOURISM

#### Foreign visitor arrivals to the regions in June 2014

	Arrivals		share (%)		change (%)
	2013	2014	2013	2014	2014*/13
Phnom Penh & Surrounding	175,383	174,422	51.4	51.0	-0.5
Siem Reap Angkor	126,029	126,032	36.9	36.9	0.0
Coastal Areas	35,789	36,748	10.5	10.8	2.7
Eco-tourism Areas	4,343	4,636	1.3	1.4	6.7
<b>Total</b>	<b>341,544</b>	<b>341,838</b>	<b>100.0</b>	<b>100.0</b>	<b>0.1</b>

## International Tourist Arrivals to Cambodia by Country of Residence in June 2014

(by all mean of transportations)

Regions Country of Residence	2013	2014			Total	Female	share	change
		Purpose of Visit					(%)	(%)
		Holiday	Business	Other	2014*	2014*/13		
<b>GRAND TOTAL</b>	<b>301,412</b>	<b>283,582</b>	<b>14,695</b>	<b>2,177</b>	<b>300,454</b>	<b>131,661</b>	<b>100.0</b>	<b>-0.3</b>
<b>Asia and the Pacific</b>	<b>251,324</b>	<b>237,547</b>	<b>12,052</b>	<b>1,355</b>	<b>250,954</b>	<b>110,825</b>	<b>83.5</b>	<b>-0.1</b>
<b>ASEAN (South-East Asia)</b>	<b>165,266</b>	<b>155,739</b>	<b>3,852</b>	<b>844</b>	<b>160,435</b>	<b>77,453</b>	<b>53.4</b>	<b>-2.9</b>
Brunei Darussalam	47	121	2	4	127	48	0.0	170.2
Indonesia	2,411	2,377	463	16	2,856	707	1.0	18.5
Lao PDR	37,241	33,592	8	49	33,649	21,973	11.2	-9.6
Malaysia	10,958	12,138	706	13	12,857	4,882	4.3	17.3
Myanmar	512	448	25	14	487	199	0.2	-4.9
Philippines	10,525	7,416	566	72	8,054	4,548	2.7	-23.5
Singapore	5,794	7,036	261	7	7,304	2,749	2.4	26.1
Thailand	15,075	15,106	943	455	16,504	5,426	5.5	9.5
Vietnam	82,703	77,505	878	214	78,597	36,921	26.2	-5.0
<b>North-East Asia</b>	<b>72,394</b>	<b>69,470</b>	<b>7,276</b>	<b>333</b>	<b>77,079</b>	<b>28,033</b>	<b>25.7</b>	<b>6.5</b>
China (RPC)	28,570	30,427	3,844	102	34,373	11,958	11.4	20.3
Hong Kong SAR	412	905	18	1	924	471	0.3	124.3
Japan	11,258	12,153	1,312	142	13,607	3,887	4.5	20.9
Korea (ROK)	24,331	19,419	1,157	85	20,661	8,825	6.9	-15.1
Mongolia	15	29	1	2	32	15	0.0	113.3
Taiwan, China	7,808	6,537	944	1	7,482	2,877	2.5	-4.2
<b>Southern Asia</b>	<b>2,577</b>	<b>2,247</b>	<b>291</b>	<b>85</b>	<b>2,623</b>	<b>764</b>	<b>0.9</b>	<b>1.8</b>
Afghanistan	41	46	2	2	50	14	0.0	22.0
Bangladesh	101	131	27	10	168	16	0.1	66.3
Bhutan	8	8	0	6	14	7	0.0	75.0
India	2,069	1,816	188	39	2,043	663	0.7	-1.3
Nepal	158	114	19	10	143	21	0.0	-9.5
Pakistan	89	53	19	4	76	9	0.0	-14.6
Sri Lanka	111	79	36	14	129	34	0.0	16.2
<b>Western Asia</b>	<b>130</b>	<b>111</b>	<b>20</b>	<b>1</b>	<b>132</b>	<b>68</b>	<b>0.0</b>	<b>1.5</b>
Kazakhstan	87	81	13	0	94	46	0.0	8.0
Uzbekistan	43	30	7	1	38	22	0.0	-11.6
<b>Oceania</b>	<b>10,588</b>	<b>9,586</b>	<b>600</b>	<b>88</b>	<b>10,274</b>	<b>4,293</b>	<b>3.4</b>	<b>-3.0</b>
Australia	9,065	8,215	510	74	8,799	3,720	2.9	-2.9
Fiji	14	7	0	0	7	2	0.0	-50.0
New Zealand	1,509	1,364	90	14	1,468	571	0.5	-2.7
Other Asia & the Pacific	369	394	13	4	411	214	0.1	11.4
<b>Europe</b>	<b>31,287</b>	<b>27,982</b>	<b>1,696</b>	<b>402</b>	<b>30,080</b>	<b>12,327</b>	<b>10.0</b>	<b>-3.9</b>
<b>Northern Europe</b>	<b>10,330</b>	<b>10,090</b>	<b>505</b>	<b>118</b>	<b>10,713</b>	<b>4,323</b>	<b>3.6</b>	<b>3.7</b>
Denmark	432	458	21	18	497	181	0.2	15.0
Finland	219	270	12	3	285	106	0.1	30.1
Iceland	145	36	1	0	37	16	0.0	-74.5
Ireland	752	747	17	7	771	308	0.3	2.5
Norway	511	418	13	5	436	170	0.1	-14.7
Sweden	583	461	23	6	490	158	0.2	-16.0
United Kingdom	7,688	7,700	418	79	8,197	3,384	2.7	6.6
<b>Western Europe</b>	<b>11,778</b>	<b>10,408</b>	<b>896</b>	<b>229</b>	<b>11,533</b>	<b>4,421</b>	<b>3.8</b>	<b>-2.1</b>
Austria	236	249	9	6	264	105	0.1	11.9
Belgium	710	586	40	14	640	235	0.2	-9.9
France	5,975	5,505	570	139	6,214	2,424	2.1	4.0
Germany	2,689	2,395	161	45	2,601	941	0.9	-3.3
Luxembourg	16	24	2	0	26	8	0.0	62.5
Monaco	6	1	0	0	1	0	0.0	-83.3
Netherlands	1,477	1,038	60	16	1,114	449	0.4	-24.6
Switzerland	669	610	54	9	673	259	0.2	0.6
<b>Central / Eastern Europe</b>	<b>6,147</b>	<b>4,230</b>	<b>162</b>	<b>17</b>	<b>4,409</b>	<b>2,190</b>	<b>1.5</b>	<b>-28.3</b>
Bulgaria	59	32	0	1	33	17	0.0	-44.1
Czech Republic	128	146	3	1	150	59	0.0	17.2
Estonia	38	49	1	0	50	15	0.0	31.6
Hungary	92	84	7	0	91	37	0.0	-1.1
Lithuania	40	46	1	0	47	17	0.0	17.5
Poland	323	343	9	1	353	157	0.1	9.3
Romania	49	84	10	0	94	41	0.0	91.8
Russian Federation	5,126	3,226	120	8	3,354	1,750	1.1	-34.6
Slovakia	115	69	1	6	76	33	0.0	-33.9
Ukraine	177	151	10	0	161	64	0.1	-9.0

Source: Statistics and Tourism Information Department, MOT

## International Tourist Arrivals to Cambodia by Country of Residence in June 2014

(by all mean of transportations)

Regions Country of Residence	2013	2014			Total	Female	share	change
		Purpose of Visit					(%)	(%)
		Holiday	Business	Other			2014*	2014*/13
<b>GRAND TOTAL</b>	<b>301,412</b>	<b>283,582</b>	<b>14,695</b>	<b>2,177</b>	<b>300,454</b>	<b>131,661</b>	<b>100.0</b>	<b>-0.3</b>
<b>Southern Europe</b>	<b>2,724</b>	<b>2,882</b>	<b>123</b>	<b>34</b>	<b>3,039</b>	<b>1,217</b>	<b>1.0</b>	<b>11.6</b>
Croatia	29	10	0	1	11	5	0.0	-62.1
Greece	49	39	1	2	42	13	0.0	-14.3
Italy	891	980	62	17	1,059	391	0.4	18.9
Portugal	210	195	8	1	204	88	0.1	-2.9
Serbia	22	19	1	0	20	6	0.0	-9.1
Slovenia	65	29	0	0	29	12	0.0	-55.4
Spain	1,242	1,448	34	6	1,488	661	0.5	19.8
Turkey	216	162	17	7	186	41	0.1	-13.9
Other Europe	308	372	10	4	386	176	0.1	25.3
<b>Americas</b>	<b>17,608</b>	<b>17,187</b>	<b>888</b>	<b>402</b>	<b>18,477</b>	<b>8,210</b>	<b>6.1</b>	<b>4.9</b>
Argentina	232	219	6	1	226	112	0.1	-2.6
Brazil	307	384	18	0	402	187	0.1	30.9
Canada	2,693	2,793	140	27	2,960	1,335	1.0	9.9
Chile	258	255	7	2	264	144	0.1	2.3
Colombia	170	217	1	0	218	113	0.1	28.2
Costa Rica	17	47	1	0	48	17	0.0	182.4
Ecuador	24	19	1	1	21	7	0.0	-12.5
Mexico	308	454	2	4	460	224	0.2	49.4
Peru	59	49	3	1	53	30	0.0	-10.2
United States	13,276	12,530	703	363	13,596	5,924	4.5	2.4
Uruguay	25	25	0	0	25	15	0.0	0.0
Other Americas	239	195	6	3	204	102	0.1	-14.6
<b>Africa</b>	<b>497</b>	<b>394</b>	<b>34</b>	<b>5</b>	<b>433</b>	<b>174</b>	<b>0.1</b>	<b>-12.9</b>
Cameroon	13	11	1	1	13	3	0.0	0.0
Congo	11	1	0	0	1	0	0.0	-90.9
Ghana	5	3	0	0	3	1	0.0	-40.0
Kenya	30	26	0	3	29	19	0.0	-3.3
Liberia	2	1	0	0	1	0	0.0	-50.0
Nigeria	63	40	14	0	54	6	0.0	-14.3
Sudan	9	5	0	0	5	0	0.0	-44.4
South Africa	292	256	18	0	274	122	0.1	-6.2
Uganda	12	6	0	0	6	0	0.0	-50.0
Other Africa	60	45	1	1	47	23	0.0	-21.7
<b>Middle East</b>	<b>696</b>	<b>472</b>	<b>25</b>	<b>13</b>	<b>510</b>	<b>125</b>	<b>0.2</b>	<b>-26.7</b>
Egypt	31	17	2	3	22	3	0.0	-29.0
Iran	38	28	5	5	38	9	0.0	0.0
Iraq	15	6	1	0	7	2	0.0	-53.3
Israel	280	250	16	2	268	89	0.1	-4.3
Kuwait	161	80	0	1	81	0	0.0	-49.7
Oman	51	11	0	0	11	0	0.0	-78.4
Palestine	10	8	0	0	8	1	0.0	-20.0
Qatar	22	0	0	0	0	0	0.0	-100.0
Saudi Arabia	19	21	1	1	23	2	0.0	21.1
United Arab Emirates	16	7	0	0	7	0	0.0	-56.3
Yemen	18	9	0	0	9	1	0.0	-50.0
Other Middle East	35	35	0	1	36	18	0.0	2.9



**COMPILED BY:**

1. Mr. Kong Sopheareak

Director  
Statistics & Tourism Information Department  
Fax: +855 23 885003  
E-mail: kong@mot.gov.kh

2. Mr. Horth Vanny

Chief of Tourism Statistics Office  
Compile and data analysis  
Tel.: +855 12 827664