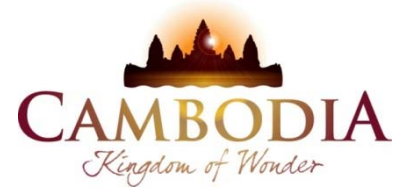




KINGDOM OF CAMBODIA
NATION RELIGION KING



TOURISM STATISTICS REPORT

February 2014

MINISTRY OF TOURISM

Statistics and Tourism Information Department

No. A3, Street 169, Sangkat Veal Vong, Khan 7 Makara, Phnom Penh, Cambodia.

Fax: +855 23 885003

E-mail: kong@mot.gov.kh

Web site: www.mot.gov.kh

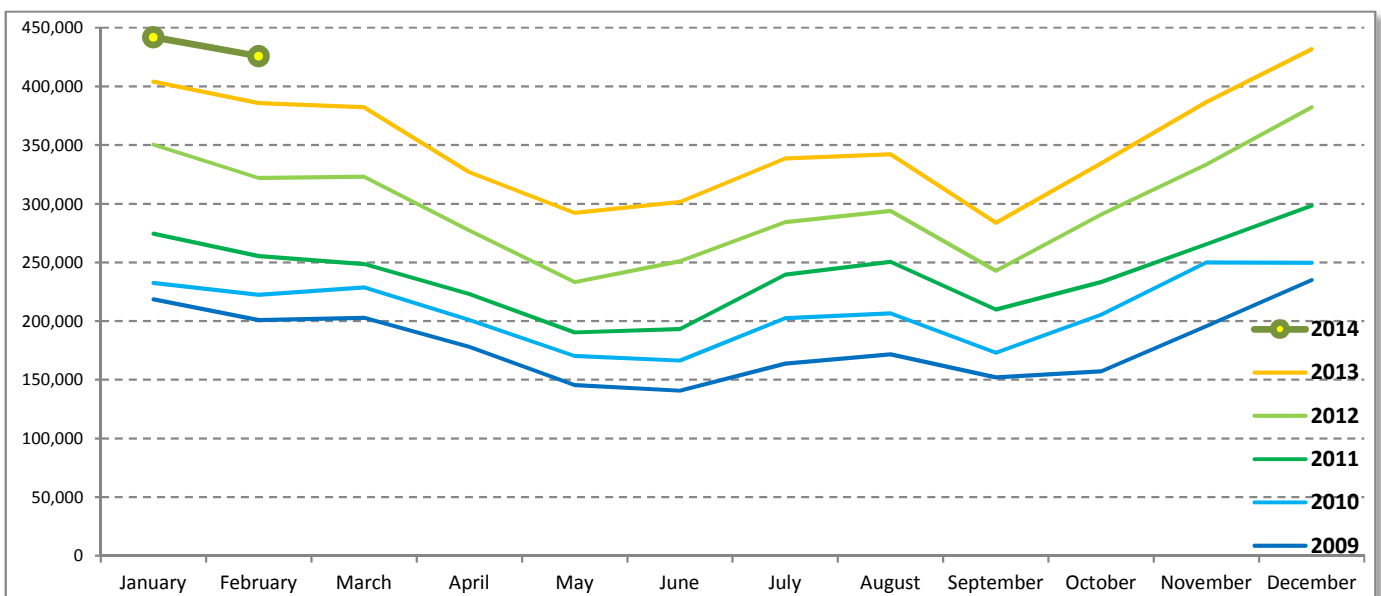
Tourism Highlights

International Tourist Arrivals, Average Length of Stay, Hotels Occupancy & Tourism Receipts 1993 - 2013

Years	Int'l Tourist Arrivals		Average Length of Stay (Days)	Hotels Occupancy (%)	Tourism Receipts (Million US\$)
	Number	Change (%)			
1993	118,183	-	N/A	N/A	N/A
1994	176,617	49.4	N/A	N/A	N/A
1995	219,680	24.4	8.00	37.00	100
1996	260,489	18.6	7.50	40.00	118
1997	218,843	-16.0	6.40	30.00	103
1998	286,524	30.9	5.20	40.00	166
1999	367,743	28.3	5.50	44.00	190
2000	466,365	26.8	5.50	45.00	228
2001	604,919	29.7	5.50	48.00	304
2002	786,524	30.0	5.80	50.00	379
2003	701,014	-10.9	5.50	50.00	347
2004	1,055,202	50.5	6.30	52.00	578
2005	1,421,615	34.7	6.30	52.00	832
2006	1,700,041	19.6	6.50	54.79	1,049
2007	2,015,128	18.5	6.50	54.79	1,400
2008	2,125,465	5.5	6.65	62.68	1,595
2009	2,161,577	1.7	6.45	63.57	1,561
2010	2,508,289	16.0	6.45	65.74	1,786
2011	2,881,862	14.9	6.50	66.15	1,912
2012	3,584,307	24.4	6.30	68.49	2,210
2013	4,210,165	17.5	6.75	69.53	2,547

International tourist arrivals to Cambodia

Destination	Months	2009	2010	2011	2012	2013	2014	change (%) 2014*/13
Cambodia	Q1	622,288	683,692	778,467	995,210	1,172,072	867,846	
<i>International tourist arrivals by all means of transportations</i>	January	218,691	232,590	274,471	350,257	404,106	442,045	9.4
	February	200,789	222,354	255,499	321,870	385,760	425,801	10.4
	March	202,808	228,748	248,497	323,083	382,206		
	Q2	464,230	537,464	606,562	761,442	920,527	0	
	April	177,955	200,965	223,032	277,304	327,000		
	May	145,564	170,164	190,258	233,220	292,115		
	June	140,711	166,335	193,272	250,918	301,412		
	Q3	487,422	582,024	699,760	820,888	964,612	0	
	July	163,817	202,349	239,527	284,282	338,761		
	August	171,668	206,563	250,429	293,859	342,064		
	September	151,937	173,112	209,804	242,747	283,787		
	Q4	587,637	705,109	797,073	1,006,767	1,152,954	0	
	October	157,105	205,515	233,190	290,959	334,410		
	November	195,570	249,892	265,539	333,482	386,737		
	December	234,962	249,702	298,344	382,326	431,807		
	Total	2,161,577	2,508,289	2,881,862	3,584,307	4,210,165	867,846	9.9



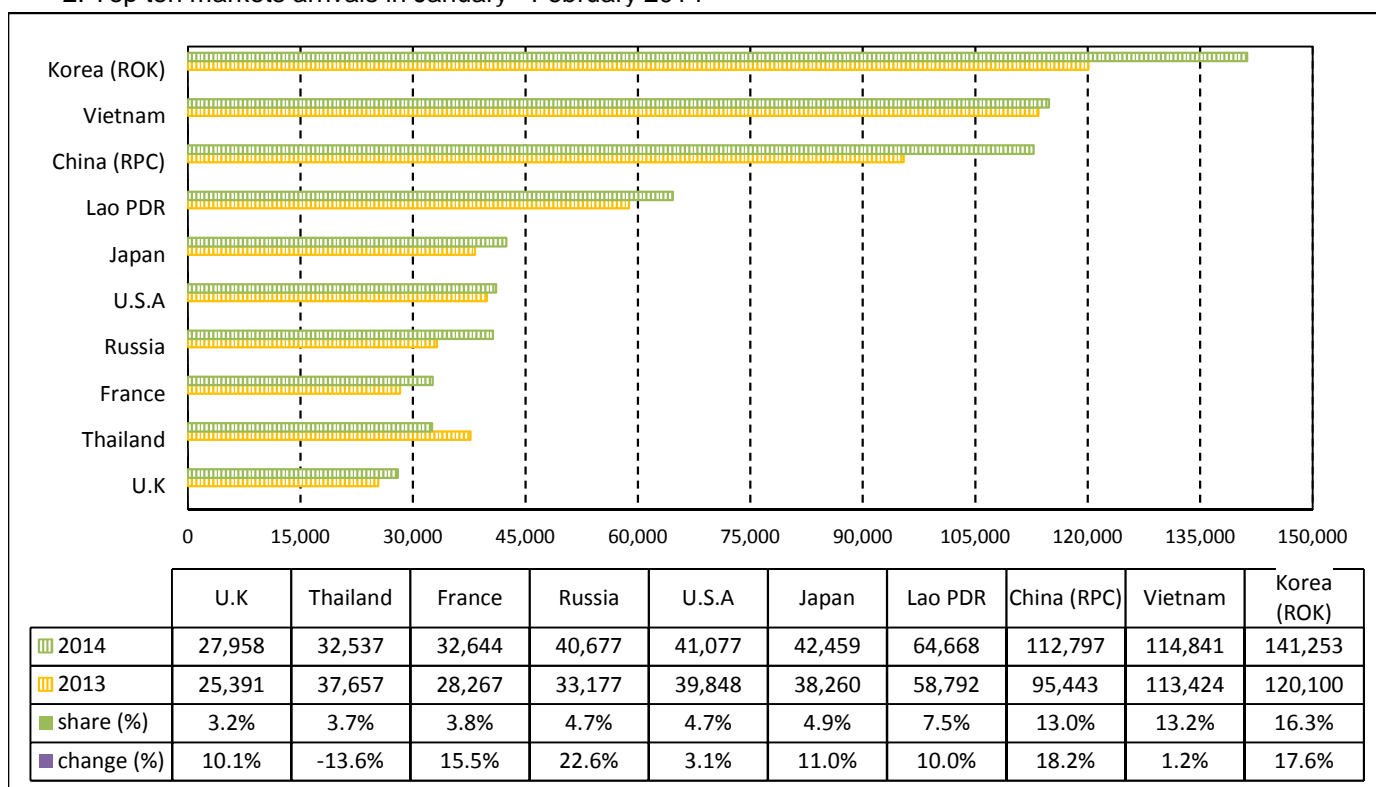
TOURISM STATISTICS REPORT IN THE FIRST TWO MONTHS 2014

I. INBOUND TOURISM

1. International tourist arrivals to Cambodia in January - February 2014

	Inbound tourism		share (%)		change (%)
	2013	2014	2013	2014	2014*/13
Air	418,663	494,536	53.0	57.0	18.1
Phnom Penh Int'l Airport (PNH)	141,537	167,603	17.9	19.3	18.4
Siem Reap Int'l Airport (REP)	277,126	326,933	35.1	37.7	18.0
Land and Water ways	371,203	373,310	47.0	43.0	0.6
Land	353,309	353,223	44.7	40.7	0.0
Waterway	17,894	20,087	2.3	2.3	12.3
Total	789,866	867,846	100.0	100.0	9.9

2. Top ten markets arrivals in January - February 2014



II. OUTBOUND TOURISM

Outbound tourism in January - February 2014

	Outbound tourism		change (%)
	2013	2014	2014*/13
Cambodian Outbound Tourists	136,979	136,542	-0.3
International Tourists Departure	799,611	863,982	8.1

III. INTERNAL TOURISM

Foreign visitor arrivals to the regions in January - February 2014

	Arrivals		share (%)		change (%)
	2013	2014	2013	2014	2014*/13
Phnom Penh & Surrounding	309,883	319,289	33.7	30.6	3.0
Siem Reap Angkor	479,983	548,557	52.2	52.5	14.3
Coastal Areas	117,147	160,514	12.7	15.4	37.0
Eco-tourism Areas	13,371	15,955	1.5	1.5	19.3
Total	920,384	1,044,315	100.0	100.0	13.5

International Tourist Arrivals to Cambodia by Country of Residence in January - February 2014

(by all mean of transportations)

Regions Country of Residence	2013	2014			Total	Female	share	change
		Purpose of Visit					(%)	(%)
		Holiday	Business	Other			2014*	2014*/13
GRAND TOTAL	789,866	830,146	32,818	4,882	867,846	416,584	100.0	9.9
Asia and the Pacific	564,401	588,703	26,497	2,685	617,885	305,189	71.2	9.5
ASEAN (South-East Asia)	256,270	255,665	7,749	995	264,409	134,628	30.5	3.2
Brunei Darussalam	91	116	5	11	132	62	0.0	45.1
Indonesia	4,010	4,395	905	36	5,336	1,527	0.6	33.1
Lao PDR	58,792	64,592	19	57	64,668	41,916	7.5	10.0
Malaysia	17,639	18,292	1,448	52	19,792	6,782	2.3	12.2
Myanmar	689	614	87	13	714	267	0.1	3.6
Philippines	16,624	17,303	1,162	116	18,581	11,004	2.1	11.8
Singapore	7,344	7,321	444	43	7,808	2,637	0.9	6.3
Thailand	37,657	30,374	1,852	311	32,537	13,424	3.7	-13.6
Vietnam	113,424	112,658	1,827	356	114,841	57,009	13.2	1.2
North-East Asia	272,592	297,836	16,848	1,159	315,843	154,207	36.4	15.9
China (RPC)	95,443	102,120	10,209	468	112,797	56,307	13.0	18.2
Hong Kong SAR	1,146	1,219	34	2	1,255	605	0.1	9.5
Japan	38,260	40,019	2,127	313	42,459	18,828	4.9	11.0
Korea (ROK)	120,100	138,442	2,446	365	141,253	70,682	16.3	17.6
Mongolia	87	78	1	2	81	44	0.0	-6.9
Taiwan, China	17,556	15,958	2,031	9	17,998	7,741	2.1	2.5
Southern Asia	4,451	4,647	625	156	5,428	1,682	0.6	22.0
Afghanistan	37	48	1	0	49	14	0.0	32.4
Bangladesh	263	173	42	31	246	66	0.0	-6.5
Bhutan	21	17	0	2	19	10	0.0	-9.5
India	3,549	3,905	432	84	4,421	1,433	0.5	24.6
Nepal	221	182	35	6	223	53	0.0	0.9
Pakistan	152	134	44	20	198	34	0.0	30.3
Srilanka	208	188	71	13	272	72	0.0	30.8
Western Asia	942	1,194	29	4	1,227	651	0.1	30.3
Kazakhstan	843	1,072	22	2	1,096	591	0.1	30.0
Uzbekistan	99	122	7	2	131	60	0.0	32.3
Oceania	29,190	28,987	1,217	353	30,557	13,791	3.5	4.7
Australia	25,862	25,468	995	313	26,776	12,129	3.1	3.5
Fiji	17	19	3	3	25	12	0.0	47.1
New Zealand	3,311	3,500	219	37	3,756	1,650	0.4	13.4
Other Asia & the Pacific	956	374	29	18	421	230	0.0	-56.0
Europe	162,440	177,943	4,039	1,242	183,224	81,430	21.1	12.8
Northern Europe	40,840	43,432	1,206	291	44,929	18,055	5.2	10.0
Denmark	2,914	3,890	75	20	3,985	1,736	0.5	36.8
Finland	2,231	2,232	45	17	2,294	869	0.3	2.8
Iceland	138	127	0	0	127	57	0.0	-8.0
Ireland	1,867	1,877	54	19	1,950	795	0.2	4.4
Norway	2,527	2,680	40	5	2,725	1,191	0.3	7.8
Sweden	5,772	5,768	100	22	5,890	2,340	0.7	2.0
United Kingdom	25,391	26,858	892	208	27,958	11,067	3.2	10.1
Western Europe	66,360	69,480	2,096	759	72,335	30,605	8.3	9.0
Austria	2,878	2,676	49	8	2,733	1,096	0.3	-5.0
Belgium	3,118	3,186	105	48	3,339	1,319	0.4	7.1
France	28,267	30,862	1,317	465	32,644	13,968	3.8	15.5
Germany	20,608	20,978	351	132	21,461	9,038	2.5	4.1
Luxembourg	106	120	2	2	124	42	0.0	17.0
Monaco	12	21	0	0	21	7	0.0	75.0
Netherlands	5,964	6,176	143	67	6,386	2,706	0.7	7.1
Switzerland	5,407	5,461	129	37	5,627	2,429	0.6	4.1
Central / Eastern Europe	43,109	51,878	396	89	52,363	27,093	6.0	21.5
Bulgaria	202	305	4	2	311	167	0.0	54.0
Czech Republic	1,428	1,744	20	9	1,773	724	0.2	24.2
Estonia	429	609	10	3	622	259	0.1	45.0
Hungary	1,047	1,092	12	8	1,112	506	0.1	6.2
Lithuania	506	502	4	2	508	252	0.1	0.4
Poland	3,514	3,884	18	17	3,919	1,945	0.5	11.5
Romania	367	455	15	4	474	251	0.1	29.2
Russian Federation	33,177	40,371	276	30	40,677	21,477	4.7	22.6
Slovakia	567	655	13	13	681	285	0.1	20.1
Ukraine	1,872	2,261	24	1	2,286	1,227	0.3	22.1

International Tourist Arrivals to Cambodia by Country of Residence in January - February 2014

(by all mean of transportations)

Regions Country of Residence	2013		2014			share		change
		Purpose of Visit			Total	Female	2014*	2014*/13
		Holiday	Business	Other				
GRAND TOTAL	789,866	830,146	32,818	4,882	867,846	416,584	100.0	9.9
Southern Europe	11,272	12,872	317	93	13,282	5,512	1.5	17.8
Croatia	217	248	7	0	255	119	0.0	17.5
Greece	197	397	8	1	406	160	0.0	106.1
Italy	5,814	6,704	133	33	6,870	2,751	0.8	18.2
Portugal	630	658	17	2	677	306	0.1	7.5
Serbia	170	203	4	0	207	103	0.0	21.8
Slovenia	424	326	5	0	331	147	0.0	-21.9
Spain	2,768	3,283	88	46	3,417	1,544	0.4	23.4
Turkey	1,052	1,053	55	11	1,119	382	0.1	6.4
Other Europe	859	281	24	10	315	165	0.0	-63.3
Americas	59,117	59,396	2,161	897	62,454	28,280	7.2	5.6
Argentina	1,927	2,078	4	7	2,089	1,067	0.2	8.4
Brazil	1,761	2,417	10	3	2,430	1,205	0.3	38.0
Canada	12,936	13,079	416	95	13,590	6,013	1.6	5.1
Chile	1,126	1,636	7	5	1,648	854	0.2	46.4
Colombia	304	361	7	6	374	169	0.0	23.0
Costa Rica	78	64	3	2	69	33	0.0	-11.5
Ecuador	59	65	4	2	71	32	0.0	20.3
Mexico	547	672	12	2	686	338	0.1	25.4
Peru	67	136	8	3	147	72	0.0	119.4
United States	39,848	38,639	1,675	763	41,077	18,364	4.7	3.1
Uruguay	73	62	0	1	63	27	0.0	-13.7
Other Americas	391	187	15	8	210	106	0.0	-46.3
Africa	1,130	912	79	22	1,013	419	0.1	-10.4
Cameroon	31	18	2	5	25	8	0.0	-19.4
Congo	8	7	0	0	7	2	0.0	-12.5
Ghana	40	43	5	1	49	18	0.0	22.5
Kenya	43	35	3	1	39	18	0.0	-9.3
Liberia	6	9	0	0	9	2	0.0	50.0
Nigeria	109	43	38	3	84	11	0.0	-22.9
Sudan	11	12	0	3	15	4	0.0	36.4
South Africa	776	678	25	6	709	317	0.1	-8.6
Uganda	12	6	0	0	6	3	0.0	-50.0
Other Africa	94	61	6	3	70	36	0.0	-25.5
Middle East	2,778	3,192	42	36	3,270	1,266	0.4	17.7
Egypt	41	49	1	2	52	14	0.0	26.8
Iran	129	95	9	1	105	24	0.0	-18.6
Iraq	14	7	0	1	8	0	0.0	-42.9
Israel	2,196	2,712	24	19	2,755	1,172	0.3	25.5
Kuwait	232	178	1	10	189	10	0.0	-18.5
Oman	26	38	0	0	38	3	0.0	46.2
Palestine	10	10	1	0	11	4	0.0	10.0
Qatar	14	8	0	0	8	2	0.0	-42.9
Saudi Arabia	31	20	3	0	23	2	0.0	-25.8
United Arab Emirates	14	9	0	0	9	2	0.0	-35.7
Yemen	15	25	0	0	25	9	0.0	66.7
Other Middle East	56	41	3	3	47	24	0.0	-16.1

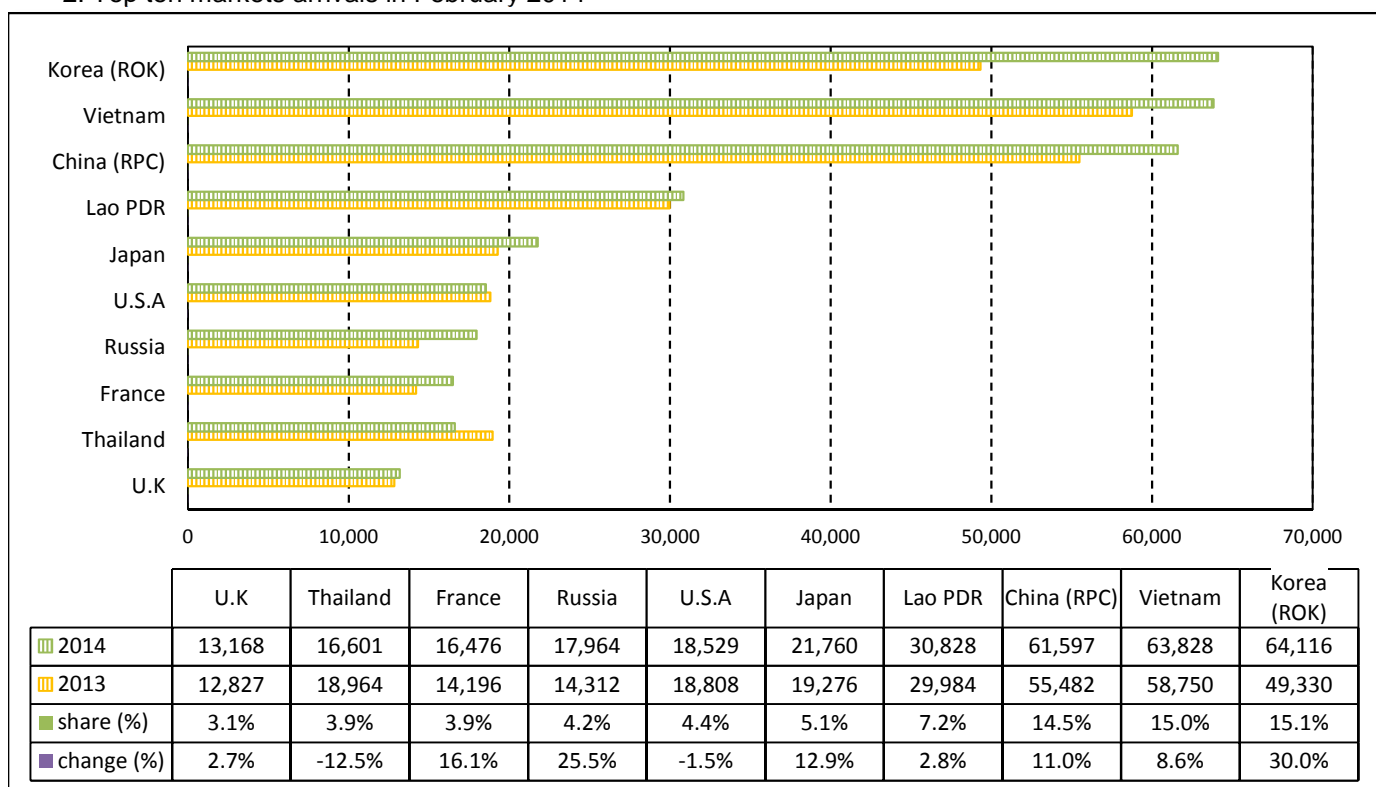
TOURISM STATISTICS REPORT IN FEBRUARY 2014

I. INBOUND TOURISM

1. International tourist arrivals to Cambodia in February 2014

	Inbound tourism		share (%)		change (%)
	2013	2014	2013	2014	2014*/13
Air	203,453	240,606	52.7	56.5	18.3
Phnom Penh Int'l Airport (PNH)	68,988	83,167	17.9	19.5	20.6
Siem Reap Int'l Airport (REP)	134,465	157,439	34.9	37.0	17.1
Land and Water ways	182,307	185,195	47.3	43.5	1.6
Land	174,036	175,369	45.1	41.2	0.8
Waterway	8,271	9,826	2.1	2.3	18.8
Total	385,760	425,801	100.0	100.0	10.4

2. Top ten markets arrivals in February 2014



II. OUTBOUND TOURISM

Outbound tourism in February 2014

	Outbound tourism		change (%)
	2013	2014	2014*/13
Cambodian Outbound Tourists	65,259	67,924	4.1
International Tourists Departure	386,508	416,706	7.8

III. INTERNAL TOURISM

Foreign visitor arrivals to the regions in February 2014

	Arrivals		share (%)		change (%)
	2013	2014	2013	2014	2014*/13
Phnom Penh & Surrounding	154,391	163,575	33.9	31.9	5.9
Siem Reap Angkor	231,369	262,226	50.7	51.2	13.3
Coastal Areas	63,505	79,251	13.9	15.5	24.8
Eco-tourism Areas	6,728	7,593	1.5	1.5	12.9
Total	455,993	512,645	100.0	100.0	12.4

International Tourist Arrivals to Cambodia by Country of Residence in February 2014

(by all mean of transportations)

Regions Country of Residence	2013	2014			Total	Female	share	change
		Purpose of Visit					(%)	(%)
	Holiday	Business	Other	2014*	2014*/13			
GRAND TOTAL	385,760	405,304	18,357	2,140	425,801	202,882	100.0	10.4
Asia and the Pacific	278,021	292,009	15,666	1,239	308,914	150,477	72.5	11.1
ASEAN (South-East Asia)	130,268	132,970	4,236	464	137,670	69,348	32.3	5.7
Brunei Darussalam	54	59	1	6	66	32	0.0	22.2
Indonesia	1,748	2,249	447	16	2,712	724	0.6	55.1
Lao PDR	29,984	30,797	9	22	30,828	20,046	7.2	2.8
Malaysia	8,358	9,814	892	27	10,733	3,649	2.5	28.4
Myanmar	360	301	22	3	326	136	0.1	-9.4
Philippines	8,562	8,304	476	42	8,822	5,180	2.1	3.0
Singapore	3,488	3,459	274	21	3,754	1,229	0.9	7.6
Thailand	18,964	15,577	931	93	16,601	7,144	3.9	-12.5
Vietnam	58,750	62,410	1,184	234	63,828	31,208	15.0	8.6
North-East Asia	133,634	145,951	10,626	540	157,117	75,205	36.9	17.6
China (RPC)	55,482	54,184	7,199	214	61,597	29,419	14.5	11.0
Hong Kong SAR	549	531	16	0	547	250	0.1	-0.4
Japan	19,276	20,594	1,042	124	21,760	9,238	5.1	12.9
Korea (ROK)	49,330	62,757	1,157	202	64,116	32,520	15.1	30.0
Mongolia	45	30	1	0	31	14	0.0	-31.1
Taiwan, China	8,952	7,855	1,211	0	9,066	3,764	2.1	1.3
Southern Asia	2,160	1,922	284	80	2,286	639	0.5	5.8
Afghanistan	17	35	1	0	36	12	0.0	111.8
Bangladesh	135	80	25	12	117	29	0.0	-13.3
Bhutan	11	2	0	1	3	1	0.0	-72.7
India	1,730	1,529	203	54	1,786	534	0.4	3.2
Nepal	89	100	15	1	116	25	0.0	30.3
Pakistan	59	80	12	5	97	13	0.0	64.4
Srilanka	119	96	28	7	131	25	0.0	10.1
Western Asia	456	453	12	1	466	238	0.1	2.2
Kazakhstan	406	401	9	0	410	208	0.1	1.0
Uzbekistan	50	52	3	1	56	30	0.0	12.0
Oceania	10,854	10,568	492	147	11,207	4,960	2.6	3.3
Australia	9,740	9,343	411	129	9,883	4,411	2.3	1.5
Fiji	8	13	1	0	14	5	0.0	75.0
New Zealand	1,106	1,212	80	18	1,310	544	0.3	18.4
Other Asia & the Pacific	649	145	16	7	168	87	0.0	-74.1
Europe	77,610	84,176	1,664	486	86,326	38,748	20.3	11.2
Northern Europe	20,108	20,620	498	117	21,235	8,808	5.0	5.6
Denmark	1,519	2,067	29	16	2,112	947	0.5	39.0
Finland	989	966	17	5	988	380	0.2	-0.1
Iceland	50	54	0	0	54	26	0.0	8.0
Ireland	894	793	17	8	818	320	0.2	-8.5
Norway	1,245	1,355	24	2	1,381	630	0.3	10.9
Sweden	2,584	2,668	39	7	2,714	1,133	0.6	5.0
United Kingdom	12,827	12,717	372	79	13,168	5,372	3.1	2.7
Western Europe	32,585	34,257	876	301	35,434	15,134	8.3	8.7
Austria	1,338	1,315	21	6	1,342	553	0.3	0.3
Belgium	1,573	1,588	41	23	1,652	644	0.4	5.0
France	14,196	15,763	546	167	16,476	7,109	3.9	16.1
Germany	10,262	10,334	162	64	10,560	4,424	2.5	2.9
Luxembourg	67	48	0	2	50	13	0.0	-25.4
Monaco	4	1	0	0	1	1	0.0	-75.0
Netherlands	2,740	2,867	49	20	2,936	1,267	0.7	7.2
Switzerland	2,405	2,341	57	19	2,417	1,123	0.6	0.5
Central / Eastern Europe	19,157	23,283	151	30	23,464	12,224	5.5	22.5
Bulgaria	78	133	3	0	136	77	0.0	74.4
Czech Republic	755	831	7	1	839	340	0.2	11.1
Estonia	204	343	8	3	354	141	0.1	73.5
Hungary	539	544	4	2	550	238	0.1	2.0
Lithuania	271	221	0	0	221	113	0.1	-18.5
Poland	1,814	1,958	8	7	1,973	1,006	0.5	8.8
Romania	194	216	5	2	223	119	0.1	14.9
Russian Federation	14,312	17,858	99	7	17,964	9,556	4.2	25.5
Slovakia	275	289	8	7	304	138	0.1	10.5
Ukraine	715	890	9	1	900	496	0.2	25.9

International Tourist Arrivals to Cambodia by Country of Residence in February 2014

(by all mean of transportations)

Regions Country of Residence	2013	2014			Total	Female	share	change
		Purpose of Visit					(%)	(%)
		Holiday	Business	Other			2014*	2014*/13
GRAND TOTAL	385,760	405,304	18,357	2,140	425,801	202,882	100.0	10.4
Southern Europe	5,168	5,919	126	34	6,079	2,532	1.4	17.6
Croatia	87	101	5	0	106	47	0.0	21.8
Greece	87	211	4	0	215	83	0.1	147.1
Italy	2,657	3,022	46	13	3,081	1,203	0.7	16.0
Portugal	308	324	9	0	333	157	0.1	8.1
Serbia	71	98	1	0	99	51	0.0	39.4
Slovenia	132	157	3	0	160	76	0.0	21.2
Spain	1,317	1,524	31	18	1,573	724	0.4	19.4
Turkey	509	482	27	3	512	191	0.1	0.6
Other Europe	592	97	13	4	114	50	0.0	-80.7
Americas	28,205	27,286	977	389	28,652	12,910	6.7	1.6
Argentina	744	887	1	4	892	460	0.2	19.9
Brazil	735	839	4	0	843	413	0.2	14.7
Canada	6,517	6,491	224	42	6,757	3,046	1.6	3.7
Chile	731	985	5	3	993	518	0.2	35.8
Colombia	76	98	3	5	106	53	0.0	39.5
Costa Rica	14	14	2	1	17	5	0.0	21.4
Ecuador	31	28	0	1	29	11	0.0	-6.5
Mexico	273	290	2	1	293	159	0.1	7.3
Peru	35	72	3	2	77	34	0.0	120.0
United States	18,808	17,475	726	328	18,529	8,150	4.4	-1.5
Uruguay	32	35	0	0	35	18	0.0	9.4
Other Americas	209	72	7	2	81	43	0.0	-61.2
Africa	519	350	30	2	382	161	0.1	-26.4
Cameroon	13	11	0	0	11	0	0.0	-15.4
Congo	4	1	0	0	1	0	0.0	-75.0
Ghana	10	39	4	0	43	18	0.0	330.0
Kenya	28	18	0	0	18	11	0.0	-35.7
Liberia	2	3	0	0	3	1	0.0	50.0
Nigeria	48	22	14	0	36	5	0.0	-25.0
Sudan	5	0	0	0	0	0	0.0	-100.0
South Africa	374	234	9	1	244	113	0.1	-34.8
Uganda	3	4	0	0	4	2	0.0	33.3
Other Africa	32	18	3	1	22	11	0.0	-31.3
Middle East	1,405	1,483	20	24	1,527	586	0.4	8.7
Egypt	20	25	0	0	25	7	0.0	25.0
Iran	69	36	6	1	43	11	0.0	-37.7
Iraq	8	4	0	1	5	0	0.0	-37.5
Israel	1,106	1,272	9	15	1,296	544	0.3	17.2
Kuwait	129	96	0	6	102	5	0.0	-20.9
Oman	14	10	0	0	10	1	0.0	-28.6
Palestine	3	9	0	0	9	4	0.0	200.0
Qatar	6	6	0	0	6	2	0.0	0.0
Saudi Arabia	22	3	3	0	6	0	0.0	-72.7
United Arab Emirates	3	2	0	0	2	1	0.0	-33.3
Yemen	9	10	0	0	10	4	0.0	11.1
Other Middle East	16	10	2	1	13	7	0.0	-18.8

COMPILED BY:

1. Mr. Kong Sopheareak

Director
Statistics & Tourism Information Department
Fax: +855 23 885003
E-mail: kong@mot.gov.kh

2. Mr. Horth Vanny

Chief of Tourism Statistics Office
Compile and data analysis
Tel.: +855 12 827664