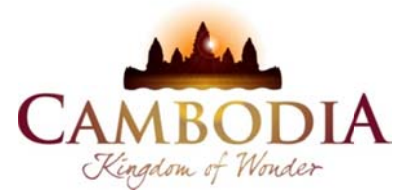




KINGDOM OF CAMBODIA
NATION RELIGION KING



TOURISM STATISTICS REPORT

October 2013

MINISTRY OF TOURISM

Statistics and Tourism Information Department

No. A3, Street 169, Sangkat Veal Vong, Khan 7 Makara, Phnom Penh, Cambodia.

Fax: +855 23 885003

E-mail: kong@mot.gov.kh

Web site: www.mot.gov.kh

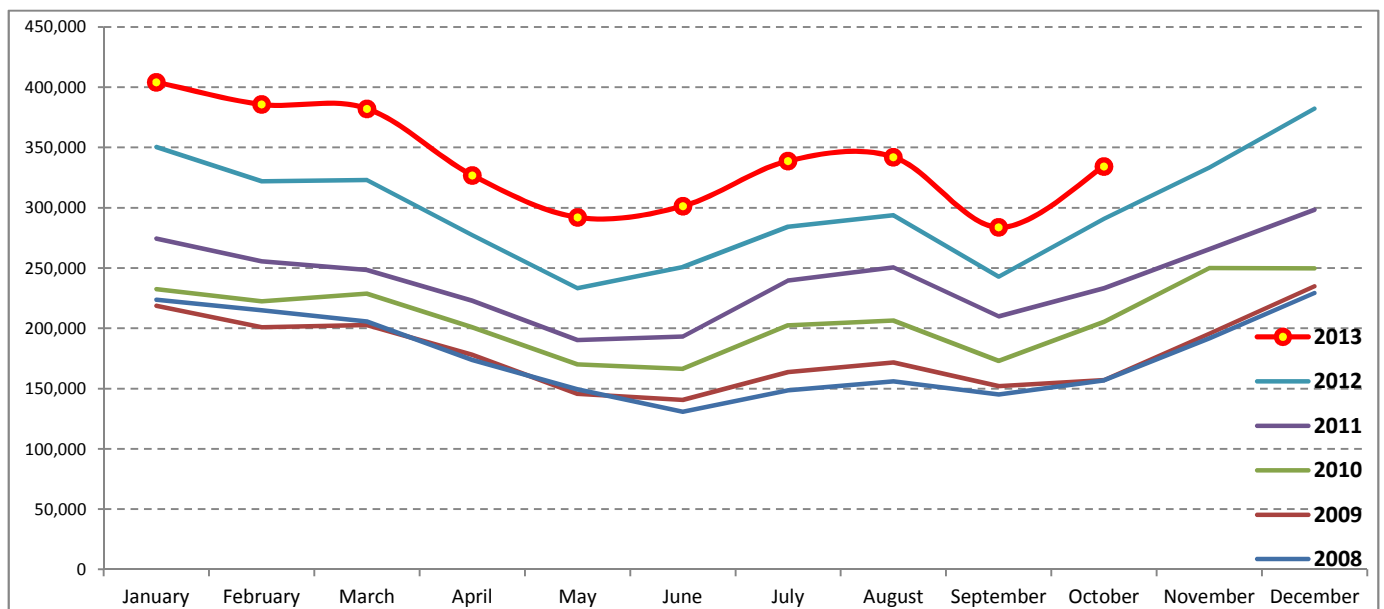
Tourism Highlights

International Tourist Arrivals, Average Length of Stay, Hotels Occupancy & Tourism Receipts 1993 - 2012

Years	Tourist Arrivals		Average Length	Hotels Occupancy	Tourism Receipts
	number	change (%)	of Stay (days)	(%)	(Million US\$)
1993	118,183	-	N/A	N/A	N/A
1994	176,617	49.4	N/A	N/A	N/A
1995	219,680	24.4	8.00	37.00	100
1996	260,489	18.6	7.50	40.00	118
1997	218,843	-16.0	6.40	30.00	103
1998	286,524	30.9	5.20	40.00	166
1999	367,743	28.3	5.50	44.00	190
2000	466,365	26.8	5.50	45.00	228
2001	604,919	29.7	5.50	48.00	304
2002	786,524	30.0	5.80	50.00	379
2003	701,014	-10.9	5.50	50.00	347
2004	1,055,202	50.5	6.30	52.00	578
2005	1,421,615	34.7	6.30	52.00	832
2006	1,700,041	19.6	6.50	54.79	1,049
2007	2,015,128	18.5	6.50	54.79	1,400
2008	2,125,465	5.5	6.65	62.68	1,595
2009	2,161,577	1.7	6.45	63.57	1,561
2010	2,508,289	16.0	6.45	65.74	1,786
2011	2,881,862	14.9	6.50	66.15	1,912
2012	3,584,307	24.4	6.30	68.49	2,210

International tourist arrivals to Cambodia

Destination	Months	2008	2009	2010	2011	2012	2013	change (%) 2013*/12
Cambodia	Q1	644,205	622,288	683,692	778,467	995,210	1,172,072	17.8
<i>International tourist arrivals by all means of transportations</i>	January	223,581	218,691	232,590	274,471	350,257	404,106	15.4
	February	214,902	200,789	222,354	255,499	321,870	385,760	19.8
	March	205,722	202,808	228,748	248,497	323,083	382,206	18.3
	Q2	454,031	464,230	537,464	606,562	761,442	920,527	20.9
	April	173,903	177,955	200,965	223,032	277,304	327,000	17.9
	May	149,275	145,564	170,164	190,258	233,220	292,115	25.3
	June	130,853	140,711	166,335	193,272	250,918	301,412	20.1
	Q3	449,693	487,422	582,024	699,760	820,888	964,612	17.5
	July	148,449	163,817	202,349	239,527	284,282	338,761	19.2
	August	156,098	171,668	206,563	250,429	293,859	342,064	16.4
	September	145,146	151,937	173,112	209,804	242,747	283,787	16.9
	Q4	577,536	587,637	705,109	797,073	1,006,767	334,410	
	October	156,718	157,105	205,515	233,190	290,959	334,410	14.9
	November	191,549	195,570	249,892	265,539	333,482		
	December	229,269	234,962	249,702	298,344	382,326		
	Total	2,125,465	2,161,577	2,508,289	2,881,862	3,584,307	3,391,621	18.2



Source: Statistics and Tourism Information Department, MOT

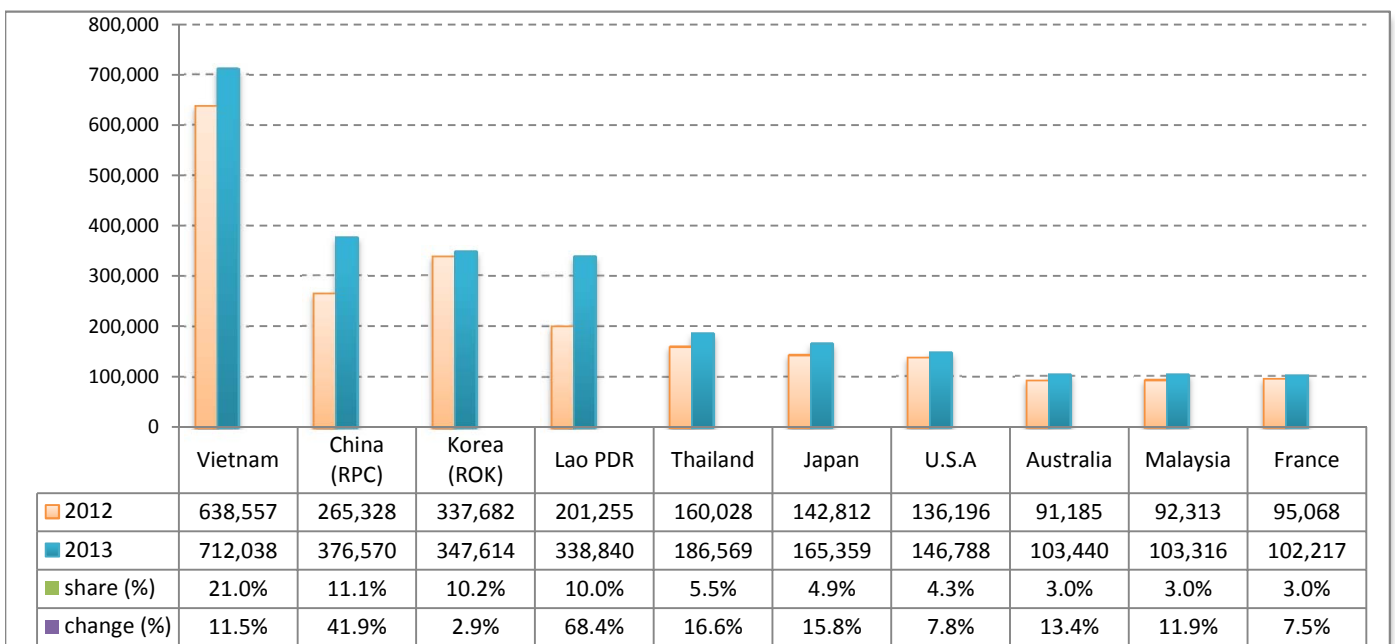
Executive Summary Report in the First Ten Months of 2013

I. International tourist arrivals to Cambodia in January - October 2013 was: **3,391,621**

II. Mode of arrivals

	arrivals	share (%)
Air	1,593,287	47.0
Phnom Penh Int'l Airport	668,619	19.7
Siem Reap Int'l Airport	924,668	27.3
Land and Water ways	1,798,334	53.0
Land	1,739,837	51.3
Waterway	58,497	1.7
Total	3,391,621	100.0

III. Top ten markets arrivals in January - October 2013



IV. International tourist arrivals to Cambodia in January - October 2013

	Inbound tourism		share (%)		change (%)
	2012	2013	2012	2013	2013*/12
Air	1,362,328	1,593,287	47.5	47.0	17.0
Phnom Penh Int'l Airport	570,819	668,619	19.9	19.7	17.1
Siem Reap Int'l Airport	791,509	924,668	27.6	27.3	16.8
Land and Water ways	1,506,171	1,798,334	52.5	53.0	19.4
Land	1,445,971	1,739,837	50.4	51.3	20.3
Waterway	60,200	58,497	2.1	1.7	-2.8
Total	2,868,499	3,391,621	100.0	100.0	18.2

V. Remark: Percentage share of international tourist arrivals at destinations in January - October 2013

	Arrivals		share (%)		change (%)
	2012	2013	2012	2013	2013*/12
Phnom Penh & Other Destinations	1,222,219	1,621,435	42.6	47.8	32.7
Siem Reap Province	1,646,280	1,770,186	57.4	52.2	7.5
Total	2,868,499	3,391,621	100.0	100.0	18.2

VI. Outbound tourism in January - October 2013

	Outbound tourism		change (%)
	2012	2013	2013*/12
Cambodian outbound tourists	656,240	722,680	10.1
International outbound tourists	2,815,311	3,385,662	20.3

International Tourist Arrivals to Cambodia by Country of Residence in January - October 2013

(by all mean of transportations)

Regions Country of Residence	2012		2013			share		change	
			Purpose of Visit			Total	Female	(%)	(%)
			Holiday	Business	Other			2013*	2013*/12
GRAND TOTAL	2,868,499	3,207,959	155,708	27,954	3,391,621	1,589,882	100.0	18.2	
Asia and the Pacific	2,195,272	2,491,482	125,204	16,209	2,632,895	1,259,553	77.6	19.9	
ASEAN (South-East Asia)	1,234,048	1,468,531	33,335	7,909	1,509,775	746,733	44.5	22.3	
Brunei Darussalam	726	487	10	47	544	222	0.0	-25.1	
Indonesia	17,972	19,479	3,231	211	22,921	7,104	0.7	27.5	
Lao PDR	201,255	338,377	102	361	338,840	218,407	10.0	68.4	
Malaysia	92,313	96,240	6,882	194	103,316	35,947	3.0	11.9	
Myanmar	3,604	3,442	482	213	4,137	1,725	0.1	14.8	
Philippines	79,993	91,693	5,615	643	97,951	57,976	2.9	22.4	
Singapore	39,600	41,155	2,144	160	43,459	15,016	1.3	9.7	
Thailand	160,028	174,611	8,118	3,840	186,569	79,434	5.5	16.6	
Vietnam	638,557	703,047	6,751	2,240	712,038	330,902	21.0	11.5	
North-East Asia	827,860	886,866	82,123	5,579	974,568	451,756	28.7	17.7	
China (RPC)	265,328	326,119	48,120	2,331	376,570	178,863	11.1	41.9	
Hong Kong SAR	6,099	5,574	159	12	5,745	2,837	0.2	-5.8	
Japan	142,812	153,979	9,697	1,683	165,359	68,746	4.9	15.8	
Korea (ROK)	337,682	332,078	14,122	1,414	347,614	167,801	10.2	2.9	
Mongolia	289	289	25	22	336	152	0.0	16.3	
Taiwan, China	75,650	68,827	10,000	117	78,944	33,357	2.3	4.4	
Southern Asia	19,452	19,793	3,411	842	24,046	6,296	0.7	23.6	
Afghanistan	120	221	2	19	242	23	0.0	101.7	
Bangladesh	994	1,122	186	121	1,429	175	0.0	43.8	
Bhutan	120	49	12	18	79	22	0.0	-34.2	
India	14,915	16,000	2,330	440	18,770	5,295	0.6	25.8	
Nepal	1,169	881	212	117	1,210	292	0.0	3.5	
Pakistan	955	554	334	64	952	160	0.0	-0.3	
Srilanka	1,179	966	335	63	1,364	329	0.0	15.7	
Western Asia	1,871	2,237	211	22	2,470	1,357	0.1	32.0	
Kazakhstan	1,404	1,792	179	16	1,987	1,054	0.1	41.5	
Uzbekistan	467	445	32	6	483	303	0.0	3.4	
Oceania	105,230	111,511	5,814	1,620	118,945	52,067	3.5	13.0	
Australia	91,185	97,064	4,944	1,432	103,440	45,532	3.0	13.4	
Fiji	90	64	13	10	87	31	0.0	-3.3	
New Zealand	13,955	14,383	857	178	15,418	6,504	0.5	10.5	
Other Asia & the Pacific	6,811	2,544	310	237	3,091	1,344	0.1	-54.6	
Europe	467,452	510,445	19,502	6,568	536,515	234,043	15.8	14.8	
Northern Europe	126,133	133,739	6,036	1,529	141,304	56,371	4.2	12.0	
Denmark	7,685	8,044	266	101	8,411	3,446	0.2	9.4	
Finland	4,700	4,855	210	92	5,157	1,887	0.2	9.7	
Iceland	436	661	40	13	714	292	0.0	63.8	
Ireland	7,227	7,771	321	79	8,171	3,508	0.2	13.1	
Norway	6,512	7,152	231	93	7,476	3,082	0.2	14.8	
Sweden	11,741	11,777	426	196	12,399	4,660	0.4	5.6	
United Kingdom	87,832	93,479	4,542	955	98,976	39,496	2.9	12.7	
Western Europe	199,365	206,740	9,889	3,985	220,614	91,886	6.5	10.7	
Austria	6,218	6,674	182	81	6,937	2,786	0.2	11.6	
Belgium	11,342	11,527	595	217	12,339	4,910	0.4	8.8	
France	95,068	93,758	6,081	2,378	102,217	43,386	3.0	7.5	
Germany	54,104	58,818	1,667	760	61,245	25,099	1.8	13.2	
Luxembourg	340	401	12	5	418	175	0.0	22.9	
Monaco	41	94	6	1	101	54	0.0	146.3	
Netherlands	18,792	21,282	797	312	22,391	9,326	0.7	19.2	
Switzerland	13,460	14,186	549	231	14,966	6,150	0.4	11.2	
Central / Eastern Europe	90,364	118,882	1,795	395	121,072	63,367	3.6	34.0	
Bulgaria	480	629	11	16	656	316	0.0	36.7	
Czech Republic	2,994	3,423	58	43	3,524	1,456	0.1	17.7	
Estonia	654	903	37	27	967	385	0.0	47.9	
Hungary	1,917	2,252	31	21	2,304	1,008	0.1	20.2	
Lithuania	778	1,167	11	2	1,180	579	0.0	51.7	
Poland	6,569	8,692	79	49	8,820	4,379	0.3	34.3	
Romania	1,000	1,025	59	7	1,091	569	0.0	9.1	
Russian Federation	71,020	95,034	1,340	176	96,550	51,728	2.8	35.9	
Slovakia	1,305	1,557	85	34	1,676	696	0.0	28.4	
Ukraine	3,647	4,200	84	20	4,304	2,251	0.1	18.0	

International Tourist Arrivals to Cambodia by Country of Residence in January - October 2013

(by all mean of transportations)

Regions Country of Residence	2012		2013			share		change	
			Purpose of Visit			Total	Female	(%)	(%)
			Holiday	Business	Other			2013*	2013*/12
GRAND TOTAL	2,868,499	3,207,959	155,708	27,954	3,391,621	1,589,882	100.0	18.2	
Southern Europe	45,884	48,841	1,574	493	50,908	21,299	1.5	10.9	
Croatia	513	524	17	9	550	248	0.0	7.2	
Greece	860	862	30	7	899	307	0.0	4.5	
Italy	17,400	18,438	641	217	19,296	7,295	0.6	10.9	
Portugal	2,273	3,000	109	22	3,131	1,497	0.1	37.7	
Serbia	312	428	31	13	472	253	0.0	51.3	
Slovenia	692	901	49	8	958	393	0.0	38.4	
Spain	21,156	21,154	369	165	21,688	10,003	0.6	2.5	
Turkey	2,678	3,534	328	52	3,914	1,303	0.1	46.2	
Other Europe	5,706	2,243	208	166	2,617	1,120	0.1	-54.1	
Americas	192,612	193,744	10,172	4,777	208,693	91,584	6.2	8.3	
Argentina	3,842	4,823	34	45	4,902	2,450	0.1	27.6	
Brazil	3,944	5,245	49	56	5,350	2,531	0.2	35.6	
Canada	37,504	37,286	1,913	454	39,653	17,518	1.2	5.7	
Chile	2,520	3,331	67	19	3,417	1,740	0.1	35.6	
Colombia	1,235	1,356	37	26	1,419	694	0.0	14.9	
Costa Rica	216	231	9	7	247	127	0.0	14.4	
Ecuador	160	175	12	10	197	95	0.0	23.1	
Mexico	3,167	3,778	39	31	3,848	1,895	0.1	21.5	
Peru	453	522	31	14	567	274	0.0	25.2	
United States	136,196	134,992	7,817	3,979	146,788	63,146	4.3	7.8	
Uruguay	445	553	8	8	569	268	0.0	27.9	
Other Americas	2,930	1,452	156	128	1,736	846	0.1	-40.8	
Africa	4,370	3,815	485	247	4,547	1,766	0.1	4.1	
Cameroon	203	92	4	20	116	15	0.0	-42.9	
Congo	54	39	3	7	49	14	0.0	-9.3	
Ghana	130	106	7	12	125	41	0.0	-3.8	
Kenya	204	167	17	39	223	108	0.0	9.3	
Liberia	82	41	0	1	42	9	0.0	-48.8	
Nigeria	480	268	225	36	529	55	0.0	10.2	
Sudan	41	38	7	4	49	6	0.0	19.5	
South Africa	2,584	2,745	180	69	2,994	1,330	0.1	15.9	
Uganda	63	33	2	11	46	17	0.0	-27.0	
Other Africa	529	286	40	48	374	171	0.0	-29.3	
Middle East	8,793	8,473	345	153	8,971	2,936	0.3	2.0	
Egypt	167	210	52	14	276	54	0.0	65.3	
Iran	519	517	22	4	543	141	0.0	4.6	
Iraq	76	109	2	6	117	33	0.0	53.9	
Israel	6,472	5,823	235	42	6,100	2,425	0.2	-5.7	
Kuwait	597	951	2	15	968	36	0.0	62.1	
Oman	121	172	0	2	174	16	0.0	43.8	
Palestine	40	79	2	6	87	14	0.0	117.5	
Qatar	61	82	0	9	91	38	0.0	49.2	
Saudi Arabia	69	113	2	6	121	18	0.0	75.4	
United Arab Emirates	205	128	0	2	130	16	0.0	-36.6	
Yemen	137	101	8	14	123	24	0.0	-10.2	
Other Middle East	329	188	20	33	241	121	0.0	-26.7	

Remark:

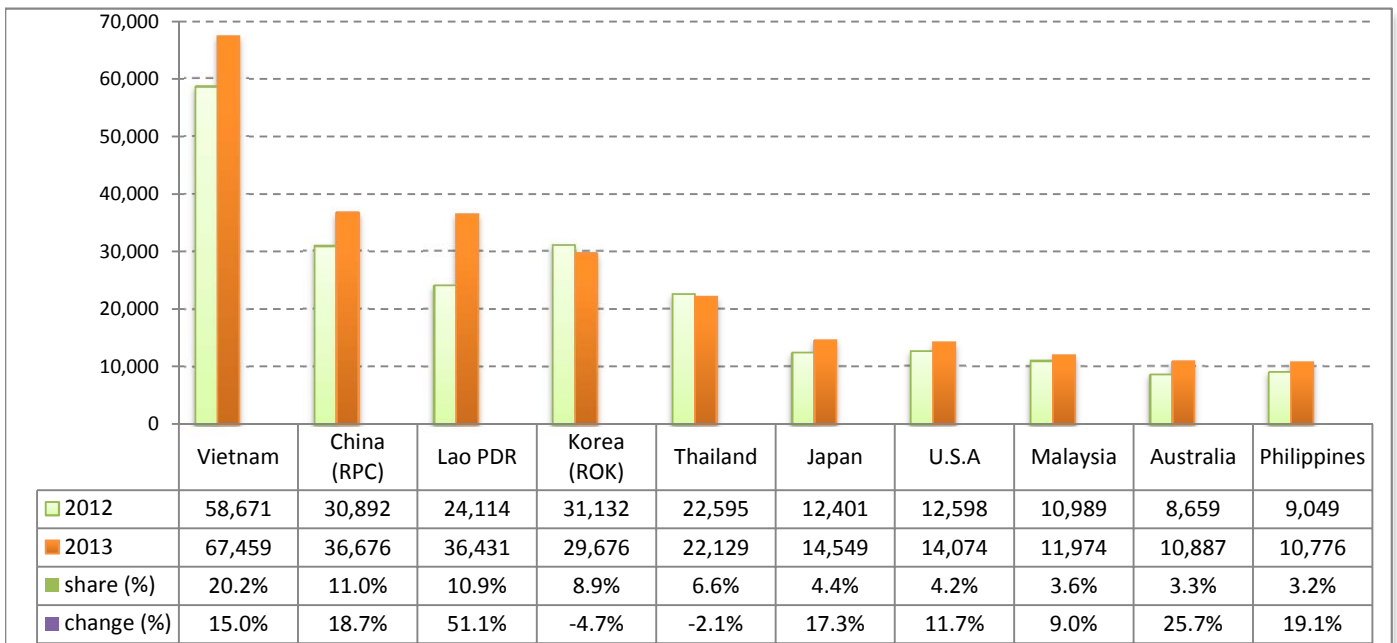
- Cambodian outbound tourist departures: 722,680
 - International outbound tourist departures: 3,385,662

I. International tourist arrivals to Cambodia in October 2013 was: **334,410**

II. Mode of arrivals

	arrivals	share (%)
Air	156,060	46.7
Phnom Penh Int'l Airport	67,988	20.3
Siem Reap Int'l Airport	88,072	26.3
Land and Water ways	178,350	53.3
Land	171,198	51.2
Waterway	7,152	2.1
Total	334,410	100.0

III. Top ten markets arrivals in October 2013



IV. International tourist arrivals to Cambodia in October 2013

	Inbound tourism		share (%)		change (%)
	2012	2013	2012	2013	2013*/12
Air	140,908	156,060	48.4	46.7	10.8
Phnom Penh Int'l Airport	60,437	67,988	20.8	20.3	12.5
Siem Reap Int'l Airport	80,471	88,072	27.7	26.3	9.4
Land and Water ways	150,051	178,350	51.6	53.3	18.9
Land	146,167	171,198	50.2	51.2	17.1
Waterway	3,884	7,152	1.3	2.1	84.1
Total	290,959	334,410	100.0	100.0	14.9

V. Remark: Percentage share of international tourist arrivals at destinations in October 2013

	Arrivals		share (%)		change (%)
	2012	2013	2012	2013	2013*/12
Phnom Penh & Other Destinations	131,892	138,147	45.3	41.3	4.7
Siem Reap Province	159,067	196,263	54.7	58.7	23.4
Total	290,959	334,410	100.0	100.0	14.9

VI. Outbound tourism in October 2013

	Outbound tourism		change (%)
	2012	2013	2013*/12
Cambodian outbound tourists	70,435	78,287	11.1
International outbound tourists	278,170	318,058	14.3

International Tourist Arrivals to Cambodia by Country of Residence in October 2013

(by all mean of transportations)

Regions Country of Residence	2012		2013			share		change
			Purpose of Visit		Total	Female	(%)	(%)
			Holiday	Business	Other			2013*
GRAND TOTAL	290,959	313,056	18,251	3,103	334,410	158,739	100.0	14.9
Asia and the Pacific	229,830	245,205	14,851	1,914	261,970	126,289	78.3	14.0
ASEAN (South-East Asia)	131,890	151,479	4,160	675	156,314	79,127	46.7	18.5
Brunei Darussalam	45	51	1	5	57	21	0.0	26.7
Indonesia	1,880	1,986	405	20	2,411	736	0.7	28.2
Lao PDR	24,114	36,385	6	40	36,431	24,125	10.9	51.1
Malaysia	10,989	11,092	861	21	11,974	4,000	3.6	9.0
Myanmar	246	287	50	25	362	121	0.1	47.2
Philippines	9,049	10,026	691	59	10,776	6,426	3.2	19.1
Singapore	4,301	4,360	331	24	4,715	1,692	1.4	9.6
Thailand	22,595	20,820	970	339	22,129	10,221	6.6	-2.1
Vietnam	58,671	66,472	845	142	67,459	31,785	20.2	15.0
North-East Asia	83,380	79,227	9,619	883	89,729	40,495	26.8	7.6
China (RPC)	30,892	30,671	5,563	442	36,676	17,587	11.0	18.7
Hong Kong SAR	688	959	28	3	990	512	0.3	43.9
Japan	12,401	13,237	1,083	229	14,549	5,964	4.4	17.3
Korea (ROK)	31,132	27,775	1,699	202	29,676	13,198	8.9	-4.7
Mongolia	22	54	7	1	62	25	0.0	181.8
Taiwan, China	8,245	6,531	1,239	6	7,776	3,209	2.3	-5.7
Southern Asia	2,112	2,398	363	125	2,886	858	0.9	36.6
Afghanistan	10	4	0	1	5	1	0.0	-50.0
Bangladesh	96	86	27	10	123	23	0.0	28.1
Bhutan	5	3	0	0	3	0	0.0	-40.0
India	1,676	2,016	236	85	2,337	735	0.7	39.4
Nepal	123	120	27	10	157	45	0.0	27.6
Pakistan	76	64	26	5	95	15	0.0	25.0
Sri Lanka	126	105	47	14	166	39	0.0	31.7
Western Asia	143	165	20	5	190	109	0.1	32.9
Kazakhstan	106	131	13	2	146	84	0.0	37.7
Uzbekistan	37	34	7	3	44	25	0.0	18.9
Oceania	10,034	11,668	672	203	12,543	5,536	3.8	25.0
Australia	8,659	10,123	577	187	10,887	4,807	3.3	25.7
Fiji	15	7	3	2	12	7	0.0	-20.0
New Zealand	1,360	1,538	92	14	1,644	722	0.5	20.9
Other Asia & the Pacific	2,271	268	17	23	308	164	0.1	-86.4
Europe	42,076	48,518	2,250	694	51,462	23,273	15.4	22.3
Northern Europe	11,335	12,442	716	161	13,319	5,534	4.0	17.5
Denmark	632	561	37	8	606	237	0.2	-4.1
Finland	315	344	22	12	378	135	0.1	20.0
Iceland	20	27	2	2	31	11	0.0	55.0
Ireland	753	822	33	6	861	385	0.3	14.3
Norway	484	613	17	4	634	280	0.2	31.0
Sweden	907	797	44	11	852	336	0.3	-6.1
United Kingdom	8,224	9,278	561	118	9,957	4,150	3.0	21.1
Western Europe	16,335	18,018	1,161	419	19,598	8,198	5.9	20.0
Austria	438	518	20	5	543	238	0.2	24.0
Belgium	833	1,044	68	31	1,143	434	0.3	37.2
France	7,756	7,690	752	200	8,642	3,579	2.6	11.4
Germany	4,718	5,708	179	93	5,980	2,587	1.8	26.7
Luxembourg	34	34	1	0	35	11	0.0	2.9
Monaco	5	13	0	0	13	8	0.0	160.0
Netherlands	1,608	1,737	79	67	1,883	738	0.6	17.1
Switzerland	943	1,274	62	23	1,359	603	0.4	44.1
Central / Eastern Europe	8,657	12,792	177	42	13,011	7,160	3.9	50.3
Bulgaria	60	71	0	1	72	35	0.0	20.0
Czech Republic	211	289	16	3	308	125	0.1	46.0
Estonia	77	93	1	0	94	39	0.0	22.1
Hungary	216	192	2	7	201	93	0.1	-6.9
Lithuania	66	104	0	0	104	55	0.0	57.6
Poland	527	858	9	3	870	468	0.3	65.1
Romania	131	161	3	2	166	89	0.0	26.7
Russian Federation	6,847	10,462	130	19	10,611	5,959	3.2	55.0
Slovakia	111	94	8	6	108	40	0.0	-2.7
Ukraine	411	468	8	1	477	257	0.1	16.1

International Tourist Arrivals to Cambodia by Country of Residence in October 2013

(by all mean of transportations)

Regions Country of Residence	2012	2013			Total	Female	share	change
		Purpose of Visit					(%)	(%)
		Holiday	Business	Other			2013*	2013*/12
GRAND TOTAL	290,959	313,056	18,251	3,103	334,410	158,739	100.0	14.9
Southern Europe	4,391	5,025	183	55	5,263	2,239	1.6	19.9
Croatia	26	41	0	0	41	17	0.0	57.7
Greece	60	52	3	1	56	8	0.0	-6.7
Italy	1,264	1,204	83	28	1,315	455	0.4	4.0
Portugal	211	316	9	5	330	165	0.1	56.4
Serbia	58	34	3	0	37	27	0.0	-36.2
Slovenia	46	144	4	1	149	45	0.0	223.9
Spain	2,087	2,316	52	17	2,385	1,107	0.7	14.3
Turkey	639	918	29	3	950	415	0.3	48.7
Other Europe	1,358	241	13	17	271	142	0.1	-80.0
Americas	17,647	18,323	1,061	474	19,858	8,866	5.9	12.5
Argentina	315	300	3	5	308	159	0.1	-2.2
Brazil	425	608	3	16	627	296	0.2	47.5
Canada	3,106	3,216	228	45	3,489	1,593	1.0	12.3
Chile	247	273	0	1	274	140	0.1	10.9
Colombia	133	156	2	2	160	90	0.0	20.3
Costa Rica	18	25	2	1	28	11	0.0	55.6
Ecuador	18	16	1	3	20	10	0.0	11.1
Mexico	358	533	2	5	540	285	0.2	50.8
Peru	55	68	7	4	79	42	0.0	43.6
United States	12,598	12,895	800	379	14,074	6,099	4.2	11.7
Uruguay	10	14	2	0	16	7	0.0	60.0
Other Americas	364	219	11	13	243	134	0.1	-33.2
Africa	558	359	62	11	432	149	0.1	-22.6
Cameroon	45	9	0	0	9	2	0.0	-80.0
Congo	7	8	0	0	8	3	0.0	14.3
Ghana	10	4	0	1	5	2	0.0	-50.0
Kenya	22	13	1	1	15	6	0.0	-31.8
Liberia	6	3	0	0	3	2	0.0	-50.0
Nigeria	46	34	24	0	58	6	0.0	26.1
Sudan	5	8	5	0	13	3	0.0	160.0
South Africa	305	257	30	6	293	112	0.1	-3.9
Uganda	5	2	0	0	2	0	0.0	-60.0
Other Africa	107	21	2	3	26	13	0.0	-75.7
Middle East	848	651	27	10	688	162	0.2	-18.9
Egypt	20	43	3	1	47	8	0.0	135.0
Iran	33	35	0	0	35	6	0.0	6.1
Iraq	5	6	0	0	6	0	0.0	20.0
Israel	621	387	20	3	410	121	0.1	-34.0
Kuwait	77	119	1	1	121	5	0.0	57.1
Oman	12	8	0	0	8	1	0.0	-33.3
Palestine	6	4	0	0	4	1	0.0	-33.3
Qatar	3	3	0	0	3	0	0.0	0.0
Saudi Arabia	7	6	0	0	6	0	0.0	-14.3
United Arab Emirates	23	6	0	1	7	1	0.0	-69.6
Yemen	9	17	1	1	19	8	0.0	111.1
Other Middle East	32	17	2	3	22	11	0.0	-31.3

Remark:

- Cambodian outbound tourist departures: 78,287
- International outbound tourist departures: 318,058

COMPILED BY:

1. Mr. Kong Sopheareak

Director
Statistics & Tourism Information Department
Fax: +855 23 885003
E-mail: kong@mot.gov.kh

2. Mr. Horth Vanny

Chief of Tourism Statistics Office
Compile and data analysis
Tel.: +855 12 827664