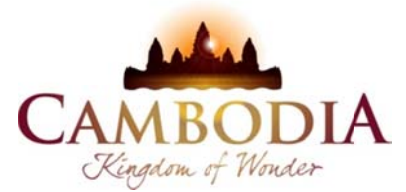




KINGDOM OF CAMBODIA
NATION RELIGION KING



TOURISM STATISTICS REPORT

November 2012

MINISTRY OF TOURISM

Statistics and Tourism Information Department

No. A3, Street 169, Sangkat Veal Vong, Khan 7 Makara, Phnom Penh, Cambodia.

Fax: +855 23 885003

E-mail: kong@mot.gov.kh

Web site: www.mot.gov.kh

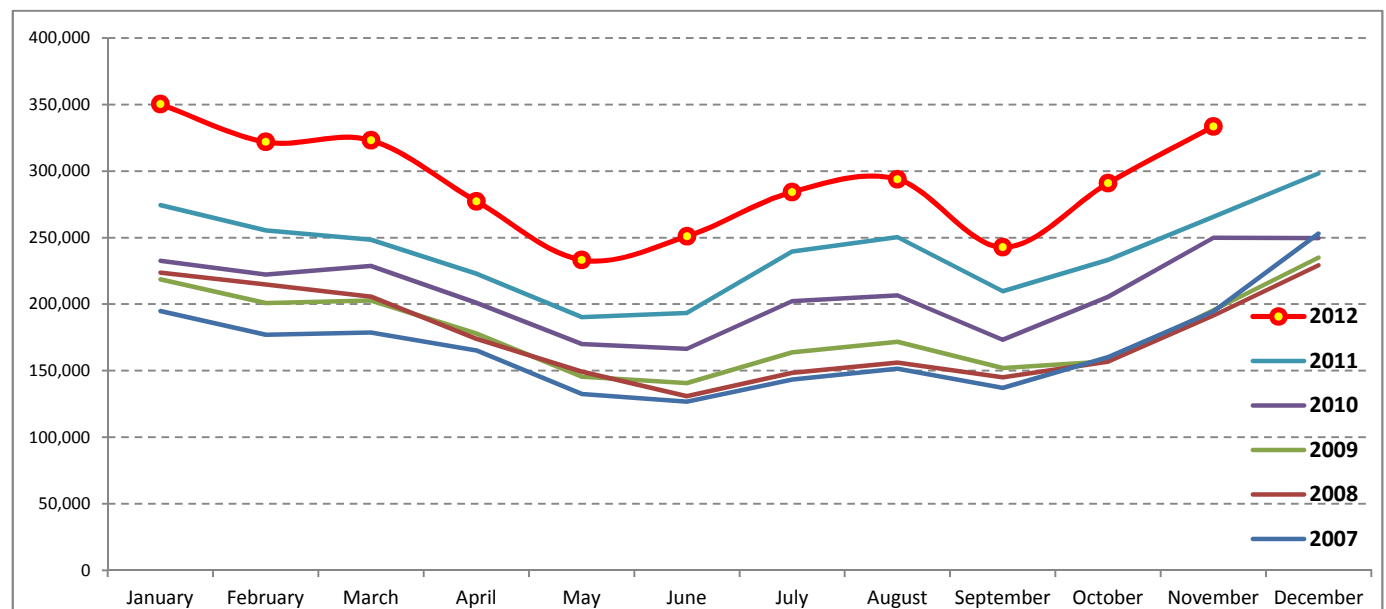
Tourism Highlights

International Tourist Arrivals, Average Length of Stay, Hotels Occupancy & Tourism Receipts 1993 - 2011

Years	Tourist Arrivals		Average Length	Hotels Occupancy	Tourism Receipts
	number	change (%)	of Stay (days)	(%)	(Million US\$)
1993	118,183	-	N/A	N/A	N/A
1994	176,617	49.4	N/A	N/A	N/A
1995	219,680	24.4	8.00	37.00	100
1996	260,489	18.6	7.50	40.00	118
1997	218,843	-16.0	6.40	30.00	103
1998	286,524	30.9	5.20	40.00	166
1999	367,743	28.3	5.50	44.00	190
2000	466,365	26.8	5.50	45.00	228
2001	604,919	29.7	5.50	48.00	304
2002	786,524	30.0	5.80	50.00	379
2003	701,014	-10.9	5.50	50.00	347
2004	1,055,202	50.5	6.30	52.00	578
2005	1,421,615	34.7	6.30	52.00	832
2006	1,700,041	19.6	6.50	54.79	1,049
2007	2,015,128	18.5	6.50	54.79	1,400
2008	2,125,465	5.5	6.65	62.68	1,595
2009	2,161,577	1.7	6.45	63.57	1,561
2010	2,508,289	16.0	6.45	65.74	1,786
2011	2,881,862	14.9	6.50	66.15	1,912

International tourist arrivals to Cambodia

Destination	Months	2007	2008	2009	2010	2011	2012	change (%) 2012*/11
Cambodia	Q1	550,813	644,205	622,288	683,692	778,467	995,210	27.8
<i>International tourist arrivals</i>	January	194,932	223,581	218,691	232,590	274,471	350,257	27.6
<i>by all means of</i>	February	177,130	214,902	200,789	222,354	255,499	321,870	26.0
<i>transportations</i>	March	178,751	205,722	202,808	228,748	248,497	323,083	30.0
	Q2	424,536	454,031	464,230	537,464	606,562	761,442	25.5
	April	165,347	173,903	177,955	200,965	223,032	277,304	24.3
	May	132,512	149,275	145,564	170,164	190,258	233,220	22.6
	June	126,677	130,853	140,711	166,335	193,272	250,918	29.8
	Q3	431,815	449,693	487,422	582,024	699,760	820,888	17.3
	July	143,310	148,449	163,817	202,349	239,527	284,282	18.7
	August	151,478	156,098	171,668	206,563	250,429	293,859	17.3
	September	137,027	145,146	151,937	173,112	209,804	242,747	15.7
	Q4	607,964	577,536	587,637	705,109	797,073	624,441	
	October	160,235	156,718	157,105	205,515	233,190	290,959	24.8
	November	194,646	191,549	195,570	249,892	265,539	333,482	25.6
	December	253,083	229,269	234,962	249,702	298,344		
	Total	2,015,128	2,125,465	2,161,577	2,508,289	2,881,862	3,201,981	23.9



Source: Statistics and Tourism Information Department, MOT

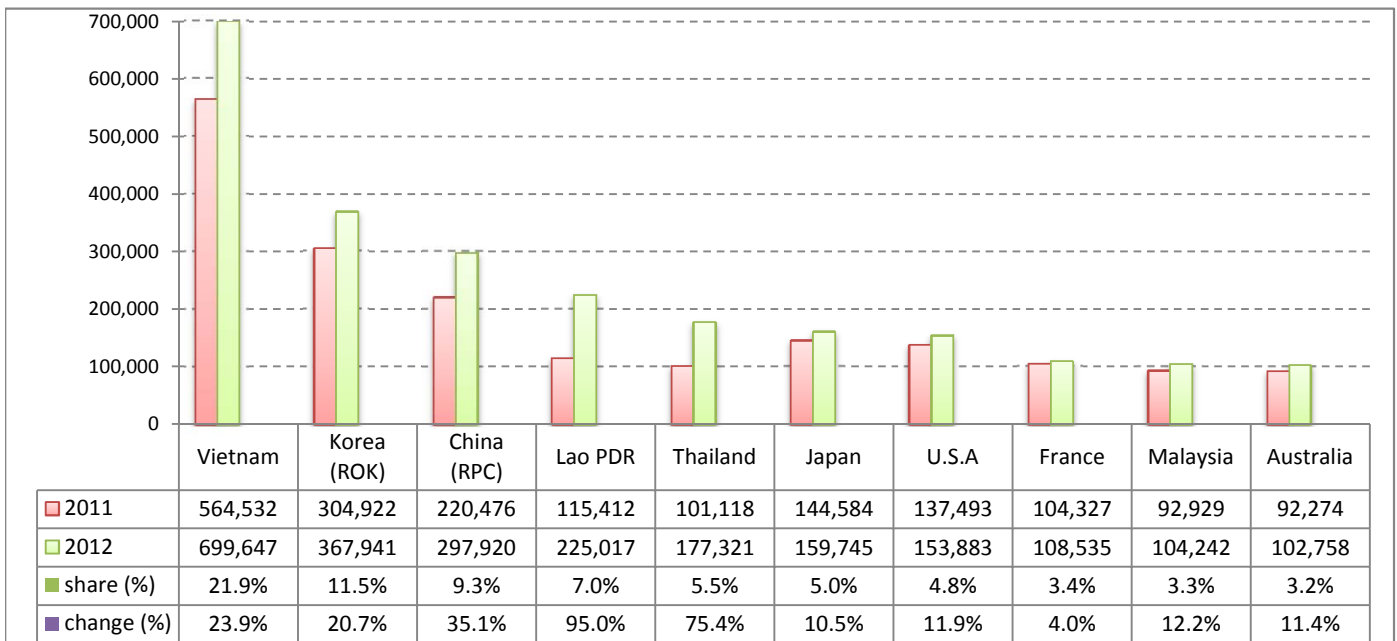
Executive Summary Report in the First Eleven Months of 2012

I. International tourist arrivals to Cambodia in January - November was: **3,201,981**

II. Mode of arrivals

	visitors	share (%)
Air	1,531,161	47.8
Phnom Penh Int'l Airport	641,407	20.0
Siem Reap Int'l Airport	889,754	27.8
Land and Water ways	1,670,820	52.2
Land	1,602,747	50.1
Waterway	68,073	2.1
Total	3,201,981	100.0

III. Top ten markets arrivals in January - November 2012



IV. International tourist arrivals to Cambodia in January - November 2012

	Inbound tourism		share (%)		change (%)
	2011	2012	2011	2012	2012*/11
Air	1,317,897	1,531,161	51.0	47.8	16.2
Phnom Penh Int'l Airport	582,459	641,407	22.5	20.0	10.1
Siem Reap Int'l Airport	735,438	889,754	28.5	27.8	21.0
Land and Water ways	1,265,621	1,670,820	49.0	52.2	32.0
Land	1,190,801	1,602,747	46.1	50.1	34.6
Waterway	74,820	68,073	2.9	2.1	-9.0
Total	2,583,518	3,201,981	100.0	100.0	23.9

V. Remark: Percentage share of international tourist arrivals at destinations in January - November 2012

	Arrivals		share (%)		change (%)
	2011	2012	2011	2012	2012*/11
Phnom Penh & Other Destinations	1,145,308	1,365,087	44.3	42.6	19.2
Siem Reap Province	1,438,210	1,836,894	55.7	57.4	27.7
Total	2,583,518	3,201,981	100.0	100.0	23.9

VI. Outbound tourists departures in January - November 2012

	Outbound tourism		change (%)
	2011	2012	2012*/11
Cambodian outbound tourists	639,484	726,217	13.6
International outbound tourists	2,558,319	3,130,454	22.4

International Tourist Arrivals to Cambodia by Country of Residence in January - November 2012

(by all mean of transportations)

Regions Country of Residence	2011		2012			share		change	
			Purpose of Visit			Total	Female	(%)	(%)
			Holiday	Business	Other			2012*	2012*/11
GRAND TOTAL	2,583,518	2,931,923	153,431	116,627	3,201,981	1,452,794	100.0	23.9	
Asia and the Pacific	1,893,574	2,254,705	121,131	56,189	2,432,025	1,124,162	76.0	28.4	
ASEAN	996,970	1,302,525	31,085	32,033	1,365,643	640,755	42.6	37.0	
Brunei Darussalam	438	720	13	142	875	340	0.0	99.8	
Indonesia	14,040	17,156	2,431	577	20,164	6,637	0.6	43.6	
Lao PDR	115,412	224,301	101	615	225,017	151,402	7.0	95.0	
Malaysia	92,929	97,291	6,145	806	104,242	36,531	3.3	12.2	
Myanmar	3,723	3,217	562	279	4,058	1,629	0.1	9.0	
Philippines	63,169	81,960	5,714	942	88,616	52,648	2.8	40.3	
Singapore	41,609	43,414	1,955	334	45,703	16,113	1.4	9.8	
Thailand	101,118	160,788	7,869	8,664	177,321	80,106	5.5	75.4	
Vietnam	564,532	673,678	6,295	19,674	699,647	295,349	21.9	23.9	
Eastern Asia	765,281	827,604	79,035	9,660	916,299	422,765	28.6	19.7	
China (RPC)	220,476	249,758	45,386	2,776	297,920	136,066	9.3	35.1	
Hong Kong SAR	4,817	6,723	263	52	7,038	3,408	0.2	46.1	
Japan	144,584	148,957	8,246	2,542	159,745	69,349	5.0	10.5	
Korea (ROK)	304,922	350,416	14,658	2,867	367,941	178,794	11.5	20.7	
Mongolia	226	253	28	34	315	163	0.0	39.4	
Taiwan, China	90,256	71,497	10,454	1,389	83,340	34,985	2.6	-7.7	
Southern Asia	17,731	17,381	3,282	986	21,649	5,637	0.7	22.1	
Afghanistan	111	92	13	25	130	18	0.0	17.1	
Bangladesh	1,164	848	187	126	1,161	140	0.0	-0.3	
Bhutan	79	90	6	27	123	23	0.0	55.7	
India	13,344	13,835	2,253	546	16,634	4,672	0.5	24.7	
Nepal	1,026	1,015	166	94	1,275	331	0.0	24.3	
Pakistan	1,025	627	355	74	1,056	207	0.0	3.0	
Srilanka	982	874	302	94	1,270	246	0.0	29.3	
Western Asia	1,746	1,911	191	15	2,117	1,150	0.1	21.2	
Kazakhstan	1,079	1,447	146	11	1,604	808	0.1	48.7	
Uzbekistan	667	464	45	4	513	342	0.0	-23.1	
Oceania	106,422	100,776	6,097	12,482	119,355	51,147	3.7	12.2	
Australia	92,274	86,688	5,150	10,920	102,758	44,567	3.2	11.4	
Fiji	103	77	12	12	101	34	0.0	-1.9	
New Zealand	14,045	14,011	935	1,550	16,496	6,546	0.5	17.5	
Other Asia & the Pacific	5,424	4,508	1,441	1,013	6,962	2,708	0.2	28.4	
Europe	482,099	492,695	20,519	25,024	538,238	230,827	16.8	11.6	
Northern Europe	136,415	134,179	6,263	2,492	142,934	55,073	4.5	4.8	
Denmark	8,548	8,551	280	165	8,996	3,625	0.3	5.2	
Finland	5,628	4,943	256	171	5,370	1,976	0.2	-4.6	
Iceland	316	467	23	9	499	186	0.0	57.9	
Ireland	7,766	7,621	332	119	8,072	3,303	0.3	3.9	
Norway	7,371	6,975	200	170	7,345	2,912	0.2	-0.4	
Sweden	12,754	12,806	467	314	13,587	5,228	0.4	6.5	
United Kingdom	94,032	92,816	4,705	1,544	99,065	37,843	3.1	5.4	
Western Europe	214,695	198,871	9,852	20,525	229,248	95,431	7.2	6.8	
Austria	6,652	6,717	180	327	7,224	2,909	0.2	8.6	
Belgium	12,433	11,794	588	661	13,043	5,111	0.4	4.9	
France	104,327	85,789	6,038	16,708	108,535	46,075	3.4	4.0	
Germany	56,415	59,991	1,667	1,503	63,161	25,721	2.0	12.0	
Luxembourg	442	390	7	12	409	148	0.0	-7.5	
Monaco	80	44	1	0	45	23	0.0	-43.8	
Netherlands	19,998	20,156	716	461	21,333	8,489	0.7	6.7	
Switzerland	14,348	13,990	655	853	15,498	6,955	0.5	8.0	
Eastern Europe	78,834	106,330	1,575	496	108,401	56,133	3.4	37.5	
Bulgaria	397	537	14	9	560	297	0.0	41.1	
Czech Republic	2,937	3,516	70	27	3,613	1,538	0.1	23.0	
Estonia	813	822	22	19	863	372	0.0	6.2	
Hungary	2,337	2,152	36	44	2,232	960	0.1	-4.5	
Lithuania	1,114	925	22	9	956	482	0.0	-14.2	
Poland	8,199	8,523	63	57	8,643	4,210	0.3	5.4	
Romania	930	1,049	53	13	1,115	585	0.0	19.9	
Russian Federation	57,567	83,277	1,078	234	84,589	44,964	2.6	46.9	
Slovakia	1,135	1,387	102	44	1,533	591	0.0	35.1	
Ukraine	3,405	4,142	115	40	4,297	2,134	0.1	26.2	

Source: Statistics and ICT Department, MOT

International Tourist Arrivals to Cambodia by Country of Residence in January - November 2012

(by all mean of transportations)

Regions Country of Residence	2011		2012			share		change	
			Purpose of Visit			Total	Female	(%)	(%)
			Holiday	Business	Other			2012*	2012*/11
GRAND TOTAL	2,583,518	2,931,923	153,431	116,627	3,201,981	1,452,794	100.0	23.9	
Southern Europe	47,388	49,838	1,308	682	51,828	21,807	1.6	9.4	
Croatia	449	587	17	9	613	285	0.0	36.5	
Greece	1,033	899	18	13	930	322	0.0	-10.0	
Italy	18,436	18,871	619	263	19,753	7,352	0.6	7.1	
Portugal	2,826	2,568	54	24	2,646	1,253	0.1	-6.4	
Serbia	364	326	23	12	361	151	0.0	-0.8	
Slovenia	712	761	27	4	792	322	0.0	11.2	
Spain	20,560	23,133	341	279	23,753	11,208	0.7	15.5	
Turkey	3,008	2,693	209	78	2,980	914	0.1	-0.9	
Other Europe	4,767	3,477	1,521	829	5,827	2,383	0.2	22.2	
Americas	194,558	171,568	10,781	34,956	217,305	92,888	6.8	11.7	
Argentina	4,924	4,087	33	93	4,213	2,012	0.1	-14.4	
Brazil	3,236	4,353	43	54	4,450	2,173	0.1	37.5	
Canada	38,058	36,239	1,904	4,500	42,643	18,572	1.3	12.0	
Chile	2,185	2,613	70	21	2,704	1,296	0.1	23.8	
Colombia	1,958	1,275	35	35	1,345	646	0.0	-31.3	
Costa Rica	186	214	8	8	230	117	0.0	23.7	
Ecuador	163	147	10	16	173	78	0.0	6.1	
Mexico	3,119	3,573	59	33	3,665	1,812	0.1	17.5	
Peru	449	489	22	8	519	228	0.0	15.6	
United States	137,493	116,153	8,076	29,654	153,883	64,502	4.8	11.9	
Uruguay	506	444	3	26	473	244	0.0	-6.5	
Other Americas	2,281	1,981	518	508	3,007	1,208	0.1	31.8	
Africa	5,273	3,920	603	257	4,780	1,768	0.1	-9.3	
Cameroon	370	184	5	21	210	41	0.0	-43.2	
Congo	155	46	4	9	59	14	0.0	-61.9	
Ghana	396	110	16	13	139	13	0.0	-64.9	
Kenya	251	164	23	35	222	91	0.0	-11.6	
Liberia	328	80	4	6	90	24	0.0	-72.6	
Nigeria	472	274	222	34	530	77	0.0	12.3	
Sudan	45	32	7	5	44	10	0.0	-2.2	
South Africa	2,670	2,613	210	39	2,862	1,288	0.1	7.2	
Uganda	289	51	10	12	73	30	0.0	-74.7	
Other Africa	297	366	102	83	551	180	0.0	85.5	
Middle East	8,014	9,035	397	201	9,633	3,149	0.3	20.2	
Egypt	170	152	20	20	192	42	0.0	12.9	
Iran	638	550	11	23	584	136	0.0	-8.5	
Iraq	87	69	5	6	80	16	0.0	-8.0	
Israel	5,932	6,776	246	56	7,078	2,707	0.2	19.3	
Kuwait	499	650	4	9	663	35	0.0	32.9	
Oman	101	123	5	11	139	18	0.0	37.6	
Palestine	30	37	4	3	44	6	0.0	46.7	
Qatar	61	60	3	3	66	26	0.0	8.2	
Saudi Arabia	67	60	8	7	75	10	0.0	11.9	
United Arab Emirates	149	206	10	8	224	20	0.0	50.3	
Yemen	83	132	6	10	148	24	0.0	78.3	
Other Middle East	197	220	75	45	340	109	0.0	72.6	

Remark:

- Cambodian outbound tourist departures: 726,217
 - International outbound tourist departures: 3,130,454

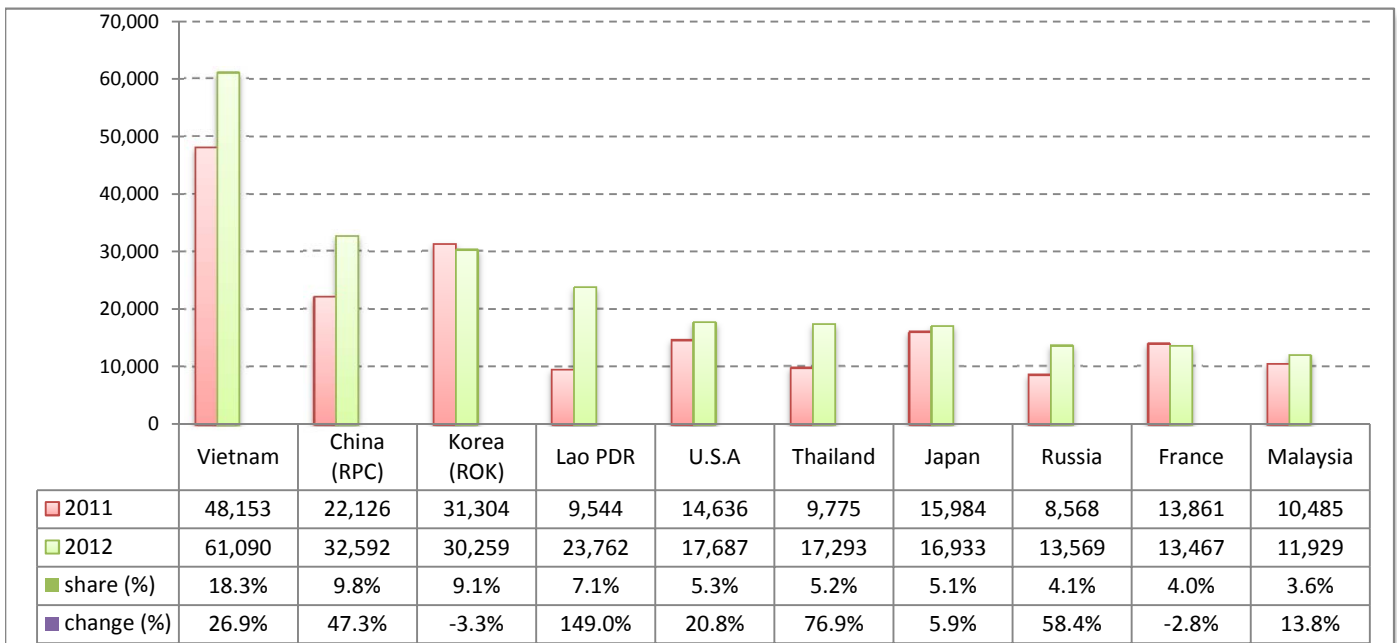
Executive Summary Report in November 2012

I. International tourist arrivals to Cambodia in November 2012 was: **333,482**

II. Mode of arrivals

	visitors	share (%)
Air	168,833	50.6
Phnom Penh Int'l Airport	70,588	21.2
Siem Reap Int'l Airport	98,245	29.5
Land and Water ways	164,649	49.4
Land	156,776	47.0
Waterway	7,873	2.4
Total	333,482	100.0

III. Top ten markets arrivals in November 2012



IV. International tourist arrivals to Cambodia in November 2012

	Inbound tourism		share (%)		change (%)
	2011	2012	2011	2012	2012*/11
Air	149,415	168,833	56.3	50.6	13.0
Phnom Penh Int'l Airport	61,005	70,588	23.0	21.2	15.7
Siem Reap Int'l Airport	88,410	98,245	33.3	29.5	11.1
Land and Water ways	116,124	164,649	43.7	49.4	41.8
Land	107,173	156,776	40.4	47.0	46.3
Waterway	8,951	7,873	3.4	2.4	-12.0
Total	265,539	333,482	100.0	100.0	25.6

V. Remark: Percentage share of international tourist arrivals at destinations in November 2012

	Arrivals		share (%)		change (%)
	2011	2012	2011	2012	2012*/11
Phnom Penh & Other Destinations	116,883	142,868	44.0	42.8	22.2
Siem Reap Province	148,656	190,614	56.0	57.2	28.2
Total	265,539	333,482	100.0	100.0	25.6

VI. Outbound tourists departures in November 2012

	Outbound tourism		change (%)
	2011	2012	2012*/11
Cambodian outbound tourists	66,045	69,977	6.0
International outbound tourists	254,434	315,143	23.9

International Tourist Arrivals to Cambodia by Country of Residence in November 2012

(by all mean of transportations)

Regions Country of Residence	2011	2012			Total	Female	share	change
		Purpose of Visit					(%)	(%)
		Holiday	Business	Other			2012*	2012*/11
GRAND TOTAL	265,539	306,241	14,267	12,974	333,482	155,219	100.0	25.6
Asia and the Pacific	181,641	219,923	11,206	5,624	236,753	111,894	71.0	30.3
ASEAN (South-East Asia)	91,067	125,898	2,905	2,792	131,595	64,685	39.5	44.5
Brunei Darussalam	57	107	1	41	149	51	0.0	161.4
Indonesia	1,247	1,782	280	130	2,192	721	0.7	75.8
Lao PDR	9,544	23,694	8	60	23,762	15,694	7.1	149.0
Malaysia	10,485	11,228	594	107	11,929	4,767	3.6	13.8
Myanmar	288	328	64	62	454	165	0.1	57.6
Philippines	6,432	7,992	542	89	8,623	5,193	2.6	34.1
Singapore	5,086	5,864	206	33	6,103	2,434	1.8	20.0
Thailand	9,775	15,616	656	1,021	17,293	7,663	5.2	76.9
Vietnam	48,153	59,287	554	1,249	61,090	27,997	18.3	26.9
North-East Asia	76,998	80,006	7,302	1,131	88,439	40,289	26.5	14.9
China (RPC)	22,126	28,228	4,069	295	32,592	14,793	9.8	47.3
Hong Kong SAR	201	916	20	3	939	496	0.3	367.2
Japan	15,984	15,721	935	277	16,933	7,185	5.1	5.9
Korea (ROK)	31,304	28,567	1,326	366	30,259	14,611	9.1	-3.3
Mongolia	20	21	4	1	26	15	0.0	30.0
Taiwan, China	7,363	6,553	948	189	7,690	3,189	2.3	4.4
Southern Asia	1,740	1,749	350	98	2,197	551	0.7	26.3
Afghanistan	9	7	1	2	10	2	0.0	11.1
Bangladesh	107	134	21	12	167	12	0.1	56.1
Bhutan	7	1	1	1	3	1	0.0	-57.1
India	1,258	1,407	246	66	1,719	462	0.5	36.6
Nepal	113	75	22	9	106	28	0.0	-6.2
Pakistan	144	57	40	4	101	27	0.0	-29.9
Sri Lanka	102	68	19	4	91	19	0.0	-10.8
Western Asia	114	227	19	0	246	115	0.1	115.8
Kazakhstan	85	188	12	0	200	92	0.1	135.3
Uzbekistan	29	39	7	0	46	23	0.0	58.6
Oceania	11,582	11,940	610	1,575	14,125	6,190	4.2	22.0
Australia	10,036	9,506	538	1,529	11,573	5,187	3.5	15.3
Fiji	12	10	0	1	11	7	0.0	-8.3
New Zealand	1,534	2,424	72	45	2,541	996	0.8	65.6
Other Asia & the Pacific	140	103	20	28	151	64	0.0	7.9
Europe	62,015	66,344	1,972	2,470	70,786	31,937	21.2	14.1
Northern Europe	15,111	15,966	593	242	16,801	6,884	5.0	11.2
Denmark	904	1,235	42	34	1,311	555	0.4	45.0
Finland	676	622	27	21	670	280	0.2	-0.9
Iceland	42	55	5	3	63	24	0.0	50.0
Ireland	796	816	20	9	845	351	0.3	6.2
Norway	841	795	21	17	833	326	0.2	-1.0
Sweden	1,608	1,758	49	39	1,846	793	0.6	14.8
United Kingdom	10,244	10,685	429	119	11,233	4,555	3.4	9.7
Western Europe	28,457	26,817	1,020	2,046	29,883	12,957	9.0	5.0
Austria	891	927	28	51	1,006	411	0.3	12.9
Belgium	1,720	1,603	63	35	1,701	666	0.5	-1.1
France	13,861	11,129	617	1,721	13,467	5,964	4.0	-2.8
Germany	7,927	8,776	178	103	9,057	3,996	2.7	14.3
Luxembourg	40	69	0	0	69	27	0.0	72.5
Monaco	10	3	1	0	4	1	0.0	-60.0
Netherlands	2,031	2,424	72	45	2,541	996	0.8	25.1
Switzerland	1,977	1,886	61	91	2,038	896	0.6	3.1
Central / Eastern Europe	12,294	17,720	207	110	18,037	9,509	5.4	46.7
Bulgaria	61	77	2	1	80	47	0.0	31.1
Czech Republic	554	604	13	2	619	276	0.2	11.7
Estonia	147	204	2	3	209	99	0.1	42.2
Hungary	319	309	2	4	315	136	0.1	-1.3
Lithuania	93	173	2	3	178	89	0.1	91.4
Poland	1,859	2,056	10	8	2,074	1,031	0.6	11.6
Romania	134	112	2	1	115	67	0.0	-14.2
Russian Federation	8,568	13,359	154	56	13,569	7,362	4.1	58.4
Slovakia	183	216	9	3	228	82	0.1	24.6
Ukraine	376	610	11	29	650	320	0.2	72.9

International Tourist Arrivals to Cambodia by Country of Residence in November 2012

(by all mean of transportations)

Regions Country of Residence	2011	2012			Total	Female	share	change
		Purpose of Visit					(%)	(%)
		Holiday	Business	Other			2012*	2012*/11
GRAND TOTAL	265,539	306,241	14,267	12,974	333,482	155,219	100.0	25.6
Southern Europe	6,046	5,747	140	57	5,944	2,549	1.8	-1.7
Croatia	75	95	1	4	100	36	0.0	33.3
Greece	57	67	1	2	70	18	0.0	22.8
Italy	2,375	2,259	70	24	2,353	938	0.7	-0.9
Portugal	372	371	1	1	373	197	0.1	0.3
Serbia	45	42	1	6	49	23	0.0	8.9
Slovenia	103	97	3	0	100	42	0.0	-2.9
Spain	2,261	2,547	38	12	2,597	1,191	0.8	14.9
Turkey	758	269	25	8	302	104	0.1	-60.2
Other Europe	107	94	12	15	121	38	0.0	13.1
Americas	20,757	18,876	999	4,818	24,693	10,984	7.4	19.0
Argentina	331	365	2	4	371	183	0.1	12.1
Brazil	380	493	4	9	506	262	0.2	33.2
Canada	4,578	4,214	221	704	5,139	2,334	1.5	12.3
Chile	169	177	5	2	184	94	0.1	8.9
Colombia	126	106	1	3	110	52	0.0	-12.7
Costa Rica	8	11	1	2	14	7	0.0	75.0
Ecuador	28	11	2	0	13	4	0.0	-53.6
Mexico	382	491	5	2	498	248	0.1	30.4
Peru	47	61	2	3	66	37	0.0	40.4
United States	14,636	12,870	746	4,071	17,687	7,722	5.3	20.8
Uruguay	7	24	1	3	28	12	0.0	300.0
Other Americas	65	53	9	15	77	29	0.0	18.5
Africa	429	320	57	33	410	149	0.1	-4.4
Cameroon	17	5	0	2	7	1	0.0	-58.8
Congo	12	2	1	2	5	1	0.0	-58.3
Ghana	11	3	1	5	9	1	0.0	-18.2
Kenya	18	16	1	1	18	5	0.0	0.0
Liberia	7	6	0	2	8	3	0.0	14.3
Nigeria	39	16	27	7	50	5	0.0	28.2
Sudan	13	2	0	1	3	1	0.0	-76.9
South Africa	287	251	23	4	278	122	0.1	-3.1
Uganda	11	7	1	2	10	3	0.0	-9.1
Other Africa	14	12	3	7	22	7	0.0	57.1
Middle East	697	778	33	29	840	255	0.3	20.5
Egypt	13	22	2	1	25	5	0.0	92.3
Iran	41	57	2	6	65	11	0.0	58.5
Iraq	12	3	0	1	4	1	0.0	-66.7
Israel	553	585	19	2	606	217	0.2	9.6
Kuwait	40	63	1	2	66	8	0.0	65.0
Oman	4	13	2	3	18	1	0.0	350.0
Palestine	2	2	1	1	4	1	0.0	100.0
Qatar	4	3	1	1	5	1	0.0	25.0
Saudi Arabia	6	3	1	2	6	1	0.0	0.0
United Arab Emirates	12	13	2	4	19	3	0.0	58.3
Yemen	3	7	1	3	11	2	0.0	266.7
Other Middle East	7	7	1	3	11	4	0.0	57.1

Remark:

- Cambodian outbound tourist departures: 69,977
- International outbound tourist departures: 315,143

COMPILED BY:

1. Mr. Kong Sopheareak

Director
Statistics & Tourism Information Department
Fax: +855 23 885003
E-mail: kong@mot.gov.kh

2. Mr. Horth Vanny

Chief of Tourism Statistics Office
Compile and data analysis
Tel.: +855 12 827664