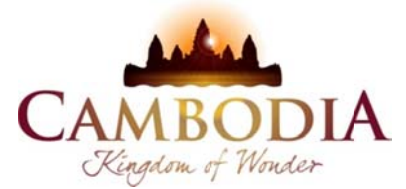




KINGDOM OF CAMBODIA
NATION RELIGION KING



TOURISM STATISTICS REPORT

October 2012

MINISTRY OF TOURISM

Statistics and Tourism Information Department

No. A3, Street 169, Sangkat Veal Vong, Khan 7 Makara, Phnom Penh, Cambodia.

Fax: +855 23 885003

E-mail: kong@mot.gov.kh

Web site: www.mot.gov.kh

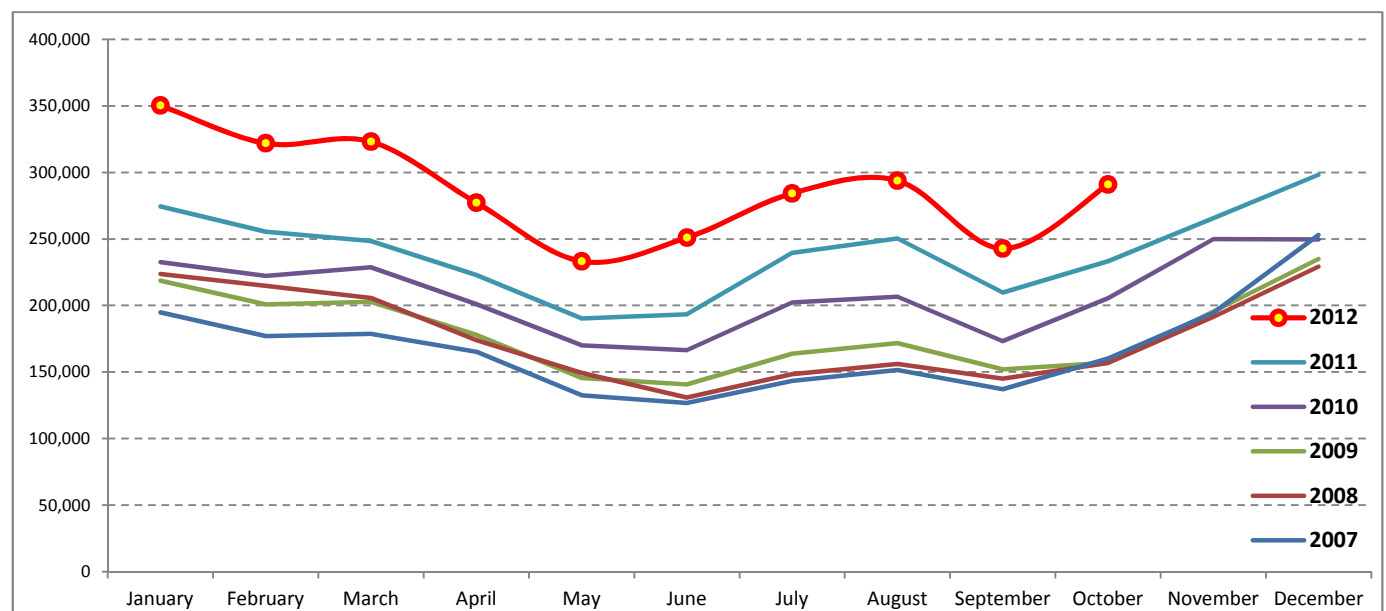
Tourism Highlights

International Tourist Arrivals, Average Length of Stay, Hotels Occupancy & Tourism Receipts 1993 - 2011

Years	Tourist Arrivals		Average Length	Hotels Occupancy	Tourism Receipts
	number	change (%)	of Stay (days)	(%)	(Million US\$)
1993	118,183	-	N/A	N/A	N/A
1994	176,617	49.4	N/A	N/A	N/A
1995	219,680	24.4	8.00	37.00	100
1996	260,489	18.6	7.50	40.00	118
1997	218,843	-16.0	6.40	30.00	103
1998	286,524	30.9	5.20	40.00	166
1999	367,743	28.3	5.50	44.00	190
2000	466,365	26.8	5.50	45.00	228
2001	604,919	29.7	5.50	48.00	304
2002	786,524	30.0	5.80	50.00	379
2003	701,014	-10.9	5.50	50.00	347
2004	1,055,202	50.5	6.30	52.00	578
2005	1,421,615	34.7	6.30	52.00	832
2006	1,700,041	19.6	6.50	54.79	1,049
2007	2,015,128	18.5	6.50	54.79	1,400
2008	2,125,465	5.5	6.65	62.68	1,595
2009	2,161,577	1.7	6.45	63.57	1,561
2010	2,508,289	16.0	6.45	65.74	1,786
2011	2,881,862	14.9	6.50	66.15	1,912

International tourist arrivals to Cambodia

Destination	Months	2007	2008	2009	2010	2011	2012	change (%) 2012*/11
Cambodia	Q1	550,813	644,205	622,288	683,692	778,467	995,210	27.8
<i>International tourist arrivals</i>	January	194,932	223,581	218,691	232,590	274,471	350,257	27.6
<i>by all means of</i>	February	177,130	214,902	200,789	222,354	255,499	321,870	26.0
<i>transportations</i>	March	178,751	205,722	202,808	228,748	248,497	323,083	30.0
	Q2	424,536	454,031	464,230	537,464	606,562	761,442	25.5
	April	165,347	173,903	177,955	200,965	223,032	277,304	24.3
	May	132,512	149,275	145,564	170,164	190,258	233,220	22.6
	June	126,677	130,853	140,711	166,335	193,272	250,918	29.8
	Q3	431,815	449,693	487,422	582,024	699,760	820,888	17.3
	July	143,310	148,449	163,817	202,349	239,527	284,282	18.7
	August	151,478	156,098	171,668	206,563	250,429	293,859	17.3
	September	137,027	145,146	151,937	173,112	209,804	242,747	15.7
	Q4	607,964	577,536	587,637	705,109	797,073	290,959	
	October	160,235	156,718	157,105	205,515	233,190	290,959	24.8
	November	194,646	191,549	195,570	249,892	265,539		
	December	253,083	229,269	234,962	249,702	298,344		
	Total	2,015,128	2,125,465	2,161,577	2,508,289	2,881,862	2,868,499	23.7



Source: Statistics and Tourism Information Department, MOT

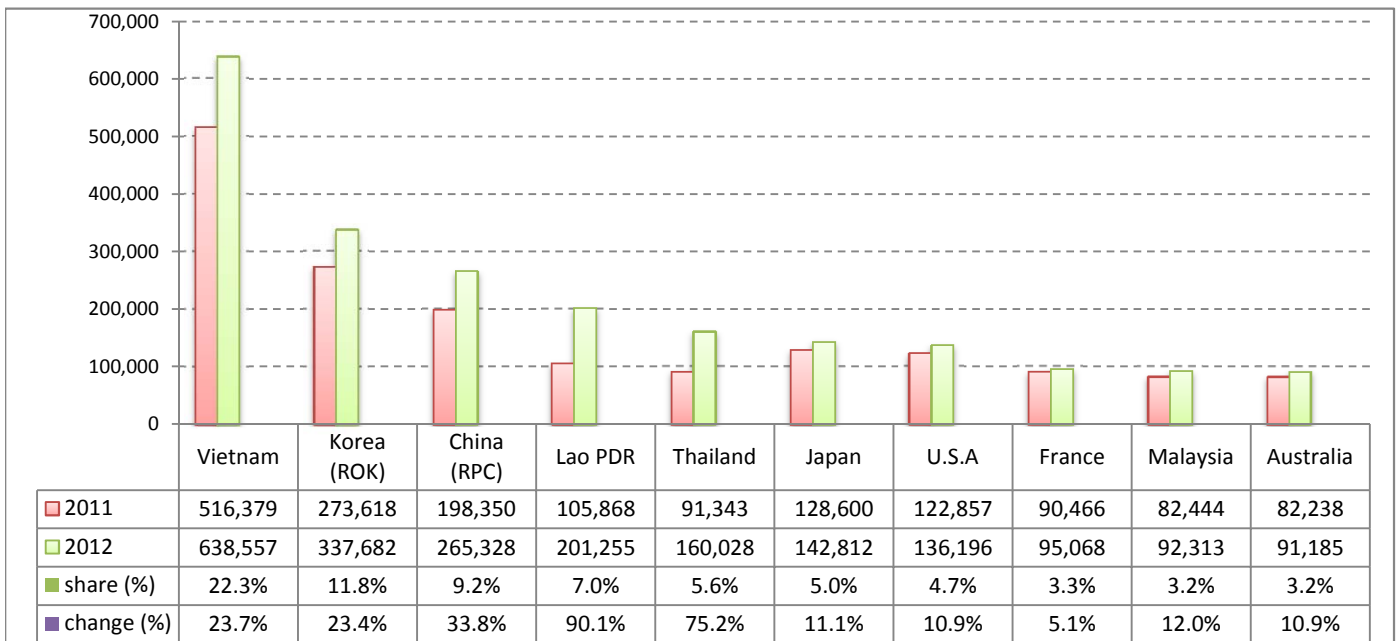
Executive Summary Report in the First Ten Months of 2012

I. International tourist arrivals to Cambodia in January - October was: **2,868,499**

II. Mode of arrivals

	visitors	share (%)
Air	1,362,328	47.5
Phnom Penh Int'l Airport	570,819	19.9
Siem Reap Int'l Airport	791,509	27.6
Land and Water ways	1,506,171	52.5
Land	1,445,971	50.4
Waterway	60,200	2.1
Total	2,868,499	100.0

III. Top ten markets arrivals in January - October 2012



IV. International tourist arrivals to Cambodia in January - October 2012

	Inbound tourism		share (%)		change (%)
	2011	2012	2011	2012	2012*/11
Air	1,168,482	1,362,328	50.4	47.5	16.6
Phnom Penh Int'l Airport	521,454	570,819	22.5	19.9	9.5
Siem Reap Int'l Airport	647,028	791,509	27.9	27.6	22.3
Land and Water ways	1,149,497	1,506,171	49.6	52.5	31.0
Land	1,083,628	1,445,971	46.7	50.4	33.4
Waterway	65,869	60,200	2.8	2.1	-8.6
Total	2,317,979	2,868,499	100.0	100.0	23.7

V. Remark: Percentage share of international tourist arrivals at destinations in January - October 2012

	Arrivals		share (%)		change (%)
	2011	2012	2011	2012	2012*/11
Phnom Penh & Other Destinations	1,028,425	1,222,219	44.4	42.6	18.8
Siem Reap Province	1,289,554	1,646,280	55.6	57.4	27.7
Total	2,317,979	2,868,499	100.0	100.0	23.7

VI. Outbound tourists departures in January - October 2012

	Outbound tourism		change (%)
	2011	2012	2012*/11
Cambodian outbound tourists	573,439	656,240	14.4
International outbound tourists	2,303,885	2,815,311	22.2

International Tourist Arrivals to Cambodia by Country of Residence in January - October 2012

(by all mean of transportations)

Regions Country of Residence	2011	2012			Total	Female	share	change
		Purpose of Visit					(%)	(%)
		Holiday	Business	Other			2012*	2012*/11
GRAND TOTAL	2,317,979	2,625,682	139,164	103,653	2,868,499	1,297,575	100.0	23.7
Asia and the Pacific	1,711,933	2,034,782	109,925	50,565	2,195,272	1,012,268	76.5	28.2
ASEAN	905,903	1,176,627	28,180	29,241	1,234,048	576,070	43.0	36.2
Brunei Darussalam	381	613	12	101	726	289	0.0	90.6
Indonesia	12,793	15,374	2,151	447	17,972	5,916	0.6	40.5
Lao PDR	105,868	200,607	93	555	201,255	135,708	7.0	90.1
Malaysia	82,444	86,063	5,551	699	92,313	31,764	3.2	12.0
Myanmar	3,435	2,889	498	217	3,604	1,464	0.1	4.9
Philippines	56,737	73,968	5,172	853	79,993	47,455	2.8	41.0
Singapore	36,523	37,550	1,749	301	39,600	13,679	1.4	8.4
Thailand	91,343	145,172	7,213	7,643	160,028	72,443	5.6	75.2
Vietnam	516,379	614,391	5,741	18,425	638,557	267,352	22.3	23.7
Eastern Asia	688,283	747,598	71,733	8,529	827,860	382,476	28.9	20.3
China (RPC)	198,350	221,530	41,317	2,481	265,328	121,273	9.2	33.8
Hong Kong SAR	4,616	5,807	243	49	6,099	2,912	0.2	32.1
Japan	128,600	133,236	7,311	2,265	142,812	62,164	5.0	11.1
Korea (ROK)	273,618	321,849	13,332	2,501	337,682	164,183	11.8	23.4
Mongolia	206	232	24	33	289	148	0.0	40.3
Taiwan, China	82,893	64,944	9,506	1,200	75,650	31,796	2.6	-8.7
Southern Asia	15,991	15,632	2,932	888	19,452	5,086	0.7	21.6
Afghanistan	102	85	12	23	120	16	0.0	17.6
Bangladesh	1,057	714	166	114	994	128	0.0	-6.0
Bhutan	72	89	5	26	120	22	0.0	66.7
India	12,086	12,428	2,007	480	14,915	4,210	0.5	23.4
Nepal	913	940	144	85	1,169	303	0.0	28.0
Pakistan	881	570	315	70	955	180	0.0	8.4
Srilanka	880	806	283	90	1,179	227	0.0	34.0
Western Asia	1,632	1,684	172	15	1,871	1,035	0.1	14.6
Kazakhstan	994	1,259	134	11	1,404	716	0.0	41.2
Uzbekistan	638	425	38	4	467	319	0.0	-26.8
Oceania	94,840	88,836	5,487	10,907	105,230	44,957	3.7	11.0
Australia	82,238	77,182	4,612	9,391	91,185	39,380	3.2	10.9
Fiji	91	67	12	11	90	27	0.0	-1.1
New Zealand	12,511	11,587	863	1,505	13,955	5,550	0.5	11.5
Other Asia & the Pacific	5,284	4,405	1,421	985	6,811	2,644	0.2	28.9
Europe	420,084	426,351	18,547	22,554	467,452	198,890	16.3	11.3
Northern Europe	121,304	118,213	5,670	2,250	126,133	48,189	4.4	4.0
Denmark	7,644	7,316	238	131	7,685	3,070	0.3	0.5
Finland	4,952	4,321	229	150	4,700	1,696	0.2	-5.1
Iceland	274	412	18	6	436	162	0.0	59.1
Ireland	6,970	6,805	312	110	7,227	2,952	0.3	3.7
Norway	6,530	6,180	179	153	6,512	2,586	0.2	-0.3
Sweden	11,146	11,048	418	275	11,741	4,435	0.4	5.3
United Kingdom	83,788	82,131	4,276	1,425	87,832	33,288	3.1	4.8
Western Europe	186,238	172,054	8,832	18,479	199,365	82,474	7.0	7.0
Austria	5,761	5,790	152	276	6,218	2,498	0.2	7.9
Belgium	10,713	10,191	525	626	11,342	4,445	0.4	5.9
France	90,466	74,660	5,421	14,987	95,068	40,111	3.3	5.1
Germany	48,488	51,215	1,489	1,400	54,104	21,725	1.9	11.6
Luxembourg	402	321	7	12	340	121	0.0	-15.4
Monaco	70	41	0	0	41	22	0.0	-41.4
Netherlands	17,967	17,732	644	416	18,792	7,493	0.7	4.6
Switzerland	12,371	12,104	594	762	13,460	6,059	0.5	8.8
Eastern Europe	66,540	88,610	1,368	386	90,364	46,624	3.2	35.8
Bulgaria	336	460	12	8	480	250	0.0	42.9
Czech Republic	2,383	2,912	57	25	2,994	1,262	0.1	25.6
Estonia	666	618	20	16	654	273	0.0	-1.8
Hungary	2,018	1,843	34	40	1,917	824	0.1	-5.0
Lithuania	1,021	752	20	6	778	393	0.0	-23.8
Poland	6,340	6,467	53	49	6,569	3,179	0.2	3.6
Romania	796	937	51	12	1,000	518	0.0	25.6
Russian Federation	48,999	69,918	924	178	71,020	37,602	2.5	44.9
Slovakia	952	1,171	93	41	1,305	509	0.0	37.1
Ukraine	3,029	3,532	104	11	3,647	1,814	0.1	20.4

International Tourist Arrivals to Cambodia by Country of Residence in January - October 2012

(by all mean of transportations)

Regions Country of Residence	2011		2012			share		change	
			Purpose of Visit			Total	Female	(%)	(%)
			Holiday	Business	Other			2012*	2012*/11
GRAND TOTAL	2,317,979	2,625,682	139,164	103,653	2,868,499	1,297,575	100.0	23.7	
Southern Europe	41,342	44,091	1,168	625	45,884	19,258	1.6	11.0	
Croatia	374	492	16	5	513	249	0.0	37.2	
Greece	976	832	17	11	860	304	0.0	-11.9	
Italy	16,061	16,612	549	239	17,400	6,414	0.6	8.3	
Portugal	2,454	2,197	53	23	2,273	1,056	0.1	-7.4	
Serbia	319	284	22	6	312	128	0.0	-2.2	
Slovenia	609	664	24	4	692	280	0.0	13.6	
Spain	18,299	20,586	303	267	21,156	10,017	0.7	15.6	
Turkey	2,250	2,424	184	70	2,678	810	0.1	19.0	
Other Europe	4,660	3,383	1,509	814	5,706	2,345	0.2	22.4	
Americas	173,801	152,692	9,782	30,138	192,612	81,904	6.7	10.8	
Argentina	4,593	3,722	31	89	3,842	1,829	0.1	-16.4	
Brazil	2,856	3,860	39	45	3,944	1,911	0.1	38.1	
Canada	33,480	32,025	1,683	3,796	37,504	16,238	1.3	12.0	
Chile	2,016	2,436	65	19	2,520	1,202	0.1	25.0	
Colombia	1,832	1,169	34	32	1,235	594	0.0	-32.6	
Costa Rica	178	203	7	6	216	110	0.0	21.3	
Ecuador	135	136	8	16	160	74	0.0	18.5	
Mexico	2,737	3,082	54	31	3,167	1,564	0.1	15.7	
Peru	402	428	20	5	453	191	0.0	12.7	
United States	122,857	103,283	7,330	25,583	136,196	56,780	4.7	10.9	
Uruguay	499	420	2	23	445	232	0.0	-10.8	
Other Americas	2,216	1,928	509	493	2,930	1,179	0.1	32.2	
Africa	4,844	3,600	546	224	4,370	1,619	0.2	-9.8	
Cameroon	353	179	5	19	203	40	0.0	-42.5	
Congo	143	44	3	7	54	13	0.0	-62.2	
Ghana	385	107	15	8	130	12	0.0	-66.2	
Kenya	233	148	22	34	204	86	0.0	-12.4	
Liberia	321	74	4	4	82	21	0.0	-74.5	
Nigeria	433	258	195	27	480	72	0.0	10.9	
Sudan	32	30	7	4	41	9	0.0	28.1	
South Africa	2,383	2,362	187	35	2,584	1,166	0.1	8.4	
Uganda	278	44	9	10	63	27	0.0	-77.3	
Other Africa	283	354	99	76	529	173	0.0	86.9	
Middle East	7,317	8,257	364	172	8,793	2,894	0.3	20.2	
Egypt	157	130	18	19	167	37	0.0	6.4	
Iran	597	493	9	17	519	125	0.0	-13.1	
Iraq	75	66	5	5	76	15	0.0	1.3	
Israel	5,379	6,191	227	54	6,472	2,490	0.2	20.3	
Kuwait	459	587	3	7	597	27	0.0	30.1	
Oman	97	110	3	8	121	17	0.0	24.7	
Palestine	28	35	3	2	40	5	0.0	42.9	
Qatar	57	57	2	2	61	25	0.0	7.0	
Saudi Arabia	61	57	7	5	69	9	0.0	13.1	
United Arab Emirates	137	193	8	4	205	17	0.0	49.6	
Yemen	80	125	5	7	137	22	0.0	71.3	
Other Middle East	190	213	74	42	329	105	0.0	73.2	

Remark:

- Cambodian outbound tourist departures: 656,240
 - International outbound tourist departures: 2,815,311

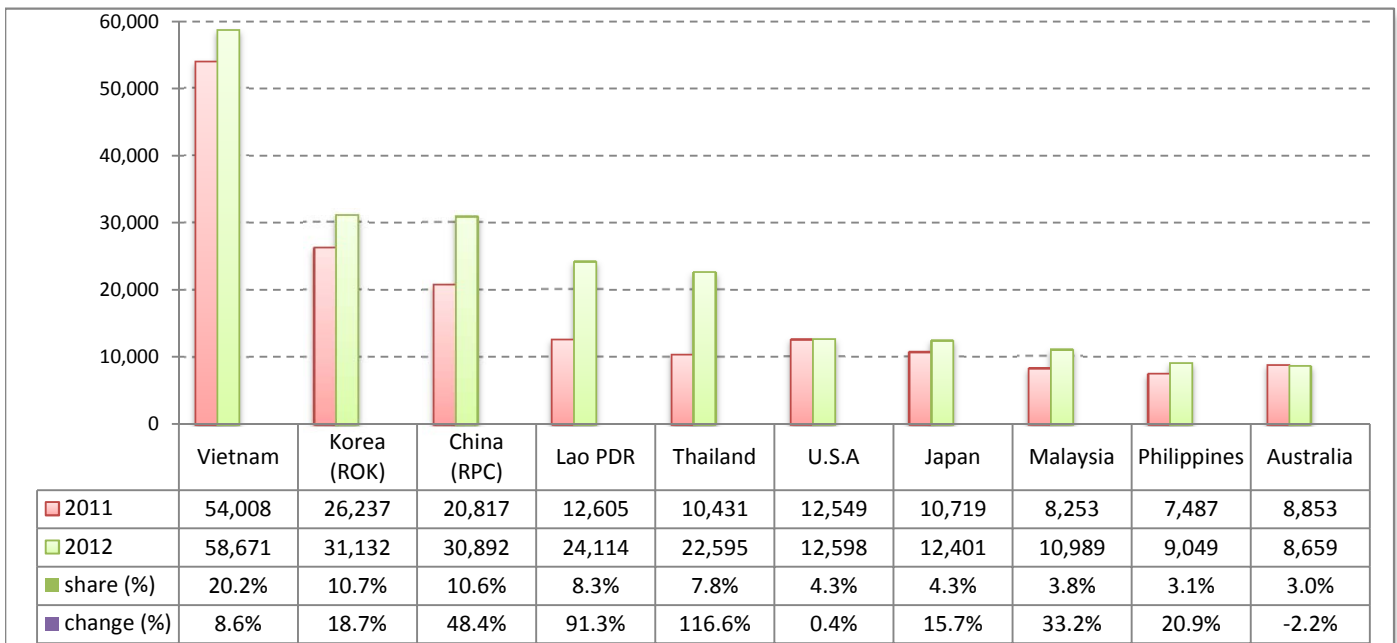
Executive Summary Report in October 2012

I. International tourist arrivals to Cambodia in October 2012 was: **290,959**

II. Mode of arrivals

	visitors	share (%)
Air	140,908	48.4
Phnom Penh Int'l Airport	60,437	20.8
Siem Reap Int'l Airport	80,471	27.7
Land and Water ways	150,051	51.6
Land	146,167	50.2
Waterway	3,884	1.3
Total	290,959	100.0

III. Top ten markets arrivals in October 2012



IV. International tourist arrivals to Cambodia in October 2012

	Inbound tourism		share (%)		change (%)
	2011	2012	2011	2012	2012*/11
Air	118,822	140,908	51.0	48.4	18.6
Phnom Penh Int'l Airport	53,459	60,437	22.9	20.8	13.1
Siem Reap Int'l Airport	65,363	80,471	28.0	27.7	23.1
Land and Water ways	114,368	150,051	49.0	51.6	31.2
Land	108,501	146,167	46.5	50.2	34.7
Waterway	5,867	3,884	2.5	1.3	-33.8
Total	233,190	290,959	100.0	100.0	24.8

V. Remark: Percentage share of international tourist arrivals at destinations in October 2012

	Arrivals		share (%)		change (%)
	2011	2012	2011	2012	2012*/11
Phnom Penh & Other Destinations	110,740	131,892	47.5	45.3	19.1
Siem Reap Province	122,450	159,067	52.5	54.7	29.9
Total	233,190	290,959	100.0	100.0	24.8

VI. Outbound tourists departures in October 2012

	Outbound tourism		change (%)
	2011	2012	2012*/11
Cambodian outbound tourists	64,256	70,435	9.6
International outbound tourists	220,797	278,170	26.0

International Tourist Arrivals to Cambodia by Country of Residence in October 2012

(by all mean of transportations)

Regions Country of Residence	2011	2012			Total	Female	share	change
		Purpose of Visit					(%)	(%)
		Holiday	Business	Other			2012*	2012*/11
GRAND TOTAL	233,190	262,636	18,233	10,090	290,959	134,202	100.0	24.8
Asia and the Pacific	176,630	210,534	14,557	4,739	229,830	108,265	79.0	30.1
ASEAN (South-East Asia)	98,108	126,300	3,533	2,057	131,890	64,680	45.3	34.4
Brunei Darussalam	25	42	0	3	45	19	0.0	80.0
Indonesia	1,399	1,567	257	56	1,880	602	0.6	34.4
Lao PDR	12,605	24,074	11	29	24,114	15,835	8.3	91.3
Malaysia	8,253	10,085	797	107	10,989	3,711	3.8	33.2
Myanmar	404	177	49	20	246	89	0.1	-39.1
Philippines	7,487	8,354	622	73	9,049	5,143	3.1	20.9
Singapore	3,496	4,003	264	34	4,301	1,411	1.5	23.0
Thailand	10,431	21,009	854	732	22,595	10,862	7.8	116.6
Vietnam	54,008	56,989	679	1,003	58,671	27,008	20.2	8.6
North-East Asia	66,385	72,967	9,438	975	83,380	37,785	28.7	25.6
China (RPC)	20,817	25,233	5,319	340	30,892	14,322	10.6	48.4
Hong Kong SAR	593	651	34	3	688	335	0.2	16.0
Japan	10,719	11,227	904	270	12,401	5,235	4.3	15.7
Korea (ROK)	26,237	29,039	1,828	265	31,132	14,449	10.7	18.7
Mongolia	19	16	5	1	22	12	0.0	15.8
Taiwan, China	8,000	6,801	1,348	96	8,245	3,432	2.8	3.1
Southern Asia	1,737	1,687	337	88	2,112	534	0.7	21.6
Afghanistan	3	7	2	1	10	2	0.0	233.3
Bangladesh	92	78	6	12	96	16	0.0	4.3
Bhutan	6	4	1	0	5	2	0.0	-16.7
India	1,350	1,398	229	49	1,676	455	0.6	24.1
Nepal	124	88	21	14	123	22	0.0	-0.8
Pakistan	90	34	34	8	76	22	0.0	-15.6
Sri Lanka	72	78	44	4	126	15	0.0	75.0
Western Asia	121	119	24	0	143	76	0.0	18.2
Kazakhstan	75	87	19	0	106	50	0.0	41.3
Uzbekistan	46	32	5	0	37	26	0.0	-19.6
Oceania	10,141	8,110	651	1,273	10,034	4,252	3.4	-1.1
Australia	8,853	7,060	530	1,069	8,659	3,694	3.0	-2.2
Fiji	6	6	2	7	15	6	0.0	150.0
New Zealand	1,282	1,044	119	197	1,360	552	0.5	6.1
Other Asia & the Pacific	138	1,351	574	346	2,271	938	0.8	1545.7
Europe	38,207	37,553	2,466	2,057	42,076	18,030	14.5	10.1
Northern Europe	10,852	10,453	651	231	11,335	4,370	3.9	4.5
Denmark	638	594	27	11	632	251	0.2	-0.9
Finland	315	287	22	6	315	104	0.1	0.0
Iceland	17	19	1	0	20	9	0.0	17.6
Ireland	702	718	25	10	753	337	0.3	7.3
Norway	483	449	18	17	484	186	0.2	0.2
Sweden	917	794	62	51	907	368	0.3	-1.1
United Kingdom	7,780	7,592	496	136	8,224	3,115	2.8	5.7
Western Europe	16,527	13,689	1,082	1,564	16,335	6,659	5.6	-1.2
Austria	455	399	18	21	438	177	0.2	-3.7
Belgium	925	731	65	37	833	308	0.3	-9.9
France	8,019	5,814	683	1,259	7,756	3,173	2.7	-3.3
Germany	4,415	4,400	177	141	4,718	1,934	1.6	6.9
Luxembourg	37	34	0	0	34	13	0.0	-8.1
Monaco	12	5	0	0	5	3	0.0	-58.3
Netherlands	1,687	1,486	82	40	1,608	659	0.6	-4.7
Switzerland	977	820	57	66	943	392	0.3	-3.5
Central / Eastern Europe	6,404	8,461	161	35	8,657	4,584	3.0	35.2
Bulgaria	59	59	1	0	60	33	0.0	1.7
Czech Republic	168	206	1	4	211	81	0.1	25.6
Estonia	41	72	3	2	77	24	0.0	87.8
Hungary	146	209	0	7	216	93	0.1	47.9
Lithuania	49	66	0	0	66	29	0.0	34.7
Poland	691	516	6	5	527	253	0.2	-23.7
Romania	109	122	8	1	131	62	0.0	20.2
Russian Federation	4,805	6,717	118	12	6,847	3,763	2.4	42.5
Slovakia	85	94	13	4	111	46	0.0	30.6
Ukraine	251	400	11	0	411	200	0.1	63.7

Source: Statistics and ICT Department, MOT

International Tourist Arrivals to Cambodia by Country of Residence in October 2012

(by all mean of transportations)

Regions Country of Residence	2011	2012			Total	Female	share	change
		Purpose of Visit					(%)	(%)
		Holiday	Business	Other			2012*	2012*/11
GRAND TOTAL	233,190	262,636	18,233	10,090	290,959	134,202	100.0	24.8
Southern Europe	4,321	4,211	120	60	4,391	1,869	1.5	1.6
Croatia	53	25	1	0	26	10	0.0	-50.9
Greece	106	58	1	1	60	19	0.0	-43.4
Italy	1,040	1,176	60	28	1,264	436	0.4	21.5
Portugal	314	205	5	1	211	130	0.1	-32.8
Serbia	33	52	4	2	58	24	0.0	75.8
Slovenia	83	39	5	2	46	17	0.0	-44.6
Spain	2,565	2,030	32	25	2,087	960	0.7	-18.6
Turkey	127	626	12	1	639	273	0.2	403.1
Other Europe	103	739	452	167	1,358	548	0.5	1218.4
Americas	17,013	13,326	1,089	3,232	17,647	7,505	6.1	3.7
Argentina	194	308	4	3	315	149	0.1	62.4
Brazil	368	419	4	2	425	219	0.1	15.5
Canada	3,147	2,489	199	418	3,106	1,348	1.1	-1.3
Chile	162	234	9	4	247	96	0.1	52.5
Colombia	97	129	4	0	133	66	0.0	37.1
Costa Rica	11	17	1	0	18	9	0.0	63.6
Ecuador	14	15	1	2	18	8	0.0	28.6
Mexico	342	352	4	2	358	186	0.1	4.7
Peru	43	49	6	0	55	21	0.0	27.9
United States	12,549	9,103	773	2,722	12,598	5,263	4.3	0.4
Uruguay	5	6	1	3	10	3	0.0	100.0
Other Americas	81	205	83	76	364	137	0.1	349.4
Africa	415	464	65	29	558	150	0.2	34.5
Cameroon	18	42	1	2	45	5	0.0	150.0
Congo	13	5	1	1	7	1	0.0	-46.2
Ghana	28	4	4	2	10	1	0.0	-64.3
Kenya	29	15	4	3	22	7	0.0	-24.1
Liberia	5	3	1	2	6	1	0.0	20.0
Nigeria	37	28	15	3	46	7	0.0	24.3
Sudan	4	2	2	1	5	1	0.0	25.0
South Africa	259	281	21	3	305	102	0.1	17.8
Uganda	3	2	2	1	5	1	0.0	66.7
Other Africa	19	82	14	11	107	24	0.0	463.2
Middle East	925	759	56	33	848	252	0.3	-8.3
Egypt	23	14	4	2	20	1	0.0	-13.0
Iran	60	29	2	2	33	4	0.0	-45.0
Iraq	2	3	1	1	5	1	0.0	150.0
Israel	758	576	29	16	621	223	0.2	-18.1
Kuwait	38	73	2	2	77	4	0.0	102.6
Oman	8	9	2	1	12	1	0.0	50.0
Palestine	4	4	1	1	6	1	0.0	50.0
Qatar	3	1	1	1	3	1	0.0	0.0
Saudi Arabia	11	4	2	1	7	1	0.0	-36.4
United Arab Emirates	3	18	3	2	23	3	0.0	666.7
Yemen	3	7	1	1	9	1	0.0	200.0
Other Middle East	12	21	8	3	32	11	0.0	166.7

Remark:

- Cambodian outbound tourist departures: 70,435
- International outbound tourist departures: 278,170

COMPILED BY:

1. Mr. Kong Sopheareak

Director
Statistics & Tourism Information Department
Fax: +855 23 885003
E-mail: kong@mot.gov.kh

2. Mr. Horth Vanny

Chief of Tourism Statistics Office
Compile and data analysis
Tel.: +855 12 827664