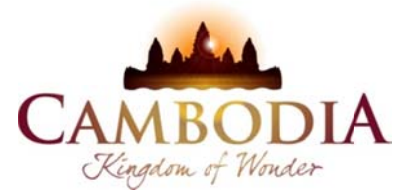




KINGDOM OF CAMBODIA
NATION RELIGION KING



TOURISM STATISTICS REPORT

May 2012

MINISTRY OF TOURISM

Statistics and Tourism Information Department

No. A3, Street 169, Sangkat Veal Vong, Khan 7 Makara, Phnom Penh, Cambodia.

Fax: +855 23 885003

E-mail: kong@mot.gov.kh

Web site: www.mot.gov.kh

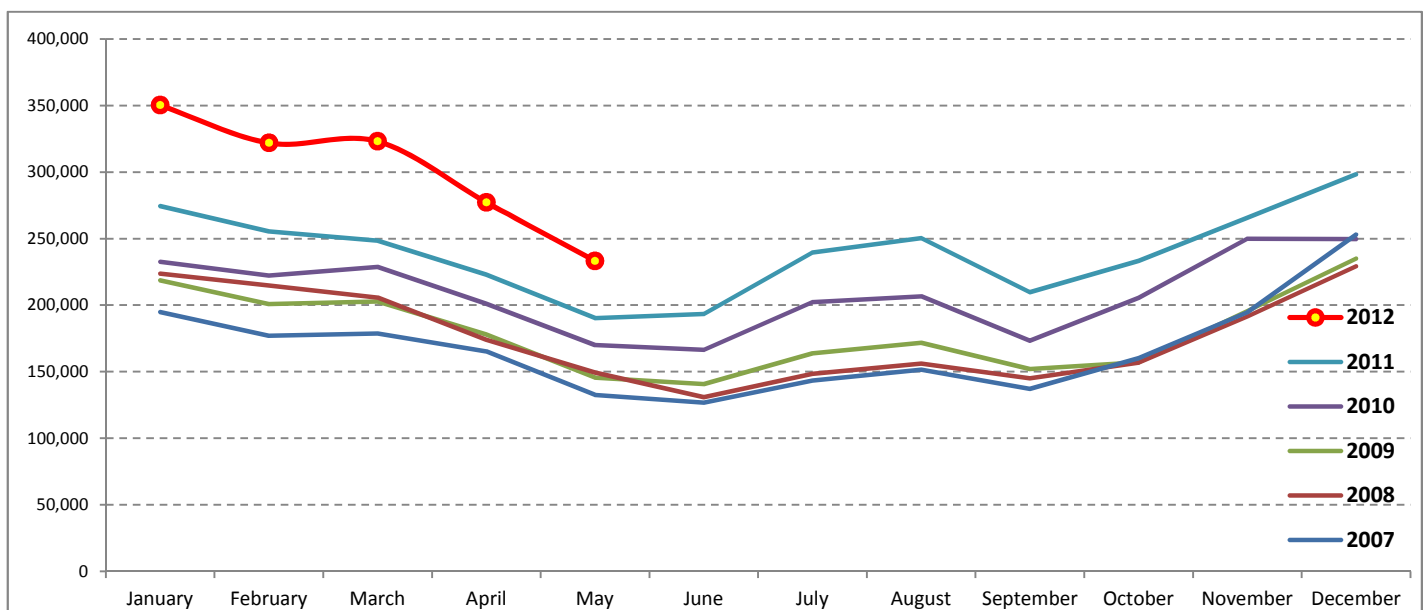
Tourism Highlights

International Tourist Arrivals, Average Length of Stay, Hotels Occupancy & Tourism Receipts 1993 - 2011

Years	Tourist Arrivals		Average Length	Hotels Occupancy	Tourism Receipts
	number	change (%)	of Stay (days)	(%)	(Million US\$)
1993	118,183	-	N/A	N/A	N/A
1994	176,617	49.4	N/A	N/A	N/A
1995	219,680	24.4	8.00	37.00	100
1996	260,489	18.6	7.50	40.00	118
1997	218,843	-16.0	6.40	30.00	103
1998	286,524	30.9	5.20	40.00	166
1999	367,743	28.3	5.50	44.00	190
2000	466,365	26.8	5.50	45.00	228
2001	604,919	29.7	5.50	48.00	304
2002	786,524	30.0	5.80	50.00	379
2003	701,014	-10.9	5.50	50.00	347
2004	1,055,202	50.5	6.30	52.00	578
2005	1,421,615	34.7	6.30	52.00	832
2006	1,700,041	19.6	6.50	54.79	1,049
2007	2,015,128	18.5	6.50	54.79	1,400
2008	2,125,465	5.5	6.65	62.68	1,595
2009	2,161,577	1.7	6.45	63.57	1,561
2010	2,508,289	16.0	6.45	65.74	1,786
2011	2,881,862	14.9	6.50	66.15	1,912

International tourist arrivals to Cambodia

Destination	Months	2007	2008	2009	2010	2011	2012	change (%) 2012*/11
Cambodia	Q1	550,813	644,205	622,288	683,692	778,467	995,210	27.8
<i>International tourist arrivals by all means of transportations</i>	January	194,932	223,581	218,691	232,590	274,471	350,257	27.6
	February	177,130	214,902	200,789	222,354	255,499	321,870	26.0
	March	178,751	205,722	202,808	228,748	248,497	323,083	30.0
	Q2	424,536	454,031	464,230	537,464	606,562	510,524	
	April	165,347	173,903	177,955	200,965	223,032	277,304	24.3
	May	132,512	149,275	145,564	170,164	190,258	233,220	22.6
	June	126,677	130,853	140,711	166,335	193,272		
	Q3	431,815	449,693	487,422	582,024	699,760	0	
	July	143,310	148,449	163,817	202,349	239,527		
	August	151,478	156,098	171,668	206,563	250,429		
	September	137,027	145,146	151,937	173,112	209,804		
	Q4	607,964	577,536	587,637	705,109	797,073	0	
	October	160,235	156,718	157,105	205,515	233,190		
	November	194,646	191,549	195,570	249,892	265,539		
	December	253,083	229,269	234,962	249,702	298,344		
	Total	2,015,128	2,125,465	2,161,577	2,508,289	2,881,862	1,505,734	26.3



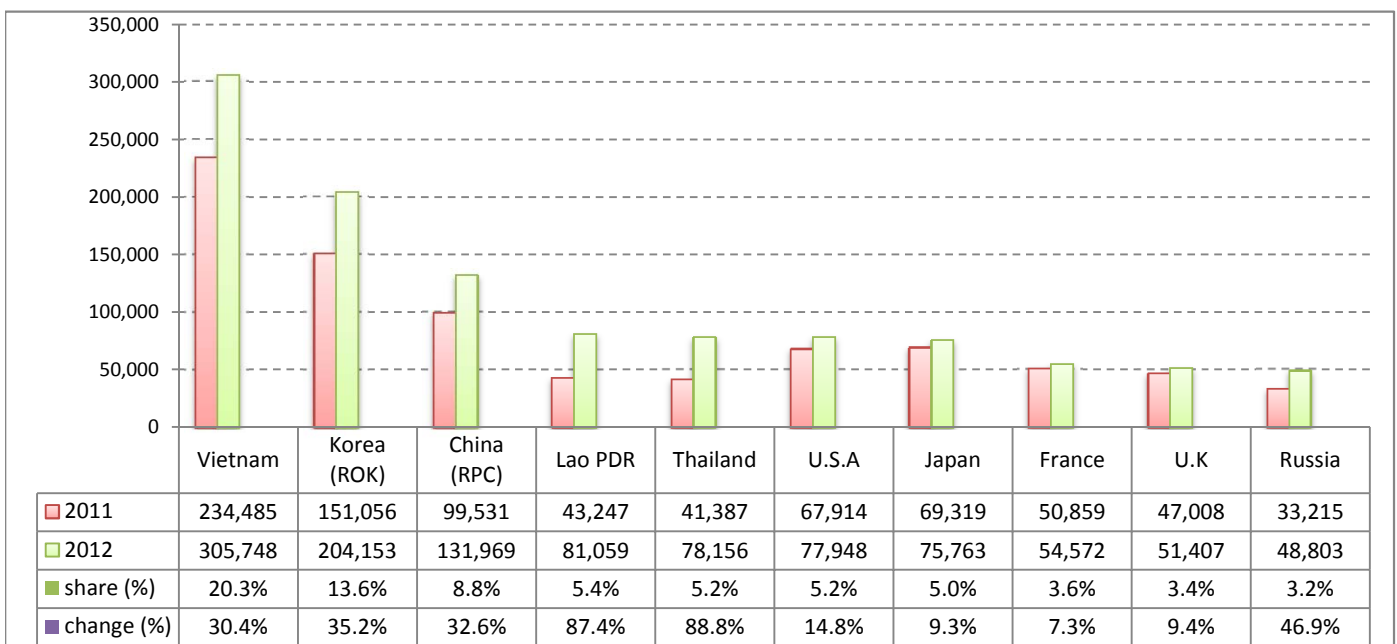
Executive Summary Report in the First Five Months of 2012

I. International tourist arrivals to Cambodia in January - May 2012 was: **1,505,734**

II. Mode of arrivals

	visitors	share (%)
Air	744,436	49.4
Phnom Penh Int'l Airport	288,927	19.2
Siem Reap Int'l Airport	455,509	30.3
Land and Water ways	761,298	50.6
Land	719,382	47.8
Waterway	41,916	2.8
Total	1,505,734	100.0

III. Top ten markets arrivals in January - May 2012



IV. International tourist arrivals to Cambodia in January - May 2012

	Inbound tourism		share (%)		change (%)
	2011	2012	2011	2012	2012*/11
Air	624,363	744,436	52.4	49.4	19.2
Phnom Penh Int'l Airport	264,910	288,927	22.2	19.2	9.1
Siem Reap Int'l Airport	359,453	455,509	30.2	30.3	26.7
Land and Water ways	567,394	761,298	47.6	50.6	34.2
Land	530,147	719,382	44.5	47.8	35.7
Waterway	37,247	41,916	3.1	2.8	12.5
Total	1,191,757	1,505,734	100.0	100.0	26.3

V. Remark: Percentage share of international tourist arrivals at destinations in January - May 2012

	Arrivals		share (%)		change (%)
	2011	2012	2011	2012	2012*/11
Phnom Penh & Other Destinations	510,679	564,283	42.9	37.5	10.5
Siem Reap Province	681,078	941,451	57.1	62.5	38.2
Total	1,191,757	1,505,734	100.0	100.0	26.3

VI. Outbound tourists departures in January - May 2012

	Outbound tourism		change (%)
	2011	2012	2012*/11
Cambodian outbound tourists	242,362	322,877	33.2
International outbound tourists	1,190,158	1,508,287	26.7

International Tourist Arrivals to Cambodia by Country of Residence in January - May 2012

(by all mean of transportations)

Regions Country of Residence	2011		2012			share		change	
			Purpose of Visit			Total	Female	(%)	(%)
			Holiday	Business	Other			2012*	2012*/11
GRAND TOTAL	1,191,757	1,386,964	66,064	52,706	1,505,734	691,746	100.0	26.3	
Asia and the Pacific	837,223	1,022,366	52,064	28,700	1,103,130	518,458	73.3	31.8	
ASEAN	409,622	547,291	13,939	18,118	579,348	274,929	38.5	41.4	
Brunei Darussalam	180	294	5	81	380	151	0.0	111.1	
Indonesia	6,125	6,671	906	198	7,775	2,598	0.5	26.9	
Lao PDR	43,247	80,785	30	244	81,059	55,903	5.4	87.4	
Malaysia	39,125	41,023	2,723	309	44,055	15,591	2.9	12.6	
Myanmar	2,021	1,801	273	89	2,163	947	0.1	7.0	
Philippines	26,069	37,536	2,726	478	40,740	24,534	2.7	56.3	
Singapore	16,983	18,328	810	134	19,272	6,814	1.3	13.5	
Thailand	41,387	70,714	3,655	3,787	78,156	37,460	5.2	88.8	
Vietnam	234,485	290,139	2,811	12,798	305,748	130,931	20.3	30.4	
Eastern Asia	365,484	416,244	33,764	4,391	454,399	215,029	30.2	24.3	
China (RPC)	99,531	110,664	20,060	1,245	131,969	60,360	8.8	32.6	
Hong Kong SAR	2,247	3,331	97	21	3,449	1,697	0.2	53.5	
Japan	69,319	71,556	3,114	1,093	75,763	33,549	5.0	9.3	
Korea (ROK)	151,056	196,885	5,992	1,276	204,153	102,292	13.6	35.2	
Mongolia	120	141	9	20	170	88	0.0	41.7	
Taiwan, China	43,211	33,667	4,492	736	38,895	17,043	2.6	-10.0	
Southern Asia	7,941	8,046	1,238	411	9,695	2,688	0.6	22.1	
Afghanistan	72	45	4	15	64	9	0.0	-11.1	
Bangladesh	524	331	81	49	461	63	0.0	-12.0	
Bhutan	36	57	0	11	68	9	0.0	88.9	
India	5,997	6,338	813	233	7,384	2,226	0.5	23.1	
Nepal	448	538	63	46	647	173	0.0	44.4	
Pakistan	456	357	152	33	542	90	0.0	18.9	
Sri Lanka	408	380	125	24	529	118	0.0	29.7	
Western Asia	1,021	1,102	71	5	1,178	648	0.1	15.4	
Kazakhstan	706	863	51	4	918	473	0.1	30.0	
Uzbekistan	315	239	20	1	260	175	0.0	-17.5	
Oceania	48,977	47,871	2,614	5,447	55,932	24,249	3.7	14.2	
Australia	42,573	41,647	2,179	4,741	48,567	21,271	3.2	14.1	
Fiji	62	32	6	2	40	9	0.0	-35.5	
New Zealand	6,342	6,192	429	704	7,325	2,969	0.5	15.5	
Other Asia & the Pacific	4,178	1,812	438	328	2,578	915	0.2	-38.3	
Europe	249,283	264,145	8,800	8,897	281,842	121,331	18.7	13.1	
Northern Europe	71,194	72,622	2,795	1,071	76,488	29,393	5.1	7.4	
Denmark	4,751	4,699	131	61	4,891	1,979	0.3	2.9	
Finland	3,578	3,076	115	90	3,281	1,199	0.2	-8.3	
Iceland	179	199	3	1	203	75	0.0	13.4	
Ireland	3,160	3,276	168	67	3,511	1,308	0.2	11.1	
Norway	4,398	4,227	98	49	4,374	1,789	0.3	-0.5	
Sweden	8,120	8,494	213	114	8,821	3,415	0.6	8.6	
United Kingdom	47,008	48,651	2,067	689	51,407	19,628	3.4	9.4	
Western Europe	110,858	108,249	4,283	7,036	119,568	50,376	7.9	7.9	
Austria	3,770	4,023	88	124	4,235	1,678	0.3	12.3	
Belgium	5,824	5,773	248	228	6,249	2,473	0.4	7.3	
France	50,859	46,355	2,593	5,624	54,572	23,442	3.6	7.3	
Germany	32,341	34,068	733	551	35,352	14,380	2.3	9.3	
Luxembourg	243	190	4	5	199	83	0.0	-18.1	
Monaco	25	21	0	0	21	12	0.0	-16.0	
Netherlands	9,556	9,643	312	179	10,134	4,077	0.7	6.0	
Switzerland	8,240	8,176	305	325	8,806	4,231	0.6	6.9	
Eastern Europe	45,317	61,205	659	159	62,023	31,847	4.1	36.9	
Bulgaria	209	302	6	0	308	171	0.0	47.4	
Czech Republic	1,709	2,173	35	13	2,221	929	0.1	30.0	
Estonia	548	446	8	5	459	205	0.0	-16.2	
Hungary	1,538	1,308	21	9	1,338	566	0.1	-13.0	
Lithuania	897	538	11	1	550	300	0.0	-38.7	
Poland	4,176	4,515	26	26	4,567	2,231	0.3	9.4	
Romania	463	522	21	5	548	301	0.0	18.4	
Russian Federation	33,215	48,277	447	79	48,803	25,602	3.2	46.9	
Slovakia	643	768	39	16	823	326	0.1	28.0	
Ukraine	1,919	2,356	45	5	2,406	1,216	0.2	25.4	

International Tourist Arrivals to Cambodia by Country of Residence in January - May 2012

(by all mean of transportations)

Regions Country of Residence	2011		2012			share		change	
			Purpose of Visit			Total	Female	(%)	(%)
			Holiday	Business	Other			2012*	2012*/11
GRAND TOTAL	1,191,757	1,386,964	66,064	52,706	1,505,734	691,746	100.0	26.3	
Southern Europe	18,087	20,454	567	358	21,379	8,712	1.4	18.2	
Croatia	229	301	8	1	310	156	0.0	35.4	
Greece	581	431	6	9	446	145	0.0	-23.2	
Italy	9,107	9,079	274	125	9,478	3,507	0.6	4.1	
Portugal	1,130	1,071	30	15	1,116	490	0.1	-1.2	
Serbia	203	159	15	2	176	80	0.0	-13.3	
Slovenia	371	493	11	2	506	208	0.0	36.4	
Spain	5,035	7,697	148	152	7,997	3,767	0.5	58.8	
Turkey	1,431	1,223	75	52	1,350	359	0.1	-5.7	
Other Europe	3,827	1,615	496	273	2,384	1,003	0.2	-37.7	
Americas	98,683	93,698	4,803	14,954	113,455	49,233	7.5	15.0	
Argentina	1,808	2,744	17	63	2,824	1,382	0.2	56.2	
Brazil	1,672	2,521	21	27	2,569	1,242	0.2	53.6	
Canada	20,998	21,380	872	1,951	24,203	10,603	1.6	15.3	
Chile	1,272	1,525	45	5	1,575	789	0.1	23.8	
Colombia	1,289	469	11	19	499	255	0.0	-61.3	
Costa Rica	117	123	3	2	128	69	0.0	9.4	
Ecuador	69	42	0	8	50	27	0.0	-27.5	
Mexico	1,270	1,506	25	20	1,551	765	0.1	22.1	
Peru	218	229	9	3	241	93	0.0	10.6	
United States	67,914	61,710	3,584	12,654	77,948	33,167	5.2	14.8	
Uruguay	379	345	0	16	361	190	0.0	-4.7	
Other Americas	1,677	1,104	216	186	1,506	651	0.1	-10.2	
Africa	2,507	1,814	243	93	2,150	839	0.1	-14.2	
Cameroon	175	96	2	5	103	24	0.0	-41.1	
Congo	69	29	0	5	34	7	0.0	-50.7	
Ghana	221	73	7	2	82	8	0.0	-62.9	
Kenya	114	69	9	15	93	41	0.0	-18.4	
Liberia	217	53	1	0	54	9	0.0	-75.1	
Nigeria	229	127	109	16	252	41	0.0	10.0	
Sudan	9	17	3	2	22	5	0.0	144.4	
South Africa	1,170	1,209	83	15	1,307	628	0.1	11.7	
Uganda	135	21	2	7	30	12	0.0	-77.8	
Other Africa	168	120	27	26	173	64	0.0	3.0	
Middle East	4,061	4,941	154	62	5,157	1,885	0.3	27.0	
Egypt	61	64	5	8	77	15	0.0	26.2	
Iran	319	272	2	6	280	84	0.0	-12.2	
Iraq	21	34	2	1	37	8	0.0	76.2	
Israel	3,144	3,988	112	22	4,122	1,687	0.3	31.1	
Kuwait	171	213	0	1	214	9	0.0	25.1	
Oman	45	44	0	4	48	3	0.0	6.7	
Palestine	17	12	0	0	12	2	0.0	-29.4	
Qatar	41	44	0	0	44	22	0.0	7.3	
Saudi Arabia	27	33	3	2	38	5	0.0	40.7	
United Arab Emirates	47	101	0	0	101	3	0.0	114.9	
Yemen	50	36	2	2	40	4	0.0	-20.0	
Other Middle East	118	100	28	16	144	43	0.0	22.0	

Remark:

- Cambodian outbound tourist departures: 322,877
 - International outbound tourist departures: 1,508,287

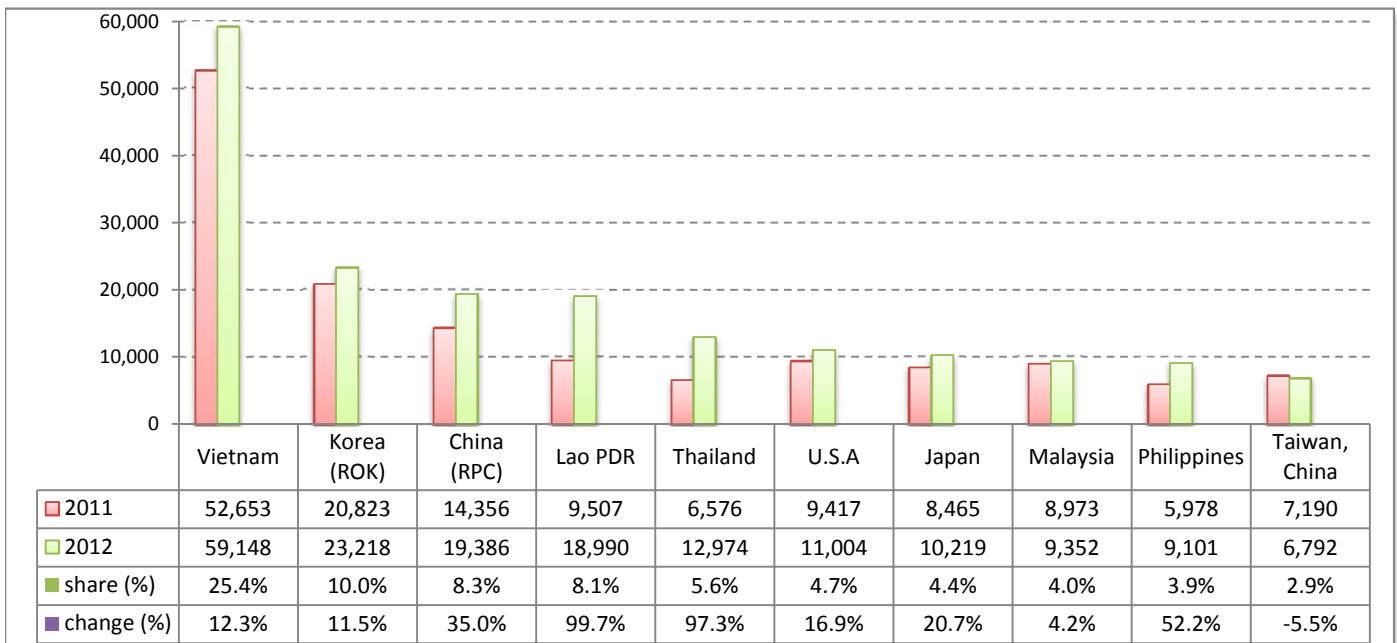
I. International tourist arrivals to Cambodia in May 2012 was:

233,220

II. Mode of arrivals

	visitors	share (%)
Air	104,398	44.8
Phnom Penh Int'l Airport	47,636	20.4
Siem Reap Int'l Airport	56,762	24.3
Land and Water ways	128,822	55.2
Land	126,637	54.3
Waterway	2,185	0.9
Total	233,220	100.0

III. Top ten markets arrivals in May 2012



IV. International tourist arrivals to Cambodia in May 2012

	Inbound tourism		share (%)		change (%)
	2011	2012	2011	2012	2012*/11
Air	90,269	104,398	47.4	44.8	15.7
Phnom Penh Int'l Airport	44,874	47,636	23.6	20.4	6.2
Siem Reap Int'l Airport	45,395	56,762	23.9	24.3	25.0
Land and Water ways	99,989	128,822	52.6	55.2	28.8
Land	95,915	126,637	50.4	54.3	32.0
Waterway	4,074	2,185	2.1	0.9	-46.4
Total	190,258	233,220	100.0	100.0	22.6

V. Remark: Percentage share of international tourist arrivals at destinations in May 2012

	Arrivals		share (%)		change (%)
	2011	2012	2011	2012	2012*/11
Phnom Penh & Other Destinations	75,105	111,421	39.5	47.8	48.4
Siem Reap Province	115,153	121,799	60.5	52.2	5.8
Total	190,258	233,220	100.0	100.0	22.6

VI. Outbound tourists departures in May 2012

	Outbound tourism		change (%)
	2011	2012	2012*/11
Cambodian outbound tourists	52,907	63,872	20.7
International outbound tourists	191,274	245,791	28.5

International Tourist Arrivals to Cambodia by Country of Residence in May 2012

(by all mean of transportations)

Regions Country of Residence	2011		2012			share		change	
			Purpose of Visit			Total	Female	(%)	(%)
			Holiday	Business	Other			2012*	2012*/11
GRAND TOTAL	190,258	211,387	13,037	8,796	233,220	105,815	100.0	22.6	
Asia and the Pacific	149,487	172,598	10,392	3,907	186,897	87,262	80.1	25.0	
ASEAN	89,379	111,579	2,771	2,357	116,707	57,650	50.0	30.6	
Brunei Darussalam	55	36	1	7	44	20	0.0	-20.0	
Indonesia	1,216	1,624	193	45	1,862	610	0.8	53.1	
Lao PDR	9,507	18,915	6	69	18,990	13,199	8.1	99.7	
Malaysia	8,973	8,817	473	62	9,352	3,586	4.0	4.2	
Myanmar	295	197	64	16	277	95	0.1	-6.1	
Philippines	5,978	8,429	577	95	9,101	5,363	3.9	52.2	
Singapore	4,126	4,745	183	31	4,959	1,855	2.1	20.2	
Thailand	6,576	11,645	659	670	12,974	5,424	5.6	97.3	
Vietnam	52,653	57,171	615	1,362	59,148	27,498	25.4	12.3	
Eastern Asia	51,379	53,098	6,791	572	60,461	26,164	25.9	17.7	
China (RPC)	14,356	15,350	3,910	126	19,386	7,918	8.3	35.0	
Hong Kong SAR	516	797	21	5	823	434	0.4	59.5	
Japan	8,465	9,289	721	209	10,219	4,184	4.4	20.7	
Korea (ROK)	20,823	21,754	1,304	160	23,218	10,746	10.0	11.5	
Mongolia	29	22	0	1	23	9	0.0	-20.7	
Taiwan, China	7,190	5,886	835	71	6,792	2,873	2.9	-5.5	
Southern Asia	1,735	1,934	257	84	2,275	609	1.0	31.1	
Afghanistan	2	2	1	2	5	1	0.0	150.0	
Bangladesh	153	54	17	8	79	8	0.0	-48.4	
Bhutan	2	24	0	2	26	0	0.0	1200.0	
India	1,285	1,403	164	47	1,614	479	0.7	25.6	
Nepal	109	236	17	20	273	68	0.1	150.5	
Pakistan	98	139	35	4	178	32	0.1	81.6	
Srilanka	86	76	23	1	100	21	0.0	16.3	
Western Asia	155	118	18	0	136	72	0.1	-12.3	
Kazakhstan	74	70	13	0	83	32	0.0	12.2	
Uzbekistan	81	48	5	0	53	40	0.0	-34.6	
Oceania	6,528	5,557	480	876	6,913	2,581	3.0	5.9	
Australia	5,375	4,455	427	841	5,723	2,136	2.5	6.5	
Fiji	6	3	1	0	4	1	0.0	-33.3	
New Zealand	1,147	1,099	52	35	1,186	444	0.5	3.4	
Other Asia & the Pacific	311	312	75	18	405	186	0.2	30.2	
Europe	26,174	25,674	1,557	1,830	29,061	11,475	12.5	11.0	
Northern Europe	8,731	7,864	492	195	8,551	3,007	3.7	-2.1	
Denmark	411	489	15	13	517	214	0.2	25.8	
Finland	265	281	14	11	306	95	0.1	15.5	
Iceland	52	11	0	0	11	2	0.0	-78.8	
Ireland	481	534	47	12	593	225	0.3	23.3	
Norway	319	350	14	9	373	121	0.2	16.9	
Sweden	601	539	26	12	577	214	0.2	-4.0	
United Kingdom	6,602	5,660	376	138	6,174	2,136	2.6	-6.5	
Western Europe	11,168	10,068	740	1,496	12,304	4,638	5.3	10.2	
Austria	244	255	16	16	287	105	0.1	17.6	
Belgium	643	558	37	43	638	234	0.3	-0.8	
France	5,891	4,607	453	1,213	6,273	2,481	2.7	6.5	
Germany	2,509	2,876	131	122	3,129	1,100	1.3	24.7	
Luxembourg	22	14	2	1	17	6	0.0	-22.7	
Monaco	8	3	0	0	3	2	0.0	-62.5	
Netherlands	1,184	1,099	52	35	1,186	444	0.5	0.2	
Switzerland	667	656	49	66	771	266	0.3	15.6	
Eastern Europe	4,053	5,370	120	28	5,518	2,839	2.4	36.1	
Bulgaria	22	42	0	0	42	27	0.0	90.9	
Czech Republic	127	138	3	3	144	54	0.1	13.4	
Estonia	31	13	2	1	16	6	0.0	-48.4	
Hungary	115	64	3	4	71	36	0.0	-38.3	
Lithuania	33	22	4	0	26	11	0.0	-21.2	
Poland	359	286	4	2	292	135	0.1	-18.7	
Romania	40	57	4	0	61	20	0.0	52.5	
Russian Federation	3,076	4,428	81	13	4,522	2,392	1.9	47.0	
Slovakia	56	51	6	5	62	24	0.0	10.7	
Ukraine	194	269	13	0	282	134	0.1	45.4	

International Tourist Arrivals to Cambodia by Country of Residence in May 2012

(by all mean of transportations)

Regions Country of Residence	2011		2012			share		change	
			Purpose of Visit			Total	Female	(%)	(%)
			Holiday	Business	Other			2012*	2012*/11
GRAND TOTAL	190,258	211,387	13,037	8,796	233,220	105,815	100.0	22.6	
Southern Europe	1,931	2,046	108	53	2,207	796	0.9	14.3	
Croatia	15	28	1	0	29	18	0.0	93.3	
Greece	46	37	1	5	43	12	0.0	-6.5	
Italy	666	714	46	26	786	240	0.3	18.0	
Portugal	115	150	8	3	161	75	0.1	40.0	
Serbia	12	17	2	0	19	6	0.0	58.3	
Slovenia	30	39	0	0	39	15	0.0	30.0	
Spain	901	910	28	19	957	403	0.4	6.2	
Turkey	146	151	22	0	173	27	0.1	18.5	
Other Europe	291	326	97	58	481	195	0.2	65.3	
Americas	13,732	12,131	1,023	3,034	16,188	6,723	6.9	17.9	
Argentina	167	283	1	6	290	132	0.1	73.7	
Brazil	277	361	5	0	366	178	0.2	32.1	
Canada	2,779	2,681	139	363	3,183	1,406	1.4	14.5	
Chile	156	210	42	1	253	122	0.1	62.2	
Colombia	66	68	5	4	77	37	0.0	16.7	
Costa Rica	15	10	0	0	10	7	0.0	-33.3	
Ecuador	15	8	0	1	9	4	0.0	-40.0	
Mexico	260	319	4	5	328	165	0.1	26.2	
Peru	50	36	2	1	39	17	0.0	-22.0	
United States	9,417	7,646	747	2,611	11,004	4,374	4.7	16.9	
Uruguay	260	252	0	0	252	143	0.1	-3.1	
Other Americas	270	257	78	42	377	138	0.2	39.6	
Africa	413	321	37	16	374	126	0.2	-9.4	
Cameroon	35	20	0	0	20	5	0.0	-42.9	
Congo	22	10	0	1	11	4	0.0	-50.0	
Ghana	48	14	1	0	15	3	0.0	-68.8	
Kenya	28	9	0	2	11	6	0.0	-60.7	
Liberia	50	10	1	0	11	2	0.0	-78.0	
Nigeria	31	27	18	2	47	7	0.0	51.6	
Sudan	2	2	0	0	2	0	0.0	0.0	
South Africa	153	212	10	3	225	88	0.1	47.1	
Uganda	33	5	2	1	8	3	0.0	-75.8	
Other Africa	11	12	5	7	24	8	0.0	118.2	
Middle East	452	663	28	9	700	229	0.3	54.9	
Egypt	18	13	0	0	13	3	0.0	-27.8	
Iran	49	50	0	2	52	15	0.0	6.1	
Iraq	7	5	1	0	6	1	0.0	-14.3	
Israel	305	508	22	4	534	199	0.2	75.1	
Kuwait	27	23	0	0	23	1	0.0	-14.8	
Oman	9	10	0	0	10	1	0.0	11.1	
Palestine	2	2	0	0	2	0	0.0	0.0	
Qatar	8	5	0	0	5	0	0.0	-37.5	
Saudi Arabia	3	6	1	0	7	2	0.0	133.3	
United Arab Emirates	5	27	0	0	27	1	0.0	440.0	
Yemen	13	5	0	1	6	0	0.0	-53.8	
Other Middle East	6	9	4	2	15	6	0.0	150.0	

Remark:

- Cambodian outbound tourist departures: 63,872
 - International outbound tourist departures: 245,791

COMPILED BY:

1. Mr. Kong Sopheareak

Director
Statistics & Tourism Information Department
Fax: +855 23 885003
E-mail: kong@mot.gov.kh

2. Mr. Horth Vanny

Chief of Tourism Statistics Office
Compile and data analysis
Tel.: +855 12 827664