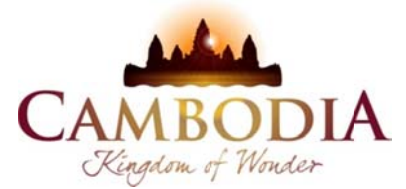




KINGDOM OF CAMBODIA
NATION RELIGION KING



TOURISM STATISTICS REPORT

April 2012

MINISTRY OF TOURISM

Statistics and Tourism Information Department

No. A3, Street 169, Sangkat Veal Vong, Khan 7 Makara, Phnom Penh, Cambodia.

Fax: +855 23 885003

E-mail: kong@mot.gov.kh

Web site: www.mot.gov.kh

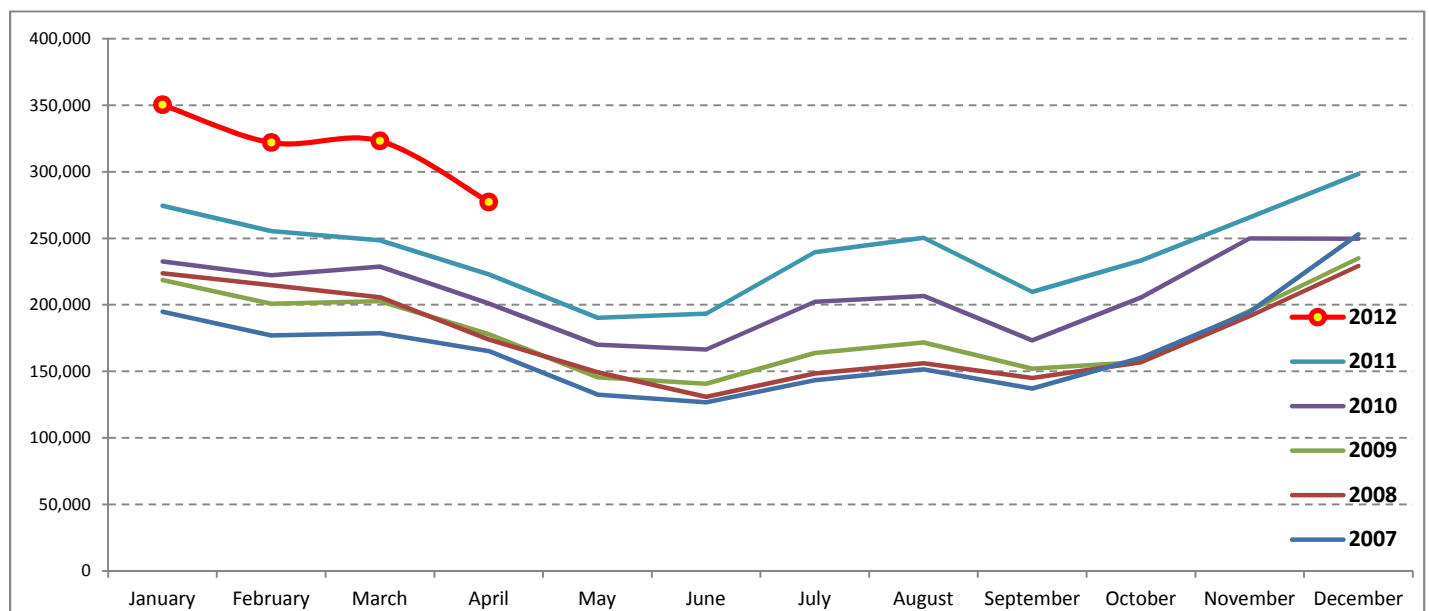
Tourism Highlights

International Tourist Arrivals, Average Length of Stay, Hotels Occupancy & Tourism Receipts 1993 - 2011

Years	Tourist Arrivals		Average Length	Hotels Occupancy	Tourism Receipts
	number	change (%)	of Stay (days)	(%)	(Million US\$)
1993	118,183	-	N/A	N/A	N/A
1994	176,617	49.4	N/A	N/A	N/A
1995	219,680	24.4	8.00	37.00	100
1996	260,489	18.6	7.50	40.00	118
1997	218,843	-16.0	6.40	30.00	103
1998	286,524	30.9	5.20	40.00	166
1999	367,743	28.3	5.50	44.00	190
2000	466,365	26.8	5.50	45.00	228
2001	604,919	29.7	5.50	48.00	304
2002	786,524	30.0	5.80	50.00	379
2003	701,014	-10.9	5.50	50.00	347
2004	1,055,202	50.5	6.30	52.00	578
2005	1,421,615	34.7	6.30	52.00	832
2006	1,700,041	19.6	6.50	54.79	1,049
2007	2,015,128	18.5	6.50	54.79	1,400
2008	2,125,465	5.5	6.65	62.68	1,595
2009	2,161,577	1.7	6.45	63.57	1,561
2010	2,508,289	16.0	6.45	65.74	1,786
2011	2,881,862	14.9	6.50	66.15	1,912

International tourist arrivals to Cambodia

Destination	Months	2007	2008	2009	2010	2011	2012	change (%) 2012*/11
Cambodia	Q1	550,813	644,205	622,288	683,692	778,467	995,210	27.8
<i>International tourist arrivals by all means of transportations</i>	January	194,932	223,581	218,691	232,590	274,471	350,257	27.6
	February	177,130	214,902	200,789	222,354	255,499	321,870	26.0
	March	178,751	205,722	202,808	228,748	248,497	323,083	30.0
	Q2	424,536	454,031	464,230	537,464	606,562	277,304	
	April	165,347	173,903	177,955	200,965	223,032	277,304	24.3
	May	132,512	149,275	145,564	170,164	190,258		
	June	126,677	130,853	140,711	166,335	193,272		
	Q3	431,815	449,693	487,422	582,024	699,760	0	
	July	143,310	148,449	163,817	202,349	239,527		
	August	151,478	156,098	171,668	206,563	250,429		
	September	137,027	145,146	151,937	173,112	209,804		
	Q4	607,964	577,536	587,637	705,109	797,073	0	
	October	160,235	156,718	157,105	205,515	233,190		
	November	194,646	191,549	195,570	249,892	265,539		
	December	253,083	229,269	234,962	249,702	298,344		
	Total	2,015,128	2,125,465	2,161,577	2,508,289	2,881,862	1,272,514	27.1



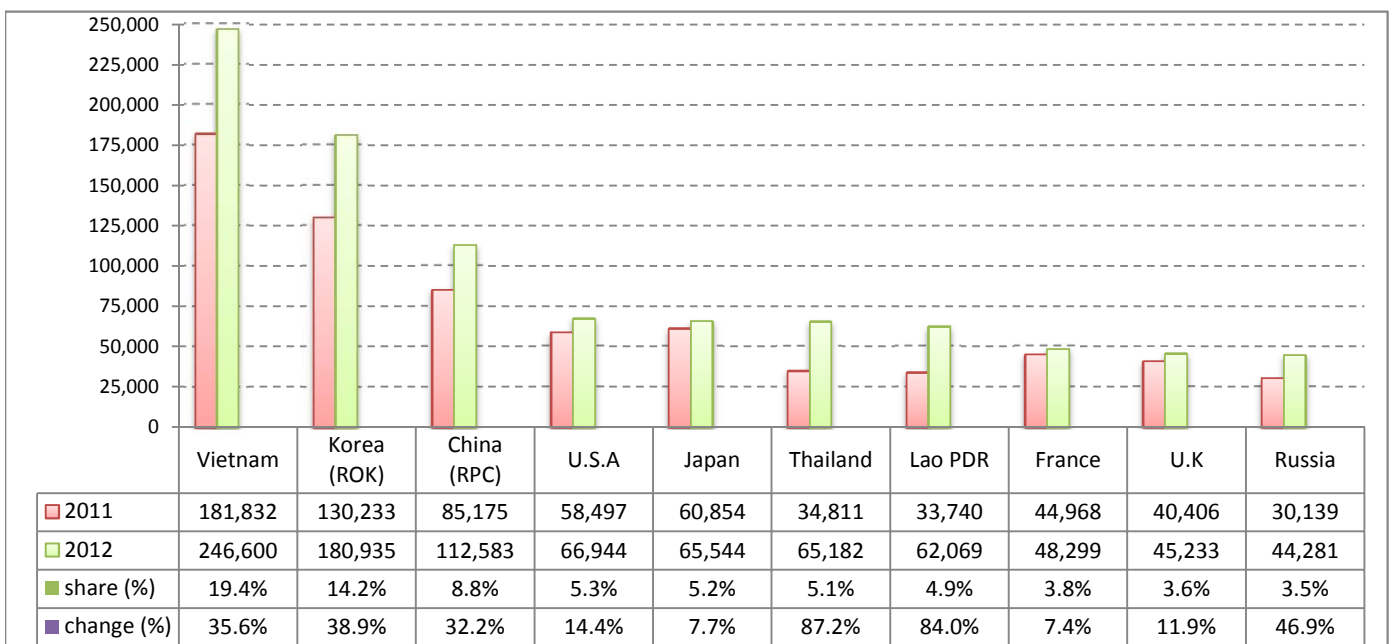
Executive Summary Report in the First Four Months 2012

I. International tourist arrivals to Cambodia in January - April 2012 was: **1,272,514**

II. Mode of arrivals

	visitors	share (%)
Air	640,038	50.3
Phnom Penh Int'l Airport	241,291	19.0
Siem Reap Int'l Airport	398,747	31.3
Land and Water ways	632,476	49.7
Land	592,745	46.6
Waterway	39,731	3.1
Total	1,272,514	100.0

III. Top ten markets arrivals in January - April 2012



IV. International tourist arrivals to Cambodia in January - April 2012

	Inbound		share (%)		change (%)
	2011	2012	2011	2012	2012*/11
Air	534,094	640,038	53.3	50.3	19.8
Phnom Penh Int'l Airport	220,036	241,291	22.0	19.0	9.7
Siem Reap Int'l Airport	314,058	398,747	31.4	31.3	27.0
Land and Water ways	467,405	632,476	46.7	49.7	35.3
Land	434,232	592,745	43.4	46.6	36.5
Waterway	33,173	39,731	3.3	3.1	19.8
Total	1,001,499	1,272,514	100.0	100.0	27.1

V. Remark: Percentage share of international tourist arrivals at destinations in January - April 2012

	Arrivals		share (%)		change (%)
	2011	2012	2011	2012	2012*/11
Phnom Penh & Other Destinations	435,574	452,862	43.5	35.6	4.0
Siem Reap Province	565,925	819,652	56.5	64.4	44.8
Total	1,001,499	1,272,514	100.0	100.0	27.1

VI. Outbound tourists departures in January - April 2012

	Outbound		change (%)
	2011	2012	2012*/11
Cambodian outbound tourists	189,455	259,005	36.7
International outbound tourists	998,884	1,262,496	26.4

International Tourist Arrivals to Cambodia by Country of Residence in January - April 2012

(by all mean of transportations)

Regions Country of Residence	2011		2012			share		change	
			Purpose of Visit			Total	Female	(%)	(%)
			Holiday	Business	Other			2012*	2012*/11
GRAND TOTAL	1,001,499	1,175,577	53,027	43,910	1,272,514	585,931	100.0	27.1	
Asia and the Pacific	687,736	849,768	41,672	24,793	916,233	431,196	72.0	33.2	
ASEAN	320,243	435,712	11,168	15,761	462,641	217,279	36.4	44.5	
Brunei Darussalam	125	258	4	74	336	131	0.0	168.8	
Indonesia	4,909	5,047	713	153	5,913	1,988	0.5	20.5	
Lao PDR	33,740	61,870	24	175	62,069	42,704	4.9	84.0	
Malaysia	30,152	32,206	2,250	247	34,703	12,005	2.7	15.1	
Myanmar	1,726	1,604	209	73	1,886	852	0.1	9.3	
Philippines	20,091	29,107	2,149	383	31,639	19,171	2.5	57.5	
Singapore	12,857	13,583	627	103	14,313	4,959	1.1	11.3	
Thailand	34,811	59,069	2,996	3,117	65,182	32,036	5.1	87.2	
Vietnam	181,832	232,968	2,196	11,436	246,600	103,433	19.4	35.6	
Eastern Asia	314,105	363,146	26,973	3,819	393,938	188,865	31.0	25.4	
China (RPC)	85,175	95,314	16,150	1,119	112,583	52,442	8.8	32.2	
Hong Kong SAR	1,731	2,534	76	16	2,626	1,263	0.2	51.7	
Japan	60,854	62,267	2,393	884	65,544	29,365	5.2	7.7	
Korea (ROK)	130,233	175,131	4,688	1,116	180,935	91,546	14.2	38.9	
Mongolia	91	119	9	19	147	79	0.0	61.5	
Taiwan, China	36,021	27,781	3,657	665	32,103	14,170	2.5	-10.9	
Southern Asia	6,206	6,112	981	327	7,420	2,079	0.6	19.6	
Afghanistan	70	43	3	13	59	8	0.0	-15.7	
Bangladesh	371	277	64	41	382	55	0.0	3.0	
Bhutan	34	33	0	9	42	9	0.0	23.5	
India	4,712	4,935	649	186	5,770	1,747	0.5	22.5	
Nepal	339	302	46	26	374	105	0.0	10.3	
Pakistan	358	218	117	29	364	58	0.0	1.7	
Srilanka	322	304	102	23	429	97	0.0	33.2	
Western Asia	866	984	53	5	1,042	576	0.1	20.3	
Kazakhstan	632	793	38	4	835	441	0.1	32.1	
Uzbekistan	234	191	15	1	207	135	0.0	-11.5	
Oceania	42,449	42,314	2,134	4,571	49,019	21,668	3.9	15.5	
Australia	37,198	37,192	1,752	3,900	42,844	19,135	3.4	15.2	
Fiji	56	29	5	2	36	8	0.0	-35.7	
New Zealand	5,195	5,093	377	669	6,139	2,525	0.5	18.2	
Other Asia & the Pacific	3,867	1,500	363	310	2,173	729	0.2	-43.8	
Europe	223,109	238,471	7,243	7,067	252,781	109,856	19.9	13.3	
Northern Europe	62,463	64,758	2,303	876	67,937	26,386	5.3	8.8	
Denmark	4,340	4,210	116	48	4,374	1,765	0.3	0.8	
Finland	3,313	2,795	101	79	2,975	1,104	0.2	-10.2	
Iceland	127	188	3	1	192	73	0.0	51.2	
Ireland	2,679	2,742	121	55	2,918	1,083	0.2	8.9	
Norway	4,079	3,877	84	40	4,001	1,668	0.3	-1.9	
Sweden	7,519	7,955	187	102	8,244	3,201	0.6	9.6	
United Kingdom	40,406	42,991	1,691	551	45,233	17,492	3.6	11.9	
Western Europe	99,690	98,181	3,543	5,540	107,264	45,738	8.4	7.6	
Austria	3,526	3,768	72	108	3,948	1,573	0.3	12.0	
Belgium	5,181	5,215	211	185	5,611	2,239	0.4	8.3	
France	44,968	41,748	2,140	4,411	48,299	20,961	3.8	7.4	
Germany	29,832	31,192	602	429	32,223	13,280	2.5	8.0	
Luxembourg	221	176	2	4	182	77	0.0	-17.6	
Monaco	17	18	0	0	18	10	0.0	5.9	
Netherlands	8,372	8,544	260	144	8,948	3,633	0.7	6.9	
Switzerland	7,573	7,520	256	259	8,035	3,965	0.6	6.1	
Eastern Europe	41,264	55,835	539	131	56,505	29,008	4.4	36.9	
Bulgaria	187	260	6	0	266	144	0.0	42.2	
Czech Republic	1,582	2,035	32	10	2,077	875	0.2	31.3	
Estonia	517	433	6	4	443	199	0.0	-14.3	
Hungary	1,423	1,244	18	5	1,267	530	0.1	-11.0	
Lithuania	864	516	7	1	524	289	0.0	-39.4	
Poland	3,817	4,229	22	24	4,275	2,096	0.3	12.0	
Romania	423	465	17	5	487	281	0.0	15.1	
Russian Federation	30,139	43,849	366	66	44,281	23,210	3.5	46.9	
Slovakia	587	717	33	11	761	302	0.1	29.6	
Ukraine	1,725	2,087	32	5	2,124	1,082	0.2	23.1	

International Tourist Arrivals to Cambodia by Country of Residence in January - April 2012

(by all mean of transportations)

Regions Country of Residence	2011		2012			share		change	
			Purpose of Visit			Total	Female	(%)	(%)
			Holiday	Business	Other			2012*	2012*/11
GRAND TOTAL	1,001,499	1,175,577	53,027	43,910	1,272,514	585,931	100.0	27.1	
Southern Europe	16,156	18,408	459	305	19,172	7,916	1.5	18.7	
Croatia	214	273	7	1	281	138	0.0	31.3	
Greece	535	394	5	4	403	133	0.0	-24.7	
Italy	8,441	8,365	228	99	8,692	3,267	0.7	3.0	
Portugal	1,015	921	22	12	955	415	0.1	-5.9	
Serbia	191	142	13	2	157	74	0.0	-17.8	
Slovenia	341	454	11	2	467	193	0.0	37.0	
Spain	4,134	6,787	120	133	7,040	3,364	0.6	70.3	
Turkey	1,285	1,072	53	52	1,177	332	0.1	-8.4	
Other Europe	3,536	1,289	399	215	1,903	808	0.1	-46.2	
Americas	84,951	81,567	3,780	11,920	97,267	42,510	7.6	14.5	
Argentina	1,641	2,461	16	57	2,534	1,250	0.2	54.4	
Brazil	1,395	2,160	16	27	2,203	1,064	0.2	57.9	
Canada	18,219	18,699	733	1,588	21,020	9,197	1.7	15.4	
Chile	1,116	1,315	3	4	1,322	667	0.1	18.5	
Colombia	1,223	401	6	15	422	218	0.0	-65.5	
Costa Rica	102	113	3	2	118	62	0.0	15.7	
Ecuador	54	34	0	7	41	23	0.0	-24.1	
Mexico	1,010	1,187	21	15	1,223	600	0.1	21.1	
Peru	168	193	7	2	202	76	0.0	20.2	
United States	58,497	54,064	2,837	10,043	66,944	28,793	5.3	14.4	
Uruguay	119	93	0	16	109	47	0.0	-8.4	
Other Americas	1,407	847	138	144	1,129	513	0.1	-19.8	
Africa	2,094	1,493	206	77	1,776	713	0.1	-15.2	
Cameroon	140	76	2	5	83	19	0.0	-40.7	
Congo	47	19	0	4	23	3	0.0	-51.1	
Ghana	173	59	6	2	67	5	0.0	-61.3	
Kenya	86	60	9	13	82	35	0.0	-4.7	
Liberia	167	43	0	0	43	7	0.0	-74.3	
Nigeria	198	100	91	14	205	34	0.0	3.5	
Sudan	7	15	3	2	20	5	0.0	185.7	
South Africa	1,017	997	73	12	1,082	540	0.1	6.4	
Uganda	102	16	0	6	22	9	0.0	-78.4	
Other Africa	157	108	22	19	149	56	0.0	-5.1	
Middle East	3,609	4,278	126	53	4,457	1,656	0.4	23.5	
Egypt	43	51	5	8	64	12	0.0	48.8	
Iran	270	222	2	4	228	69	0.0	-15.6	
Iraq	14	29	1	1	31	7	0.0	121.4	
Israel	2,839	3,480	90	18	3,588	1,488	0.3	26.4	
Kuwait	144	190	0	1	191	8	0.0	32.6	
Oman	36	34	0	4	38	2	0.0	5.6	
Palestine	15	10	0	0	10	2	0.0	-33.3	
Qatar	33	39	0	0	39	22	0.0	18.2	
Saudi Arabia	24	27	2	2	31	3	0.0	29.2	
United Arab Emirates	42	74	0	0	74	2	0.0	76.2	
Yemen	37	31	2	1	34	4	0.0	-8.1	
Other Middle East	112	91	24	14	129	37	0.0	15.2	

Remark:

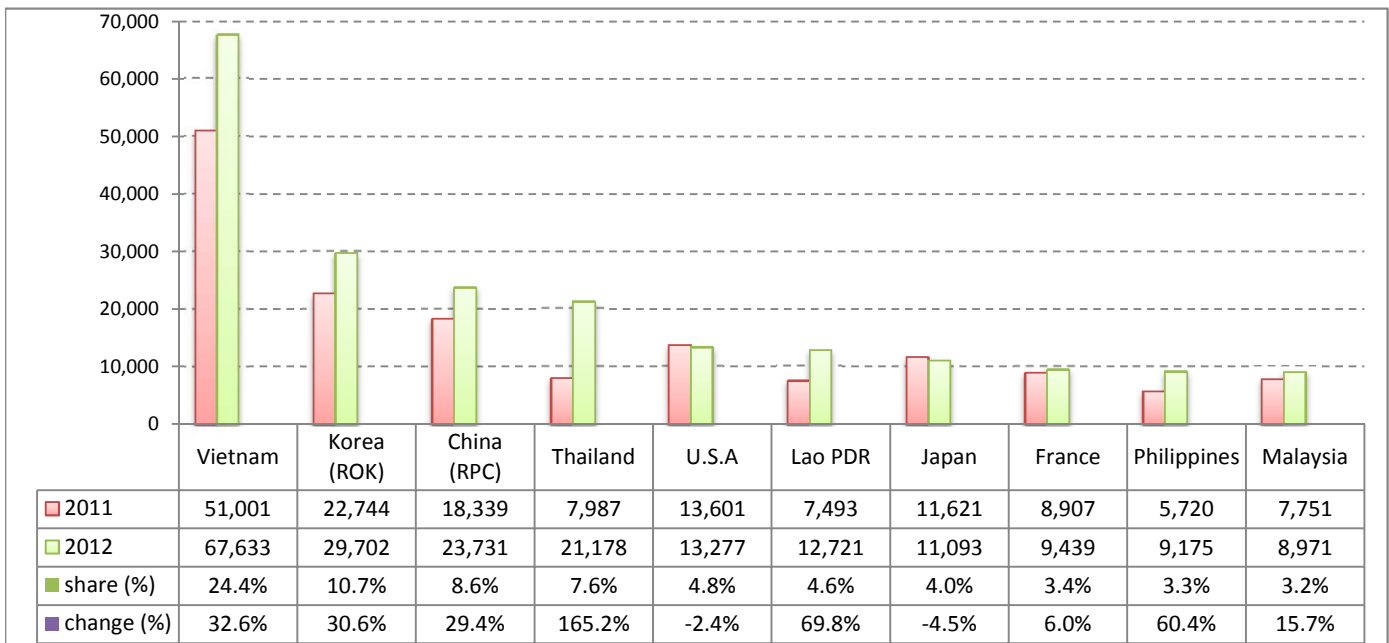
- Cambodian outbound tourist departures: 259,005
 - International outbound tourist departures: 1,262,496

I. International tourist arrivals to Cambodia in April 2012 was: **277,304**

II. Mode of arrivals

	visitors	share (%)
Air	126,282	45.5
Phnom Penh Int'l Airport	53,883	19.4
Siem Reap Int'l Airport	72,399	26.1
Land and Water ways	151,022	54.5
Land	147,325	53.1
Waterway	3,697	1.3
Total	277,304	100.0

III. Top ten markets arrivals in April 2012



IV. International tourist arrivals to Cambodia in April 2012

	Inbound		share (%)		change (%)
	2011	2012	2011	2012	2012*/11
Air	106,665	126,282	47.8	45.5	18.4
Phnom Penh Int'l Airport	49,478	53,883	22.2	19.4	8.9
Siem Reap Int'l Airport	57,187	72,399	25.6	26.1	26.6
Land and Water ways	116,367	151,022	52.2	54.5	29.8
Land	108,624	147,325	48.7	53.1	35.6
Waterway	7,743	3,697	3.5	1.3	-52.3
Total	223,032	277,304	100.0	100.0	24.3

V. Remark: Percentage share of international tourist arrivals at destinations in April 2012

	Arrivals		share (%)		change (%)
	2011	2012	2011	2012	2012*/11
Phnom Penh & Other Destinations	93,079	97,526	41.7	35.2	4.8
Siem Reap Province	129,953	179,778	58.3	64.8	38.3
Total	223,032	277,304	100.0	100.0	24.3

VI. Outbound tourists departures in April 2012

	Outbound		change (%)
	2011	2012	2012*/11
Cambodian outbound tourists	52,138	70,738	35.7
International outbound tourists	215,957	275,739	27.7

International Tourist Arrivals to Cambodia by Country of Residence in April 2012

(by all mean of transportations)

Regions Country of Residence	2011	2012			Total	Female	share	change
		Purpose of Visit					(%)	(%)
		Holiday	Business	Other			2012*	2012*/11
GRAND TOTAL	223,032	249,620	15,176	12,508	277,304	124,451	100.0	24.3
Asia and the Pacific	160,638	194,293	12,090	5,655	212,038	97,565	76.5	32.0
ASEAN	84,834	119,670	3,344	2,378	125,392	59,167	45.2	47.8
Brunei Darussalam	40	40	1	7	48	20	0.0	20.0
Indonesia	1,272	1,337	207	49	1,593	497	0.6	25.2
Lao PDR	7,493	12,683	6	32	12,721	9,129	4.6	69.8
Malaysia	7,751	8,251	621	99	8,971	3,154	3.2	15.7
Myanmar	669	536	71	18	625	308	0.2	-6.6
Philippines	5,720	8,262	808	105	9,175	5,343	3.3	60.4
Singapore	2,901	3,210	205	33	3,448	1,046	1.2	18.9
Thailand	7,987	19,023	841	1,314	21,178	14,382	7.6	165.2
Vietnam	51,001	66,328	584	721	67,633	25,288	24.4	32.6
Eastern Asia	62,042	64,218	7,751	1,347	73,316	33,064	26.4	18.2
China (RPC)	18,339	18,840	4,577	314	23,731	10,172	8.6	29.4
Hong Kong SAR	436	869	18	6	893	441	0.3	104.8
Japan	11,621	10,235	605	253	11,093	4,495	4.0	-4.5
Korea (ROK)	22,744	27,809	1,504	389	29,702	14,569	10.7	30.6
Mongolia	17	15	4	0	19	13	0.0	11.8
Taiwan, China	8,885	6,450	1,043	385	7,878	3,374	2.8	-11.3
Southern Asia	1,480	1,584	263	92	1,939	540	0.7	31.0
Afghanistan	1	9	0	0	9	0	0.0	800.0
Bangladesh	87	46	20	12	78	16	0.0	-10.3
Bhutan	6	5	0	1	6	0	0.0	0.0
India	1,130	1,323	174	65	1,562	456	0.6	38.2
Nepal	73	67	22	7	96	25	0.0	31.5
Pakistan	96	49	19	5	73	8	0.0	-24.0
Srilanka	87	85	28	2	115	35	0.0	32.2
Western Asia	141	134	16	1	151	86	0.1	7.1
Kazakhstan	68	82	13	1	96	48	0.0	41.2
Uzbekistan	73	52	3	0	55	38	0.0	-24.7
Oceania	10,213	8,163	569	1,762	10,494	4,411	3.8	2.8
Australia	8,705	6,963	489	1,464	8,916	3,769	3.2	2.4
Fiji	18	3	1	2	6	1	0.0	-66.7
New Zealand	1,490	1,197	79	296	1,572	641	0.6	5.5
Other Asia & the Pacific	1,928	524	147	75	746	297	0.3	-61.3
Europe	42,437	40,955	1,941	2,425	45,321	19,142	16.3	6.8
Northern Europe	12,108	10,887	576	258	11,721	4,194	4.2	-3.2
Denmark	746	604	27	15	646	252	0.2	-13.4
Finland	462	387	22	33	442	138	0.2	-4.3
Iceland	22	59	0	0	59	27	0.0	168.2
Ireland	586	527	41	16	584	215	0.2	-0.3
Norway	679	634	21	14	669	257	0.2	-1.5
Sweden	1,182	1,014	49	31	1,094	425	0.4	-7.4
United Kingdom	8,431	7,662	416	149	8,227	2,880	3.0	-2.4
Western Europe	18,646	16,267	929	1,940	19,136	7,778	6.9	2.6
Austria	545	481	18	56	555	215	0.2	1.8
Belgium	1,146	989	49	51	1,089	435	0.4	-5.0
France	8,907	7,284	604	1,551	9,439	3,893	3.4	6.0
Germany	5,175	5,059	133	136	5,328	2,168	1.9	3.0
Luxembourg	50	45	0	0	45	19	0.0	-10.0
Monaco	8	8	0	0	8	4	0.0	0.0
Netherlands	1,506	1,285	66	45	1,396	547	0.5	-7.3
Switzerland	1,309	1,116	59	101	1,276	497	0.5	-2.5
Eastern Europe	7,004	8,952	115	31	9,098	4,780	3.3	29.9
Bulgaria	41	47	4	0	51	26	0.0	24.4
Czech Republic	311	312	8	2	322	146	0.1	3.5
Estonia	63	33	1	0	34	20	0.0	-46.0
Hungary	162	92	2	1	95	36	0.0	-41.4
Lithuania	95	61	0	1	62	31	0.0	-34.7
Poland	574	798	4	6	808	374	0.3	40.8
Romania	78	70	4	0	74	30	0.0	-5.1
Russian Federation	5,316	7,065	78	15	7,158	3,891	2.6	34.7
Slovakia	117	174	6	5	185	66	0.1	58.1
Ukraine	247	300	8	1	309	160	0.1	25.1

International Tourist Arrivals to Cambodia by Country of Residence in April 2012

(by all mean of transportations)

Regions Country of Residence	2011		2012			share		change	
			Purpose of Visit			Total	Female	(%)	(%)
			Holiday	Business	Other			2012*	2012*/11
GRAND TOTAL	223,032	249,620	15,176	12,508	277,304	124,451	100.0	24.3	
Southern Europe	2,873	4,353	127	99	4,579	2,074	1.7	59.4	
Croatia	26	25	2	0	27	12	0.0	3.8	
Greece	96	100	2	1	103	37	0.0	7.3	
Italy	1,046	981	63	33	1,077	356	0.4	3.0	
Portugal	259	291	6	0	297	140	0.1	14.7	
Serbia	28	19	4	1	24	6	0.0	-14.3	
Slovenia	95	71	1	0	72	32	0.0	-24.2	
Spain	1,152	2,657	37	55	2,749	1,435	1.0	138.6	
Turkey	171	209	12	9	230	56	0.1	34.5	
Other Europe	1,806	496	194	97	787	316	0.3	-56.4	
Americas	18,835	13,403	1,058	4,404	18,865	7,381	6.8	0.2	
Argentina	284	521	8	42	571	266	0.2	101.1	
Brazil	248	407	6	5	418	182	0.2	68.5	
Canada	3,585	2,704	156	525	3,385	1,376	1.2	-5.6	
Chile	205	170	1	0	171	74	0.1	-16.6	
Colombia	104	123	1	6	130	71	0.0	25.0	
Costa Rica	48	12	1	1	14	5	0.0	-70.8	
Ecuador	12	5	0	1	6	3	0.0	-50.0	
Mexico	353	317	8	4	329	170	0.1	-6.8	
Peru	63	48	3	0	51	13	0.0	-19.0	
United States	13,601	8,743	790	3,744	13,277	4,982	4.8	-2.4	
Uruguay	23	28	0	9	37	21	0.0	60.9	
Other Americas	309	325	84	67	476	218	0.2	54.0	
Africa	536	303	56	14	373	131	0.1	-30.4	
Cameroon	43	13	1	0	14	2	0.0	-67.4	
Congo	7	0	0	1	1	0	0.0	-85.7	
Ghana	40	8	1	0	9	0	0.0	-77.5	
Kenya	32	9	1	4	14	3	0.0	-56.3	
Liberia	42	8	0	0	8	1	0.0	-81.0	
Nigeria	71	16	21	1	38	2	0.0	-46.5	
Sudan	0	4	2	1	7	2	0.0		
South Africa	247	227	22	2	251	107	0.1	1.6	
Uganda	32	3	0	2	5	2	0.0	-84.4	
Other Africa	22	15	8	3	26	12	0.0	18.2	
Middle East	586	666	31	10	707	232	0.3	20.6	
Egypt	7	13	0	0	13	3	0.0	85.7	
Iran	81	50	0	2	52	15	0.0	-35.8	
Iraq	5	5	1	0	6	1	0.0	20.0	
Israel	400	508	22	4	534	199	0.2	33.5	
Kuwait	30	23	0	0	23	1	0.0	-23.3	
Oman	14	10	0	0	10	1	0.0	-28.6	
Palestine	5	2	0	0	2	0	0.0	-60.0	
Qatar	2	5	0	0	5	0	0.0	150.0	
Saudi Arabia	6	6	1	0	7	2	0.0	16.7	
United Arab Emirates	12	27	0	0	27	1	0.0	125.0	
Yemen	9	5	0	1	6	0	0.0	-33.3	
Other Middle East	15	12	7	3	22	9	0.0	46.7	

Remark:

- Cambodian outbound tourist departures: 70,738
- International outbound tourist departures: 275,739

COMPILED BY:

1. Mr. Kong Sopheareak

Director
Statistics & Tourism Information Department
Fax: +855 23 885003
E-mail: kong@mot.gov.kh

2. Mr. Horth Vanny

Chief of Tourism Statistics Office
Compile and data analysis
Tel.: +855 12 827664