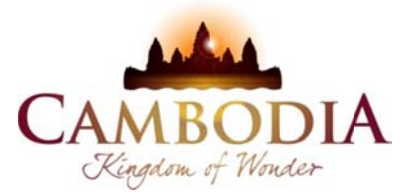




KINGDOM OF CAMBODIA  
NATION RELIGION KING



# TOURISM STATISTICS REPORT

# October 2011

**MINISTRY OF TOURISM**

Statistics and Tourism Information Department

No. A3, Street 169, Sangkat Veal Vong, Khan 7 Makara, Phnom Penh, Cambodia.

Fax: +855 23 885003

E-mail: [kong@mot.gov.kh](mailto:kong@mot.gov.kh)

Web site: [www.mot.gov.kh](http://www.mot.gov.kh)

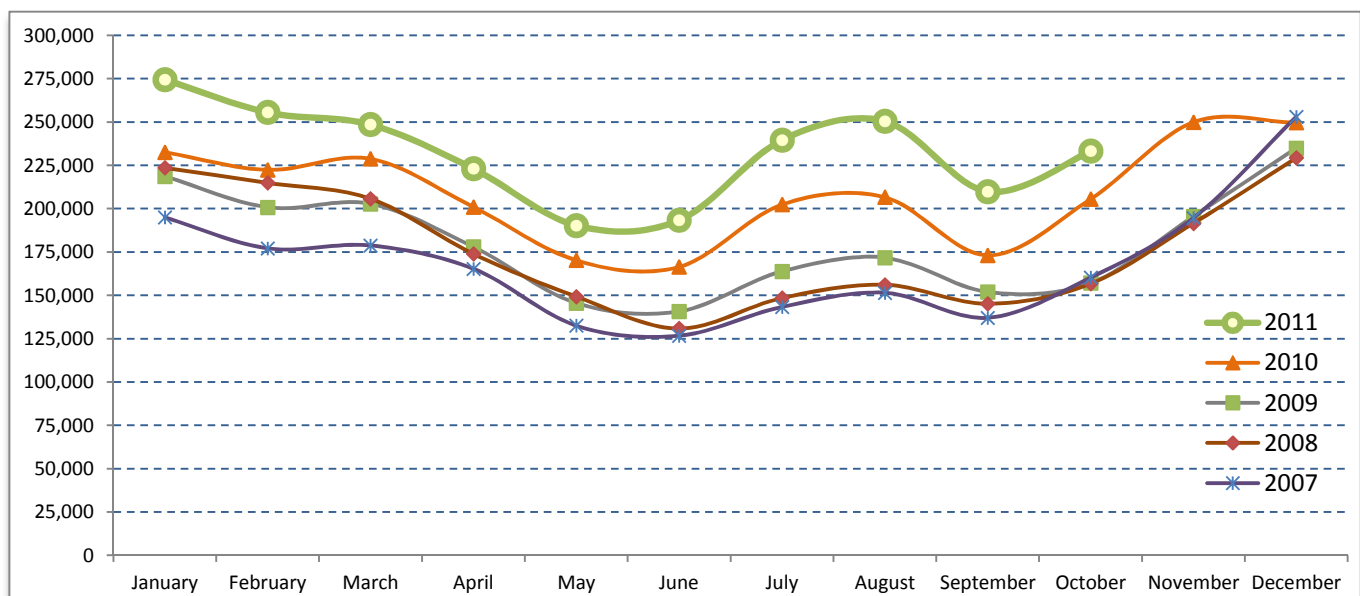
## Tourism Highlights

### International Tourist Arrivals, Average Length of Stay, Hotels Occupancy & Tourism Receipts 1993 - 2010

Years	Tourist Arrivals		Average Length	Hotels Occupancy	Tourism Receipts
	number	change (%)	of Stay (days)	(%)	(million US\$)
1993	118,183	-	N/A	N/A	N/A
1994	176,617	49.4%	N/A	N/A	N/A
1995	219,680	24.4%	8.00	37.00	100
1996	260,489	18.6%	7.50	40.00	118
1997	218,843	-16.0%	6.40	30.00	103
1998	289,524	32.3%	5.20	40.00	166
1999	367,743	27.0%	5.50	44.00	190
2000	466,365	26.8%	5.50	45.00	228
2001	604,919	29.7%	5.50	48.00	304
2002	786,524	30.0%	5.80	50.00	379
2003	701,014	-10.9%	5.50	50.00	347
2004	1,055,202	50.5%	6.30	52.00	578
2005	1,421,615	34.7%	6.30	52.00	832
2006	1,700,041	19.6%	6.50	54.79	1,049
2007	2,015,128	18.5%	6.50	54.79	1,400
2008	2,125,465	5.5%	6.65	62.68	1,595
2009	2,161,577	1.7%	6.45	63.57	1,561
2010	2,508,289	16.0%	6.45	65.74	1,786

### International tourist arrivals to Cambodia

Destination	Months	2007	2008	2009	2010	2011	change (%) 2011*/10
<b>Cambodia</b>	<b>Q1</b>	<b>550,813</b>	<b>644,205</b>	<b>622,288</b>	<b>683,692</b>	<b>778,467</b>	<b>13.9</b>
<i>International tourist arrivals</i>	January	194,932	223,581	218,691	232,590	274,471	18.0
<i>by all means of</i>	February	177,130	214,902	200,789	222,354	255,499	14.9
<i>transportations</i>	March	178,751	205,722	202,808	228,748	248,497	8.6
	<b>Q2</b>	<b>424,536</b>	<b>454,031</b>	<b>464,230</b>	<b>537,464</b>	<b>606,562</b>	<b>12.9</b>
	April	165,347	173,903	177,955	200,965	223,032	11.0
	May	132,512	149,275	145,564	170,164	190,258	11.8
	June	126,677	130,853	140,711	166,335	193,272	16.2
	<b>Q3</b>	<b>431,815</b>	<b>449,693</b>	<b>487,422</b>	<b>582,024</b>	<b>699,760</b>	<b>20.2</b>
	July	143,310	148,449	163,817	202,349	239,527	18.4
	August	151,478	156,098	171,668	206,563	250,429	21.2
	September	137,027	145,146	151,937	173,112	209,804	21.2
	<b>Q4</b>	<b>607,964</b>	<b>577,536</b>	<b>587,637</b>	<b>705,109</b>	<b>233,190</b>	
	October	160,235	156,718	157,105	205,515	233,190	13.5
	November	194,646	191,549	195,570	249,892		
	December	253,083	229,269	234,962	249,702		
	<b>Total</b>	<b>2,015,128</b>	<b>2,125,465</b>	<b>2,161,577</b>	<b>2,508,289</b>	<b>2,317,979</b>	<b>15.4%</b>



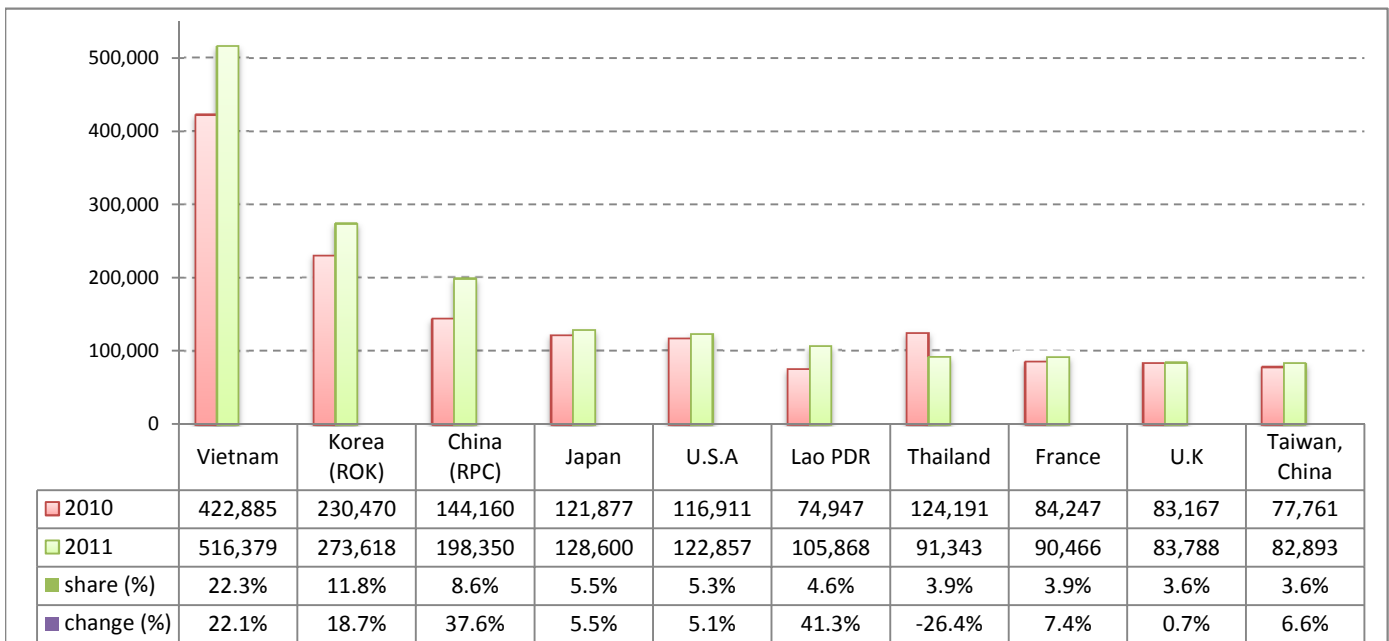
## Executive Summary Report in the First Ten Months of 2011

I. International tourist arrivals to Cambodia in January - October was: **2,317,979**

### II. Mode of arrivals

	visitors	share (%)
<b>Air</b>	<b>1,168,482</b>	<b>50.4</b>
Phnom Penh Int'l Airport	521,454	22.5
Siem Reap Int'l Airport	647,028	27.9
<b>Land and Water ways</b>	<b>1,149,497</b>	<b>49.6</b>
Land	1,083,628	46.7
Water ways	65,869	2.8
<b>Total</b>	<b>2,317,979</b>	<b>100.0</b>

### III. Top ten markets arrivals in January - October 2011



### IV. International tourist arrivals to Cambodia in January - October 2011

	Inbound		share (%)		change (%)
	2010	2011	2010	2011	2011*/10
<b>Air</b>	<b>1,028,428</b>	<b>1,168,482</b>	<b>51.2</b>	<b>50.4</b>	<b>13.6</b>
Phnom Penh Int'l Airport	471,283	521,454	23.5	22.5	10.6
Siem Reap Int'l Airport	557,145	647,028	27.7	27.9	16.1
<b>Land and Water ways</b>	<b>980,267</b>	<b>1,149,497</b>	<b>48.8</b>	<b>49.6</b>	<b>17.3</b>
Land	917,273	1,083,628	45.7	46.7	18.1
Water ways	62,994	65,869	3.1	2.8	4.6
<b>Total</b>	<b>2,008,695</b>	<b>2,317,979</b>	<b>100.0</b>	<b>100.0</b>	<b>15.4</b>

### V. Remark: Percentage share of international tourist arrivals at destinations in January - October 2011

	Arrivals		share (%)		change (%)
	2010	2011	2010	2011	2011*/10
Phnom Penh & Other Destinations	972,281	1,028,425	48.4	44.4	5.8
Siem Reap Province	1,036,414	1,289,554	51.6	55.6	24.4
<b>Total</b>	<b>2,008,695</b>	<b>2,317,979</b>	<b>100.0</b>	<b>100.0</b>	<b>15.4</b>

### VI. Outbound tourists departures in January - October 2011

	Outbound		change (%)
	2010	2011	2011*/10
Cambodian outbound tourists	417,227	573,439	37.4
International outbound tourists	1,893,816	2,303,885	21.7

## International Tourist Arrivals to Cambodia by Country of Residence in January - October 2011

(by all mean of transportations)

Regions Country of Residence	2010	2011			Total	Female	share	change
		Purpose of Visit					(%)	(%)
		Tourists	Business	Other			2011*	2011*/10
<b>GRAND TOTAL</b>	<b>2,008,695</b>	<b>2,170,753</b>	<b>120,919</b>	<b>26,307</b>	<b>2,317,979</b>	<b>1,038,971</b>	<b>100.0</b>	<b>15.4</b>
<b>Asia and the Pacific</b>	<b>1,468,638</b>	<b>1,601,676</b>	<b>96,656</b>	<b>13,601</b>	<b>1,711,933</b>	<b>785,324</b>	<b>73.9</b>	<b>16.6</b>
<b>ASEAN</b>	<b>785,022</b>	<b>871,187</b>	<b>28,441</b>	<b>6,275</b>	<b>905,903</b>	<b>412,458</b>	<b>39.1</b>	<b>15.4</b>
Brunei Darussalam	404	272	15	94	381	150	0.0	-5.7
Indonesia	10,114	9,847	2,496	450	12,793	4,884	0.6	26.5
Lao PDR	74,947	105,198	124	546	105,868	71,515	4.6	41.3
Malaysia	69,098	76,983	5,231	230	82,444	28,963	3.6	19.3
Myanmar	2,130	2,948	373	114	3,435	1,434	0.1	61.3
Philippines	46,400	51,286	4,523	928	56,737	34,137	2.4	22.3
Singapore	34,853	34,608	1,723	192	36,523	13,426	1.6	4.8
Thailand	124,191	81,891	8,048	1,404	91,343	31,168	3.9	-26.4
Vietnam	422,885	508,154	5,908	2,317	516,379	226,781	22.3	22.1
<b>Eastern Asia</b>	<b>578,033</b>	<b>623,241</b>	<b>60,403</b>	<b>4,639</b>	<b>688,283</b>	<b>325,474</b>	<b>29.7</b>	<b>19.1</b>
China (RPC)	144,160	161,275	35,884	1,191	198,350	89,916	8.6	37.6
Hong Kong SAR	3,526	4,373	234	9	4,616	2,163	0.2	30.9
Japan	121,877	121,983	4,831	1,786	128,600	59,674	5.5	5.5
Korea (ROK)	230,470	260,590	11,427	1,601	273,618	135,543	11.8	18.7
Mongolia	239	172	11	23	206	109	0.0	-13.8
Taiwan, China	77,761	74,848	8,016	29	82,893	38,069	3.6	6.6
<b>Southern Asia</b>	<b>15,230</b>	<b>12,459</b>	<b>2,747</b>	<b>785</b>	<b>15,991</b>	<b>4,097</b>	<b>0.7</b>	<b>5.0</b>
Afghanistan	166	71	7	24	102	18	0.0	-38.6
Bangladesh	1,422	763	189	105	1,057	112	0.0	-25.7
Bhutan		43	7	22	72	25	0.0	
India	11,018	9,872	1,826	388	12,086	3,372	0.5	9.7
Nepal	847	640	188	85	913	197	0.0	7.8
Pakistan	896	460	332	89	881	169	0.0	-1.7
Srilanka	881	610	198	72	880	204	0.0	-0.1
<b>Western Asia</b>	<b>0</b>	<b>1,505</b>	<b>116</b>	<b>11</b>	<b>1,632</b>	<b>913</b>	<b>0.1</b>	
Kazakhstan		893	93	8	994	464	0.0	
Uzbekistan		612	23	3	638	449	0.0	
<b>Oceania</b>	<b>86,996</b>	<b>88,299</b>	<b>4,821</b>	<b>1,720</b>	<b>94,840</b>	<b>41,103</b>	<b>4.1</b>	<b>9.0</b>
Australia	75,934	76,610	4,101	1,527	82,238	36,140	3.5	8.3
Fiji		63	18	10	91	29	0.0	
New Zealand	11,062	11,626	702	183	12,511	4,934	0.5	13.1
Other Asia & the Pacific	3,357	4,985	128	171	5,284	1,279	0.2	57.4
<b>Europe</b>	<b>370,746</b>	<b>397,474</b>	<b>15,341</b>	<b>7,269</b>	<b>420,084</b>	<b>175,605</b>	<b>18.1</b>	<b>13.3</b>
<b>Northern Europe</b>	<b>117,385</b>	<b>114,404</b>	<b>5,112</b>	<b>1,788</b>	<b>121,304</b>	<b>46,729</b>	<b>5.2</b>	<b>3.3</b>
Denmark	6,398	7,269	277	98	7,644	3,122	0.3	19.5
Finland	4,106	4,620	188	144	4,952	1,857	0.2	20.6
Iceland	199	265	7	2	274	100	0.0	37.7
Ireland	6,951	6,639	231	100	6,970	2,831	0.3	0.3
Norway	6,262	6,184	258	88	6,530	2,634	0.3	4.3
Sweden	10,302	10,563	411	172	11,146	4,253	0.5	8.2
United Kingdom	83,167	78,864	3,740	1,184	83,788	31,932	3.6	0.7
<b>Western Europe</b>	<b>177,184</b>	<b>173,692</b>	<b>8,141</b>	<b>4,405</b>	<b>186,238</b>	<b>75,261</b>	<b>8.0</b>	<b>5.1</b>
Austria	6,193	5,543	141	77	5,761	2,250	0.2	-7.0
Belgium	10,871	10,046	392	275	10,713	4,307	0.5	-1.5
France	84,247	82,675	5,226	2,565	90,466	37,852	3.9	7.4
Germany	45,662	46,188	1,323	977	48,488	18,794	2.1	6.2
Luxembourg	479	378	8	16	402	166	0.0	-16.1
Monaco		67	0	3	70	33	0.0	
Netherlands	18,467	17,080	577	310	17,967	6,972	0.8	-2.7
Switzerland	11,265	11,715	474	182	12,371	4,887	0.5	9.8
<b>Eastern Europe</b>	<b>37,651</b>	<b>65,272</b>	<b>961</b>	<b>307</b>	<b>66,540</b>	<b>35,117</b>	<b>2.9</b>	<b>76.7</b>
Bulgaria	365	314	8	14	336	168	0.0	-7.9
Czech Republic	2,137	2,338	30	15	2,383	1,013	0.1	11.5
Estonia		638	16	12	666	252	0.0	
Hungary	2,202	1,950	54	14	2,018	912	0.1	-8.4
Lithuania		1,011	9	1	1,021	543	0.0	
Poland	5,658	6,239	46	55	6,340	3,193	0.3	12.1
Romania	957	771	18	7	796	437	0.0	-16.8
Russian Federation	23,434	48,202	654	143	48,999	26,544	2.1	109.1
Slovakia	918	900	22	30	952	400	0.0	3.7
Ukraine	1,980	2,909	104	16	3,029	1,655	0.1	53.0

## International Tourist Arrivals to Cambodia by Country of Residence in January - October 2011

(by all mean of transportations)

Regions Country of Residence	2010	2011			Total	Female	share	change
		Purpose of Visit					(%)	(%)
		Tourists	Business	Other			2011*	2011*/10
<b>GRAND TOTAL</b>	<b>2,008,695</b>	<b>2,170,753</b>	<b>120,919</b>	<b>26,307</b>	<b>2,317,979</b>	<b>1,038,971</b>	<b>100.0</b>	<b>15.4</b>
<b>Southern Europe</b>	<b>35,718</b>	<b>39,668</b>	<b>1,038</b>	<b>636</b>	<b>41,342</b>	<b>17,489</b>	<b>1.8</b>	<b>15.7</b>
Croatia	322	346	21	7	374	143	0.0	16.1
Greece	1,141	937	28	11	976	377	0.0	-14.5
Italy	14,652	15,382	450	229	16,061	6,051	0.7	9.6
Portugal	1,928	2,387	40	27	2,454	1,186	0.1	27.3
Serbia		296	10	13	319	131	0.0	
Slovenia	520	585	15	9	609	261	0.0	17.1
Spain	15,619	17,778	291	230	18,299	8,676	0.8	17.2
Turkey	1,536	1,957	183	110	2,250	664	0.1	46.5
Other Europe	2,808	4,438	89	133	4,660	1,009	0.2	66.0
<b>Americas</b>	<b>158,999</b>	<b>160,392</b>	<b>8,275</b>	<b>5,134</b>	<b>173,801</b>	<b>73,940</b>	<b>7.5</b>	<b>9.3</b>
Argentina	1,816	4,527	30	36	4,593	2,350	0.2	152.9
Brazil	1,924	2,779	29	48	2,856	1,395	0.1	48.4
Canada	30,368	31,508	1,515	457	33,480	14,677	1.4	10.2
Chile	1,878	1,943	50	23	2,016	943	0.1	7.3
Colombia	860	1,774	39	19	1,832	891	0.1	113.0
Costa Rica		160	12	6	178	101	0.0	
Ecuador		127	5	3	135	70	0.0	
Mexico	2,571	2,668	49	20	2,737	1,334	0.1	6.5
Peru	352	378	8	16	402	189	0.0	14.2
United States	116,911	111,999	6,468	4,390	122,857	50,904	5.3	5.1
Uruguay	299	488	3	8	499	279	0.0	66.9
Other Americas	2,020	2,041	67	108	2,216	807	0.1	9.7
<b>Africa</b>	<b>3,819</b>	<b>4,219</b>	<b>440</b>	<b>185</b>	<b>4,844</b>	<b>1,705</b>	<b>0.2</b>	<b>26.8</b>
Cameroon	421	336	7	10	353	69	0.0	-16.2
Congo		136	1	6	143	34	0.0	
Ghana	431	346	20	19	385	53	0.0	-10.7
Kenya		181	9	43	233	109	0.0	
Liberia		318	3	0	321	64	0.0	
Nigeria	659	202	216	15	433	59	0.0	-34.3
Sudan	33	27	1	4	32	12	0.0	-3.0
South Africa	1,959	2,186	168	29	2,383	994	0.1	21.6
Uganda		264	3	11	278	199	0.0	
Other Africa	316	223	12	48	283	112	0.0	-10.4
<b>Middle East</b>	<b>6,493</b>	<b>6,992</b>	<b>207</b>	<b>118</b>	<b>7,317</b>	<b>2,397</b>	<b>0.3</b>	<b>12.7</b>
Egypt	174	125	11	21	157	29	0.0	-9.8
Iran	442	581	12	4	597	96	0.0	35.1
Iraq		60	3	12	75	16	0.0	
Israel	5,170	5,184	162	33	5,379	2,097	0.2	4.0
Kuwait	443	458	0	1	459	12	0.0	3.6
Oman		92	0	5	97	10	0.0	
Palestine		25	3	0	28	3	0.0	
Qatar		56	1	0	57	23	0.0	
Saudi Arabia	58	53	4	4	61	19	0.0	5.2
United Arab Emirates		136	0	1	137	15	0.0	
Yemen		69	6	5	80	12	0.0	
Other Middle East	206	153	5	32	190	65	0.0	-7.8

### Remark:

- Cambodian Overseas:	63,422
- Cambodian Residence:	524,528
- Cambodian outbound tourist departures:	573,439
- International outbound tourist departures:	2,303,885

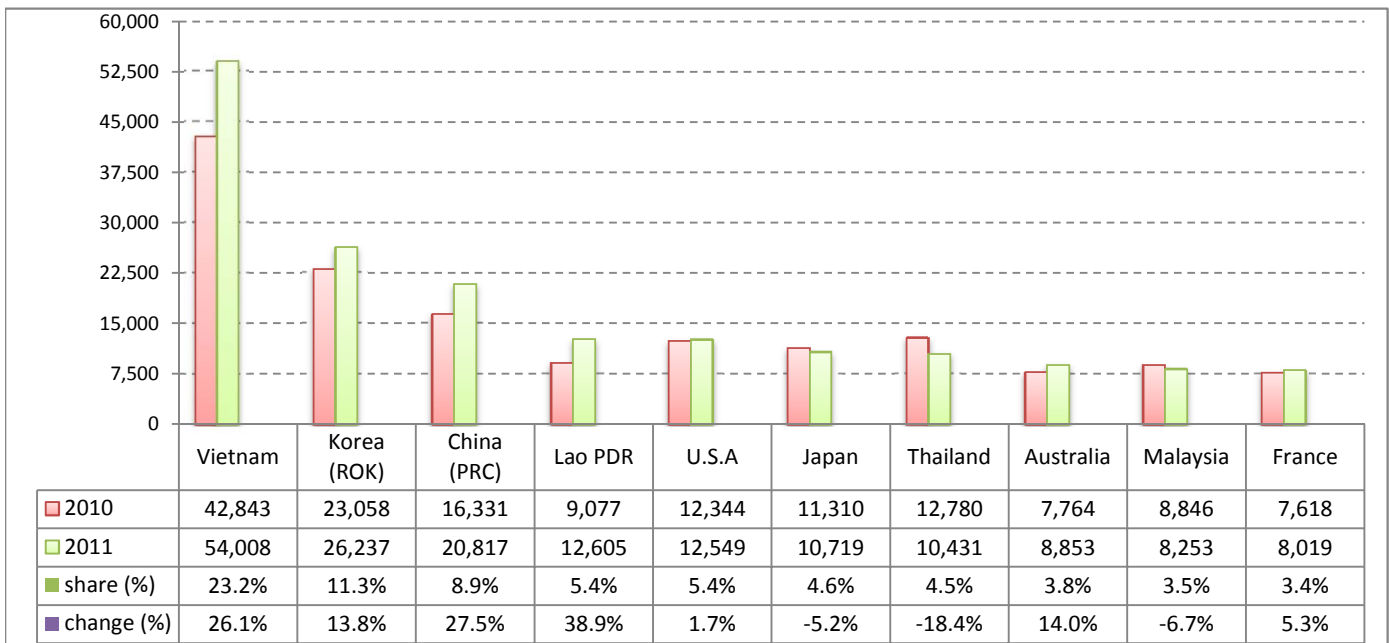
## Executive Summary Report in October 2011

I. International tourist arrivals to Cambodia in October was: **233,190**

### II. Mode of arrivals

	visitors	share (%)
<b>Air</b>	<b>118,822</b>	<b>51.0</b>
Phnom Penh Int'l Airport	53,459	22.9
Siem Reap Int'l Airport	65,363	28.0
<b>Land and Water ways</b>	<b>114,368</b>	<b>49.0</b>
Land	108,501	46.5
Water ways	5,867	2.5
<b>Total</b>	<b>233,190</b>	<b>100.0</b>

### III. Top ten markets arrivals in October 2011



### IV. International tourist arrivals to Cambodia in October 2011

	Inbound		share (%)		change (%)
	2010	2011	2010	2011	2011*/10
<b>Air</b>	<b>107,801</b>	<b>118,822</b>	<b>52.5</b>	<b>51.0</b>	<b>10.2</b>
Phnom Penh Int'l Airport	49,353	53,459	24.0	22.9	8.3
Siem Reap Int'l Airport	58,448	65,363	28.4	28.0	11.8
<b>Land and Water ways</b>	<b>97,714</b>	<b>114,368</b>	<b>47.5</b>	<b>49.0</b>	<b>17.0</b>
Land	91,700	108,501	44.6	46.5	18.3
Water ways	6,014	5,867	2.9	2.5	-2.4
<b>Total</b>	<b>205,515</b>	<b>233,190</b>	<b>100.0</b>	<b>100.0</b>	<b>13.5</b>

### V. Remark: Percentage share of international tourist arrivals at destinations in October 2011

	Arrivals		share (%)		change (%)
	2010	2011	2010	2011	2011*/10
Phnom Penh & Other Destinations	97,274	110,740	47.3	47.5	13.8
Siem Reap Province	108,241	122,450	52.7	52.5	13.1
<b>Total</b>	<b>205,515</b>	<b>233,190</b>	<b>100.0</b>	<b>100.0</b>	<b>13.5</b>

### VI. Outbound tourists departures in October 2011

	Outbound		change (%)
	2010	2011	2011*/10
Cambodian outbound tourists	49,932	64,256	28.7
International outbound tourists	188,208	220,797	17.3

## International Tourist Arrivals to Cambodia by Country of Residence in October 2011

(by all mean of transportations)

Regions Country of Residence	2010	2011			Total	Female	share	change
		Purpose of Visit					(%)	(%)
		Tourists	Business	Other			2011*	2011*/10
<b>GRAND TOTAL</b>	<b>205,515</b>	<b>218,202</b>	<b>12,377</b>	<b>2,611</b>	<b>233,190</b>	<b>104,577</b>	<b>100.0</b>	<b>13.5</b>
<b>Asia and the Pacific</b>	<b>153,108</b>	<b>165,565</b>	<b>9,710</b>	<b>1,355</b>	<b>176,630</b>	<b>80,339</b>	<b>75.7</b>	<b>15.4</b>
<b>ASEAN</b>	<b>83,747</b>	<b>94,709</b>	<b>2,788</b>	<b>611</b>	<b>98,108</b>	<b>44,153</b>	<b>42.1</b>	<b>17.1</b>
Brunei Darussalam	38	17	3	5	25	5	0.0	-34.2
Indonesia	1,030	1,131	252	16	1,399	492	0.6	35.8
Lao PDR	9,655	12,537	12	56	12,605	8,721	5.4	30.6
Malaysia	8,268	7,752	480	21	8,253	2,895	3.5	-0.2
Myanmar	205	341	39	24	404	147	0.2	97.1
Philippines	5,162	6,909	481	97	7,487	4,626	3.2	45.0
Singapore	3,766	3,339	148	9	3,496	1,113	1.5	-7.2
Thailand	12,780	9,524	770	137	10,431	4,079	4.5	-18.4
Vietnam	42,843	53,159	603	246	54,008	22,075	23.2	26.1
<b>Eastern Asia</b>	<b>58,238</b>	<b>59,798</b>	<b>6,103</b>	<b>484</b>	<b>66,385</b>	<b>31,158</b>	<b>28.5</b>	<b>14.0</b>
China (RPC)	16,331	17,181	3,460	176	20,817	9,421	8.9	27.5
Hong Kong SAR	304	563	30	0	593	306	0.3	95.1
Japan	11,310	9,960	588	171	10,719	4,899	4.6	-5.2
Korea (ROK)	23,058	25,024	1,086	127	26,237	12,942	11.3	13.8
Mongolia	19	17	1	1	19	11	0.0	0.0
Taiwan, China	7,216	7,053	938	9	8,000	3,579	3.4	10.9
<b>Southern Asia</b>	<b>1,844</b>	<b>1,406</b>	<b>264</b>	<b>67</b>	<b>1,737</b>	<b>476</b>	<b>0.7</b>	<b>-5.8</b>
Afghanistan	7	0	0	3	3	1	0.0	-57.1
Bangladesh	126	61	22	9	92	9	0.0	-27.0
Bhutan		4	1	1	6	3	0.0	
India	1,372	1,159	160	31	1,350	405	0.6	-1.6
Nepal	118	101	14	9	124	22	0.1	5.1
Pakistan	136	43	39	8	90	18	0.0	-33.8
Srilanka	85	38	28	6	72	18	0.0	-15.3
<b>Western Asia</b>	<b>0</b>	<b>111</b>	<b>9</b>	<b>1</b>	<b>121</b>	<b>72</b>	<b>0.1</b>	
Kazakhstan		66	8	1	75	35	0.0	
Uzbekistan		45	1	0	46	37	0.0	
<b>Oceania</b>	<b>9,002</b>	<b>9,425</b>	<b>538</b>	<b>178</b>	<b>10,141</b>	<b>4,413</b>	<b>4.3</b>	<b>12.7</b>
Australia	7,764	8,246	451	156	8,853	3,910	3.8	14.0
Fiji		4	1	1	6	3	0.0	
New Zealand	1,238	1,175	86	21	1,282	500	0.5	3.6
Other Asia & the Pacific	277	116	8	14	138	67	0.1	-50.2
<b>Europe</b>	<b>35,127</b>	<b>35,815</b>	<b>1,671</b>	<b>721</b>	<b>38,207</b>	<b>16,455</b>	<b>16.4</b>	<b>8.8</b>
<b>Northern Europe</b>	<b>10,040</b>	<b>10,069</b>	<b>605</b>	<b>178</b>	<b>10,852</b>	<b>4,271</b>	<b>4.7</b>	<b>8.1</b>
Denmark	477	600	33	5	638	276	0.3	33.8
Finland	303	279	24	12	315	132	0.1	4.0
Iceland	11	16	1	0	17	8	0.0	54.5
Ireland	684	663	29	10	702	305	0.3	2.6
Norway	501	439	32	12	483	184	0.2	-3.6
Sweden	661	837	61	19	917	357	0.4	38.7
United Kingdom	7,403	7,235	425	120	7,780	3,009	3.3	5.1
<b>Western Europe</b>	<b>16,972</b>	<b>15,240</b>	<b>845</b>	<b>442</b>	<b>16,527</b>	<b>6,479</b>	<b>7.1</b>	<b>-2.6</b>
Austria	440	427	25	3	455	190	0.2	3.4
Belgium	1,066	860	41	24	925	358	0.4	-13.2
France	7,618	7,223	513	283	8,019	3,138	3.4	5.3
Germany	4,693	4,180	150	85	4,415	1,758	1.9	-5.9
Luxembourg	33	36	0	1	37	14	0.0	12.1
Monaco		12	0	0	12	8	0.0	
Netherlands	1,945	1,590	64	33	1,687	621	0.7	-13.3
Switzerland	1,177	912	52	13	977	392	0.4	-17.0
<b>Eastern Europe</b>	<b>4,471</b>	<b>6,282</b>	<b>95</b>	<b>27</b>	<b>6,404</b>	<b>3,720</b>	<b>2.7</b>	<b>43.2</b>
Bulgaria	33	53	2	4	59	28	0.0	78.8
Czech Republic	164	161	2	5	168	78	0.1	2.4
Estonia		38	2	1	41	16	0.0	
Hungary	174	143	1	2	146	56	0.1	-16.1
Lithuania		47	2	0	49	25	0.0	
Poland	579	682	6	3	691	340	0.3	19.3
Romania	49	106	3	0	109	66	0.0	122.4
Russian Federation	3,091	4,734	63	8	4,805	2,970	2.1	55.5
Slovakia	184	82	1	2	85	31	0.0	-53.8
Ukraine	197	236	13	2	251	110	0.1	27.4

Source: Statistics and ICT Department, MOT

## International Tourist Arrivals to Cambodia by Country of Residence in October 2011

(by all mean of transportations)

Regions Country of Residence	2010		2011			share		change	
			Purpose of Visit			Total	Female	(%)	(%)
			Tourists	Business	Other			2011*	2011*/10
<b>GRAND TOTAL</b>	<b>205,515</b>	<b>218,202</b>	<b>12,377</b>	<b>2,611</b>	<b>233,190</b>	<b>104,577</b>	<b>100.0</b>	<b>13.5</b>	
<b>Southern Europe</b>	<b>3,399</b>	<b>4,138</b>	<b>120</b>	<b>63</b>	<b>4,321</b>	<b>1,942</b>	<b>1.9</b>	<b>27.1</b>	
Croatia	20	53	0	0	53	25	0.0	165.0	
Greece	60	97	5	4	106	51	0.0	76.7	
Italy	895	961	55	24	1,040	365	0.4	16.2	
Portugal	263	305	7	2	314	167	0.1	19.4	
Serbia		29	3	1	33	11	0.0		
Slovenia	52	75	4	4	83	39	0.0	59.6	
Spain	1,988	2,499	40	26	2,565	1,254	1.1	29.0	
Turkey	121	119	6	2	127	30	0.1	5.0	
Other Europe	245	86	6	11	103	43	0.0	-58.0	
<b>Americas</b>	<b>16,419</b>	<b>15,581</b>	<b>922</b>	<b>510</b>	<b>17,013</b>	<b>7,308</b>	<b>7.3</b>	<b>3.6</b>	
Argentina	173	181	9	4	194	92	0.1	12.1	
Brazil	224	361	4	3	368	207	0.2	64.3	
Canada	2,857	2,950	142	55	3,147	1,358	1.3	10.2	
Chile	116	158	2	2	162	77	0.1	39.7	
Colombia	102	91	3	3	97	51	0.0	-4.9	
Costa Rica		9	2	0	11	3	0.0		
Ecuador		14	0	0	14	6	0.0		
Mexico	325	332	8	2	342	186	0.1	5.2	
Peru	40	41	2	0	43	28	0.0	7.5	
United States	12,344	11,372	745	432	12,549	5,260	5.4	1.7	
Uruguay	18	5	0	0	5	2	0.0		
Other Americas	220	67	5	9	81	38	0.0	-63.2	
<b>Africa</b>	<b>362</b>	<b>353</b>	<b>45</b>	<b>17</b>	<b>415</b>	<b>142</b>	<b>0.2</b>	<b>14.6</b>	
Cameroon	30	17	1	0	18	4	0.0	-40.0	
Congo		12	0	1	13	8	0.0		
Ghana	41	23	4	1	28	4	0.0	-31.7	
Kenya		20	1	8	29	16	0.0		
Liberia		5	0	0	5	2	0.0		
Nigeria	63	22	15	0	37	5	0.0	-41.3	
Sudan	4	3	0	1	4	0	0.0	0.0	
South Africa	202	237	22	0	259	98	0.1	28.2	
Uganda		1	0	2	3	1	0.0		
Other Africa	22	13	2	4	19	4	0.0	-13.6	
<b>Middle East</b>	<b>499</b>	<b>888</b>	<b>29</b>	<b>8</b>	<b>925</b>	<b>333</b>	<b>0.4</b>	<b>85.4</b>	
Egypt	9	19	1	3	23	3	0.0	155.6	
Iran	45	58	2	0	60	14	0.0	33.3	
Iraq		2	0	0	2	0	0.0		
Israel	398	734	22	2	758	304	0.3	90.5	
Kuwait	31	38	0	0	38	4	0.0	22.6	
Oman		8	0	0	8	0	0.0		
Palestine		3	1	0	4	0	0.0		
Qatar		2	1	0	3	0	0.0		
Saudi Arabia	4	10	1	0	11	5	0.0	175.0	
United Arab Emirates		3	0	0	3	0	0.0		
Yemen		3	0	0	3	0	0.0		
Other Middle East	12	8	1	3	12	3	0.0	0.0	

### Remark:

- Cambodian Overseas:	6,206
- Cambodian Residence:	62,114
- Cambodian outbound tourist departures:	64,256
- International outbound tourist departures:	220,797



**COMPILED BY:**

1. Mr. Kong Sopheareak

Director  
Statistics & Tourism Information Department  
Fax: +855 23 885003  
E-mail: kong@mot.gov.kh

2. Mr. Horth Vanny

Chief of Tourism Statistics Office  
Compile and data analysis  
Tel.: +855 12 827664