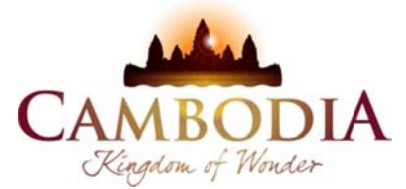




KINGDOM OF CAMBODIA
NATION RELIGION KING



TOURISM STATISTICS REPORT

July 2011

MINISTRY OF TOURISM

Statistics and Tourism Information Department

No. A3, Street 169, Sangkat Veal Vong, Khan 7 Makara, Phnom Penh, Cambodia.

Fax: +855 23 885003

E-mail: kong@mot.gov.kh

Web site: www.mot.gov.kh

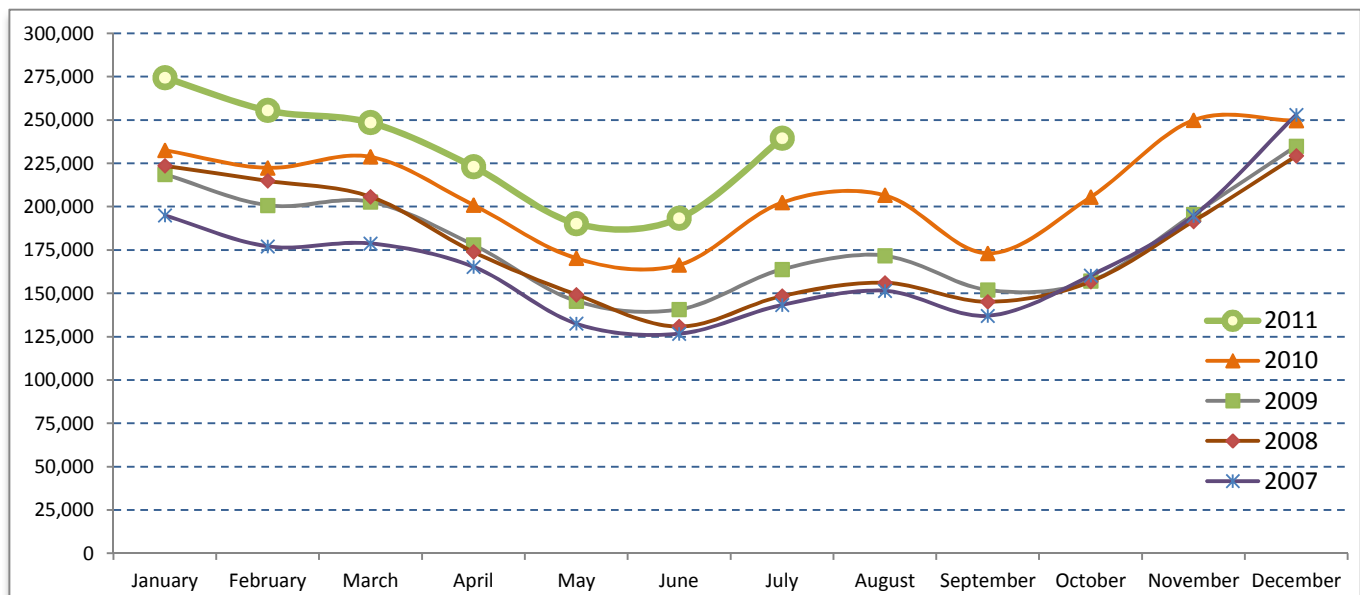
Tourism Highlights

International Tourist Arrivals, Average Length of Stay, Hotels Occupancy & Tourism Receipts 1993 - 2010

Years	Tourist Arrivals		Average Length	Hotels Occupancy	Tourism Receipts
	number	change (%)	of Stay (days)	(%)	(million US\$)
1993	118,183	-	N/A	N/A	N/A
1994	176,617	49.4%	N/A	N/A	N/A
1995	219,680	24.4%	8.00	37.00	100
1996	260,489	18.6%	7.50	40.00	118
1997	218,843	-16.0%	6.40	30.00	103
1998	289,524	32.3%	5.20	40.00	166
1999	367,743	27.0%	5.50	44.00	190
2000	466,365	26.8%	5.50	45.00	228
2001	604,919	29.7%	5.50	48.00	304
2002	786,524	30.0%	5.80	50.00	379
2003	701,014	-10.9%	5.50	50.00	347
2004	1,055,202	50.5%	6.30	52.00	578
2005	1,421,615	34.7%	6.30	52.00	832
2006	1,700,041	19.6%	6.50	54.79	1,049
2007	2,015,128	18.5%	6.50	54.79	1,400
2008	2,125,465	5.5%	6.65	62.68	1,595
2009	2,161,577	1.7%	6.45	63.57	1,561
2010	2,508,289	16.0%	6.45	65.74	1,786

International tourist arrivals to Cambodia

Destination	Months	2007	2008	2009	2010	2011	change (%) 2011*/10
Cambodia	Q1	550,813	644,205	622,288	683,692	778,467	13.9
<i>International tourist arrivals</i>	January	194,932	223,581	218,691	232,590	274,471	18.0
<i>by all means of</i>	February	177,130	214,902	200,789	222,354	255,499	14.9
<i>transportations</i>	March	178,751	205,722	202,808	228,748	248,497	8.6
	Q2	424,536	454,031	464,230	537,464	606,562	12.9
	April	165,347	173,903	177,955	200,965	223,032	11.0
	May	132,512	149,275	145,564	170,164	190,258	11.8
	June	126,677	130,853	140,711	166,335	193,272	16.2
	Q3	431,815	449,693	487,422	582,024	239,527	
	July	143,310	148,449	163,817	202,349	239,527	18.4
	August	151,478	156,098	171,668	206,563		
	September	137,027	145,146	151,937	173,112		
	Q4	607,964	577,536	587,637	705,109	0	
	October	160,235	156,718	157,105	205,515		
	November	194,646	191,549	195,570	249,892		
	December	253,083	229,269	234,962	249,702		
	Total	2,015,128	2,125,465	2,161,577	2,508,289	1,624,556	14.1%



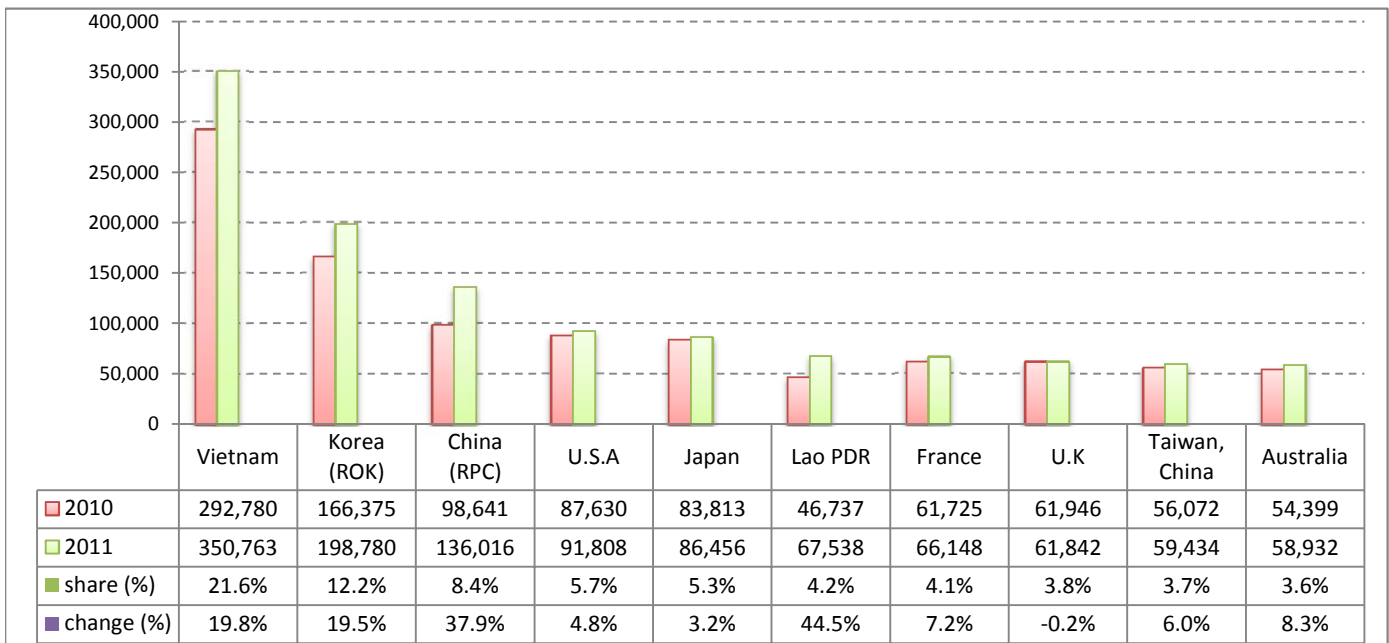
Executive Summary Report in the First Seven Months of 2011

I. International tourist arrivals to Cambodia in January - July was: **1,624,556**

II. Mode of arrivals

	visitors	share (%)
Air	830,715	51.1
Phnom Penh Int'l Airport	367,339	22.6
Siem Reap Int'l Airport	463,376	28.5
Land and Water ways	793,841	48.9
Land	745,913	45.9
Water ways	47,928	3.0
Total	1,624,556	100.0

III. Top ten markets arrivals in January - July 2011



IV. International tourist arrivals to Cambodia in January - July 2011

	Inbound		share (%)		change (%)
	2010	2011	2010	2011	2011*/10
Air	729,930	830,715	51.3	51.1	13.8
Phnom Penh Int'l Airport	334,510	367,339	23.5	22.6	9.8
Siem Reap Int'l Airport	395,420	463,376	27.8	28.5	17.2
Land and Water ways	693,575	793,841	48.7	48.9	14.5
Land	647,806	745,913	45.5	45.9	15.1
Water ways	45,769	47,928	3.2	3.0	4.7
Total	1,423,505	1,624,556	100.0	100.0	14.1

V. Remark: Percentage share of international tourist arrivals at destinations in January - July 2011

	Arrivals		share (%)		change (%)
	2010	2011	2010	2011	2011*/10
Phnom Penh & Other Destinations	687,134	717,093	48.3	44.1	4.4
Siem Reap Province	736,371	907,463	51.7	55.9	23.2
Total	1,423,505	1,624,556	100.0	100.0	14.1

VI. Outbound tourists departures in January - July 2011

	Outbound		change (%)
	2010	2011	2011*/10
Cambodian outbound tourists	276,607	357,048	29.1
International outbound tourists	1,339,461	1,609,601	20.2

International Tourist Arrivals to Cambodia by Country of Residence in January - July 2011

(by all mean of transportations)

Regions Country of Residence	2010	2011			Total	Female	share	change
		Purpose of Visit					(%)	(%)
		Tourists	Business	Other			2011*	2011*/10
GRAND TOTAL	1,423,505	1,522,090	84,168	18,298	1,624,556	725,584	100.0	14.1
Asia and the Pacific	1,021,829	1,097,646	67,409	9,492	1,174,547	537,744	72.3	14.9
ASEAN	539,603	580,718	20,466	4,444	605,628	275,798	37.3	12.2
Brunei Darussalam	317	202	11	69	282	113	0.0	-11.0
Indonesia	6,766	6,391	1,755	259	8,405	3,268	0.5	24.2
Lao PDR	46,737	67,088	96	354	67,538	44,852	4.2	44.5
Malaysia	45,366	53,293	3,770	176	57,239	20,118	3.5	26.2
Myanmar	1,431	2,158	257	73	2,488	1,062	0.2	73.9
Philippines	32,546	33,245	3,155	622	37,022	22,181	2.3	13.8
Singapore	24,724	24,658	1,231	166	26,055	9,933	1.6	5.4
Thailand	88,936	49,084	5,860	892	55,836	18,569	3.4	-37.2
Vietnam	292,780	344,599	4,331	1,833	350,763	155,702	21.6	19.8
Eastern Asia	407,658	439,312	41,609	3,102	484,023	227,788	29.8	18.7
China (RPC)	98,641	110,706	24,581	729	136,016	61,518	8.4	37.9
Hong Kong SAR	2,577	3,016	157	7	3,180	1,461	0.2	23.4
Japan	83,813	82,113	3,141	1,202	86,456	39,851	5.3	3.2
Korea (ROK)	166,375	189,595	8,056	1,129	198,780	97,431	12.2	19.5
Mongolia	180	132	9	16	157	84	0.0	-12.8
Taiwan, China	56,072	53,750	5,665	19	59,434	27,443	3.7	6.0
Southern Asia	10,008	8,423	1,820	568	10,811	2,800	0.7	8.0
Afghanistan	149	66	6	9	81	17	0.0	-45.6
Bangladesh	841	507	121	84	712	81	0.0	-15.3
Bhutan		33	2	17	52	17	0.0	
India	7,321	6,660	1,200	277	8,137	2,295	0.5	11.1
Nepal	562	416	143	59	618	146	0.0	10.0
Pakistan	576	328	223	69	620	126	0.0	7.6
Srilanka	559	413	125	53	591	118	0.0	5.7
Western Asia	0	1,193	80	10	1,283	697	0.1	
Kazakhstan		744	65	7	816	374	0.1	
Uzbekistan		449	15	3	467	323	0.0	
Oceania	62,193	63,553	3,342	1,259	68,154	29,696	4.2	9.6
Australia	54,399	54,964	2,840	1,128	58,932	26,025	3.6	8.3
Fiji		50	16	8	74	23	0.0	
New Zealand	7,794	8,539	486	123	9,148	3,648	0.6	17.4
Other Asia & the Pacific	2,367	4,447	92	109	4,648	965	0.3	96.4
Europe	274,111	295,434	10,507	5,109	311,050	129,365	19.1	13.5
Northern Europe	89,880	87,417	3,491	1,281	92,189	35,582	5.7	2.6
Denmark	5,263	6,032	197	77	6,306	2,621	0.4	19.8
Finland	3,437	3,932	131	110	4,173	1,522	0.3	21.4
Iceland	161	224	6	0	230	81	0.0	42.9
Ireland	5,029	4,643	159	69	4,871	1,907	0.3	-3.1
Norway	5,160	5,209	187	62	5,458	2,245	0.3	5.8
Sweden	8,884	8,909	280	120	9,309	3,617	0.6	4.8
United Kingdom	61,946	58,468	2,531	843	61,842	23,589	3.8	-0.2
Western Europe	132,077	130,337	5,582	3,073	138,992	56,334	8.6	5.2
Austria	4,988	4,363	87	56	4,506	1,743	0.3	-9.7
Belgium	8,138	7,605	265	182	8,052	3,249	0.5	-1.1
France	61,725	60,824	3,590	1,734	66,148	27,833	4.1	7.2
Germany	34,821	35,613	911	716	37,240	14,454	2.3	6.9
Luxembourg	354	266	7	15	288	117	0.0	-18.6
Monaco		53	0	3	56	23	0.0	
Netherlands	13,244	12,213	395	229	12,837	4,985	0.8	-3.1
Switzerland	8,807	9,400	327	138	9,865	3,930	0.6	12.0
Eastern Europe	28,682	50,718	685	203	51,606	26,982	3.2	79.9
Bulgaria	287	223	5	9	237	122	0.0	-17.4
Czech Republic	1,771	1,921	26	7	1,954	822	0.1	10.3
Estonia		566	11	9	586	221	0.0	
Hungary	1,911	1,683	50	8	1,741	792	0.1	-8.9
Lithuania		917	6	1	924	493	0.1	
Poland	4,345	4,678	33	45	4,756	2,433	0.3	9.5
Romania	830	588	11	7	606	326	0.0	-27.0
Russian Federation	17,432	37,255	463	81	37,799	20,178	2.3	116.8
Slovakia	630	712	12	24	748	326	0.0	18.7
Ukraine	1,476	2,175	68	12	2,255	1,269	0.1	52.8

International Tourist Arrivals to Cambodia by Country of Residence in January - July 2011

(by all mean of transportations)

Regions Country of Residence	2010		2011			share		change	
			Purpose of Visit			Total	Female	(%)	(%)
			Tourists	Business	Other			2011*	2011*/10
GRAND TOTAL	1,423,505	1,522,090	84,168	18,298	1,624,556	725,584	100.0	14.1	
Southern Europe	21,524	22,955	683	471	24,109	9,674	1.5	12.0	
Croatia	265	250	19	7	276	98	0.0	4.2	
Greece	888	672	20	7	699	263	0.0	-21.3	
Italy	9,877	10,358	309	167	10,834	3,972	0.7	9.7	
Portugal	1,225	1,421	22	23	1,466	711	0.1	19.7	
Serbia		231	5	9	245	107	0.0		
Slovenia	406	438	7	4	449	193	0.0	10.6	
Spain	7,763	8,123	204	160	8,487	3,821	0.5	9.3	
Turkey	1,100	1,462	97	94	1,653	509	0.1	50.3	
Other Europe	1,948	4,007	66	81	4,154	793	0.3	113.2	
Americas	119,982	120,949	5,818	3,499	130,266	55,597	8.0	8.6	
Argentina	1,320	2,084	8	28	2,120	1,054	0.1	60.6	
Brazil	1,415	2,036	21	39	2,096	1,003	0.1	48.1	
Canada	24,128	24,898	1,111	318	26,327	11,649	1.6	9.1	
Chile	1,260	1,506	45	18	1,569	735	0.1	24.5	
Colombia	611	1,511	22	14	1,547	765	0.1	153.2	
Costa Rica		128	9	5	142	84	0.0		
Ecuador		93	4	2	99	55	0.0		
Mexico	1,869	1,911	33	15	1,959	944	0.1	4.8	
Peru	232	264	4	10	278	128	0.0	19.8	
United States	87,630	84,325	4,507	2,976	91,808	38,281	5.7	4.8	
Uruguay	270	402	3	8	413	240	0.0	53.0	
Other Americas	1,247	1,791	51	66	1,908	659	0.1	53.0	
Africa	2,715	3,108	304	118	3,530	1,226	0.2	30.0	
Cameroon	322	269	4	8	281	57	0.0	-12.7	
Congo		104	0	5	109	24	0.0		
Ghana	317	279	14	11	304	40	0.0	-4.1	
Kenya		133	6	24	163	79	0.0		
Liberia		289	3	0	292	59	0.0		
Nigeria	473	135	167	10	312	44	0.0	-34.0	
Sudan	25	20	1	2	23	11	0.0	-8.0	
South Africa	1,341	1,500	101	20	1,621	679	0.1	20.9	
Uganda		197	0	9	206	150	0.0		
Other Africa	237	182	8	29	219	83	0.0	-7.6	
Middle East	4,868	4,953	130	80	5,163	1,652	0.3	6.1	
Egypt	138	67	5	16	88	19	0.0	-36.2	
Iran	288	404	8	4	416	62	0.0	44.4	
Iraq		41	3	9	53	13	0.0		
Israel	3,905	3,629	101	18	3,748	1,437	0.2	-4.0	
Kuwait	340	360	0	0	360	6	0.0	5.9	
Oman		66	0	5	71	10	0.0		
Palestine		19	1	0	20	2	0.0		
Qatar		50	0	0	50	22	0.0		
Saudi Arabia	41	38	3	4	45	11	0.0	9.8	
United Arab Emirates		91	0	1	92	10	0.0		
Yemen		60	6	4	70	10	0.0		
Other Middle East	156	128	3	19	150	50	0.0	-3.8	

Remark:

- Cambodian Overseas:	45,804
- Cambodian Residence:	319,404
- Cambodian outbound tourist departures:	357,048
- International outbound tourist departures:	1,609,601

Executive Summary Report in July 2011

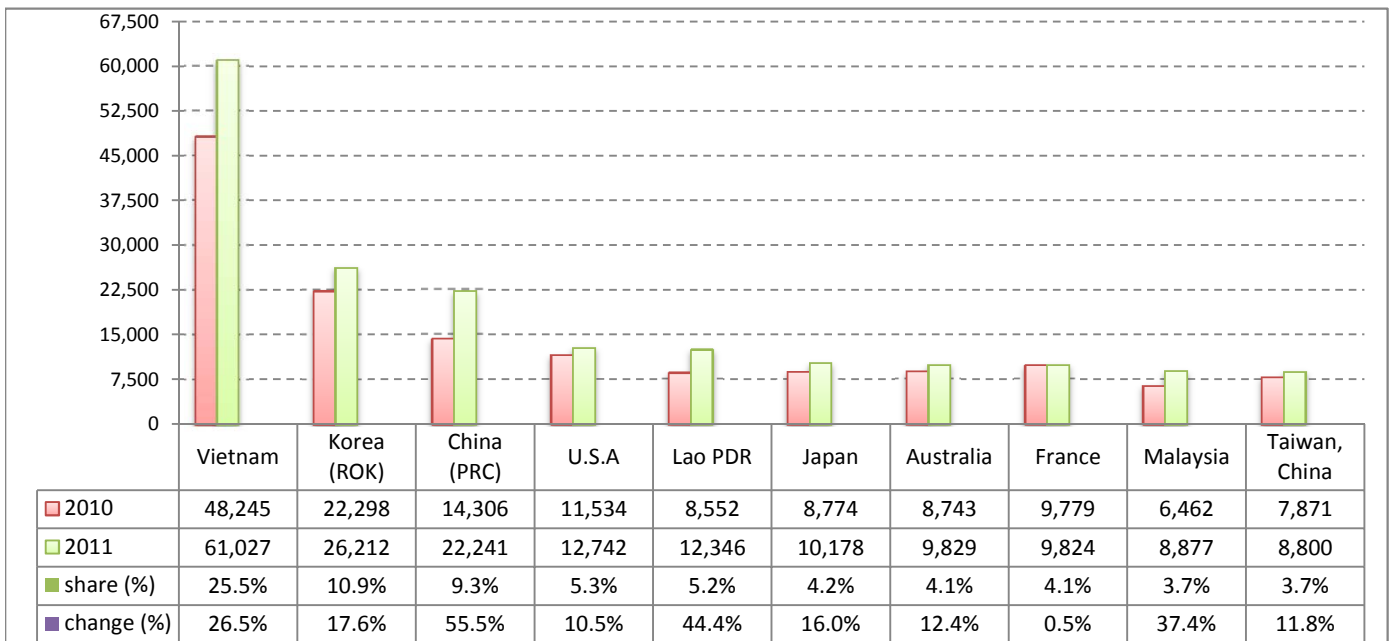
I. International tourist arrivals to Cambodia in July was:

239,527

II. Mode of arrivals

	visitors	share (%)
Air	116,342	48.6
Phnom Penh Int'l Airport	56,875	23.7
Siem Reap Int'l Airport	59,467	24.8
Land and Water ways	123,185	51.4
Land	116,376	48.6
Water ways	6,809	2.8
Total	239,527	100.0

III. Top ten markets arrivals in July 2011



IV. International tourist arrivals to Cambodia in July 2011

	Inbound		share (%)		change (%)
	2010	2011	2010	2011	2011*/10
Air	97,557	116,342	48.2	48.6	19.3
Phnom Penh Int'l Airport	49,519	56,875	24.5	23.7	14.9
Siem Reap Int'l Airport	48,038	59,467	23.7	24.8	23.8
Land and Water ways	104,792	123,185	51.8	51.4	17.6
Land	98,470	116,376	48.7	48.6	18.2
Water ways	6,322	6,809	3.1	2.8	7.7
Total	202,349	239,527	100.0	100.0	18.4

V. Remark: Percentage share of international tourist arrivals at destinations in July 2011

	Arrivals		share (%)		change (%)
	2010	2011	2010	2011	2011*/10
Phnom Penh & Other Destinations	106,922	116,573	52.8	48.7	9.0
Siem Reap Province	95,427	122,954	47.2	51.3	28.8
Total	202,349	239,527	100.0	100.0	18.4

VI. Outbound tourists departures in July 2011

	Outbound		change (%)
	2010	2011	2011*/10
Cambodian outbound tourists	44,290	64,015	44.5
International outbound tourists	185,426	230,580	24.4

International Tourist Arrivals to Cambodia by Country of Residence in July 2011

(by all mean of transportations)

Regions Country of Residence	2010		2011			share		change
		Purpose of Visit	Total	Female	share (%)	change (%)		
							Tourists	Business
GRAND TOTAL	202,349	224,835	12,115	2,577	239,527	110,999	100.0	18.4
Asia and the Pacific	151,225	171,660	9,578	1,355	182,593	86,710	76.2	20.7
ASEAN	85,713	97,820	2,915	692	101,427	46,101	42.3	18.3
Brunei Darussalam	100	38	3	10	51	22	0.0	-49.0
Indonesia	1,068	952	212	24	1,188	471	0.5	11.2
Lao PDR	8,552	12,250	10	86	12,346	8,657	5.2	44.4
Malaysia	6,462	8,262	593	22	8,877	3,178	3.7	37.4
Myanmar	205	208	34	16	258	94	0.1	25.9
Philippines	4,624	5,561	433	96	6,090	3,652	2.5	31.7
Singapore	3,216	3,674	197	19	3,890	1,270	1.6	21.0
Thailand	13,241	6,821	779	100	7,700	2,376	3.2	-41.8
Vietnam	48,245	60,054	654	319	61,027	26,381	25.5	26.5
Eastern Asia	53,757	61,554	5,888	412	67,854	34,840	28.3	26.2
China (RPC)	14,306	18,874	3,300	67	22,241	11,273	9.3	55.5
Hong Kong SAR	446	384	19	0	403	194	0.2	-9.6
Japan	8,774	9,478	528	172	10,178	5,030	4.2	16.0
Korea (ROK)	22,298	24,739	1,315	158	26,212	13,940	10.9	17.6
Mongolia	62	14	2	4	20	10	0.0	-67.7
Taiwan, China	7,871	8,065	724	11	8,800	4,393	3.7	11.8
Southern Asia	1,584	1,152	272	83	1,507	379	0.6	-4.9
Afghanistan	6	5	1	1	7	0	0.0	16.7
Bangladesh	218	75	15	10	100	8	0.0	-54.1
Bhutan		12	0	1	13	2	0.0	
India	1,083	883	190	45	1,118	317	0.5	3.2
Nepal	90	65	17	12	94	22	0.0	4.4
Pakistan	119	44	27	8	79	18	0.0	-33.6
Srilanka	68	68	22	6	96	12	0.0	41.2
Western Asia	0	112	15	1	128	78	0.1	
Kazakhstan		41	12	1	54	22	0.0	
Uzbekistan		71	3	0	74	56	0.0	
Oceania	9,974	10,809	465	149	11,423	5,238	4.8	14.5
Australia	8,743	9,301	390	138	9,829	4,591	4.1	12.4
Fiji		2	1	0	3	0	0.0	
New Zealand	1,231	1,506	74	11	1,591	647	0.7	29.2
Other Asia & the Pacific	197	213	23	18	254	74	0.1	28.9
Europe	35,134	36,394	1,574	676	38,644	16,468	16.1	10.0
Northern Europe	11,140	11,902	564	173	12,639	5,213	5.3	13.5
Denmark	703	1,050	37	12	1,099	467	0.5	56.3
Finland	169	330	20	12	362	140	0.2	114.2
Iceland	12	33	1	0	34	13	0.0	183.3
Ireland	1,059	1,067	26	12	1,105	577	0.5	4.3
Norway	565	665	22	11	698	277	0.3	23.5
Sweden	620	617	34	28	679	253	0.3	9.5
United Kingdom	8,012	8,140	424	98	8,662	3,486	3.6	8.1
Western Europe	18,527	17,034	788	412	18,234	7,642	7.6	-1.6
Austria	537	510	5	7	522	242	0.2	-2.8
Belgium	1,663	1,597	40	25	1,662	769	0.7	-0.1
France	9,779	9,123	486	215	9,824	4,209	4.1	0.5
Germany	2,795	2,598	144	99	2,841	1,033	1.2	1.6
Luxembourg	34	28	0	2	30	14	0.0	-11.8
Monaco		18	0	0	18	7	0.0	
Netherlands	2,490	2,158	72	50	2,280	934	1.0	-8.4
Switzerland	1,229	1,002	41	14	1,057	434	0.4	-14.0
Eastern Europe	1,971	3,325	92	21	3,438	1,782	1.4	74.4
Bulgaria	13	12	1	1	14	5	0.0	7.7
Czech Republic	89	160	4	0	164	60	0.1	84.3
Estonia		20	0	1	21	5	0.0	
Hungary	70	118	3	0	121	53	0.1	72.9
Lithuania		14	0	0	14	10	0.0	
Poland	344	324	2	6	332	179	0.1	-3.5
Romania	40	58	1	0	59	35	0.0	47.5
Russian Federation	1,266	2,426	65	11	2,502	1,341	1.0	97.6
Slovakia	53	54	1	2	57	23	0.0	7.5
Ukraine	96	139	15	0	154	71	0.1	60.4

Source: Statistics and ICT Department, MOT

International Tourist Arrivals to Cambodia by Country of Residence in July 2011

(by all mean of transportations)

Regions Country of Residence	2010		2011			share		change	
			Purpose of Visit			Total	Female	(%)	(%)
			Tourists	Business	Other			2011*	2011*/10
GRAND TOTAL	202,349	224,835	12,115	2,577	239,527	110,999	100.0	18.4	
Southern Europe	3,354	3,962	115	56	4,133	1,788	1.7	23.2	
Croatia	49	34	1	0	35	10	0.0	-28.6	
Greece	83	80	2	2	84	37	0.0	1.2	
Italy	953	1,053	49	30	1,132	396	0.5	18.8	
Portugal	197	191	3	1	195	97	0.1	-1.0	
Serbia		23	1	1	25	10	0.0		
Slovenia	60	54	3	0	57	23	0.0	-5.0	
Spain	1,909	2,425	39	21	2,485	1,186	1.0	30.2	
Turkey	103	102	17	1	120	29	0.1	16.5	
Other Europe	142	171	15	14	200	43	0.1	40.8	
Americas	15,052	15,722	895	515	17,132	7,458	7.2	13.8	
Argentina	119	169	5	9	183	81	0.1	53.8	
Brazil	126	219	4	6	229	109	0.1	81.7	
Canada	2,581	2,800	141	40	2,981	1,338	1.2	15.5	
Chile	116	181	1	0	182	93	0.1	56.9	
Colombia	81	150	0	2	152	65	0.1	87.7	
Costa Rica		18	1	2	21	8	0.0		
Ecuador		14	2	0	16	5	0.0		
Mexico	379	448	3	1	452	220	0.2	19.3	
Peru	13	36	0	0	36	21	0.0	176.9	
United States	11,534	11,574	725	443	12,742	5,476	5.3	10.5	
Uruguay	3	15	0	0	15	8	0.0	400.0	
Other Americas	100	98	13	12	123	34	0.1	23.0	
Africa	358	495	47	20	562	205	0.2	57.0	
Cameroon	31	49	0	2	51	12	0.0	64.5	
Congo		12	0	0	12	2	0.0		
Ghana	29	48	2	4	54	5	0.0	86.2	
Kenya		15	2	5	22	10	0.0		
Liberia		37	0	0	37	5	0.0		
Nigeria	78	19	23	0	42	2	0.0	-46.2	
Sudan	1	11	0	0	11	6	0.0	1000.0	
South Africa	177	252	18	5	275	134	0.1	55.4	
Uganda		33	0	1	34	18	0.0		
Other Africa	42	19	2	3	24	11	0.0	-42.9	
Middle East	580	564	21	11	596	158	0.2	2.8	
Egypt	15	8	2	4	14	5	0.0	-6.7	
Iran	43	48	1	2	51	10	0.0	18.6	
Iraq		4	1	2	7	2	0.0		
Israel	361	333	13	1	347	126	0.1	-3.9	
Kuwait	118	103	0	0	103	1	0.0	-12.7	
Oman		12	0	0	12	1	0.0		
Palestine		2	0	0	2	0	0.0		
Qatar		6	0	0	6	2	0.0		
Saudi Arabia	17	14	1	0	15	5	0.0	-11.8	
United Arab Emirates		18	0	0	18	1	0.0		
Yemen		5	2	0	7	0	0.0		
Other Middle East	26	11	1	2	14	5	0.0	-46.2	

Remark:

- Cambodian Overseas:	7,899
- Cambodian Residence:	56,838
- Cambodian outbound tourist departures:	64,015
- International outbound tourist departures:	230,580

COMPILED BY:

1. Mr. Kong Sopheareak

Director
Statistics & Tourism Information Department
Fax: +855 23 885003
E-mail: kong@mot.gov.kh

2. Mr. Horth Vanny

Chief of Tourism Statistics Office
Compile and data analysis
Tel.: +855 12 827664