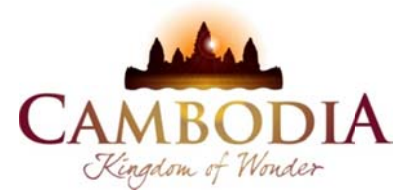




KINGDOM OF CAMBODIA  
NATION RELIGION KING



# TOURISM STATISTICS REPORT

# April 2011

**MINISTRY OF TOURISM**

Statistics and Tourism Information Department

No. A3, Street 169, Sangkat Veal Vong, Khan 7 Makara, Phnom Penh, Cambodia.

Fax: +855 23 885003

E-mail: [kong@mot.gov.kh](mailto:kong@mot.gov.kh)

Web site: [www.mot.gov.kh](http://www.mot.gov.kh)

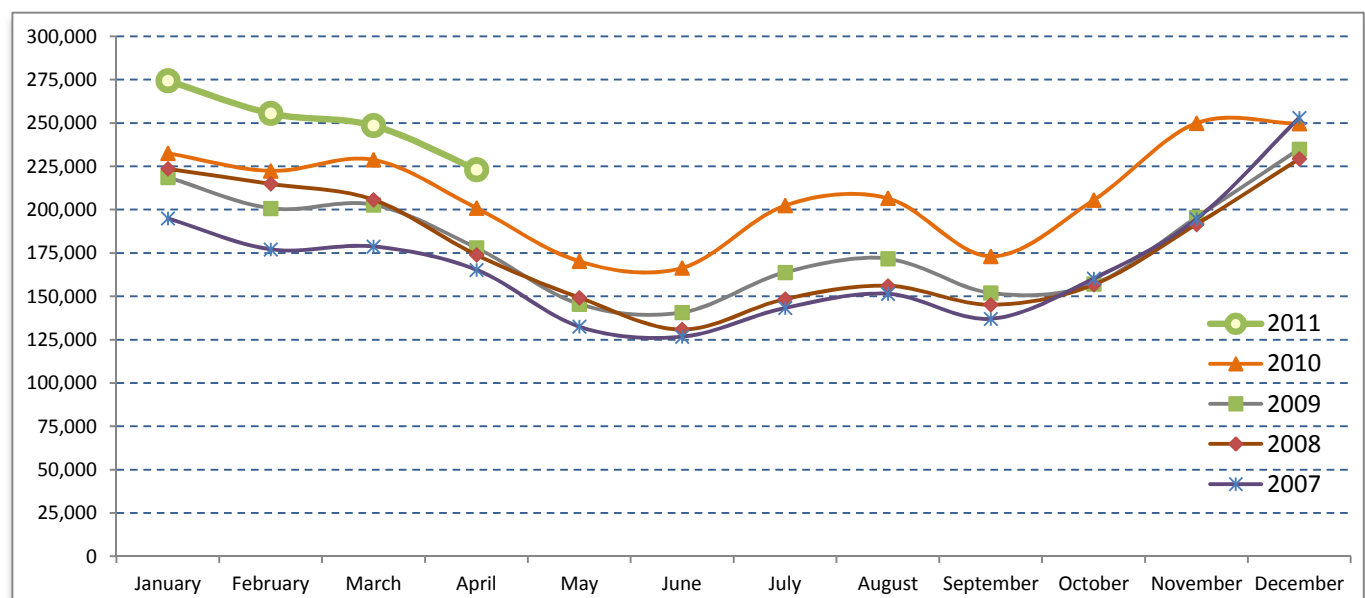
## Tourism Highlights

### International Tourist Arrivals, Average Length of Stay, Hotels Occupancy & Tourism Receipts 1993 - 2010

Years	Tourist Arrivals		Average Length of Stay (days)	Hotels Occupancy (%)	Tourism Receipts (million US\$)
	number	change (%)			
1993	118,183	-	N/A	N/A	N/A
1994	176,617	49.4%	N/A	N/A	N/A
1995	219,680	24.4%	8.00	37.00	100
1996	260,489	18.6%	7.50	40.00	118
1997	218,843	-16.0%	6.40	30.00	103
1998	289,524	32.3%	5.20	40.00	166
1999	367,743	27.0%	5.50	44.00	190
2000	466,365	26.8%	5.50	45.00	228
2001	604,919	29.7%	5.50	48.00	304
2002	786,524	30.0%	5.80	50.00	379
2003	701,014	-10.9%	5.50	50.00	347
2004	1,055,202	50.5%	6.30	52.00	578
2005	1,421,615	34.7%	6.30	52.00	832
2006	1,700,041	19.6%	6.50	54.79	1,049
2007	2,015,128	18.5%	6.50	54.79	1,400
2008	2,125,465	5.5%	6.65	62.68	1,595
2009	2,161,577	1.7%	6.45	63.57	1,561
2010	2,508,289	16.0%	6.45	65.74	1,786

### International tourist arrivals to Cambodia

Destination	Months	2007	2008	2009	2010	2011	change (%) 2011*/10
<b>Cambodia</b>	<b>Q1</b>	<b>550,813</b>	<b>644,205</b>	<b>622,288</b>	<b>683,692</b>	<b>778,467</b>	<b>13.9</b>
<i>International tourist arrivals</i>	January	194,932	223,581	218,691	232,590	274,471	18.0
<i>by all means of</i>	February	177,130	214,902	200,789	222,354	255,499	14.9
<i>transportations</i>	March	178,751	205,722	202,808	228,748	248,497	8.6
	<b>Q2</b>	<b>424,536</b>	<b>454,031</b>	<b>464,230</b>	<b>537,464</b>	<b>223,032</b>	
	April	165,347	173,903	177,955	200,965	223,032	11.0
	May	132,512	149,275	145,564	170,164		
	June	126,677	130,853	140,711	166,335		
	<b>Q3</b>	<b>431,815</b>	<b>449,693</b>	<b>487,422</b>	<b>582,024</b>	<b>0</b>	
	July	143,310	148,449	163,817	202,349		
	August	151,478	156,098	171,668	206,563		
	September	137,027	145,146	151,937	173,112		
	<b>Q4</b>	<b>607,964</b>	<b>577,536</b>	<b>587,637</b>	<b>705,109</b>	<b>0</b>	
	October	160,235	156,718	157,105	205,515		
	November	194,646	191,549	195,570	249,892		
	December	253,083	229,269	234,962	249,702		
	<b>Total</b>	<b>2,015,128</b>	<b>2,125,465</b>	<b>2,161,577</b>	<b>2,508,289</b>	<b>1,001,499</b>	<b>13.2%</b>



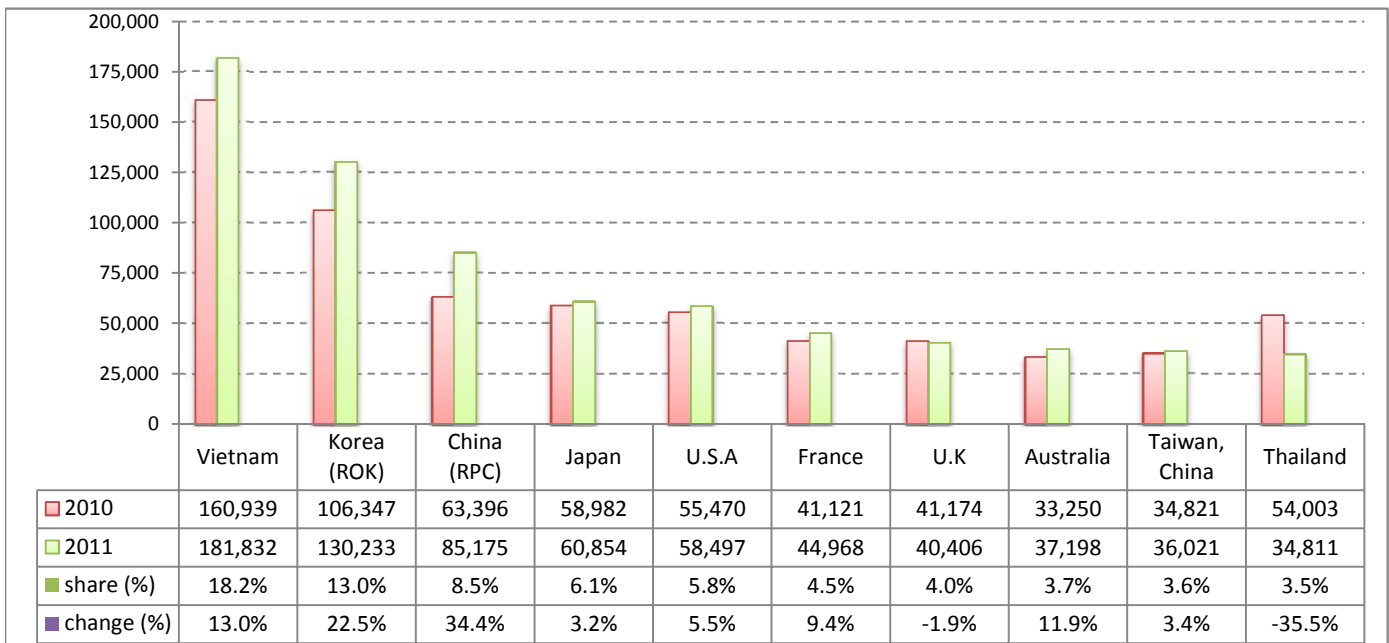
## Executive Summary Report in the First Four Months of 2011

I. International tourist arrivals to Cambodia in January - April was: **1,001,499**

### II. Mode of arrivals

	visitors	share (%)
<b>Air</b>	<b>534,094</b>	<b>53.3</b>
Phnom Penh Int'l Airport	220,036	22.0
Siem Reap Int'l Airport	314,058	31.4
<b>Land and Water ways</b>	<b>467,405</b>	<b>46.7</b>
Land	434,232	43.4
Water ways	33,173	3.3
<b>Total</b>	<b>1,001,499</b>	<b>100.0</b>

### III. Top ten markets arrivals in January - April 2011



### IV. International tourist arrivals to Cambodia in January - April 2011

	Inbound		share (%)		change (%)
	2010	2011	2010	2011	2011*/10
<b>Air</b>	<b>468,981</b>	<b>534,094</b>	<b>53.0</b>	<b>53.3</b>	<b>13.9</b>
Phnom Penh Int'l Airport	202,776	220,036	22.9	22.0	8.5
Siem Reap Int'l Airport	266,205	314,058	30.1	31.4	18.0
<b>Land and Water ways</b>	<b>415,676</b>	<b>467,405</b>	<b>47.0</b>	<b>46.7</b>	<b>12.4</b>
Land	384,448	434,232	43.5	43.4	12.9
Water ways	31,228	33,173	3.5	3.3	6.2
<b>Total</b>	<b>884,657</b>	<b>1,001,499</b>	<b>100.0</b>	<b>100.0</b>	<b>13.2</b>

### V. Remark: Percentage share of international tourist arrivals at destinations in January - April 2011

	Arrivals		share (%)		change (%)
	2010	2011	2010	2011	2011*/10
Phnom Penh & Other Destinations	408,756	435,574	46.2	43.5	6.6
Siem Reap Province	475,901	565,925	53.8	56.5	18.9
<b>Total</b>	<b>884,657</b>	<b>1,001,499</b>	<b>100.0</b>	<b>100.0</b>	<b>13.2</b>

### VI. Outbound tourists departures in January - April 2011

	Outbound		change (%)
	2010	2011	2011*/10
Cambodian outbound tourists	152,418	189,455	24.3
International outbound tourists	824,725	998,884	21.1

## International Tourist Arrivals to Cambodia by Country of Residence in January - April 2011

(by all mean of transportations)

Regions Country of Residence	2010	2011			Total	Female	share	change
		Purpose of Visit					(%)	(%)
		Tourists	Business	Other			2011*	2011*/10
<b>GRAND TOTAL</b>	<b>884,657</b>	<b>941,469</b>	<b>49,107</b>	<b>10,923</b>	<b>1,001,499</b>	<b>444,265</b>	<b>100.0</b>	<b>13.2</b>
<b>Asia and the Pacific</b>	<b>609,035</b>	<b>642,681</b>	<b>39,431</b>	<b>5,624</b>	<b>687,736</b>	<b>311,705</b>	<b>68.7</b>	<b>12.9</b>
<b>ASEAN</b>	<b>299,045</b>	<b>305,827</b>	<b>11,802</b>	<b>2,614</b>	<b>320,243</b>	<b>144,134</b>	<b>32.0</b>	<b>7.1</b>
Brunei Darussalam	133	84	4	37	125	44	0.0	-6.0
Indonesia	3,680	3,744	1,011	154	4,909	1,870	0.5	33.4
Lao PDR	23,858	33,553	53	134	33,740	21,249	3.4	41.4
Malaysia	24,864	27,924	2,134	94	30,152	10,251	3.0	21.3
Myanmar	885	1,549	137	40	1,726	775	0.2	95.0
Philippines	17,886	17,916	1,802	373	20,091	11,962	2.0	12.3
Singapore	12,797	12,088	637	132	12,857	4,245	1.3	0.5
Thailand	54,003	30,672	3,561	578	34,811	11,882	3.5	-35.5
Vietnam	160,939	178,297	2,463	1,072	181,832	81,856	18.2	13.0
<b>Eastern Asia</b>	<b>265,096</b>	<b>287,686</b>	<b>24,528</b>	<b>1,891</b>	<b>314,105</b>	<b>146,112</b>	<b>31.4</b>	<b>18.5</b>
China (RPC)	63,396	69,933	14,756	486	85,175	38,563	8.5	34.4
Hong Kong SAR	1,483	1,634	93	4	1,731	757	0.2	16.7
Japan	58,982	58,420	1,697	737	60,854	27,343	6.1	3.2
Korea (ROK)	106,347	125,004	4,576	653	130,233	63,129	13.0	22.5
Mongolia	67	82	3	6	91	49	0.0	35.8
Taiwan, China	34,821	32,613	3,403	5	36,021	16,271	3.6	3.4
<b>Southern Asia</b>	<b>5,640</b>	<b>4,853</b>	<b>1,043</b>	<b>310</b>	<b>6,206</b>	<b>1,646</b>	<b>0.6</b>	<b>10.0</b>
Afghanistan	116	60	2	8	70	17	0.0	-39.7
Bangladesh	346	248	80	43	371	49	0.0	7.2
Bhutan		17	2	15	34	13	0.0	
India	4,253	3,895	681	136	4,712	1,343	0.5	10.8
Nepal	300	225	76	38	339	77	0.0	13.0
Pakistan	300	191	130	37	358	73	0.0	19.3
Srilanka	325	217	72	33	322	74	0.0	-0.9
<b>Western Asia</b>	<b>0</b>	<b>814</b>	<b>44</b>	<b>8</b>	<b>866</b>	<b>455</b>	<b>0.1</b>	
Kazakhstan		590	37	5	632	303	0.1	
Uzbekistan		224	7	3	234	152	0.0	
<b>Oceania</b>	<b>37,873</b>	<b>39,736</b>	<b>1,972</b>	<b>741</b>	<b>42,449</b>	<b>18,648</b>	<b>4.2</b>	<b>12.1</b>
Australia	33,250	34,853	1,691	654	37,198	16,552	3.7	11.9
Fiji		37	12	7	56	18	0.0	
New Zealand	4,623	4,846	269	80	5,195	2,078	0.5	12.4
Other Asia & the Pacific	1,381	3,765	42	60	3,867	710	0.4	180.0
<b>Europe</b>	<b>193,150</b>	<b>213,928</b>	<b>6,042</b>	<b>3,139</b>	<b>223,109</b>	<b>94,068</b>	<b>22.3</b>	<b>15.5</b>
<b>Northern Europe</b>	<b>61,562</b>	<b>59,695</b>	<b>1,989</b>	<b>779</b>	<b>62,463</b>	<b>24,364</b>	<b>6.2</b>	<b>1.5</b>
Denmark	3,779	4,187	112	41	4,340	1,833	0.4	14.8
Finland	2,745	3,169	80	64	3,313	1,224	0.3	20.7
Iceland	134	123	4	0	127	41	0.0	-5.2
Ireland	2,769	2,559	80	40	2,679	935	0.3	-3.3
Norway	3,856	3,916	123	40	4,079	1,752	0.4	5.8
Sweden	7,105	7,258	199	62	7,519	2,979	0.8	5.8
United Kingdom	41,174	38,483	1,391	532	40,406	15,600	4.0	-1.9
<b>Western Europe</b>	<b>93,208</b>	<b>94,580</b>	<b>3,248</b>	<b>1,862</b>	<b>99,690</b>	<b>41,025</b>	<b>10.0</b>	<b>7.0</b>
Austria	3,954	3,451	49	26	3,526	1,345	0.4	-10.8
Belgium	5,323	4,902	165	114	5,181	2,047	0.5	-2.7
France	41,121	41,843	2,065	1,060	44,968	19,318	4.5	9.4
Germany	27,835	28,864	545	423	29,832	11,906	3.0	7.2
Luxembourg	281	207	4	10	221	90	0.0	-21.4
Monaco		15	0	2	17	4	0.0	
Netherlands	8,322	8,019	220	133	8,372	3,245	0.8	0.6
Switzerland	6,372	7,279	200	94	7,573	3,070	0.8	18.8
<b>Eastern Europe</b>	<b>22,840</b>	<b>40,726</b>	<b>400</b>	<b>138</b>	<b>41,264</b>	<b>21,591</b>	<b>4.1</b>	<b>80.7</b>
Bulgaria	237	181	1	5	187	104	0.0	-21.1
Czech Republic	1,528	1,564	11	7	1,582	668	0.2	3.5
Estonia		502	10	5	517	195	0.1	
Hungary	1,704	1,379	38	6	1,423	643	0.1	-16.5
Lithuania		859	5	0	864	459	0.1	
Poland	3,449	3,772	18	27	3,817	1,979	0.4	10.7
Romania	714	418	4	1	423	232	0.0	-40.8
Russian Federation	13,625	29,803	279	57	30,139	16,049	3.0	121.2
Slovakia	479	561	7	19	587	243	0.1	22.5
Ukraine	1,104	1,687	27	11	1,725	1,019	0.2	56.3

## International Tourist Arrivals to Cambodia by Country of Residence in January - April 2011

(by all mean of transportations)

Regions Country of Residence	2010		2011			share		change	
			Purpose of Visit			Total	Female	(%)	(%)
			Tourists	Business	Other			2011*	2011*/10
<b>GRAND TOTAL</b>	<b>884,657</b>	<b>941,469</b>	<b>49,107</b>	<b>10,923</b>	<b>1,001,499</b>	<b>444,265</b>	<b>100.0</b>	<b>13.2</b>	
<b>Southern Europe</b>	<b>14,401</b>	<b>15,461</b>	<b>376</b>	<b>319</b>	<b>16,156</b>	<b>6,479</b>	<b>1.6</b>	<b>12.2</b>	
Croatia	188	197	11	6	214	83	0.0	13.8	
Greece	553	522	8	5	535	206	0.1	-3.3	
Italy	7,751	8,156	182	103	8,441	3,204	0.8	8.9	
Portugal	854	978	17	20	1,015	506	0.1	18.9	
Serbia		183	2	6	191	89	0.0		
Slovenia	318	334	3	4	341	151	0.0	7.2	
Spain	3,987	3,951	96	87	4,134	1,816	0.4	3.7	
Turkey	750	1,140	57	88	1,285	424	0.1	71.3	
Other Europe	1,139	3,466	29	41	3,536	609	0.4	210.4	
<b>Americas</b>	<b>77,382</b>	<b>79,507</b>	<b>3,386</b>	<b>2,058</b>	<b>84,951</b>	<b>36,488</b>	<b>8.5</b>	<b>9.8</b>	
Argentina	965	1,620	2	19	1,641	839	0.2	70.1	
Brazil	956	1,367	11	17	1,395	663	0.1	45.9	
Canada	16,788	17,348	674	197	18,219	8,059	1.8	8.5	
Chile	940	1,055	43	18	1,116	512	0.1	18.7	
Colombia	427	1,198	17	8	1,223	609	0.1	186.4	
Costa Rica		94	6	2	102	67	0.0		
Ecuador		52	1	1	54	35	0.0		
Mexico	974	987	16	7	1,010	493	0.1	3.7	
Peru	161	160	2	6	168	69	0.0	4.3	
United States	55,470	54,164	2,590	1,743	58,497	24,633	5.8	5.5	
Uruguay	47	108	3	8	119	40	0.0	153.2	
Other Americas	654	1,354	21	32	1,407	469	0.1	115.1	
<b>Africa</b>	<b>1,625</b>	<b>1,847</b>	<b>183</b>	<b>64</b>	<b>2,094</b>	<b>724</b>	<b>0.2</b>	<b>28.9</b>	
Cameroon	187	130	4	6	140	25	0.0	-25.1	
Congo		44	0	3	47	8	0.0		
Ghana	217	158	10	5	173	26	0.0	-20.3	
Kenya		74	1	11	86	45	0.0		
Liberia		165	2	0	167	35	0.0		
Nigeria	241	88	104	6	198	29	0.0	-17.8	
Sudan	17	6	1	0	7	3	0.0	-58.8	
South Africa	842	949	58	10	1,017	422	0.1	20.8	
Uganda		96	0	6	102	78	0.0		
Other Africa	121	137	3	17	157	53	0.0	29.8	
<b>Middle East</b>	<b>3,465</b>	<b>3,506</b>	<b>65</b>	<b>38</b>	<b>3,609</b>	<b>1,280</b>	<b>0.4</b>	<b>4.2</b>	
Egypt	85	36	1	6	43	7	0.0	-49.4	
Iran	135	264	4	2	270	38	0.0	100.0	
Iraq		9	2	3	14	2	0.0		
Israel	2,993	2,779	53	7	2,839	1,150	0.3	-5.1	
Kuwait	161	144	0	0	144	5	0.0	-10.6	
Oman		33	0	3	36	8	0.0		
Palestine		14	1	0	15	2	0.0		
Qatar		33	0	0	33	16	0.0		
Saudi Arabia	13	19	1	4	24	6	0.0	84.6	
United Arab Emirates		42	0	0	42	6	0.0		
Yemen		33	2	2	37	5	0.0		
Other Middle East	78	100	1	11	112	35	0.0	43.6	

### Remark:

- Cambodian Overseas:	26,694
- Cambodian Residence:	174,455
- Cambodian outbound tourist departures:	189,455
- International outbound tourist departures:	998,884

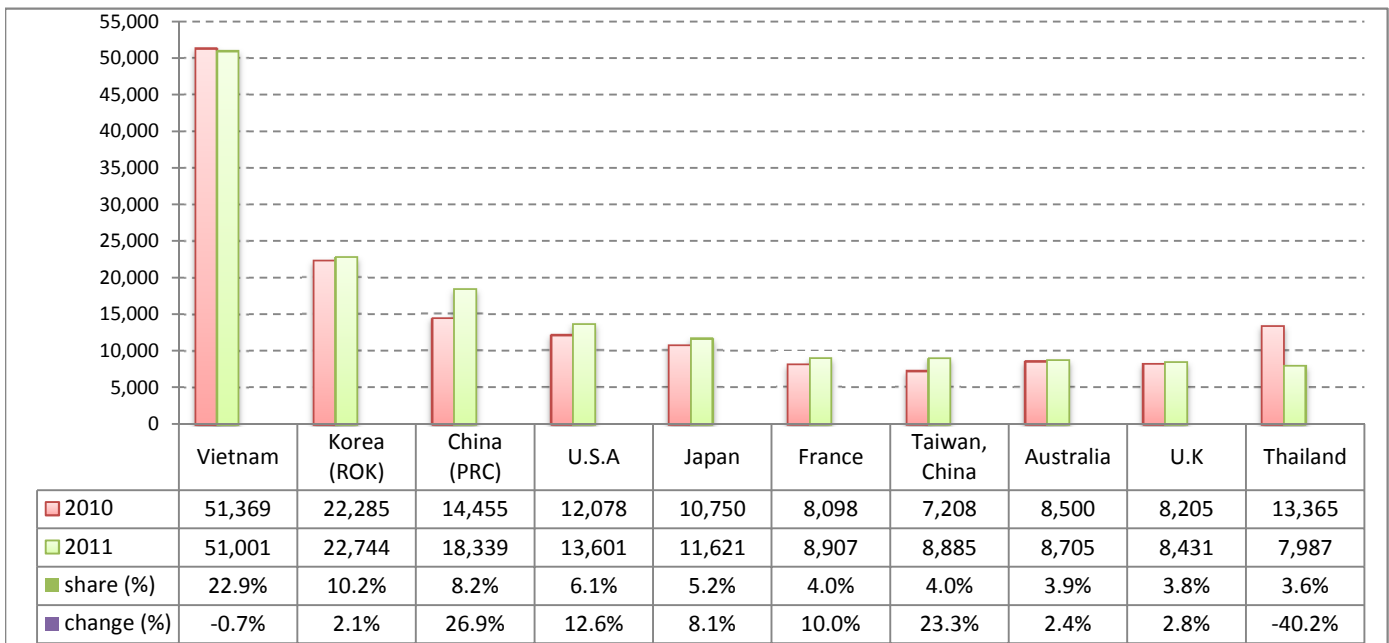
I. International tourist arrivals to Cambodia in April was:

223,032

II. Mode of arrivals

	visitors	share (%)
<b>Air</b>	<b>106,665</b>	<b>47.8</b>
Phnom Penh Int'l Airport	49,478	22.2
Siem Reap Int'l Airport	57,187	25.6
<b>Land and Water ways</b>	<b>116,367</b>	<b>52.2</b>
Land	108,624	48.7
Water ways	7,743	3.5
<b>Total</b>	<b>223,032</b>	<b>100.0</b>

III. Top ten markets arrivals in April 2011



IV. International tourist arrivals to Cambodia in April 2011

	Inbound		share (%)		change (%)
	2010	2011	2010	2011	2011*/10
<b>Air</b>	<b>97,475</b>	<b>106,665</b>	<b>48.5</b>	<b>47.8</b>	<b>9.4</b>
Phnom Penh Int'l Airport	43,797	49,478	21.8	22.2	13.0
Siem Reap Int'l Airport	53,678	57,187	26.7	25.6	6.5
<b>Land and Water ways</b>	<b>103,490</b>	<b>116,367</b>	<b>51.5</b>	<b>52.2</b>	<b>12.4</b>
Land	99,091	108,624	49.3	48.7	9.6
Water ways	4,399	7,743	2.2	3.5	76.0
<b>Total</b>	<b>200,965</b>	<b>223,032</b>	<b>100.0</b>	<b>100.0</b>	<b>11.0</b>

V. Remark: Percentage share of international tourist arrivals at destinations in April 2011

	Arrivals		share (%)		change (%)
	2010	2011	2010	2011	2011*/10
Phnom Penh & Other Destinations	91,166	93,079	45.4	41.7	2.1
Siem Reap Province	109,799	129,953	54.6	58.3	18.4
<b>Total</b>	<b>200,965</b>	<b>223,032</b>	<b>100.0</b>	<b>100.0</b>	<b>11.0</b>

VI. Outbound tourists departures in April 2011

	Outbound		change (%)
	2010	2011	2011*/10
Cambodian outbound tourists	46,323	52,138	12.6
International outbound tourists	183,147	215,957	17.9

## International Tourist Arrivals to Cambodia by Country of Residence in April 2011

(by all mean of transportations)

Regions Country of Residence	2010	2011			Total	Female	share	change
		Purpose of Visit					(%)	(%)
		Tourists	Business	Other			2011*	2011*/10
<b>GRAND TOTAL</b>	<b>200,965</b>	<b>206,337</b>	<b>13,502</b>	<b>3,193</b>	<b>223,032</b>	<b>97,541</b>	<b>100.0</b>	<b>11.0</b>
<b>Asia and the Pacific</b>	<b>149,930</b>	<b>148,019</b>	<b>11,014</b>	<b>1,605</b>	<b>160,638</b>	<b>71,849</b>	<b>72.0</b>	<b>7.1</b>
<b>ASEAN</b>	<b>85,662</b>	<b>80,745</b>	<b>3,362</b>	<b>727</b>	<b>84,834</b>	<b>40,377</b>	<b>38.0</b>	<b>-1.0</b>
Brunei Darussalam	33	34	0	6	40	17	0.0	21.2
Indonesia	965	941	284	47	1,272	524	0.6	31.8
Lao PDR	5,319	7,406	20	67	7,493	5,120	3.4	40.9
Malaysia	6,342	7,109	622	20	7,751	2,523	3.5	22.2
Myanmar	264	599	54	16	669	349	0.3	153.4
Philippines	5,311	5,001	593	126	5,720	3,186	2.6	7.7
Singapore	2,694	2,710	172	19	2,901	897	1.3	7.7
Thailand	13,365	6,843	1,018	126	7,987	2,954	3.6	-40.2
Vietnam	51,369	50,102	599	300	51,001	24,807	22.9	-0.7
<b>Eastern Asia</b>	<b>55,070</b>	<b>54,678</b>	<b>6,847</b>	<b>517</b>	<b>62,042</b>	<b>26,302</b>	<b>27.8</b>	<b>12.7</b>
China (RPC)	14,455	14,044	4,185	110	18,339	8,161	8.2	26.9
Hong Kong SAR	357	418	18	0	436	209	0.2	22.1
Japan	10,750	10,950	445	226	11,621	3,358	5.2	8.1
Korea (ROK)	22,285	21,178	1,388	178	22,744	10,510	10.2	2.1
Mongolia	15	15	1	1	17	9	0.0	13.3
Taiwan, China	7,208	8,073	810	2	8,885	4,055	4.0	23.3
<b>Southern Asia</b>	<b>1,455</b>	<b>1,127</b>	<b>261</b>	<b>92</b>	<b>1,480</b>	<b>429</b>	<b>0.7</b>	<b>1.7</b>
Afghanistan	20	0	0	1	1	1	0.0	-95.0
Bangladesh	87	58	19	10	87	11	0.0	0.0
Bhutan		1	0	5	6	3	0.0	
India	1,118	918	167	45	1,130	344	0.5	1.1
Nepal	64	51	12	10	73	22	0.0	14.1
Pakistan	75	44	38	14	96	22	0.0	28.0
Srilanka	91	55	25	7	87	26	0.0	-4.4
<b>Western Asia</b>	<b>0</b>	<b>122</b>	<b>14</b>	<b>5</b>	<b>141</b>	<b>76</b>	<b>0.1</b>	
Kazakhstan		53	12	3	68	30	0.0	
Uzbekistan		69	2	2	73	46	0.0	
<b>Oceania</b>	<b>7,539</b>	<b>9,450</b>	<b>514</b>	<b>249</b>	<b>10,213</b>	<b>4,478</b>	<b>4.6</b>	<b>35.5</b>
Australia	6,500	8,057	435	213	8,705	3,861	3.9	33.9
Fiji		8	6	4	18	8	0.0	
New Zealand	1,039	1,385	73	32	1,490	609	0.7	43.4
Other Asia & the Pacific	204	1,897	16	15	1,928	187	0.9	845.1
<b>Europe</b>	<b>33,917</b>	<b>40,021</b>	<b>1,529</b>	<b>887</b>	<b>42,437</b>	<b>17,598</b>	<b>19.0</b>	<b>25.1</b>
<b>Northern Europe</b>	<b>11,290</b>	<b>11,365</b>	<b>510</b>	<b>233</b>	<b>12,108</b>	<b>4,884</b>	<b>5.4</b>	<b>7.2</b>
Denmark	592	703	29	14	746	308	0.3	26.0
Finland	393	426	19	17	462	153	0.2	17.6
Iceland	31	22	0	0	22	7	0.0	-29.0
Ireland	556	557	19	10	586	209	0.3	5.4
Norway	572	648	21	10	679	261	0.3	18.7
Sweden	941	1,111	51	20	1,182	490	0.5	25.6
United Kingdom	8,205	7,898	371	162	8,431	3,456	3.8	2.8
<b>Western Europe</b>	<b>16,748</b>	<b>17,296</b>	<b>810</b>	<b>540</b>	<b>18,646</b>	<b>7,609</b>	<b>8.4</b>	<b>11.3</b>
Austria	603	519	15	11	545	214	0.2	-9.6
Belgium	1,072	1,065	42	39	1,146	447	0.5	6.9
France	8,098	8,132	508	267	8,907	3,771	4.0	10.0
Germany	4,361	4,903	131	141	5,175	2,025	2.3	18.7
Luxembourg	80	49	1	0	50	21	0.0	-37.5
Monaco		6	0	2	8	2	0.0	
Netherlands	1,529	1,401	64	41	1,506	589	0.7	-1.5
Switzerland	1,005	1,221	49	39	1,309	540	0.6	30.2
<b>Eastern Europe</b>	<b>3,242</b>	<b>6,881</b>	<b>97</b>	<b>26</b>	<b>7,004</b>	<b>3,765</b>	<b>3.1</b>	<b>116.0</b>
Bulgaria	31	37	1	3	41	28	0.0	32.3
Czech Republic	193	307	2	2	311	139	0.1	61.1
Estonia		58	3	2	63	25	0.0	
Hungary	129	152	9	1	162	68	0.1	25.6
Lithuania		94	1	0	95	46	0.0	
Poland	322	568	5	1	574	295	0.3	78.3
Romania	33	75	3	0	78	53	0.0	136.4
Russian Federation	2,244	5,240	64	12	5,316	2,907	2.4	136.9
Slovakia	114	110	2	5	117	50	0.1	2.6
Ukraine	176	240	7	0	247	154	0.1	40.3

Source: Statistics and ICT Department, MOT

## International Tourist Arrivals to Cambodia by Country of Residence in April 2011

(by all mean of transportations)

Regions Country of Residence	2010		2011			share		change	
			Purpose of Visit			Total	Female	(%)	(%)
			Tourists	Business	Other			2011*	2011*/10
<b>GRAND TOTAL</b>	<b>200,965</b>	<b>206,337</b>	<b>13,502</b>	<b>3,193</b>	<b>223,032</b>	<b>97,541</b>	<b>100.0</b>	<b>11.0</b>	
<b>Southern Europe</b>	<b>2,475</b>	<b>2,690</b>	<b>104</b>	<b>79</b>	<b>2,873</b>	<b>1,187</b>	<b>1.3</b>	<b>16.1</b>	
Croatia	31	22	4	0	26	12	0.0	-16.1	
Greece	107	93	3	0	96	43	0.0	-10.3	
Italy	898	962	51	33	1,046	388	0.5	16.5	
Portugal	241	254	3	2	259	140	0.1	7.5	
Serbia		27	0	1	28	13	0.0		
Slovenia	18	93	0	2	95	40	0.0	427.8	
Spain	1,073	1,099	23	30	1,152	496	0.5	7.4	
Turkey	107	140	20	11	171	55	0.1	59.8	
Other Europe	162	1,789	8	9	1,806	153	0.8	1014.8	
<b>Americas</b>	<b>16,275</b>	<b>17,271</b>	<b>894</b>	<b>670</b>	<b>18,835</b>	<b>7,716</b>	<b>8.4</b>	<b>15.7</b>	
Argentina	182	282	0	2	284	136	0.1	56.0	
Brazil	168	241	5	2	248	116	0.1	47.6	
Canada	3,181	3,378	161	46	3,585	1,639	1.6	12.7	
Chile	134	201	2	2	205	82	0.1	53.0	
Colombia	47	97	6	1	104	57	0.0	121.3	
Costa Rica		44	3	1	48	34	0.0		
Ecuador		11	0	1	12	6	0.0		
Mexico	329	347	4	2	353	171	0.2	7.3	
Peru	39	60	1	2	63	23	0.0	61.5	
United States	12,078	12,290	707	604	13,601	5,331	6.1	12.6	
Uruguay	16	23	0	0	23	12	0.0	43.8	
Other Americas	101	297	5	7	309	109	0.1	205.9	
<b>Africa</b>	<b>387</b>	<b>475</b>	<b>46</b>	<b>15</b>	<b>536</b>	<b>193</b>	<b>0.2</b>	<b>38.5</b>	
Cameroon	49	41	1	1	43	10	0.0	-12.2	
Congo		7	0	0	7	2	0.0		
Ghana	41	37	2	1	40	5	0.0	-2.4	
Kenya		30	0	2	32	15	0.0		
Liberia		42	0	0	42	11	0.0		
Nigeria	54	42	27	2	71	17	0.0	31.5	
Sudan	3	0	0	0	0	0	0.0	-100.0	
South Africa	204	229	16	2	247	98	0.1	21.1	
Uganda		29	0	3	32	24	0.0		
Other Africa	36	18	0	4	22	11	0.0	-38.9	
<b>Middle East</b>	<b>456</b>	<b>551</b>	<b>19</b>	<b>16</b>	<b>586</b>	<b>185</b>	<b>0.3</b>	<b>28.5</b>	
Egypt	13	6	1	0	7	0	0.0	-46.2	
Iran	21	79	1	1	81	10	0.0	285.7	
Iraq		2	2	1	5	0	0.0		
Israel	362	381	15	4	400	155	0.2	10.5	
Kuwait	33	30	0	0	30	0	0.0	-9.1	
Oman		12	0	2	14	6	0.0		
Palestine		5	0	0	5	0	0.0		
Qatar		2	0	0	2	0	0.0		
Saudi Arabia	6	2	0	4	6	4	0.0	0.0	
United Arab Emirates		12	0	0	12	3	0.0		
Yemen		8	0	1	9	1	0.0		
Other Middle East	21	12	0	3	15	6	0.0	-28.6	

### Remark:

- Cambodian Overseas:	6,991
- Cambodian Residence:	53,381
- Cambodian outbound tourist departures:	52,138
- International outbound tourist departures:	215,957



**COMPILED BY:**

1. Mr. Kong Sopheareak

Director  
Statistics & Tourism Information Department  
Fax: +855 23 885003  
E-mail: kong@mot.gov.kh

2. Mr. Horth Vanny

Chief of Tourism Statistics Office  
Compile and data analysis  
Tel.: +855 12 827664