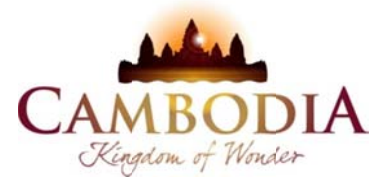




KINGDOM OF CAMBODIA
NATION RELIGION KING



TOURISM STATISTICS REPORT

First Quarter 2011

MINISTRY OF TOURISM

Statistics and Tourism Information Department

No. A3, Street 169, Sangkat Veal Vong, Khan 7 Makara, Phnom Penh, Cambodia.

Fax: +855 23 885003

E-mail: kong@mot.gov.kh

Web site: www.mot.gov.kh

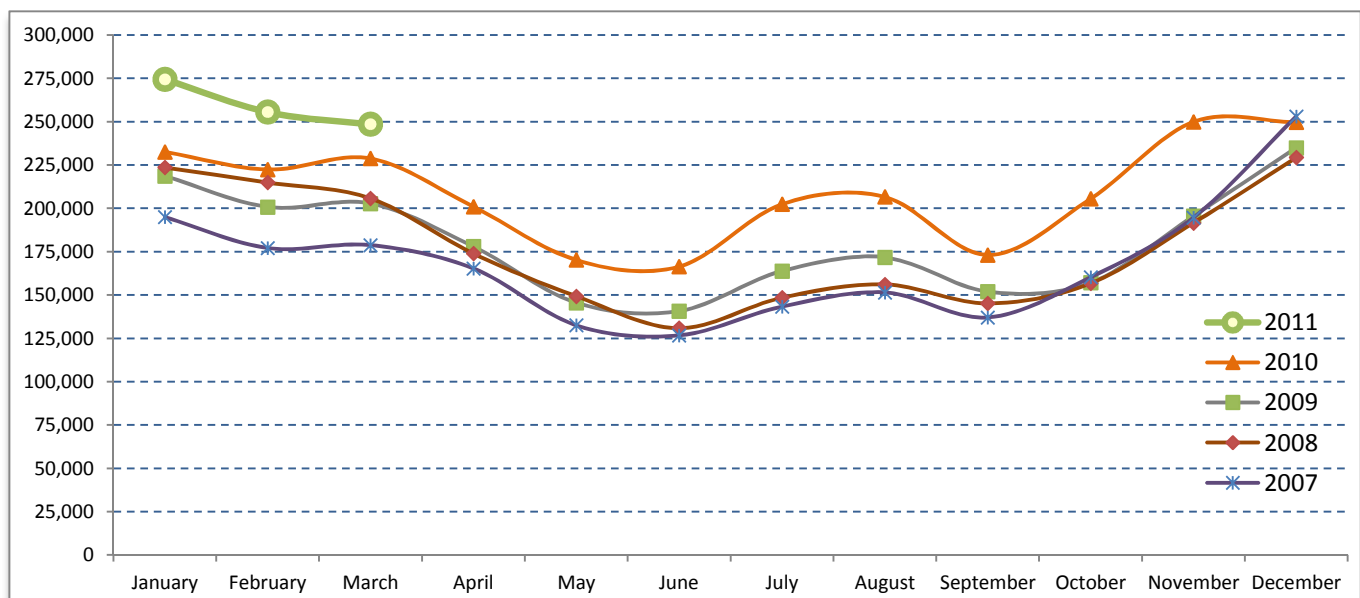
Tourism Highlights

International Tourist Arrivals, Average Length of Stay, Hotels Occupancy & Tourism Receipts 1993 - 2010

Years	Tourist Arrivals		Average Length	Hotels Occupancy	Tourism Receipts
	number	change (%)	of Stay (days)	(%)	(million US\$)
1993	118,183	-	N/A	N/A	N/A
1994	176,617	49.4%	N/A	N/A	N/A
1995	219,680	24.4%	8.00	37.00	100
1996	260,489	18.6%	7.50	40.00	118
1997	218,843	-16.0%	6.40	30.00	103
1998	289,524	32.3%	5.20	40.00	166
1999	367,743	27.0%	5.50	44.00	190
2000	466,365	26.8%	5.50	45.00	228
2001	604,919	29.7%	5.50	48.00	304
2002	786,524	30.0%	5.80	50.00	379
2003	701,014	-10.9%	5.50	50.00	347
2004	1,055,202	50.5%	6.30	52.00	578
2005	1,421,615	34.7%	6.30	52.00	832
2006	1,700,041	19.6%	6.50	54.79	1,049
2007	2,015,128	18.5%	6.50	54.79	1,400
2008	2,125,465	5.5%	6.65	62.68	1,595
2009	2,161,577	1.7%	6.45	63.57	1,561
2010	2,508,289	16.0%	6.45	65.74	1,786

International tourist arrivals to Cambodia

Destination	Months	2007	2008	2009	2010	2011	change (%) 2011*/10
Cambodia	Q1	550,813	644,205	622,288	683,692	778,467	13.9
<i>International tourist arrivals</i>	January	194,932	223,581	218,691	232,590	274,471	18.0
<i>by all means of</i>	February	177,130	214,902	200,789	222,354	255,499	14.9
<i>transportations</i>	March	178,751	205,722	202,808	228,748	248,497	8.6
	Q2	424,536	454,031	464,230	537,464	0	
	April	165,347	173,903	177,955	200,965		
	May	132,512	149,275	145,564	170,164		
	June	126,677	130,853	140,711	166,335		
	Q3	431,815	449,693	487,422	582,024	0	
	July	143,310	148,449	163,817	202,349		
	August	151,478	156,098	171,668	206,563		
	September	137,027	145,146	151,937	173,112		
	Q4	607,964	577,536	587,637	705,109	0	
	October	160,235	156,718	157,105	205,515		
	November	194,646	191,549	195,570	249,892		
	December	253,083	229,269	234,962	249,702		
	Total	2,015,128	2,125,465	2,161,577	2,508,289	778,467	13.9%



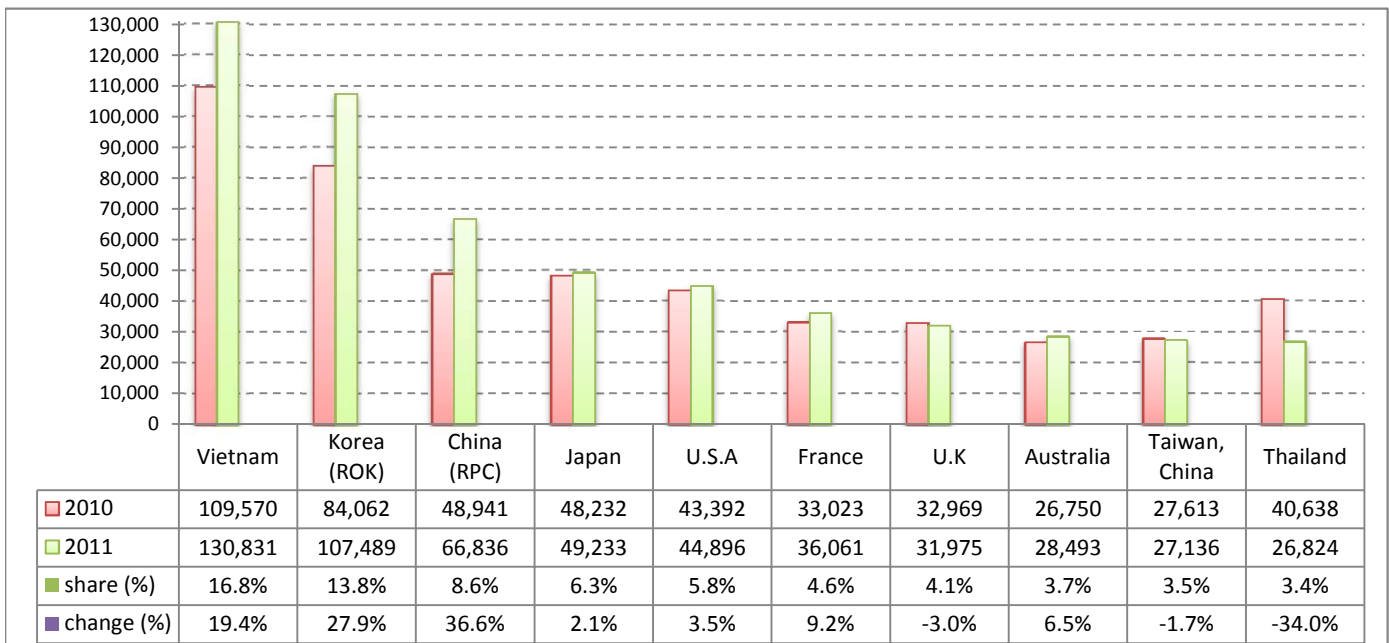
Executive Summary Report in the First Quarter Months of 2011

I. International tourist arrivals to Cambodia in January - March was: **778,467**

II. Mode of arrivals

	visitors	share (%)
Air	427,429	54.9
Phnom Penh Int'l Airport	170,558	21.9
Siem Reap Int'l Airport	256,871	33.0
Land and Water ways	351,038	45.1
Land	325,608	41.8
Water ways	25,430	3.3
Total	778,467	100.0

III. Top ten markets arrivals in January - March 2011



IV. International tourist arrivals to Cambodia in January - March 2011

	Inbound		share (%)		change (%)
	2010	2011	2010	2011	2011*/10
Air	371,506	427,429	54.3	54.9	15.1
Phnom Penh Int'l Airport	158,979	170,558	23.3	21.9	7.3
Siem Reap Int'l Airport	212,527	256,871	31.1	33.0	20.9
Land and Water ways	312,186	351,038	45.7	45.1	12.4
Land	285,357	325,608	41.7	41.8	14.1
Water ways	26,829	25,430	3.9	3.3	-5.2
Total	683,692	778,467	100.0	100.0	13.9

V. Remark: Percentage share of international tourist arrivals at destinations in January - March 2011

	Arrivals		share (%)		change (%)
	2010	2011	2010	2011	2011*/10
Phnom Penh & Other Destinations	317,590	342,495	46.5	44.0	7.8
Siem Reap Province	366,102	435,972	53.5	56.0	19.1
Total	683,692	778,467	100.0	100.0	13.9

VI. Outbound tourists departures in January - March 2010

	Outbound		change (%)
	2010	2011	2011*/10
Cambodian outbound tourists	106,095	137,317	29.4
International outbound tourists	641,578	782,927	22.0

International Tourist Arrivals to Cambodia by Country of Residence in January - March 2011

(by all mean of transportations)

Regions Country of Residence	2010	2011			Total	Female	share	change
		Purpose of Visit					(%)	(%)
		Tourists	Business	Other			2011*	2011*/10
GRAND TOTAL	683,692	735,132	35,605	7,730	778,467	346,724	100.0	13.9
Asia and the Pacific	459,105	494,662	28,417	4,019	527,098	239,856	67.7	14.8
ASEAN	213,383	225,082	8,440	1,887	235,409	103,757	30.2	10.3
Brunei Darussalam	100	50	4	31	85	27	0.0	-15.0
Indonesia	2,715	2,803	727	107	3,637	1,346	0.5	34.0
Lao PDR	18,539	26,147	33	67	26,247	16,129	3.4	41.6
Malaysia	18,522	20,815	1,512	74	22,401	7,728	2.9	20.9
Myanmar	621	950	83	24	1,057	426	0.1	70.2
Philippines	12,575	12,915	1,209	247	14,371	8,776	1.8	14.3
Singapore	10,103	9,378	465	113	9,956	3,348	1.3	-1.5
Thailand	40,638	23,829	2,543	452	26,824	8,928	3.4	-34.0
Vietnam	109,570	128,195	1,864	772	130,831	57,049	16.8	19.4
Eastern Asia	210,026	233,008	17,681	1,374	252,063	119,810	32.4	20.0
China (RPC)	48,941	55,889	10,571	376	66,836	30,402	8.6	36.6
Hong Kong SAR	1,126	1,216	75	4	1,295	548	0.2	15.0
Japan	48,232	47,470	1,252	511	49,233	23,985	6.3	2.1
Korea (ROK)	84,062	103,826	3,188	475	107,489	52,619	13.8	27.9
Mongolia	52	67	2	5	74	40	0.0	42.3
Taiwan, China	27,613	24,540	2,593	3	27,136	12,216	3.5	-1.7
Southern Asia	4,185	3,726	782	218	4,726	1,217	0.6	12.9
Afghanistan	96	60	2	7	69	16	0.0	-28.1
Bangladesh	259	190	61	33	284	38	0.0	9.7
Bhutan		16	2	10	28	10	0.0	
India	3,135	2,977	514	91	3,582	999	0.5	14.3
Nepal	236	174	64	28	266	55	0.0	12.7
Pakistan	225	147	92	23	262	51	0.0	16.4
Srilanka	234	162	47	26	235	48	0.0	0.4
Western Asia	0	692	30	3	725	379	0.1	
Kazakhstan		537	25	2	564	273	0.1	
Uzbekistan		155	5	1	161	106	0.0	
Oceania	30,334	30,286	1,458	492	32,236	14,170	4.1	6.3
Australia	26,750	26,796	1,256	441	28,493	12,691	3.7	6.5
Fiji		29	6	3	38	10	0.0	
New Zealand	3,584	3,461	196	48	3,705	1,469	0.5	3.4
Other Asia & the Pacific	1,177	1,868	26	45	1,939	523	0.2	64.7
Europe	159,233	173,907	4,513	2,252	180,672	76,470	23.2	13.5
Northern Europe	50,272	48,330	1,479	546	50,355	19,480	6.5	0.2
Denmark	3,187	3,484	83	27	3,594	1,525	0.5	12.8
Finland	2,352	2,743	61	47	2,851	1,071	0.4	21.2
Iceland	103	101	4	0	105	34	0.0	1.9
Ireland	2,213	2,002	61	30	2,093	726	0.3	-5.4
Norway	3,284	3,268	102	30	3,400	1,491	0.4	3.5
Sweden	6,164	6,147	148	42	6,337	2,489	0.8	2.8
United Kingdom	32,969	30,585	1,020	370	31,975	12,144	4.1	-3.0
Western Europe	76,460	77,284	2,438	1,322	81,044	33,416	10.4	6.0
Austria	3,351	2,932	34	15	2,981	1,131	0.4	-11.0
Belgium	4,251	3,837	123	75	4,035	1,600	0.5	-5.1
France	33,023	33,711	1,557	793	36,061	15,547	4.6	9.2
Germany	23,474	23,961	414	282	24,657	9,881	3.2	5.0
Luxembourg	201	158	3	10	171	69	0.0	-14.9
Monaco		9	0	0	9	2	0.0	
Netherlands	6,793	6,618	156	92	6,866	2,656	0.9	1.1
Switzerland	5,367	6,058	151	55	6,264	2,530	0.8	16.7
Eastern Europe	19,598	33,845	303	112	34,260	17,826	4.4	74.8
Bulgaria	206	144	0	2	146	76	0.0	-29.1
Czech Republic	1,335	1,257	9	5	1,271	529	0.2	-4.8
Estonia		444	7	3	454	170	0.1	
Hungary	1,575	1,227	29	5	1,261	575	0.2	-19.9
Lithuania		765	4	0	769	413	0.1	
Poland	3,127	3,204	13	26	3,243	1,684	0.4	3.7
Romania	681	343	1	1	345	179	0.0	-49.3
Russian Federation	11,381	24,563	215	45	24,823	13,142	3.2	118.1
Slovakia	365	451	5	14	470	193	0.1	28.8
Ukraine	928	1,447	20	11	1,478	865	0.2	59.3

International Tourist Arrivals to Cambodia by Country of Residence in January - March 2011

(by all mean of transportations)

Regions Country of Residence	2010		2011			share		change	
			Purpose of Visit			Total	Female	(%)	(%)
			Tourists	Business	Other			2011*	2011*/10
GRAND TOTAL	683,692	735,132	35,605	7,730	778,467	346,724	100.0	13.9	
Southern Europe	11,926	12,771	272	240	13,283	5,292	1.7	11.4	
Croatia	157	175	7	6	188	71	0.0	19.7	
Greece	446	429	5	5	439	163	0.1	-1.6	
Italy	6,853	7,194	131	70	7,395	2,816	0.9	7.9	
Portugal	613	724	14	18	756	366	0.1	23.3	
Serbia		156	2	5	163	76	0.0		
Slovenia	300	241	3	2	246	111	0.0	-18.0	
Spain	2,914	2,852	73	57	2,982	1,320	0.4	2.3	
Turkey	643	1,000	37	77	1,114	369	0.1	73.3	
Other Europe	977	1,677	21	32	1,730	456	0.2	77.1	
Americas	61,107	62,236	2,492	1,388	66,116	28,772	8.5	8.2	
Argentina	783	1,338	2	17	1,357	703	0.2	73.3	
Brazil	788	1,126	6	15	1,147	547	0.1	45.6	
Canada	13,607	13,970	513	151	14,634	6,420	1.9	7.5	
Chile	806	854	41	16	911	430	0.1	13.0	
Colombia	380	1,101	11	7	1,119	552	0.1	194.5	
Costa Rica		50	3	1	54	33	0.0		
Ecuador		41	1	0	42	29	0.0		
Mexico	645	640	12	5	657	322	0.1	1.9	
Peru	122	100	1	4	105	46	0.0	-13.9	
United States	43,392	41,874	1,883	1,139	44,896	19,302	5.8	3.5	
Uruguay	31	85	3	8	96	28	0.0	209.7	
Other Americas	553	1,057	16	25	1,098	360	0.1	98.6	
Africa	1,238	1,372	137	49	1,558	531	0.2	25.8	
Cameroon	138	89	3	5	97	15	0.0	-29.7	
Congo		37	0	3	40	6	0.0		
Ghana	176	121	8	4	133	21	0.0	-24.4	
Kenya		44	1	9	54	30	0.0		
Liberia		123	2	0	125	24	0.0		
Nigeria	187	46	77	4	127	12	0.0	-32.1	
Sudan	14	6	1	0	7	3	0.0	-50.0	
South Africa	638	720	42	8	770	324	0.1	20.7	
Uganda		67	0	3	70	54	0.0		
Other Africa	85	119	3	13	135	42	0.0	58.8	
Middle East	3,009	2,955	46	22	3,023	1,095	0.4	0.5	
Egypt	72	30	0	6	36	7	0.0	-50.0	
Iran	114	185	3	1	189	28	0.0	65.8	
Iraq		7	0	2	9	2	0.0		
Israel	2,631	2,398	38	3	2,439	995	0.3	-7.3	
Kuwait	128	114	0	0	114	5	0.0	-10.9	
Oman		21	0	1	22	2	0.0		
Palestine		9	1	0	10	2	0.0		
Qatar		31	0	0	31	16	0.0		
Saudi Arabia	7	17	1	0	18	2	0.0	157.1	
United Arab Emirates		30	0	0	30	3	0.0		
Yemen		25	2	1	28	4	0.0		
Other Middle East	57	88	1	8	97	29	0.0	70.2	

Remark:

- Cambodian Overseas:	19,703
- Cambodian Residence:	121,074
- Cambodian outbound tourist departures:	137,317
- International outbound tourist departures:	782,927

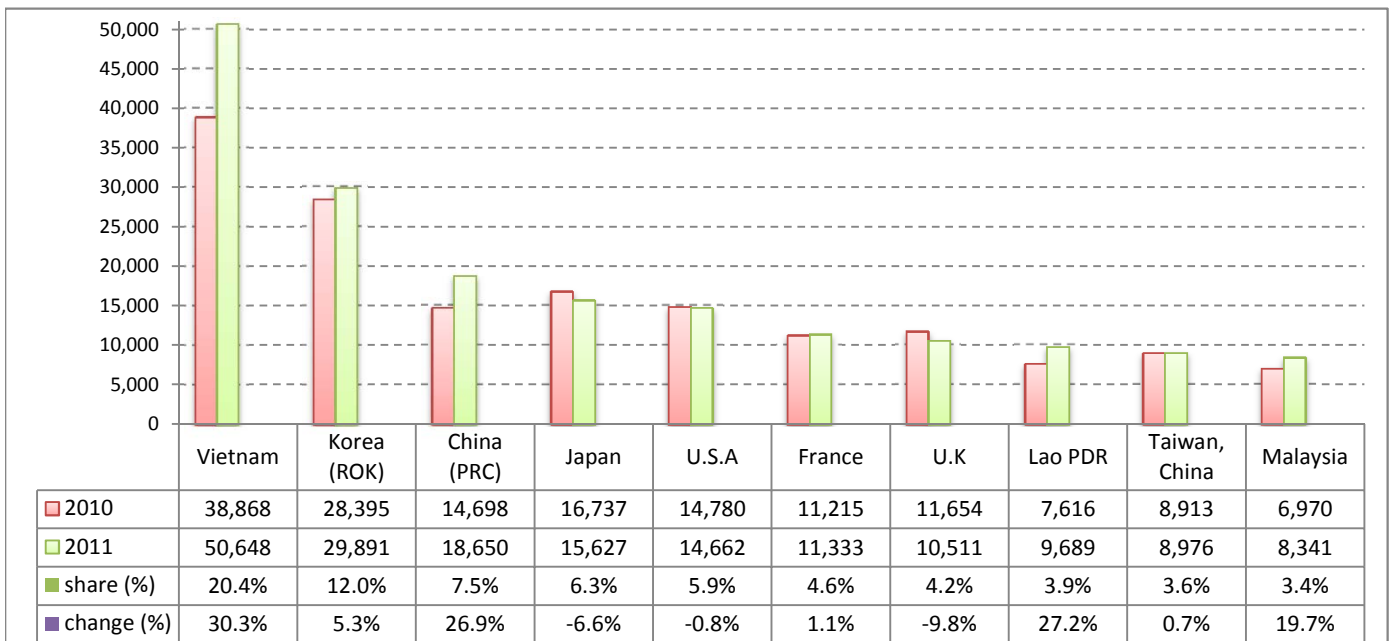
Executive Summary Report in March 2011

I. International tourist arrivals to Cambodia in March was: **248,497**

II. Mode of arrivals

	visitors	share (%)
Air	130,240	52.4
Phnom Penh Int'l Airport	54,451	21.9
Siem Reap Int'l Airport	75,789	30.5
Land and Water ways	118,257	47.6
Land	108,662	43.7
Water ways	9,595	3.9
Total	248,497	100.0

III. Top ten markets arrivals in March 2011



IV. International tourist arrivals to Cambodia in March 2011

	Inbound		share (%)		change (%)
	2010	2011	2010	2011	2011*/10
Air	122,616	130,240	53.6	52.4	6.2
Phnom Penh Int'l Airport	52,528	54,451	23.0	21.9	3.7
Siem Reap Int'l Airport	70,088	75,789	30.6	30.5	8.1
Land and Water ways	106,132	118,257	46.4	47.6	11.4
Land	93,583	108,662	40.9	43.7	16.1
Water ways	12,549	9,595	5.5	3.9	-23.5
Total	228,748	248,497	100.0	100.0	8.6

V. Remark: Percentage share of international tourist arrivals at destinations in March 2011

	Arrivals		share (%)		change (%)
	2010	2011	2010	2011	2011*/10
Phnom Penh & Other Destinations	110,866	125,472	48.5	50.5	13.2
Siem Reap Province	117,882	123,025	51.5	49.5	4.4
Total	228,748	248,497	100.0	100.0	8.6

VI. Outbound tourists departures in March 2010

	Outbound		change (%)
	2010	2011	2011*/10
Cambodian outbound tourists	35,666	47,552	33.3
International outbound tourists	213,645	250,261	17.1

International Tourist Arrivals to Cambodia by Country of Residence in March 2011

(by all mean of transportations)

Regions Country of Residence	2010	2011			Total	Female	share	change
		Purpose of Visit					(%)	(%)
		Tourists	Business	Other			2011*	2011*/10
GRAND TOTAL	228,748	233,832	12,205	2,460	248,497	110,463	100.0	8.6
Asia and the Pacific	155,189	159,748	9,867	1,296	170,911	76,750	68.8	10.1
ASEAN	74,887	83,552	2,491	654	86,697	37,833	34.9	15.8
Brunei Darussalam	58	12	2	7	21	8	0.0	-63.8
Indonesia	975	1,006	227	48	1,281	509	0.5	31.4
Lao PDR	7,616	9,652	10	27	9,689	6,715	3.9	27.2
Malaysia	6,970	7,900	427	14	8,341	2,859	3.4	19.7
Myanmar	247	378	28	6	412	155	0.2	66.8
Philippines	4,247	4,710	373	71	5,154	3,205	2.1	21.4
Singapore	3,778	3,680	138	13	3,831	1,354	1.5	1.4
Thailand	12,128	6,387	808	125	7,320	2,553	2.9	-39.6
Vietnam	38,868	49,827	478	343	50,648	20,475	20.4	30.3
Eastern Asia	69,108	66,485	6,586	424	73,495	34,829	29.6	6.3
China (RPC)	14,698	14,457	4,058	135	18,650	7,907	7.5	26.9
Hong Kong SAR	352	309	18	1	328	151	0.1	-6.8
Japan	16,737	15,035	442	150	15,627	7,609	6.3	-6.6
Korea (ROK)	28,395	28,598	1,157	136	29,891	15,072	12.0	5.3
Mongolia	13	22	1	0	23	11	0.0	76.9
Taiwan, China	8,913	8,064	910	2	8,976	4,079	3.6	0.7
Southern Asia	1,284	1,128	308	67	1,503	357	0.6	17.1
Afghanistan	65	4	0	1	5	0	0.0	-92.3
Bangladesh	74	74	16	11	101	11	0.0	36.5
Bhutan		7	1	4	12	4	0.0	
India	902	864	197	28	1,089	288	0.4	20.7
Nepal	87	58	34	6	98	15	0.0	12.6
Pakistan	68	56	39	7	102	19	0.0	50.0
Srilanka	88	65	21	10	96	20	0.0	9.1
Western Asia	0	202	7	1	210	117	0.1	
Kazakhstan		162	6	1	169	88	0.1	
Uzbekistan		40	1	0	41	29	0.0	
Oceania	9,539	8,066	467	137	8,670	3,541	3.5	-9.1
Australia	8,435	7,008	407	117	7,532	3,119	3.0	-10.7
Fiji		17	3	1	21	7	0.0	
New Zealand	1,104	1,041	57	19	1,117	415	0.4	1.2
Other Asia & the Pacific	371	315	8	13	336	73	0.1	-9.4
Europe	51,837	53,076	1,477	672	55,225	24,159	22.2	6.5
Northern Europe	16,798	15,212	504	166	15,882	6,340	6.4	-5.5
Denmark	870	829	21	7	857	336	0.3	-1.5
Finland	680	1,033	18	9	1,060	436	0.4	55.9
Iceland	34	15	2	0	17	5	0.0	-50.0
Ireland	711	639	27	12	678	237	0.3	-4.6
Norway	1,064	998	32	20	1,050	462	0.4	-1.3
Sweden	1,785	1,647	48	14	1,709	672	0.7	-4.3
United Kingdom	11,654	10,051	356	104	10,511	4,192	4.2	-9.8
Western Europe	25,481	23,554	773	392	24,719	10,401	9.9	-3.0
Austria	950	781	15	7	803	294	0.3	-15.5
Belgium	1,739	1,064	36	24	1,124	459	0.5	-35.4
France	11,215	10,600	491	242	11,333	4,974	4.6	1.1
Germany	8,054	7,655	142	73	7,870	3,217	3.2	-2.3
Luxembourg	67	58	0	8	66	35	0.0	-1.5
Monaco		1	0	0	1	0	0.0	
Netherlands	1,966	1,890	46	21	1,957	801	0.8	-0.5
Switzerland	1,490	1,505	43	17	1,565	621	0.6	5.0
Eastern Europe	5,923	10,627	102	46	10,775	5,861	4.3	81.9
Bulgaria	40	37	0	0	37	16	0.0	-7.5
Czech Republic	405	379	2	4	385	170	0.2	-4.9
Estonia		139	4	1	144	54	0.1	
Hungary	370	336	13	4	353	164	0.1	-4.6
Lithuania		246	3	0	249	135	0.1	
Poland	988	1,063	4	14	1,081	564	0.4	9.4
Romania	155	95	0	0	95	45	0.0	-38.7
Russian Federation	3,575	7,747	71	10	7,828	4,393	3.2	119.0
Slovakia	136	184	1	7	192	91	0.1	41.2
Ukraine	254	401	4	6	411	229	0.2	61.8

International Tourist Arrivals to Cambodia by Country of Residence in March 2011

(by all mean of transportations)

Regions Country of Residence	2010		2011			share		change	
			Purpose of Visit			Total	Female	(%)	(%)
			Tourists	Business	Other			2011*	2011*/10
GRAND TOTAL	228,748	233,832	12,205	2,460	248,497	110,463	100.0	8.6	
Southern Europe	3,379	3,407	91	59	3,557	1,502	1.4	5.3	
Croatia	33	32	3	4	39	16	0.0	18.2	
Greece	161	118	0	1	119	50	0.0	-26.1	
Italy	1,651	1,675	48	19	1,742	686	0.7	5.5	
Portugal	265	283	1	10	294	143	0.1	10.9	
Serbia		36	0	2	38	18	0.0		
Slovenia	52	40	2	0	42	17	0.0	-19.2	
Spain	1,050	1,010	32	14	1,056	472	0.4	0.6	
Turkey	167	213	5	9	227	100	0.1	35.9	
Other Europe	256	276	7	9	292	55	0.1	14.1	
Americas	20,507	19,747	799	477	21,023	9,121	8.5	2.5	
Argentina	230	404	1	4	409	214	0.2	77.8	
Brazil	152	256	2	6	264	140	0.1	73.7	
Canada	4,650	4,461	176	50	4,687	2,082	1.9	0.8	
Chile	161	222	39	14	275	103	0.1	70.8	
Colombia	73	62	2	1	65	37	0.0	-11.0	
Costa Rica		22	2	1	25	14	0.0		
Ecuador		12	0	0	12	7	0.0		
Mexico	253	306	8	1	315	155	0.1	24.5	
Peru	41	28	0	3	31	14	0.0	-24.4	
United States	14,780	13,708	564	390	14,662	6,260	5.9	-0.8	
Uruguay	9	27	1	0	28	8	0.0	211.1	
Other Americas	158	239	4	7	250	87	0.1	58.2	
Africa	376	452	45	9	506	175	0.2	34.6	
Cameroon	34	39	2	1	42	8	0.0	23.5	
Congo		10	0	0	10	4	0.0		
Ghana	37	47	4	2	53	10	0.0	43.2	
Kenya		20	0	2	22	11	0.0		
Liberia		36	1	0	37	2	0.0		
Nigeria	58	19	18	0	37	2	0.0	-36.2	
Sudan	6	1	1	0	2	0	0.0	-66.7	
South Africa	213	209	17	1	227	111	0.1	6.6	
Uganda		26	0	0	26	23	0.0		
Other Africa	28	45	2	3	50	4	0.0	78.6	
Middle East	839	809	17	6	832	258	0.3	-0.8	
Egypt	16	12	0	0	12	1	0.0	-25.0	
Iran	35	52	3	1	56	4	0.0	60.0	
Iraq		4	0	2	6	2	0.0		
Israel	745	624	13	1	638	236	0.3	-14.4	
Kuwait	20	40	0	0	40	3	0.0	100.0	
Oman		7	0	0	7	2	0.0		
Palestine		7	0	0	7	2	0.0		
Qatar		5	0	0	5	0	0.0		
Saudi Arabia	4	9	0	0	9	2	0.0	125.0	
United Arab Emirates		12	0	0	12	1	0.0		
Yemen		10	0	0	10	2	0.0		
Other Middle East	19	27	1	2	30	3	0.0	57.9	

Remark:

- Cambodian Overseas:	6,954
- Cambodian Residence:	42,454
- Cambodian outbound tourist departures:	47,552
- International outbound tourist departures:	250,261

COMPILED BY:

1. Mr. Kong Sopheareak

Director
Statistics & Tourism Information Department
Fax: +855 23 885003
E-mail: kong@mot.gov.kh

2. Mr. Horth Vanny

Chief of Tourism Statistics Office
Compile and data analysis
Tel.: +855 12 827664