



**KINGDOM OF CAMBODIA
NATION RELIGION KING**



TOURISM STATISTICS REPORT

May 2010

MINISTRY OF TOURISM

Statistics and Tourism Information Department

No. A3, Street 169, Sangkat Veal Vong, Khan 7 Makara, Phnom Penh, Cambodia.

Fax: +855 23 885003

E-mail: info@mot.gov.kh

Web site: www.mot.gov.kh

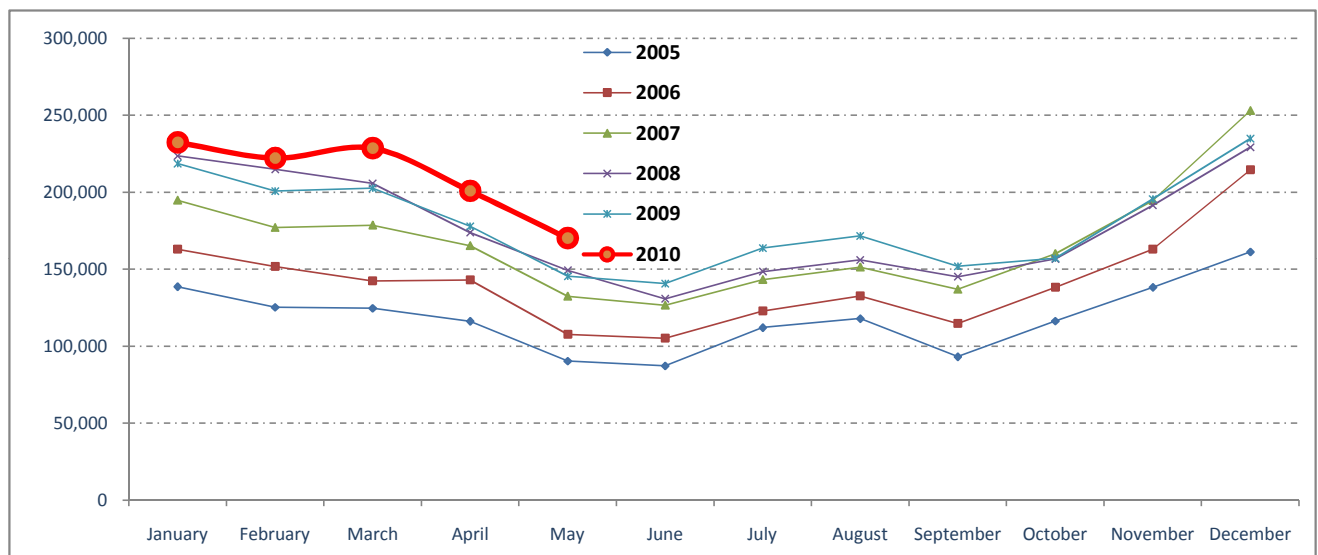
Tourism Highlights

Visitor Arrivals, Average Length of Stay, Hotels Occupancy and Tourism Receipts 1993 - 2009

Years	Visitor Arrivals		Average Length	Hotels Occupancy	Tourism Receipts
	number	change (%)	of Stay (days)	(%)	(million US\$)
1993	118,183	0.00	N/A	N/A	N/A
1994	176,617	49.44%	N/A	N/A	N/A
1995	219,680	24.38%	8.00	37.00	100
1996	260,489	18.58%	7.50	40.00	118
1997	218,843	-15.99%	6.40	30.00	103
1998	289,524	32.30%	5.20	40.00	166
1999	367,743	27.02%	5.50	44.00	190
2000	466,365	26.82%	5.50	45.00	228
2001	604,919	29.71%	5.50	48.00	304
2002	786,524	30.02%	5.80	50.00	379
2003	701,014	-10.87%	5.50	50.00	347
2004	1,055,202	50.53%	6.30	52.00	578
2005	1,421,615	34.72%	6.30	52.00	832
2006	1,700,041	19.59%	6.50	54.79	1,049
2007	2,015,128	18.53%	6.50	54.79	1,400
2008	2,125,465	5.48%	6.65	62.68	1,595
2009	2,161,577	1.70%	6.45	63.57	1,561

International visitor arrivals to Cambodia

Destination	Months	2005	2006	2007	2008	2009	2010	change(%) 2009*/08
Cambodia	Q1	388,670	457,305	550,813	644,205	622,288	683,692	9.87%
<i>Visitor arrivals by</i>	January	138,718	163,047	194,932	223,581	218,691	232,590	6.36%
<i>all means of transportation,</i>	February	125,326	151,821	177,130	214,902	200,789	222,354	10.74%
<i>include day visitors</i>	March	124,626	142,437	178,751	205,722	202,808	228,748	12.79%
	Q2	293,761	356,087	424,536	454,031	464,230	371,129	
	April	116,219	143,069	165,347	173,903	177,955	200,965	12.93%
	May	90,314	107,720	132,512	149,275	145,564	170,164	16.90%
	June	87,228	105,298	126,677	130,853	140,711		
	Q3	323,217	370,620	431,815	449,693	487,422	0	
	July	112,116	123,047	143,310	148,449	163,817		
	August	117,943	132,792	151,478	156,098	171,668		
	September	93,158	114,781	137,027	145,146	151,937		
	Q4	415,967	516,029	607,964	577,536	587,637	0	
	October	116,382	138,296	160,235	156,718	157,105		
	November	138,293	163,068	194,646	191,549	195,570		
	December	161,292	214,665	253,083	229,269	234,962		
	Total	1,421,615	1,700,041	2,015,128	2,125,465	2,161,577	1,054,821	11.53%

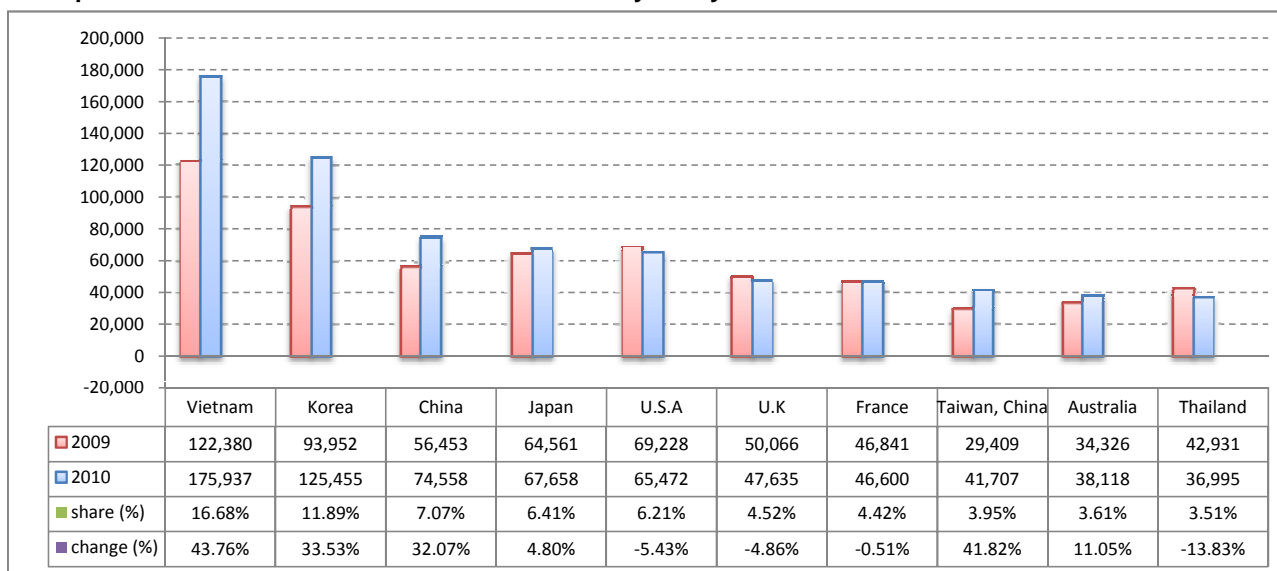


I. Visitor arrivals to Cambodia from January - May was: **1,054,821**

II. Mode of arrivals

	visitors	share (%)
- Air	552,523	52.38
Phnom Penh Int'l Airport	243,907	23.12
Siem Reap Int'l Airport	308,616	29.26
- Land and Water ways	443,555	42.05
Land	409,206	38.79
Boat	34,349	3.26
- Same-day visitors	58,743	5.57
Total	1,054,821	100.00

III. Top ten markets arrivals to Cambodia from January - May in 2010



IV. Visitor arrivals to Cambodia from January - May in 2010

Visitor arrivals			share (%)		change (%)
	2009	2010	2009	2010	2010*/09
Air	492,583	552,523	52.08	52.38	12.17
Phnom Penh Int'l Airport	217,329	243,907	22.98	23.12	12.23
Siem Reap Int'l Airport	275,254	308,616	29.10	29.26	12.12
Land and Water ways	394,747	443,555	41.74	42.05	12.36
Land	354,119	409,206	37.44	38.79	15.56
Boat	40,628	34,349	4.30	3.26	-15.45
Sub-Total	887,330	996,078	93.82	94.43	12.26
Same-day visitors	58,477	58,743	6.18	5.57	0.45
Total	945,807	1,054,821	100.00	100.00	11.53

V. Remark: Percentage share of visitor arrivals at destinations from January - May in 2010

Visitor arrivals			share (%)		change (%)
	2009	2010	2009	2010	2010*/09
Phnom Penh & Other Destinations	499,003	489,018	52.76%	46.36%	-2.00%
Siem Reap Province	446,804	565,803	47.24%	53.64%	26.63%
Total	945,807	1,054,821	100.00%	100.00%	11.53%

VI. Outbound tourist departures from January - May in 2010

Outbound tourists	2009	2010	change (%)
Cambodian outbound tourist departure:	121,630	194,473	59.89%
International outbound tourists departure:	869,538	998,744	14.86%

Visitor Arrivals to Cambodia by Country of Residence from January - May in 2010

(by all means of transportation)

Regions Country of Residence	2010				Total	Females	share	change
	2009	Purpose of Visit					(%)	(%)
		Tourists	Business	Others			2010*	2010*/09
GRAND TOTAL	945,807	978,963	60,401	15,457	1,054,821	459,507	100.00%	11.53%
Asia and the Pacific	573,739	623,987	49,255	8,015	681,257	301,050	64.59%	18.74%
ASEAN	276,548	295,952	17,604	3,849	317,405	136,187	30.09%	14.77%
Brunei Darussalam	143	100	2	64	166	75	0.02%	16.08%
Indonesia	3,588	3,301	1,245	223	4,769	1,940	0.45%	32.92%
Lao PDR	41,482	25,848	80	240	26,168	18,340	2.48%	-36.92%
Malaysia	28,651	29,299	2,354	142	31,795	10,765	3.01%	10.97%
Myanmar	1,045	812	212	41	1,065	413	0.10%	1.91%
Philippines	21,787	20,530	2,446	575	23,551	14,235	2.23%	8.10%
Singapore	14,541	16,144	722	93	16,959	5,980	1.61%	16.63%
Thailand	42,931	29,871	6,153	971	36,995	12,193	3.51%	-13.83%
Vietnam	122,380	170,047	4,390	1,500	175,937	72,246	16.68%	43.76%
Eastern Asia	245,924	281,115	27,612	2,463	311,190	143,002	29.50%	26.54%
China	56,453	57,820	16,209	529	74,558	32,389	7.07%	32.07%
Hong Kong, China	1,457	1,560	139	3	1,702	754	0.16%	16.82%
Japan	64,561	64,329	2,315	1,014	67,658	32,254	6.41%	4.80%
Mongolia	92	81	13	16	110	51	0.01%	19.57%
South Korea	93,952	119,010	5,564	881	125,455	58,498	11.89%	33.53%
Taiwan, China	29,409	38,315	3,372	20	41,707	19,056	3.95%	41.82%
Southern Asia	6,573	5,137	1,440	505	7,082	1,853	0.67%	7.74%
Afghanistan	91	104	8	18	130	33	0.01%	42.86%
Bangladesh	343	332	87	54	473	55	0.04%	37.90%
India	5,082	3,964	1,036	276	5,276	1,500	0.50%	3.82%
Nepal	386	267	86	50	403	109	0.04%	4.40%
Pakistan	369	236	90	53	379	55	0.04%	2.71%
Sri Lanka	302	234	133	54	421	101	0.04%	39.40%
Oceania	39,725	40,179	2,451	1,069	43,699	19,063	4.14%	10.00%
Australia	34,326	35,097	2,114	907	38,118	16,769	3.61%	11.05%
New Zealand	5,399	5,082	337	162	5,581	2,294	0.53%	3.37%
Others Asia & the Pacific	4,969	1,604	148	129	1,881	945	0.18%	-62.15%
Europe	212,465	206,491	6,935	4,344	217,770	88,761	20.65%	2.50%
Northern Europe	75,100	66,692	2,364	1,190	70,246	26,143	6.66%	-6.46%
Denmark	5,318	3,982	117	98	4,197	1,642	0.40%	-21.08%
Finland	3,701	2,839	71	94	3,004	1,046	0.28%	-18.83%
Iceland	108	127	9	0	136	38	0.01%	25.93%
Ireland	3,524	3,127	108	76	3,311	1,198	0.31%	-6.04%
Norway	3,858	4,054	93	89	4,236	1,691	0.40%	9.80%
Sweden	8,525	7,415	203	109	7,727	2,962	0.73%	-9.36%
United Kingdom	50,066	45,148	1,763	724	47,635	17,566	4.52%	-4.86%
Western Europe	102,246	98,058	3,747	2,488	104,293	42,737	9.89%	2.00%
Austria	3,810	4,135	68	41	4,244	1,736	0.40%	11.39%
Belgium	5,321	5,598	215	199	6,012	2,332	0.57%	12.99%
France	46,841	42,883	2,360	1,357	46,600	19,668	4.42%	-0.51%
Germany	29,777	29,196	572	549	30,317	12,182	2.87%	1.81%
Luxembourg	187	288	4	15	307	122	0.03%	64.17%
Netherlands	9,231	9,207	308	206	9,721	3,882	0.92%	5.31%
Switzerland	7,079	6,751	220	121	7,092	2,815	0.67%	0.18%
Eastern Europe	16,212	24,677	344	192	25,213	12,464	2.39%	55.52%
Bulgaria	156	250	4	2	256	136	0.02%	64.10%
Czech	1,261	1,598	6	25	1,629	606	0.15%	29.18%
Hungary	1,331	1,740	18	8	1,766	832	0.17%	32.68%
Poland	2,588	3,746	14	21	3,781	1,895	0.36%	46.10%
Romania	303	751	7	3	761	403	0.07%	151.16%
Russia	9,234	14,815	257	109	15,181	7,681	1.44%	64.40%
Slovakia	512	524	5	19	548	244	0.05%	7.03%
Ukraine	827	1,253	33	5	1,291	667	0.12%	56.11%
Southern Europe	14,219	15,727	375	380	16,482	6,574	1.56%	15.92%
Croatia	137	186	5	12	203	93	0.02%	48.18%
Greece	614	609	8	12	629	252	0.06%	2.44%
Italy	7,333	8,104	158	155	8,417	3,203	0.80%	14.78%
Portugal	990	920	6	17	943	438	0.09%	-4.75%
Slovenia	279	325	3	6	334	154	0.03%	19.71%
Spain	4,082	4,784	111	148	5,043	2,194	0.48%	23.54%
Turkey	784	799	84	30	913	240	0.09%	16.45%
Others Europe	4,688	1,337	105	94	1,536	843	0.15%	-67.24%

Visitor Arrivals to Cambodia by Country of Residence from January - May in 2010

(by all means of transportation)

Regions Country of Residence	2009	2010			Total	Females	share	change
		Purpose of Visit					2010*	2010*/09
		Tourists	Business	Others				
GRAND TOTAL	945,807	978,963	60,401	15,457	1,054,821	459,507	100.00%	11.53%
Americas	95,659	84,245	3,934	2,969	91,148	38,778	8.64%	-4.72%
Argentina	823	1,058	9	18	1,085	583	0.10%	31.83%
Brazil	1,072	1,116	14	16	1,146	585	0.11%	6.90%
Canada	18,286	18,165	812	339	19,316	8,329	1.83%	5.63%
Chile	1,123	1,057	19	7	1,083	520	0.10%	-3.56%
Colombia	304	444	7	16	467	236	0.04%	53.62%
Mexico	1,009	1,224	11	6	1,241	588	0.12%	22.99%
Peru	151	171	5	12	188	88	0.02%	24.50%
United States	69,228	60,000	2,984	2,488	65,472	27,207	6.21%	-5.43%
Uruguay	248	255	0	0	255	150	0.02%	2.82%
Others Americas	3,415	755	73	67	895	492	0.08%	-73.79%
Africa	2,309	1,709	206	72	1,987	635	0.19%	-13.95%
Cameroon	476	214	14	3	231	37	0.02%	-51.47%
Ghana	279	231	7	10	248	37	0.02%	-11.11%
Nigeria	499	212	91	9	312	20	0.03%	-37.47%
Sudan	15	12	0	7	19	2	0.00%	26.67%
South Africa	851	910	78	14	1,002	455	0.09%	17.74%
Others Africa	189	130	16	29	175	84	0.02%	-7.41%
Middle East	3,158	3,788	71	57	3,916	1,460	0.37%	24.00%
Egypt	88	98	2	9	109	17	0.01%	23.86%
Iran	139	198	0	8	206	45	0.02%	48.20%
Israel	2,611	3,200	62	16	3,278	1,331	0.31%	25.55%
Kuwait	162	183	0	5	188	12	0.02%	16.05%
Palestine	0	0	0	0		0		
Saudi Arabia	25	16	0	2	18	1	0.00%	-28.00%
United Arab Emirates	0	0	0	0		0		
Others Middle East	133	93	7	17	117	54	0.01%	-12.03%
Same-day visitors	58,477	58,743	0	0	58,743	28,823	5.57%	0.45%

Remark:

- Cambodian Overseas:	32,994
- Cambodian Residence:	165,576
- Cambodian outbound tourist departures:	194,473
- International outbound tourist departures:	998,744

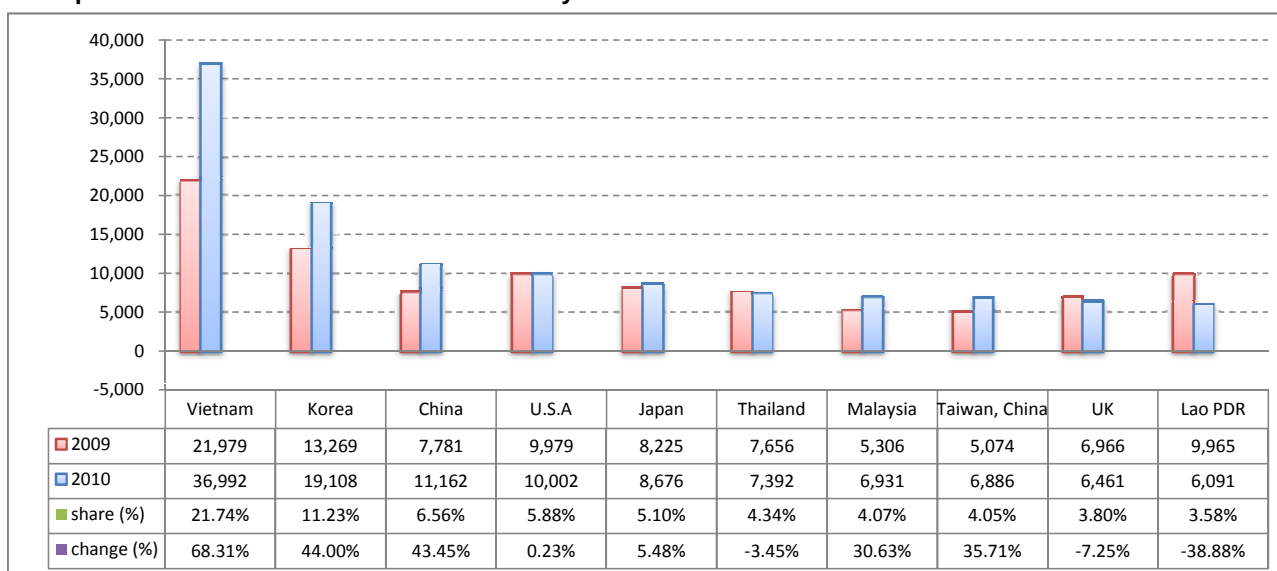
I. Visitor arrivals to Cambodia in May was:

170,164

II. Mode of arrivals

	visitors	share (%)
- Air	83,542	49.09
Phnom Penh Int'l Airport	41,131	24.17
Siem Reap Int'l Airport	42,411	24.92
- Land and Water ways	78,054	45.87
Land	74,933	44.04
Boat	3,121	1.83
- Same-day visitors	8,568	5.04
Total	170,164	100.00

III. Top ten markets arrivals to Cambodia in May 2010



IV. Visitor arrivals to Cambodia in May 2010

Visitor arrivals			share (%)		change (%)
	2009	2010	2009	2010	2010*/09
Air	70,585	83,542	48.49	49.09	18.36
Phnom Penh Int'l Airport	35,850	41,131	24.63	24.17	14.73
Siem Reap Int'l Airport	34,735	42,411	23.86	24.92	22.10
Land and Water ways	65,730	78,054	45.16	45.87	18.75
Land	62,249	74,933	42.76	44.04	20.38
Boat	3,481	3,121	2.39	1.83	-10.34
Sub-Total	136,315	161,596	93.65	94.96	18.55
Same-day visitors	9,249	8,568	6.35	5.04	-7.36
Total	145,564	170,164	100.00	100.00	16.90

V. Remark: Percentage share of visitor arrivals at destinations in May 2010

Visitor arrivals			share (%)		change (%)
	2009	2010	2009	2010	2010*/09
Phnom Penh & Other Destinations	83,389	80,262	57.29%	47.17%	-3.75%
Siem Reap Province	62,175	89,902	42.71%	52.83%	44.60%
Total	145,564	170,164	100.00%	100.00%	16.90%

VI. Outbound tourist departures in May 2010

Outbound tourists	2009	2010	change (%)
Cambodian outbound tourist departure:	30,699	42,055	36.99%
International outbound tourists departure:	146,758	174,019	18.58%

Visitor Arrivals to Cambodia by Country of Residence in May 2010

(by all means of transportation)

Regions Country of Residence	2010						share	change
	2009	Purpose of Visit			Total	Females	(%)	(%)
		Tourists	Business	Others			2010*	2010*/09
GRAND TOTAL	145,564	156,087	11,111	2,966	170,164	71,650	100.00%	16.90%
Asia and the Pacific	95,894	111,554	9,147	1,696	122,397	52,485	71.93%	27.64%
ASEAN	53,182	64,529	3,212	794	68,535	30,294	40.28%	28.87%
Brunei Darussalam	43	11	0	22	33	6	0.02%	-23.26%
Indonesia	697	777	256	56	1,089	439	0.64%	56.24%
Lao PDR	9,965	6,032	6	53	6,091	4,375	3.58%	-38.88%
Malaysia	5,306	6,467	428	36	6,931	2,328	4.07%	30.63%
Myanmar	203	139	33	8	180	69	0.11%	-11.33%
Philippines	4,363	5,006	545	114	5,665	3,391	3.33%	29.84%
Singapore	2,970	4,017	128	17	4,162	1,568	2.45%	40.13%
Thailand	7,656	5,990	1,114	288	7,392	2,739	4.34%	-3.45%
Vietnam	21,979	36,090	702	200	36,992	15,379	21.74%	68.31%
Eastern Asia	34,592	40,353	5,183	558	46,094	19,382	27.09%	33.25%
China	7,781	8,153	2,932	77	11,162	4,174	6.56%	43.45%
Hong Kong, China	230	201	18	0	219	92	0.13%	-4.78%
Japan	8,225	8,057	433	186	8,676	3,739	5.10%	5.48%
Mongolia	13	35	2	6	43	23	0.03%	230.77%
South Korea	13,269	17,680	1,145	283	19,108	8,398	11.23%	44.00%
Taiwan, China	5,074	6,227	653	6	6,886	2,956	4.05%	35.71%
Southern Asia	1,420	1,071	268	103	1,442	379	0.85%	1.55%
Afghanistan	0	6	1	7	14	2	0.01%	
Bangladesh	99	96	16	15	127	11	0.07%	28.28%
India	1,091	806	177	40	1,023	301	0.60%	-6.23%
Nepal	86	61	21	21	103	30	0.06%	19.77%
Pakistan	71	49	19	11	79	13	0.05%	11.27%
Srilanka	73	53	34	9	96	22	0.06%	31.51%
Oceania	5,618	5,229	419	178	5,826	2,324	3.42%	3.70%
Australia	4,725	4,352	358	158	4,868	1,937	2.86%	3.03%
New Zealand	893	877	61	20	958	387	0.56%	7.28%
Others Asia & the Pacific	1,082	372	65	63	500	106	0.29%	-53.79%
Europe	25,399	22,714	1,207	699	24,620	9,424	14.47%	-3.07%
Northern Europe	9,024	8,092	409	183	8,684	3,100	5.10%	-3.77%
Denmark	374	384	22	12	418	157	0.25%	11.76%
Finland	268	243	10	6	259	71	0.15%	-3.36%
Iceland	9	2	0	0	2	0	0.00%	-77.78%
Ireland	587	504	24	14	542	228	0.32%	-7.67%
Norway	333	354	13	13	380	137	0.22%	14.11%
Sweden	487	578	25	19	622	218	0.37%	27.72%
United Kingdom	6,966	6,027	315	119	6,461	2,289	3.80%	-7.25%
Western Europe	11,818	10,096	610	379	11,085	4,215	6.51%	-6.20%
Austria	230	275	9	6	290	98	0.17%	26.09%
Belgium	776	626	31	32	689	263	0.40%	-11.21%
France	5,926	4,899	391	189	5,479	2,151	3.22%	-7.54%
Germany	2,844	2,279	104	99	2,482	901	1.46%	-12.73%
Luxembourg	27	21	0	5	26	6	0.02%	-3.70%
Netherlands	1,271	1,318	46	35	1,399	558	0.82%	10.07%
Switzerland	744	678	29	13	720	238	0.42%	-3.23%
Eastern Europe	1,740	2,279	58	36	2,373	1,213	1.39%	36.38%
Bulgaria	28	18	0	1	19	11	0.01%	-32.14%
Czech	94	92	0	9	101	40	0.06%	7.45%
Hungary	238	60	1	1	62	24	0.04%	-73.95%
Poland	134	329	1	2	332	153	0.20%	147.76%
Romania	54	47	0	0	47	28	0.03%	-12.96%
Russia	1,029	1,493	49	14	1,556	820	0.91%	51.21%
Slovakia	43	63	0	6	69	37	0.04%	60.47%
Ukraine	120	177	7	3	187	100	0.11%	55.83%
Southern Europe	1,776	1,936	85	60	2,081	804	1.22%	17.17%
Croatia	11	10	1	4	15	6	0.01%	36.36%
Greece	64	73	1	2	76	25	0.04%	18.75%
Italy	576	603	34	29	666	214	0.39%	15.63%
Portugal	119	86	0	3	89	41	0.05%	-25.21%
Slovenia	14	14	0	2	16	6	0.01%	14.29%
Spain	931	1,025	12	19	1,056	477	0.62%	13.43%
Turkey	61	125	37	1	163	35	0.10%	167.21%
Others Europe	1,041	311	45	41	397	92	0.23%	-61.86%

Visitor Arrivals to Cambodia by Country of Residence in May 2010

(by all means of transportation)

Regions Country of Residence	2009		2010				share	change
		Tourists	Purpose of Visit		Total	Females	2010*	2010*/09
			Business	Others				
GRAND TOTAL	145,564	156,087	11,111	2,966	170,164	71,650	100.00%	16.90%
Americas	14,226	12,546	686	534	13,766	5,248	8.09%	-3.23%
Argentina	111	110	3	7	120	45	0.07%	8.11%
Brazil	191	185	2	3	190	83	0.11%	-0.52%
Canada	2,375	2,352	124	52	2,528	1,071	1.49%	6.44%
Chile	225	143	0	0	143	66	0.08%	-36.44%
Colombia	68	38	0	2	40	16	0.02%	-41.18%
Mexico	162	263	2	2	267	117	0.16%	64.81%
Peru	34	25	1	1	27	12	0.02%	-20.59%
United States	9,979	9,041	523	438	10,002	3,641	5.88%	0.23%
Uruguay	179	208	0	0	208	119	0.12%	16.20%
Others Americas	902	181	31	29	241	78	0.14%	-73.28%
Africa	458	295	50	17	362	102	0.21%	-20.96%
Cameroon	112	41	3	0	44	10	0.03%	-60.71%
Ghana	55	30	0	1	31	2	0.02%	-43.64%
Nigeria	86	46	23	2	71	8	0.04%	-17.44%
Sudan	2	2	0	0	2	0	0.00%	0.00%
South Africa	176	139	18	3	160	63	0.09%	-9.09%
Others Africa	27	37	6	11	54	19	0.03%	100.00%
Middle East	338	410	21	20	451	110	0.27%	33.43%
Egypt	5	22	0	2	24	2	0.01%	380.00%
Iran	34	65	0	6	71	18	0.04%	108.82%
Israel	257	263	18	4	285	76	0.17%	10.89%
Kuwait	18	27	0	0	27	0	0.02%	50.00%
Palestine	0							
Saudi Arabia	6	4	0	1	5	0	0.00%	-16.67%
United Arab Emirates	0							
Others Middle East	18	29	3	7	39	14	0.02%	116.67%
Same-day visitors	9,249	8,568	0	0	8,568	4,281	5.04%	-7.36%

Remark:

- Cambodian Overseas:	5,120
- Cambodian Residence:	33,639
- Cambodian outbound tourist departures:	42,055
- International outbound tourist departures:	174,019

COMPILED BY:

1. Mr. Kong Sopheareak

Director
Statistics & Tourism Information Department
Fax: +855 23 885003
E-mail: kong@mot.gov.kh

2. Mr. Horth Vanny

Chief of Tourism Statistics Office
Compile and data analysis
Tel.: +855 12 827664