



KINGDOM OF CAMBODIA  
NATION RELIGION KING



# TOURISM STATISTICS REPORT

# February 2026

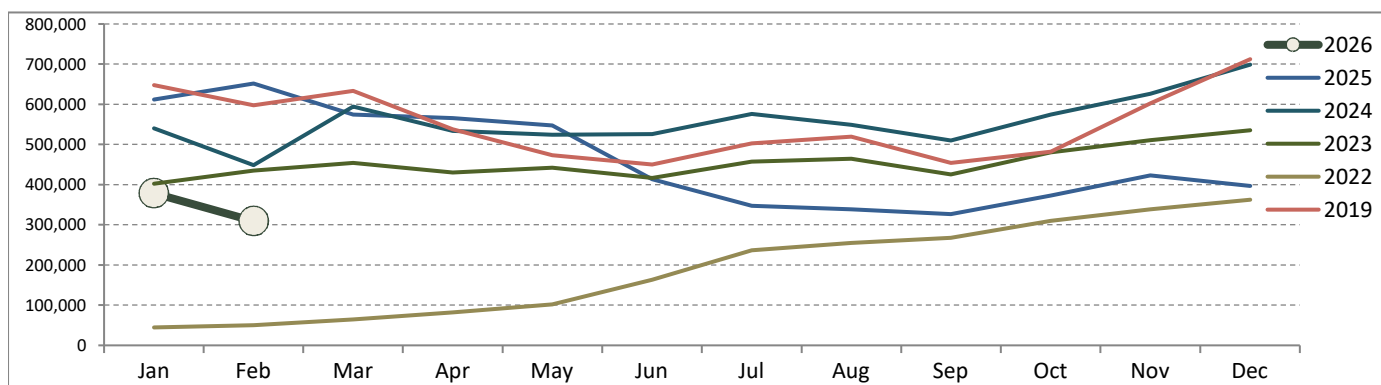
## Tourism Highlights

International Tourist Arrivals, Average Length of Stays, Hotel Occupancy, International Tourism Receipts in 1993 - 2025

Years	Int'l Tourist Arrivals		Average Length	Hotel Occupancy	Int'l Tourism Receipts	Tourism Sector Share
	Number	Change (%)	of Stays (Days)	(%)	(Million USD)	to the GDP (%)
1993	118,183	-	N/A	N/A	N/A	
1994	176,617	49.4	N/A	N/A	N/A	
1995	219,680	24.4	8.0	37.0	100	
1996	260,489	18.6	7.5	40.0	118	
1997	218,843	-16.0	6.4	30.0	103	
1998	286,524	30.9	5.2	40.0	166	
1999	367,743	28.3	5.5	44.0	190	
2000	466,365	26.8	5.5	45.0	228	
2001	604,919	29.7	5.5	48.0	304	
2002	786,524	30.0	5.8	50.0	379	
2003	701,014	-10.9	5.5	50.0	347	
2004	1,055,202	50.5	6.3	52.0	578	13.9
2005	1,421,615	34.7	6.3	52.0	832	14.1
2006	1,700,041	19.6	6.5	54.8	1,049	14.0
2007	2,015,128	18.5	6.5	54.8	1,400	13.9
2008	2,125,465	5.5	6.7	62.7	1,595	12.5
2009	2,161,577	1.7	6.5	63.6	1,561	9.9
2010	2,508,289	16.0	6.5	65.7	1,786	10.8
2011	2,881,862	14.9	6.5	66.2	1,912	10.8
2012	3,584,307	24.4	6.3	68.5	2,210	11.5
2013	4,210,165	17.5	6.8	69.5	2,547	12.0
2014	4,502,775	7.0	6.5	67.6	2,736	12.2
2015	4,775,231	6.1	6.8	70.2	3,012	12.0
2016	5,011,712	5.0	6.3	68.9	3,212	11.9
2017	5,602,157	11.8	6.6	71.3	3,638	12.3
2018	6,201,077	10.7	7.0	72.2	4,375	12.7
2019	6,610,592	6.6	6.2	63.5	4,919	12.1
2020	1,306,143	-80.2	Jan - Mar: 6.2 Apr - Dec: 30.0	Jan - Mar: 78.9 Apr - Dec: 8.3	1,023	3.0
2021	196,495	-85.0	30.0	15.5	184	1.8
2022	2,276,626	1058.6	13.5	75.1	1,415	3.6
2023	5,453,231	139.5	7.6	76.5	3,083	7.5
2024	6,700,125	22.9	7.1	77.8	3,637	9.4
2025	5,569,752	-16.9	6.2	59.1	3,878	9.8

## International Tourist Arrivals to Cambodia

Months	2019	2022	2023	2024	2025	2026	Change (%)				
							23/22	24/23	25/24	26*/19	2026*/25
<b>Q1</b>	<b>1,877,853</b>	<b>159,546</b>	<b>1,291,539</b>	<b>1,582,677</b>	<b>1,838,208</b>	<b>688,499</b>	<b>709.5</b>	<b>22.5</b>	<b>16.1</b>		
Jan	647,206	44,910	402,943	540,023	611,894	378,818	797.2	34.0	13.3	-41.5	-38.1
Feb	597,483	50,411	434,503	448,551	652,091	309,681	761.9	3.2	45.4	-48.2	-52.5
Mar	633,164	64,225	454,093	594,103	574,223		607.0	30.8	-3.3		
<b>Q2</b>	<b>1,460,621</b>	<b>347,216</b>	<b>1,288,393</b>	<b>1,583,820</b>	<b>1,526,176</b>	<b>0</b>	<b>271.1</b>	<b>22.9</b>	<b>-3.6</b>		
Apr	537,656	81,939	430,129	533,932	565,243		424.9	24.1	5.9		
May	472,952	101,979	442,114	524,390	547,373		333.5	18.6	4.4		
Jun	450,013	163,298	416,150	525,498	413,560		154.8	26.3	-21.3		
<b>Q3</b>	<b>1,475,832</b>	<b>759,010</b>	<b>1,346,950</b>	<b>1,634,035</b>	<b>1,013,082</b>	<b>0</b>	<b>77.5</b>	<b>21.3</b>	<b>-38.0</b>		
Jul	502,421	236,697	457,412	575,733	347,492		93.2	25.9	-39.6		
Aug	519,502	254,813	464,637	548,828	338,351		82.3	18.1	-38.4		
Sep	453,909	267,500	424,901	509,474	327,239		58.8	19.9	-35.8		
<b>Q4</b>	<b>1,796,286</b>	<b>1,010,854</b>	<b>1,526,349</b>	<b>1,899,593</b>	<b>1,192,286</b>	<b>0</b>	<b>51.0</b>	<b>24.5</b>	<b>-37.2</b>		
Oct	481,782	310,182	480,330	574,206	372,609		54.9	19.5	-35.1		
Nov	602,042	338,101	510,231	626,319	422,766		50.9	22.8	-32.5		
Dec	712,462	362,571	535,788	699,068	396,911		47.8	30.5	-43.2		
<b>Total</b>	<b>6,610,592</b>	<b>2,276,626</b>	<b>5,453,231</b>	<b>6,700,125</b>	<b>5,569,752</b>	<b>688,499</b>	<b>139.5</b>	<b>22.9</b>	<b>-16.9</b>	<b>-44.7</b>	<b>-45.5</b>



Source: Tourism Statistics Department, MOT.

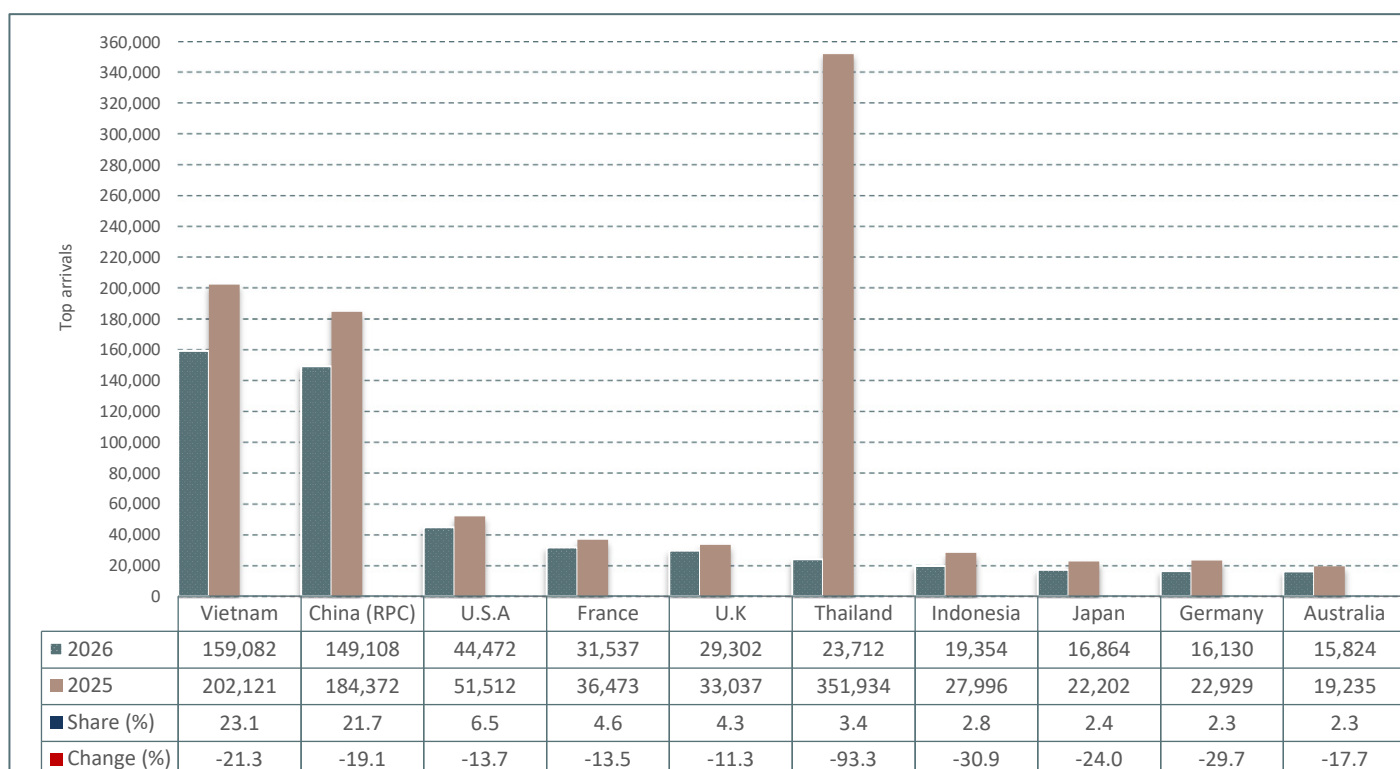
# CAMBODIA: TOURISM STATISTICS REPORT IN THE FIRST TWO MONTHS 2026

## I. INBOUND TOURISM

### 1. International tourist arrivals in January - February 2026

	Inbound tourism				Share (%) 2026*	Change (%)		
	2019	2024	2025	2026		25/24	26*/19	2026*/25
<b>Air</b>	<b>842,679</b>	<b>419,842</b>	<b>535,011</b>	<b>454,324</b>	<b>66.0</b>	<b>27.4</b>	<b>-46.1</b>	<b>-15.1</b>
Techo Int'l Airport (KTI)	367,134	275,249	362,243	293,366	42.6	31.6	-20.1	-19.0
Siem Reap Angkor Int'l Airport (SAI)	400,442	141,943	163,998	147,020	21.4	15.5	-63.3	-10.4
Sihanouk Int'l Airport (KOS)	75,103	2,650	8,770	13,938	2.0	230.9	-81.4	58.9
<b>Land and Waterways</b>	<b>402,010</b>	<b>568,732</b>	<b>728,974</b>	<b>234,175</b>	<b>34.0</b>	<b>28.2</b>	<b>-41.7</b>	<b>-67.9</b>
Land	355,990	545,664	706,264	208,234	30.2	29.4	-41.5	-70.5
Waterways	46,020	23,068	22,710	25,941	3.8	-1.6	-43.6	14.2
<b>Total</b>	<b>1,244,689</b>	<b>988,574</b>	<b>1,263,985</b>	<b>688,499</b>	<b>100.0</b>	<b>27.9</b>	<b>-44.7</b>	<b>-45.5</b>

### 2. Top ten markets arrivals in January - February 2026



## II. OUTBOUND TOURISM

### Outbound tourism in January - February 2026

	Outbound tourism				Share (%)	Change (%)		
	2019	2024	2025	2026		25/24	26*/19	2026*/25
Cambodia Outbound Tourists	300,749	262,580	312,064	160,575	18.8	-46.6	-48.5	
International Tourists Departure	1,137,882	974,869	1,220,750	924,752	25.2	-18.7	-24.2	

## III. INTERNAL TOURISM

### Domestic and foreign visitors' arrivals to the regions in January - February 2026

	Jan-Feb 2025		Jan-Feb 2026		Change (%) 2026*/25	
	KH	FO	KH	FO	KH	FO
Phnom Penh	241,654	423,577	1,974,503	398,135	717.1	-6.0
Siem Reap Angkor	281,600	279,604	241,720	188,885	-14.2	-32.4
Coastal Zone	2,011,739	136,507	1,532,361	136,630	-23.8	0.1
Preah Sihanouk	1,181,906	98,560	747,404	99,377	-36.8	0.8
Eco-tourism Zone	90,770	10,676	98,365	11,459	8.4	7.3
Others	273,868	35,055	294,060	34,140	7.4	-2.6
<b>Total</b>	<b>2,899,631</b>	<b>885,419</b>	<b>4,141,009</b>	<b>769,249</b>	<b>42.8</b>	<b>-13.1</b>

#### Note:

KH: Cambodia visitors

FO: Foreign visitors

**International Tourist Arrivals to Cambodia by Country of Residence in January - February 2026**
*(by all means of transportation)*

Regions Country of Residence	2025	2026					Share 2026* (%)	Change 2026*/25 (%)
		Purposes of Visit			Total	Female		
		Holiday	Business	Others				
<b>Grand Total</b>	<b>1,263,985</b>	<b>489,472</b>	<b>178,218</b>	<b>20,809</b>	<b>688,499</b>	<b>284,031</b>	<b>100.0</b>	<b>-45.5</b>
<b>Asia and the Pacific</b>	<b>992,574</b>	<b>295,666</b>	<b>164,390</b>	<b>7,974</b>	<b>468,030</b>	<b>177,378</b>	<b>68.0</b>	<b>-52.8</b>
<b>ASEAN (Southeast Asia)</b>	<b>673,101</b>	<b>175,806</b>	<b>60,764</b>	<b>578</b>	<b>237,148</b>	<b>103,088</b>	<b>34.4</b>	<b>-64.8</b>
Brunei Darussalam	73	66	7	0	73	27	0.0	0.0
Indonesia	27,996	6,373	12,959	22	19,354	6,153	2.8	-30.9
Lao PDR	48,438	2,771	1,487	12	4,270	2,500	0.6	-91.2
Malaysia	16,911	6,515	4,883	183	11,581	2,970	1.7	-31.5
Myanmar	6,005	2,326	3,313	0	5,639	3,232	0.8	-6.1
Philippines	12,586	5,089	3,404	11	8,504	5,340	1.2	-32.4
Singapore	7,013	4,012	816	82	4,910	1,520	0.7	-30.0
Thailand	351,934	20,317	3,254	141	23,712	11,978	3.4	-93.3
Timor Leste	24	11	12	0	23	12	0.0	-4.2
Vietnam	202,121	128,326	30,629	127	159,082	69,356	23.1	-21.3
<b>Northeast Asia</b>	<b>274,986</b>	<b>95,588</b>	<b>95,417</b>	<b>2,997</b>	<b>194,002</b>	<b>61,322</b>	<b>28.2</b>	<b>-29.5</b>
China	184,372	67,715	80,841	552	149,108	44,930	21.7	-19.1
Hong Kong (China)	45	22	0	0	22	13	0.0	-51.1
Japan	22,202	12,266	4,499	99	16,864	6,453	2.4	-24.0
Korea (ROK)	50,756	9,691	3,775	1,646	15,112	5,320	2.2	-70.2
Macao (China)	0	0	0	0	0	0	0.0	
Mongolia	434	292	41	0	333	145	0.0	-23.3
Taiwan (China)	17,177	5,602	6,261	700	12,563	4,461	1.8	-26.9
<b>Southern Asia</b>	<b>21,959</b>	<b>11,408</b>	<b>6,690</b>	<b>12</b>	<b>18,110</b>	<b>4,310</b>	<b>2.6</b>	<b>-17.5</b>
Afghanistan	40	35	2	8	45	14	0.0	12.5
Bangladesh	3,012	745	2,370	0	3,115	135	0.5	3.4
Bhutan	44	31	37	0	68	24	0.0	54.5
India	12,899	9,327	2,634	4	11,965	3,620	1.7	-7.2
Iran	236	198	20	0	218	59	0.0	-7.6
Maldives	21	43	8	0	51	23	0.0	142.9
Nepal	1,379	315	940	0	1,255	205	0.2	-9.0
Pakistan	3,585	393	422	0	815	98	0.1	-77.3
Sri Lanka	743	321	257	0	578	132	0.1	-22.2
<b>Oceania</b>	<b>22,376</b>	<b>12,806</b>	<b>1,432</b>	<b>4,387</b>	<b>18,625</b>	<b>8,637</b>	<b>2.7</b>	<b>-16.8</b>
Australia	19,235	11,174	1,246	3,404	15,824	7,315	2.3	-17.7
Fiji	96	42	14	0	56	29	0.0	-41.7
New Zealand	3,045	1,590	172	983	2,745	1,293	0.4	-9.9
Other Asia & the Pacific	152	58	87	0	145	21	0.0	-4.6
<b>Europe</b>	<b>195,958</b>	<b>141,281</b>	<b>9,276</b>	<b>4,445</b>	<b>155,002</b>	<b>74,911</b>	<b>22.5</b>	<b>-20.9</b>
<b>Northern Europe</b>	<b>46,155</b>	<b>36,232</b>	<b>2,046</b>	<b>237</b>	<b>38,515</b>	<b>17,838</b>	<b>5.6</b>	<b>-16.6</b>
Denmark	3,474	2,231	76	13	2,320	1,185	0.3	-33.2
Finland	1,311	814	43	15	872	367	0.1	-33.5
Iceland	229	185	3	0	188	91	0.0	-17.9
Ireland	2,406	1,978	116	3	2,097	959	0.3	-12.8
Norway	2,452	1,781	83	33	1,897	977	0.3	-22.6
Sweden	3,246	1,694	95	50	1,839	794	0.3	-43.3
United Kingdom	33,037	27,549	1,630	123	29,302	13,465	4.3	-11.3
<b>Western Europe</b>	<b>76,998</b>	<b>53,671</b>	<b>3,843</b>	<b>4,156</b>	<b>61,670</b>	<b>29,315</b>	<b>9.0</b>	<b>-19.9</b>
Austria	2,759	1,969	64	68	2,101	986	0.3	-23.8
Belgium	3,877	2,770	200	92	3,062	1,447	0.4	-21.0
France	36,473	25,694	2,244	3,599	31,537	15,256	4.6	-13.5
Germany	22,929	15,185	784	161	16,130	7,540	2.3	-29.7
Luxembourg	192	123	3	7	133	57	0.0	-30.7
Monaco	11	7	0	0	7	3	0.0	-36.4
Netherlands	6,273	4,649	312	61	5,022	2,270	0.7	-19.9
Switzerland	4,484	3,274	236	168	3,678	1,756	0.5	-18.0
<b>Central / Eastern Europe</b>	<b>45,701</b>	<b>28,350</b>	<b>1,515</b>	<b>17</b>	<b>29,882</b>	<b>15,256</b>	<b>4.3</b>	<b>-34.6</b>
Azerbaijan	61	62	11	0	73	20	0.0	19.7
Bulgaria	927	1,308	20	0	1,328	740	0.2	43.3
Czech Republic	2,169	1,718	69	1	1,788	801	0.3	-17.6
Estonia	533	336	12	0	348	157	0.1	-34.7
Hungary	1,968	1,513	40	3	1,556	791	0.2	-20.9
Kazakhstan	2,033	893	109	2	1,004	528	0.1	-50.6
Kyrgyzstan	270	284	30	0	314	181	0.0	16.3
Latvia	322	224	9	0	233	101	0.0	-27.6
Lithuania	692	559	10	0	569	304	0.1	-17.8
Poland	9,015	8,737	353	0	9,090	4,608	1.3	0.8
Romania	1,299	1,166	26	1	1,193	645	0.2	-8.2
Russian Federation	23,609	9,268	528	6	9,802	5,081	1.4	-58.5
Slovakia	754	820	24	2	846	421	0.1	12.2
Tajikistan	60	56	17	0	73	30	0.0	21.7
Turkmenistan	137	177	60	0	237	106	0.0	73.0
Ukraine	1,288	965	149	2	1,116	637	0.2	-13.4
Uzbekistan	564	264	48	0	312	105	0.0	-44.7

Source: Tourism Statistics Department, MOT.

**International Tourist Arrivals to Cambodia by Country of Residence in January - February 2026**
*(by all means of transportation)*

Regions Country of Residence	2025	2026					Share 2026* (%)	Change 2026*/25 (%)
		Purposes of Visit			Total	Female		
		Holiday	Business	Others				
<b>Grand Total</b>	<b>1,263,985</b>	<b>489,472</b>	<b>178,218</b>	<b>20,809</b>	<b>688,499</b>	<b>284,031</b>	<b>100.0</b>	<b>-45.5</b>
<b>Southern Europe</b>	<b>18,109</b>	<b>14,942</b>	<b>500</b>	<b>24</b>	<b>15,466</b>	<b>7,684</b>	<b>2.2</b>	<b>-14.6</b>
Croatia	519	467	14	0	481	249	0.1	-7.3
Cyprus	75	98	2	0	100	51	0.0	33.3
Greece	644	542	11	1	554	281	0.1	-14.0
Italy	9,161	8,193	260	14	8,467	4,159	1.2	-7.6
Malta	1,061	67	0	0	67	28	0.0	-93.7
Portugal	1,234	1,008	40	1	1,049	565	0.2	-15.0
Serbia	435	374	14	0	388	184	0.1	-10.8
Slovenia	384	343	17	1	361	168	0.1	-6.0
Spain	4,596	3,850	142	7	3,999	1,999	0.6	-13.0
<b>East Mediterranean Europe</b>	<b>7,530</b>	<b>7,146</b>	<b>995</b>	<b>0</b>	<b>8,141</b>	<b>4,068</b>	<b>1.2</b>	<b>8.1</b>
Israel	4,630	4,880	49	0	4,929	2,582	0.7	6.5
Turkiye	2,900	2,266	946	0	3,212	1,486	0.5	10.8
Other Europe	1,465	940	377	11	1,328	750	0.2	-9.4
<b>Americas</b>	<b>72,005</b>	<b>50,644</b>	<b>3,873</b>	<b>8,387</b>	<b>62,904</b>	<b>30,652</b>	<b>9.1</b>	<b>-12.6</b>
<b>North America</b>	<b>65,548</b>	<b>45,283</b>	<b>3,512</b>	<b>8,355</b>	<b>57,150</b>	<b>27,557</b>	<b>8.3</b>	<b>-12.8</b>
Canada	12,815	9,470	688	1,167	11,325	5,450	1.6	-11.6
Cuba	74	86	20	0	106	51	0.0	43.2
Mexico	1,147	1,199	48	0	1,247	664	0.2	8.7
United States of America	51,512	34,528	2,756	7,188	44,472	21,392	6.5	-13.7
<b>Central America</b>	<b>290</b>	<b>198</b>	<b>25</b>	<b>0</b>	<b>223</b>	<b>140</b>	<b>0.0</b>	<b>-23.1</b>
Costa Rica	251	158	1	0	159	98	0.0	-36.7
El Salvador	13	20	17	0	37	23	0.0	184.6
Honduras	17	11	5	0	16	8	0.0	-5.9
Jamaica	9	9	2	0	11	11	0.0	22.2
<b>South America</b>	<b>5,943</b>	<b>4,907</b>	<b>266</b>	<b>0</b>	<b>5,173</b>	<b>2,794</b>	<b>0.8</b>	<b>-13.0</b>
Argentina	1,682	1,434	15	0	1,449	772	0.2	-13.9
Brazil	2,251	1,734	159	0	1,893	995	0.3	-15.9
Chile	1,012	875	13	0	888	483	0.1	-12.3
Colombia	528	477	46	0	523	284	0.1	-0.9
Ecuador	57	70	1	0	71	41	0.0	24.6
Peru	238	187	15	0	202	139	0.0	-15.1
Uruguay	129	90	9	0	99	54	0.0	-23.3
Venezuela	46	40	8	0	48	26	0.0	4.3
Other America	224	256	70	32	358	161	0.1	59.8
<b>Africa</b>	<b>2,835</b>	<b>1,453</b>	<b>561</b>	<b>3</b>	<b>2,017</b>	<b>983</b>	<b>0.3</b>	<b>-28.9</b>
<b>North Africa</b>	<b>430</b>	<b>343</b>	<b>46</b>	<b>0</b>	<b>389</b>	<b>165</b>	<b>0.1</b>	<b>-9.5</b>
Algeria	59	67	4	0	71	21	0.0	20.3
Morocco	200	163	25	0	188	66	0.0	-6.0
Sudan	44	16	2	0	18	7	0.0	-59.1
Tunisia	127	97	15	0	112	71	0.0	-11.8
<b>Subsaharan Africa</b>	<b>1,881</b>	<b>922</b>	<b>424</b>	<b>2</b>	<b>1,348</b>	<b>691</b>	<b>0.2</b>	<b>-28.3</b>
Cameroon	121	26	20	0	46	18	0.0	-62.0
Congo	8	3	0	0	3	0	0.0	-62.5
Ghana	110	27	14	0	41	9	0.0	-62.7
Kenya	103	77	17	0	94	54	0.0	-8.7
Liberia	25	4	3	0	7	0	0.0	-72.0
Nigeria	112	19	69	0	88	17	0.0	-21.4
South Africa	1,182	708	266	2	976	546	0.1	-17.4
Tanzania	23	16	3	0	19	2	0.0	-17.4
Uganda	149	28	12	0	40	16	0.0	-73.2
Zimbabwe	48	14	20	0	34	29	0.0	-29.2
Other Africa	524	188	91	1	280	127	0.0	-46.6
<b>Middle East</b>	<b>613</b>	<b>428</b>	<b>118</b>	<b>0</b>	<b>546</b>	<b>107</b>	<b>0.1</b>	<b>-10.9</b>
Bahrain	21	4	0	0	4	3	0.0	-81.0
Egypt	170	101	66	0	167	44	0.0	-1.8
Iraq	29	17	4	0	21	2	0.0	-27.6
Jordan	66	41	12	0	53	8	0.0	-19.7
Kuwait	54	19	3	0	22	8	0.0	-59.3
Oman	29	10	0	0	10	0	0.0	-65.5
Palestine	14	8	2	0	10	1	0.0	-28.6
Qatar	4	9	0	0	9	1	0.0	125.0
Saudi Arabia	80	63	12	0	75	15	0.0	-6.3
Syria	24	27	7	0	34	8	0.0	41.7
United Arab Emirates	37	35	3	0	38	7	0.0	2.7
Yemen	28	20	2	0	22	1	0.0	-21.4
Other Middle East	57	74	7	0	81	9	0.0	42.1

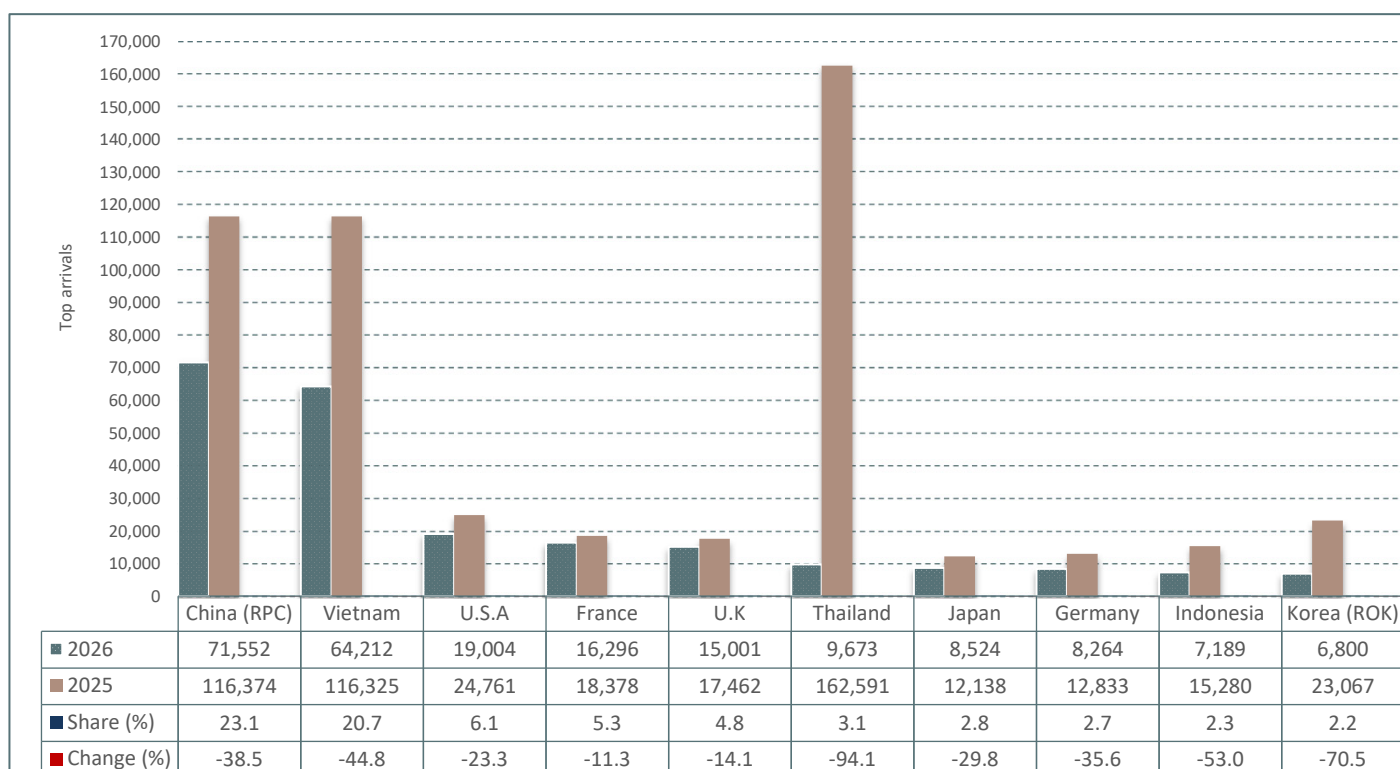
# CAMBODIA: TOURISM STATISTICS REPORT IN FEBRUARY 2026

## I. INBOUND TOURISM

### 1. International tourist arrivals in February 2026

	Inbound tourism				Share (%) 2026*	Change (%)		
	2019	2024	2025	2026		25/24	26*/19	2026*/25
<b>Air</b>	<b>439,273</b>	<b>213,336</b>	<b>289,608</b>	<b>210,813</b>	<b>68.1</b>	<b>35.8</b>	<b>-52.0</b>	<b>-27.2</b>
Techo Int'l Airport (KTI)	194,439	142,267	205,123	134,262	43.4	44.2	-30.9	-34.5
Siem Reap Angkor Int'l Airport (SAI)	197,172	69,589	80,009	69,183	22.3	15.0	-64.9	-13.5
Sihanouk Int'l Airport (KOS)	47,662	1,480	4,476	7,368	2.4	202.4	-84.5	64.6
<b>Land and Waterways</b>	<b>158,210</b>	<b>235,215</b>	<b>362,483</b>	<b>98,868</b>	<b>31.9</b>	<b>54.1</b>	<b>-37.5</b>	<b>-72.7</b>
Land	136,654	222,068	348,665	86,450	27.9	57.0	-36.7	-75.2
Waterways	21,556	13,147	13,818	12,418	4.0	5.1	-42.4	-10.1
<b>Total</b>	<b>597,483</b>	<b>448,551</b>	<b>652,091</b>	<b>309,681</b>	<b>100.0</b>	<b>45.4</b>	<b>-48.2</b>	<b>-52.5</b>

### 2. Top ten markets arrivals in February 2026



## II. OUTBOUND TOURISM

### Outbound tourism in February 2026

	Outbound tourism				Share (%)	Change (%)		
	2019	2024	2025	2026		25/24	26*/19	2026*/25
Cambodia Outbound Tourists	146,448	106,642	152,723	78,681	43.2	-46.3	-48.5	
International Tourists Departure	527,257	428,437	552,984	454,295	29.1	-13.8	-17.8	

## III. INTERNAL TOURISM

### Domestic and foreign visitors' arrivals to the regions in February 2026

	Feb 2025		Feb 2026		Change (%) 2026*/25	
	KH	FO	KH	FO	KH	FO
Phnom Penh	107,537	193,343	810,433	192,560	653.6	-0.4
Siem Reap Angkor	123,500	133,464	137,330	95,394	11.2	-28.5
Coastal Zone	872,563	72,343	691,745	67,567	-20.7	-6.6
Preah Sihanouk	496,120	52,096	238,413	45,273	-51.9	-13.1
Eco-tourism Zone	45,721	6,174	52,667	6,710	15.2	8.7
Others	139,577	18,379	184,074	20,360	31.9	10.8
<b>Total</b>	<b>1,288,898</b>	<b>423,703</b>	<b>1,876,249</b>	<b>382,591</b>	<b>45.6</b>	<b>-9.7</b>

#### Note:

KH: Cambodia visitors

FO: Foreign visitors

**International Tourist Arrivals to Cambodia by Country of Residence in February 2026**
*(by all means of transportation)*

Regions Country of Residence	2025		2026				Share 2026*	Change 2026*/25
			Purposes of Visit			Total		
			Holiday	Business	Others			(%)
<b>Grand Total</b>	<b>652,091</b>	<b>220,924</b>	<b>79,929</b>	<b>8,828</b>	<b>309,681</b>	<b>131,349</b>	<b>100.0</b>	<b>-52.5</b>
<b>Asia and the Pacific</b>	<b>518,178</b>	<b>125,797</b>	<b>74,379</b>	<b>3,249</b>	<b>203,425</b>	<b>79,459</b>	<b>65.7</b>	<b>-60.7</b>
<b>ASEAN (Southeast Asia)</b>	<b>337,504</b>	<b>72,712</b>	<b>23,343</b>	<b>320</b>	<b>96,375</b>	<b>42,980</b>	<b>31.1</b>	<b>-71.4</b>
Brunei Darussalam	28	27	3	0	30	10	0.0	7.1
Indonesia	15,280	2,722	4,458	9	7,189	2,335	2.3	-53.0
Lao PDR	21,614	1,617	545	6	2,168	1,243	0.7	-90.0
Malaysia	9,702	2,771	2,499	117	5,387	1,395	1.7	-44.5
Myanmar	2,812	1,024	842	0	1,866	1,049	0.6	-33.6
Philippines	5,595	2,460	1,139	6	3,605	2,230	1.2	-35.6
Singapore	3,550	1,772	418	42	2,232	721	0.7	-37.1
Thailand	162,591	8,283	1,325	65	9,673	4,916	3.1	-94.1
Timor Leste	7	8	5	0	13	6	0.0	85.7
Vietnam	116,325	52,028	12,109	75	64,212	29,075	20.7	-44.8
<b>Northeast Asia</b>	<b>161,568</b>	<b>43,160</b>	<b>48,578</b>	<b>1,593</b>	<b>93,331</b>	<b>31,657</b>	<b>30.1</b>	<b>-42.2</b>
China	116,374	29,050	42,122	380	71,552	23,549	23.1	-38.5
Hong Kong (China)	30	7	0	0	7	3	0.0	-76.7
Japan	12,138	6,714	1,771	39	8,524	3,384	2.8	-29.8
Korea (ROK)	23,067	4,431	1,672	697	6,800	2,321	2.2	-70.5
Macao (China)	0	0	0	0	0	0	0.0	
Mongolia	94	93	16	0	109	38	0.0	16.0
Taiwan (China)	9,865	2,865	2,997	477	6,339	2,362	2.0	-35.7
<b>Southern Asia</b>	<b>10,120</b>	<b>4,740</b>	<b>1,872</b>	<b>1</b>	<b>6,613</b>	<b>1,694</b>	<b>2.1</b>	<b>-34.7</b>
Afghanistan	24	7	0	0	7	0	0.0	-70.8
Bangladesh	1,538	227	636	0	863	57	0.3	-43.9
Bhutan	21	17	20	0	37	12	0.0	76.2
India	5,844	3,964	871	1	4,836	1,419	1.6	-17.2
Iran	108	117	3	0	120	41	0.0	11.1
Maldives	16	21	3	0	24	9	0.0	50.0
Nepal	741	90	145	0	235	52	0.1	-68.3
Pakistan	1,454	140	110	0	250	38	0.1	-82.8
Sri Lanka	374	157	84	0	241	66	0.1	-35.6
<b>Oceania</b>	<b>8,898</b>	<b>5,159</b>	<b>552</b>	<b>1,335</b>	<b>7,046</b>	<b>3,117</b>	<b>2.3</b>	<b>-20.8</b>
Australia	7,749	4,530	474	1,084	6,088	2,687	2.0	-21.4
Fiji	65	13	3	0	16	8	0.0	-75.4
New Zealand	1,084	616	75	251	942	422	0.3	-13.1
Other Asia & the Pacific	88	26	34	0	60	11	0.0	-31.8
<b>Europe</b>	<b>97,625</b>	<b>72,045</b>	<b>3,776</b>	<b>2,149</b>	<b>77,970</b>	<b>38,255</b>	<b>25.2</b>	<b>-20.1</b>
<b>Northern Europe</b>	<b>23,717</b>	<b>18,573</b>	<b>826</b>	<b>101</b>	<b>19,500</b>	<b>9,187</b>	<b>6.3</b>	<b>-17.8</b>
Denmark	1,781	1,112	35	4	1,151	583	0.4	-35.4
Finland	520	347	20	7	374	164	0.1	-28.1
Iceland	131	109	0	0	109	56	0.0	-16.8
Ireland	1,154	984	47	1	1,032	481	0.3	-10.6
Norway	1,197	899	35	16	950	509	0.3	-20.6
Sweden	1,472	816	46	21	883	393	0.3	-40.0
United Kingdom	17,462	14,306	643	52	15,001	7,001	4.8	-14.1
<b>Western Europe</b>	<b>39,976</b>	<b>28,103</b>	<b>1,616</b>	<b>2,036</b>	<b>31,755</b>	<b>15,332</b>	<b>10.3</b>	<b>-20.6</b>
Austria	1,427	1,054	30	27	1,111	549	0.4	-22.1
Belgium	2,001	1,514	74	48	1,636	770	0.5	-18.2
France	18,378	13,603	932	1,761	16,296	7,995	5.3	-11.3
Germany	12,833	7,852	320	92	8,264	3,937	2.7	-35.6
Luxembourg	112	66	1	7	74	27	0.0	-33.9
Monaco	1	3	0	0	3	1	0.0	200.0
Netherlands	3,051	2,318	160	20	2,498	1,150	0.8	-18.1
Switzerland	2,173	1,693	99	81	1,873	903	0.6	-13.8
<b>Central / Eastern Europe</b>	<b>21,285</b>	<b>13,873</b>	<b>607</b>	<b>2</b>	<b>14,482</b>	<b>7,511</b>	<b>4.7</b>	<b>-32.0</b>
Azerbaijan	24	34	1	0	35	11	0.0	45.8
Bulgaria	609	829	10	0	839	469	0.3	37.8
Czech Republic	1,128	928	41	0	969	451	0.3	-14.1
Estonia	233	139	6	0	145	65	0.0	-37.8
Hungary	923	645	20	0	665	351	0.2	-28.0
Kazakhstan	820	501	33	0	534	286	0.2	-34.9
Kyrgyzstan	110	132	12	0	144	83	0.0	30.9
Latvia	188	87	2	0	89	37	0.0	-52.7
Lithuania	372	290	3	0	293	162	0.1	-21.2
Poland	4,823	4,267	155	0	4,422	2,270	1.4	-8.3
Romania	571	649	12	0	661	383	0.2	15.8
Russian Federation	10,177	4,248	203	1	4,452	2,302	1.4	-56.3
Slovakia	318	406	8	1	415	211	0.1	30.5
Tajikistan	18	23	2	0	25	6	0.0	38.9
Turkmenistan	58	106	22	0	128	59	0.0	120.7
Ukraine	644	456	60	0	516	305	0.2	-19.9
Uzbekistan	269	133	17	0	150	60	0.0	-44.2

Source: Tourism Statistics Department, MOT.

**International Tourist Arrivals to Cambodia by Country of Residence in February 2026**
*(by all means of transportation)*

Regions Country of Residence	2025		2026				Share 2026*	Change 2026*/25
	Purposes of Visit			Total		Female		
	Holiday	Business	Others				(%)	(%)
<b>Grand Total</b>	<b>652,091</b>	<b>220,924</b>	<b>79,929</b>	<b>8,828</b>	<b>309,681</b>	<b>131,349</b>	<b>100.0</b>	<b>-52.5</b>
<b>Southern Europe</b>	<b>8,225</b>	<b>7,403</b>	<b>210</b>	<b>3</b>	<b>7,616</b>	<b>3,883</b>	<b>2.5</b>	<b>-7.4</b>
Croatia	214	190	5	0	195	95	0.1	-8.9
Cyprus	42	60	1	0	61	33	0.0	45.2
Greece	321	278	5	0	283	159	0.1	-11.8
Italy	4,281	4,120	109	3	4,232	2,131	1.4	-1.1
Malta	46	29	0	0	29	11	0.0	-37.0
Portugal	659	501	18	0	519	288	0.2	-21.2
Serbia	202	181	4	0	185	84	0.1	-8.4
Slovenia	212	242	6	0	248	116	0.1	17.0
Spain	2,248	1,802	62	0	1,864	966	0.6	-17.1
<b>East Mediterranean Europe</b>	<b>3,707</b>	<b>3,742</b>	<b>394</b>	<b>0</b>	<b>4,136</b>	<b>2,065</b>	<b>1.3</b>	<b>11.6</b>
Israel	2,429	2,745	30	0	2,775	1,462	0.9	14.2
Turkiye	1,278	997	364	0	1,361	603	0.4	6.5
Other Europe	715	351	123	7	481	277	0.2	-32.7
<b>Americas</b>	<b>34,816</b>	<b>22,258</b>	<b>1,546</b>	<b>3,429</b>	<b>27,233</b>	<b>13,202</b>	<b>8.8</b>	<b>-21.8</b>
<b>North America</b>	<b>32,062</b>	<b>19,933</b>	<b>1,407</b>	<b>3,421</b>	<b>24,761</b>	<b>11,883</b>	<b>8.0</b>	<b>-22.8</b>
Canada	6,710	4,485	299	434	5,218	2,498	1.7	-22.2
Cuba	33	39	12	0	51	23	0.0	54.5
Mexico	558	472	16	0	488	262	0.2	-12.5
United States of America	24,761	14,937	1,080	2,987	19,004	9,100	6.1	-23.3
<b>Central America</b>	<b>81</b>	<b>53</b>	<b>9</b>	<b>0</b>	<b>62</b>	<b>34</b>	<b>0.0</b>	<b>-23.5</b>
Costa Rica	63	31	1	0	32	17	0.0	-49.2
El Salvador	6	11	6	0	17	10	0.0	183.3
Honduras	6	5	1	0	6	3	0.0	0.0
Jamaica	6	6	1	0	7	4	0.0	16.7
<b>South America</b>	<b>2,586</b>	<b>2,133</b>	<b>105</b>	<b>0</b>	<b>2,238</b>	<b>1,213</b>	<b>0.7</b>	<b>-13.5</b>
Argentina	633	512	5	0	517	269	0.2	-18.3
Brazil	918	688	52	0	740	397	0.2	-19.4
Chile	637	597	8	0	605	335	0.2	-5.0
Colombia	184	177	16	0	193	100	0.1	4.9
Ecuador	26	29	1	0	30	18	0.0	15.4
Peru	105	78	10	0	88	58	0.0	-16.2
Uruguay	60	26	8	0	34	18	0.0	-43.3
Venezuela	23	26	5	0	31	18	0.0	34.8
Other America	87	139	25	8	172	72	0.1	97.7
<b>Africa</b>	<b>1,189</b>	<b>628</b>	<b>181</b>	<b>1</b>	<b>810</b>	<b>398</b>	<b>0.3</b>	<b>-31.9</b>
<b>North Africa</b>	<b>167</b>	<b>148</b>	<b>18</b>	<b>0</b>	<b>166</b>	<b>63</b>	<b>0.1</b>	<b>-0.6</b>
Algeria	26	30	3	0	33	9	0.0	26.9
Morocco	74	81	11	0	92	36	0.0	24.3
Sudan	12	4	0	0	4	1	0.0	-66.7
Tunisia	55	33	4	0	37	17	0.0	-32.7
<b>Subsaharan Africa</b>	<b>800</b>	<b>380</b>	<b>143</b>	<b>0</b>	<b>523</b>	<b>280</b>	<b>0.2</b>	<b>-34.6</b>
Cameroon	49	9	6	0	15	7	0.0	-69.4
Congo	1	3	0	0	3	0	0.0	200.0
Ghana	53	8	5	0	13	3	0.0	-75.5
Kenya	45	30	9	0	39	26	0.0	-13.3
Liberia	9	1	2	0	3	0	0.0	-66.7
Nigeria	69	6	39	0	45	8	0.0	-34.8
South Africa	481	302	70	0	372	215	0.1	-22.7
Tanzania	8	9	2	0	11	1	0.0	37.5
Uganda	70	5	3	0	8	2	0.0	-88.6
Zimbabwe	15	7	7	0	14	18	0.0	-6.7
Other Africa	222	100	20	1	121	55	0.0	-45.5
<b>Middle East</b>	<b>283</b>	<b>196</b>	<b>47</b>	<b>0</b>	<b>243</b>	<b>35</b>	<b>0.1</b>	<b>-14.1</b>
Bahrain	7	0	0	0	0	0	0.0	-100.0
Egypt	81	27	17	0	44	12	0.0	-45.7
Iraq	10	10	1	0	11	1	0.0	10.0
Jordan	29	18	10	0	28	6	0.0	-3.4
Kuwait	26	6	2	0	8	4	0.0	-69.2
Oman	14	3	0	0	3	0	0.0	-78.6
Palestine	9	4	1	0	5	1	0.0	-44.4
Qatar	4	4	0	0	4	0	0.0	0.0
Saudi Arabia	37	32	7	0	39	3	0.0	5.4
Syria	11	16	3	0	19	5	0.0	72.7
United Arab Emirates	22	12	1	0	13	1	0.0	-40.9
Yemen	10	6	1	0	7	0	0.0	-30.0
Other Middle East	23	58	4	0	62	2	0.0	169.6