



KINGDOM OF CAMBODIA
NATION RELIGION KING



TOURISM STATISTICS REPORT

January 2026

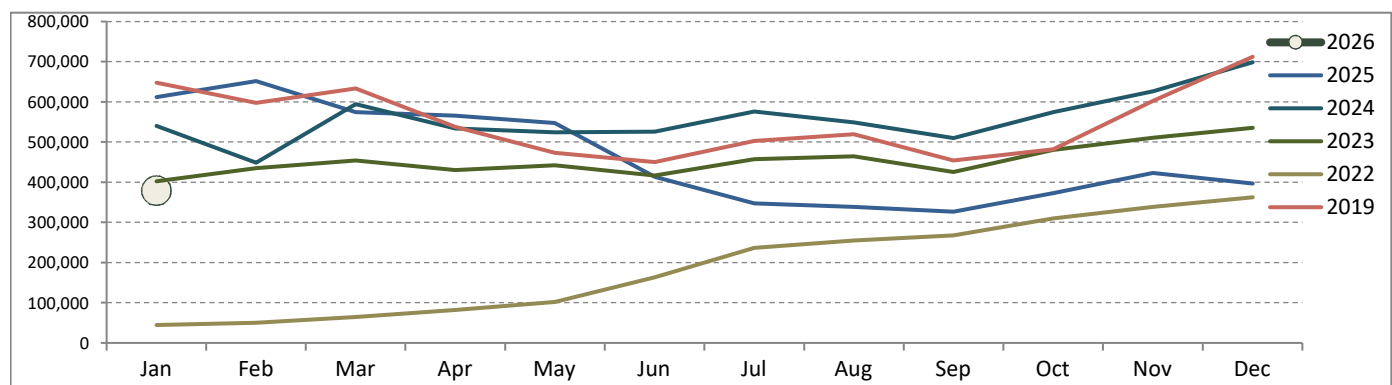
Tourism Highlights

International Tourist Arrivals, Average Length of Stays, Hotel Occupancy, International Tourism Receipts in 1993 - 2025

Years	Int'l Tourist Arrivals		Average Length	Hotel Occupancy	Int'l Tourism Receipts	Tourism Sector Share
	Number	Change (%)	of Stays (Days)	(%)	(Million USD)	to the GDP (%)
1993	118,183	-	N/A	N/A	N/A	
1994	176,617	49.4	N/A	N/A	N/A	
1995	219,680	24.4	8.0	37.0	100	
1996	260,489	18.6	7.5	40.0	118	
1997	218,843	-16.0	6.4	30.0	103	
1998	286,524	30.9	5.2	40.0	166	
1999	367,743	28.3	5.5	44.0	190	
2000	466,365	26.8	5.5	45.0	228	
2001	604,919	29.7	5.5	48.0	304	
2002	786,524	30.0	5.8	50.0	379	
2003	701,014	-10.9	5.5	50.0	347	
2004	1,055,202	50.5	6.3	52.0	578	13.9
2005	1,421,615	34.7	6.3	52.0	832	14.1
2006	1,700,041	19.6	6.5	54.8	1,049	14.0
2007	2,015,128	18.5	6.5	54.8	1,400	13.9
2008	2,125,465	5.5	6.7	62.7	1,595	12.5
2009	2,161,577	1.7	6.5	63.6	1,561	9.9
2010	2,508,289	16.0	6.5	65.7	1,786	10.8
2011	2,881,862	14.9	6.5	66.2	1,912	10.8
2012	3,584,307	24.4	6.3	68.5	2,210	11.5
2013	4,210,165	17.5	6.8	69.5	2,547	12.0
2014	4,502,775	7.0	6.5	67.6	2,736	12.2
2015	4,775,231	6.1	6.8	70.2	3,012	12.0
2016	5,011,712	5.0	6.3	68.9	3,212	11.9
2017	5,602,157	11.8	6.6	71.3	3,638	12.3
2018	6,201,077	10.7	7.0	72.2	4,375	12.7
2019	6,610,592	6.6	6.2	63.5	4,919	12.1
2020	1,306,143	-80.2	Jan - Mar: 6.2 Apr - Dec: 30.0	Jan - Mar: 78.9 Apr - Dec: 8.3	1,023	3.0
2021	196,495	-85.0	30.0	15.5	184	1.8
2022	2,276,626	1058.6	13.5	75.1	1,415	3.6
2023	5,453,231	139.5	7.6	76.5	3,083	7.5
2024	6,700,125	22.9	7.1	77.8	3,637	9.4
2025	5,569,752	-16.9	6.2	59.1	3,878	9.8

International Tourist Arrivals to Cambodia

Months	2019	2022	2023	2024	2025	2026	Change (%)				
							23/22	24/23	25/24	26*/19	2026*/25
Q1	1,877,853	159,546	1,291,539	1,582,677	1,838,208	378,818	709.5	22.5	16.1		
Jan	647,206	44,910	402,943	540,023	611,894	378,818	797.2	34.0	13.3	-41.5	-38.1
Feb	597,483	50,411	434,503	448,551	652,091		761.9	3.2	45.4		
Mar	633,164	64,225	454,093	594,103	574,223		607.0	30.8	-3.3		
Q2	1,460,621	347,216	1,288,393	1,583,820	1,526,176	0	271.1	22.9	-3.6		
Apr	537,656	81,939	430,129	533,932	565,243		424.9	24.1	5.9		
May	472,952	101,979	442,114	524,390	547,373		333.5	18.6	4.4		
Jun	450,013	163,298	416,150	525,498	413,560		154.8	26.3	-21.3		
Q3	1,475,832	759,010	1,346,950	1,634,035	1,013,082	0	77.5	21.3	-38.0		
Jul	502,421	236,697	457,412	575,733	347,492		93.2	25.9	-39.6		
Aug	519,502	254,813	464,637	548,828	338,351		82.3	18.1	-38.4		
Sep	453,909	267,500	424,901	509,474	327,239		58.8	19.9	-35.8		
Q4	1,796,286	1,010,854	1,526,349	1,899,593	1,192,286	0	51.0	24.5	-37.2		
Oct	481,782	310,182	480,330	574,206	372,609		54.9	19.5	-35.1		
Nov	602,042	338,101	510,231	626,319	422,766		50.9	22.8	-32.5		
Dec	712,462	362,571	535,788	699,068	396,911		47.8	30.5	-43.2		
Total	6,610,592	2,276,626	5,453,231	6,700,125	5,569,752	378,818	139.5	22.9	-16.9	-41.5	-38.1



Source: Tourism Statistics Department, MOT.

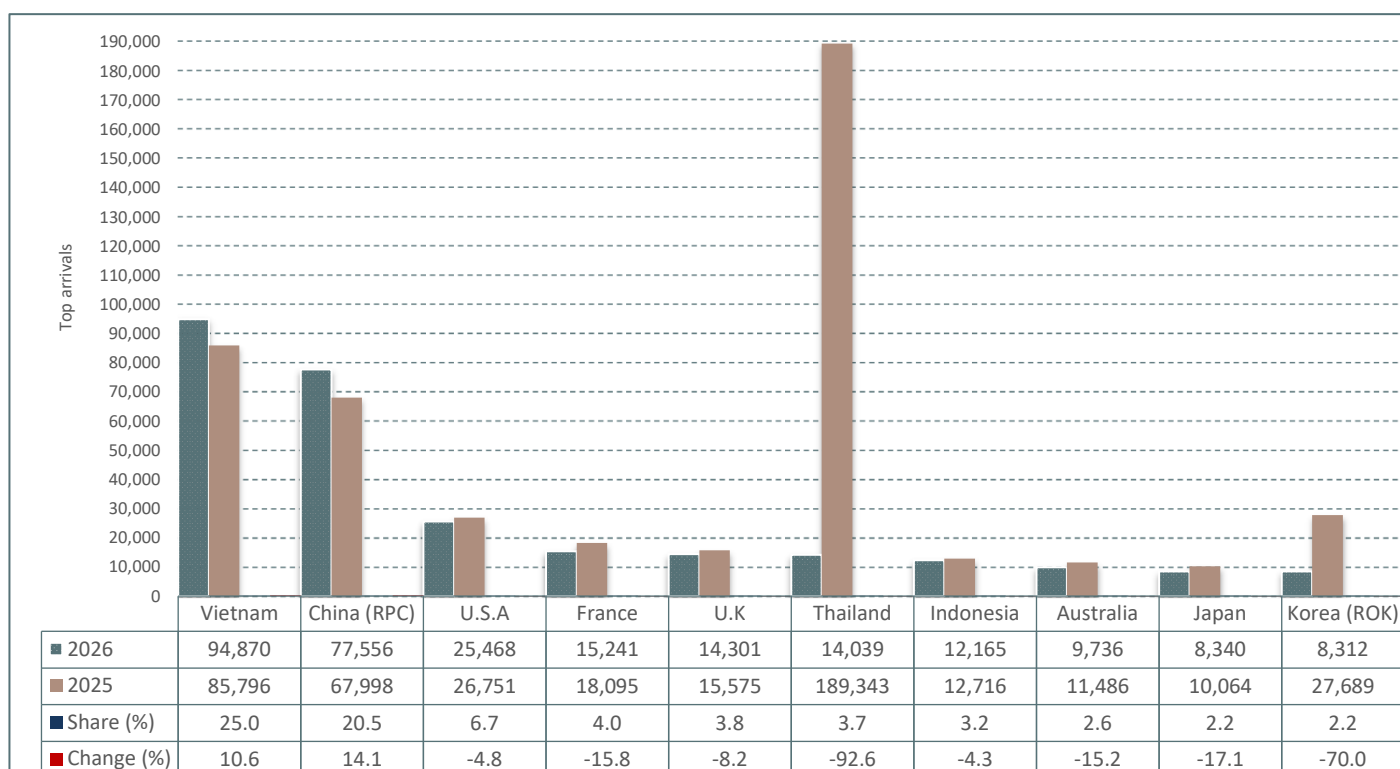
CAMBODIA: TOURISM STATISTICS REPORT IN JANUARY 2026

I. INBOUND TOURISM

1. International tourist arrivals in January 2026

	Inbound tourism				Share (%) 2026*	Change (%)		
	2019	2024	2025	2026		25/24	26*/19	2026*/25
Air	403,406	206,506	245,403	243,511	64.3	18.8	-39.6	-0.8
Techo Int'l Airport (KTI)	172,695	132,982	157,120	159,104	42.0	18.2	-7.9	1.3
Siem Reap Angkor Int'l Airport (SAI)	203,270	72,354	83,989	77,837	20.5	16.1	-61.7	-7.3
Sihanouk Int'l Airport (KOS)	27,441	1,170	4,294	6,570	1.7	267.0	-76.1	53.0
Land and Waterways	243,800	333,517	366,491	135,307	35.7	9.9	-44.5	-63.1
Land	219,336	323,596	357,599	121,784	32.1	10.5	-44.5	-65.9
Waterways	24,464	9,921	8,892	13,523	3.6	-10.4	-44.7	52.1
Total	647,206	540,023	611,894	378,818	100.0	13.3	-41.5	-38.1

2. Top ten markets arrivals in January 2026



II. OUTBOUND TOURISM

Outbound tourism in January 2026

	Outbound tourism				Change (%)		
	2019	2024	2025	2026	25/24	26*/19	2026*/25
Cambodia Outbound Tourists	154,301	155,938	159,341	81,894	2.2	-46.9	-48.6
International Tourists Departure	610,625	546,432	667,766	470,457	22.2	-23.0	-29.5

III. INTERNAL TOURISM

Domestic and foreign visitors' arrivals to the regions in January 2025

	January 2025		January 2026		Change (%) 2026*/25	
	KH	FO	KH	FO	KH	FO
Phnom Penh	134,117	230,234	1,164,070	205,575	768.0	-10.7
Siem Reap Angkor	158,100	146,140	104,390	93,491	-34.0	-36.0
Coastal Zone	1,139,176	64,164	840,616	69,063	-26.2	7.6
Preah Sihanouk	685,786	46,464	508,991	54,104	-25.8	16.4
Eco-tourism Zone	45,049	4,502	45,698	4,375	1.4	-2.8
Others	134,291	16,676	109,986	13,780	-18.1	-17.4
Total	1,610,733	461,716	2,264,760	386,284	40.6	-16.3

Note:

KH: Cambodia visitors

FO: Foreign visitors

International Tourist Arrivals to Cambodia by Country of Residence in January 2026

(by all means of transportation)

Regions Country of Residence	2025	2026					Share 2026* (%)	Change 2026*/25 (%)
		Purposes of Visit			Total	Female		
		Holiday	Business	Others				
Grand Total	611,894	268,548	98,289	11,981	378,818	152,682	100.0	-38.1
Asia and the Pacific	474,396	169,869	90,011	4,725	264,605	97,919	69.9	-44.2
ASEAN (Southeast Asia)	335,597	103,094	37,421	258	140,773	60,108	37.2	-58.1
Brunei Darussalam	45	39	4	0	43	17	0.0	-4.4
Indonesia	12,716	3,651	8,501	13	12,165	3,818	3.2	-4.3
Lao PDR	26,824	1,154	942	6	2,102	1,257	0.6	-92.2
Malaysia	7,209	3,744	2,384	66	6,194	1,575	1.6	-14.1
Myanmar	3,193	1,302	2,471	0	3,773	2,183	1.0	18.2
Philippines	6,991	2,629	2,265	5	4,899	3,110	1.3	-29.9
Singapore	3,463	2,240	398	40	2,678	799	0.7	-22.7
Thailand	189,343	12,034	1,929	76	14,039	7,062	3.7	-92.6
Timor Leste	17	3	7	0	10	6	0.0	-41.2
Vietnam	85,796	76,298	18,520	52	94,870	40,281	25.0	10.6
Northeast Asia	113,418	52,428	46,839	1,404	100,671	29,665	26.6	-11.2
China	67,998	38,665	38,719	172	77,556	21,381	20.5	14.1
Hong Kong (China)	15	15	0	0	15	10	0.0	0.0
Japan	10,064	5,552	2,728	60	8,340	3,069	2.2	-17.1
Korea (ROK)	27,689	5,260	2,103	949	8,312	2,999	2.2	-70.0
Macao (China)	0	0	0	0	0	0	0.0	
Mongolia	340	199	25	0	224	107	0.1	-34.1
Taiwan (China)	7,312	2,737	3,264	223	6,224	2,099	1.6	-14.9
Southern Asia	11,839	6,668	4,818	11	11,497	2,616	3.0	-2.9
Afghanistan	16	28	2	8	38	14	0.0	137.5
Bangladesh	1,474	518	1,734	0	2,252	78	0.6	52.8
Bhutan	23	14	17	0	31	12	0.0	34.8
India	7,055	5,363	1,763	3	7,129	2,201	1.9	1.0
Iran	128	81	17	0	98	18	0.0	-23.4
Maldives	5	22	5	0	27	14	0.0	440.0
Nepal	638	225	795	0	1,020	153	0.3	59.9
Pakistan	2,131	253	312	0	565	60	0.1	-73.5
Sri Lanka	369	164	173	0	337	66	0.1	-8.7
Oceania	13,478	7,647	880	3,052	11,579	5,520	3.1	-14.1
Australia	11,486	6,644	772	2,320	9,736	4,628	2.6	-15.2
Fiji	31	29	11	0	40	21	0.0	29.0
New Zealand	1,961	974	97	732	1,803	871	0.5	-8.1
Other Asia & the Pacific	64	32	53	0	85	10	0.0	32.8
Europe	98,333	69,236	5,500	2,296	77,032	36,656	20.3	-21.7
Northern Europe	22,438	17,659	1,220	136	19,015	8,651	5.0	-15.3
Denmark	1,693	1,119	41	9	1,169	602	0.3	-31.0
Finland	791	467	23	8	498	203	0.1	-37.0
Iceland	98	76	3	0	79	35	0.0	-19.4
Ireland	1,252	994	69	2	1,065	478	0.3	-14.9
Norway	1,255	882	48	17	947	468	0.2	-24.5
Sweden	1,774	878	49	29	956	401	0.3	-46.1
United Kingdom	15,575	13,243	987	71	14,301	6,464	3.8	-8.2
Western Europe	37,022	25,568	2,227	2,120	29,915	13,983	7.9	-19.2
Austria	1,332	915	34	41	990	437	0.3	-25.7
Belgium	1,876	1,256	126	44	1,426	677	0.4	-24.0
France	18,095	12,091	1,312	1,838	15,241	7,261	4.0	-15.8
Germany	10,096	7,333	464	69	7,866	3,603	2.1	-22.1
Luxembourg	80	57	2	0	59	30	0.0	-26.3
Monaco	10	4	0	0	4	2	0.0	-60.0
Netherlands	3,222	2,331	152	41	2,524	1,120	0.7	-21.7
Switzerland	2,311	1,581	137	87	1,805	853	0.5	-21.9
Central / Eastern Europe	24,416	14,477	908	15	15,400	7,745	4.1	-36.9
Azerbaijan	37	28	10	0	38	9	0.0	2.7
Bulgaria	318	479	10	0	489	271	0.1	53.8
Czech Republic	1,041	790	28	1	819	350	0.2	-21.3
Estonia	300	197	6	0	203	92	0.1	-32.3
Hungary	1,045	868	20	3	891	440	0.2	-14.7
Kazakhstan	1,213	392	76	2	470	242	0.1	-61.3
Kyrgyzstan	160	152	18	0	170	98	0.0	6.3
Latvia	134	137	7	0	144	64	0.0	7.5
Lithuania	320	269	7	0	276	142	0.1	-13.8
Poland	4,192	4,470	198	0	4,668	2,338	1.2	11.4
Romania	728	517	14	1	532	262	0.1	-26.9
Russian Federation	13,432	5,020	325	5	5,350	2,779	1.4	-60.2
Slovakia	436	414	16	1	431	210	0.1	-1.1
Tajikistan	42	33	15	0	48	24	0.0	14.3
Turkmenistan	79	71	38	0	109	47	0.0	38.0
Ukraine	644	509	89	2	600	332	0.2	-6.8
Uzbekistan	295	131	31	0	162	45	0.0	-45.1

International Tourist Arrivals to Cambodia by Country of Residence in January 2026
(by all means of transportation)

Regions Country of Residence	2025		2026				Share 2026*	Change 2026*/25
	Purposes of Visit			Total				
	Holiday	Business	Others	Total	Female	(%)	(%)	
Grand Total	611,894	268,548	98,289	11,981	378,818	152,682	100.0	-38.1
Southern Europe	9,884	7,539	290	21	7,850	3,801	2.1	-20.6
Croatia	305	277	9	0	286	154	0.1	-6.2
Cyprus	33	38	1	0	39	18	0.0	18.2
Greece	323	264	6	1	271	122	0.1	-16.1
Italy	4,880	4,073	151	11	4,235	2,028	1.1	-13.2
Malta	1,015	38	0	0	38	17	0.0	-96.3
Portugal	575	507	22	1	530	277	0.1	-7.8
Serbia	233	193	10	0	203	100	0.1	-12.9
Slovenia	172	101	11	1	113	52	0.0	-34.3
Spain	2,348	2,048	80	7	2,135	1,033	0.6	-9.1
East Mediterranean Europe	3,823	3,404	601	0	4,005	2,003	1.1	4.8
Israel	2,201	2,135	19	0	2,154	1,120	0.6	-2.1
Turkiye	1,622	1,269	582	0	1,851	883	0.5	14.1
Other Europe	750	589	254	4	847	473	0.2	12.9
Americas	37,189	28,386	2,327	4,958	35,671	17,450	9.4	-4.1
North America	33,486	25,350	2,105	4,934	32,389	15,674	8.6	-3.3
Canada	6,105	4,985	389	733	6,107	2,952	1.6	0.0
Cuba	41	47	8	0	55	28	0.0	34.1
Mexico	589	727	32	0	759	402	0.2	28.9
United States of America	26,751	19,591	1,676	4,201	25,468	12,292	6.7	-4.8
Central America	209	145	16	0	161	106	0.0	-23.0
Costa Rica	188	127	0	0	127	81	0.0	-32.4
El Salvador	7	9	11	0	20	13	0.0	185.7
Honduras	11	6	4	0	10	5	0.0	-9.1
Jamaica	3	3	1	0	4	7	0.0	33.3
South America	3,357	2,774	161	0	2,935	1,581	0.8	-12.6
Argentina	1,049	922	10	0	932	503	0.2	-11.2
Brazil	1,333	1,046	107	0	1,153	598	0.3	-13.5
Chile	375	278	5	0	283	148	0.1	-24.5
Colombia	344	300	30	0	330	184	0.1	-4.1
Ecuador	31	41	0	0	41	23	0.0	32.3
Peru	133	109	5	0	114	81	0.0	-14.3
Uruguay	69	64	1	0	65	36	0.0	-5.8
Venezuela	23	14	3	0	17	8	0.0	-26.1
Other America	137	117	45	24	186	89	0.0	35.8
Africa	1,646	825	380	2	1,207	585	0.3	-26.7
North Africa	263	195	28	0	223	102	0.1	-15.2
Algeria	33	37	1	0	38	12	0.0	15.2
Morocco	126	82	14	0	96	30	0.0	-23.8
Sudan	32	12	2	0	14	6	0.0	-56.3
Tunisia	72	64	11	0	75	54	0.0	4.2
Subsaharan Africa	1,081	542	281	2	825	411	0.2	-23.7
Cameroon	72	17	14	0	31	11	0.0	-56.9
Congo	7	0	0	0	0	0	0.0	-100.0
Ghana	57	19	9	0	28	6	0.0	-50.9
Kenya	58	47	8	0	55	28	0.0	-5.2
Liberia	16	3	1	0	4	0	0.0	-75.0
Nigeria	43	13	30	0	43	9	0.0	0.0
South Africa	701	406	196	2	604	331	0.2	-13.8
Tanzania	15	7	1	0	8	1	0.0	-46.7
Uganda	79	23	9	0	32	14	0.0	-59.5
Zimbabwe	33	7	13	0	20	11	0.0	-39.4
Other Africa	302	88	71	0	159	72	0.0	-47.4
Middle East	330	232	71	0	303	72	0.1	-8.2
Bahrain	14	4	0	0	4	3	0.0	-71.4
Egypt	89	74	49	0	123	32	0.0	38.2
Iraq	19	7	3	0	10	1	0.0	-47.4
Jordan	37	23	2	0	25	2	0.0	-32.4
Kuwait	28	13	1	0	14	4	0.0	-50.0
Oman	15	7	0	0	7	0	0.0	-53.3
Palestine	5	4	1	0	5	0	0.0	0.0
Qatar	0	5	0	0	5	1	0.0	
Saudi Arabia	43	31	5	0	36	12	0.0	-16.3
Syria	13	11	4	0	15	3	0.0	15.4
United Arab Emirates	15	23	2	0	25	6	0.0	66.7
Yemen	18	14	1	0	15	1	0.0	-16.7
Other Middle East	34	16	3	0	19	7	0.0	-44.1