



KINGDOM OF CAMBODIA
NATION RELIGION KING



TOURISM STATISTICS REPORT

October 2016

MINISTRY OF TOURISM

Statistics and Tourism Information Department

No. A3, Street 169, Sangkat Veal Vong, Khan 7 Makara, Phnom Penh, Cambodia.

Fax: +855 23 885003

E-mail: kong@mot.gov.kh

Web site: www.mot.gov.kh

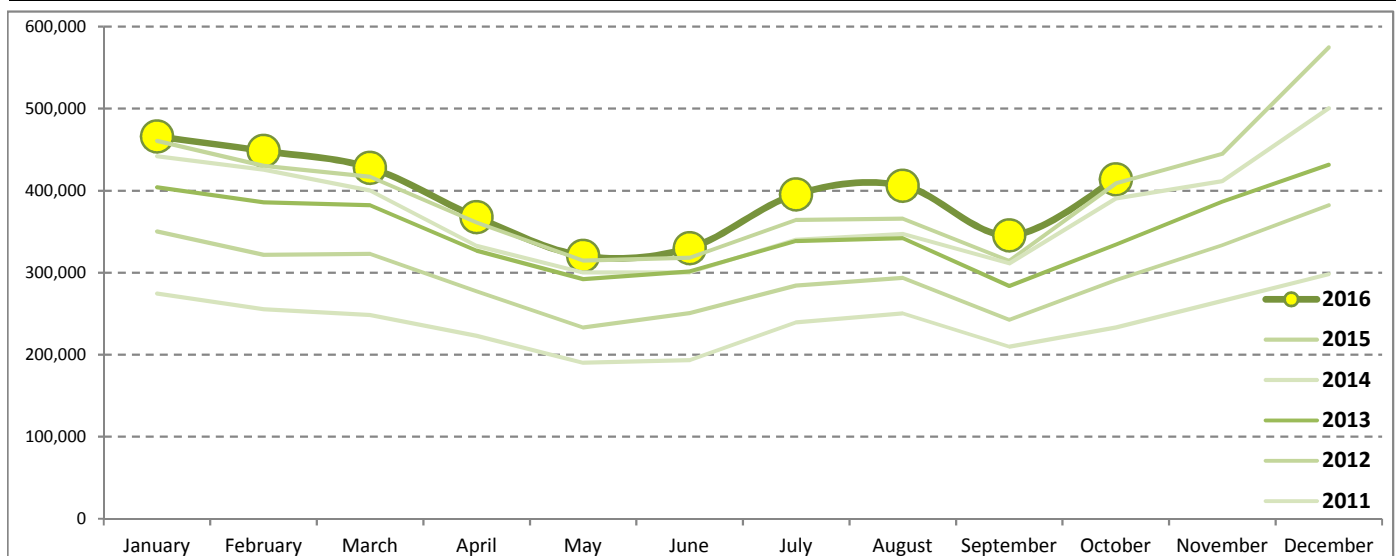
Tourism Highlights

International Tourist Arrivals, Average Length of Stays, Hotel Occupancy & Tourism Receipts 1993 - 2015

Years	Int'l Tourist Arrivals		Average Length	Hotel Occupancy	Tourism Receipts
	Number	Change (%)	of Stays (Days)	(%)	(Million US\$)
1993	118,183	-	N/A	N/A	N/A
1994	176,617	49.4	N/A	N/A	N/A
1995	219,680	24.4	8.00	37.0	100
1996	260,489	18.6	7.50	40.0	118
1997	218,843	-16.0	6.40	30.0	103
1998	286,524	30.9	5.20	40.0	166
1999	367,743	28.3	5.50	44.0	190
2000	466,365	26.8	5.50	45.0	228
2001	604,919	29.7	5.50	48.0	304
2002	786,524	30.0	5.80	50.0	379
2003	701,014	-10.9	5.50	50.0	347
2004	1,055,202	50.5	6.30	52.0	578
2005	1,421,615	34.7	6.30	52.0	832
2006	1,700,041	19.6	6.50	54.8	1,049
2007	2,015,128	18.5	6.50	54.8	1,400
2008	2,125,465	5.5	6.65	62.7	1,595
2009	2,161,577	1.7	6.45	63.6	1,561
2010	2,508,289	16.0	6.45	65.7	1,786
2011	2,881,862	14.9	6.50	66.2	1,912
2012	3,584,307	24.4	6.30	68.5	2,210
2013	4,210,165	17.5	6.75	69.5	2,547
2014	4,502,775	7.0	6.50	67.6	2,736
2015	4,775,231	6.1	6.80	70.2	3,012

International Tourist Arrivals to Cambodia

Months	2011	2012	2013	2014	2015	2016	Change (%)				
							12/11	13/12	14/13	15/14	16*/15
Q1	778,467	995,210	1,172,072	1,267,922	1,307,836	1,342,477	27.8	17.8	8.2	3.1	2.6
January	274,471	350,257	404,106	442,045	460,577	466,086	27.6	15.4	9.4	4.2	1.2
February	255,499	321,870	385,760	425,801	430,207	448,468	26.0	19.8	10.4	1.0	4.2
March	248,497	323,083	382,206	400,076	417,052	427,923	30.0	18.3	4.7	4.2	2.6
Q2	606,562	761,442	920,527	933,446	994,154	1,018,455	25.5	20.9	1.4	6.5	2.4
April	223,032	277,304	327,000	332,690	361,139	367,684	24.3	17.9	1.7	8.6	1.8
May	190,258	233,220	292,115	300,302	314,748	320,601	22.6	25.3	2.8	4.8	1.9
June	193,272	250,918	301,412	300,454	318,267	330,170	29.8	20.1	-0.3	5.9	3.7
Q3	699,760	820,888	964,612	998,690	1,044,880	1,147,483	17.3	17.5	3.5	4.6	9.8
July	239,527	284,282	338,761	340,091	364,325	395,761	18.7	19.2	0.4	7.1	8.6
August	250,429	293,859	342,064	347,211	366,096	406,214	17.3	16.4	1.5	5.4	11.0
September	209,804	242,747	283,787	311,388	314,459	345,508	15.7	16.9	9.7	1.0	9.9
Q4	797,073	1,006,767	1,152,954	1,302,717	1,428,361	414,077	26.3	14.5	13.0	9.6	
October	233,190	290,959	334,410	390,637	408,922	414,077	24.8	14.9	16.8	4.7	1.3
November	265,539	333,482	386,737	411,501	444,640		25.6	16.0	6.4	8.1	
December	298,344	382,326	431,807	500,579	574,799		28.1	12.9	15.9	14.8	
Total	2,881,862	3,584,307	4,210,165	4,502,775	4,775,231	3,922,492	24.4	17.5	7.0	6.1	4.4



Source: Statistics and Tourism Information Department, MOT

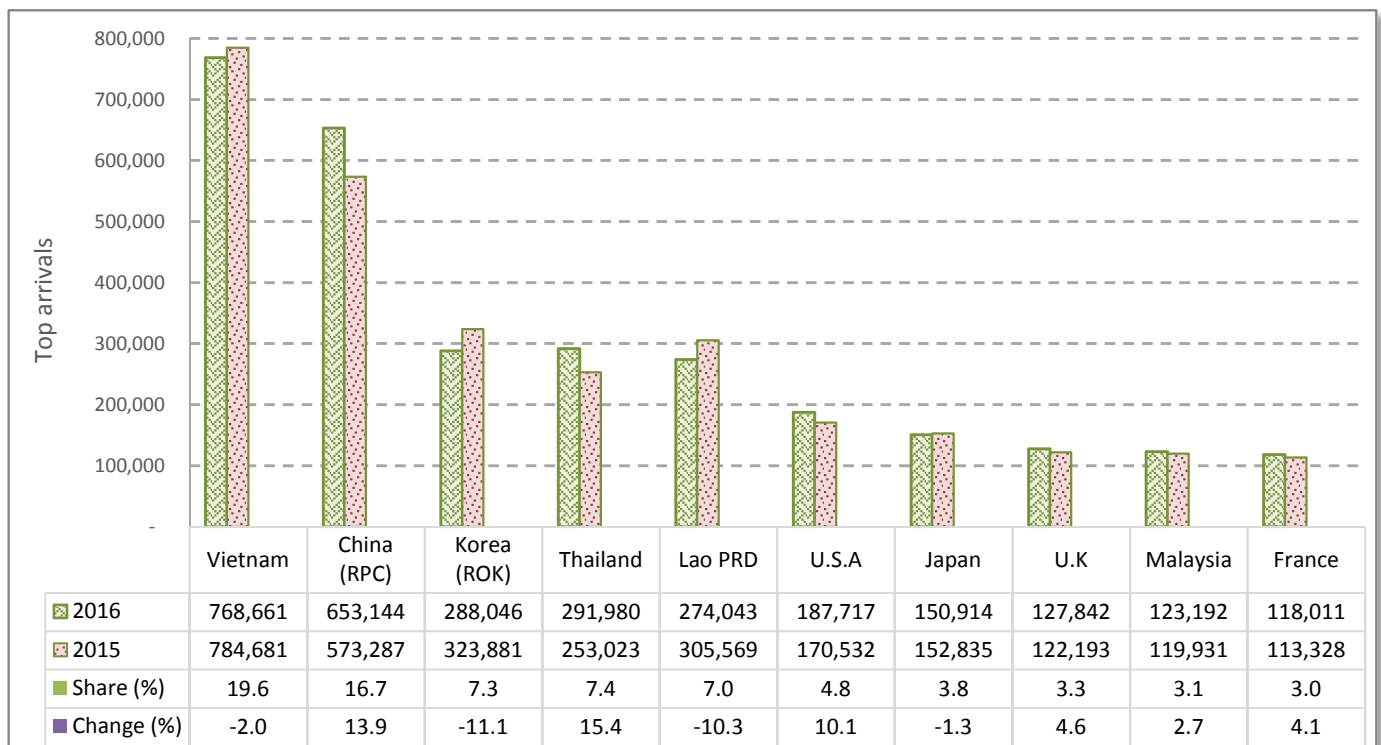
CAMBODIA: TOURISM STATISTICS REPORT IN THE FIRST TEN MONTHS 2016

I. INBOUND TOURISM

1. International tourist arrivals in January - October 2016

	Inbound tourism		Share (%)		Change (%)
	2015	2016	2015	2016	2016*/15
Air	1,986,266	2,130,379	52.9	54.3	7.3
Phnom Penh Int'l Airport (PNH)	864,205	935,894	23.0	23.9	8.3
Siem Reap Int'l Airport (REP)	1,122,061	1,173,647	29.9	29.9	4.6
Kong Keng (KOS)		20,838		0.5	
Land and Waterways	1,769,526	1,792,113	47.1	45.7	1.3
Land	1,656,315	1,668,439	44.1	42.5	0.7
Waterways	113,211	123,674	3.0	3.2	9.2
Total	3,755,792	3,922,492	100.0	100.0	4.4

2. Top ten markets arrivals in January - October 2016



II. OUTBOUND TOURISM

Outbound tourism in January - October 2016

	Outbound tourism		Change (%)
	2015	2016	2016*/15
Cambodian Outbound Tourists	985,739	1,182,670	20.0
International Tourists Departure	3,488,849	3,641,093	4.4

III. INTERNAL TOURISM

Foreign visitor arrivals to the regions in January - October 2016

	Arrivals		Share (%)		Change (%)
	2015	2016	2015	2016	2016*/15
Phnom Penh & Surrounding	2,054,658	2,188,061	47.6	48.6	6.5
Siem Reap Angkor	1,701,134	1,734,791	39.4	38.5	2.0
Coastal Areas	512,234	527,656	11.9	11.7	3.0
Eco-tourism Areas	50,111	52,320	1.2	1.2	4.4
Total	4,318,137	4,502,828	100.0	100.0	4.3

International Tourist Arrivals to Cambodia by Country of Residence in January - October 2016

(by all means of transportation)

Regions Country of Residence	2015	2016			Total	Female	Share	Change
		Purposes of Visit					(%)	(%)
		Holiday	Business	Others			2016*	2016*/15
Grand Total	3,755,792	3,431,865	287,820	202,807	3,922,492	1,680,105	100.0	4.4
Asia and the Pacific	2,937,169	2,594,621	250,233	182,915	3,027,769	1,275,207	77.2	3.1
ASEAN (Southeast Asia)	1,623,260	1,393,060	96,902	160,030	1,649,992	687,093	42.1	1.6
Brunei Darussalam	665	602	10	52	664	248	0.0	-0.2
Indonesia	34,099	23,209	11,710	4,245	39,164	10,208	1.0	14.9
Lao PDR	305,569	263,161	192	10,690	274,043	151,022	7.0	-10.3
Malaysia	119,931	111,716	9,009	2,467	123,192	40,720	3.1	2.7
Myanmar	7,191	8,744	508	997	10,249	4,269	0.3	42.5
Philippines	67,877	68,391	9,849	9,952	88,192	45,488	2.2	29.9
Singapore	50,224	49,394	2,866	1,587	53,847	17,045	1.4	7.2
Thailand	253,023	248,807	17,534	25,639	291,980	106,657	7.4	15.4
Vietnam	784,681	619,036	45,224	104,401	768,661	311,436	19.6	-2.0
Northeast Asia	1,152,083	1,035,534	142,352	14,615	1,192,501	511,042	30.4	3.5
China	573,287	553,005	91,691	8,448	653,144	290,309	16.7	13.9
Hong Kong (China)	10,264	12,696	207	75	12,978	6,066	0.3	26.4
Japan	152,835	128,447	19,988	2,479	150,914	56,906	3.8	-1.3
Korea (ROK)	323,881	269,615	15,109	3,322	288,046	123,219	7.3	-11.1
Macau (China)	333	266	22	44	332	96	0.0	-0.3
Mongolia	367	314	35	41	390	228	0.0	6.3
Taiwan (China)	91,116	71,191	15,300	206	86,697	34,218	2.2	-4.8
Southern Asia	35,241	34,045	4,443	4,178	42,666	11,370	1.1	21.1
Afghanistan	89	84	5	29	118	30	0.0	32.6
Bangladesh	1,743	1,024	318	169	1,511	237	0.0	-13.3
Bhutan	154	97	6	69	172	59	0.0	11.7
India	28,694	29,058	2,942	3,589	35,589	9,837	0.9	24.0
Nepal	1,773	1,598	276	103	1,977	526	0.1	11.5
Pakistan	1,212	836	366	100	1,302	225	0.0	7.4
Sri Lanka	1,576	1,348	530	119	1,997	456	0.1	26.7
Oceania	121,925	127,927	6,355	1,445	135,727	62,888	3.5	11.3
Australia	103,885	109,615	5,351	1,289	116,255	53,886	3.0	11.9
Fiji	159	104	26	32	162	53	0.0	1.9
New Zealand	17,881	18,208	978	124	19,310	8,949	0.5	8.0
Other Asia & the Pacific	4,660	4,055	181	2,647	6,883	2,814	0.2	47.7
Europe	552,605	561,050	24,961	11,132	597,143	270,857	15.2	8.1
Northern Europe	166,520	163,236	8,049	2,128	173,413	75,569	4.4	4.1
Denmark	9,369	8,945	329	136	9,410	4,072	0.2	0.4
Finland	5,149	4,293	258	90	4,641	1,876	0.1	-9.9
Iceland	611	599	12	25	636	243	0.0	4.1
Ireland	9,298	9,421	379	83	9,883	4,644	0.3	6.3
Norway	7,572	7,508	218	80	7,806	3,521	0.2	3.1
Sweden	12,328	12,477	552	166	13,195	5,538	0.3	7.0
United Kingdom	122,193	119,993	6,301	1,548	127,842	55,675	3.3	4.6
Western Europe	241,464	252,818	12,245	4,477	269,540	120,934	6.9	11.6
Austria	7,732	8,547	187	69	8,803	3,920	0.2	13.9
Belgium	13,140	12,703	625	303	13,631	5,800	0.3	3.7
France	113,328	108,515	7,275	2,221	118,011	53,239	3.0	4.1
Germany	67,471	79,671	2,096	1,265	83,032	37,417	2.1	23.1
Luxembourg	518	580	12	16	608	251	0.0	17.4
Monaco	71	43	3	14	60	13	0.0	-15.5
Netherlands	22,760	22,999	1,154	316	24,469	11,052	0.6	7.5
Switzerland	16,444	19,760	893	273	20,926	9,242	0.5	27.3
Central / Eastern Europe	74,469	68,735	2,306	1,501	72,542	37,277	1.8	-2.6
Bulgaria	1,250	1,220	30	60	1,310	654	0.0	4.8
Czech Republic	4,236	4,016	71	57	4,144	1,855	0.1	-2.2
Estonia	1,317	1,234	32	19	1,285	567	0.0	-2.4
Hungary	3,161	3,373	118	49	3,540	1,693	0.1	12.0
Kazakhstan	1,861	1,120	193	20	1,333	688	0.0	-28.4
Kyrgyzstan	134	105	17	19	141	62	0.0	5.2
Latvia	704	613	34	20	667	306	0.0	-5.3
Lithuania	1,372	1,416	57	25	1,498	739	0.0	9.2
Poland	9,928	10,712	193	90	10,995	5,438	0.3	10.7
Romania	1,784	1,730	57	69	1,856	1,027	0.0	4.0
Russian Federation	42,096	37,436	1,217	447	39,100	21,047	1.0	-7.1
Slovakia	1,776	1,926	54	28	2,008	935	0.1	13.1
Ukraine	4,232	3,553	186	568	4,307	2,108	0.1	1.8
Uzbekistan	618	281	47	30	358	158	0.0	-42.1

Source: Statistics and Tourism Information Department, MOT

International Tourist Arrivals to Cambodia by Country of Residence in January - October 2016

(by all means of transportation)

Regions Country of Residence	2015	2016			Total	Female	Share	Change
		Purposes of Visit					(%)	(%)
		Holiday	Business	Others			2016*	2016*/15
Grand Total	3,755,792	3,431,865	287,820	202,807	3,922,492	1,680,105	100.0	4.4
Southern Europe	66,552	72,667	2,229	1,403	76,299	34,934	1.9	14.6
Croatia	950	769	33	77	879	388	0.0	-7.5
Greece	1,228	1,122	67	99	1,288	513	0.0	4.9
Italy	24,177	26,529	976	408	27,913	11,977	0.7	15.5
Malta	386	410	6	21	437	196	0.0	13.2
Portugal	4,403	5,236	156	122	5,514	2,681	0.1	25.2
Serbia	622	525	29	258	812	376	0.0	30.5
Slovenia	944	872	52	16	940	436	0.0	-0.4
Spain	29,290	32,693	489	164	33,346	16,365	0.9	13.8
Turkey	4,552	4,511	421	238	5,170	2,002	0.1	13.6
Other Europe	3,600	3,594	132	1,623	5,349	2,143	0.1	48.6
Americas	247,672	257,054	10,729	7,415	275,198	125,721	7.0	11.1
North America	220,722	224,612	10,297	5,856	240,765	109,168	6.1	9.1
Canada	44,569	44,152	2,071	517	46,740	21,942	1.2	4.9
Mexico	5,621	6,152	58	98	6,308	3,234	0.2	12.2
United States	170,532	174,308	8,168	5,241	187,717	83,992	4.8	10.1
Central America	591	626	26	63	715	280	0.0	21.0
Costa Rica	366	440	7	15	462	214	0.0	26.2
Honduras	103	124	13	33	170	32	0.0	65.0
Jamaica	122	62	6	15	83	34	0.0	-32.0
South America	23,769	29,290	318	741	30,349	14,873	0.8	27.7
Argentina	6,274	11,318	47	50	11,415	5,617	0.3	81.9
Brazil	8,109	7,584	145	107	7,836	3,782	0.2	-3.4
Chile	4,217	5,213	32	50	5,295	2,770	0.1	25.6
Colombia	2,370	2,504	55	34	2,593	1,296	0.1	9.4
Ecuador	453	451	11	24	486	235	0.0	7.3
Peru	815	887	8	437	1,332	483	0.0	63.4
Uruguay	906	1,026	9	18	1,053	531	0.0	16.2
Venezuela	625	307	11	21	339	159	0.0	-45.8
Other America	2,590	2,526	88	755	3,369	1,400	0.1	30.1
Africa	6,964	6,138	1,247	976	8,361	3,243	0.2	20.1
North Africa	677	721	55	61	837	343	0.0	23.6
Morocco	407	353	43	20	416	181	0.0	2.2
Sudan	114	81	2	22	105	23	0.0	-7.9
Tunisia	156	287	10	19	316	139	0.0	102.6
Subsaharan Africa	5,728	4,844	1,151	741	6,736	2,640	0.2	17.6
Cameroon	176	76	12	12	100	30	0.0	-43.2
Congo	87	61	8	25	94	29	0.0	8.0
Ghana	80	82	14	70	166	36	0.0	107.5
Kenya	248	247	24	41	312	159	0.0	25.8
Liberia	48	25	1	13	39	7	0.0	-18.8
Nigeria	892	496	691	38	1,225	102	0.0	37.3
South Africa	3,926	3,570	363	237	4,170	2,081	0.1	6.2
Tanzania	75	103	7	259	369	62	0.0	392.0
Uganda	104	84	5	12	101	44	0.0	-2.9
Zimbabwe	92	100	26	34	160	90	0.0	73.9
Other Africa	559	573	41	174	788	260	0.0	41.0
Middle East	11,382	13,002	650	369	14,021	5,077	0.4	23.2
Egypt	485	481	47	21	549	148	0.0	13.2
Iran	398	413	32	30	475	132	0.0	19.3
Iraq	125	104	13	15	132	22	0.0	5.6
Israel	7,360	8,678	214	47	8,939	3,958	0.2	21.5
Jordan	297	739	201	16	956	197	0.0	221.9
Kuwait	844	627	7	27	661	47	0.0	-21.7
Oman	177	156	1	13	170	35	0.0	-4.0
Palestine	61	60	5	13	78	22	0.0	27.9
Qatar	102	56	5	14	75	17	0.0	-26.5
Saudi Arabia	266	245	16	26	287	26	0.0	7.9
Syria	222	472	63	16	551	135	0.0	148.2
United Arab Emirates	339	279	4	16	299	109	0.0	-11.8
Yemen	268	235	10	16	261	43	0.0	-2.6
Other Middle East	438	457	32	99	588	186	0.0	34.2

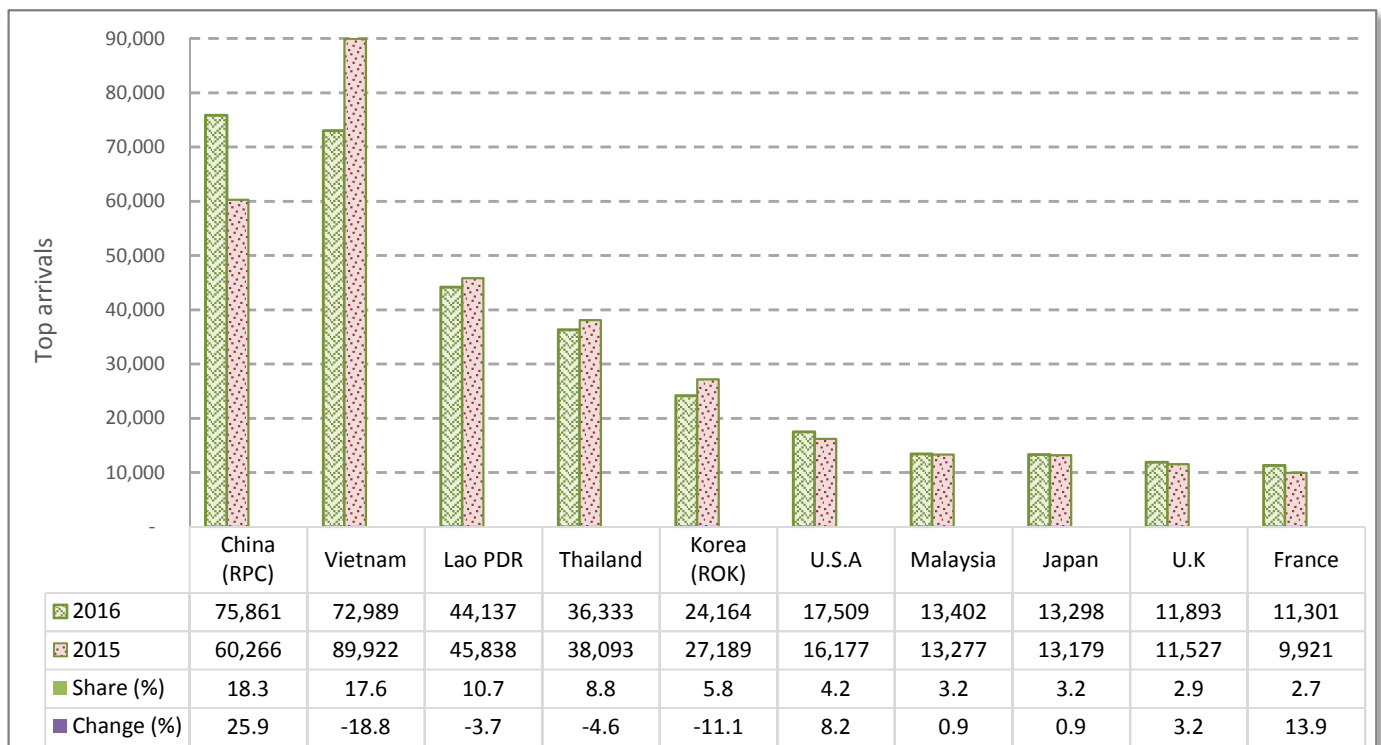
CAMBODIA: TOURISM STATISTICS REPORT IN OCTOBER 2016

I. INBOUND TOURISM

1. International tourist arrivals in October 2016

	Inbound tourism		Share (%)		Change (%)
	2015	2016	2015	2016	2016*/15
Air	191,602	223,403	46.9	54.0	16.6
Phnom Penh Int'l Airport (PNH)	87,099	101,708	21.3	24.6	16.8
Siem Reap Int'l Airport (REP)	104,503	116,182	25.6	28.1	11.2
Kong Keng (KOS)		5,513		1.3	
Land and Waterways	217,320	190,674	53.1	46.0	-12.3
Land	205,223	182,408	50.2	44.1	-11.1
Waterways	12,097	8,266	3.0	2.0	-31.7
Total	408,922	414,077	100.0	100.0	1.3

2. Top ten markets arrivals in October 2016



II. OUTBOUND TOURISM

Outbound tourism in October 2016

	Outbound tourism		Change (%)
	2015	2016	2016*/15
Cambodian Outbound Tourists	121,502	123,149	1.4
International Tourists Departure	297,967	345,779	16.0

III. INTERNAL TOURISM

Foreign visitor arrivals to the regions in October 2016

	Arrivals		Share (%)		Change (%)
	2015	2016	2015	2016	2016*/15
Phnom Penh & Surrounding	254,714	247,878	56.1	53.2	-2.7
Siem Reap Angkor	154,208	166,199	33.9	35.7	7.8
Coastal Areas	41,835	47,584	9.2	10.2	13.7
Eco-tourism Areas	3,650	4,483	0.8	1.0	22.8
Total	454,407	466,144	100.0	100.0	2.6

International Tourist Arrivals to Cambodia by Country of Residence in October 2016

(by all means of transportation)

Regions Country of Residence	2015	2016			Total	Female	Share	Change
		Purposes of Visit					(%)	(%)
		Holiday	Business	Others			2016*	2016*/15
Grand Total	408,922	361,055	32,436	20,586	414,077	173,539	100.0	1.3
Asia and the Pacific	333,539	282,619	28,248	18,566	329,433	135,136	79.6	-1.2
ASEAN (Southeast Asia)	204,320	160,501	10,934	15,313	186,748	74,958	45.1	-8.6
Brunei Darussalam	63	82	1	1	84	28	0.0	33.3
Indonesia	4,040	2,571	1,190	305	4,066	993	1.0	0.6
Lao PDR	45,838	43,144	21	972	44,137	22,966	10.7	-3.7
Malaysia	13,277	11,934	1,067	401	13,402	4,355	3.2	0.9
Myanmar	650	914	66	88	1,068	490	0.3	64.3
Philippines	7,024	7,639	1,104	382	9,125	5,078	2.2	29.9
Singapore	5,413	4,852	346	346	5,544	1,545	1.3	2.4
Thailand	38,093	32,133	1,985	2,215	36,333	12,613	8.8	-4.6
Vietnam	89,922	57,232	5,154	10,603	72,989	26,890	17.6	-18.8
Northeast Asia	110,967	104,634	16,101	2,320	123,055	51,931	29.7	10.9
China	60,266	64,317	10,339	1,205	75,861	33,760	18.3	25.9
Hong Kong (China)	1,126	1,165	10	12	1,187	541	0.3	5.4
Japan	13,179	10,620	2,198	480	13,298	4,531	3.2	0.9
Korea (ROK)	27,189	21,912	1,704	548	24,164	9,998	5.8	-11.1
Macau (China)	16	36	5	7	48	12	0.0	200.0
Mongolia	36	26	2	10	38	24	0.0	5.6
Taiwan (China)	9,155	6,558	1,843	58	8,459	3,065	2.0	-7.6
Southern Asia	4,838	4,369	470	361	5,200	1,675	1.3	7.5
Afghanistan	5	12	1	5	18	3	0.0	260.0
Bangladesh	189	91	37	24	152	33	0.0	-19.6
Bhutan	10	3	1	9	13	3	0.0	30.0
India	4,162	3,743	297	303	4,343	1,487	1.0	4.3
Nepal	148	246	36	6	288	92	0.1	94.6
Pakistan	141	119	32	8	159	24	0.0	12.8
Sri Lanka	183	155	66	6	227	33	0.1	24.0
Oceania	12,370	12,258	723	145	13,126	5,990	3.2	6.1
Australia	10,623	10,375	620	122	11,117	5,023	2.7	4.7
Fiji	22	12	4	7	23	6	0.0	4.5
New Zealand	1,725	1,871	99	16	1,986	961	0.5	15.1
Other Asia & the Pacific	1,044	857	20	427	1,304	582	0.3	24.9
Europe	50,031	51,760	2,804	1,145	55,709	25,648	13.5	11.3
Northern Europe	15,308	14,698	908	249	15,855	6,981	3.8	3.6
Denmark	682	739	36	20	795	366	0.2	16.6
Finland	418	319	47	13	379	163	0.1	-9.3
Iceland	108	88	1	5	94	22	0.0	-13.0
Ireland	754	857	46	7	910	396	0.2	20.7
Norway	764	701	23	19	743	294	0.2	-2.7
Sweden	1,055	957	59	25	1,041	450	0.3	-1.3
United Kingdom	11,527	11,037	696	160	11,893	5,290	2.9	3.2
Western Europe	21,787	23,049	1,385	426	24,860	11,367	6.0	14.1
Austria	517	674	25	6	705	333	0.2	36.4
Belgium	1,118	1,059	59	25	1,143	503	0.3	2.2
France	9,921	10,212	828	261	11,301	5,132	2.7	13.9
Germany	6,619	7,500	246	80	7,826	3,614	1.9	18.2
Luxembourg	40	35	1	1	37	10	0.0	-7.5
Monaco	13	7	1	1	9	1	0.0	-30.8
Netherlands	2,020	2,015	141	32	2,188	1,003	0.5	8.3
Switzerland	1,539	1,547	84	20	1,651	771	0.4	7.3
Central / Eastern Europe	6,253	6,546	261	176	6,983	3,642	1.7	11.7
Bulgaria	80	145	6	5	156	82	0.0	95.0
Czech Republic	288	310	6	4	320	149	0.1	11.1
Estonia	82	65	3	7	75	33	0.0	-8.5
Hungary	265	255	16	2	273	121	0.1	3.0
Kazakhstan	90	82	17	2	101	57	0.0	12.2
Kyrgyzstan	6	13	1	2	16	8	0.0	166.7
Latvia	130	67	2	1	70	18	0.0	-46.2
Lithuania	206	133	7	6	146	66	0.0	-29.1
Poland	974	1,022	16	8	1,046	530	0.3	7.4
Romania	172	211	4	1	216	125	0.1	25.6
Russian Federation	3,452	3,817	150	91	4,058	2,210	1.0	17.6
Slovakia	136	135	2	2	139	70	0.0	2.2
Ukraine	327	271	26	44	341	164	0.1	4.3
Uzbekistan	45	20	5	1	26	9	0.0	-42.2

Source: Statistics and Tourism Information Department, MOT

International Tourist Arrivals to Cambodia by Country of Residence in October 2016

(by all means of transportation)

Regions Country of Residence	2015	2016			Total	Female	Share	Change
		Purposes of Visit					(%)	(%)
		Holiday	Business	Others			2016*	2016*/15
Grand Total	408,922	361,055	32,436	20,586	414,077	173,539	100.0	1.3
Southern Europe	5,886	6,782	232	78	7,092	3,286	1.7	20.5
Croatia	96	61	4	1	66	25	0.0	-31.3
Greece	66	83	9	1	93	39	0.0	40.9
Italy	1,735	1,879	95	29	2,003	819	0.5	15.4
Malta	56	54	2	2	58	24	0.0	3.6
Portugal	446	640	16	3	659	336	0.2	47.8
Serbia	36	32	1	4	37	20	0.0	2.8
Slovenia	92	102	4	2	108	45	0.0	17.4
Spain	3,136	3,648	48	26	3,722	1,873	0.9	18.7
Turkey	223	283	53	10	346	105	0.1	55.2
Other Europe	797	685	18	216	919	372	0.2	15.3
Americas	23,552	23,904	1,211	711	25,826	11,580	6.2	9.7
North America	20,766	20,610	1,157	641	22,408	9,914	5.4	7.9
Canada	3,993	3,911	295	41	4,247	2,014	1.0	6.4
Mexico	596	637	6	9	652	351	0.2	9.4
United States	16,177	16,062	856	591	17,509	7,549	4.2	8.2
Central America	99	82	4	4	90	37	0.0	-9.1
Costa Rica	39	51	1	2	54	28	0.0	38.5
Honduras	22	18	2	1	21	5	0.0	-4.5
Jamaica	38	13	1	1	15	4	0.0	-60.5
South America	2,129	2,598	37	39	2,674	1,376	0.6	25.6
Argentina	456	623	2	7	632	342	0.2	38.6
Brazil	758	846	21	15	882	449	0.2	16.4
Chile	379	491	1	1	493	266	0.1	30.1
Colombia	247	416	8	1	425	218	0.1	72.1
Ecuador	37	44	1	3	48	19	0.0	29.7
Peru	159	99	1	5	105	49	0.0	-34.0
Uruguay	69	46	1	3	50	17	0.0	-27.5
Venezuela	24	33	2	4	39	16	0.0	62.5
Other America	558	614	13	27	654	253	0.2	17.2
Africa	711	756	122	118	996	339	0.2	40.1
North Africa	55	69	9	10	88	32	0.0	60.0
Morocco	27	30	6	3	39	19	0.0	44.4
Sudan	7	9	1	2	12	3	0.0	71.4
Tunisia	21	30	2	5	37	10	0.0	76.2
Subsaharan Africa	552	570	108	90	768	268	0.2	39.1
Cameroon	12	15	1	2	18	4	0.0	50.0
Congo	11	1	1	1	3	1	0.0	-72.7
Ghana	14	13	1	7	21	2	0.0	50.0
Kenya	22	40	7	6	53	27	0.0	140.9
Liberia	2	2	1	1	4	1	0.0	100.0
Nigeria	90	64	56	7	127	10	0.0	41.1
South Africa	371	405	36	12	453	207	0.1	22.1
Tanzania	8	12	2	49	63	7	0.0	687.5
Uganda	13	9	1	2	12	2	0.0	-7.7
Zimbabwe	9	9	2	3	14	7	0.0	55.6
Other Africa	104	117	5	18	140	39	0.0	34.6
Middle East	1,089	2,016	51	46	2,113	836	0.5	94.0
Egypt	37	38	4	2	44	9	0.0	18.9
Iran	29	110	4	3	117	12	0.0	303.4
Iraq	20	8	2	1	11	2	0.0	-45.0
Israel	687	1,521	22	10	1,553	734	0.4	126.1
Jordan	30	34	9	1	44	8	0.0	46.7
Kuwait	52	39	1	1	41	4	0.0	-21.2
Oman	7	17	1	2	20	3	0.0	185.7
Palestine	6	15	1	3	19	5	0.0	216.7
Qatar	8	9	1	1	11	1	0.0	37.5
Saudi Arabia	13	25	1	7	33	6	0.0	153.8
Syria	23	40	1	2	43	13	0.0	87.0
United Arab Emirates	23	28	1	3	32	4	0.0	39.1
Yemen	60	27	1	1	29	3	0.0	-51.7
Other Middle East	94	105	2	9	116	32	0.0	23.4