



KINGDOM OF CAMBODIA  
NATION RELIGION KING



# TOURISM STATISTICS REPORT

# August 2016

**MINISTRY OF TOURISM**

Statistics and Tourism Information Department

No. A3, Street 169, Sangkat Veal Vong, Khan 7 Makara, Phnom Penh, Cambodia.

Fax: +855 23 885003

E-mail: [kong@mot.gov.kh](mailto:kong@mot.gov.kh)

Web site: [www.mot.gov.kh](http://www.mot.gov.kh)

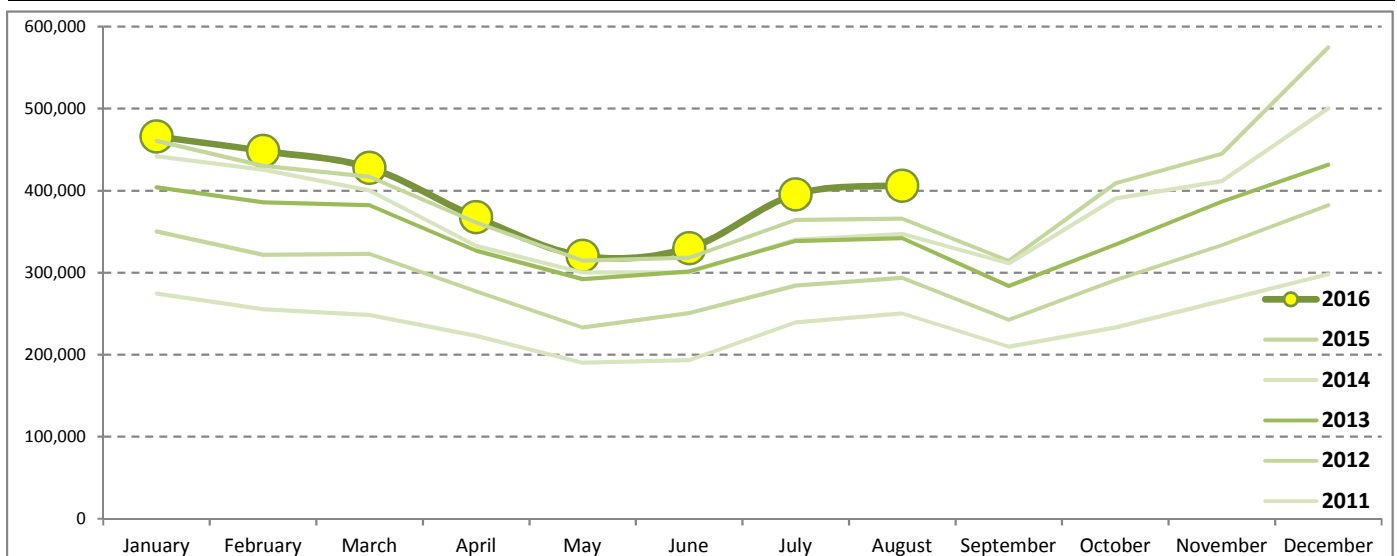
# Tourism Highlights

## International Tourist Arrivals, Average Length of Stays, Hotel Occupancy & Tourism Receipts 1993 - 2015

Years	Int'l Tourist Arrivals		Average Length	Hotel Occupancy	Tourism Receipts
	Number	Change (%)	of Stays (Days)	(%)	(Million US\$)
1993	118,183	-	N/A	N/A	N/A
1994	176,617	49.4	N/A	N/A	N/A
1995	219,680	24.4	8.00	37.0	100
1996	260,489	18.6	7.50	40.0	118
1997	218,843	-16.0	6.40	30.0	103
1998	286,524	30.9	5.20	40.0	166
1999	367,743	28.3	5.50	44.0	190
2000	466,365	26.8	5.50	45.0	228
2001	604,919	29.7	5.50	48.0	304
2002	786,524	30.0	5.80	50.0	379
2003	701,014	-10.9	5.50	50.0	347
2004	1,055,202	50.5	6.30	52.0	578
2005	1,421,615	34.7	6.30	52.0	832
2006	1,700,041	19.6	6.50	54.8	1,049
2007	2,015,128	18.5	6.50	54.8	1,400
2008	2,125,465	5.5	6.65	62.7	1,595
2009	2,161,577	1.7	6.45	63.6	1,561
2010	2,508,289	16.0	6.45	65.7	1,786
2011	2,881,862	14.9	6.50	66.2	1,912
2012	3,584,307	24.4	6.30	68.5	2,210
2013	4,210,165	17.5	6.75	69.5	2,547
2014	4,502,775	7.0	6.50	67.6	2,736
2015	4,775,231	6.1	6.80	70.2	3,012

### International Tourist Arrivals to Cambodia

Months	2011	2012	2013	2014	2015	2016	Change (%)				
							12/11	13/12	14/13	15/14	16*/15
<b>Q1</b>	<b>778,467</b>	<b>995,210</b>	<b>1,172,072</b>	<b>1,267,922</b>	<b>1,307,836</b>	<b>1,342,477</b>	<b>27.8</b>	<b>17.8</b>	<b>8.2</b>	<b>3.1</b>	<b>2.6</b>
January	274,471	350,257	404,106	442,045	460,577	466,086	27.6	15.4	9.4	4.2	1.2
February	255,499	321,870	385,760	425,801	430,207	448,468	26.0	19.8	10.4	1.0	4.2
March	248,497	323,083	382,206	400,076	417,052	427,923	30.0	18.3	4.7	4.2	2.6
<b>Q2</b>	<b>606,562</b>	<b>761,442</b>	<b>920,527</b>	<b>933,446</b>	<b>994,154</b>	<b>1,018,455</b>	<b>25.5</b>	<b>20.9</b>	<b>1.4</b>	<b>6.5</b>	<b>2.4</b>
April	223,032	277,304	327,000	332,690	361,139	367,684	24.3	17.9	1.7	8.6	1.8
May	190,258	233,220	292,115	300,302	314,748	320,601	22.6	25.3	2.8	4.8	1.9
June	193,272	250,918	301,412	300,454	318,267	330,170	29.8	20.1	-0.3	5.9	3.7
<b>Q3</b>	<b>699,760</b>	<b>820,888</b>	<b>964,612</b>	<b>998,690</b>	<b>1,044,880</b>	<b>801,975</b>	<b>17.3</b>	<b>17.5</b>	<b>3.5</b>	<b>4.6</b>	
July	239,527	284,282	338,761	340,091	364,325	395,761	18.7	19.2	0.4	7.1	8.6
August	250,429	293,859	342,064	347,211	366,096	406,214	17.3	16.4	1.5	5.4	11.0
September	209,804	242,747	283,787	311,388	314,459		15.7	16.9	9.7	1.0	
<b>Q4</b>	<b>797,073</b>	<b>1,006,767</b>	<b>1,152,954</b>	<b>1,302,717</b>	<b>1,428,361</b>	<b>0</b>	<b>26.3</b>	<b>14.5</b>	<b>13.0</b>	<b>9.6</b>	
October	233,190	290,959	334,410	390,637	408,922		24.8	14.9	16.8	4.7	
November	265,539	333,482	386,737	411,501	444,640		25.6	16.0	6.4	8.1	
December	298,344	382,326	431,807	500,579	574,799		28.1	12.9	15.9	14.8	
<b>Total</b>	<b>2,881,862</b>	<b>3,584,307</b>	<b>4,210,165</b>	<b>4,502,775</b>	<b>4,775,231</b>	<b>3,162,907</b>	<b>24.4</b>	<b>17.5</b>	<b>7.0</b>	<b>6.1</b>	<b>4.3</b>



Source: Statistics and Tourism Information Department, MOT

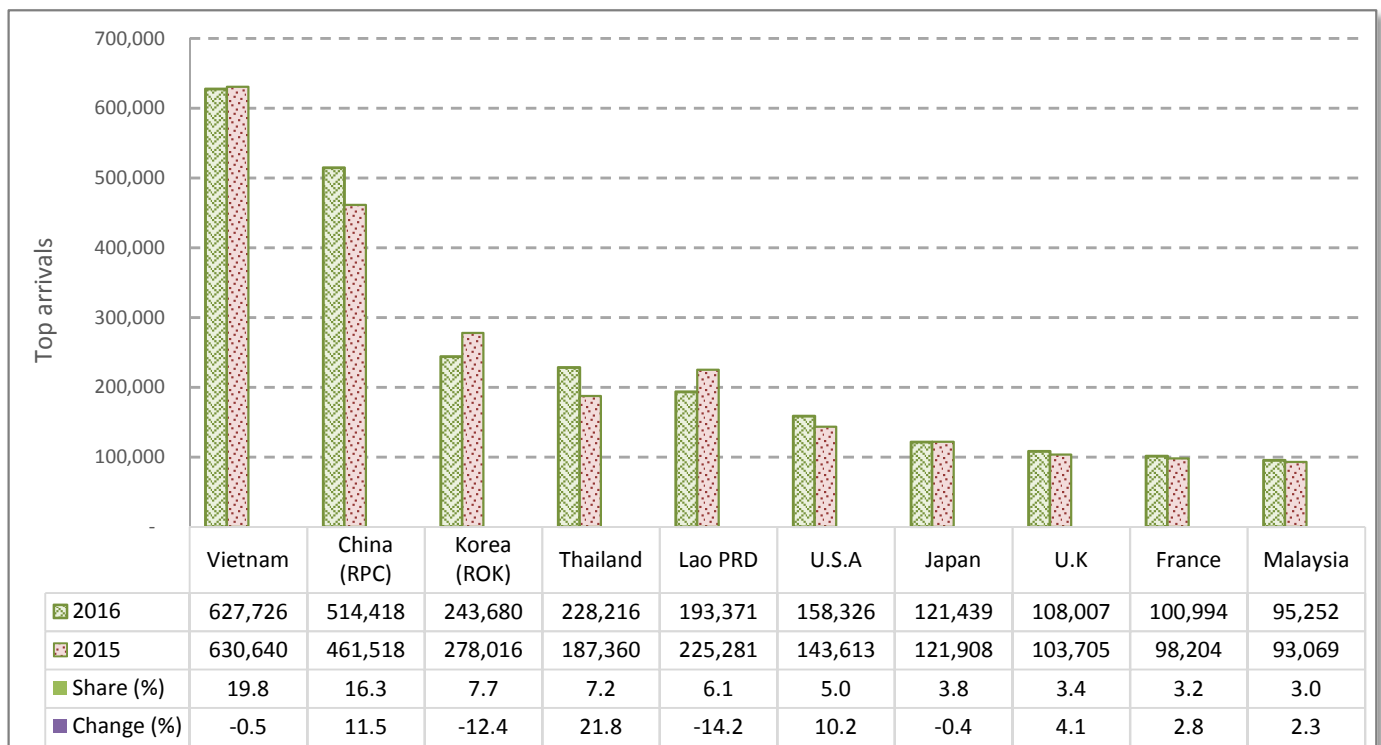
# CAMBODIA: TOURISM STATISTICS REPORT IN THE FIRST EIGHT MONTHS 2016

## I. INBOUND TOURISM

### 1. International tourist arrivals in January - August 2016

	Inbound tourism		Share (%)		Change (%)
	2015	2016	2015	2016	2016*/15
<b>Air</b>	<b>1,628,812</b>	<b>1,724,037</b>	<b>53.7</b>	<b>54.5</b>	<b>5.8</b>
Phnom Penh Int'l Airport (PNH)	698,437	747,505	23.0	23.6	7.0
Siem Reap Int'l Airport (REP)	930,375	965,208	30.7	30.5	3.7
Kong Keng (KOS)		11,324		0.4	
<b>Land and Waterways</b>	<b>1,403,599</b>	<b>1,438,870</b>	<b>46.3</b>	<b>45.5</b>	<b>2.5</b>
Land	1,309,197	1,330,927	43.2	42.1	1.7
Waterways	94,402	107,943	3.1	3.4	14.3
<b>Total</b>	<b>3,032,411</b>	<b>3,162,907</b>	<b>100.0</b>	<b>100.0</b>	<b>4.3</b>

### 2. Top ten markets arrivals in January - August 2016



## II. OUTBOUND TOURISM

### Outbound tourism in January - August 2016

	Outbound tourism		Change (%)
	2015	2016	2016*/15
Cambodian Outbound Tourists	758,041	937,588	23.7
International Tourists Departure	2,929,846	2,969,528	1.4

## III. INTERNAL TOURISM

### Foreign visitor arrivals to the regions in January - August 2016

	Arrivals		Share (%)		Change (%)
	2015	2016	2015	2016	2016*/15
Phnom Penh & Surrounding	1,605,991	1,725,859	45.7	47.0	7.5
Siem Reap Angkor	1,426,420	1,437,048	40.6	39.1	0.7
Coastal Areas	435,680	465,787	12.4	12.7	6.9
Eco-tourism Areas	43,105	44,032	1.2	1.2	2.2
<b>Total</b>	<b>3,511,196</b>	<b>3,672,726</b>	<b>100.0</b>	<b>100.0</b>	<b>4.6</b>

## International Tourist Arrivals to Cambodia by Country of Residence in January - August 2016

(by all means of transportation)

Regions Country of Residence	2015	2016			Total	Female	Share	Change
		Purposes of Visit					(%)	(%)
		Holiday	Business	Others	2016*	2016*/15		
<b>Grand Total</b>	<b>3,032,411</b>	<b>2,767,464</b>	<b>228,998</b>	<b>166,445</b>	<b>3,162,907</b>	<b>1,355,782</b>	<b>100.0</b>	<b>4.3</b>
<b>Asia and the Pacific</b>	<b>2,336,536</b>	<b>2,057,142</b>	<b>198,970</b>	<b>150,608</b>	<b>2,406,720</b>	<b>1,012,362</b>	<b>76.1</b>	<b>3.0</b>
<b>ASEAN (Southeast Asia)</b>	<b>1,264,475</b>	<b>1,088,379</b>	<b>77,298</b>	<b>133,034</b>	<b>1,298,711</b>	<b>538,634</b>	<b>41.1</b>	<b>2.7</b>
Brunei Darussalam	539	475	8	42	525	206	0.0	-2.6
Indonesia	26,985	18,645	9,361	3,583	31,589	8,321	1.0	17.1
Lao PDR	225,281	183,630	142	9,599	193,371	105,510	6.1	-14.2
Malaysia	93,069	86,096	7,112	2,044	95,252	31,243	3.0	2.3
Myanmar	5,902	7,166	400	852	8,418	3,486	0.3	42.6
Philippines	55,050	53,980	7,996	8,704	70,680	35,961	2.2	28.4
Singapore	39,649	39,436	2,275	1,223	42,934	13,568	1.4	8.3
Thailand	187,360	192,220	13,968	22,028	228,216	84,598	7.2	21.8
Vietnam	630,640	506,731	36,036	84,959	627,726	255,741	19.8	-0.5
<b>Northeast Asia</b>	<b>944,013</b>	<b>837,241</b>	<b>112,933</b>	<b>11,320</b>	<b>961,494</b>	<b>413,105</b>	<b>30.4</b>	<b>1.9</b>
China	461,518	434,994	72,780	6,644	514,418	228,531	16.3	11.5
Hong Kong (China)	7,543	10,788	183	54	11,025	5,159	0.3	46.2
Japan	121,908	103,922	15,696	1,821	121,439	46,543	3.8	-0.4
Korea (ROK)	278,016	228,910	12,172	2,598	243,680	104,534	7.7	-12.4
Macau (China)	276	218	14	32	264	80	0.0	-4.3
Mongolia	309	251	29	29	309	181	0.0	0.0
Taiwan (China)	74,443	58,158	12,059	142	70,359	28,077	2.2	-5.5
<b>Southern Asia</b>	<b>26,999</b>	<b>26,298</b>	<b>3,505</b>	<b>3,535</b>	<b>33,338</b>	<b>8,610</b>	<b>1.1</b>	<b>23.5</b>
Afghanistan	76	66	4	17	87	23	0.0	14.5
Bangladesh	1,338	846	250	129	1,225	185	0.0	-8.4
Bhutan	138	90	5	55	150	55	0.0	8.7
India	21,738	22,418	2,323	3,062	27,803	7,431	0.9	27.9
Nepal	1,496	1,239	220	93	1,552	399	0.0	3.7
Pakistan	963	624	296	75	995	181	0.0	3.3
Sri Lanka	1,250	1,015	407	104	1,526	336	0.0	22.1
<b>Oceania</b>	<b>97,999</b>	<b>102,455</b>	<b>5,085</b>	<b>1,173</b>	<b>108,713</b>	<b>50,288</b>	<b>3.4</b>	<b>10.9</b>
Australia	83,244	87,850	4,271	1,057	93,178	43,143	2.9	11.9
Fiji	116	81	19	23	123	42	0.0	6.0
New Zealand	14,639	14,524	795	93	15,412	7,103	0.5	5.3
Other Asia & the Pacific	3,050	2,769	149	1,546	4,464	1,725	0.1	46.4
<b>Europe</b>	<b>471,857</b>	<b>477,796</b>	<b>19,917</b>	<b>8,730</b>	<b>506,443</b>	<b>230,125</b>	<b>16.0</b>	<b>7.3</b>
<b>Northern Europe</b>	<b>142,205</b>	<b>139,338</b>	<b>6,430</b>	<b>1,688</b>	<b>147,456</b>	<b>64,411</b>	<b>4.7</b>	<b>3.7</b>
Denmark	8,321	7,914	260	92	8,266	3,579	0.3	-0.7
Finland	4,521	3,801	182	68	4,051	1,629	0.1	-10.4
Iceland	483	489	10	18	517	211	0.0	7.0
Ireland	7,925	7,858	285	70	8,213	3,899	0.3	3.6
Norway	6,476	6,503	178	52	6,733	3,105	0.2	4.0
Sweden	10,774	11,087	452	130	11,669	4,899	0.4	8.3
United Kingdom	103,705	101,686	5,063	1,258	108,007	47,089	3.4	4.1
<b>Western Europe</b>	<b>207,027</b>	<b>217,632</b>	<b>9,765</b>	<b>3,762</b>	<b>231,159</b>	<b>103,914</b>	<b>7.3</b>	<b>11.7</b>
Austria	6,776	7,490	149	54	7,693	3,431	0.2	13.5
Belgium	11,274	10,888	505	254	11,647	4,955	0.4	3.3
France	98,204	93,371	5,791	1,832	100,994	45,793	3.2	2.8
Germany	56,623	67,971	1,638	1,120	70,729	31,857	2.2	24.9
Luxembourg	457	527	10	12	549	235	0.0	20.1
Monaco	54	33	2	11	46	11	0.0	-14.8
Netherlands	19,469	19,803	917	248	20,968	9,493	0.7	7.7
Switzerland	14,170	17,549	753	231	18,533	8,139	0.6	30.8
<b>Central / Eastern Europe</b>	<b>65,040</b>	<b>58,551</b>	<b>1,811</b>	<b>1,120</b>	<b>61,482</b>	<b>31,622</b>	<b>1.9</b>	<b>-5.5</b>
Bulgaria	1,107	1,026	22	42	1,090	550	0.0	-1.5
Czech Republic	3,776	3,555	59	45	3,659	1,627	0.1	-3.1
Estonia	1,205	1,135	21	11	1,167	517	0.0	-3.2
Hungary	2,782	3,036	92	36	3,164	1,535	0.1	13.7
Kazakhstan	1,710	975	167	15	1,157	591	0.0	-32.3
Kyrgyzstan	120	86	15	16	117	49	0.0	-2.5
Latvia	535	520	27	17	564	272	0.0	5.4
Lithuania	1,118	1,232	41	14	1,287	650	0.0	15.1
Poland	8,490	9,081	160	72	9,313	4,594	0.3	9.7
Romania	1,545	1,420	47	53	1,520	847	0.0	-1.6
Russian Federation	36,863	31,415	938	294	32,647	17,579	1.0	-11.4
Slovakia	1,583	1,717	48	21	1,786	823	0.1	12.8
Ukraine	3,665	3,108	133	458	3,699	1,845	0.1	0.9
Uzbekistan	541	245	41	26	312	143	0.0	-42.3

Source: Statistics and Tourism Information Department, MOT

## International Tourist Arrivals to Cambodia by Country of Residence in January - August 2016

(by all means of transportation)

Regions Country of Residence	2015	2016			Total	Female	Share	Change
		Purposes of Visit					(%)	(%)
		Holiday	Business	Others			2016*	2016*/15
<b>Grand Total</b>	<b>3,032,411</b>	<b>2,767,464</b>	<b>228,998</b>	<b>166,445</b>	<b>3,162,907</b>	<b>1,355,782</b>	<b>100.0</b>	<b>4.3</b>
<b>Southern Europe</b>	<b>55,176</b>	<b>59,837</b>	<b>1,807</b>	<b>1,182</b>	<b>62,826</b>	<b>28,769</b>	<b>2.0</b>	<b>13.9</b>
Croatia	796	683	28	65	776	351	0.0	-2.5
Greece	1,110	977	52	96	1,125	448	0.0	1.4
Italy	21,268	23,485	793	346	24,624	10,665	0.8	15.8
Malta	301	313	4	14	331	145	0.0	10.0
Portugal	3,627	4,160	125	94	4,379	2,110	0.1	20.7
Serbia	562	468	24	236	728	338	0.0	29.5
Slovenia	754	716	44	13	773	363	0.0	2.5
Spain	22,921	25,559	404	134	26,097	12,803	0.8	13.9
Turkey	3,837	3,476	333	184	3,993	1,546	0.1	4.1
Other Europe	2,409	2,438	104	978	3,520	1,409	0.1	46.1
<b>Americas</b>	<b>209,222</b>	<b>217,712</b>	<b>8,534</b>	<b>6,075</b>	<b>232,321</b>	<b>106,793</b>	<b>7.3</b>	<b>11.0</b>
<b>North America</b>	<b>186,600</b>	<b>190,420</b>	<b>8,193</b>	<b>4,724</b>	<b>203,337</b>	<b>92,905</b>	<b>6.4</b>	<b>9.0</b>
Canada	38,489	38,096	1,595	423	40,114	18,845	1.3	4.2
Mexico	4,498	4,779	44	74	4,897	2,482	0.2	8.9
United States	143,613	147,545	6,554	4,227	158,326	71,578	5.0	10.2
<b>Central America</b>	<b>450</b>	<b>492</b>	<b>20</b>	<b>54</b>	<b>566</b>	<b>219</b>	<b>0.0</b>	<b>25.8</b>
Costa Rica	301	350	5	12	367	167	0.0	21.9
Honduras	74	98	10	30	138	22	0.0	86.5
Jamaica	75	44	5	12	61	30	0.0	-18.7
<b>South America</b>	<b>20,425</b>	<b>25,155</b>	<b>254</b>	<b>665</b>	<b>26,074</b>	<b>12,704</b>	<b>0.8</b>	<b>27.7</b>
Argentina	5,548	10,358	41	38	10,437	5,116	0.3	88.1
Brazil	6,995	6,258	113	86	6,457	3,079	0.2	-7.7
Chile	3,574	4,425	28	46	4,499	2,347	0.1	25.9
Colombia	1,950	1,862	40	31	1,933	961	0.1	-0.9
Ecuador	390	376	8	15	399	201	0.0	2.3
Peru	603	685	7	422	1,114	372	0.0	84.7
Uruguay	805	958	8	13	979	505	0.0	21.6
Venezuela	560	233	9	14	256	123	0.0	-54.3
Other America	1,747	1,645	67	632	2,344	965	0.1	34.2
<b>Africa</b>	<b>5,656</b>	<b>4,925</b>	<b>1,021</b>	<b>754</b>	<b>6,700</b>	<b>2,690</b>	<b>0.2</b>	<b>18.5</b>
<b>North Africa</b>	<b>562</b>	<b>623</b>	<b>42</b>	<b>45</b>	<b>710</b>	<b>307</b>	<b>0.0</b>	<b>26.3</b>
Morocco	342	309	35	14	358	160	0.0	4.7
Sudan	99	62	0	18	80	19	0.0	-19.2
Tunisia	121	252	7	13	272	128	0.0	124.8
<b>Subsaharan Africa</b>	<b>4,698</b>	<b>3,906</b>	<b>950</b>	<b>569</b>	<b>5,425</b>	<b>2,189</b>	<b>0.2</b>	<b>15.5</b>
Cameroon	158	56	10	9	75	23	0.0	-52.5
Congo	63	53	4	23	80	27	0.0	27.0
Ghana	59	63	12	57	132	31	0.0	123.7
Kenya	207	191	16	33	240	120	0.0	15.9
Liberia	43	22	0	10	32	6	0.0	-25.6
Nigeria	713	372	570	24	966	82	0.0	35.5
South Africa	3,256	2,910	306	203	3,419	1,731	0.1	5.0
Tanzania	54	87	4	172	263	51	0.0	387.0
Uganda	70	70	4	8	82	39	0.0	17.1
Zimbabwe	75	82	24	30	136	79	0.0	81.3
Other Africa	396	396	29	140	565	194	0.0	42.7
<b>Middle East</b>	<b>9,140</b>	<b>9,889</b>	<b>556</b>	<b>278</b>	<b>10,723</b>	<b>3,812</b>	<b>0.3</b>	<b>17.3</b>
Egypt	372	407	41	16	464	130	0.0	24.7
Iran	333	277	26	20	323	112	0.0	-3.0
Iraq	85	87	8	11	106	15	0.0	24.7
Israel	5,951	6,563	174	36	6,773	2,950	0.2	13.8
Jordan	239	660	185	13	858	179	0.0	259.0
Kuwait	739	532	5	22	559	43	0.0	-24.4
Oman	160	123	0	10	133	28	0.0	-16.9
Palestine	48	38	3	9	50	16	0.0	4.2
Qatar	87	41	3	11	55	16	0.0	-36.8
Saudi Arabia	241	204	13	16	233	20	0.0	-3.3
Syria	141	390	62	11	463	109	0.0	228.4
United Arab Emirates	301	94	2	11	107	27	0.0	-64.5
Yemen	146	174	9	13	196	36	0.0	34.2
Other Middle East	297	299	25	79	403	131	0.0	35.7

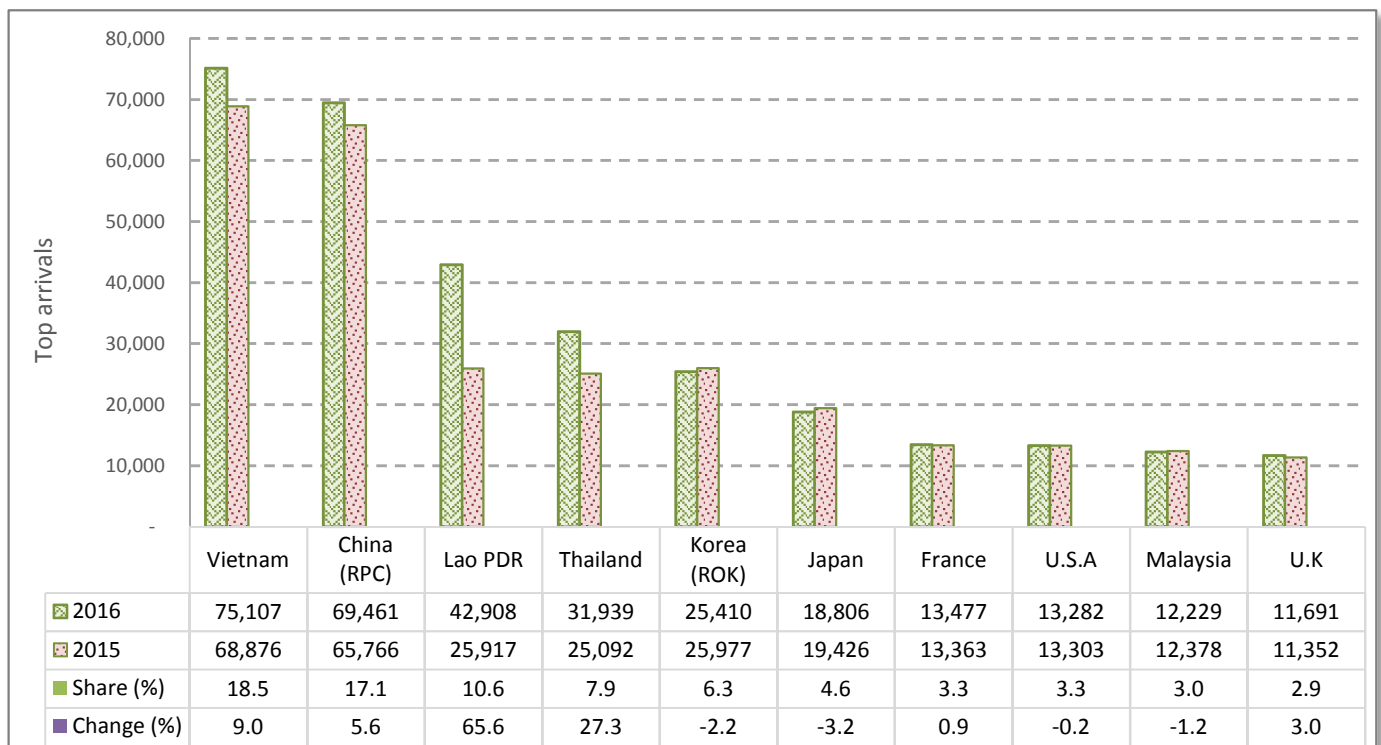
# CAMBODIA: TOURISM STATISTICS REPORT IN AUGUST 2016

## I. INBOUND TOURISM

### 1. International tourist arrivals in August 2016

	Inbound tourism		Share (%)		Change (%)
	2015	2016	2015	2016	2016*/15
<b>Air</b>	<b>204,276</b>	<b>206,476</b>	<b>55.8</b>	<b>50.8</b>	<b>1.1</b>
Phnom Penh Int'l Airport (PNH)	92,880	90,387	25.4	22.3	-2.7
Siem Reap Int'l Airport (REP)	111,396	112,271	30.4	27.6	0.8
Kong Keng (KOS)		3,818		0.9	
<b>Land and Waterways</b>	<b>161,820</b>	<b>199,738</b>	<b>44.2</b>	<b>49.2</b>	<b>23.4</b>
Land	149,180	187,472	40.7	46.2	25.7
Waterways	12,640	12,266	3.5	3.0	-3.0
<b>Total</b>	<b>366,096</b>	<b>406,214</b>	<b>100.0</b>	<b>100.0</b>	<b>11.0</b>

### 2. Top ten markets arrivals in August 2016



## II. OUTBOUND TOURISM

### Outbound tourism in August 2016

	Outbound tourism		Change (%)
	2015	2016	2016*/15
Cambodian Outbound Tourists	108,335	122,531	13.1
International Tourists Departure	369,558	384,249	4.0

## III. INTERNAL TOURISM

### Foreign visitor arrivals to the regions in August 2016

	Arrivals		Share (%)		Change (%)
	2015	2016	2015	2016	2016*/15
Phnom Penh & Surrounding	199,998	233,578	48.7	50.9	16.8
Siem Reap Angkor	166,098	172,636	40.4	37.6	3.9
Coastal Areas	40,690	48,169	9.9	10.5	18.4
Eco-tourism Areas	4,212	4,734	1.0	1.0	12.4
<b>Total</b>	<b>410,998</b>	<b>459,117</b>	<b>100.0</b>	<b>100.0</b>	<b>11.7</b>

## International Tourist Arrivals to Cambodia by Country of Residence in August 2016

(by all means of transportation)

Regions Country of Residence	2015	2016			Total	Female	Share	Change
		Purposes of Visit					(%)	(%)
		Holiday	Business	Others			2016*	2016*/15
<b>Grand Total</b>	<b>366,096</b>	<b>359,995</b>	<b>27,415</b>	<b>18,804</b>	<b>406,214</b>	<b>173,197</b>	<b>100.0</b>	<b>11.0</b>
<b>Asia and the Pacific</b>	<b>287,793</b>	<b>281,728</b>	<b>23,894</b>	<b>16,561</b>	<b>322,183</b>	<b>134,109</b>	<b>79.3</b>	<b>11.9</b>
<b>ASEAN (Southeast Asia)</b>	<b>149,021</b>	<b>158,013</b>	<b>9,274</b>	<b>14,421</b>	<b>181,708</b>	<b>74,053</b>	<b>44.7</b>	<b>21.9</b>
Brunei Darussalam	53	45	1	5	51	25	0.0	-3.8
Indonesia	3,289	2,388	1,235	481	4,104	1,018	1.0	24.8
Lao PDR	25,917	42,318	13	577	42,908	24,269	10.6	65.6
Malaysia	12,378	11,424	784	21	12,229	3,975	3.0	-1.2
Myanmar	661	1,005	50	95	1,150	452	0.3	74.0
Philippines	7,766	6,877	876	1,406	9,159	4,662	2.3	17.9
Singapore	4,989	4,645	291	125	5,061	1,477	1.2	1.4
Thailand	25,092	27,814	1,825	2,300	31,939	9,008	7.9	27.3
Vietnam	68,876	61,497	4,199	9,411	75,107	29,167	18.5	9.0
<b>Northeast Asia</b>	<b>121,741</b>	<b>108,432</b>	<b>13,521</b>	<b>1,106</b>	<b>123,059</b>	<b>52,852</b>	<b>30.3</b>	<b>1.1</b>
China	65,766	60,114	8,684	663	69,461	30,963	17.1	5.6
Hong Kong (China)	790	718	21	10	749	288	0.2	-5.2
Japan	19,426	16,714	1,918	174	18,806	7,428	4.6	-3.2
Korea (ROK)	25,977	23,750	1,429	231	25,410	10,816	6.3	-2.2
Macau (China)	18	23	3	5	31	7	0.0	72.2
Mongolia	42	22	3	7	32	19	0.0	-23.8
Taiwan (China)	9,722	7,091	1,463	16	8,570	3,331	2.1	-11.8
<b>Southern Asia</b>	<b>3,963</b>	<b>3,185</b>	<b>479</b>	<b>517</b>	<b>4,181</b>	<b>1,045</b>	<b>1.0</b>	<b>5.5</b>
Afghanistan	5	2	0	1	3	0	0.0	-40.0
Bangladesh	193	109	29	9	147	25	0.0	-23.8
Bhutan	44	10	0	1	11	6	0.0	-75.0
India	3,107	2,696	335	443	3,474	887	0.9	11.8
Nepal	161	156	29	5	190	53	0.0	18.0
Pakistan	171	79	39	14	132	29	0.0	-22.8
Sri Lanka	282	133	47	44	224	45	0.1	-20.6
<b>Oceania</b>	<b>12,552</b>	<b>11,612</b>	<b>608</b>	<b>156</b>	<b>12,376</b>	<b>5,835</b>	<b>3.0</b>	<b>-1.4</b>
Australia	10,663	9,713	519	136	10,368	4,910	2.6	-2.8
Fiji	16	12	1	4	17	6	0.0	6.3
New Zealand	1,873	1,887	88	16	1,991	919	0.5	6.3
Other Asia & the Pacific	516	486	12	361	859	324	0.2	66.5
<b>Europe</b>	<b>58,679</b>	<b>58,537</b>	<b>2,362</b>	<b>1,389</b>	<b>62,288</b>	<b>29,434</b>	<b>15.3</b>	<b>6.2</b>
<b>Northern Europe</b>	<b>13,794</b>	<b>13,087</b>	<b>714</b>	<b>267</b>	<b>14,068</b>	<b>6,328</b>	<b>3.5</b>	<b>2.0</b>
Denmark	459	361	28	11	400	169	0.1	-12.9
Finland	203	131	29	8	168	76	0.0	-17.2
Iceland	50	14	1	2	17	5	0.0	-66.0
Ireland	1,016	1,040	34	10	1,084	528	0.3	6.7
Norway	247	276	22	7	305	125	0.1	23.5
Sweden	467	351	42	10	403	132	0.1	-13.7
United Kingdom	11,352	10,914	558	219	11,691	5,293	2.9	3.0
<b>Western Europe</b>	<b>24,701</b>	<b>24,157</b>	<b>1,174</b>	<b>507</b>	<b>25,838</b>	<b>12,034</b>	<b>6.4</b>	<b>4.6</b>
Austria	699	764	18	5	787	366	0.2	12.6
Belgium	1,295	1,298	62	29	1,389	636	0.3	7.3
France	13,363	12,411	725	341	13,477	6,362	3.3	0.9
Germany	5,573	5,504	212	89	5,805	2,629	1.4	4.2
Luxembourg	69	50	1	1	52	20	0.0	-24.6
Monaco	6	7	0	2	9	2	0.0	50.0
Netherlands	2,613	3,059	98	26	3,183	1,521	0.8	21.8
Switzerland	1,083	1,064	58	14	1,136	498	0.3	4.9
<b>Central / Eastern Europe</b>	<b>4,030</b>	<b>3,610</b>	<b>219</b>	<b>143</b>	<b>3,972</b>	<b>2,040</b>	<b>1.0</b>	<b>-1.4</b>
Bulgaria	106	39	4	14	57	22	0.0	-46.2
Czech Republic	250	230	5	6	241	118	0.1	-3.6
Estonia	59	29	2	1	32	13	0.0	-45.8
Hungary	113	147	7	3	157	71	0.0	38.9
Kazakhstan	104	80	23	1	104	63	0.0	0.0
Kyrgyzstan	20	18	1	2	21	8	0.0	5.0
Latvia	29	28	3	2	33	14	0.0	13.8
Lithuania	48	39	10	2	51	22	0.0	6.3
Poland	610	572	18	21	611	303	0.2	0.2
Romania	125	103	4	19	126	62	0.0	0.8
Russian Federation	2,198	2,042	119	66	2,227	1,191	0.5	1.3
Slovakia	81	77	5	1	83	40	0.0	2.5
Ukraine	232	198	17	3	218	106	0.1	-6.0
Uzbekistan	55	8	1	2	11	7	0.0	-80.0

Source: Statistics and Tourism Information Department, MOT

## International Tourist Arrivals to Cambodia by Country of Residence in August 2016

(by all means of transportation)

Regions Country of Residence	2015	2016			Total	Female	Share	Change
		Purposes of Visit					(%)	(%)
		Holiday	Business	Others			2016*	2016*/15
<b>Grand Total</b>	<b>366,096</b>	<b>359,995</b>	<b>27,415</b>	<b>18,804</b>	<b>406,214</b>	<b>173,197</b>	<b>100.0</b>	<b>11.0</b>
<b>Southern Europe</b>	<b>15,745</b>	<b>17,309</b>	<b>244</b>	<b>147</b>	<b>17,700</b>	<b>8,743</b>	<b>4.4</b>	<b>12.4</b>
Croatia	58	42	2	1	45	24	0.0	-22.4
Greece	180	202	9	3	214	100	0.1	18.9
Italy	5,875	6,379	93	77	6,549	3,083	1.6	11.5
Malta	37	33	1	2	36	19	0.0	-2.7
Portugal	810	828	10	21	859	445	0.2	6.0
Serbia	47	29	4	1	34	26	0.0	-27.7
Slovenia	59	54	3	2	59	28	0.0	0.0
Spain	8,389	9,502	59	27	9,588	4,894	2.4	14.3
Turkey	290	240	63	13	316	124	0.1	9.0
Other Europe	409	374	11	325	710	289	0.2	73.6
<b>Americas</b>	<b>17,925</b>	<b>18,095</b>	<b>979</b>	<b>731</b>	<b>19,805</b>	<b>8,948</b>	<b>4.9</b>	<b>10.5</b>
<b>North America</b>	<b>16,298</b>	<b>14,901</b>	<b>949</b>	<b>519</b>	<b>16,369</b>	<b>7,136</b>	<b>4.0</b>	<b>0.4</b>
Canada	2,615	2,404	201	55	2,660	1,229	0.7	1.7
Mexico	380	412	3	12	427	219	0.1	12.4
United States	13,303	12,085	745	452	13,282	5,688	3.3	-0.2
<b>Central America</b>	<b>46</b>	<b>44</b>	<b>0</b>	<b>4</b>	<b>48</b>	<b>22</b>	<b>0.0</b>	<b>4.3</b>
Costa Rica	28	25	0	1	26	13	0.0	-7.1
Honduras	6	11	0	2	13	6	0.0	116.7
Jamaica	12	8	0	1	9	3	0.0	-25.0
<b>South America</b>	<b>1,327</b>	<b>2,936</b>	<b>23</b>	<b>26</b>	<b>2,985</b>	<b>1,625</b>	<b>0.7</b>	<b>124.9</b>
Argentina	337	1,976	1	1	1,978	1,116	0.5	486.9
Brazil	329	314	18	2	334	163	0.1	1.5
Chile	277	276	1	6	283	151	0.1	2.2
Colombia	178	191	2	5	198	105	0.0	11.2
Ecuador	37	60	0	4	64	29	0.0	73.0
Peru	86	67	1	3	71	37	0.0	-17.4
Uruguay	38	34	0	2	36	12	0.0	-5.3
Venezuela	45	18	0	3	21	12	0.0	-53.3
Other America	254	214	7	182	403	165	0.1	58.7
<b>Africa</b>	<b>713</b>	<b>725</b>	<b>139</b>	<b>91</b>	<b>955</b>	<b>399</b>	<b>0.2</b>	<b>33.9</b>
<b>North Africa</b>	<b>102</b>	<b>195</b>	<b>5</b>	<b>7</b>	<b>207</b>	<b>104</b>	<b>0.1</b>	<b>102.9</b>
Morocco	67	68	4	4	76	36	0.0	13.4
Sudan	16	12	0	2	14	5	0.0	-12.5
Tunisia	19	115	1	1	117	63	0.0	515.8
<b>Subsaharan Africa</b>	<b>548</b>	<b>466</b>	<b>132</b>	<b>65</b>	<b>663</b>	<b>261</b>	<b>0.2</b>	<b>21.0</b>
Cameroon	11	8	1	1	10	5	0.0	-9.1
Congo	9	6	1	1	8	3	0.0	-11.1
Ghana	8	3	3	1	7	1	0.0	-12.5
Kenya	23	18	1	5	24	15	0.0	4.3
Liberia	10	2	0	1	3	1	0.0	-70.0
Nigeria	98	67	88	1	156	12	0.0	59.2
South Africa	364	340	35	45	420	206	0.1	15.4
Tanzania	10	7	0	1	8	4	0.0	-20.0
Uganda	6	3	0	1	4	1	0.0	-33.3
Zimbabwe	9	12	3	8	23	13	0.0	155.6
Other Africa	63	64	2	19	85	34	0.0	34.9
<b>Middle East</b>	<b>986</b>	<b>910</b>	<b>41</b>	<b>32</b>	<b>983</b>	<b>307</b>	<b>0.2</b>	<b>-0.3</b>
Egypt	37	50	4	2	56	18	0.0	51.4
Iran	23	32	3	1	36	11	0.0	56.5
Iraq	10	15	0	1	16	4	0.0	60.0
Israel	493	490	24	1	515	209	0.1	4.5
Jordan	32	24	6	1	31	4	0.0	-3.1
Kuwait	189	123	0	4	127	9	0.0	-32.8
Oman	25	23	0	1	24	8	0.0	-4.0
Palestine	9	4	0	2	6	0	0.0	-33.3
Qatar	5	4	0	1	5	0	0.0	0.0
Saudi Arabia	37	26	1	3	30	5	0.0	-18.9
Syria	16	28	0	2	30	7	0.0	87.5
United Arab Emirates	45	12	0	1	13	4	0.0	-71.1
Yemen	26	23	1	3	27	5	0.0	3.8
Other Middle East	39	56	2	9	67	23	0.0	71.8