



KINGDOM OF CAMBODIA
NATION RELIGION KING



TOURISM STATISTICS REPORT

July 2016

MINISTRY OF TOURISM

Statistics and Tourism Information Department

No. A3, Street 169, Sangkat Veal Vong, Khan 7 Makara, Phnom Penh, Cambodia.

Fax: +855 23 885003

E-mail: kong@mot.gov.kh

Web site: www.mot.gov.kh

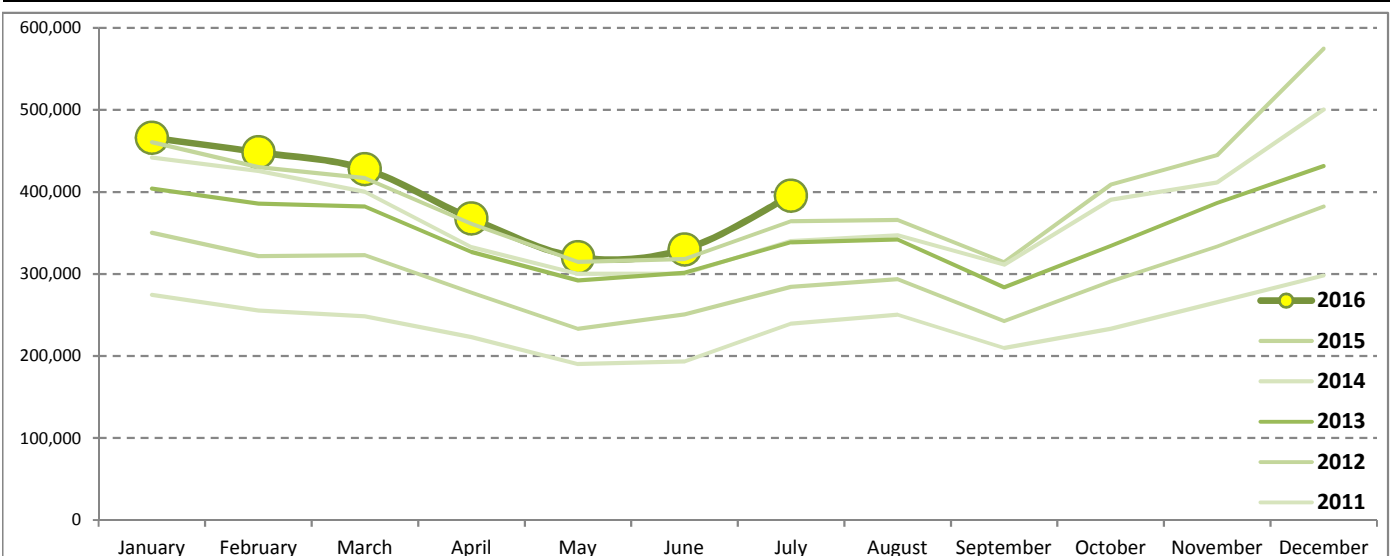
Tourism Highlights

International Tourist Arrivals, Average Length of Stays, Hotel Occupancy & Tourism Receipts 1993 - 2015

Years	Int'l Tourist Arrivals		Average Length	Hotel Occupancy	Tourism Receipts
	Number	Change (%)	of Stays (Days)	(%)	(Million US\$)
1993	118,183	-	N/A	N/A	N/A
1994	176,617	49.4	N/A	N/A	N/A
1995	219,680	24.4	8.00	37.0	100
1996	260,489	18.6	7.50	40.0	118
1997	218,843	-16.0	6.40	30.0	103
1998	286,524	30.9	5.20	40.0	166
1999	367,743	28.3	5.50	44.0	190
2000	466,365	26.8	5.50	45.0	228
2001	604,919	29.7	5.50	48.0	304
2002	786,524	30.0	5.80	50.0	379
2003	701,014	-10.9	5.50	50.0	347
2004	1,055,202	50.5	6.30	52.0	578
2005	1,421,615	34.7	6.30	52.0	832
2006	1,700,041	19.6	6.50	54.8	1,049
2007	2,015,128	18.5	6.50	54.8	1,400
2008	2,125,465	5.5	6.65	62.7	1,595
2009	2,161,577	1.7	6.45	63.6	1,561
2010	2,508,289	16.0	6.45	65.7	1,786
2011	2,881,862	14.9	6.50	66.2	1,912
2012	3,584,307	24.4	6.30	68.5	2,210
2013	4,210,165	17.5	6.75	69.5	2,547
2014	4,502,775	7.0	6.50	67.6	2,736
2015	4,775,231	6.1	6.80	70.2	3,012

International Tourist Arrivals to Cambodia

Months	2011	2012	2013	2014	2015	2016	Change (%)				
							12/11	13/12	14/13	15/14	16*/15
Q1	778,467	995,210	1,172,072	1,267,922	1,307,836	1,342,477	27.8	17.8	8.2	3.1	2.6
January	274,471	350,257	404,106	442,045	460,577	466,086	27.6	15.4	9.4	4.2	1.2
February	255,499	321,870	385,760	425,801	430,207	448,468	26.0	19.8	10.4	1.0	4.2
March	248,497	323,083	382,206	400,076	417,052	427,923	30.0	18.3	4.7	4.2	2.6
Q2	606,562	761,442	920,527	933,446	994,154	1,018,455	25.5	20.9	1.4	6.5	2.4
April	223,032	277,304	327,000	332,690	361,139	367,684	24.3	17.9	1.7	8.6	1.8
May	190,258	233,220	292,115	300,302	314,748	320,601	22.6	25.3	2.8	4.8	1.9
June	193,272	250,918	301,412	300,454	318,267	330,170	29.8	20.1	-0.3	5.9	3.7
Q3	699,760	820,888	964,612	998,690	1,044,880	395,761	17.3	17.5	3.5	4.6	
July	239,527	284,282	338,761	340,091	364,325	395,761	18.7	19.2	0.4	7.1	8.6
August	250,429	293,859	342,064	347,211	366,096		17.3	16.4	1.5	5.4	
September	209,804	242,747	283,787	311,388	314,459		15.7	16.9	9.7	1.0	
Q4	797,073	1,006,767	1,152,954	1,302,717	1,428,361	0	26.3	14.5	13.0	9.6	
October	233,190	290,959	334,410	390,637	408,922		24.8	14.9	16.8	4.7	
November	265,539	333,482	386,737	411,501	444,640		25.6	16.0	6.4	8.1	
December	298,344	382,326	431,807	500,579	574,799		28.1	12.9	15.9	14.8	
Total	2,881,862	3,584,307	4,210,165	4,502,775	4,775,231	2,756,693	24.4	17.5	7.0	6.1	3.4



Source: Statistics and Tourism Information Department, MOT

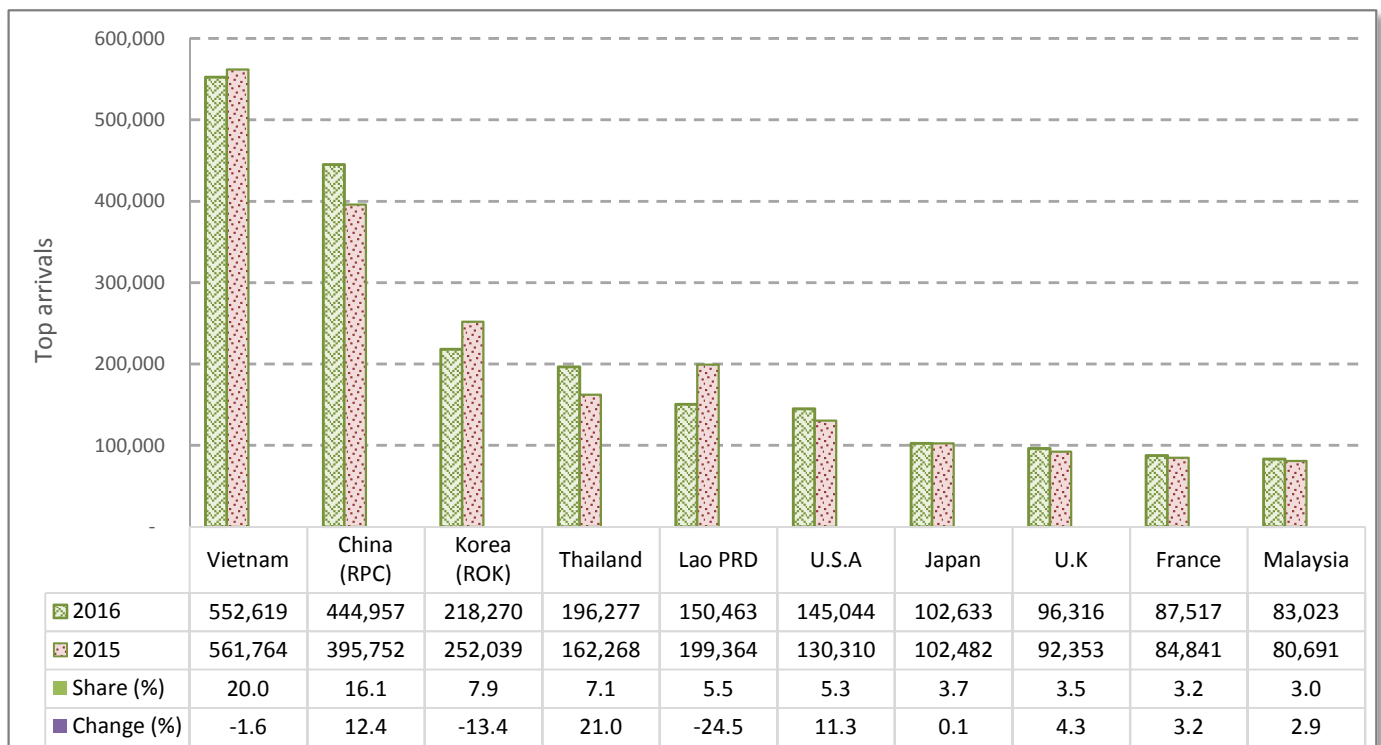
CAMBODIA: TOURISM STATISTICS REPORT IN THE FIRST SEVEN MONTHS 2016

I. INBOUND TOURISM

1. International tourist arrivals in January - July 2016

	Inbound tourism		Share (%)		Change (%)
	2015	2016	2015	2016	2016*/15
Air	1,424,536	1,517,561	53.4	55.1	6.5
Phnom Penh Int'l Airport (PNH)	605,557	657,118	22.7	23.8	8.5
Siem Reap Int'l Airport (REP)	818,979	852,937	30.7	30.9	4.1
Kong Keng (KOS)		7,506		0.3	
Land and Waterways	1,241,779	1,239,132	46.6	44.9	-0.2
Land	1,160,017	1,143,455	43.5	41.5	-1.4
Waterways	81,762	95,677	3.1	3.5	17.0
Total	2,666,315	2,756,693	100.0	100.0	3.4

2. Top ten markets arrivals in January - July 2016



II. OUTBOUND TOURISM

Outbound tourism in January - July 2016

	Outbound tourism		Change (%)
	2015	2016	2016*/15
Cambodian Outbound Tourists	649,706	815,057	25.5
International Tourists Departure	2,560,288	2,585,279	1.0

III. INTERNAL TOURISM

Foreign visitor arrivals to the regions in January - July 2016

	Arrivals		Share (%)		Change (%)
	2015	2016	2015	2016	2016*/15
Phnom Penh & Surrounding	1,405,991	1,492,281	45.4	46.4	6.1
Siem Reap Angkor	1,260,324	1,264,412	40.7	39.3	0.3
Coastal Areas	394,990	417,618	12.7	13.0	5.7
Eco-tourism Areas	38,893	39,298	1.3	1.2	1.0
Total	3,100,198	3,213,609	100.0	100.0	3.7

International Tourist Arrivals to Cambodia by Country of Residence in January - July 2016

(by all means of transportation)

Regions Country of Residence	2015	2016			Total	Female	Share	Change
		Purposes of Visit					(%)	(%)
		Holiday	Business	Others			2016*	2016*/15
Grand Total	2,666,315	2,407,469	201,583	147,641	2,756,693	1,182,585	100.0	3.4
Asia and the Pacific	2,048,743	1,775,414	175,076	134,047	2,084,537	878,253	75.6	1.7
ASEAN (Southeast Asia)	1,115,454	930,366	68,024	118,613	1,117,003	464,581	40.5	0.1
Brunei Darussalam	486	430	7	37	474	181	0.0	-2.5
Indonesia	23,696	16,257	8,126	3,102	27,485	7,303	1.0	16.0
Lao PDR	199,364	141,312	129	9,022	150,463	81,241	5.5	-24.5
Malaysia	80,691	74,672	6,328	2,023	83,023	27,268	3.0	2.9
Myanmar	5,241	6,161	350	757	7,268	3,034	0.3	38.7
Philippines	47,284	47,103	7,120	7,298	61,521	31,299	2.2	30.1
Singapore	34,660	34,791	1,984	1,098	37,873	12,091	1.4	9.3
Thailand	162,268	164,406	12,143	19,728	196,277	75,590	7.1	21.0
Vietnam	561,764	445,234	31,837	75,548	552,619	226,574	20.0	-1.6
Northeast Asia	822,272	728,809	99,412	10,214	838,435	360,253	30.4	2.0
China	395,752	374,880	64,096	5,981	444,957	197,568	16.1	12.4
Hong Kong (China)	6,753	10,070	162	44	10,276	4,871	0.4	52.2
Japan	102,482	87,208	13,778	1,647	102,633	39,115	3.7	0.1
Korea (ROK)	252,039	205,160	10,743	2,367	218,270	93,718	7.9	-13.4
Macau (China)	258	195	11	27	233	73	0.0	-9.7
Mongolia	267	229	26	22	277	162	0.0	3.7
Taiwan (China)	64,721	51,067	10,596	126	61,789	24,746	2.2	-4.5
Southern Asia	23,036	23,113	3,026	3,018	29,157	7,565	1.1	26.6
Afghanistan	71	64	4	16	84	23	0.0	18.3
Bangladesh	1,145	737	221	120	1,078	160	0.0	-5.9
Bhutan	94	80	5	54	139	49	0.0	47.9
India	18,631	19,722	1,988	2,619	24,329	6,544	0.9	30.6
Nepal	1,335	1,083	191	88	1,362	346	0.0	2.0
Pakistan	792	545	257	61	863	152	0.0	9.0
Sri Lanka	968	882	360	60	1,302	291	0.0	34.5
Oceania	85,447	90,843	4,477	1,017	96,337	44,453	3.5	12.7
Australia	72,581	78,137	3,752	921	82,810	38,233	3.0	14.1
Fiji	100	69	18	19	106	36	0.0	6.0
New Zealand	12,766	12,637	707	77	13,421	6,184	0.5	5.1
Other Asia & the Pacific	2,534	2,283	137	1,185	3,605	1,401	0.1	42.3
Europe	413,178	419,259	17,555	7,341	444,155	200,691	16.1	7.5
Northern Europe	128,411	126,251	5,716	1,421	133,388	58,083	4.8	3.9
Denmark	7,862	7,553	232	81	7,866	3,410	0.3	0.1
Finland	4,318	3,670	153	60	3,883	1,553	0.1	-10.1
Iceland	433	475	9	16	500	206	0.0	15.5
Ireland	6,909	6,818	251	60	7,129	3,371	0.3	3.2
Norway	6,229	6,227	156	45	6,428	2,980	0.2	3.2
Sweden	10,307	10,736	410	120	11,266	4,767	0.4	9.3
United Kingdom	92,353	90,772	4,505	1,039	96,316	41,796	3.5	4.3
Western Europe	182,326	193,475	8,591	3,255	205,321	91,880	7.4	12.6
Austria	6,077	6,726	131	49	6,906	3,065	0.3	13.6
Belgium	9,979	9,590	443	225	10,258	4,319	0.4	2.8
France	84,841	80,960	5,066	1,491	87,517	39,431	3.2	3.2
Germany	51,050	62,467	1,426	1,031	64,924	29,228	2.4	27.2
Luxembourg	388	477	9	11	497	215	0.0	28.1
Monaco	48	26	2	9	37	9	0.0	-22.9
Netherlands	16,856	16,744	819	222	17,785	7,972	0.6	5.5
Switzerland	13,087	16,485	695	217	17,397	7,641	0.6	32.9
Central / Eastern Europe	61,010	54,941	1,592	977	57,510	29,582	2.1	-5.7
Bulgaria	1,001	987	18	28	1,033	528	0.0	3.2
Czech Republic	3,526	3,325	54	39	3,418	1,509	0.1	-3.1
Estonia	1,146	1,106	19	10	1,135	504	0.0	-1.0
Hungary	2,669	2,889	85	33	3,007	1,464	0.1	12.7
Kazakhstan	1,606	895	144	14	1,053	528	0.0	-34.4
Kyrgyzstan	100	68	14	14	96	41	0.0	-4.0
Latvia	506	492	24	15	531	258	0.0	4.9
Lithuania	1,070	1,193	31	12	1,236	628	0.0	15.5
Poland	7,880	8,509	142	51	8,702	4,291	0.3	10.4
Romania	1,420	1,317	43	34	1,394	785	0.1	-1.8
Russian Federation	34,665	29,373	819	228	30,420	16,388	1.1	-12.2
Slovakia	1,502	1,640	43	20	1,703	783	0.1	13.4
Ukraine	3,433	2,910	116	455	3,481	1,739	0.1	1.4
Uzbekistan	486	237	40	24	301	136	0.0	-38.1

Source: Statistics and Tourism Information Department, MOT

International Tourist Arrivals to Cambodia by Country of Residence in January - July 2016

(by all means of transportation)

Regions Country of Residence	2015	2016			Total	Female	Share	Change
		Purposes of Visit					(%)	(%)
		Holiday	Business	Others			2016*	2016*/15
Grand Total	2,666,315	2,407,469	201,583	147,641	2,756,693	1,182,585	100.0	3.4
Southern Europe	39,431	42,528	1,563	1,035	45,126	20,026	1.6	14.4
Croatia	738	641	26	64	731	327	0.0	-0.9
Greece	930	775	43	93	911	348	0.0	-2.0
Italy	15,393	17,106	700	269	18,075	7,582	0.7	17.4
Malta	264	280	3	12	295	126	0.0	11.7
Portugal	2,817	3,332	115	73	3,520	1,665	0.1	25.0
Serbia	515	439	20	235	694	312	0.0	34.8
Slovenia	695	662	41	11	714	335	0.0	2.7
Spain	14,532	16,057	345	107	16,509	7,909	0.6	13.6
Turkey	3,547	3,236	270	171	3,677	1,422	0.1	3.7
Other Europe	2,000	2,064	93	653	2,810	1,120	0.1	40.5
Americas	191,297	199,617	7,555	5,344	212,516	97,845	7.7	11.1
North America	170,302	175,519	7,244	4,205	186,968	85,769	6.8	9.8
Canada	35,874	35,692	1,394	368	37,454	17,616	1.4	4.4
Mexico	4,118	4,367	41	62	4,470	2,263	0.2	8.5
United States	130,310	135,460	5,809	3,775	145,044	65,890	5.3	11.3
Central America	404	448	20	50	518	197	0.0	28.2
Costa Rica	273	325	5	11	341	154	0.0	24.9
Honduras	68	87	10	28	125	16	0.0	83.8
Jamaica	63	36	5	11	52	27	0.0	-17.5
South America	19,098	22,219	231	639	23,089	11,079	0.8	20.9
Argentina	5,211	8,382	40	37	8,459	4,000	0.3	62.3
Brazil	6,666	5,944	95	84	6,123	2,916	0.2	-8.1
Chile	3,297	4,149	27	40	4,216	2,196	0.2	27.9
Colombia	1,772	1,671	38	26	1,735	856	0.1	-2.1
Ecuador	353	316	8	11	335	172	0.0	-5.1
Peru	517	618	6	419	1,043	335	0.0	101.7
Uruguay	767	924	8	11	943	493	0.0	22.9
Venezuela	515	215	9	11	235	111	0.0	-54.4
Other America	1,493	1,431	60	450	1,941	800	0.1	30.0
Africa	4,943	4,200	882	663	5,745	2,291	0.2	16.2
North Africa	460	428	37	38	503	203	0.0	9.3
Morocco	275	241	31	10	282	124	0.0	2.5
Sudan	83	50	0	16	66	14	0.0	-20.5
Tunisia	102	137	6	12	155	65	0.0	52.0
Subsaharan Africa	4,150	3,440	818	504	4,762	1,928	0.2	14.7
Cameroon	147	48	9	8	65	18	0.0	-55.8
Congo	54	47	3	22	72	24	0.0	33.3
Ghana	51	60	9	56	125	30	0.0	145.1
Kenya	184	173	15	28	216	105	0.0	17.4
Liberia	33	20	0	9	29	5	0.0	-12.1
Nigeria	615	305	482	23	810	70	0.0	31.7
South Africa	2,892	2,570	271	158	2,999	1,525	0.1	3.7
Tanzania	44	80	4	171	255	47	0.0	479.5
Uganda	64	67	4	7	78	38	0.0	21.9
Zimbabwe	66	70	21	22	113	66	0.0	71.2
Other Africa	333	332	27	121	480	160	0.0	44.1
Middle East	8,154	8,979	515	246	9,740	3,505	0.4	19.5
Egypt	335	357	37	14	408	112	0.0	21.8
Iran	310	245	23	19	287	101	0.0	-7.4
Iraq	75	72	8	10	90	11	0.0	20.0
Israel	5,458	6,073	150	35	6,258	2,741	0.2	14.7
Jordan	207	636	179	12	827	175	0.0	299.5
Kuwait	550	409	5	18	432	34	0.0	-21.5
Oman	135	100	0	9	109	20	0.0	-19.3
Palestine	39	34	3	7	44	16	0.0	12.8
Qatar	82	37	3	10	50	16	0.0	-39.0
Saudi Arabia	204	178	12	13	203	15	0.0	-0.5
Syria	125	362	62	9	433	102	0.0	246.4
United Arab Emirates	256	82	2	10	94	23	0.0	-63.3
Yemen	120	151	8	10	169	31	0.0	40.8
Other Middle East	258	243	23	70	336	108	0.0	30.2

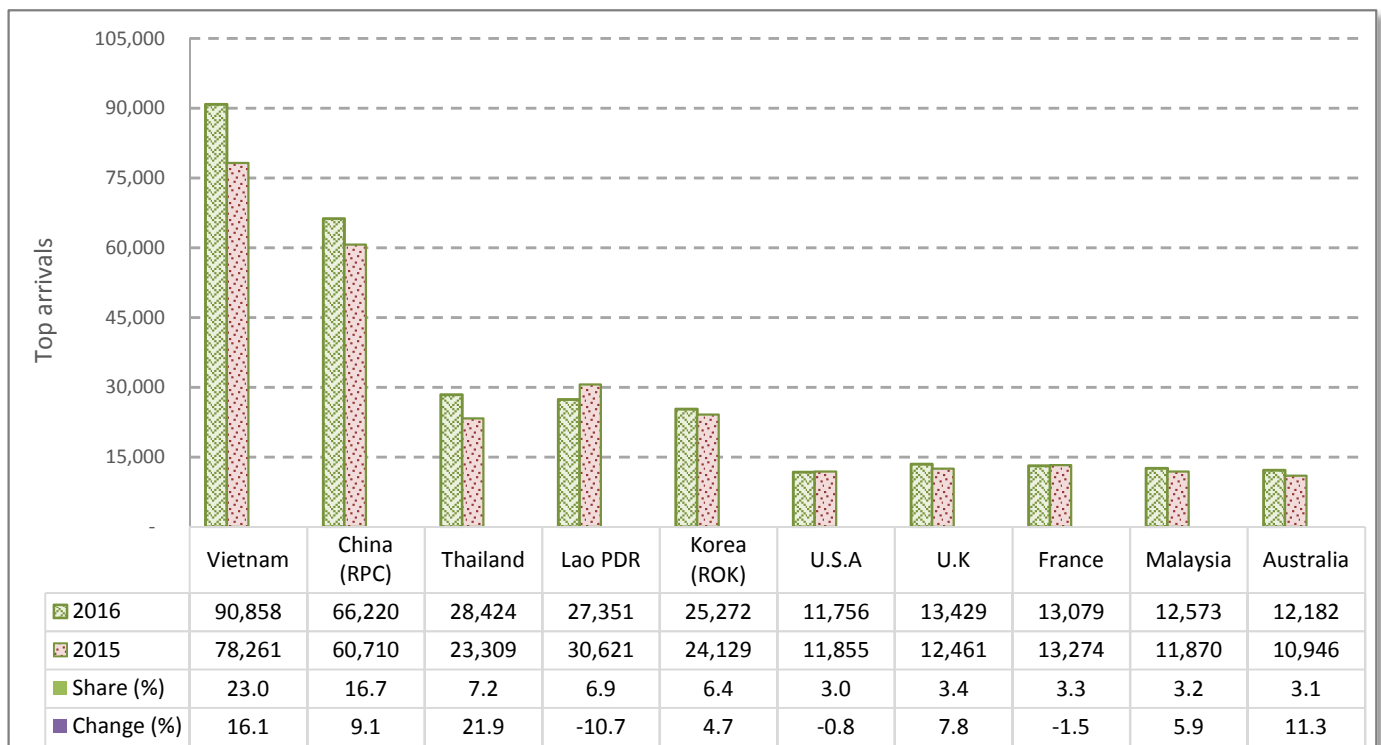
CAMBODIA: TOURISM STATISTICS REPORT IN JULY 2016

I. INBOUND TOURISM

1. International tourist arrivals in July 2016

	Inbound tourism		Share (%)		Change (%)
	2015	2016	2015	2016	2016*/15
Air	193,639	212,735	53.2	53.8	9.9
Phnom Penh Int'l Airport (PNH)	93,931	97,789	25.8	24.7	4.1
Siem Reap Int'l Airport (REP)	99,708	111,266	27.4	28.1	11.6
Kong Keng (KOS)		3,680		0.9	
Land and Waterways	170,686	183,026	46.8	46.2	7.2
Land	160,973	174,011	44.2	44.0	8.1
Waterways	9,713	9,015	2.7	2.3	-7.2
Total	364,325	395,761	100.0	100.0	8.6

2. Top ten markets arrivals in July 2016



II. OUTBOUND TOURISM

Outbound tourism in July 2016

	Outbound tourism		Change (%)
	2015	2016	2016*/15
Cambodian Outbound Tourists	96,692	115,403	19.4
International Tourists Departure	331,103	361,376	9.1

III. INTERNAL TOURISM

Foreign visitor arrivals to the regions in July 2016

	Arrivals		Share (%)		Change (%)
	2015	2016	2015	2016	2016*/15
Phnom Penh & Surrounding	209,683	227,031	51.8	51.8	8.3
Siem Reap Angkor	154,642	168,730	38.2	38.5	9.1
Coastal Areas	36,682	38,699	9.1	8.8	5.5
Eco-tourism Areas	3,610	3,801	0.9	0.9	5.3
Total	404,617	438,261	100.0	100.0	8.3

International Tourist Arrivals to Cambodia by Country of Residence in July 2016

(by all means of transportation)

Regions Country of Residence	2015	2016			Total	Female	Share	Change
		Purposes of Visit					(%)	(%)
		Holiday	Business	Others			2016*	2016*/15
Grand Total	364,325	346,604	27,335	21,822	395,761	174,485	100.0	8.6
Asia and the Pacific	284,548	266,898	23,670	20,198	310,766	135,295	78.5	9.2
ASEAN (Southeast Asia)	160,918	151,081	9,172	18,515	178,768	78,221	45.2	11.1
Brunei Darussalam	100	96	0	13	109	34	0.0	9.0
Indonesia	3,814	2,781	1,133	305	4,219	1,320	1.1	10.6
Lao PDR	30,621	26,128	15	1,208	27,351	15,842	6.9	-10.7
Malaysia	11,870	10,939	788	846	12,573	3,987	3.2	5.9
Myanmar	601	814	51	116	981	369	0.2	63.2
Philippines	7,589	7,380	872	909	9,161	4,778	2.3	20.7
Singapore	4,753	4,424	298	370	5,092	1,383	1.3	7.1
Thailand	23,309	23,071	1,782	3,571	28,424	11,217	7.2	21.9
Vietnam	78,261	75,448	4,233	11,177	90,858	39,291	23.0	16.1
Northeast Asia	106,618	98,373	13,484	1,135	112,992	49,065	28.6	6.0
China	60,710	56,935	8,562	723	66,220	30,210	16.7	9.1
Hong Kong (China)	625	1,048	19	2	1,069	519	0.3	71.0
Japan	11,855	9,665	1,946	145	11,756	4,219	3.0	-0.8
Korea (ROK)	24,129	23,472	1,547	253	25,272	10,431	6.4	4.7
Macau (China)	21	42	1	5	48	28	0.0	128.6
Mongolia	25	17	4	1	22	14	0.0	-12.0
Taiwan (China)	9,253	7,194	1,405	6	8,605	3,644	2.2	-7.0
Southern Asia	3,455	3,312	381	331	4,024	958	1.0	16.5
Afghanistan	17	4	1	4	9	2	0.0	-47.1
Bangladesh	152	85	26	12	123	17	0.0	-19.1
Bhutan	6	12	0	3	15	5	0.0	150.0
India	2,792	2,838	260	266	3,364	807	0.9	20.5
Nepal	267	148	25	15	188	50	0.0	-29.6
Pakistan	109	88	25	6	119	22	0.0	9.2
Sri Lanka	112	137	44	25	206	55	0.1	83.9
Oceania	13,191	13,765	617	159	14,541	6,872	3.7	10.2
Australia	10,946	11,540	505	137	12,182	5,754	3.1	11.3
Fiji	28	9	4	9	22	8	0.0	-21.4
New Zealand	2,217	2,216	108	13	2,337	1,110	0.6	5.4
Other Asia & the Pacific	366	367	16	58	441	179	0.1	20.5
Europe	54,177	54,695	2,383	794	57,872	27,070	14.6	6.8
Northern Europe	16,830	16,964	772	238	17,974	8,283	4.5	6.8
Denmark	1,103	990	33	17	1,040	485	0.3	-5.7
Finland	210	202	16	10	228	90	0.1	8.6
Iceland	31	31	1	2	34	14	0.0	9.7
Ireland	1,584	1,595	36	7	1,638	880	0.4	3.4
Norway	760	906	26	2	934	427	0.2	22.9
Sweden	681	633	24	14	671	268	0.2	-1.5
United Kingdom	12,461	12,607	636	186	13,429	6,119	3.4	7.8
Western Europe	25,984	25,501	1,169	363	27,033	12,528	6.8	4.0
Austria	807	687	12	10	709	334	0.2	-12.1
Belgium	2,263	2,276	74	20	2,370	1,113	0.6	4.7
France	13,274	12,240	674	165	13,079	6,148	3.3	-1.5
Germany	4,047	4,187	170	76	4,433	1,965	1.1	9.5
Luxembourg	40	52	2	1	55	26	0.0	37.5
Monaco	8	2	1	2	5	1	0.0	-37.5
Netherlands	3,758	3,535	119	51	3,705	1,719	0.9	-1.4
Switzerland	1,787	2,522	117	38	2,677	1,222	0.7	49.8
Central / Eastern Europe	4,199	4,042	196	89	4,327	2,264	1.1	3.0
Bulgaria	52	54	1	5	60	27	0.0	15.4
Czech Republic	228	245	12	3	260	119	0.1	14.0
Estonia	34	22	1	2	25	11	0.0	-26.5
Hungary	206	162	13	1	176	89	0.0	-14.6
Kazakhstan	139	99	14	3	116	61	0.0	-16.5
Kyrgyzstan	11	4	5	3	12	3	0.0	9.1
Latvia	28	16	3	4	23	10	0.0	-17.9
Lithuania	50	53	3	2	58	31	0.0	16.0
Poland	620	756	19	11	786	385	0.2	26.8
Romania	91	80	4	2	86	53	0.0	-5.5
Russian Federation	2,287	2,163	100	45	2,308	1,271	0.6	0.9
Slovakia	126	163	1	1	165	81	0.0	31.0
Ukraine	230	198	18	4	220	109	0.1	-4.3
Uzbekistan	97	27	2	3	32	14	0.0	-67.0

Source: Statistics and Tourism Information Department, MOT

International Tourist Arrivals to Cambodia by Country of Residence in July 2016

(by all means of transportation)

Regions Country of Residence	2015	2016			Total	Female	Share	Change
		Purposes of Visit					(%)	(%)
		Holiday	Business	Others			2016*	2016*/15
Grand Total	364,325	346,604	27,335	21,822	395,761	174,485	100.0	8.6
Southern Europe	6,948	7,926	235	69	8,230	3,852	2.1	18.5
Croatia	63	55	2	1	58	30	0.0	-7.9
Greece	104	93	5	2	100	35	0.0	-3.8
Italy	1,784	2,029	104	13	2,146	924	0.5	20.3
Malta	30	45	0	5	50	27	0.0	66.7
Portugal	399	418	15	4	437	203	0.1	9.5
Serbia	28	25	5	3	33	21	0.0	17.9
Slovenia	83	86	5	2	93	52	0.0	12.0
Spain	4,095	4,736	49	12	4,797	2,371	1.2	17.1
Turkey	362	439	50	27	516	189	0.1	42.5
Other Europe	216	262	11	35	308	143	0.1	42.6
Americas	23,863	23,521	1,056	711	25,288	11,572	6.4	6.0
North America	21,580	21,748	1,025	657	23,430	10,659	5.9	8.6
Canada	3,592	3,405	210	55	3,670	1,790	0.9	2.2
Mexico	996	952	5	4	961	499	0.2	-3.5
United States	16,992	17,391	810	598	18,799	8,370	4.8	10.6
Central America	60	22	2	5	29	15	0.0	-51.7
Costa Rica	38	18	0	1	19	13	0.0	-50.0
Honduras	7	2	2	1	5	0	0.0	-28.6
Jamaica	15	2	0	3	5	2	0.0	-66.7
South America	2,062	1,582	21	23	1,626	814	0.4	-21.1
Argentina	346	262	5	1	268	129	0.1	-22.5
Brazil	670	571	6	7	584	297	0.1	-12.8
Chile	307	283	1	4	288	145	0.1	-6.2
Colombia	285	258	8	3	269	138	0.1	-5.6
Ecuador	31	45	0	1	46	25	0.0	48.4
Peru	85	99	1	2	102	45	0.0	20.0
Uruguay	22	33	0	1	34	19	0.0	54.5
Venezuela	316	31	0	4	35	16	0.0	-88.9
Other America	161	169	8	26	203	84	0.1	26.1
Africa	715	545	125	82	752	262	0.2	5.2
North Africa	54	55	4	4	63	27	0.0	16.7
Morocco	36	39	3	1	43	19	0.0	19.4
Sudan	10	6	0	1	7	3	0.0	-30.0
Tunisia	8	10	1	2	13	5	0.0	62.5
Subsaharan Africa	625	450	118	70	638	217	0.2	2.1
Cameroon	46	13	0	1	14	6	0.0	-69.6
Congo	15	3	0	1	4	1	0.0	-73.3
Ghana	10	5	1	6	12	3	0.0	20.0
Kenya	25	31	5	4	40	19	0.0	60.0
Liberia	10	4	0	2	6	0	0.0	-40.0
Nigeria	72	50	63	2	115	6	0.0	59.7
South Africa	416	326	47	23	396	170	0.1	-4.8
Tanzania	6	3	0	29	32	2	0.0	433.3
Uganda	19	3	0	1	4	3	0.0	-78.9
Zimbabwe	6	12	2	1	15	7	0.0	150.0
Other Africa	36	40	3	8	51	18	0.0	41.7
Middle East	1,022	945	101	37	1,083	286	0.3	6.0
Egypt	42	30	8	3	41	7	0.0	-2.4
Iran	63	34	4	5	43	13	0.0	-31.7
Iraq	16	8	4	2	14	1	0.0	-12.5
Israel	430	446	15	3	464	180	0.1	7.9
Jordan	22	26	4	1	31	5	0.0	40.9
Kuwait	103	105	1	1	107	4	0.0	3.9
Oman	16	15	0	2	17	3	0.0	6.3
Palestine	5	2	0	1	3	1	0.0	-40.0
Qatar	8	10	0	3	13	3	0.0	62.5
Saudi Arabia	28	22	2	1	25	1	0.0	-10.7
Syria	20	169	59	2	230	49	0.1	1050.0
United Arab Emirates	204	5	1	2	8	1	0.0	-96.1
Yemen	19	19	1	3	23	1	0.0	21.1
Other Middle East	46	54	2	8	64	17	0.0	39.1