



KINGDOM OF CAMBODIA
NATION RELIGION KING



TOURISM STATISTICS REPORT

May 2015

MINISTRY OF TOURISM

Statistics and Tourism Information Department

No. A3, Street 169, Sangkat Veal Vong, Khan 7 Makara, Phnom Penh, Cambodia.

Fax: +855 23 885003

E-mail: kong@mot.gov.kh

Web site: www.mot.gov.kh

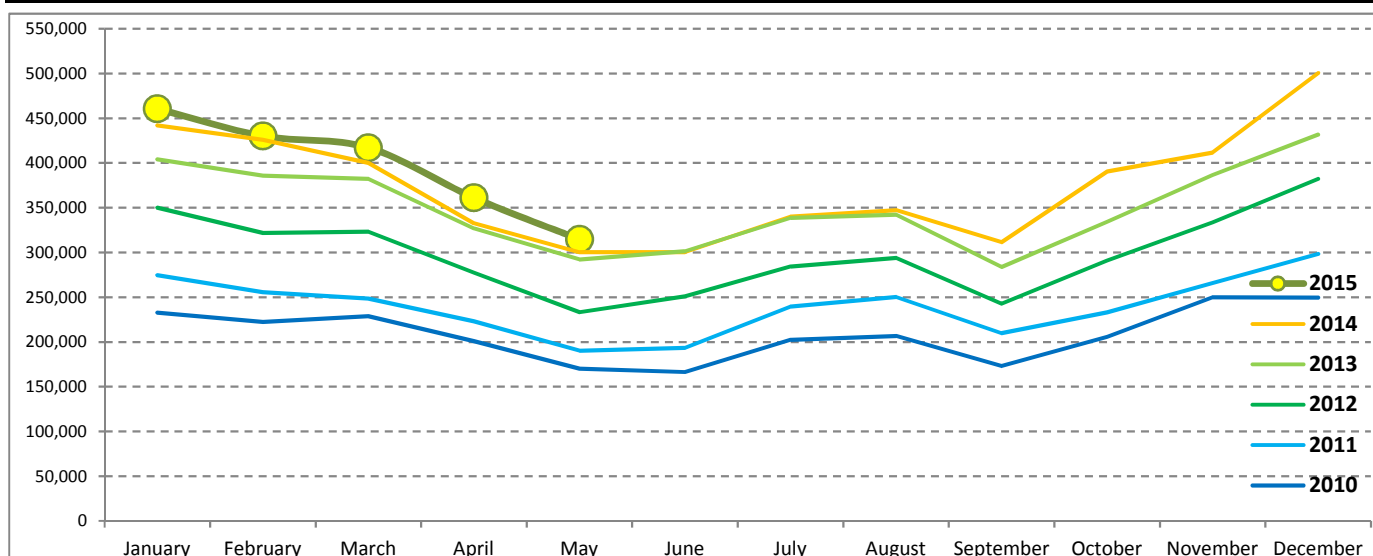
Tourism Highlights

International Tourist Arrivals, Average Length of Stay, Hotels Occupancy & Tourism Receipts 1993 - 2014

Years	Int'l Tourist Arrivals		Average Length	Hotels Occupancy	Tourism Receipts
	Number	Change (%)	of Stay (Days)	(%)	(Million US\$)
1993	118,183	-	N/A	N/A	N/A
1994	176,617	49.4	N/A	N/A	N/A
1995	219,680	24.4	8.00	37.00	100
1996	260,489	18.6	7.50	40.00	118
1997	218,843	-16.0	6.40	30.00	103
1998	286,524	30.9	5.20	40.00	166
1999	367,743	28.3	5.50	44.00	190
2000	466,365	26.8	5.50	45.00	228
2001	604,919	29.7	5.50	48.00	304
2002	786,524	30.0	5.80	50.00	379
2003	701,014	-10.9	5.50	50.00	347
2004	1,055,202	50.5	6.30	52.00	578
2005	1,421,615	34.7	6.30	52.00	832
2006	1,700,041	19.6	6.50	54.79	1,049
2007	2,015,128	18.5	6.50	54.79	1,400
2008	2,125,465	5.5	6.65	62.68	1,595
2009	2,161,577	1.7	6.45	63.57	1,561
2010	2,508,289	16.0	6.45	65.74	1,786
2011	2,881,862	14.9	6.50	66.15	1,912
2012	3,584,307	24.4	6.30	68.49	2,210
2013	4,210,165	17.5	6.75	69.53	2,547
2014	4,502,775	7.0	6.50	67.55	2,736

International Tourist Arrivals to Cambodia

Months	2010	2011	2012	2013	2014	2015	Change (%)				
							11/10	12/11	13/12	14/13	15*/14
Q1	683,692	778,467	995,210	1,172,072	1,267,922	1,307,836	13.9	27.8	17.8	8.2	3.1
January	232,590	274,471	350,257	404,106	442,045	460,577	18.0	27.6	15.4	9.4	4.2
February	222,354	255,499	321,870	385,760	425,801	430,207	14.9	26.0	19.8	10.4	1.0
March	228,748	248,497	323,083	382,206	400,076	417,052	8.6	30.0	18.3	4.7	4.2
Q2	537,464	606,562	761,442	920,527	933,446	675,887	12.9	25.5	20.9	1.4	
April	200,965	223,032	277,304	327,000	332,690	361,139	11.0	24.3	17.9	1.7	8.6
May	170,164	190,258	233,220	292,115	300,302	314,748	11.8	22.6	25.3	2.8	4.8
June	166,335	193,272	250,918	301,412	300,454		16.2	29.8	20.1	-0.3	
Q3	582,024	699,760	820,888	964,612	998,690	0	20.2	17.3	17.5	3.5	
July	202,349	239,527	284,282	338,761	340,091		18.4	18.7	19.2	0.4	
August	206,563	250,429	293,859	342,064	347,211		21.2	17.3	16.4	1.5	
September	173,112	209,804	242,747	283,787	311,388		21.2	15.7	16.9	9.7	
Q4	705,109	797,073	1,006,767	1,152,954	1,302,717	0	13.0	26.3	14.5	13.0	
October	205,515	233,190	290,959	334,410	390,637		13.5	24.8	14.9	16.8	
November	249,892	265,539	333,482	386,737	411,501		6.3	25.6	16.0	6.4	
December	249,702	298,344	382,326	431,807	500,579		19.5	28.1	12.9	15.9	
Total	2,508,289	2,881,862	3,584,307	4,210,165	4,502,775	1,983,723	14.9	24.4	17.5	7.0	4.4



Source: Statistics and Tourism Information Department, MOT

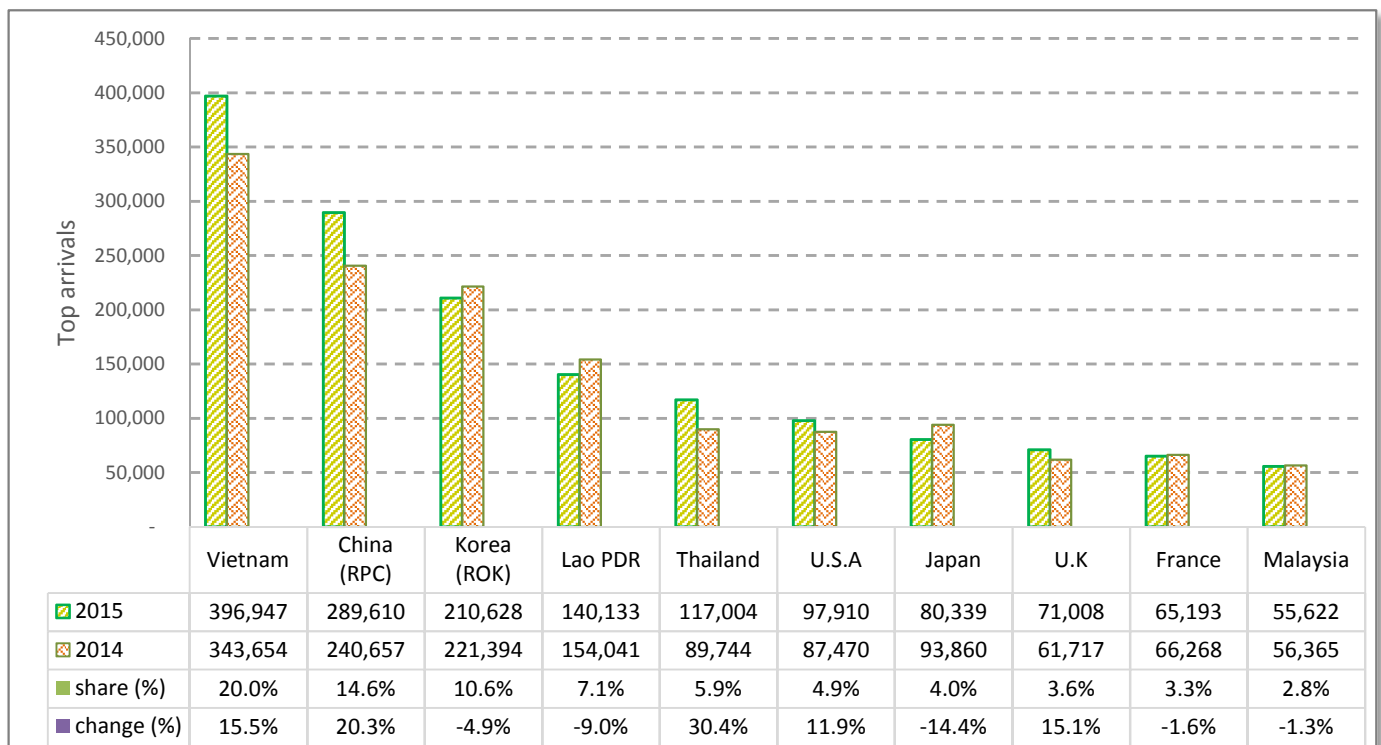
CAMBODIA: TOURISM STATISTICS REPORT IN THE FIRST FIVE MONTHS 2015

I. INBOUND TOURISM

1. International tourist arrivals in January - May 2015

	Inbound tourism		share (%)		change (%)
	2014	2015	2014	2015	2015*/14
Air	997,721	1,075,945	52.5	54.2	7.8
Phnom Penh Int'l Airport (PNH)	376,723	431,531	19.8	21.8	14.5
Siem Reap Int'l Airport (REP)	620,998	644,414	32.7	32.5	3.8
Land and Water ways	903,193	907,778	47.5	45.8	0.5
Land	862,466	844,009	45.4	42.5	-2.1
Waterway	40,727	63,769	2.1	3.2	56.6
Total	1,900,914	1,983,723	100.0	100.0	4.4

2. Top ten markets arrivals in January - May 2015



II. OUTBOUND TOURISM

Outbound tourism in January - May 2015

	Outbound tourism		change (%)
	2014	2015	2015*/14
Cambodian Outbound Tourists	384,132	461,581	20.2
International Tourists Departure	1,910,229	1,936,228	1.4

III. INTERNAL TOURISM

Foreign visitor arrivals to the regions in January - May 2015

	Arrivals		share (%)		change (%)
	2014	2015	2014	2015	2015*/14
Phnom Penh & Surrounding	787,402	992,727	35.8	42.4	26.1
Siem Reap Angkor	1,113,512	990,996	50.7	42.4	-11.0
Coastal Areas	267,517	326,053	12.2	13.9	21.9
Eco-tourism Areas	29,609	29,932	1.3	1.3	1.1
Total	2,198,040	2,339,708	100.0	100.0	6.4

International Tourist Arrivals to Cambodia by Country of Residence in January - May 2015

(by all mean of transportations)

Regions Country of Residence	2014	2015			Total	Female	Share	Change
		Purpose of Visit					(%)	(%)
		Holiday	Business	Other			2015*	2015*/14
Grand Total	1,900,914	1,797,404	118,871	67,448	1,983,723	882,567	100.0	4.4
Asia and the Pacific	1,409,857	1,340,793	100,712	57,569	1,499,074	668,366	75.6	6.3
ASEAN (Southeast Asia)	732,346	696,617	37,226	52,021	785,864	358,050	39.6	7.3
Brunei Darussalam	364	269	13	45	327	146	0.0	-10.2
Indonesia	14,210	10,862	5,306	814	16,982	4,521	0.9	19.5
Lao PDR	154,041	135,314	68	4,751	140,133	82,282	7.1	-9.0
Malaysia	56,365	51,855	3,590	177	55,622	17,781	2.8	-1.3
Myanmar	2,566	3,371	234	244	3,849	1,715	0.2	50.0
Philippines	48,402	27,020	4,350	518	31,888	18,323	1.6	-34.1
Singapore	23,000	21,887	1,091	134	23,112	7,326	1.2	0.5
Thailand	89,744	104,574	6,734	5,696	117,004	48,706	5.9	30.4
Vietnam	343,654	341,465	15,840	39,642	396,947	177,250	20.0	15.5
Northeast Asia	600,241	571,767	58,661	3,411	633,839	277,430	32.0	5.6
China	240,657	251,329	36,917	1,364	289,610	132,186	14.6	20.3
Hong Kong (China)	2,737	5,222	65	15	5,302	2,488	0.3	93.7
Japan	93,860	70,781	8,546	1,012	80,339	31,536	4.0	-14.4
Korea (ROK)	221,394	203,310	6,376	942	210,628	91,389	10.6	-4.9
Macau (China)		205	2	4	211	93	0.0	
Mongolia	155	204	8	10	222	123	0.0	43.2
Taiwan (China)	41,438	40,716	6,747	64	47,527	19,615	2.4	14.7
Southern Asia	13,433	13,692	1,924	899	16,515	4,673	0.8	22.9
Afghanistan	123	24	3	9	36	8	0.0	-70.7
Bangladesh	577	597	155	57	809	132	0.0	40.2
Bhutan	43	66	2	10	78	46	0.0	81.4
India	10,790	11,601	1,239	580	13,420	4,025	0.7	24.4
Nepal	657	658	121	130	909	223	0.0	38.4
Pakistan	518	334	143	56	533	85	0.0	2.9
Srilanka	725	412	261	57	730	154	0.0	0.7
Oceania	62,652	57,702	2,737	923	61,362	27,546	3.1	-2.1
Australia	54,423	49,003	2,350	813	52,166	23,435	2.6	-4.1
Fiji	71	38	19	9	66	20	0.0	-7.0
New Zealand	8,158	8,661	368	101	9,130	4,091	0.5	11.9
Other Asia & the Pacific	1,185	1,015	164	315	1,494	667	0.1	26.1
Europe	351,934	309,835	12,474	5,497	327,806	143,070	16.5	-6.9
Northern Europe	91,578	93,350	5,424	1,287	100,061	41,463	5.0	9.3
Denmark	6,807	6,053	153	83	6,289	2,754	0.3	-7.6
Finland	3,762	3,676	124	71	3,871	1,510	0.2	2.9
Iceland	352	359	5	12	376	154	0.0	6.8
Ireland	4,096	4,274	165	65	4,504	1,873	0.2	10.0
Norway	5,163	4,815	86	44	4,945	2,252	0.2	-4.2
Sweden	9,681	8,752	202	114	9,068	3,750	0.5	-6.3
United Kingdom	61,717	65,421	4,689	898	71,008	29,170	3.6	15.1
Western Europe	142,358	136,863	4,864	2,245	143,972	62,279	7.3	1.1
Austria	4,663	4,865	102	59	5,026	2,068	0.3	7.8
Belgium	6,860	6,615	234	162	7,011	2,871	0.4	2.2
France	66,268	61,266	2,845	1,082	65,193	28,901	3.3	-1.6
Germany	42,516	42,601	876	579	44,056	18,756	2.2	3.6
Luxembourg	232	314	2	7	323	142	0.0	39.2
Monaco	33	27	2	5	34	16	0.0	3.0
Netherlands	11,997	11,019	509	243	11,771	4,971	0.6	-1.9
Switzerland	9,789	10,156	294	108	10,558	4,554	0.5	7.9
Central / Eastern Europe	90,212	51,233	1,104	1,027	53,364	26,604	2.7	-40.8
Bulgaria	650	788	12	99	899	405	0.0	38.3
Czech Republic	2,954	3,073	33	51	3,157	1,312	0.2	6.9
Estonia	908	1,033	16	14	1,063	455	0.1	17.1
Hungary	1,803	2,198	54	74	2,326	1,027	0.1	29.0
Kazakhstan	1,664	1,273	86	18	1,377	752	0.1	-17.2
Kyrgyzstan		70	7	5	82	37	0.0	
Latvia		393	13	23	429	197	0.0	
Lithuania	919	915	8	35	958	480	0.0	4.2
Poland	6,346	6,739	50	167	6,956	3,449	0.4	9.6
Romania	934	1,098	40	135	1,273	611	0.1	36.3
Russian Federation	68,999	29,437	642	155	30,234	15,663	1.5	-56.2
Slovakia	1,337	1,245	21	37	1,303	557	0.1	-2.5
Ukraine	3,456	2,690	98	206	2,994	1,459	0.2	-13.4
Uzbekistan	242	281	24	8	313	200	0.0	29.3

Source: Statistics and Tourism Information Department, MOT

International Tourist Arrivals to Cambodia by Country of Residence in January - May 2015

(by all mean of transportations)

Regions Country of Residence	2014	2015			Total	Female	Share	Change
		Purpose of Visit					(%)	(%)
		Holiday	Business	Other			2015*	2015*/14
Grand Total	1,900,914	1,797,404	118,871	67,448	1,983,723	882,567	100.0	4.4
Southern Europe	26,802	27,516	924	690	29,130	12,144	1.5	8.7
Croatia	415	511	16	118	645	253	0.0	55.4
Greece	599	731	32	25	788	302	0.0	31.6
Italy	13,018	12,170	361	130	12,661	5,154	0.6	-2.7
Malta		200	3	10	213	79	0.0	
Portugal	1,559	1,989	74	72	2,135	980	0.1	36.9
Serbia	323	375	8	84	467	204	0.0	44.6
Slovenia	544	531	12	25	568	246	0.0	4.4
Spain	8,062	8,430	208	111	8,749	3,933	0.4	8.5
Turkey	2,282	2,579	210	115	2,904	993	0.1	27.3
Other Europe	984	873	158	248	1,279	580	0.1	30.0
Americas	130,726	137,986	4,954	3,841	146,781	67,391	7.4	12.3
North America	116,259	121,847	4,655	3,282	129,784	59,085	6.5	11.6
Canada	26,804	27,961	1,013	305	29,279	13,357	1.5	9.2
Mexico	1,985	2,544	22	29	2,595	1,311	0.1	30.7
United States	87,470	91,342	3,620	2,948	97,910	44,417	4.9	11.9
Central America	136	225	13	68	306	143	0.0	
Costa Rica	136	184	5	16	205	104	0.0	50.7
Honduras		19	5	33	57	25	0.0	
Jamaica		22	3	19	44	14	0.0	
South America	13,663	15,340	169	222	15,731	7,751	0.8	15.1
Argentina	3,834	4,605	23	20	4,648	2,262	0.2	21.2
Brazil	4,993	5,371	60	79	5,510	2,654	0.3	10.4
Chile	3,012	2,724	17	32	2,773	1,400	0.1	-7.9
Colombia	781	1,206	33	18	1,257	649	0.1	60.9
Ecuador	145	260	12	10	282	148	0.0	94.5
Peru	334	346	10	25	381	204	0.0	14.1
Uruguay	564	691	7	17	715	354	0.0	26.8
Venezuela		137	7	21	165	80	0.0	
Other Americas	668	574	117	269	960	412	0.0	43.7
Africa	2,325	2,686	498	371	3,555	1,377	0.2	52.9
North Africa	34	299	26	33	358	144	0.0	
Morocco		186	18	10	214	91	0.0	
Sudan	34	40	3	15	58	22	0.0	70.6
Tunisia		73	5	8	86	31	0.0	
Subsaharan Africa	2,134	2,265	435	272	2,972	1,153	0.1	39.3
Cameroon	58	69	6	17	92	16	0.0	58.6
Congo	23	15	2	12	29	6	0.0	26.1
Ghana	60	22	5	5	32	5	0.0	-46.7
Kenya	87	119	8	7	134	65	0.0	54.0
Liberia	12	13	2	4	19	3	0.0	58.3
Nigeria	234	190	247	18	455	48	0.0	94.4
South Africa	1,637	1,756	154	188	2,098	970	0.1	28.2
Tanzania		20	2	7	29	8	0.0	
Uganda	23	24	3	4	31	8	0.0	34.8
Zimbabwe		37	6	10	53	24	0.0	
Other Africa	157	122	37	66	225	80	0.0	43.3
Middle East	6,072	6,104	233	170	6,507	2,363	0.3	7.2
Egypt	130	215	36	9	260	64	0.0	100.0
Iran	249	204	16	5	225	65	0.0	-9.6
Iraq	35	37	3	7	47	7	0.0	34.3
Israel	4,828	4,596	117	17	4,730	2,031	0.2	-2.0
Jordan		126	14	6	146	33	0.0	
Kuwait	419	364	2	29	395	24	0.0	-5.7
Oman	71	95	2	10	107	17	0.0	50.7
Palestine	31	16	5	6	27	5	0.0	-12.9
Qatar	17	54	2	13	69	24	0.0	305.9
Saudi Arabia	66	135	6	15	156	12	0.0	136.4
Syria		72	5	5	82	17	0.0	
United Arab Emirates	30	37	2	6	45	5	0.0	50.0
Yemen	92	60	3	8	71	14	0.0	-22.8
Other Middle East	104	93	20	34	147	45	0.0	41.3

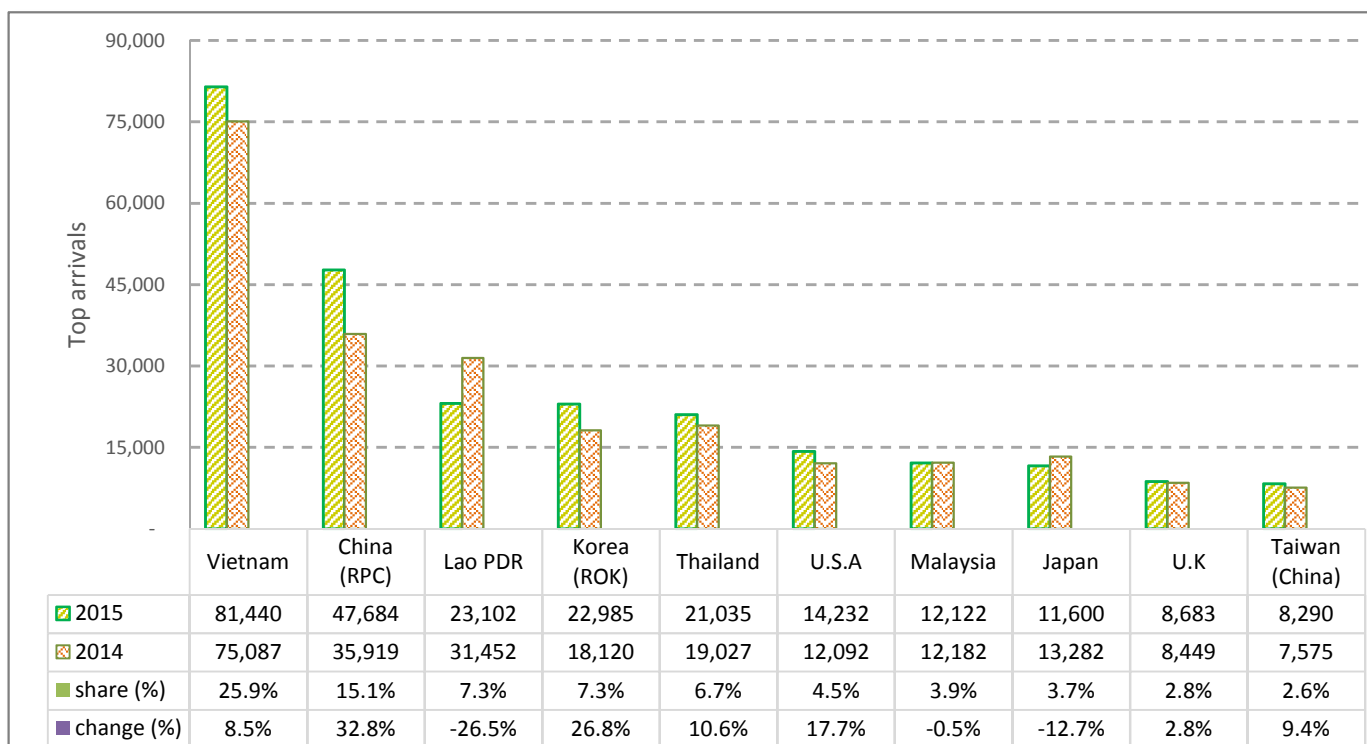
CAMBODIA: TOURISM STATISTICS REPORT IN MAY 2015

I. INBOUND TOURISM

1. International tourist arrivals in May 2015

	Inbound tourism		share (%)		change (%)
	2014	2015	2014	2015	2015*/14
Air	137,432	161,003	45.8	51.2	17.2
Phnom Penh Int'l Airport (PNH)	64,217	79,166	21.4	25.2	23.3
Siem Reap Int'l Airport (REP)	73,215	81,837	24.4	26.0	11.8
Land and Water ways	162,870	153,745	54.2	48.8	-5.6
Land	160,139	147,968	53.3	47.0	-7.6
Waterway	2,731	5,777	0.9	1.8	111.5
Total	300,302	314,748	100.0	100.0	4.8

2. Top ten markets arrivals in May 2015



II. OUTBOUND TOURISM

Outbound tourism in May 2015

	Outbound tourism		change (%)
	2014	2015	2015*/14
Cambodian Outbound Tourists	84,366	108,225	28.3
International Tourists Departure	320,101	331,254	3.5

III. INTERNAL TOURISM

Foreign visitor arrivals to the regions in May 2015

	Arrivals		share (%)		change (%)
	2014	2015	2014	2015	2015*/14
Phnom Penh & Surrounding	156,629	186,933	44.3	48.9	19.3
Siem Reap Angkor	143,673	127,815	40.7	33.4	-11.0
Coastal Areas	48,391	62,884	13.7	16.5	29.9
Eco-tourism Areas	4,527	4,589	1.3	1.2	1.4
Total	353,220	382,221	100.0	100.0	8.2

International Tourist Arrivals to Cambodia by Country of Residence in May 2015

(by all mean of transportations)

Regions Country of Residence	2014	2015			Total	Female	Share	Change
		Purpose of Visit					(%)	(%)
		Holiday	Business	Other			2015*	2015*/14
Grand Total	300,302	278,347	24,517	11,884	314,748	136,460	100.0	4.8
Asia and the Pacific	245,280	226,696	21,361	10,623	258,680	112,205	82.2	5.5
ASEAN (Southeast Asia)	158,280	137,671	8,133	9,646	155,450	69,832	49.4	-1.8
Brunei Darussalam	73	54	1	8	63	29	0.0	-13.7
Indonesia	3,614	2,159	1,004	32	3,195	931	1.0	-11.6
Lao PDR	31,452	23,008	17	77	23,102	15,015	7.3	-26.5
Malaysia	12,182	11,338	755	29	12,122	3,878	3.9	-0.5
Myanmar	589	570	51	24	645	282	0.2	9.5
Philippines	10,631	6,914	972	75	7,961	4,573	2.5	-25.1
Singapore	5,625	5,637	222	28	5,887	2,116	1.9	4.7
Thailand	19,027	18,667	1,543	825	21,035	8,912	6.7	10.6
Vietnam	75,087	69,324	3,568	8,548	81,440	34,096	25.9	8.5
Northeast Asia	75,470	78,554	12,209	636	91,399	37,771	29.0	21.1
China	35,919	39,925	7,525	234	47,684	20,783	15.1	32.8
Hong Kong (China)	553	722	12	7	741	358	0.2	34.0
Japan	13,282	9,567	1,827	206	11,600	4,236	3.7	-12.7
Korea (ROK)	18,120	21,394	1,419	172	22,985	9,375	7.3	26.8
Macau (China)		51	1	2	54	20	0.0	
Mongolia	21	40	2	3	45	23	0.0	114.3
Taiwan (China)	7,575	6,855	1,423	12	8,290	2,976	2.6	9.4
Southern Asia	2,723	2,663	386	92	3,141	932	1.0	15.4
Afghanistan	9	6	1	2	9	2	0.0	0.0
Bangladesh	122	122	37	10	169	25	0.1	38.5
Bhutan	16	5	1	3	9	7	0.0	-43.8
India	2,145	2,278	237	42	2,557	811	0.8	19.2
Nepal	134	115	21	17	153	43	0.0	14.2
Pakistan	107	60	35	5	100	11	0.0	-6.5
Sri Lanka	190	77	54	13	144	33	0.0	-24.2
Oceania	8,584	7,634	595	184	8,413	3,545	2.7	-2.0
Australia	7,204	6,268	508	173	6,949	2,941	2.2	-3.5
Fiji	14	10	6	1	17	5	0.0	21.4
New Zealand	1,366	1,356	81	10	1,447	599	0.5	5.9
Other Asia & the Pacific	223	174	38	65	277	125	0.1	24.2
Europe	35,633	31,028	2,055	627	33,710	14,292	10.7	-5.4
Northern Europe	11,071	10,452	669	158	11,279	4,682	3.6	1.9
Denmark	617	550	28	11	589	225	0.2	-4.5
Finland	263	306	35	12	353	146	0.1	34.2
Iceland	33	33	1	3	37	14	0.0	12.1
Ireland	647	618	37	6	661	273	0.2	2.2
Norway	399	300	17	4	321	117	0.1	-19.5
Sweden	663	579	35	21	635	237	0.2	-4.2
United Kingdom	8,449	8,066	516	101	8,683	3,670	2.8	2.8
Western Europe	15,015	13,401	956	323	14,680	5,977	4.7	-2.2
Austria	292	301	19	5	325	127	0.1	11.3
Belgium	872	679	50	36	765	265	0.2	-12.3
France	7,699	6,490	529	147	7,166	2,930	2.3	-6.9
Germany	3,824	3,523	189	82	3,794	1,553	1.2	-0.8
Luxembourg	23	28	1	3	32	12	0.0	39.1
Monaco	1	3	1	1	5	2	0.0	400.0
Netherlands	1,397	1,481	111	34	1,626	682	0.5	16.4
Switzerland	907	896	56	15	967	406	0.3	6.6
Central / Eastern Europe	6,478	3,815	199	70	4,084	2,097	1.3	-37.0
Bulgaria	73	38	2	1	41	17	0.0	-43.8
Czech Republic	147	190	3	5	198	85	0.1	34.7
Estonia	40	51	2	1	54	17	0.0	35.0
Hungary	104	157	10	3	170	86	0.1	63.5
Kazakhstan	122	80	23	10	113	52	0.0	-7.4
Kyrgyzstan		1	2	1	4	1	0.0	
Latvia		17	3	1	21	9	0.0	
Lithuania	61	45	2	3	50	24	0.0	-18.0
Poland	431	355	10	14	379	169	0.1	-12.1
Romania	110	75	10	2	87	38	0.0	-20.9
Russian Federation	4,993	2,384	111	18	2,513	1,354	0.8	-49.7
Slovakia	118	108	2	6	116	53	0.0	-1.7
Ukraine	244	248	14	4	266	140	0.1	9.0
Uzbekistan	35	66	5	1	72	52	0.0	105.7

Source: Statistics and Tourism Information Department, MOT

International Tourist Arrivals to Cambodia by Country of Residence in May 2015

(by all mean of transportations)

Regions Country of Residence	2014	2015			Total	Female	Share	Change
		Purpose of Visit					(%)	(%)
		Holiday	Business	Other			2015*	2015*/14
Grand Total	300,302	278,347	24,517	11,884	314,748	136,460	100.0	4.8
Southern Europe	2,886	3,224	179	39	3,442	1,428	1.1	19.3
Croatia	17	31	4	1	36	13	0.0	111.8
Greece	50	52	6	2	60	20	0.0	20.0
Italy	1,083	1,049	86	11	1,146	416	0.4	5.8
Malta		19	1	2	22	8	0.0	
Portugal	223	275	12	2	289	136	0.1	29.6
Serbia	25	23	2	1	26	11	0.0	4.0
Slovenia	27	30	2	3	35	14	0.0	29.6
Spain	1,233	1,343	35	9	1,387	650	0.4	12.5
Turkey	228	402	31	8	441	160	0.1	93.4
Other Europe	183	136	52	37	225	108	0.1	23.0
Americas	18,214	19,509	937	565	21,011	9,555	6.7	15.4
North America	16,098	17,111	875	520	18,506	8,342	5.9	15.0
Canada	3,579	3,491	202	30	3,723	1,729	1.2	4.0
Mexico	427	543	5	3	551	268	0.2	29.0
United States	12,092	13,077	668	487	14,232	6,345	4.5	17.7
Central America	23	33	4	4	41	15	0.0	
Costa Rica	23	18	1	2	21	6	0.0	-8.7
Honduras		8	2	1	11	6	0.0	
Jamaica		7	1	1	9	3	0.0	
South America	1,978	2,268	37	24	2,329	1,124	0.7	17.7
Argentina	324	472	3	2	477	218	0.2	47.2
Brazil	659	559	10	5	574	281	0.2	-12.9
Chile	369	392	1	2	395	185	0.1	7.0
Colombia	138	285	19	3	307	158	0.1	122.5
Ecuador	31	27	1	2	30	12	0.0	-3.2
Peru	60	79	1	3	83	43	0.0	38.3
Uruguay	397	427	1	5	433	212	0.1	9.1
Venezuela		27	1	2	30	15	0.0	
Other Americas	115	97	21	17	135	74	0.0	17.4
Africa	481	428	110	40	578	194	0.2	20.2
North Africa	7	72	4	4	80	34	0.0	
Morocco		39	2	1	42	23	0.0	
Sudan	7	16	1	1	18	5	0.0	
Tunisia		17	1	2	20	6	0.0	
Subsaharan Africa	446	333	101	28	462	145	0.1	3.6
Cameroon	14	10	1	3	14	4	0.0	0.0
Congo	4	2	1	2	5	1	0.0	25.0
Ghana	5	4	1	1	6	1	0.0	20.0
Kenya	13	17	2	1	20	10	0.0	53.8
Liberia	0	7	1	1	9	2	0.0	
Nigeria	45	43	58	1	102	8	0.0	126.7
South Africa	361	228	33	14	275	107	0.1	-23.8
Tanzania		2	1	2	5	2	0.0	
Uganda	4	11	1	1	13	2	0.0	225.0
Zimbabwe		9	2	2	13	8	0.0	
Other Africa	28	23	5	8	36	15	0.0	28.6
Middle East	694	686	54	29	769	214	0.2	10.8
Egypt	31	26	12	3	41	6	0.0	32.3
Iran	34	16	1	2	19	3	0.0	-44.1
Iraq	13	7	1	1	9	1	0.0	-30.8
Israel	445	396	22	1	419	168	0.1	-5.8
Jordan		24	4	2	30	4	0.0	
Kuwait	86	105	1	3	109	4	0.0	26.7
Oman	14	12	1	2	15	1	0.0	7.1
Palestine	2	6	1	1	8	3	0.0	300.0
Qatar	5	4	1	1	6	1	0.0	20.0
Saudi Arabia	22	21	1	3	25	1	0.0	13.6
Syria		23	2	1	26	3	0.0	
United Arab Emirates	11	11	1	3	15	4	0.0	36.4
Yemen	17	22	1	2	25	7	0.0	47.1
Other Middle East	14	13	5	4	22	8	0.0	57.1