



KINGDOM OF CAMBODIA  
NATION RELIGION KING



# TOURISM STATISTICS REPORT

# April 2015

**MINISTRY OF TOURISM**

Statistics and Tourism Information Department

No. A3, Street 169, Sangkat Veal Vong, Khan 7 Makara, Phnom Penh, Cambodia.

Fax: +855 23 885003

E-mail: [kong@mot.gov.kh](mailto:kong@mot.gov.kh)

Web site: [www.mot.gov.kh](http://www.mot.gov.kh)

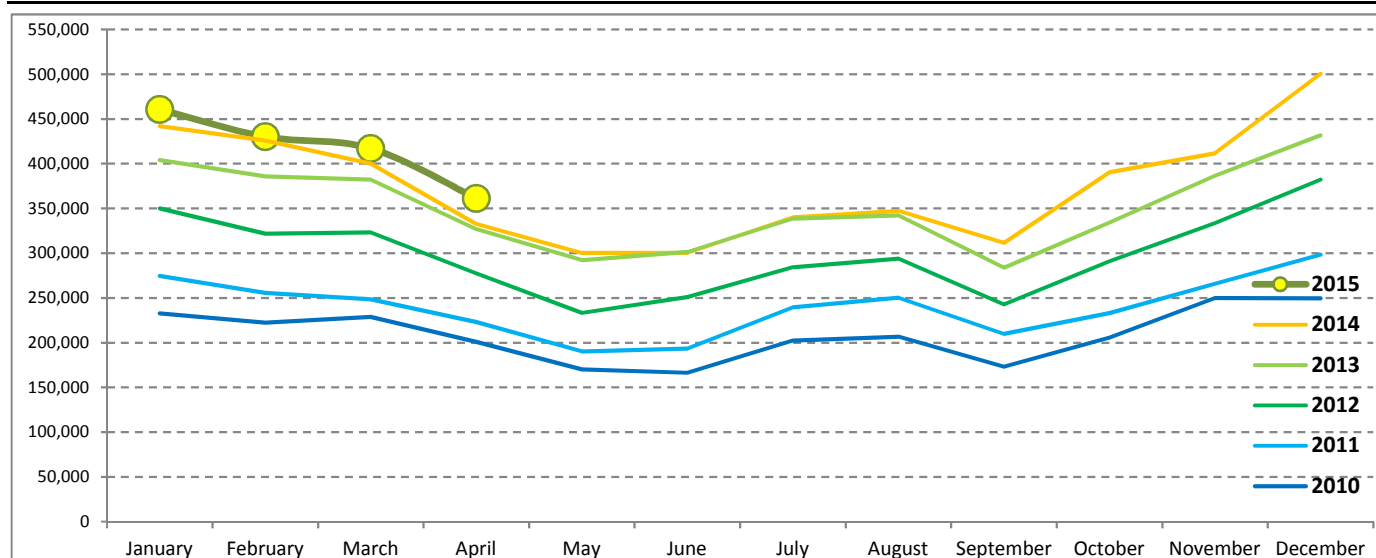
## Tourism Highlights

### International Tourist Arrivals, Average Length of Stay, Hotels Occupancy & Tourism Receipts 1993 - 2014

Years	Int'l Tourist Arrivals		Average Length	Hotels Occupancy	Tourism Receipts
	Number	Change (%)	of Stay (Days)	(%)	(Million US\$)
1993	118,183	-	N/A	N/A	N/A
1994	176,617	49.4	N/A	N/A	N/A
1995	219,680	24.4	8.00	37.00	100
1996	260,489	18.6	7.50	40.00	118
1997	218,843	-16.0	6.40	30.00	103
1998	286,524	30.9	5.20	40.00	166
1999	367,743	28.3	5.50	44.00	190
2000	466,365	26.8	5.50	45.00	228
2001	604,919	29.7	5.50	48.00	304
2002	786,524	30.0	5.80	50.00	379
2003	701,014	-10.9	5.50	50.00	347
2004	1,055,202	50.5	6.30	52.00	578
2005	1,421,615	34.7	6.30	52.00	832
2006	1,700,041	19.6	6.50	54.79	1,049
2007	2,015,128	18.5	6.50	54.79	1,400
2008	2,125,465	5.5	6.65	62.68	1,595
2009	2,161,577	1.7	6.45	63.57	1,561
2010	2,508,289	16.0	6.45	65.74	1,786
2011	2,881,862	14.9	6.50	66.15	1,912
2012	3,584,307	24.4	6.30	68.49	2,210
2013	4,210,165	17.5	6.75	69.53	2,547
2014	4,502,775	7.0	6.50	67.55	2,736

### International Tourist Arrivals to Cambodia

Months	2010	2011	2012	2013	2014	2015	Change (%)				
							11/10	12/11	13/12	14/13	15*/14
<b>Q1</b>	<b>683,692</b>	<b>778,467</b>	<b>995,210</b>	<b>1,172,072</b>	<b>1,267,922</b>	<b>1,307,836</b>	<b>13.9</b>	<b>27.8</b>	<b>17.8</b>	<b>8.2</b>	<b>3.1</b>
January	232,590	274,471	350,257	404,106	442,045	460,577	18.0	27.6	15.4	9.4	4.2
February	222,354	255,499	321,870	385,760	425,801	430,207	14.9	26.0	19.8	10.4	1.0
March	228,748	248,497	323,083	382,206	400,076	417,052	8.6	30.0	18.3	4.7	4.2
<b>Q2</b>	<b>537,464</b>	<b>606,562</b>	<b>761,442</b>	<b>920,527</b>	<b>933,446</b>	<b>361,139</b>	<b>12.9</b>	<b>25.5</b>	<b>20.9</b>	<b>1.4</b>	
April	200,965	223,032	277,304	327,000	332,690	361,139	11.0	24.3	17.9	1.7	8.6
May	170,164	190,258	233,220	292,115	300,302		11.8	22.6	25.3	2.8	
June	166,335	193,272	250,918	301,412	300,454		16.2	29.8	20.1	-0.3	
<b>Q3</b>	<b>582,024</b>	<b>699,760</b>	<b>820,888</b>	<b>964,612</b>	<b>998,690</b>	<b>0</b>	<b>20.2</b>	<b>17.3</b>	<b>17.5</b>	<b>3.5</b>	
July	202,349	239,527	284,282	338,761	340,091		18.4	18.7	19.2	0.4	
August	206,563	250,429	293,859	342,064	347,211		21.2	17.3	16.4	1.5	
September	173,112	209,804	242,747	283,787	311,388		21.2	15.7	16.9	9.7	
<b>Q4</b>	<b>705,109</b>	<b>797,073</b>	<b>1,006,767</b>	<b>1,152,954</b>	<b>1,302,717</b>	<b>0</b>	<b>13.0</b>	<b>26.3</b>	<b>14.5</b>	<b>13.0</b>	
October	205,515	233,190	290,959	334,410	390,637		13.5	24.8	14.9	16.8	
November	249,892	265,539	333,482	386,737	411,501		6.3	25.6	16.0	6.4	
December	249,702	298,344	382,326	431,807	500,579		19.5	28.1	12.9	15.9	
<b>Total</b>	<b>2,508,289</b>	<b>2,881,862</b>	<b>3,584,307</b>	<b>4,210,165</b>	<b>4,502,775</b>	<b>1,668,975</b>	<b>14.9</b>	<b>24.4</b>	<b>17.5</b>	<b>7.0</b>	<b>4.3</b>



Source: Statistics and Tourism Information Department, MOT

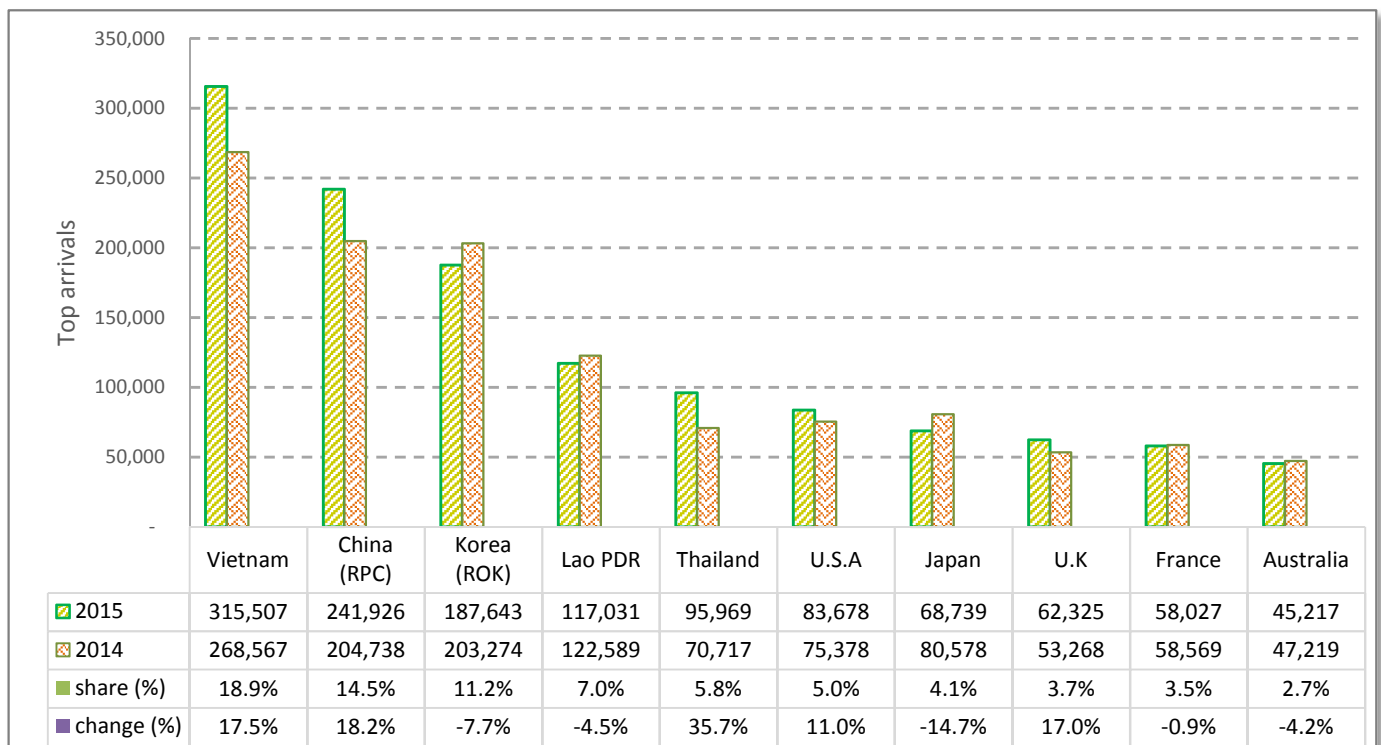
# CAMBODIA: TOURISM STATISTICS REPORT IN THE FIRST FOUR MONTHS 2015

## I. INBOUND TOURISM

### 1. International tourist arrivals in January - April 2015

	Inbound tourism		share (%)		change (%)
	2014	2015	2014	2015	2015*/14
<b>Air</b>	<b>860,289</b>	<b>914,942</b>	<b>53.7</b>	<b>54.8</b>	<b>6.4</b>
Phnom Penh Int'l Airport (PNH)	312,506	352,365	19.5	21.1	12.8
Siem Reap Int'l Airport (REP)	547,783	562,577	34.2	33.7	2.7
<b>Land and Water ways</b>	<b>740,323</b>	<b>754,033</b>	<b>46.3</b>	<b>45.2</b>	<b>1.9</b>
Land	702,327	696,041	43.9	41.7	-0.9
Waterway	37,996	57,992	2.4	3.5	52.6
<b>Total</b>	<b>1,600,612</b>	<b>1,668,975</b>	<b>100.0</b>	<b>100.0</b>	<b>4.3</b>

### 2. Top ten markets arrivals in January - April 2015



## II. OUTBOUND TOURISM

### Outbound tourism in January - April 2015

	Outbound tourism		change (%)
	2014	2015	2015*/14
Cambodian Outbound Tourists	299,766	353,356	17.9
International Tourists Departure	1,590,128	1,604,974	0.9

## III. INTERNAL TOURISM

### Foreign visitor arrivals to the regions in January - April 2015

	Arrivals		share (%)		change (%)
	2014	2015	2014	2015	2015*/14
Phnom Penh & Surrounding	630,773	805,794	34.2	41.2	27.7
Siem Reap Angkor	969,839	863,181	52.6	44.1	-11.0
Coastal Areas	219,126	263,169	11.9	13.4	20.1
Eco-tourism Areas	25,082	25,343	1.4	1.3	1.0
<b>Total</b>	<b>1,844,820</b>	<b>1,957,487</b>	<b>100.0</b>	<b>100.0</b>	<b>6.1</b>

## International Tourist Arrivals to Cambodia by Country of Residence in January - April 2015

(by all mean of transportations)

Regions Country of Residence	2014	2015			Total	Female	Share	Change
		Purpose of Visit					(%)	(%)
		Holiday	Business	Other			2015*	2015*/14
<b>Grand Total</b>	<b>1,600,612</b>	<b>1,519,057</b>	<b>94,354</b>	<b>55,564</b>	<b>1,668,975</b>	<b>746,107</b>	<b>100.0</b>	<b>4.3</b>
<b>Asia and the Pacific</b>	<b>1,164,577</b>	<b>1,114,097</b>	<b>79,351</b>	<b>46,946</b>	<b>1,240,394</b>	<b>556,161</b>	<b>74.3</b>	<b>6.5</b>
<b>ASEAN (Southeast Asia)</b>	<b>574,066</b>	<b>558,946</b>	<b>29,093</b>	<b>42,375</b>	<b>630,414</b>	<b>288,218</b>	<b>37.8</b>	<b>9.8</b>
Brunei Darussalam	291	215	12	37	264	117	0.0	-9.3
Indonesia	10,596	8,703	4,302	782	13,787	3,590	0.8	30.1
Lao PDR	122,589	112,306	51	4,674	117,031	67,267	7.0	-4.5
Malaysia	44,183	40,517	2,835	148	43,500	13,903	2.6	-1.5
Myanmar	1,977	2,801	183	220	3,204	1,433	0.2	62.1
Philippines	37,771	20,106	3,378	443	23,927	13,750	1.4	-36.7
Singapore	17,375	16,250	869	106	17,225	5,210	1.0	-0.9
Thailand	70,717	85,907	5,191	4,871	95,969	39,794	5.8	35.7
Vietnam	268,567	272,141	12,272	31,094	315,507	143,154	18.9	17.5
<b>Northeast Asia</b>	<b>524,771</b>	<b>493,213</b>	<b>46,452</b>	<b>2,775</b>	<b>542,440</b>	<b>239,659</b>	<b>32.5</b>	<b>3.4</b>
China	204,738	211,404	29,392	1,130	241,926	111,403	14.5	18.2
Hong Kong (China)	2,184	4,500	53	8	4,561	2,130	0.3	108.8
Japan	80,578	61,214	6,719	806	68,739	27,300	4.1	-14.7
Korea (ROK)	203,274	181,916	4,957	770	187,643	82,014	11.2	-7.7
Macau (China)		154	1	2	157	73	0.0	
Mongolia	134	164	6	7	177	100	0.0	32.1
Taiwan (China)	33,863	33,861	5,324	52	39,237	16,639	2.4	15.9
<b>Southern Asia</b>	<b>10,710</b>	<b>11,029</b>	<b>1,538</b>	<b>807</b>	<b>13,374</b>	<b>3,741</b>	<b>0.8</b>	<b>24.9</b>
Afghanistan	114	18	2	7	27	6	0.0	-76.3
Bangladesh	455	475	118	47	640	107	0.0	40.7
Bhutan	27	61	1	7	69	39	0.0	155.6
India	8,645	9,323	1,002	538	10,863	3,214	0.7	25.7
Nepal	523	543	100	113	756	180	0.0	44.6
Pakistan	411	274	108	51	433	74	0.0	5.4
Srilanka	535	335	207	44	586	121	0.0	9.5
<b>Oceania</b>	<b>54,068</b>	<b>50,068</b>	<b>2,142</b>	<b>739</b>	<b>52,949</b>	<b>24,001</b>	<b>3.2</b>	<b>-2.1</b>
Australia	47,219	42,735	1,842	640	45,217	20,494	2.7	-4.2
Fiji	57	28	13	8	49	15	0.0	-14.0
New Zealand	6,792	7,305	287	91	7,683	3,492	0.5	13.1
Other Asia & the Pacific	962	841	126	250	1,217	542	0.1	26.5
<b>Europe</b>	<b>316,301</b>	<b>278,807</b>	<b>10,419</b>	<b>4,870</b>	<b>294,096</b>	<b>128,778</b>	<b>17.6</b>	<b>-7.0</b>
<b>Northern Europe</b>	<b>80,507</b>	<b>82,898</b>	<b>4,755</b>	<b>1,129</b>	<b>88,782</b>	<b>36,781</b>	<b>5.3</b>	<b>10.3</b>
Denmark	6,190	5,503	125	72	5,700	2,529	0.3	-7.9
Finland	3,499	3,370	89	59	3,518	1,364	0.2	0.5
Iceland	319	326	4	9	339	140	0.0	6.3
Ireland	3,449	3,656	128	59	3,843	1,600	0.2	11.4
Norway	4,764	4,515	69	40	4,624	2,135	0.3	-2.9
Sweden	9,018	8,173	167	93	8,433	3,513	0.5	-6.5
United Kingdom	53,268	57,355	4,173	797	62,325	25,500	3.7	17.0
<b>Western Europe</b>	<b>127,343</b>	<b>123,462</b>	<b>3,908</b>	<b>1,922</b>	<b>129,292</b>	<b>56,302</b>	<b>7.7</b>	<b>1.5</b>
Austria	4,371	4,564	83	54	4,701	1,941	0.3	7.5
Belgium	5,988	5,936	184	126	6,246	2,606	0.4	4.3
France	58,569	54,776	2,316	935	58,027	25,971	3.5	-0.9
Germany	38,692	39,078	687	497	40,262	17,203	2.4	4.1
Luxembourg	209	286	1	4	291	130	0.0	39.2
Monaco	32	24	1	4	29	14	0.0	-9.4
Netherlands	10,600	9,538	398	209	10,145	4,289	0.6	-4.3
Switzerland	8,882	9,260	238	93	9,591	4,148	0.6	8.0
<b>Central / Eastern Europe</b>	<b>83,734</b>	<b>47,418</b>	<b>905</b>	<b>957</b>	<b>49,280</b>	<b>24,507</b>	<b>3.0</b>	<b>-41.1</b>
Bulgaria	577	750	10	98	858	388	0.1	48.7
Czech Republic	2,807	2,883	30	46	2,959	1,227	0.2	5.4
Estonia	868	982	14	13	1,009	438	0.1	16.2
Hungary	1,699	2,041	44	71	2,156	941	0.1	26.9
Kazakhstan	1,542	1,193	63	8	1,264	700	0.1	-18.0
Kyrgyzstan		69	5	4	78	36	0.0	
Latvia		376	10	22	408	188	0.0	
Lithuania	858	870	6	32	908	456	0.1	5.8
Poland	5,915	6,384	40	153	6,577	3,280	0.4	11.2
Romania	824	1,023	30	133	1,186	573	0.1	43.9
Russian Federation	64,006	27,053	531	137	27,721	14,309	1.7	-56.7
Slovakia	1,219	1,137	19	31	1,187	504	0.1	-2.6
Ukraine	3,212	2,442	84	202	2,728	1,319	0.2	-15.1
Uzbekistan	207	215	19	7	241	148	0.0	16.4

Source: Statistics and Tourism Information Department, MOT

## International Tourist Arrivals to Cambodia by Country of Residence in January - April 2015

(by all mean of transportations)

Regions Country of Residence	2014	2015			Total	Female	Share	Change
		Purpose of Visit					(%)	(%)
		Holiday	Business	Other			2015*	2015*/14
<b>Grand Total</b>	<b>1,600,612</b>	<b>1,519,057</b>	<b>94,354</b>	<b>55,564</b>	<b>1,668,975</b>	<b>746,107</b>	<b>100.0</b>	<b>4.3</b>
<b>Southern Europe</b>	<b>23,916</b>	<b>24,292</b>	<b>745</b>	<b>651</b>	<b>25,688</b>	<b>10,716</b>	<b>1.5</b>	<b>7.4</b>
Croatia	398	480	12	117	609	240	0.0	53.0
Greece	549	679	26	23	728	282	0.0	32.6
Italy	11,935	11,121	275	119	11,515	4,738	0.7	-3.5
Malta		181	2	8	191	71	0.0	
Portugal	1,336	1,714	62	70	1,846	844	0.1	38.2
Serbia	298	352	6	83	441	193	0.0	48.0
Slovenia	517	501	10	22	533	232	0.0	3.1
Spain	6,829	7,087	173	102	7,362	3,283	0.4	7.8
Turkey	2,054	2,177	179	107	2,463	833	0.1	19.9
Other Europe	801	737	106	211	1,054	472	0.1	31.6
<b>Americas</b>	<b>112,512</b>	<b>118,477</b>	<b>4,017</b>	<b>3,276</b>	<b>125,770</b>	<b>57,836</b>	<b>7.5</b>	<b>11.8</b>
<b>North America</b>	<b>100,161</b>	<b>104,736</b>	<b>3,780</b>	<b>2,762</b>	<b>111,278</b>	<b>50,743</b>	<b>6.7</b>	<b>11.1</b>
Canada	23,225	24,470	811	275	25,556	11,628	1.5	10.0
Mexico	1,558	2,001	17	26	2,044	1,043	0.1	31.2
United States	75,378	78,265	2,952	2,461	83,678	38,072	5.0	11.0
<b>Central America</b>	<b>113</b>	<b>192</b>	<b>9</b>	<b>64</b>	<b>265</b>	<b>128</b>	<b>0.0</b>	
Costa Rica	113	166	4	14	184	98	0.0	62.8
Honduras		11	3	32	46	19	0.0	
Jamaica		15	2	18	35	11	0.0	
<b>South America</b>	<b>11,685</b>	<b>13,072</b>	<b>132</b>	<b>198</b>	<b>13,402</b>	<b>6,627</b>	<b>0.8</b>	<b>14.7</b>
Argentina	3,510	4,133	20	18	4,171	2,044	0.2	18.8
Brazil	4,334	4,812	50	74	4,936	2,373	0.3	13.9
Chile	2,643	2,332	16	30	2,378	1,215	0.1	-10.0
Colombia	643	921	14	15	950	491	0.1	47.7
Ecuador	114	233	11	8	252	136	0.0	121.1
Peru	274	267	9	22	298	161	0.0	8.8
Uruguay	167	264	6	12	282	142	0.0	68.9
Venezuela		110	6	19	135	65	0.0	
Other Americas	553	477	96	252	825	338	0.0	49.2
<b>Africa</b>	<b>1,844</b>	<b>2,258</b>	<b>388</b>	<b>331</b>	<b>2,977</b>	<b>1,183</b>	<b>0.2</b>	<b>61.4</b>
<b>North Africa</b>	<b>27</b>	<b>227</b>	<b>22</b>	<b>29</b>	<b>278</b>	<b>110</b>	<b>0.0</b>	
Morocco		147	16	9	172	68	0.0	
Sudan	27	24	2	14	40	17	0.0	48.1
Tunisia		56	4	6	66	25	0.0	
<b>Subsaharan Africa</b>	<b>1,688</b>	<b>1,932</b>	<b>334</b>	<b>244</b>	<b>2,510</b>	<b>1,008</b>	<b>0.2</b>	<b>48.7</b>
Cameroon	44	59	5	14	78	12	0.0	77.3
Congo	19	13	1	10	24	5	0.0	26.3
Ghana	55	18	4	4	26	4	0.0	-52.7
Kenya	74	102	6	6	114	55	0.0	54.1
Liberia	12	6	1	3	10	1	0.0	-16.7
Nigeria	189	147	189	17	353	40	0.0	86.8
South Africa	1,276	1,528	121	174	1,823	863	0.1	42.9
Tanzania		18	1	5	24	6	0.0	
Uganda	19	13	2	3	18	6	0.0	-5.3
Zimbabwe		28	4	8	40	16	0.0	
Other Africa	129	99	32	58	189	65	0.0	46.5
<b>Middle East</b>	<b>5,378</b>	<b>5,418</b>	<b>179</b>	<b>141</b>	<b>5,738</b>	<b>2,149</b>	<b>0.3</b>	<b>6.7</b>
Egypt	99	189	24	6	219	58	0.0	121.2
Iran	215	188	15	3	206	62	0.0	-4.2
Iraq	22	30	2	6	38	6	0.0	72.7
Israel	4,383	4,200	95	16	4,311	1,863	0.3	-1.6
Jordan		102	10	4	116	29	0.0	
Kuwait	333	259	1	26	286	20	0.0	-14.1
Oman	57	83	1	8	92	16	0.0	61.4
Palestine	29	10	4	5	19	2	0.0	-34.5
Qatar	12	50	1	12	63	23	0.0	425.0
Saudi Arabia	44	114	5	12	131	11	0.0	197.7
Syria		49	3	4	56	14	0.0	
United Arab Emirates	19	26	1	3	30	1	0.0	57.9
Yemen	75	38	2	6	46	7	0.0	-38.7
Other Middle East	90	80	15	30	125	37	0.0	38.9

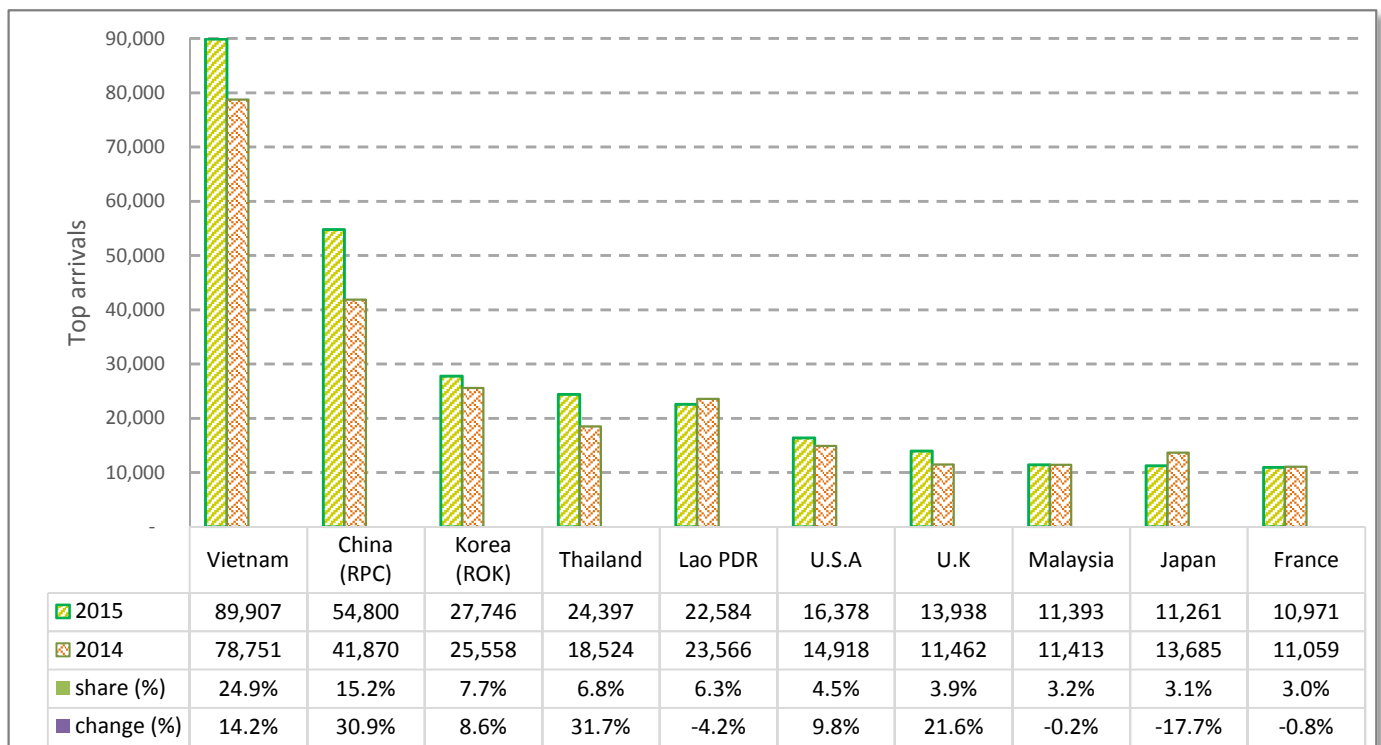
# CAMBODIA: TOURISM STATISTICS REPORT IN APRIL 2015

## I. INBOUND TOURISM

### 1. International tourist arrivals in April 2015

	Inbound tourism		share (%)		change (%)
	2014	2015	2014	2015	2015*/14
<b>Air</b>	<b>161,320</b>	<b>181,474</b>	<b>48.5</b>	<b>50.3</b>	<b>12.5</b>
Phnom Penh Int'l Airport (PNH)	67,435	79,805	20.3	22.1	18.3
Siem Reap Int'l Airport (REP)	93,885	101,669	28.2	28.2	8.3
<b>Land and Water ways</b>	<b>171,370</b>	<b>179,665</b>	<b>51.5</b>	<b>49.7</b>	<b>4.8</b>
Land	165,739	167,098	49.8	46.3	0.8
Waterway	5,631	12,567	1.7	3.5	123.2
<b>Total</b>	<b>332,690</b>	<b>361,139</b>	<b>100.0</b>	<b>100.0</b>	<b>8.6</b>

### 2. Top ten markets arrivals in April 2015



## II. OUTBOUND TOURISM

### Outbound tourism in April 2015

	Outbound tourism		change (%)
	2014	2015	2015*/14
Cambodian Outbound Tourists	90,794	106,444	17.2
International Tourists Departure	319,318	337,825	5.8

## III. INTERNAL TOURISM

### Foreign visitor arrivals to the regions in April 2015

	Arrivals		share (%)		change (%)
	2014	2015	2014	2015	2015*/14
Phnom Penh & Surrounding	141,588	190,590	36.8	44.4	34.6
Siem Reap Angkor	191,102	174,187	49.6	40.6	-8.9
Coastal Areas	46,835	58,334	12.2	13.6	24.6
Eco-tourism Areas	5,413	5,844	1.4	1.4	8.0
<b>Total</b>	<b>384,938</b>	<b>428,955</b>	<b>100.0</b>	<b>100.0</b>	<b>11.4</b>

## International Tourist Arrivals to Cambodia by Country of Residence in April 2015

(by all mean of transportations)

Regions Country of Residence	2014	2015			Total	Female	Share	Change
		Purpose of Visit					(%)	(%)
		Holiday	Business	Other			2015*	2015*/14
<b>Grand Total</b>	<b>332,690</b>	<b>328,866</b>	<b>28,768</b>	<b>3,505</b>	<b>361,139</b>	<b>172,411</b>	<b>100.0</b>	<b>8.6</b>
<b>Asia and the Pacific</b>	<b>254,509</b>	<b>259,451</b>	<b>23,033</b>	<b>2,071</b>	<b>284,555</b>	<b>138,999</b>	<b>78.8</b>	<b>11.8</b>
<b>ASEAN (Southeast Asia)</b>	<b>149,830</b>	<b>154,560</b>	<b>8,150</b>	<b>1,108</b>	<b>163,818</b>	<b>85,487</b>	<b>45.4</b>	<b>9.3</b>
Brunei Darussalam	62	67	4	19	90	39	0.0	45.2
Indonesia	2,642	2,017	1,071	38	3,126	864	0.9	18.3
Lao PDR	23,566	22,459	18	107	22,584	11,982	6.3	-4.2
Malaysia	11,413	10,527	834	32	11,393	3,751	3.2	-0.2
Myanmar	799	1,046	71	41	1,158	570	0.3	44.9
Philippines	9,893	6,048	1,117	54	7,219	4,174	2.0	-27.0
Singapore	4,180	3,687	234	23	3,944	1,179	1.1	-5.6
Thailand	18,524	22,720	1,457	220	24,397	9,719	6.8	31.7
Vietnam	78,751	85,989	3,344	574	89,907	53,209	24.9	14.2
<b>Northeast Asia</b>	<b>89,656</b>	<b>90,464</b>	<b>13,735</b>	<b>685</b>	<b>104,884</b>	<b>46,920</b>	<b>29.0</b>	<b>17.0</b>
China	41,870	45,918	8,675	207	54,800	25,687	15.2	30.9
Hong Kong (China)	465	779	18	2	799	371	0.2	71.8
Japan	13,685	9,263	1,737	261	11,261	4,427	3.1	-17.7
Korea (ROK)	25,558	25,800	1,750	196	27,746	11,876	7.7	8.6
Macau (China)		18	1	2	21	8	0.0	
Mongolia	22	25	3	1	29	16	0.0	31.8
Taiwan (China)	8,056	8,661	1,551	16	10,228	4,535	2.8	27.0
<b>Southern Asia</b>	<b>2,596</b>	<b>2,473</b>	<b>492</b>	<b>78</b>	<b>3,043</b>	<b>851</b>	<b>0.8</b>	<b>17.2</b>
Afghanistan	16	5	1	3	9	3	0.0	-43.8
Bangladesh	121	96	28	14	138	26	0.0	14.0
Bhutan	4	10	1	2	13	8	0.0	225.0
India	2,013	2,094	329	24	2,447	714	0.7	21.6
Nepal	187	104	32	19	155	46	0.0	-17.1
Pakistan	123	61	33	9	103	12	0.0	-16.3
Sri Lanka	132	103	68	7	178	42	0.0	34.8
<b>Oceania</b>	<b>12,187</b>	<b>11,717</b>	<b>611</b>	<b>174</b>	<b>12,502</b>	<b>5,614</b>	<b>3.5</b>	<b>2.6</b>
Australia	10,562	10,008	518	149	10,675	4,788	3.0	1.1
Fiji	12	8	1	2	11	1	0.0	-8.3
New Zealand	1,613	1,701	92	23	1,816	825	0.5	12.6
Other Asia & the Pacific	240	237	45	26	308	127	0.1	28.3
<b>Europe</b>	<b>55,060</b>	<b>45,835</b>	<b>4,389</b>	<b>707</b>	<b>50,931</b>	<b>21,609</b>	<b>14.1</b>	<b>-7.5</b>
<b>Northern Europe</b>	<b>15,699</b>	<b>14,723</b>	<b>2,836</b>	<b>179</b>	<b>17,738</b>	<b>6,673</b>	<b>4.9</b>	<b>13.0</b>
Denmark	906	695	32	13	740	329	0.2	-18.3
Finland	451	364	23	10	397	146	0.1	-12.0
Iceland	39	50	1	2	53	20	0.0	35.9
Ireland	741	812	28	9	849	354	0.2	14.6
Norway	934	592	20	11	623	288	0.2	-33.3
Sweden	1,166	1,063	48	27	1,138	475	0.3	-2.4
United Kingdom	11,462	11,147	2,684	107	13,938	5,061	3.9	21.6
<b>Western Europe</b>	<b>23,143</b>	<b>20,892</b>	<b>1,110</b>	<b>412</b>	<b>22,414</b>	<b>9,832</b>	<b>6.2</b>	<b>-3.1</b>
Austria	629	498	19	1	518	228	0.1	-17.6
Belgium	1,333	1,210	52	32	1,294	562	0.4	-2.9
France	11,059	10,045	663	263	10,971	4,905	3.0	-0.8
Germany	6,650	5,769	164	59	5,992	2,620	1.7	-9.9
Luxembourg	39	67	1	1	69	37	0.0	76.9
Monaco	3	4	1	1	6	1	0.0	100.0
Netherlands	1,849	1,628	131	36	1,795	758	0.5	-2.9
Switzerland	1,581	1,671	79	19	1,769	721	0.5	11.9
<b>Central / Eastern Europe</b>	<b>10,906</b>	<b>5,840</b>	<b>244</b>	<b>44</b>	<b>6,128</b>	<b>3,143</b>	<b>1.7</b>	<b>-43.8</b>
Bulgaria	91	143	4	3	150	74	0.0	64.8
Czech Republic	379	354	13	6	373	149	0.1	-1.6
Estonia	68	65	3	2	70	22	0.0	2.9
Hungary	257	183	18	1	202	94	0.1	-21.4
Kazakhstan	169	114	18	2	134	71	0.0	-20.7
Kyrgyzstan		10	1	2	13	2	0.0	
Latvia		63	5	4	72	41	0.0	
Lithuania	83	90	3	1	94	43	0.0	13.3
Poland	566	635	11	2	648	335	0.2	14.5
Romania	154	149	8	5	162	80	0.0	5.2
Russian Federation	8,520	3,507	139	9	3,655	1,931	1.0	-57.1
Slovakia	240	208	3	1	212	105	0.1	-11.7
Ukraine	342	266	11	2	279	161	0.1	-18.4
Uzbekistan	37	53	7	4	64	35	0.0	73.0

Source: Statistics and Tourism Information Department, MOT

## International Tourist Arrivals to Cambodia by Country of Residence in April 2015

(by all mean of transportations)

Regions Country of Residence	2014	2015			Total	Female	Share	Change
		Purpose of Visit					(%)	(%)
		Holiday	Business	Other			2015*	2015*/14
<b>Grand Total</b>	<b>332,690</b>	<b>328,866</b>	<b>28,768</b>	<b>3,505</b>	<b>361,139</b>	<b>172,411</b>	<b>100.0</b>	<b>8.6</b>
<b>Southern Europe</b>	<b>5,098</b>	<b>4,173</b>	<b>168</b>	<b>46</b>	<b>4,387</b>	<b>1,844</b>	<b>1.2</b>	<b>-13.9</b>
Croatia	54	51	1	1	53	20	0.0	-1.9
Greece	67	123	4	3	130	48	0.0	94.0
Italy	2,066	1,523	77	12	1,612	651	0.4	-22.0
Malta		42	1	1	44	19	0.0	
Portugal	378	397	16	1	414	182	0.1	9.5
Serbia	42	35	1	2	38	25	0.0	-9.5
Slovenia	58	51	1	3	55	20	0.0	-5.2
Spain	1,941	1,583	40	11	1,634	719	0.5	-15.8
Turkey	492	368	27	12	407	160	0.1	-17.3
Other Europe	214	207	31	26	264	117	0.1	23.4
<b>Americas</b>	<b>21,741</b>	<b>22,221</b>	<b>1,168</b>	<b>620</b>	<b>24,009</b>	<b>11,193</b>	<b>6.6</b>	<b>10.4</b>
<b>North America</b>	<b>19,322</b>	<b>19,690</b>	<b>1,088</b>	<b>519</b>	<b>21,297</b>	<b>9,882</b>	<b>5.9</b>	<b>10.2</b>
Canada	3,903	4,084	205	40	4,329	2,017	1.2	10.9
Mexico	501	583	4	3	590	285	0.2	17.8
United States	14,918	15,023	879	476	16,378	7,580	4.5	9.8
<b>Central America</b>	<b>21</b>	<b>34</b>	<b>5</b>	<b>6</b>	<b>45</b>	<b>22</b>	<b>0.0</b>	
Costa Rica	21	26	2	3	31	13	0.0	47.6
Honduras		3	2	1	6	6	0.0	
Jamaica		5	1	2	8	3	0.0	
<b>South America</b>	<b>2,253</b>	<b>2,372</b>	<b>38</b>	<b>27</b>	<b>2,437</b>	<b>1,193</b>	<b>0.7</b>	<b>8.2</b>
Argentina	572	786	4	2	792	363	0.2	38.5
Brazil	854	747	17	5	769	373	0.2	-10.0
Chile	507	429	4	5	438	215	0.1	-13.6
Colombia	150	201	5	1	207	117	0.1	38.0
Ecuador	26	41	3	2	46	26	0.0	76.9
Peru	78	51	3	1	55	31	0.0	-29.5
Uruguay	66	84	1	3	88	46	0.0	33.3
Venezuela		33	1	8	42	22	0.0	
Other Americas	145	125	37	68	230	96	0.1	58.6
<b>Africa</b>	<b>428</b>	<b>530</b>	<b>111</b>	<b>55</b>	<b>696</b>	<b>269</b>	<b>0.2</b>	<b>62.6</b>
<b>North Africa</b>	<b>6</b>	<b>34</b>	<b>12</b>	<b>3</b>	<b>49</b>	<b>19</b>	<b>0.0</b>	
Morocco		23	10	1	34	13	0.0	
Sudan	6	3	1	1	5	2	0.0	
Tunisia		8	1	1	10	4	0.0	
<b>Subsaharan Africa</b>	<b>391</b>	<b>472</b>	<b>86</b>	<b>31</b>	<b>589</b>	<b>231</b>	<b>0.2</b>	<b>50.6</b>
Cameroon	10	12	2	9	23	2	0.0	130.0
Congo	7	3	1	3	7	3	0.0	0.0
Ghana	5	2	1	1	4	1	0.0	-20.0
Kenya	14	17	2	1	20	6	0.0	42.9
Liberia	2	1	1	1	3	1	0.0	50.0
Nigeria	61	31	49	3	83	16	0.0	36.1
South Africa	285	389	27	6	422	196	0.1	48.1
Tanzania		5	1	2	8	1	0.0	
Uganda	7	3	1	2	6	1	0.0	-14.3
Zimbabwe		9	1	3	13	4	0.0	
Other Africa	31	24	13	21	58	19	0.0	87.1
<b>Middle East</b>	<b>952</b>	<b>829</b>	<b>67</b>	<b>52</b>	<b>948</b>	<b>341</b>	<b>0.3</b>	<b>-0.4</b>
Egypt	25	46	15	1	62	20	0.0	148.0
Iran	36	15	2	1	18	6	0.0	-50.0
Iraq	6	10	1	3	14	3	0.0	133.3
Israel	717	601	26	6	633	279	0.2	-11.7
Jordan		16	6	2	24	4	0.0	
Kuwait	88	37	1	9	47	4	0.0	-46.6
Oman	6	10	1	3	14	2	0.0	133.3
Palestine	9	4	1	2	7	1	0.0	-22.2
Qatar	2	4	1	1	6	1	0.0	200.0
Saudi Arabia	7	37	1	4	42	1	0.0	500.0
Syria		15	2	3	20	6	0.0	
United Arab Emirates	4	5	1	2	8	1	0.0	100.0
Yemen	28	8	2	4	14	1	0.0	-50.0
Other Middle East	24	21	7	11	39	12	0.0	62.5