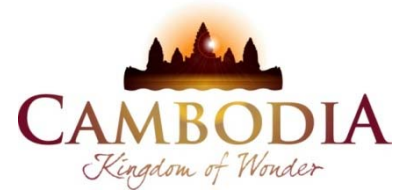




KINGDOM OF CAMBODIA
NATION RELIGION KING



TOURISM STATISTICS REPORT

February 2015

MINISTRY OF TOURISM

Statistics and Tourism Information Department

No. A3, Street 169, Sangkat Veal Vong, Khan 7 Makara, Phnom Penh, Cambodia.

Fax: +855 23 885003

E-mail: kong@mot.gov.kh

Web site: www.mot.gov.kh

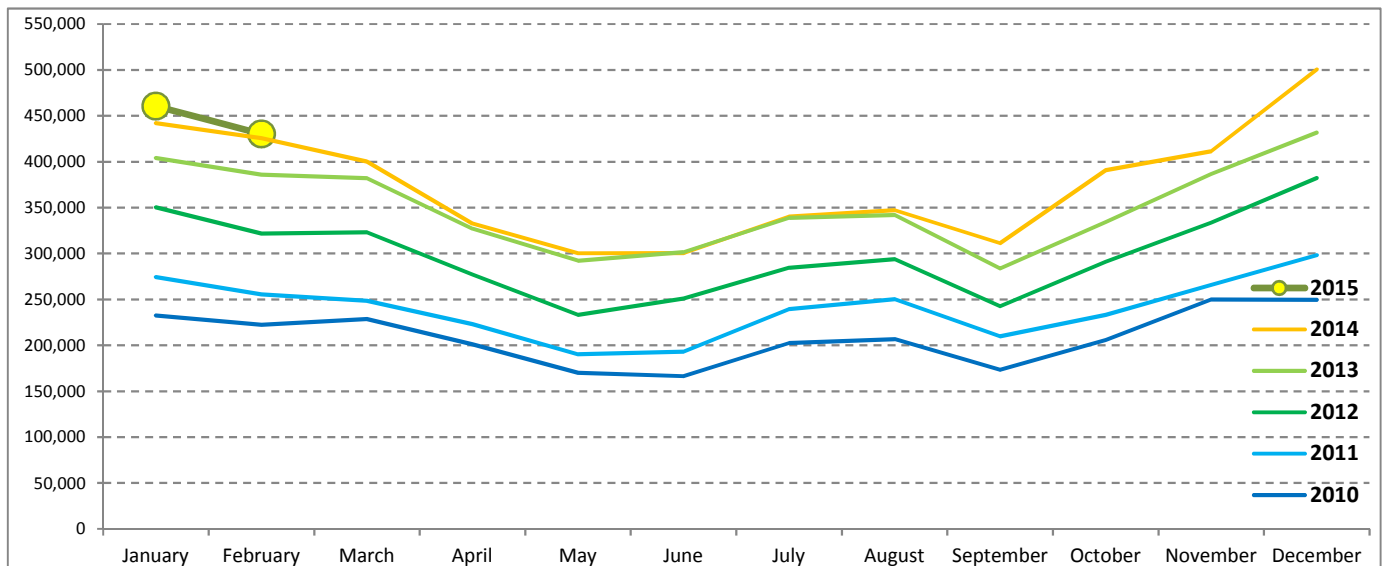
Tourism Highlights

International Tourist Arrivals, Average Length of Stay, Hotels Occupancy & Tourism Receipts 1993 - 2014

Years	Int'l Tourist Arrivals		Average Length	Hotels Occupancy	Tourism Receipts
	Number	Change (%)	of Stay (Days)	(%)	(Million US\$)
1993	118,183	-	N/A	N/A	N/A
1994	176,617	49.4	N/A	N/A	N/A
1995	219,680	24.4	8.00	37.00	100
1996	260,489	18.6	7.50	40.00	118
1997	218,843	-16.0	6.40	30.00	103
1998	286,524	30.9	5.20	40.00	166
1999	367,743	28.3	5.50	44.00	190
2000	466,365	26.8	5.50	45.00	228
2001	604,919	29.7	5.50	48.00	304
2002	786,524	30.0	5.80	50.00	379
2003	701,014	-10.9	5.50	50.00	347
2004	1,055,202	50.5	6.30	52.00	578
2005	1,421,615	34.7	6.30	52.00	832
2006	1,700,041	19.6	6.50	54.79	1,049
2007	2,015,128	18.5	6.50	54.79	1,400
2008	2,125,465	5.5	6.65	62.68	1,595
2009	2,161,577	1.7	6.45	63.57	1,561
2010	2,508,289	16.0	6.45	65.74	1,786
2011	2,881,862	14.9	6.50	66.15	1,912
2012	3,584,307	24.4	6.30	68.49	2,210
2013	4,210,165	17.5	6.75	69.53	2,547
2014	4,502,775	7.0	6.50	67.55	2,736

International Tourist Arrivals to Cambodia

Months	2010	2011	2012	2013	2014	2015	Change (%)				
							11/10	12/11	13/12	14/13	15*/14
Q1	683,692	778,467	995,210	1,172,072	1,267,922	890,784	13.9	27.8	17.8	8.2	-29.7
January	232,590	274,471	350,257	404,106	442,045	460,577	18.0	27.6	15.4	9.4	4.2
February	222,354	255,499	321,870	385,760	425,801	430,207	14.9	26.0	19.8	10.4	1.0
March	228,748	248,497	323,083	382,206	400,076		8.6	30.0	18.3	4.7	
Q2	537,464	606,562	761,442	920,527	933,446	0	12.9	25.5	20.9	1.4	
April	200,965	223,032	277,304	327,000	332,690		11.0	24.3	17.9	1.7	
May	170,164	190,258	233,220	292,115	300,302		11.8	22.6	25.3	2.8	
June	166,335	193,272	250,918	301,412	300,454		16.2	29.8	20.1	-0.3	
Q3	582,024	699,760	820,888	964,612	998,690	0	20.2	17.3	17.5	3.5	
July	202,349	239,527	284,282	338,761	340,091		18.4	18.7	19.2	0.4	
August	206,563	250,429	293,859	342,064	347,211		21.2	17.3	16.4	1.5	
September	173,112	209,804	242,747	283,787	311,388		21.2	15.7	16.9	9.7	
Q4	705,109	797,073	1,006,767	1,152,954	1,302,717	0	13.0	26.3	14.5	13.0	
October	205,515	233,190	290,959	334,410	390,637		13.5	24.8	14.9	16.8	
November	249,892	265,539	333,482	386,737	411,501		6.3	25.6	16.0	6.4	
December	249,702	298,344	382,326	431,807	500,579		19.5	28.1	12.9	15.9	
Total	2,508,289	2,881,862	3,584,307	4,210,165	4,502,775	890,784	14.9	24.4	17.5	7.0	2.6



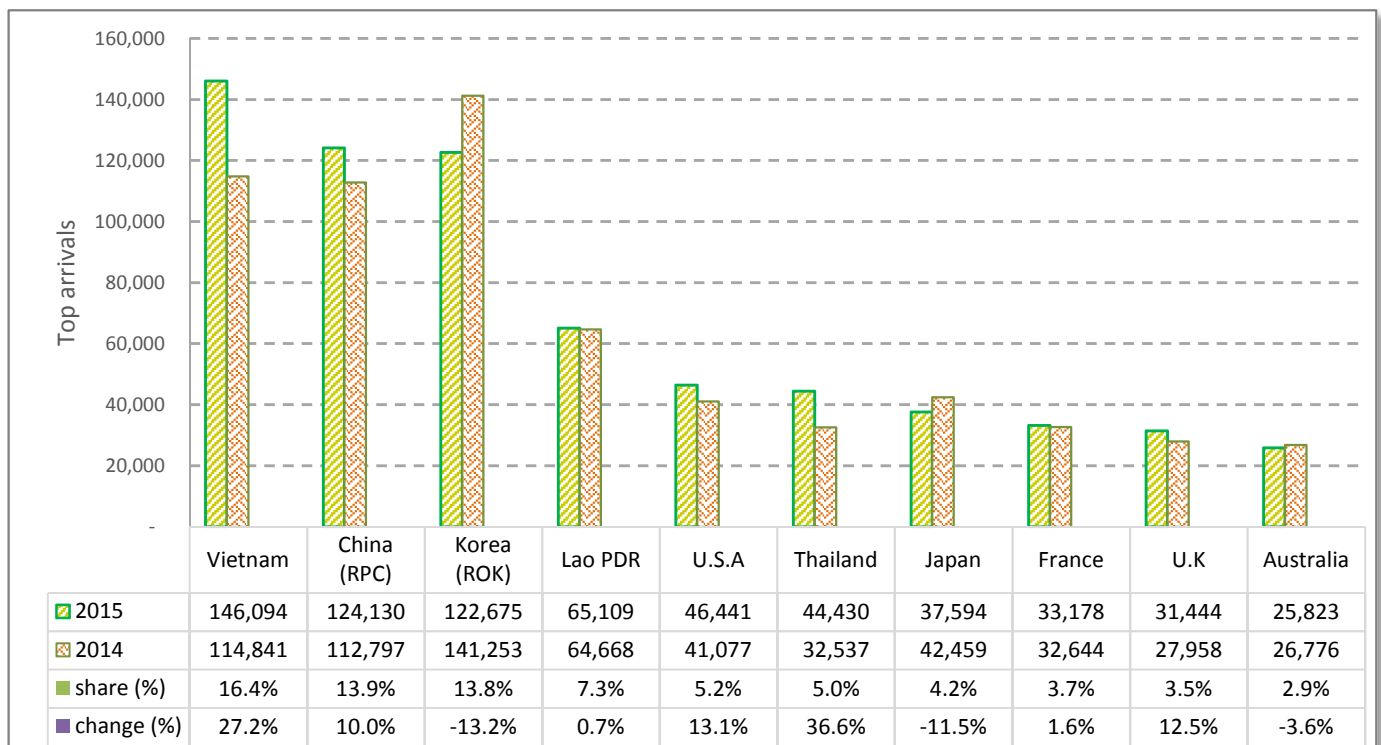
CAMBODIA: TOURISM STATISTICS REPORT IN THE FIRST TWO MONTHS 2015

I. INBOUND TOURISM

1. International tourist arrivals in January - February 2015

	Inbound tourism		share (%)		change (%)
	2014	2015	2014	2015	2015*/14
Air	494,536	504,111	57.0	56.6	1.9
Phnom Penh Int'l Airport (PNH)	167,603	178,136	19.3	20.0	6.3
Siem Reap Int'l Airport (REP)	326,933	325,975	37.7	36.6	-0.3
Land and Water ways	373,310	386,673	43.0	43.4	3.6
Land	353,223	356,817	40.7	40.1	1.0
Waterway	20,087	29,856	2.3	3.4	48.6
Total	867,846	890,784	100.0	100.0	2.6

2. Top ten markets arrivals in January - February 2015



II. OUTBOUND TOURISM

Outbound tourism in January - February 2015

	Outbound tourism		change (%)
	2014	2015	2015*/14
Cambodian Outbound Tourists	136,542	159,465	16.8
International Tourists Departure	863,982	866,224	0.3

III. INTERNAL TOURISM

Foreign visitor arrivals to the regions in January - February 2015

	Arrivals		share (%)		change (%)
	2014	2015	2014	2015	2015*/14
Phnom Penh & Surrounding	319,289	407,564	31.9	38.9	27.6
Siem Reap Angkor	548,557	483,220	54.8	46.1	-11.9
Coastal Areas	120,035	143,424	12.0	13.7	19.5
Eco-tourism Areas	13,987	14,030	1.4	1.3	0.3
Total	1,001,868	1,048,238	100.0	100.0	4.6

International Tourist Arrivals to Cambodia by Country of Residence in January - February 2015

(by all mean of transportations)

Regions Country of Residence	2014	2015			Total	Female	Share	Change
		Purpose of Visit					(%)	(%)
		Holiday	Business	Other	2015*	2015*/14		
Grand Total	867,846	815,499	38,890	36,395	890,784	391,033	100.0	2.6
Asia and the Pacific	616,658	581,075	32,762	31,724	645,561	282,427	72.5	4.7
ASEAN (South-East Asia)	264,409	259,706	13,152	29,133	301,991	129,501	33.9	14.2
Brunei Darussalam	132	90	6	12	108	39	0.0	-18.2
Indonesia	5,336	4,476	2,021	688	7,185	1,822	0.8	34.7
Lao PDR	64,668	60,607	27	4,475	65,109	36,485	7.3	0.7
Malaysia	19,792	17,944	1,314	90	19,348	6,099	2.2	-2.2
Myanmar	714	942	77	153	1,172	449	0.1	64.1
Philippines	18,581	8,966	1,617	319	10,902	6,113	1.2	-41.3
Singapore	7,808	7,137	438	68	7,643	2,240	0.9	-2.1
Thailand	32,537	39,425	2,314	2,691	44,430	18,264	5.0	36.6
Vietnam	114,841	120,119	5,338	20,637	146,094	57,990	16.4	27.2
North-East Asia	315,843	286,991	17,877	1,401	306,269	137,022	34.4	-3.0
China	112,797	113,319	10,208	603	124,130	57,943	13.9	10.0
Hong Kong (China)	1,255	2,591	22	5	2,618	1,244	0.3	108.6
Japan	42,459	33,966	3,267	361	37,594	14,977	4.2	-11.5
Korea (ROK)	141,253	120,230	2,029	416	122,675	54,591	13.8	-13.2
Macau (China)		89	0	0	89	42	0.0	
Mongolia	81	101	2	1	104	62	0.0	28.4
Taiwan (China)	17,998	16,695	2,349	15	19,059	8,163	2.1	5.9
Southern Asia	5,428	5,438	689	626	6,753	1,879	0.8	24.4
Afghanistan	49	6	0	4	10	2	0.0	-79.6
Bangladesh	246	192	64	32	288	57	0.0	17.1
Bhutan	19	15	0	4	19	12	0.0	0.0
India	4,421	4,665	452	479	5,596	1,627	0.6	26.6
Nepal	223	294	36	42	372	93	0.0	66.8
Pakistan	198	128	49	34	211	44	0.0	6.6
Srilanka	272	138	88	31	257	44	0.0	-5.5
Oceania	30,557	28,582	1,000	393	29,975	13,807	3.4	-1.9
Australia	26,776	24,604	873	346	25,823	11,891	2.9	-3.6
Fiji	25	15	9	2	26	10	0.0	4.0
New Zealand	3,756	3,963	118	45	4,126	1,906	0.5	9.9
Other Asia & the Pacific	421	358	44	171	573	218	0.1	36.1
Europe	184,451	162,800	4,036	2,733	169,569	74,196	19.0	-8.1
Northern Europe	44,929	45,613	1,281	578	47,472	19,794	5.3	5.7
Denmark	3,985	3,385	60	37	3,482	1,519	0.4	-12.6
Finland	2,294	2,251	48	33	2,332	936	0.3	1.7
Iceland	127	171	3	3	177	71	0.0	39.4
Ireland	1,950	1,896	63	33	1,992	821	0.2	2.2
Norway	2,725	2,644	35	20	2,699	1,243	0.3	-1.0
Sweden	5,890	5,212	86	48	5,346	2,198	0.6	-9.2
United Kingdom	27,958	30,054	986	404	31,444	13,006	3.5	12.5
Western Europe	72,335	71,649	1,898	1,093	74,640	32,211	8.4	3.2
Austria	2,733	3,111	39	49	3,199	1,299	0.4	17.1
Belgium	3,339	3,432	85	63	3,580	1,482	0.4	7.2
France	32,644	31,549	1,146	483	33,178	14,851	3.7	1.6
Germany	21,461	21,955	341	329	22,625	9,385	2.5	5.4
Luxembourg	124	141	0	2	143	56	0.0	15.3
Monaco	21	17	0	3	20	11	0.0	-4.8
Netherlands	6,386	5,820	182	114	6,116	2,594	0.7	-4.2
Switzerland	5,627	5,624	105	50	5,779	2,533	0.6	2.7
Central / Eastern Europe	53,590	31,084	427	561	32,072	15,847	3.6	-40.2
Bulgaria	311	411	4	65	480	201	0.1	54.3
Czech Republic	1,773	1,674	8	31	1,713	705	0.2	-3.4
Estonia	622	689	8	9	706	314	0.1	13.5
Hungary	1,112	1,405	18	46	1,469	629	0.2	32.1
Kazakhstan	1,096	812	31	6	849	470	0.1	-22.5
Kyrgyzstan		42	4	1	47	24	0.0	
Latvia		239	2	6	247	111	0.0	
Lithuania	508	545	2	25	572	291	0.1	12.6
Poland	3,919	4,303	16	94	4,413	2,245	0.5	12.6
Romania	474	534	9	82	625	294	0.1	31.9
Russian Federation	40,677	17,976	266	55	18,297	9,309	2.1	-55.0
Slovakia	681	593	9	28	630	255	0.1	-7.5
Ukraine	2,286	1,746	40	111	1,897	923	0.2	-17.0
Uzbekistan	131	115	10	2	127	76	0.0	-3.1

Source: Statistics and Tourism Information Department, MOT

International Tourist Arrivals to Cambodia by Country of Residence in January - February 2015

(by all mean of transportations)

Regions Country of Residence	2014	2015			Total	Female	Share	Change
		Purpose of Visit					(%)	(%)
		Holiday	Business	Other	2015*	2015*/14		
Grand Total	867,846	815,499	38,890	36,395	890,784	391,033	100.0	2.6
Southern Europe	13,282	14,152	400	413	14,965	6,167	1.7	12.7
Croatia	255	293	6	75	374	154	0.0	46.7
Greece	406	436	13	13	462	184	0.1	13.8
Italy	6,870	6,926	122	71	7,119	2,909	0.8	3.6
Malta		96	1	6	103	36	0.0	
Portugal	677	785	30	49	864	398	0.1	27.6
Serbia	207	257	3	55	315	133	0.0	52.2
Slovenia	331	348	9	13	370	158	0.0	11.8
Spain	3,417	3,582	92	68	3,742	1,651	0.4	9.5
Turkey	1,119	1,429	124	63	1,616	544	0.2	44.4
Other Europe	315	302	30	88	420	177	0.0	33.3
Americas	62,454	67,104	1,843	1,667	70,614	32,430	7.9	13.1
North America	55,353	58,947	1,740	1,404	62,091	28,203	7.0	12.2
Canada	13,590	14,221	379	160	14,760	6,644	1.7	8.6
Mexico	686	863	11	16	890	478	0.1	29.7
United States	41,077	43,863	1,350	1,228	46,441	21,081	5.2	13.1
Central America	69	136	3	30	169	88	0.0	
Costa Rica	69	122	1	8	131	72	0.0	89.9
Honduras		7	1	10	18	11	0.0	
Jamaica		7	1	12	20	5	0.0	
South America	6,822	7,836	65	134	8,035	4,009	0.9	17.8
Argentina	2,089	2,133	9	12	2,154	1,075	0.2	3.1
Brazil	2,430	3,195	23	52	3,270	1,572	0.4	34.6
Chile	1,648	1,499	5	20	1,524	809	0.2	-7.5
Colombia	374	528	7	10	545	277	0.1	45.7
Ecuador	71	147	8	4	159	79	0.0	123.9
Peru	147	162	6	21	189	103	0.0	28.6
Uruguay	63	121	4	5	130	66	0.0	106.3
Venezuela		51	3	10	64	28	0.0	
Other Americas	210	185	35	99	319	130	0.0	51.9
Africa	1,013	1,157	180	200	1,537	641	0.2	51.7
North Africa	15	151	7	19	177	71	0.0	
Morocco		92	4	5	101	40	0.0	
Sudan	15	20	1	11	32	15	0.0	
Tunisia		39	2	3	44	16	0.0	
Subsaharan Africa	928	956	160	157	1,273	542	0.1	37.2
Cameroon	25	26	1	3	30	5	0.0	20.0
Congo	7	5	0	4	9	1	0.0	28.6
Ghana	49	9	2	3	14	2	0.0	-71.4
Kenya	39	32	4	2	38	22	0.0	-2.6
Liberia	9	3	0	2	5	0	0.0	-44.4
Nigeria	84	83	92	10	185	18	0.0	120.2
South Africa	709	769	59	128	956	476	0.1	34.8
Tanzania		6	0	2	8	4	0.0	
Uganda	6	7	1	0	8	4	0.0	33.3
Zimbabwe		16	1	3	20	10	0.0	
Other Africa	70	50	13	24	87	28	0.0	24.3
Middle East	3,270	3,363	69	71	3,503	1,339	0.4	7.1
Egypt	52	123	4	2	129	34	0.0	148.1
Iran	105	92	8	1	101	23	0.0	-3.8
Iraq	8	11	1	2	14	1	0.0	75.0
Israel	2,755	2,650	43	9	2,702	1,186	0.3	-1.9
Jordan		47	2	1	50	14	0.0	
Kuwait	189	185	0	16	201	13	0.0	6.3
Oman	38	48	0	5	53	12	0.0	39.5
Palestine	11	3	2	2	7	0	0.0	-36.4
Qatar	8	33	0	11	44	19	0.0	450.0
Saudi Arabia	23	61	4	7	72	9	0.0	213.0
Syria		27	0	1	28	6	0.0	
United Arab Emirates	9	12	0	1	13	0	0.0	44.4
Yemen	25	28	0	2	30	6	0.0	20.0
Other Middle East	47	43	5	11	59	16	0.0	25.5

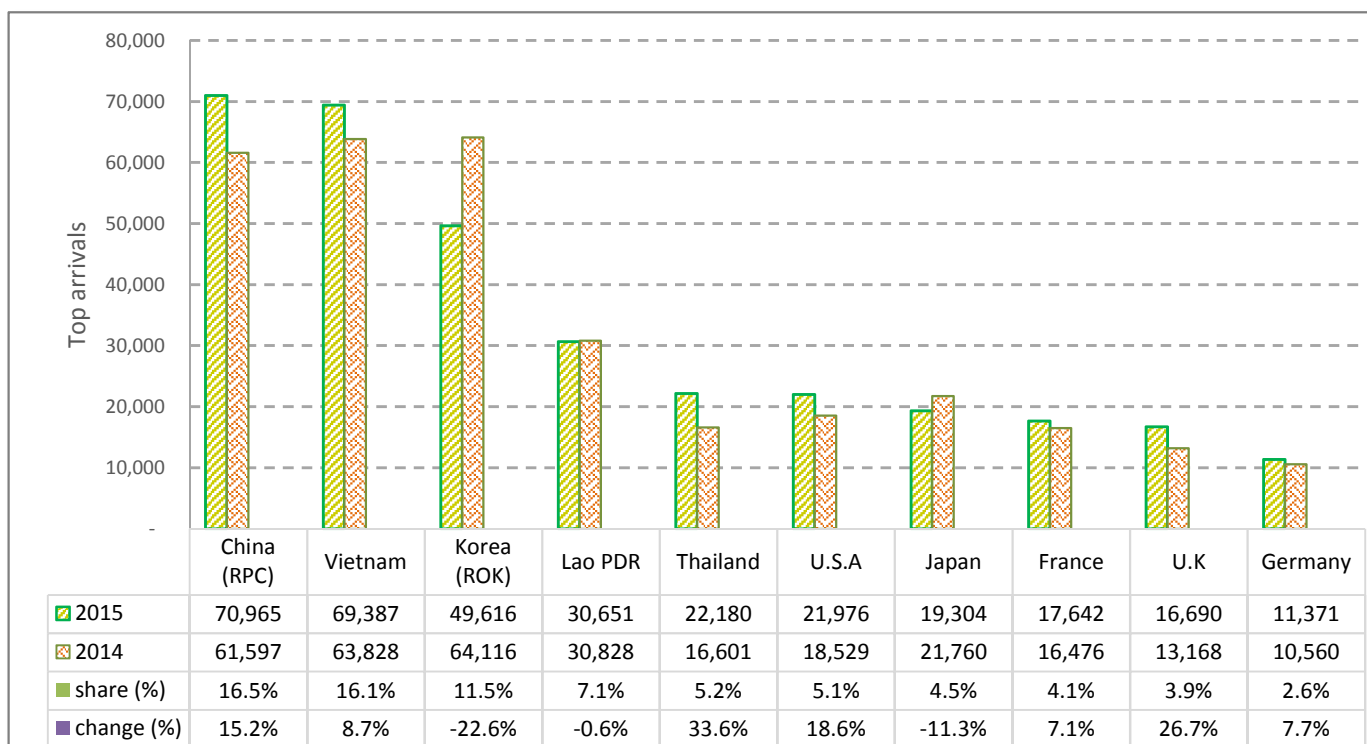
CAMBODIA: TOURISM STATISTICS REPORT IN FEBRUARY 2015

I. INBOUND TOURISM

1. International tourist arrivals in February 2015

	Inbound tourism		share (%)		change (%)
	2014	2015	2014	2015	2015*/14
Air	240,606	241,755	56.5	56.2	0.5
Phnom Penh Int'l Airport (PNH)	83,167	84,319	19.5	19.6	1.4
Siem Reap Int'l Airport (REP)	157,439	157,436	37.0	36.6	0.0
Land and Water ways	185,195	188,452	43.5	43.8	1.8
Land	175,369	171,267	41.2	39.8	-2.3
Waterway	9,826	17,185	2.3	4.0	74.9
Total	425,801	430,207	100.0	100.0	1.0

2. Top ten markets arrivals in February 2015



II. OUTBOUND TOURISM

Outbound tourism in February 2015

	Outbound tourism		change (%)
	2014	2015	2015*/14
Cambodian Outbound Tourists	67,924	77,358	13.9
International Tourists Departure	416,706	418,965	0.5

III. INTERNAL TOURISM

Foreign visitor arrivals to the regions in February 2015

	Arrivals		share (%)		change (%)
	2014	2015	2014	2015	2015*/14
Phnom Penh & Surrounding	163,575	192,478	33.2	37.8	17.7
Siem Reap Angkor	262,226	237,729	53.2	46.7	-9.3
Coastal Areas	60,315	71,242	12.2	14.0	18.1
Eco-tourism Areas	6,567	7,547	1.3	1.5	14.9
Total	492,683	508,996	100.0	100.0	3.3

International Tourist Arrivals to Cambodia by Country of Residence in February 2015

(by all mean of transportations)

Regions Country of Residence	2014	2015			Total	Female	Share	Change
		Purpose of Visit					(%)	(%)
		Holiday	Business	Other			2015*	2015*/14
Grand Total	425,801	393,644	19,204	17,359	430,207	187,622	100.0	1.0
Asia and the Pacific	308,448	278,589	16,618	14,505	309,712	133,909	72.0	0.4
ASEAN (South-East Asia)	137,670	124,208	6,939	12,921	144,068	60,761	33.5	4.6
Brunei Darussalam	66	22	3	6	31	7	0.0	-53.0
Indonesia	2,712	1,806	1,168	660	3,634	838	0.8	34.0
Lao PDR	30,828	30,023	11	617	30,651	16,358	7.1	-0.6
Malaysia	10,733	8,073	759	61	8,893	2,913	2.1	-17.1
Myanmar	326	285	28	147	460	139	0.1	41.1
Philippines	8,822	4,650	600	232	5,482	3,039	1.3	-37.9
Singapore	3,754	3,078	229	43	3,350	1,033	0.8	-10.8
Thailand	16,601	19,515	995	1,670	22,180	8,684	5.2	33.6
Vietnam	63,828	56,756	3,146	9,485	69,387	27,750	16.1	8.7
North-East Asia	157,117	141,065	8,964	793	150,822	67,211	35.1	-4.0
China	61,597	65,344	5,265	356	70,965	34,250	16.5	15.2
Hong Kong (China)	547	1,513	12	3	1,528	713	0.4	179.3
Japan	21,760	17,596	1,544	164	19,304	7,494	4.5	-11.3
Korea (ROK)	64,116	48,387	966	263	49,616	20,545	11.5	-22.6
Macau (China)		62	0	0	62	35	0.0	
Mongolia	31	33	0	0	33	22	0.0	6.5
Taiwan (China)	9,066	8,130	1,177	7	9,314	4,152	2.2	2.7
Southern Asia	2,286	2,279	294	525	3,098	771	0.7	35.5
Afghanistan	36	3	0	0	3	0	0.0	-91.7
Bangladesh	117	88	31	19	138	18	0.0	17.9
Bhutan	3	5	0	2	7	4	0.0	133.3
India	1,786	1,929	191	426	2,546	665	0.6	42.6
Nepal	116	134	16	28	178	48	0.0	53.4
Pakistan	97	70	19	23	112	22	0.0	15.5
Sri Lanka	131	50	37	27	114	14	0.0	-13.0
Oceania	11,207	10,874	400	177	11,451	5,064	2.7	2.2
Australia	9,883	9,541	351	149	10,041	4,422	2.3	1.6
Fiji	14	6	1	1	8	0	0.0	-42.9
New Zealand	1,310	1,327	48	27	1,402	642	0.3	7.0
Other Asia & the Pacific	168	163	21	89	273	102	0.1	62.5
Europe	86,792	80,532	1,732	1,839	84,103	37,385	19.5	-3.1
Northern Europe	21,235	23,453	535	366	24,354	10,454	5.7	14.7
Denmark	2,112	1,716	21	13	1,750	768	0.4	-17.1
Finland	988	954	23	21	998	418	0.2	1.0
Iceland	54	98	2	1	101	37	0.0	87.0
Ireland	818	912	28	19	959	401	0.2	17.2
Norway	1,381	1,407	16	7	1,430	689	0.3	3.5
Sweden	2,714	2,364	34	28	2,426	1,035	0.6	-10.6
United Kingdom	13,168	16,002	411	277	16,690	7,106	3.9	26.7
Western Europe	35,434	36,713	788	625	38,126	16,909	8.9	7.6
Austria	1,342	1,611	15	42	1,668	687	0.4	24.3
Belgium	1,652	1,774	38	19	1,831	779	0.4	10.8
France	16,476	16,940	486	216	17,642	8,004	4.1	7.1
Germany	10,560	10,992	132	247	11,371	4,961	2.6	7.7
Luxembourg	50	64	0	0	64	23	0.0	28.0
Monaco	1	12	0	0	12	7	0.0	1100.0
Netherlands	2,936	2,729	81	72	2,882	1,247	0.7	-1.8
Switzerland	2,417	2,591	36	29	2,656	1,201	0.6	9.9
Central / Eastern Europe	23,930	13,683	193	484	14,360	7,024	3.3	-40.0
Bulgaria	136	217	1	62	280	113	0.1	105.9
Czech Republic	839	904	5	20	929	391	0.2	10.7
Estonia	354	304	1	8	313	149	0.1	-11.6
Hungary	550	702	5	42	749	334	0.2	36.2
Kazakhstan	410	375	13	0	388	217	0.1	-5.4
Kyrgyzstan		17	3	0	20	10	0.0	
Latvia		111	1	1	113	46	0.0	
Lithuania	221	283	1	22	306	163	0.1	38.5
Poland	1,973	2,220	10	86	2,316	1,194	0.5	17.4
Romania	223	246	2	81	329	148	0.1	47.5
Russian Federation	17,964	7,153	125	35	7,313	3,666	1.7	-59.3
Slovakia	304	309	3	17	329	143	0.1	8.2
Ukraine	900	780	17	109	906	406	0.2	0.7
Uzbekistan	56	62	6	1	69	44	0.0	23.2

Source: Statistics and Tourism Information Department, MOT

International Tourist Arrivals to Cambodia by Country of Residence in February 2015

(by all mean of transportations)

Regions Country of Residence	2014	2015			Total	Female	Share	Change
		Purpose of Visit					(%)	(%)
		Holiday	Business	Other			2015*	2015*/14
Grand Total	425,801	393,644	19,204	17,359	430,207	187,622	100.0	1.0
Southern Europe	6,079	6,588	204	321	7,113	2,934	1.7	17.0
Croatia	106	113	3	73	189	69	0.0	78.3
Greece	215	140	2	11	153	61	0.0	-28.8
Italy	3,081	3,069	51	49	3,169	1,312	0.7	2.9
Malta		35	0	2	37	13	0.0	
Portugal	333	439	17	46	502	231	0.1	50.8
Serbia	99	108	1	53	162	71	0.0	63.6
Slovenia	160	160	4	5	169	74	0.0	5.6
Spain	1,573	1,804	35	36	1,875	825	0.4	19.2
Turkey	512	720	91	46	857	278	0.2	67.4
Other Europe	114	95	12	43	150	64	0.0	31.6
Americas	28,652	32,329	739	840	33,908	15,339	7.9	18.3
North America	25,579	28,440	706	669	29,815	13,308	6.9	16.6
Canada	6,757	7,198	148	84	7,430	3,324	1.7	10.0
Mexico	293	395	3	11	409	218	0.1	39.6
United States	18,529	20,847	555	574	21,976	9,766	5.1	18.6
Central America	17	51	1	21	73	34	0.0	
Costa Rica	17	47	1	4	52	30	0.0	205.9
Honduras		2	0	7	9	2	0.0	
Jamaica		2	0	10	12	2	0.0	
South America	2,975	3,762	18	115	3,895	1,945	0.9	30.9
Argentina	892	999	4	10	1,013	496	0.2	13.6
Brazil	843	1,394	6	47	1,447	705	0.3	71.6
Chile	993	915	0	19	934	486	0.2	-5.9
Colombia	106	227	1	9	237	126	0.1	123.6
Ecuador	29	73	3	1	77	39	0.0	165.5
Peru	77	80	3	20	103	56	0.0	33.8
Uruguay	35	44	1	4	49	22	0.0	40.0
Venezuela		30	0	5	35	15	0.0	
Other Americas	81	76	14	35	125	52	0.0	54.3
Africa	382	523	86	148	757	313	0.2	98.2
North Africa	0	94	3	7	104	45	0.0	
Morocco		52	1	2	55	25	0.0	
Sudan		18	1	4	23	11	0.0	
Tunisia		24	1	1	26	9	0.0	
Subsaharan Africa	360	411	77	131	619	256	0.1	71.9
Cameroon	11	13	0	0	13	4	0.0	18.2
Congo	1	3	0	3	6	1	0.0	500.0
Ghana	43	6	2	1	9	1	0.0	-79.1
Kenya	18	23	2	0	25	14	0.0	38.9
Liberia	3	0	0	1	1	0	0.0	-66.7
Nigeria	36	33	45	1	79	6	0.0	119.4
South Africa	244	318	27	123	468	222	0.1	91.8
Tanzania		2	0	1	3	1	0.0	
Uganda	4	6	0	0	6	4	0.0	50.0
Zimbabwe		7	1	1	9	3	0.0	
Other Africa	22	18	6	10	34	12	0.0	54.5
Middle East	1,527	1,671	29	27	1,727	676	0.4	13.1
Egypt	25	50	2	0	52	10	0.0	108.0
Iran	43	35	5	0	40	6	0.0	-7.0
Iraq	5	5	0	0	5	0	0.0	0.0
Israel	1,296	1,370	17	1	1,388	617	0.3	7.1
Jordan		25	1	0	26	10	0.0	
Kuwait	102	62	0	6	68	4	0.0	-33.3
Oman	10	31	0	2	33	9	0.0	230.0
Palestine	9	1	0	0	1	0	0.0	-88.9
Qatar	6	6	0	10	16	0	0.0	166.7
Saudi Arabia	6	36	1	3	40	6	0.0	566.7
Syria		10	0	0	10	2	0.0	
United Arab Emirates	2	7	0	0	7	0	0.0	250.0
Yemen	10	17	0	0	17	5	0.0	70.0
Other Middle East	13	16	3	5	24	7	0.0	84.6