



KINGDOM OF CAMBODIA  
NATION RELIGION KING



# TOURISM STATISTICS REPORT

# January 2015

**MINISTRY OF TOURISM**

Statistics and Tourism Information Department

No. A3, Street 169, Sangkat Veal Vong, Khan 7 Makara, Phnom Penh, Cambodia.

Fax: +855 23 885003

E-mail: [kong@mot.gov.kh](mailto:kong@mot.gov.kh)

Web site: [www.mot.gov.kh](http://www.mot.gov.kh)

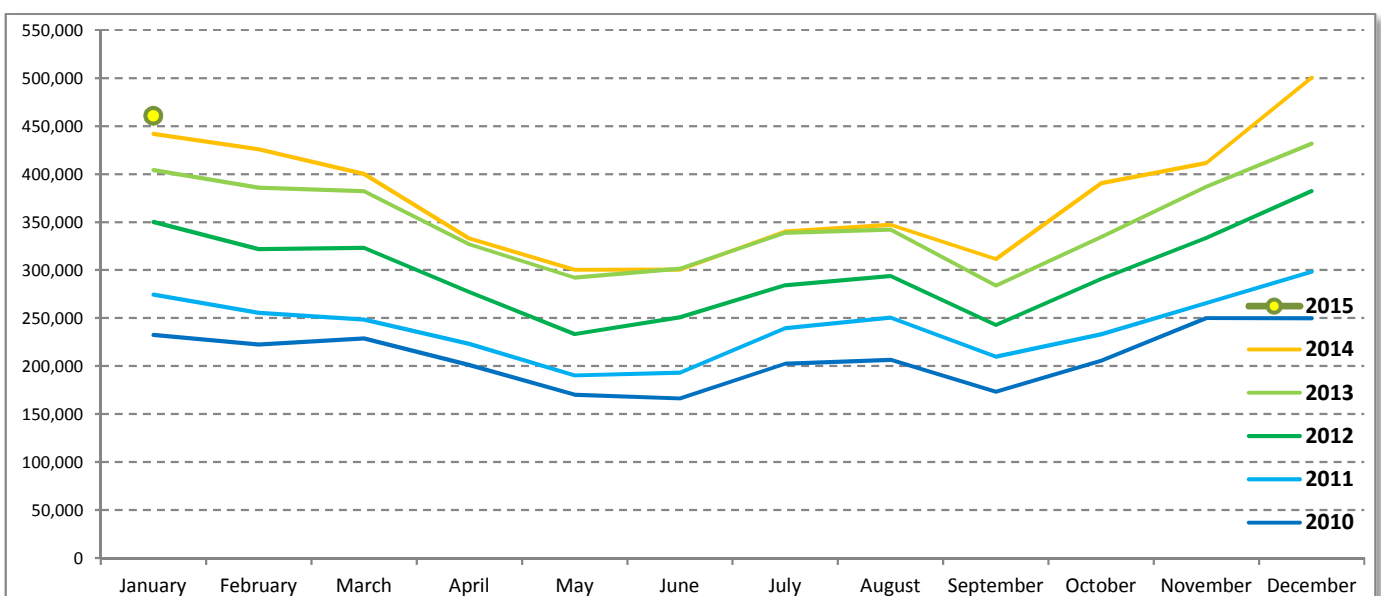
## Tourism Highlights

### International Tourist Arrivals, Average Length of Stay, Hotels Occupancy & Tourism Receipts 1993 - 2014

Years	Int'l Tourist Arrivals		Average Length	Hotels Occupancy	Tourism Receipts
	Number	Change (%)	of Stay (Days)	(%)	(Million US\$)
1993	118,183	-	N/A	N/A	N/A
1994	176,617	49.4	N/A	N/A	N/A
1995	219,680	24.4	8.00	37.00	100
1996	260,489	18.6	7.50	40.00	118
1997	218,843	-16.0	6.40	30.00	103
1998	286,524	30.9	5.20	40.00	166
1999	367,743	28.3	5.50	44.00	190
2000	466,365	26.8	5.50	45.00	228
2001	604,919	29.7	5.50	48.00	304
2002	786,524	30.0	5.80	50.00	379
2003	701,014	-10.9	5.50	50.00	347
2004	1,055,202	50.5	6.30	52.00	578
2005	1,421,615	34.7	6.30	52.00	832
2006	1,700,041	19.6	6.50	54.79	1,049
2007	2,015,128	18.5	6.50	54.79	1,400
2008	2,125,465	5.5	6.65	62.68	1,595
2009	2,161,577	1.7	6.45	63.57	1,561
2010	2,508,289	16.0	6.45	65.74	1,786
2011	2,881,862	14.9	6.50	66.15	1,912
2012	3,584,307	24.4	6.30	68.49	2,210
2013	4,210,165	17.5	6.75	69.53	2,547
2014	4,502,775	7.0	6.50	67.55	2,736

### International tourist arrivals to Cambodia

Destination	Months	2010	2011	2012	2013	2014	2015	change (%) 2015*/14
<b>Cambodia</b>	<b>Q1</b>	<b>683,692</b>	<b>778,467</b>	<b>995,210</b>	<b>1,172,072</b>	<b>1,267,922</b>	<b>460,577</b>	
<i>International tourist arrivals by all means of transportations</i>	January	232,590	274,471	350,257	404,106	442,045	460,577	4.2
	February	222,354	255,499	321,870	385,760	425,801		
	March	228,748	248,497	323,083	382,206	400,076		
	<b>Q2</b>	<b>537,464</b>	<b>606,562</b>	<b>761,442</b>	<b>920,527</b>	<b>933,446</b>	<b>0</b>	
	April	200,965	223,032	277,304	327,000	332,690		
	May	170,164	190,258	233,220	292,115	300,302		
	June	166,335	193,272	250,918	301,412	300,454		
	<b>Q3</b>	<b>582,024</b>	<b>699,760</b>	<b>820,888</b>	<b>964,612</b>	<b>998,690</b>	<b>0</b>	
	July	202,349	239,527	284,282	338,761	340,091		
	August	206,563	250,429	293,859	342,064	347,211		
	September	173,112	209,804	242,747	283,787	311,388		
	<b>Q4</b>	<b>705,109</b>	<b>797,073</b>	<b>1,006,767</b>	<b>1,152,954</b>	<b>1,302,717</b>	<b>0</b>	
October	205,515	233,190	290,959	334,410	390,637			
November	249,892	265,539	333,482	386,737	411,501			
December	249,702	298,344	382,326	431,807	500,579			
	<b>Total</b>	<b>2,508,289</b>	<b>2,881,862</b>	<b>3,584,307</b>	<b>4,210,165</b>	<b>4,502,775</b>	<b>460,577</b>	<b>4.2</b>



Source: Statistics and Tourism Information Department, MOT

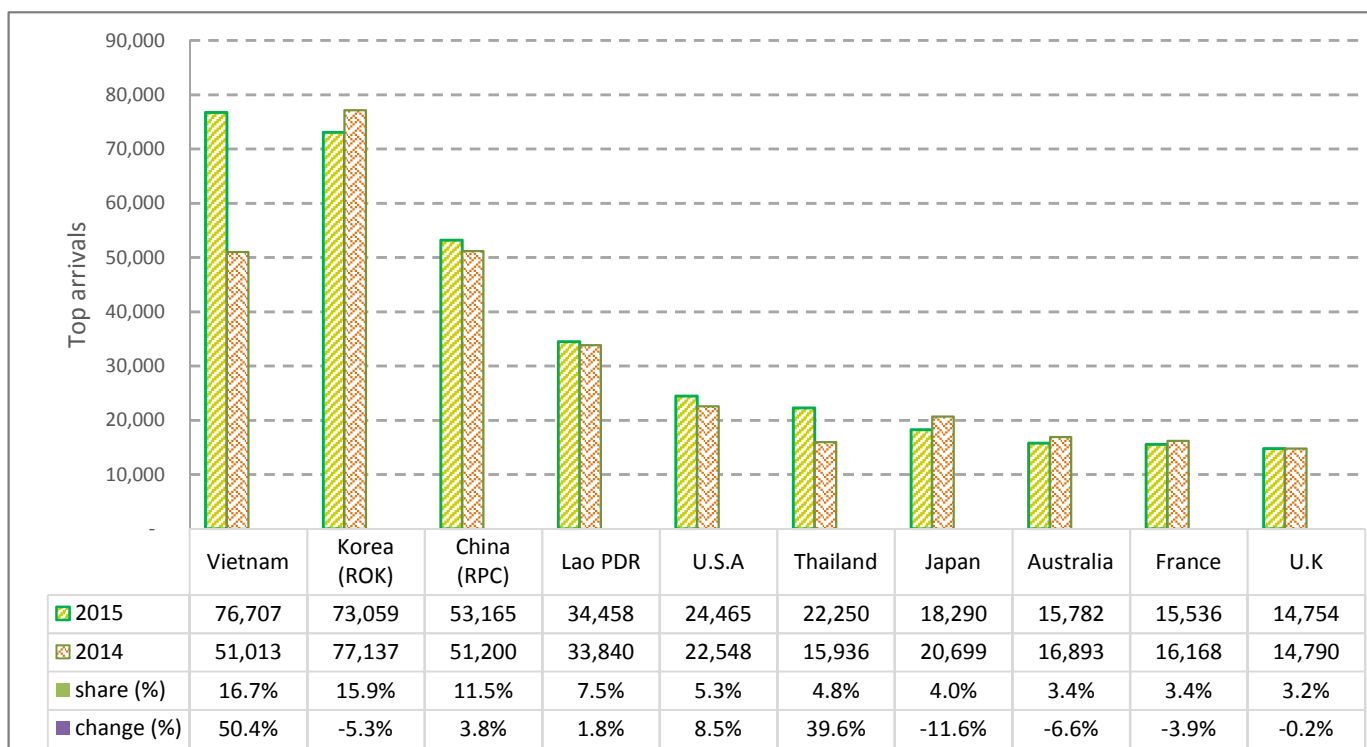
# CAMBODIA: TOURISM STATISTICS REPORT IN JANUARY 2015

## I. INBOUND TOURISM

### 1. International tourist arrivals in January 2015

	Inbound tourism		share (%)		change (%)
	2014	2015	2014	2015	2015*/14
<b>Air</b>	<b>253,930</b>	<b>262,356</b>	<b>57.4</b>	<b>57.0</b>	<b>3.3</b>
Phnom Penh Int'l Airport (PNH)	84,436	93,817	19.1	20.4	11.1
Siem Reap Int'l Airport (REP)	169,494	168,539	38.3	36.6	-0.6
<b>Land and Water ways</b>	<b>188,115</b>	<b>198,221</b>	<b>42.6</b>	<b>43.0</b>	<b>5.4</b>
Land	177,854	185,550	40.2	40.3	4.3
Waterway	10,261	12,671	2.3	2.8	23.5
<b>Total</b>	<b>442,045</b>	<b>460,577</b>	<b>100.0</b>	<b>100.0</b>	<b>4.2</b>

### 2. Top ten markets arrivals in January 2015



## II. OUTBOUND TOURISM

### Outbound tourism in January 2015

	Outbound tourism		change (%)
	2014	2015	2015*/14
Cambodian Outbound Tourists	68,618	82,107	19.7
International Tourists Departure	447,276	447,259	0.0

## III. INTERNAL TOURISM

### Foreign visitor arrivals to the regions in January 2015

	Arrivals		share (%)		change (%)
	2014	2015	2014	2015	2015*/14
Phnom Penh & Surrounding	155,714	215,086	29.3	40.0	38.1
Siem Reap Angkor	286,331	245,491	53.9	45.6	-14.3
Coastal Areas	81,263	71,072	15.3	13.2	-12.5
Eco-tourism Areas	8,362	6,483	1.6	1.2	-22.5
<b>Total</b>	<b>531,670</b>	<b>538,132</b>	<b>100.0</b>	<b>100.0</b>	<b>1.2</b>

## International Tourist Arrivals to Cambodia by Country of Residence in January 2015

(by all mean of transportations)

Regions Country of Residence	2014	2015			Total	Female	Share	Change
		Purpose of Visit					(%)	(%)
		Holiday	Business	Other			2015*	2015*/14
<b>Grand Total</b>	<b>442,045</b>	<b>421,855</b>	<b>19,686</b>	<b>19,036</b>	<b>460,577</b>	<b>203,411</b>	<b>100.0</b>	<b>4.2</b>
<b>Asia and the Pacific</b>	<b>308,210</b>	<b>302,486</b>	<b>16,144</b>	<b>17,219</b>	<b>335,849</b>	<b>148,518</b>	<b>72.9</b>	<b>9.0</b>
<b>ASEAN (South-East Asia)</b>	<b>126,739</b>	<b>135,498</b>	<b>6,213</b>	<b>16,212</b>	<b>157,923</b>	<b>68,740</b>	<b>34.3</b>	<b>24.6</b>
Brunei Darussalam	66	68	3	6	77	32	0.0	16.7
Indonesia	2,624	2,670	853	28	3,551	984	0.8	35.3
Lao PDR	33,840	30,584	16	3,858	34,458	20,127	7.5	1.8
Malaysia	9,059	9,871	555	29	10,455	3,186	2.3	15.4
Myanmar	388	657	49	6	712	310	0.2	83.5
Philippines	9,759	4,316	1,017	87	5,420	3,074	1.2	-44.5
Singapore	4,054	4,059	209	25	4,293	1,207	0.9	5.9
Thailand	15,936	19,910	1,319	1,021	22,250	9,580	4.8	39.6
Vietnam	51,013	63,363	2,192	11,152	76,707	30,240	16.7	50.4
<b>North-East Asia</b>	<b>158,726</b>	<b>145,926</b>	<b>8,913</b>	<b>608</b>	<b>155,447</b>	<b>69,811</b>	<b>33.8</b>	<b>-2.1</b>
China	51,200	47,975	4,943	247	53,165	23,693	11.5	3.8
Hong Kong (China)	708	1,078	10	2	1,090	531	0.2	54.0
Japan	20,699	16,370	1,723	197	18,290	7,483	4.0	-11.6
Korea (ROK)	77,137	71,843	1,063	153	73,059	34,046	15.9	-5.3
Macau (China)		27	0	0	27	7	0.0	
Mongolia	50	68	2	1	71	40	0.0	42.0
Taiwan (China)	8,932	8,565	1,172	8	9,745	4,011	2.1	9.1
<b>Southern Asia</b>	<b>3,142</b>	<b>3,159</b>	<b>395</b>	<b>101</b>	<b>3,655</b>	<b>1,108</b>	<b>0.8</b>	<b>16.3</b>
Afghanistan	13	3	0	4	7	2	0.0	-46.2
Bangladesh	129	104	33	13	150	39	0.0	16.3
Bhutan	16	10	0	2	12	8	0.0	-25.0
India	2,635	2,736	261	53	3,050	962	0.7	15.7
Nepal	107	160	20	14	194	45	0.0	81.3
Pakistan	101	58	30	11	99	22	0.0	-2.0
Sri Lanka	141	88	51	4	143	30	0.0	1.4
<b>Oceania</b>	<b>19,350</b>	<b>17,708</b>	<b>600</b>	<b>216</b>	<b>18,524</b>	<b>8,743</b>	<b>4.0</b>	<b>-4.3</b>
Australia	16,893	15,063	522	197	15,782	7,469	3.4	-6.6
Fiji	11	9	8	1	18	10	0.0	63.6
New Zealand	2,446	2,636	70	18	2,724	1,264	0.6	11.4
Other Asia & the Pacific	253	195	23	82	300	116	0.1	18.6
<b>Europe</b>	<b>97,659</b>	<b>82,268</b>	<b>2,304</b>	<b>894</b>	<b>85,466</b>	<b>36,811</b>	<b>18.6</b>	<b>-12.5</b>
<b>Northern Europe</b>	<b>23,694</b>	<b>22,160</b>	<b>746</b>	<b>212</b>	<b>23,118</b>	<b>9,340</b>	<b>5.0</b>	<b>-2.4</b>
Denmark	1,873	1,669	39	24	1,732	751	0.4	-7.5
Finland	1,306	1,297	25	12	1,334	518	0.3	2.1
Iceland	73	73	1	2	76	34	0.0	4.1
Ireland	1,132	984	35	14	1,033	420	0.2	-8.7
Norway	1,344	1,237	19	13	1,269	554	0.3	-5.6
Sweden	3,176	2,848	52	20	2,920	1,163	0.6	-8.1
United Kingdom	14,790	14,052	575	127	14,754	5,900	3.2	-0.2
<b>Western Europe</b>	<b>36,901</b>	<b>34,936</b>	<b>1,110</b>	<b>468</b>	<b>36,514</b>	<b>15,302</b>	<b>7.9</b>	<b>-1.0</b>
Austria	1,391	1,500	24	7	1,531	612	0.3	10.1
Belgium	1,687	1,658	47	44	1,749	703	0.4	3.7
France	16,168	14,609	660	267	15,536	6,847	3.4	-3.9
Germany	10,901	10,963	209	82	11,254	4,424	2.4	3.2
Luxembourg	74	77	0	2	79	33	0.0	6.8
Monaco	20	5	0	3	8	4	0.0	-60.0
Netherlands	3,450	3,091	101	42	3,234	1,347	0.7	-6.3
Switzerland	3,210	3,033	69	21	3,123	1,332	0.7	-2.7
<b>Central / Eastern Europe</b>	<b>29,660</b>	<b>17,401</b>	<b>234</b>	<b>77</b>	<b>17,712</b>	<b>8,823</b>	<b>3.8</b>	<b>-40.3</b>
Bulgaria	175	194	3	3	200	88	0.0	14.3
Czech Republic	934	770	3	11	784	314	0.2	-16.1
Estonia	268	385	7	1	393	165	0.1	46.6
Hungary	562	703	13	4	720	295	0.2	28.1
Kazakhstan	686	437	18	6	461	253	0.1	-32.8
Kyrgyzstan		25	1	1	27	14	0.0	
Latvia		128	1	5	134	65	0.0	
Lithuania	287	262	1	3	266	128	0.1	-7.3
Poland	1,946	2,083	6	8	2,097	1,051	0.5	7.8
Romania	251	288	7	1	296	146	0.1	17.9
Russian Federation	22,713	10,823	141	20	10,984	5,643	2.4	-51.6
Slovakia	377	284	6	11	301	112	0.1	-20.2
Ukraine	1,386	966	23	2	991	517	0.2	-28.5
Uzbekistan	75	53	4	1	58	32	0.0	-22.7

Source: Statistics and Tourism Information Department, MOT

## International Tourist Arrivals to Cambodia by Country of Residence in January 2015

(by all mean of transportations)

Regions Country of Residence	2014	2015			Total	Female	Share	Change
		Purpose of Visit					(%)	(%)
		Holiday	Business	Other	2015*	2015*/14		
<b>Grand Total</b>	<b>442,045</b>	<b>421,855</b>	<b>19,686</b>	<b>19,036</b>	<b>460,577</b>	<b>203,411</b>	<b>100.0</b>	<b>4.2</b>
<b>Southern Europe</b>	<b>7,203</b>	<b>7,564</b>	<b>196</b>	<b>92</b>	<b>7,852</b>	<b>3,233</b>	<b>1.7</b>	<b>9.0</b>
Croatia	149	180	3	2	185	85	0.0	24.2
Greece	191	296	11	2	309	123	0.1	61.8
Italy	3,789	3,857	71	22	3,950	1,597	0.9	4.2
Malta		61	1	4	66	23	0.0	
Portugal	344	346	13	3	362	167	0.1	5.2
Serbia	108	149	2	2	153	62	0.0	41.7
Slovenia	171	188	5	8	201	84	0.0	17.5
Spain	1,844	1,778	57	32	1,867	826	0.4	1.2
Turkey	607	709	33	17	759	266	0.2	25.0
Other Europe	201	207	18	45	270	113	0.1	34.3
<b>Americas</b>	<b>33,802</b>	<b>34,775</b>	<b>1,104</b>	<b>827</b>	<b>36,706</b>	<b>17,091</b>	<b>8.0</b>	<b>8.6</b>
<b>North America</b>	<b>29,774</b>	<b>30,507</b>	<b>1,034</b>	<b>735</b>	<b>32,276</b>	<b>14,895</b>	<b>7.0</b>	<b>8.4</b>
Canada	6,833	7,023	231	76	7,330	3,320	1.6	7.3
Mexico	393	468	8	5	481	260	0.1	22.4
United States	22,548	23,016	795	654	24,465	11,315	5.3	8.5
<b>Central America</b>	<b>52</b>	<b>85</b>	<b>2</b>	<b>9</b>	<b>96</b>	<b>54</b>	<b>0.0</b>	
Costa Rica	52	75	0	4	79	42	0.0	51.9
Honduras		5	1	3	9	9	0.0	
Jamaica		5	1	2	8	3	0.0	
<b>South America</b>	<b>3,847</b>	<b>4,074</b>	<b>47</b>	<b>19</b>	<b>4,140</b>	<b>2,064</b>	<b>0.9</b>	<b>7.6</b>
Argentina	1,197	1,134	5	2	1,141	579	0.2	-4.7
Brazil	1,587	1,801	17	5	1,823	867	0.4	14.9
Chile	655	584	5	1	590	323	0.1	-9.9
Colombia	268	301	6	1	308	151	0.1	14.9
Ecuador	42	74	5	3	82	40	0.0	95.2
Peru	70	82	3	1	86	47	0.0	22.9
Uruguay	28	77	3	1	81	44	0.0	189.3
Venezuela		21	3	5	29	13	0.0	
Other Americas	129	109	21	64	194	78	0.0	50.4
<b>Africa</b>	<b>631</b>	<b>634</b>	<b>94</b>	<b>52</b>	<b>780</b>	<b>328</b>	<b>0.2</b>	<b>23.6</b>
<b>North Africa</b>	<b>15</b>	<b>57</b>	<b>4</b>	<b>12</b>	<b>73</b>	<b>26</b>	<b>0.0</b>	<b>386.7</b>
Morocco		40	3	3	46	15	0.0	
Sudan	15	2	0	7	9	4	0.0	-40.0
Tunisia		15	1	2	18	7	0.0	
<b>Subsaharan Africa</b>	<b>568</b>	<b>545</b>	<b>83</b>	<b>26</b>	<b>654</b>	<b>286</b>	<b>0.1</b>	<b>15.1</b>
Cameroon	14	13	1	3	17	1	0.0	21.4
Congo	6	2	0	1	3	0	0.0	-50.0
Ghana	6	3	0	2	5	1	0.0	-16.7
Kenya	21	9	2	2	13	8	0.0	-38.1
Liberia	6	3	0	1	4	0	0.0	-33.3
Nigeria	48	50	47	9	106	12	0.0	120.8
South Africa	465	451	32	5	488	254	0.1	4.9
Tanzania		4	0	1	5	3	0.0	
Uganda	2	1	1	0	2	0	0.0	0.0
Zimbabwe		9	0	2	11	7	0.0	
Other Africa	48	32	7	14	53	16	0.0	10.4
<b>Middle East</b>	<b>1,743</b>	<b>1,692</b>	<b>40</b>	<b>44</b>	<b>1,776</b>	<b>663</b>	<b>0.4</b>	<b>1.9</b>
Egypt	27	73	2	2	77	24	0.0	185.2
Iran	62	57	3	1	61	17	0.0	-1.6
Iraq	3	6	1	2	9	1	0.0	200.0
Israel	1,459	1,280	26	8	1,314	569	0.3	-9.9
Jordan		22	1	1	24	4	0.0	
Kuwait	87	123	0	10	133	9	0.0	52.9
Oman	28	17	0	3	20	3	0.0	-28.6
Palestine	2	2	2	2	6	0	0.0	200.0
Qatar	2	27	0	1	28	19	0.0	1300.0
Saudi Arabia	17	25	3	4	32	3	0.0	88.2
Syria		17	0	1	18	4	0.0	
United Arab Emirates	7	5	0	1	6	0	0.0	-14.3
Yemen	15	11	0	2	13	1	0.0	-13.3
Other Middle East	34	27	2	6	35	9	0.0	2.9