



KINGDOM OF CAMBODIA
NATION RELIGION KING



TOURISM STATISTICS REPORT

September 2014

MINISTRY OF TOURISM

Statistics and Tourism Information Department

No. A3, Street 169, Sangkat Veal Vong, Khan 7 Makara, Phnom Penh, Cambodia.

Fax: +855 23 885003

E-mail: kong@mot.gov.kh

Web site: www.mot.gov.kh

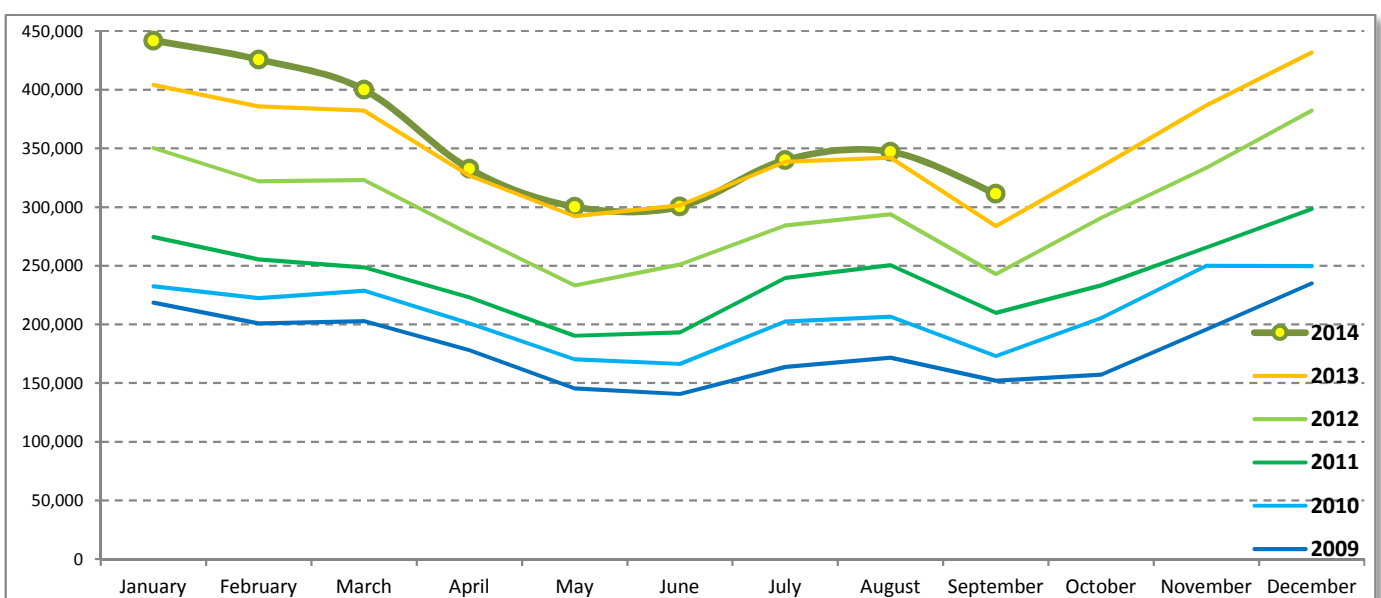
Tourism Highlights

International Tourist Arrivals, Average Length of Stay, Hotels Occupancy & Tourism Receipts 1993 - 2013

Years	Int'l Tourist Arrivals		Average Length	Hotels Occupancy	Tourism Receipts
	Number	Change (%)	of Stay (Days)	(%)	(Million US\$)
1993	118,183	-	N/A	N/A	N/A
1994	176,617	49.4	N/A	N/A	N/A
1995	219,680	24.4	8.00	37.00	100
1996	260,489	18.6	7.50	40.00	118
1997	218,843	-16.0	6.40	30.00	103
1998	286,524	30.9	5.20	40.00	166
1999	367,743	28.3	5.50	44.00	190
2000	466,365	26.8	5.50	45.00	228
2001	604,919	29.7	5.50	48.00	304
2002	786,524	30.0	5.80	50.00	379
2003	701,014	-10.9	5.50	50.00	347
2004	1,055,202	50.5	6.30	52.00	578
2005	1,421,615	34.7	6.30	52.00	832
2006	1,700,041	19.6	6.50	54.79	1,049
2007	2,015,128	18.5	6.50	54.79	1,400
2008	2,125,465	5.5	6.65	62.68	1,595
2009	2,161,577	1.7	6.45	63.57	1,561
2010	2,508,289	16.0	6.45	65.74	1,786
2011	2,881,862	14.9	6.50	66.15	1,912
2012	3,584,307	24.4	6.30	68.49	2,210
2013	4,210,165	17.5	6.75	69.53	2,547

International tourist arrivals to Cambodia

Destination	Months	2009	2010	2011	2012	2013	2014	change (%) 2014*/13
Cambodia	Q1	622,288	683,692	778,467	995,210	1,172,072	1,267,922	8.2
<i>International tourist arrivals by all means of transportations</i>	January	218,691	232,590	274,471	350,257	404,106	442,045	9.4
	February	200,789	222,354	255,499	321,870	385,760	425,801	10.4
	March	202,808	228,748	248,497	323,083	382,206	400,076	4.7
	Q2	464,230	537,464	606,562	761,442	920,527	933,446	1.4
	April	177,955	200,965	223,032	277,304	327,000	332,690	1.7
	May	145,564	170,164	190,258	233,220	292,115	300,302	2.8
	June	140,711	166,335	193,272	250,918	301,412	300,454	-0.3
	Q3	487,422	582,024	699,760	820,888	964,612	998,690	3.5
	July	163,817	202,349	239,527	284,282	338,761	340,091	0.4
	August	171,668	206,563	250,429	293,859	342,064	347,211	1.5
	September	151,937	173,112	209,804	242,747	283,787	311,388	9.7
	Q4	587,637	705,109	797,073	1,006,767	1,152,954	0	
	October	157,105	205,515	233,190	290,959	334,410		
	November	195,570	249,892	265,539	333,482	386,737		
	December	234,962	249,702	298,344	382,326	431,807		
	Total	2,161,577	2,508,289	2,881,862	3,584,307	4,210,165	3,200,058	4.7



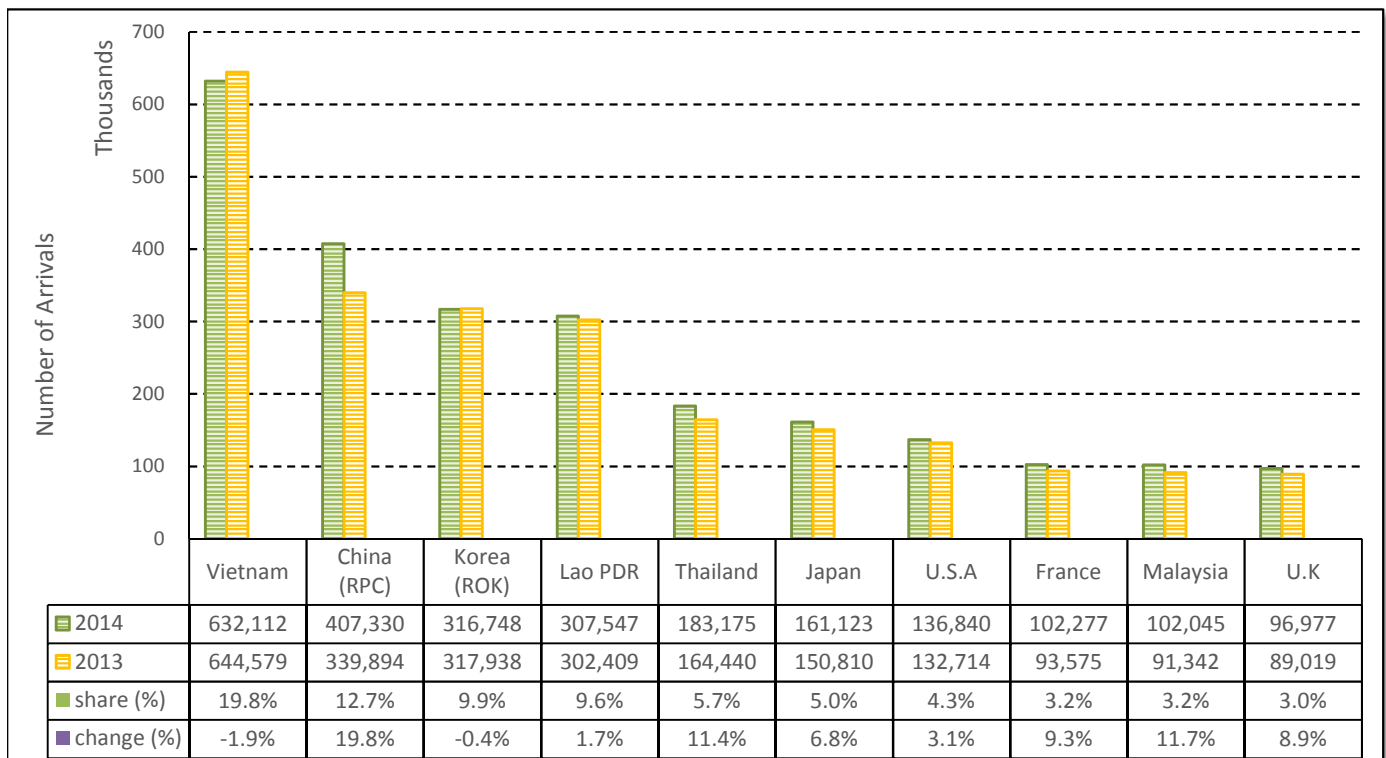
TOURISM STATISTICS REPORT IN THE FIRST NINE MONTHS 2014

I. INBOUND TOURISM

1. International tourist arrivals to Cambodia in January - September 2014

	Inbound tourism		share (%)		change (%)
	2013	2014	2013	2014	2014*/13
Air	1,437,227	1,634,656	47.0	51.1	13.7
Phnom Penh Int'l Airport (PNH)	600,631	662,742	19.6	20.7	10.3
Siem Reap Int'l Airport (REP)	836,596	971,914	27.4	30.4	16.2
Land and Water ways	1,619,984	1,565,402	53.0	48.9	-3.4
Land	1,568,639	1,499,371	51.3	46.9	-4.4
Waterway	51,345	66,031	1.7	2.1	28.6
Total	3,057,211	3,200,058	100.0	100.0	4.7

2. Top ten markets arrivals in January - September 2014



II. OUTBOUND TOURISM

Outbound tourism in January - September 2014

	Outbound tourism		change (%)
	2013	2014	2014*/13
Cambodian Outbound Tourists	644,393	707,579	9.8
International Tourists Departure	3,067,604	3,143,505	2.5

III. INTERNAL TOURISM

Foreign visitor arrivals to the regions in January - September 2014

	Arrivals		share (%)		change (%)
	2013	2014	2013	2014	2014*/13
Phnom Penh & Surrounding	1,483,288	1,458,877	42.4	39.7	-1.6
Siem Reap Angkor	1,573,923	1,741,181	44.9	47.4	10.6
Coastal Areas	399,844	426,768	11.4	11.6	6.7
Eco-tourism Areas	45,037	49,229	1.3	1.3	9.3
Total	3,502,092	3,676,055	100.0	100.0	5.0

International Tourist Arrivals to Cambodia by Country of Residence in January - September 2014

(by all mean of transportations)

Regions Country of Residence	2013		2014			share		change	
			Purpose of Visit			Total	Female	2014*	2014*/13
			Holiday	Business	Other				
GRAND TOTAL	3,057,211	3,028,693	150,354	21,011	3,200,058	1,460,018	100.0	4.7	
Asia and the Pacific	2,370,925	2,341,699	122,692	11,736	2,476,127	1,143,021	77.4	4.4	
ASEAN (South-East Asia)	1,353,461	1,329,584	37,404	5,530	1,372,518	648,939	42.9	1.4	
Brunei Darussalam	487	629	16	33	678	294	0.0	39.2	
Indonesia	20,510	21,510	4,307	222	26,039	7,210	0.8	27.0	
Lao PDR	302,409	306,927	149	471	307,547	189,178	9.6	1.7	
Malaysia	91,342	95,129	6,781	135	102,045	34,445	3.2	11.7	
Myanmar	3,775	3,836	351	119	4,306	1,770	0.1	14.1	
Philippines	87,175	65,443	5,919	566	71,928	41,595	2.2	-17.5	
Singapore	38,744	42,358	2,184	146	44,688	15,083	1.4	15.3	
Thailand	164,440	171,956	9,111	2,108	183,175	69,132	5.7	11.4	
Vietnam	644,579	621,796	8,586	1,730	632,112	290,232	19.8	-1.9	
North-East Asia	884,839	883,737	76,097	3,891	963,725	436,606	30.1	8.9	
China (RPC)	339,894	362,570	43,421	1,339	407,330	185,914	12.7	19.8	
Hong Kong SAR	4,755	5,553	161	11	5,725	2,741	0.2	20.4	
Japan	150,810	148,761	10,997	1,365	161,123	64,582	5.0	6.8	
Korea (ROK)	317,938	303,784	11,825	1,139	316,748	153,929	9.9	-0.4	
Mongolia	274	270	11	19	300	142	0.0	9.5	
Taiwan, China	71,168	62,799	9,682	18	72,499	29,298	2.3	1.9	
Southern Asia	21,160	21,156	2,996	732	24,884	7,040	0.8	17.6	
Afghanistan	237	173	8	12	193	51	0.0	-18.6	
Bangladesh	1,306	1,045	205	136	1,386	189	0.0	6.1	
Bhutan	76	59	1	16	76	28	0.0	0.0	
India	16,433	17,438	1,993	362	19,793	6,052	0.6	20.4	
Nepal	1,053	983	170	69	1,222	253	0.0	16.0	
Pakistan	857	553	261	71	885	146	0.0	3.3	
Sri Lanka	1,198	905	358	66	1,329	321	0.0	10.9	
Western Asia	2,280	2,338	188	13	2,539	1,349	0.1	11.4	
Kazakhstan	1,841	1,959	148	7	2,114	1,125	0.1	14.8	
Uzbekistan	439	379	40	6	425	224	0.0	-3.2	
Oceania	106,402	102,768	5,798	1,396	109,962	47,891	3.4	3.3	
Australia	92,553	89,172	4,782	1,215	95,169	41,747	3.0	2.8	
Fiji	75	83	17	7	107	30	0.0	42.7	
New Zealand	13,774	13,513	999	174	14,686	6,114	0.5	6.6	
Other Asia & the Pacific	2,783	2,116	209	174	2,499	1,196	0.1	-10.2	
Europe	485,053	489,979	17,869	4,923	512,771	225,043	16.0	5.7	
Northern Europe	127,985	131,307	5,354	1,255	137,916	56,358	4.3	7.8	
Denmark	7,805	8,830	256	110	9,196	3,834	0.3	17.8	
Finland	4,779	4,562	180	74	4,816	1,799	0.2	0.8	
Iceland	683	502	12	4	518	217	0.0	-24.2	
Ireland	7,310	7,115	188	58	7,361	3,187	0.2	0.7	
Norway	6,842	6,870	183	42	7,095	3,015	0.2	3.7	
Sweden	11,547	11,433	385	135	11,953	4,622	0.4	3.5	
United Kingdom	89,019	91,995	4,150	832	96,977	39,684	3.0	8.9	
Western Europe	201,016	199,443	9,203	2,878	211,524	88,768	6.6	5.2	
Austria	6,394	6,200	137	29	6,366	2,636	0.2	-0.4	
Belgium	11,196	10,541	488	200	11,229	4,489	0.4	0.3	
France	93,575	94,697	5,859	1,721	102,277	43,166	3.2	9.3	
Germany	55,265	55,914	1,565	561	58,040	24,193	1.8	5.0	
Luxembourg	383	354	9	4	367	134	0.0	-4.2	
Monaco	88	50	4	1	55	20	0.0	-37.5	
Netherlands	20,508	18,830	610	240	19,680	8,391	0.6	-4.0	
Switzerland	13,607	12,857	531	122	13,510	5,739	0.4	-0.7	
Central / Eastern Europe	108,061	106,099	1,705	280	108,084	56,010	3.4	0.0	
Bulgaria	584	764	9	16	789	404	0.0	35.1	
Czech Republic	3,216	3,738	65	27	3,830	1,597	0.1	19.1	
Estonia	873	1,258	45	13	1,316	536	0.0	50.7	
Hungary	2,103	2,203	48	17	2,268	983	0.1	7.8	
Lithuania	1,076	1,075	12	2	1,089	545	0.0	1.2	
Poland	7,950	8,051	69	39	8,159	4,002	0.3	2.6	
Romania	925	1,212	75	9	1,296	646	0.0	40.1	
Russian Federation	85,939	82,051	1,233	121	83,405	44,370	2.6	-2.9	
Slovakia	1,568	1,597	58	28	1,683	740	0.1	7.3	
Ukraine	3,827	4,150	91	8	4,249	2,187	0.1	11.0	

International Tourist Arrivals to Cambodia by Country of Residence in January - September 2014

(by all mean of transportations)

Regions Country of Residence	2013		2014			share		change	
		Purpose of Visit			Total	Female	2014*	2014*/13	
		Holiday	Business	Other					(%)
GRAND TOTAL	3,057,211	3,028,693	150,354	21,011	3,200,058	1,460,018	100.0	4.7	
Southern Europe	45,645	51,398	1,467	400	53,265	23,028	1.7	16.7	
Croatia	509	514	16	7	537	255	0.0	5.5	
Greece	843	864	39	5	908	336	0.0	7.7	
Italy	17,981	20,831	620	161	21,612	8,752	0.7	20.2	
Portugal	2,801	2,896	83	19	2,998	1,336	0.1	7.0	
Serbia	435	511	19	2	532	258	0.0	22.3	
Slovenia	809	686	13	0	699	305	0.0	-13.6	
Spain	19,303	22,141	386	127	22,654	10,737	0.7	17.4	
Turkey	2,964	2,955	291	79	3,325	1,049	0.1	12.2	
Other Europe	2,346	1,732	140	110	1,982	879	0.1	-15.5	
Americas	188,835	185,203	9,161	4,068	198,432	87,277	6.2	5.1	
Argentina	4,594	4,537	37	32	4,606	2,282	0.1	0.3	
Brazil	4,723	6,603	94	32	6,729	3,305	0.2	42.5	
Canada	36,164	35,580	1,611	334	37,525	16,616	1.2	3.8	
Chile	3,143	4,064	92	17	4,173	2,116	0.1	32.8	
Colombia	1,259	1,497	23	17	1,537	771	0.0	22.1	
Costa Rica	219	265	5	5	275	125	0.0	25.6	
Ecuador	177	243	15	6	264	131	0.0	49.2	
Mexico	3,308	3,819	34	24	3,877	1,919	0.1	17.2	
Peru	488	569	24	13	606	299	0.0	24.2	
United States	132,714	126,193	7,143	3,504	136,840	58,771	4.3	3.1	
Uruguay	553	644	1	3	648	322	0.0	17.2	
Other Americas	1,493	1,189	82	81	1,352	620	0.0	-9.4	
Africa	4,115	3,538	362	163	4,063	1,641	0.1	-1.3	
Cameroon	107	85	7	12	104	24	0.0	-2.8	
Congo	41	24	4	10	38	11	0.0	-7.3	
Ghana	120	61	6	5	72	25	0.0	-40.0	
Kenya	208	150	12	32	194	98	0.0	-6.7	
Liberia	39	19	2	1	22	2	0.0	-43.6	
Nigeria	471	263	156	24	443	43	0.0	-5.9	
Sudan	36	40	4	16	60	15	0.0	66.7	
South Africa	2,701	2,628	145	27	2,800	1,279	0.1	3.7	
Uganda	44	36	5	3	44	10	0.0	0.0	
Other Africa	348	232	21	33	286	134	0.0	-17.8	
Middle East	8,283	8,274	270	121	8,665	3,036	0.3	4.6	
Egypt	229	203	27	10	240	52	0.0	4.8	
Iran	508	361	28	10	399	93	0.0	-21.5	
Iraq	111	74	2	1	77	17	0.0	-30.6	
Israel	5,690	6,235	180	52	6,467	2,662	0.2	13.7	
Kuwait	847	723	1	18	742	37	0.0	-12.4	
Oman	166	122	0	1	123	16	0.0	-25.9	
Palestine	83	54	1	0	55	13	0.0	-33.7	
Qatar	88	40	7	2	49	15	0.0	-44.3	
Saudi Arabia	115	106	8	1	115	11	0.0	0.0	
United Arab Emirates	123	86	0	0	86	5	0.0	-30.1	
Yemen	104	108	3	4	115	29	0.0	10.6	
Other Middle East	219	162	13	22	197	86	0.0	-10.0	

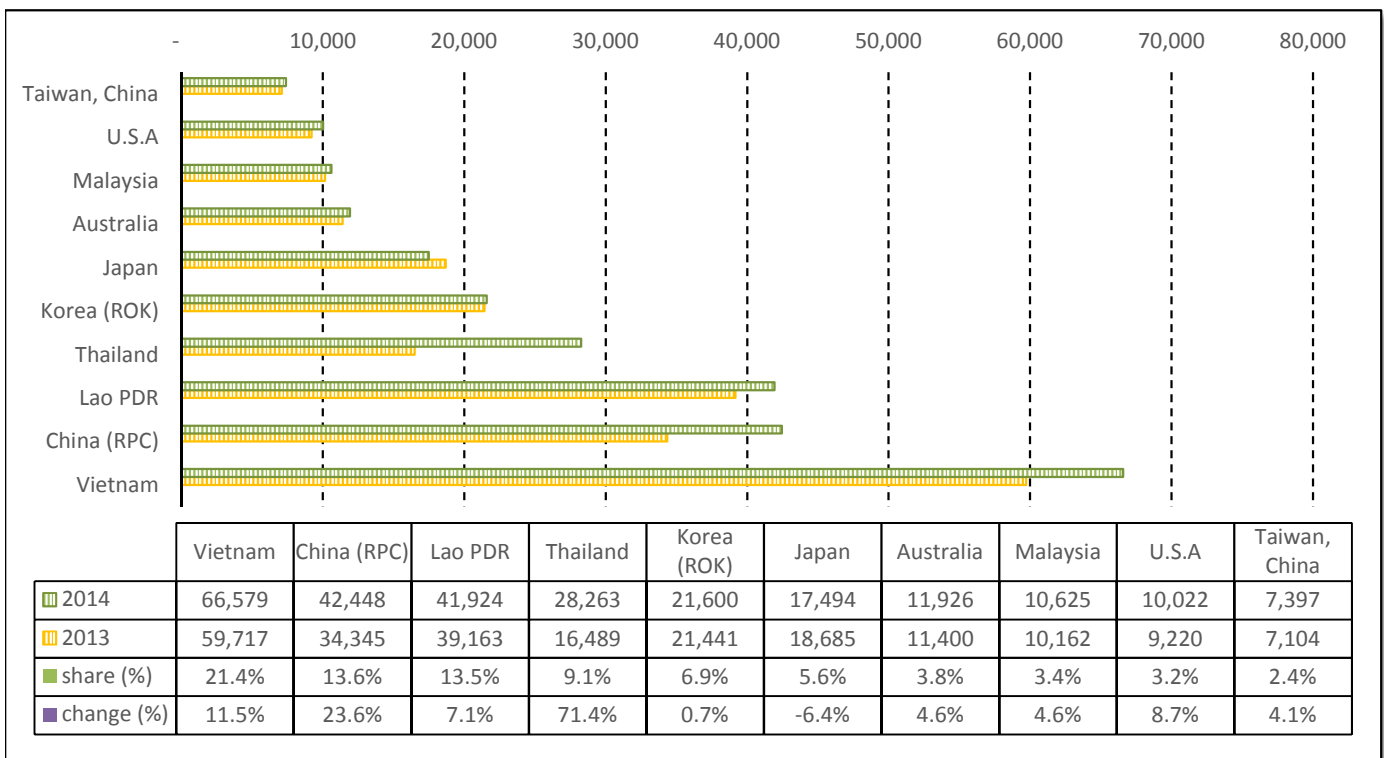
TOURISM STATISTICS REPORT IN SEPTEMBER 2014

I. INBOUND TOURISM

1. International tourist arrivals to Cambodia in September 2014

	Inbound tourism		share (%)		change (%)
	2013	2014	2013	2014	2014*/13
Air	129,458	148,464	45.6	47.7	14.7
Phnom Penh Int'l Airport (PNH)	59,018	66,614	20.8	21.4	12.9
Siem Reap Int'l Airport (REP)	70,440	81,850	24.8	26.3	16.2
Land and Water ways	154,329	162,924	54.4	52.3	5.6
Land	149,209	155,563	52.6	50.0	4.3
Waterway	5,120	7,361	1.8	2.4	43.8
Total	283,787	311,388	100.0	100.0	9.7

2. Top ten markets arrivals in September 2014



II. OUTBOUND TOURISM

Outbound tourism in September 2014

	Outbound tourism		change (%)
	2013	2014	2014*/13
Cambodian Outbound Tourists	65,923	86,031	30.5
International Tourists Departure	285,082	279,932	-1.8

III. INTERNAL TOURISM

Foreign visitor arrivals to the regions in September 2014

	Arrivals		share (%)		change (%)
	2013	2014	2013	2014	2014*/13
Phnom Penh & Surrounding	142,802	158,786	44.7	44.6	11.2
Siem Reap Angkor	140,985	152,602	44.1	42.8	8.2
Coastal Areas	31,615	40,746	9.9	11.4	28.9
Eco-tourism Areas	4,093	4,137	1.3	1.2	1.1
Total	319,495	356,271	100.0	100.0	11.5

International Tourist Arrivals to Cambodia by Country of Residence in September 2014

(by all mean of transportations)

Regions Country of Residence	2013	2014			Total	Female	share	change
		Purpose of Visit					(%)	(%)
		Holiday	Business	Other			2014*	2014*/13
GRAND TOTAL	283,787	289,759	19,265	2,364	311,388	123,079	100.0	9.7
Asia and the Pacific	239,404	249,889	15,854	1,430	267,173	104,815	85.8	11.6
ASEAN (South-East Asia)	141,755	155,014	4,862	752	160,628	59,394	51.6	13.3
Brunei Darussalam	36	39	5	4	48	22	0.0	33.3
Indonesia	2,048	2,077	495	22	2,594	637	0.8	26.7
Lao PDR	39,163	41,784	29	111	41,924	18,733	13.5	7.1
Malaysia	10,162	9,709	903	13	10,625	3,465	3.4	4.6
Myanmar	343	376	31	7	414	151	0.1	20.7
Philippines	9,367	4,461	774	81	5,316	2,943	1.7	-43.2
Singapore	4,430	4,551	301	13	4,865	1,572	1.6	9.8
Thailand	16,489	26,852	1,136	275	28,263	6,801	9.1	71.4
Vietnam	59,717	65,165	1,188	226	66,579	25,070	21.4	11.5
North-East Asia	82,043	79,490	9,807	418	89,715	38,444	28.8	9.4
China (RPC)	34,345	36,551	5,764	133	42,448	18,359	13.6	23.6
Hong Kong SAR	449	737	19	2	758	386	0.2	68.8
Japan	18,685	16,073	1,270	151	17,494	6,715	5.6	-6.4
Korea (ROK)	21,441	19,977	1,495	128	21,600	10,228	6.9	0.7
Mongolia	19	14	1	3	18	5	0.0	-5.3
Taiwan, China	7,104	6,138	1,258	1	7,397	2,751	2.4	4.1
Southern Asia	2,376	2,513	343	82	2,938	724	0.9	23.7
Afghanistan	9	6	0	1	7	1	0.0	-22.2
Bangladesh	131	162	26	16	204	18	0.1	55.7
Bhutan	11	9	0	1	10	2	0.0	-9.1
India	1,819	2,058	221	46	2,325	647	0.7	27.8
Nepal	115	107	24	12	143	19	0.0	24.3
Pakistan	148	60	31	2	93	10	0.0	-37.2
Sri Lanka	143	111	41	4	156	27	0.1	9.1
Western Asia	124	102	32	0	134	72	0.0	8.1
Kazakhstan	92	73	27	0	100	51	0.0	8.7
Uzbekistan	32	29	5	0	34	21	0.0	6.3
Oceania	12,922	12,535	735	136	13,406	6,018	4.3	3.7
Australia	11,400	11,209	597	120	11,926	5,420	3.8	4.6
Fiji	6	10	2	1	13	4	0.0	116.7
New Zealand	1,516	1,316	136	15	1,467	594	0.5	-3.2
Other Asia & the Pacific	184	235	75	42	352	163	0.1	91.3
Europe	30,493	26,628	2,153	455	29,236	12,183	9.4	-4.1
Northern Europe	8,430	7,284	652	119	8,055	3,157	2.6	-4.4
Denmark	371	270	17	12	299	91	0.1	-19.4
Finland	421	233	35	7	275	103	0.1	-34.7
Iceland	53	57	4	3	64	23	0.0	20.8
Ireland	544	354	14	7	375	167	0.1	-31.1
Norway	381	297	26	3	326	113	0.1	-14.4
Sweden	420	424	42	19	485	170	0.2	15.5
United Kingdom	6,240	5,649	514	68	6,231	2,490	2.0	-0.1
Western Europe	11,519	10,265	1,035	258	11,558	4,559	3.7	0.3
Austria	348	307	19	1	327	133	0.1	-6.0
Belgium	701	524	63	18	605	223	0.2	-13.7
France	4,736	4,198	674	129	5,001	1,935	1.6	5.6
Germany	3,818	3,720	164	71	3,955	1,618	1.3	3.6
Luxembourg	15	14	0	0	14	4	0.0	-6.7
Monaco	13	12	2	0	14	5	0.0	7.7
Netherlands	1,186	947	59	28	1,034	406	0.3	-12.8
Switzerland	702	543	54	11	608	235	0.2	-13.4
Central / Eastern Europe	6,582	4,470	216	17	4,703	2,381	1.5	-28.5
Bulgaria	36	37	2	1	40	21	0.0	11.1
Czech Republic	137	110	4	0	114	46	0.0	-16.8
Estonia	49	54	2	0	56	29	0.0	14.3
Hungary	85	165	12	2	179	69	0.1	110.6
Lithuania	39	39	4	0	43	21	0.0	10.3
Poland	389	425	15	3	443	222	0.1	13.9
Romania	75	71	8	0	79	38	0.0	5.3
Russian Federation	5,521	3,310	155	10	3,475	1,806	1.1	-37.1
Slovakia	53	75	4	1	80	36	0.0	50.9
Ukraine	198	184	10	0	194	93	0.1	-2.0

International Tourist Arrivals to Cambodia by Country of Residence in September 2014

(by all mean of transportations)

Regions Country of Residence	2013	2014			Total	Female	share	change
		Purpose of Visit					(%)	(%)
		Holiday	Business	Other			2014*	2014*/13
GRAND TOTAL	283,787	289,759	19,265	2,364	311,388	123,079	100.0	9.7
Southern Europe	3,815	4,457	215	49	4,721	2,010	1.5	23.7
Croatia	24	30	0	2	32	20	0.0	33.3
Greece	27	31	3	0	34	10	0.0	25.9
Italy	859	1,048	89	17	1,154	395	0.4	34.3
Portugal	205	250	11	2	263	102	0.1	28.3
Serbia	22	59	3	1	63	32	0.0	186.4
Slovenia	35	28	1	0	29	10	0.0	-17.1
Spain	2,447	2,793	67	17	2,877	1,368	0.9	17.6
Turkey	196	218	41	10	269	73	0.1	37.2
Other Europe	147	152	35	12	199	76	0.1	35.4
Americas	12,655	12,197	1,136	441	13,774	5,663	4.4	8.8
Argentina	253	172	5	2	179	87	0.1	-29.2
Brazil	308	368	8	4	380	167	0.1	23.4
Canada	1,905	1,815	221	34	2,070	840	0.7	8.7
Chile	227	224	5	6	235	111	0.1	3.5
Colombia	141	135	2	3	140	69	0.0	-0.7
Costa Rica	11	43	0	0	43	18	0.0	290.9
Ecuador	13	48	1	1	50	28	0.0	284.6
Mexico	350	412	4	1	417	207	0.1	19.1
Peru	68	51	3	1	55	27	0.0	-19.1
United States	9,220	8,766	879	377	10,022	4,026	3.2	8.7
Uruguay	27	18	0	2	20	11	0.0	-25.9
Other Americas	132	145	8	10	163	72	0.1	23.5
Africa	370	311	45	21	377	143	0.1	1.9
Cameroon	13	5	0	0	5	0	0.0	-61.5
Congo	4	5	0	1	6	3	0.0	50.0
Ghana	2	2	0	0	2	1	0.0	0.0
Kenya	15	16	0	11	27	15	0.0	80.0
Liberia	0	5	2	0	7	0	0.0	
Nigeria	54	41	18	0	59	6	0.0	9.3
Sudan	2	3	2	2	7	4	0.0	250.0
South Africa	261	207	19	2	228	100	0.1	-12.6
Uganda	1	5	1	0	6	2	0.0	500.0
Other Africa	18	22	3	5	30	12	0.0	66.7
Middle East	865	734	77	17	828	275	0.3	-4.3
Egypt	28	14	10	2	26	9	0.0	-7.1
Iran	48	31	6	1	38	8	0.0	-20.8
Iraq	5	10	1	0	11	3	0.0	120.0
Israel	637	502	50	6	558	225	0.2	-12.4
Kuwait	84	95	0	4	99	8	0.0	17.9
Oman	10	10	0	0	10	0	0.0	0.0
Palestine	3	4	0	0	4	1	0.0	33.3
Qatar	6	21	7	0	28	10	0.0	366.7
Saudi Arabia	10	6	0	0	6	0	0.0	-40.0
United Arab Emirates	7	19	0	0	19	1	0.0	171.4
Yemen	14	6	0	0	6	2	0.0	-57.1
Other Middle East	13	16	3	4	23	8	0.0	76.9

COMPILED BY:

1. Mr. Kong Sopheareak

Director
Statistics & Tourism Information Department
Fax: +855 23 885003
E-mail: kong@mot.gov.kh

2. Mr. Horth Vanny

Chief of Tourism Statistics Office
Compile and data analysis
Tel.: +855 12 827664