



KINGDOM OF CAMBODIA  
NATION RELIGION KING



# TOURISM STATISTICS REPORT

# August 2014

**MINISTRY OF TOURISM**

Statistics and Tourism Information Department

No. A3, Street 169, Sangkat Veal Vong, Khan 7 Makara, Phnom Penh, Cambodia.

Fax: +855 23 885003

E-mail: [kong@mot.gov.kh](mailto:kong@mot.gov.kh)

Web site: [www.mot.gov.kh](http://www.mot.gov.kh)

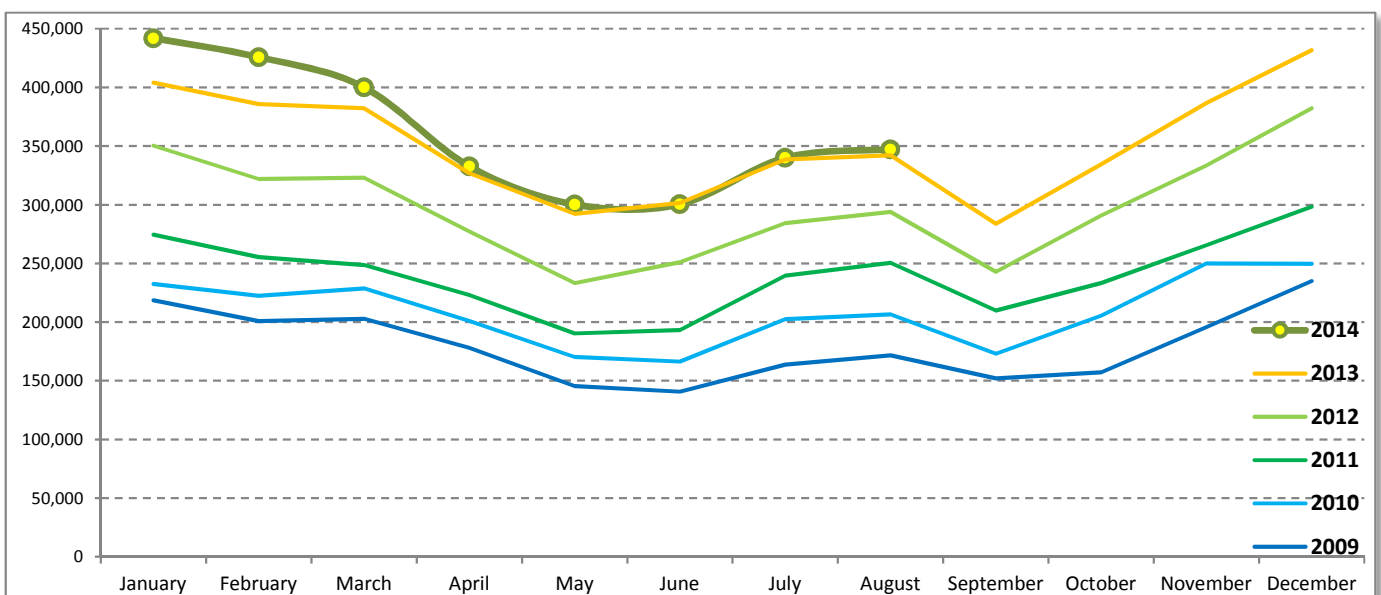
## Tourism Highlights

### International Tourist Arrivals, Average Length of Stay, Hotels Occupancy & Tourism Receipts 1993 - 2013

Years	Int'l Tourist Arrivals		Average Length	Hotels Occupancy	Tourism Receipts
	Number	Change (%)	of Stay (Days)	(%)	(Million US\$)
1993	118,183	-	N/A	N/A	N/A
1994	176,617	49.4	N/A	N/A	N/A
1995	219,680	24.4	8.00	37.00	100
1996	260,489	18.6	7.50	40.00	118
1997	218,843	-16.0	6.40	30.00	103
1998	286,524	30.9	5.20	40.00	166
1999	367,743	28.3	5.50	44.00	190
2000	466,365	26.8	5.50	45.00	228
2001	604,919	29.7	5.50	48.00	304
2002	786,524	30.0	5.80	50.00	379
2003	701,014	-10.9	5.50	50.00	347
2004	1,055,202	50.5	6.30	52.00	578
2005	1,421,615	34.7	6.30	52.00	832
2006	1,700,041	19.6	6.50	54.79	1,049
2007	2,015,128	18.5	6.50	54.79	1,400
2008	2,125,465	5.5	6.65	62.68	1,595
2009	2,161,577	1.7	6.45	63.57	1,561
2010	2,508,289	16.0	6.45	65.74	1,786
2011	2,881,862	14.9	6.50	66.15	1,912
2012	3,584,307	24.4	6.30	68.49	2,210
2013	4,210,165	17.5	6.75	69.53	2,547

### International tourist arrivals to Cambodia

Destination	Months	2009	2010	2011	2012	2013	2014	change (%) 2014*/13
<b>Cambodia</b>	<b>Q1</b>	<b>622,288</b>	<b>683,692</b>	<b>778,467</b>	<b>995,210</b>	<b>1,172,072</b>	<b>1,267,922</b>	<b>8.2</b>
<i>International tourist arrivals by all means of transportations</i>	January	218,691	232,590	274,471	350,257	404,106	442,045	9.4
	February	200,789	222,354	255,499	321,870	385,760	425,801	10.4
	March	202,808	228,748	248,497	323,083	382,206	400,076	4.7
	<b>Q2</b>	<b>464,230</b>	<b>537,464</b>	<b>606,562</b>	<b>761,442</b>	<b>920,527</b>	<b>933,446</b>	<b>1.4</b>
	April	177,955	200,965	223,032	277,304	327,000	332,690	1.7
	May	145,564	170,164	190,258	233,220	292,115	300,302	2.8
	June	140,711	166,335	193,272	250,918	301,412	300,454	-0.3
	<b>Q3</b>	<b>487,422</b>	<b>582,024</b>	<b>699,760</b>	<b>820,888</b>	<b>964,612</b>	<b>687,302</b>	
	July	163,817	202,349	239,527	284,282	338,761	340,091	0.4
	August	171,668	206,563	250,429	293,859	342,064	347,211	1.5
	September	151,937	173,112	209,804	242,747	283,787		
	<b>Q4</b>	<b>587,637</b>	<b>705,109</b>	<b>797,073</b>	<b>1,006,767</b>	<b>1,152,954</b>	<b>0</b>	
	October	157,105	205,515	233,190	290,959	334,410		
	November	195,570	249,892	265,539	333,482	386,737		
	December	234,962	249,702	298,344	382,326	431,807		
	<b>Total</b>	<b>2,161,577</b>	<b>2,508,289</b>	<b>2,881,862</b>	<b>3,584,307</b>	<b>4,210,165</b>	<b>2,888,670</b>	<b>4.2</b>



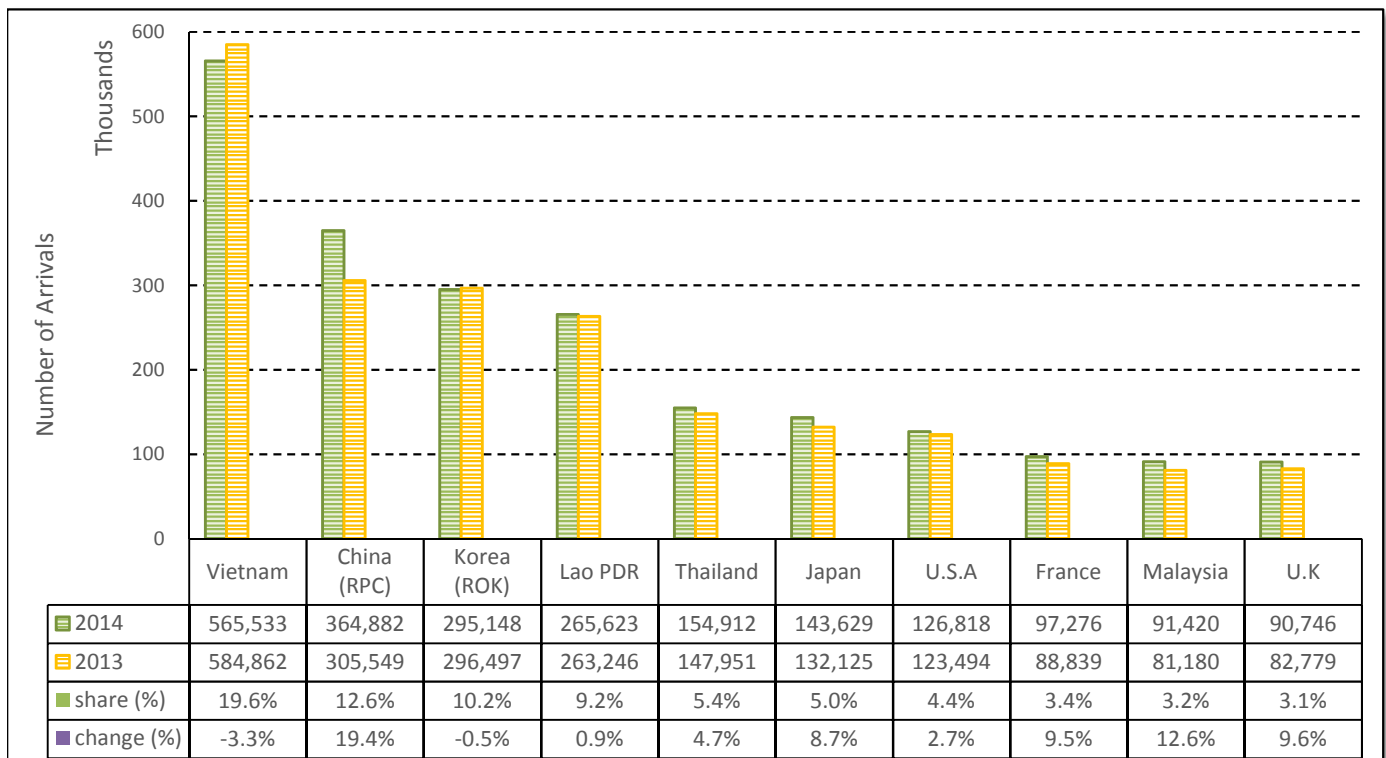
# TOURISM STATISTICS REPORT IN THE FIRST EIGHT MONTHS 2014

## I. INBOUND TOURISM

### 1. International tourist arrivals to Cambodia in January - August 2014

	Inbound tourism		share (%)		change (%)
	2013	2014	2013	2014	2014*/13
<b>Air</b>	<b>1,307,769</b>	<b>1,486,192</b>	<b>47.2</b>	<b>51.4</b>	<b>13.6</b>
Phnom Penh Int'l Airport (PNH)	541,613	596,128	19.5	20.6	10.1
Siem Reap Int'l Airport (REP)	766,156	890,064	27.6	30.8	16.2
<b>Land and Water ways</b>	<b>1,465,655</b>	<b>1,402,478</b>	<b>52.8</b>	<b>48.6</b>	<b>-4.3</b>
Land	1,419,430	1,343,808	51.2	46.5	-5.3
Waterway	46,225	58,670	1.7	2.0	26.9
<b>Total</b>	<b>2,773,424</b>	<b>2,888,670</b>	<b>100.0</b>	<b>100.0</b>	<b>4.2</b>

### 2. Top ten markets arrivals in January - August 2014



## II. OUTBOUND TOURISM

### Outbound tourism in January - August 2014

	Outbound tourism		change (%)
	2013	2014	2014*/13
Cambodian Outbound Tourists	578,470	621,548	7.4
International Tourists Departure	2,782,522	2,863,573	2.9

## III. INTERNAL TOURISM

### Foreign visitor arrivals to the regions in January - August 2014

	Arrivals		share (%)		change (%)
	2013	2014	2013	2014	2014*/13
Phnom Penh & Surrounding	1,340,486	1,300,091	42.1	39.1	-3.0
Siem Reap Angkor	1,432,938	1,588,579	45.0	47.8	10.9
Coastal Areas	368,229	386,022	11.6	11.6	4.8
Eco-tourism Areas	40,944	47,512	1.3	1.4	16.0
<b>Total</b>	<b>3,182,597</b>	<b>3,322,204</b>	<b>100.0</b>	<b>100.0</b>	<b>4.4</b>

## International Tourist Arrivals to Cambodia by Country of Residence in January - August 2014

(by all mean of transportations)

Regions Country of Residence	2013		2014			share		change	
			Purpose of Visit			Total	Female	2014*	2014*/13
			Holiday	Business	Other				
<b>GRAND TOTAL</b>	<b>2,773,424</b>	<b>2,738,934</b>	<b>131,089</b>	<b>18,647</b>	<b>2,888,670</b>	<b>1,336,939</b>	<b>100.0</b>	<b>4.2</b>	
<b>Asia and the Pacific</b>	<b>2,131,521</b>	<b>2,091,810</b>	<b>106,838</b>	<b>10,306</b>	<b>2,208,954</b>	<b>1,038,206</b>	<b>76.5</b>	<b>3.6</b>	
<b>ASEAN (South-East Asia)</b>	<b>1,211,706</b>	<b>1,174,570</b>	<b>32,542</b>	<b>4,778</b>	<b>1,211,890</b>	<b>589,545</b>	<b>42.0</b>	<b>0.0</b>	
Brunei Darussalam	451	590	11	29	630	272	0.0	39.7	
Indonesia	18,462	19,433	3,812	200	23,445	6,573	0.8	27.0	
Lao PDR	263,246	265,143	120	360	265,623	170,445	9.2	0.9	
Malaysia	81,180	85,420	5,878	122	91,420	30,980	3.2	12.6	
Myanmar	3,432	3,460	320	112	3,892	1,619	0.1	13.4	
Philippines	77,808	60,982	5,145	485	66,612	38,652	2.3	-14.4	
Singapore	34,314	37,807	1,883	133	39,823	13,511	1.4	16.1	
Thailand	147,951	145,104	7,975	1,833	154,912	62,331	5.4	4.7	
Vietnam	584,862	556,631	7,398	1,504	565,533	265,162	19.6	-3.3	
<b>North-East Asia</b>	<b>802,796</b>	<b>804,247</b>	<b>66,290</b>	<b>3,473</b>	<b>874,010</b>	<b>398,162</b>	<b>30.3</b>	<b>8.9</b>	
China (RPC)	305,549	326,019	37,657	1,206	364,882	167,555	12.6	19.4	
Hong Kong SAR	4,306	4,816	142	9	4,967	2,355	0.2	15.4	
Japan	132,125	132,688	9,727	1,214	143,629	57,867	5.0	8.7	
Korea (ROK)	296,497	283,807	10,330	1,011	295,148	143,701	10.2	-0.5	
Mongolia	255	256	10	16	282	137	0.0	10.6	
Taiwan, China	64,064	56,661	8,424	17	65,102	26,547	2.3	1.6	
<b>Southern Asia</b>	<b>18,784</b>	<b>18,643</b>	<b>2,653</b>	<b>650</b>	<b>21,946</b>	<b>6,316</b>	<b>0.8</b>	<b>16.8</b>	
Afghanistan	228	167	8	11	186	50	0.0	-18.4	
Bangladesh	1,175	883	179	120	1,182	171	0.0	0.6	
Bhutan	65	50	1	15	66	26	0.0	1.5	
India	14,614	15,380	1,772	316	17,468	5,405	0.6	19.5	
Nepal	938	876	146	57	1,079	234	0.0	15.0	
Pakistan	709	493	230	69	792	136	0.0	11.7	
Srilanka	1,055	794	317	62	1,173	294	0.0	11.2	
<b>Western Asia</b>	<b>2,156</b>	<b>2,236</b>	<b>156</b>	<b>13</b>	<b>2,405</b>	<b>1,277</b>	<b>0.1</b>	<b>11.5</b>	
Kazakhstan	1,749	1,886	121	7	2,014	1,074	0.1	15.2	
Uzbekistan	407	350	35	6	391	203	0.0	-3.9	
<b>Oceania</b>	<b>93,480</b>	<b>90,233</b>	<b>5,063</b>	<b>1,260</b>	<b>96,556</b>	<b>41,873</b>	<b>3.3</b>	<b>3.3</b>	
Australia	81,153	77,963	4,185	1,095	83,243	36,327	2.9	2.6	
Fiji	69	73	15	6	94	26	0.0	36.2	
New Zealand	12,258	12,197	863	159	13,219	5,520	0.5	7.8	
Other Asia & the Pacific	2,599	1,881	134	132	2,147	1,033	0.1	-17.4	
<b>Europe</b>	<b>454,560</b>	<b>463,351</b>	<b>15,716</b>	<b>4,468</b>	<b>483,535</b>	<b>212,860</b>	<b>16.7</b>	<b>6.4</b>	
<b>Northern Europe</b>	<b>119,555</b>	<b>124,023</b>	<b>4,702</b>	<b>1,136</b>	<b>129,861</b>	<b>53,201</b>	<b>4.5</b>	<b>8.6</b>	
Denmark	7,434	8,560	239	98	8,897	3,743	0.3	19.7	
Finland	4,358	4,329	145	67	4,541	1,696	0.2	4.2	
Iceland	630	445	8	1	454	194	0.0	-27.9	
Ireland	6,766	6,761	174	51	6,986	3,020	0.2	3.3	
Norway	6,461	6,573	157	39	6,769	2,902	0.2	4.8	
Sweden	11,127	11,009	343	116	11,468	4,452	0.4	3.1	
United Kingdom	82,779	86,346	3,636	764	90,746	37,194	3.1	9.6	
<b>Western Europe</b>	<b>189,497</b>	<b>189,178</b>	<b>8,168</b>	<b>2,620</b>	<b>199,966</b>	<b>84,209</b>	<b>6.9</b>	<b>5.5</b>	
Austria	6,046	5,893	118	28	6,039	2,503	0.2	-0.1	
Belgium	10,495	10,017	425	182	10,624	4,266	0.4	1.2	
France	88,839	90,499	5,185	1,592	97,276	41,231	3.4	9.5	
Germany	51,447	52,194	1,401	490	54,085	22,575	1.9	5.1	
Luxembourg	368	340	9	4	353	130	0.0	-4.1	
Monaco	75	38	2	1	41	15	0.0	-45.3	
Netherlands	19,322	17,883	551	212	18,646	7,985	0.6	-3.5	
Switzerland	12,905	12,314	477	111	12,902	5,504	0.4	0.0	
<b>Central / Eastern Europe</b>	<b>101,479</b>	<b>101,629</b>	<b>1,489</b>	<b>263</b>	<b>103,381</b>	<b>53,629</b>	<b>3.6</b>	<b>1.9</b>	
Bulgaria	548	727	7	15	749	383	0.0	36.7	
Czech Republic	3,079	3,628	61	27	3,716	1,551	0.1	20.7	
Estonia	824	1,204	43	13	1,260	507	0.0	52.9	
Hungary	2,018	2,038	36	15	2,089	914	0.1	3.5	
Lithuania	1,037	1,036	8	2	1,046	524	0.0	0.9	
Poland	7,561	7,626	54	36	7,716	3,780	0.3	2.0	
Romania	850	1,141	67	9	1,217	608	0.0	43.2	
Russian Federation	80,418	78,741	1,078	111	79,930	42,564	2.8	-0.6	
Slovakia	1,515	1,522	54	27	1,603	704	0.1	5.8	
Ukraine	3,629	3,966	81	8	4,055	2,094	0.1	11.7	

## International Tourist Arrivals to Cambodia by Country of Residence in January - August 2014

(by all mean of transportations)

Regions Country of Residence	2013		2014			share		change	
			Purpose of Visit			Total	Female	(%)	(%)
			Holiday	Business	Other			2014*	2014*/13
<b>GRAND TOTAL</b>	<b>2,773,424</b>	<b>2,738,934</b>	<b>131,089</b>	<b>18,647</b>	<b>2,888,670</b>	<b>1,336,939</b>	<b>100.0</b>	<b>4.2</b>	
<b>Southern Europe</b>	<b>41,830</b>	<b>46,941</b>	<b>1,252</b>	<b>351</b>	<b>48,544</b>	<b>21,018</b>	<b>1.7</b>	<b>16.1</b>	
Croatia	485	484	16	5	505	235	0.0	4.1	
Greece	816	833	36	5	874	326	0.0	7.1	
Italy	17,122	19,783	531	144	20,458	8,357	0.7	19.5	
Portugal	2,596	2,646	72	17	2,735	1,234	0.1	5.4	
Serbia	413	452	16	1	469	226	0.0	13.6	
Slovenia	774	658	12	0	670	295	0.0	-13.4	
Spain	16,856	19,348	319	110	19,777	9,369	0.7	17.3	
Turkey	2,768	2,737	250	69	3,056	976	0.1	10.4	
Other Europe	2,199	1,580	105	98	1,783	803	0.1	-18.9	
<b>Americas</b>	<b>176,180</b>	<b>173,006</b>	<b>8,025</b>	<b>3,627</b>	<b>184,658</b>	<b>81,614</b>	<b>6.4</b>	<b>4.8</b>	
Argentina	4,341	4,365	32	30	4,427	2,195	0.2	2.0	
Brazil	4,415	6,235	86	28	6,349	3,138	0.2	43.8	
Canada	34,259	33,765	1,390	300	35,455	15,776	1.2	3.5	
Chile	2,916	3,840	87	11	3,938	2,005	0.1	35.0	
Colombia	1,118	1,362	21	14	1,397	702	0.0	25.0	
Costa Rica	208	222	5	5	232	107	0.0	11.5	
Ecuador	164	195	14	5	214	103	0.0	30.5	
Mexico	2,958	3,407	30	23	3,460	1,712	0.1	17.0	
Peru	420	518	21	12	551	272	0.0	31.2	
United States	123,494	117,427	6,264	3,127	126,818	54,745	4.4	2.7	
Uruguay	526	626	1	1	628	311	0.0	19.4	
Other Americas	1,361	1,044	74	71	1,189	548	0.0	-12.6	
<b>Africa</b>	<b>3,745</b>	<b>3,227</b>	<b>317</b>	<b>142</b>	<b>3,686</b>	<b>1,498</b>	<b>0.1</b>	<b>-1.6</b>	
Cameroon	94	80	7	12	99	24	0.0	5.3	
Congo	37	19	4	9	32	8	0.0	-13.5	
Ghana	118	59	6	5	70	24	0.0	-40.7	
Kenya	193	134	12	21	167	83	0.0	-13.5	
Liberia	39	14	0	1	15	2	0.0	-61.5	
Nigeria	417	222	138	24	384	37	0.0	-7.9	
Sudan	34	37	2	14	53	11	0.0	55.9	
South Africa	2,440	2,421	126	25	2,572	1,179	0.1	5.4	
Uganda	43	31	4	3	38	8	0.0	-11.6	
Other Africa	330	210	18	28	256	122	0.0	-22.4	
<b>Middle East</b>	<b>7,418</b>	<b>7,540</b>	<b>193</b>	<b>104</b>	<b>7,837</b>	<b>2,761</b>	<b>0.3</b>	<b>5.6</b>	
Egypt	201	189	17	8	214	43	0.0	6.5	
Iran	460	330	22	9	361	85	0.0	-21.5	
Iraq	106	64	1	1	66	14	0.0	-37.7	
Israel	5,053	5,733	130	46	5,909	2,437	0.2	16.9	
Kuwait	763	628	1	14	643	29	0.0	-15.7	
Oman	156	112	0	1	113	16	0.0	-27.6	
Palestine	80	50	1	0	51	12	0.0	-36.3	
Qatar	82	19	0	2	21	5	0.0	-74.4	
Saudi Arabia	105	100	8	1	109	11	0.0	3.8	
United Arab Emirates	116	67	0	0	67	4	0.0	-42.2	
Yemen	90	102	3	4	109	27	0.0	21.1	
Other Middle East	206	146	10	18	174	78	0.0	-15.5	

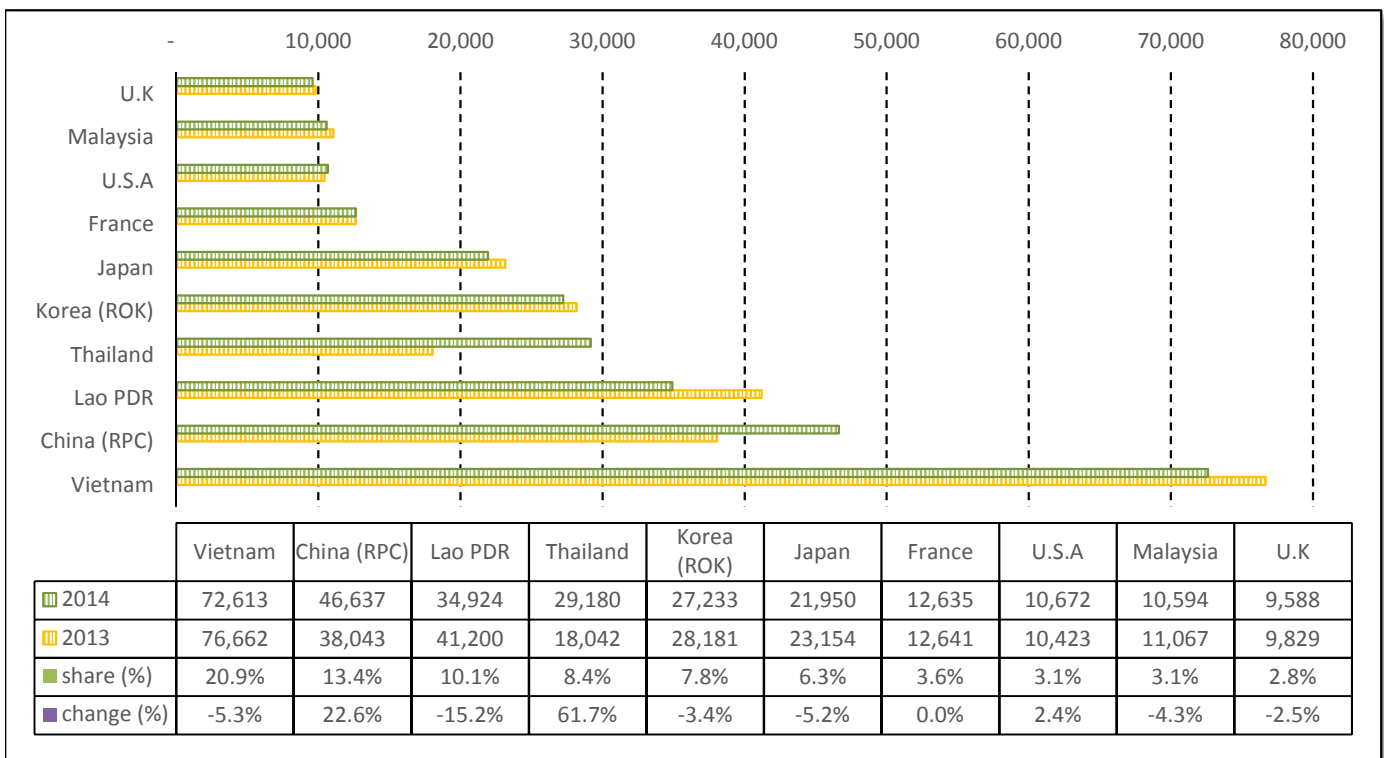
# TOURISM STATISTICS REPORT IN AUGUST 2014

## I. INBOUND TOURISM

### 1. International tourist arrivals to Cambodia in August 2014

	Inbound tourism		share (%)		change (%)
	2013	2014	2013	2014	2014*/13
<b>Air</b>	<b>153,905</b>	<b>179,657</b>	<b>45.0</b>	<b>51.7</b>	<b>16.7</b>
Phnom Penh Int'l Airport (PNH)	66,865	73,895	19.5	21.3	10.5
Siem Reap Int'l Airport (REP)	87,040	105,762	25.4	30.5	21.5
<b>Land and Water ways</b>	<b>188,159</b>	<b>167,554</b>	<b>55.0</b>	<b>48.3</b>	<b>-11.0</b>
Land	183,315	160,159	53.6	46.1	-12.6
Waterway	4,844	7,395	1.4	2.1	52.7
<b>Total</b>	<b>342,064</b>	<b>347,211</b>	<b>100.0</b>	<b>100.0</b>	<b>1.5</b>

### 2. Top ten markets arrivals in August 2014



## II. OUTBOUND TOURISM

### Outbound tourism in August 2014

	Outbound tourism		change (%)
	2013	2014	2014*/13
Cambodian Outbound Tourists	69,420	81,405	17.3
International Tourists Departure	346,436	340,519	-1.7

## III. INTERNAL TOURISM

### Foreign visitor arrivals to the regions in August 2014

	Arrivals		share (%)		change (%)
	2013	2014	2013	2014	2014*/13
Phnom Penh & Surrounding	190,615	164,071	50.4	41.4	-13.9
Siem Reap Angkor	151,449	183,140	40.1	46.2	20.9
Coastal Areas	31,718	43,816	8.4	11.0	38.1
Eco-tourism Areas	4,160	5,499	1.1	1.4	32.2
<b>Total</b>	<b>377,942</b>	<b>396,526</b>	<b>100.0</b>	<b>100.0</b>	<b>4.9</b>

## International Tourist Arrivals to Cambodia by Country of Residence in August 2014

(by all mean of transportations)

Regions Country of Residence	2013	2014			Total	Female	share	change
		Purpose of Visit					(%)	(%)
		Holiday	Business	Other			2014*	2014*/13
<b>GRAND TOTAL</b>	<b>342,064</b>	<b>328,482</b>	<b>16,263</b>	<b>2,466</b>	<b>347,211</b>	<b>152,442</b>	<b>100.0</b>	<b>1.5</b>
<b>Asia and the Pacific</b>	<b>273,540</b>	<b>264,559</b>	<b>13,179</b>	<b>1,267</b>	<b>279,005</b>	<b>122,730</b>	<b>80.4</b>	<b>2.0</b>
<b>ASEAN (South-East Asia)</b>	<b>164,470</b>	<b>156,283</b>	<b>4,096</b>	<b>550</b>	<b>160,929</b>	<b>69,474</b>	<b>46.3</b>	<b>-2.2</b>
Brunei Darussalam	58	78	0	4	82	37	0.0	41.4
Indonesia	2,867	2,370	554	20	2,944	796	0.8	2.7
Lao PDR	41,200	34,875	11	38	34,924	20,835	10.1	-15.2
Malaysia	11,067	9,834	757	3	10,594	3,316	3.1	-4.3
Myanmar	347	410	20	9	439	198	0.1	26.5
Philippines	10,160	4,840	553	65	5,458	2,992	1.6	-46.3
Singapore	4,067	4,427	244	24	4,695	1,483	1.4	15.4
Thailand	18,042	27,949	1,036	195	29,180	11,446	8.4	61.7
Vietnam	76,662	71,500	921	192	72,613	28,371	20.9	-5.3
<b>North-East Asia</b>	<b>97,113</b>	<b>96,754</b>	<b>7,949</b>	<b>384</b>	<b>105,087</b>	<b>48,188</b>	<b>30.3</b>	<b>8.2</b>
China (RPC)	38,043	42,252	4,263	122	46,637	21,164	13.4	22.6
Hong Kong SAR	400	711	22	1	734	338	0.2	83.5
Japan	23,154	20,475	1,304	171	21,950	9,352	6.3	-5.2
Korea (ROK)	28,181	25,815	1,330	88	27,233	13,871	7.8	-3.4
Mongolia	13	45	0	1	46	17	0.0	253.8
Taiwan, China	7,322	7,456	1,030	1	8,487	3,446	2.4	15.9
<b>Southern Asia</b>	<b>2,652</b>	<b>2,585</b>	<b>385</b>	<b>124</b>	<b>3,094</b>	<b>920</b>	<b>0.9</b>	<b>16.7</b>
Afghanistan	14	2	1	6	9	2	0.0	-35.7
Bangladesh	149	202	27	24	253	24	0.1	69.8
Bhutan	12	4	1	0	5	2	0.0	-58.3
India	2,067	2,041	268	64	2,373	796	0.7	14.8
Nepal	113	127	12	3	142	26	0.0	25.7
Pakistan	105	69	29	17	115	15	0.0	9.5
Srilanka	192	140	47	10	197	55	0.1	2.6
<b>Western Asia</b>	<b>176</b>	<b>144</b>	<b>28</b>	<b>0</b>	<b>172</b>	<b>88</b>	<b>0.0</b>	<b>-2.3</b>
Kazakhstan	131	100	24	0	124	62	0.0	-5.3
Uzbekistan	45	44	4	0	48	26	0.0	6.7
<b>Oceania</b>	<b>8,942</b>	<b>8,532</b>	<b>695</b>	<b>178</b>	<b>9,405</b>	<b>3,889</b>	<b>2.7</b>	<b>5.2</b>
Australia	7,635	7,255	574	160	7,989	3,310	2.3	4.6
Fiji	5	10	0	1	11	2	0.0	120.0
New Zealand	1,302	1,267	121	17	1,405	577	0.4	7.9
Other Asia & the Pacific	187	261	26	31	318	171	0.1	70.1
<b>Europe</b>	<b>53,146</b>	<b>49,666</b>	<b>2,035</b>	<b>675</b>	<b>52,376</b>	<b>23,178</b>	<b>15.1</b>	<b>-1.4</b>
<b>Northern Europe</b>	<b>12,197</b>	<b>11,140</b>	<b>522</b>	<b>159</b>	<b>11,821</b>	<b>4,872</b>	<b>3.4</b>	<b>-3.1</b>
Denmark	471	404	19	17	440	150	0.1	-6.6
Finland	176	184	20	16	220	78	0.1	25.0
Iceland	143	24	1	0	25	11	0.0	-82.5
Ireland	786	762	27	6	795	369	0.2	1.1
Norway	367	289	24	6	319	95	0.1	-13.1
Sweden	425	377	37	20	434	142	0.1	2.1
United Kingdom	9,829	9,100	394	94	9,588	4,027	2.8	-2.5
<b>Western Europe</b>	<b>22,673</b>	<b>21,131</b>	<b>1,066</b>	<b>417</b>	<b>22,614</b>	<b>9,752</b>	<b>6.5</b>	<b>-0.3</b>
Austria	609	490	9	2	501	209	0.1	-17.7
Belgium	1,123	1,019	50	40	1,109	468	0.3	-1.2
France	12,641	11,657	698	280	12,635	5,575	3.6	0.0
Germany	4,734	4,893	193	65	5,151	2,085	1.5	8.8
Luxembourg	62	62	1	0	63	25	0.0	1.6
Monaco	12	2	0	0	2	0	0.0	-83.3
Netherlands	2,450	2,191	60	20	2,271	1,006	0.7	-7.3
Switzerland	1,042	817	55	10	882	384	0.3	-15.4
<b>Central / Eastern Europe</b>	<b>6,880</b>	<b>4,449</b>	<b>218</b>	<b>36</b>	<b>4,703</b>	<b>2,381</b>	<b>1.4</b>	<b>-31.6</b>
Bulgaria	49	31	1	3	35	18	0.0	-28.6
Czech Republic	186	238	5	4	247	121	0.1	32.8
Estonia	49	192	14	2	208	93	0.1	324.5
Hungary	104	102	6	0	108	42	0.0	3.8
Lithuania	34	46	0	0	46	24	0.0	35.3
Poland	451	447	5	5	457	218	0.1	1.3
Romania	72	95	10	0	105	50	0.0	45.8
Russian Federation	5,664	3,024	163	18	3,205	1,681	0.9	-43.4
Slovakia	89	65	8	1	74	36	0.0	-16.9
Ukraine	182	209	6	3	218	98	0.1	19.8

Source: Statistics and Tourism Information Department, MOT

## International Tourist Arrivals to Cambodia by Country of Residence in August 2014

(by all mean of transportations)

Regions Country of Residence	2013	2014			Total	Female	share	change
		Purpose of Visit					(%)	(%)
		Holiday	Business	Other			2014*	2014*/13
<b>GRAND TOTAL</b>	<b>342,064</b>	<b>328,482</b>	<b>16,263</b>	<b>2,466</b>	<b>347,211</b>	<b>152,442</b>	<b>100.0</b>	<b>1.5</b>
<b>Southern Europe</b>	<b>11,250</b>	<b>12,739</b>	<b>206</b>	<b>42</b>	<b>12,987</b>	<b>6,076</b>	<b>3.7</b>	<b>15.4</b>
Croatia	42	41	3	1	45	19	0.0	7.1
Greece	181	147	7	0	154	70	0.0	-14.9
Italy	4,254	4,791	65	15	4,871	2,173	1.4	14.5
Portugal	537	663	9	2	674	304	0.2	25.5
Serbia	62	104	1	0	105	49	0.0	69.4
Slovenia	41	32	2	0	34	14	0.0	-17.1
Spain	5,826	6,781	42	10	6,833	3,364	2.0	17.3
Turkey	307	180	77	14	271	83	0.1	-11.7
Other Europe	146	207	23	21	251	97	0.1	71.9
<b>Americas</b>	<b>14,222</b>	<b>13,209</b>	<b>989</b>	<b>484</b>	<b>14,682</b>	<b>6,130</b>	<b>4.2</b>	<b>3.2</b>
Argentina	229	168	4	11	183	86	0.1	-20.1
Brazil	325	420	9	5	434	196	0.1	33.5
Canada	2,420	1,996	170	29	2,195	916	0.6	-9.3
Chile	247	312	40	0	352	157	0.1	42.5
Colombia	116	159	3	1	163	88	0.0	40.5
Costa Rica	13	27	0	1	28	11	0.0	115.4
Ecuador	20	19	2	1	22	9	0.0	10.0
Mexico	261	331	3	1	335	159	0.1	28.4
Peru	45	77	1	2	80	39	0.0	77.8
United States	10,423	9,517	739	416	10,672	4,375	3.1	2.4
Uruguay	5	18	0	0	18	7	0.0	260.0
Other Americas	118	165	18	17	200	87	0.1	69.5
<b>Africa</b>	<b>368</b>	<b>382</b>	<b>32</b>	<b>31</b>	<b>445</b>	<b>171</b>	<b>0.1</b>	<b>20.9</b>
Cameroon	8	11	0	3	14	3	0.0	75.0
Congo	2	2	0	3	5	0	0.0	150.0
Ghana	12	5	1	0	6	2	0.0	-50.0
Kenya	14	13	3	6	22	10	0.0	57.1
Liberia	13	0	0	0	0	0	0.0	-100.0
Nigeria	51	30	13	3	46	2	0.0	-9.8
Sudan	2	3	1	7	11	5	0.0	450.0
South Africa	240	289	11	2	302	133	0.1	25.8
Uganda	1	5	1	0	6	1	0.0	500.0
Other Africa	25	24	2	7	33	15	0.0	32.0
<b>Middle East</b>	<b>788</b>	<b>666</b>	<b>28</b>	<b>9</b>	<b>703</b>	<b>233</b>	<b>0.2</b>	<b>-10.8</b>
Egypt	17	25	8	2	35	8	0.0	105.9
Iran	58	31	4	0	35	11	0.0	-39.7
Iraq	13	20	0	0	20	7	0.0	53.8
Israel	473	411	14	2	427	183	0.1	-9.7
Kuwait	106	111	0	0	111	5	0.0	4.7
Oman	19	13	0	0	13	3	0.0	-31.6
Palestine	17	5	0	0	5	0	0.0	-70.6
Qatar	3	2	0	1	3	0	0.0	0.0
Saudi Arabia	8	13	0	0	13	4	0.0	62.5
United Arab Emirates	45	13	0	0	13	1	0.0	-71.1
Yemen	8	4	0	1	5	0	0.0	-37.5
Other Middle East	21	18	2	3	23	11	0.0	9.5



**COMPILED BY:**

1. Mr. Kong Sopheareak

Director  
Statistics & Tourism Information Department  
Fax: +855 23 885003  
E-mail: kong@mot.gov.kh

2. Mr. Horth Vanny

Chief of Tourism Statistics Office  
Compile and data analysis  
Tel.: +855 12 827664