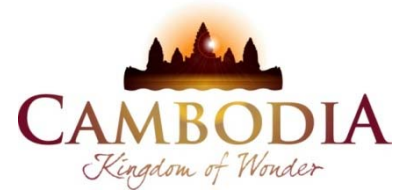




KINGDOM OF CAMBODIA
NATION RELIGION KING



TOURISM STATISTICS REPORT

July 2014

MINISTRY OF TOURISM

Statistics and Tourism Information Department

No. A3, Street 169, Sangkat Veal Vong, Khan 7 Makara, Phnom Penh, Cambodia.

Fax: +855 23 885003

E-mail: kong@mot.gov.kh

Web site: www.mot.gov.kh

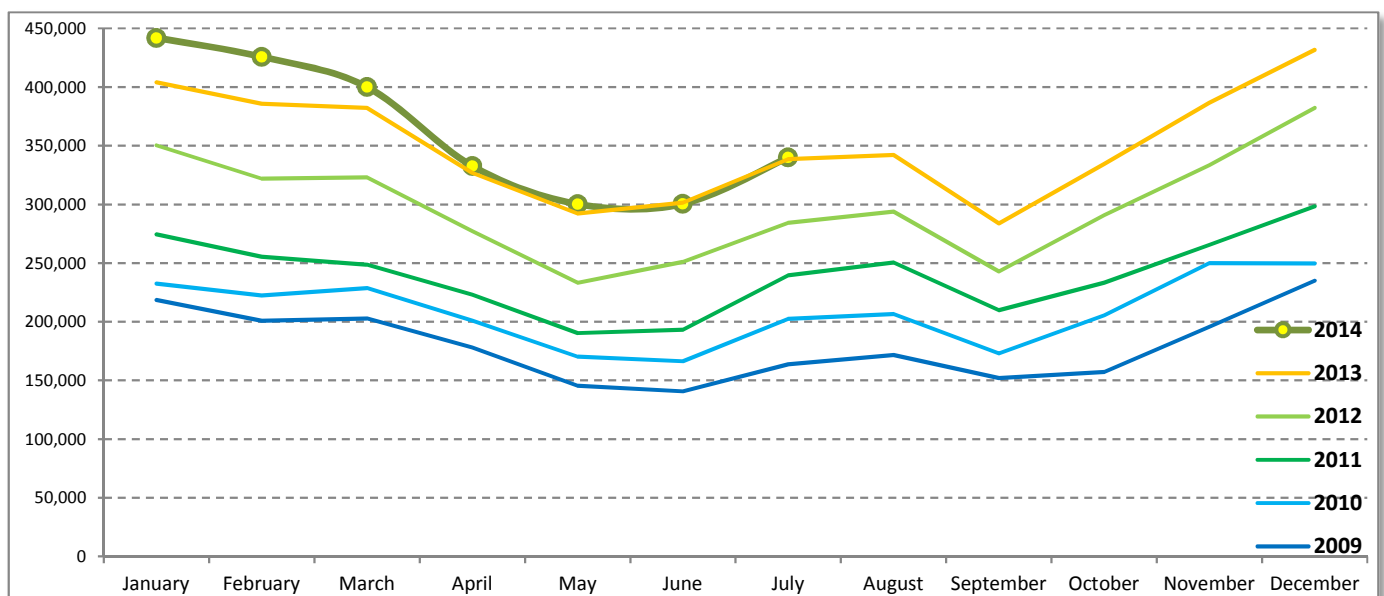
Tourism Highlights

International Tourist Arrivals, Average Length of Stay, Hotels Occupancy & Tourism Receipts 1993 - 2013

Years	Int'l Tourist Arrivals		Average Length	Hotels Occupancy	Tourism Receipts
	Number	Change (%)	of Stay (Days)	(%)	(Million US\$)
1993	118,183	-	N/A	N/A	N/A
1994	176,617	49.4	N/A	N/A	N/A
1995	219,680	24.4	8.00	37.00	100
1996	260,489	18.6	7.50	40.00	118
1997	218,843	-16.0	6.40	30.00	103
1998	286,524	30.9	5.20	40.00	166
1999	367,743	28.3	5.50	44.00	190
2000	466,365	26.8	5.50	45.00	228
2001	604,919	29.7	5.50	48.00	304
2002	786,524	30.0	5.80	50.00	379
2003	701,014	-10.9	5.50	50.00	347
2004	1,055,202	50.5	6.30	52.00	578
2005	1,421,615	34.7	6.30	52.00	832
2006	1,700,041	19.6	6.50	54.79	1,049
2007	2,015,128	18.5	6.50	54.79	1,400
2008	2,125,465	5.5	6.65	62.68	1,595
2009	2,161,577	1.7	6.45	63.57	1,561
2010	2,508,289	16.0	6.45	65.74	1,786
2011	2,881,862	14.9	6.50	66.15	1,912
2012	3,584,307	24.4	6.30	68.49	2,210
2013	4,210,165	17.5	6.75	69.53	2,547

International tourist arrivals to Cambodia

Destination	Months	2009	2010	2011	2012	2013	2014	change (%) 2014*/13
Cambodia	Q1	622,288	683,692	778,467	995,210	1,172,072	1,267,922	8.2
<i>International tourist arrivals</i>	January	218,691	232,590	274,471	350,257	404,106	442,045	9.4
<i>by all means of</i>	February	200,789	222,354	255,499	321,870	385,760	425,801	10.4
<i>transportations</i>	March	202,808	228,748	248,497	323,083	382,206	400,076	4.7
	Q2	464,230	537,464	606,562	761,442	920,527	933,446	1.4
	April	177,955	200,965	223,032	277,304	327,000	332,690	1.7
	May	145,564	170,164	190,258	233,220	292,115	300,302	2.8
	June	140,711	166,335	193,272	250,918	301,412	300,454	-0.3
	Q3	487,422	582,024	699,760	820,888	964,612	340,091	
	July	163,817	202,349	239,527	284,282	338,761	340,091	0.4
	August	171,668	206,563	250,429	293,859	342,064		
	September	151,937	173,112	209,804	242,747	283,787		
	Q4	587,637	705,109	797,073	1,006,767	1,152,954	0	
	October	157,105	205,515	233,190	290,959	334,410		
	November	195,570	249,892	265,539	333,482	386,737		
	December	234,962	249,702	298,344	382,326	431,807		
	Total	2,161,577	2,508,289	2,881,862	3,584,307	4,210,165	2,541,459	4.5



Source: Statistics and Tourism Information Department, MOT

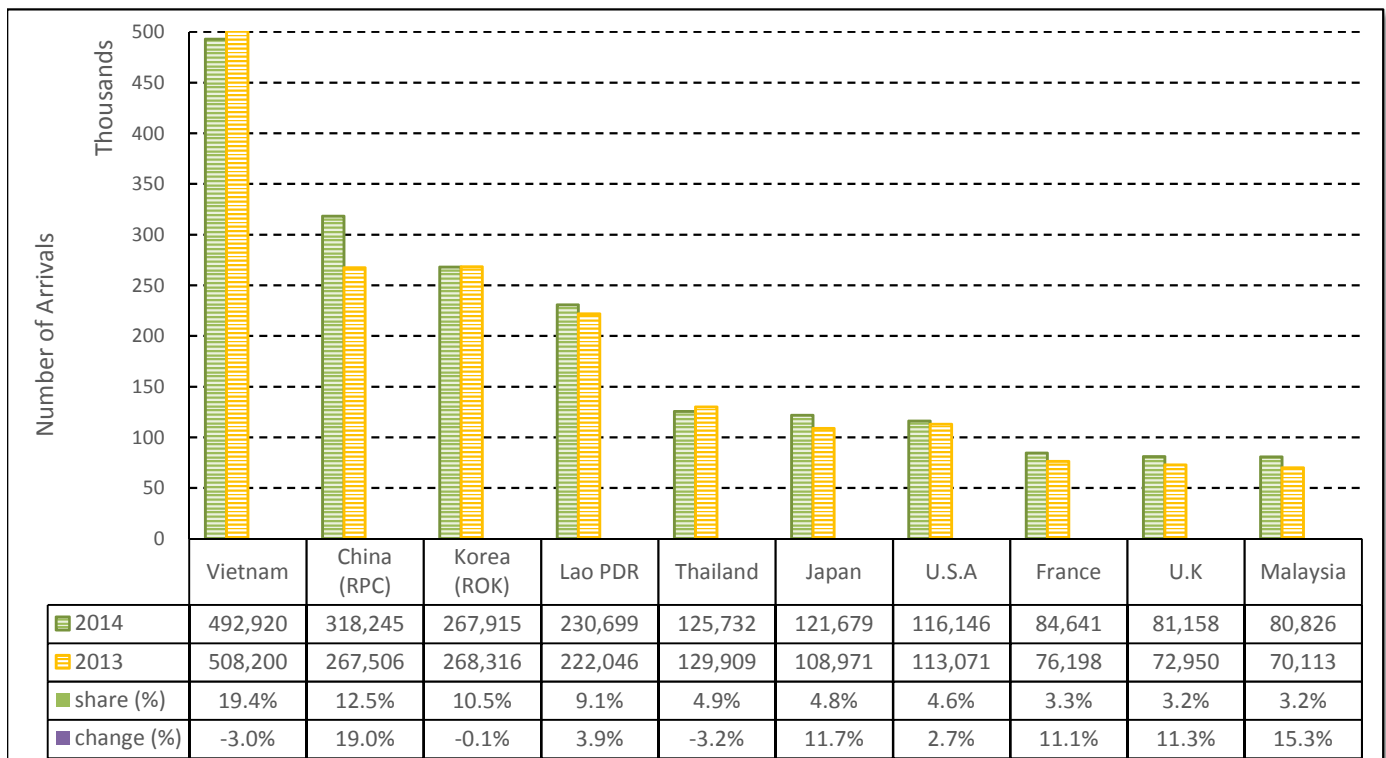
TOURISM STATISTICS REPORT IN THE FIRST SEVEN MONTHS 2014

I. INBOUND TOURISM

1. International tourist arrivals to Cambodia in January - July 2014

	Inbound tourism		share (%)		change (%)
	2013	2014	2013	2014	2014*/13
Air	1,153,864	1,306,535	47.5	51.4	13.2
Phnom Penh Int'l Airport (PNH)	474,748	522,233	19.5	20.5	10.0
Siem Reap Int'l Airport (REP)	679,116	784,302	27.9	30.9	15.5
Land and Water ways	1,277,496	1,234,924	52.5	48.6	-3.3
Land	1,236,115	1,183,649	50.8	46.6	-4.2
Waterway	41,381	51,275	1.7	2.0	23.9
Total	2,431,360	2,541,459	100.0	100.0	4.5

2. Top ten markets arrivals in January - July 2014



II. OUTBOUND TOURISM

Outbound tourism in January - July 2014

	Outbound tourism		change (%)
	2013	2014	2014*/13
Cambodian Outbound Tourists	509,050	540,143	6.1
International Tourists Departure	2,436,086	2,523,054	3.6

III. INTERNAL TOURISM

Foreign visitor arrivals to the regions in January - July 2014

	Arrivals		share (%)		change (%)
	2013	2014	2013	2014	2014*/13
Phnom Penh & Surrounding	1,149,871	1,136,020	41.0	38.8	-1.2
Siem Reap Angkor	1,281,489	1,405,439	45.7	48.0	9.7
Coastal Areas	336,511	342,206	12.0	11.7	1.7
Eco-tourism Areas	36,784	41,891	1.3	1.4	13.9
Total	2,804,655	2,925,556	100.0	100.0	4.3

International Tourist Arrivals to Cambodia by Country of Residence in January - July 2014

(by all mean of transportations)

Regions Country of Residence	2013		2014			share		change	
			Purpose of Visit			Total	Female	share (%)	change (%)
			Holiday	Business	Other				
							2014*	2014*/13	
GRAND TOTAL	2,431,360	2,410,452	114,826	16,181	2,541,459	1,184,497	100.0	4.5	
Asia and the Pacific	1,857,981	1,827,251	93,659	9,039	1,929,949	915,476	75.9	3.9	
ASEAN (South-East Asia)	1,047,236	1,018,287	28,446	4,228	1,050,961	520,071	41.4	0.4	
Brunei Darussalam	393	512	11	25	548	235	0.0	39.4	
Indonesia	15,595	17,063	3,258	180	20,501	5,777	0.8	31.5	
Lao PDR	222,046	230,268	109	322	230,699	149,610	9.1	3.9	
Malaysia	70,113	75,586	5,121	119	80,826	27,664	3.2	15.3	
Myanmar	3,085	3,050	300	103	3,453	1,421	0.1	11.9	
Philippines	67,648	56,142	4,592	420	61,154	35,660	2.4	-9.6	
Singapore	30,247	33,380	1,639	109	35,128	12,028	1.4	16.1	
Thailand	129,909	117,155	6,939	1,638	125,732	50,885	4.9	-3.2	
Vietnam	508,200	485,131	6,477	1,312	492,920	236,791	19.4	-3.0	
North-East Asia	705,683	707,493	58,341	3,089	768,923	349,974	30.3	9.0	
China (RPC)	267,506	283,767	33,394	1,084	318,245	146,391	12.5	19.0	
Hong Kong SAR	3,906	4,105	120	8	4,233	2,017	0.2	8.4	
Japan	108,971	112,213	8,423	1,043	121,679	48,515	4.8	11.7	
Korea (ROK)	268,316	257,992	9,000	923	267,915	129,830	10.5	-0.1	
Mongolia	242	211	10	15	236	120	0.0	-2.5	
Taiwan, China	56,742	49,205	7,394	16	56,615	23,101	2.2	-0.2	
Southern Asia	16,132	16,058	2,268	526	18,852	5,396	0.7	16.9	
Afghanistan	214	165	7	5	177	48	0.0	-17.3	
Bangladesh	1,026	681	152	96	929	147	0.0	-9.5	
Bhutan	53	46	0	15	61	24	0.0	15.1	
India	12,547	13,339	1,504	252	15,095	4,609	0.6	20.3	
Nepal	825	749	134	54	937	208	0.0	13.6	
Pakistan	604	424	201	52	677	121	0.0	12.1	
Sri Lanka	863	654	270	52	976	239	0.0	13.1	
Western Asia	1,980	2,092	128	13	2,233	1,189	0.1	12.8	
Kazakhstan	1,618	1,786	97	7	1,890	1,012	0.1	16.8	
Uzbekistan	362	306	31	6	343	177	0.0	-5.2	
Oceania	84,538	81,701	4,368	1,082	87,151	37,984	3.4	3.1	
Australia	73,518	70,708	3,611	935	75,254	33,017	3.0	2.4	
Fiji	64	63	15	5	83	24	0.0	29.7	
New Zealand	10,956	10,930	742	142	11,814	4,943	0.5	7.8	
Other Asia & the Pacific	2,412	1,620	108	101	1,829	862	0.1	-24.2	
Europe	401,414	413,685	13,681	3,793	431,159	189,682	17.0	7.4	
Northern Europe	107,358	112,883	4,180	977	118,040	48,329	4.6	9.9	
Denmark	6,963	8,156	220	81	8,457	3,593	0.3	21.5	
Finland	4,182	4,145	125	51	4,321	1,618	0.2	3.3	
Iceland	487	421	7	1	429	183	0.0	-11.9	
Ireland	5,980	5,999	147	45	6,191	2,651	0.2	3.5	
Norway	6,094	6,284	133	33	6,450	2,807	0.3	5.8	
Sweden	10,702	10,632	306	96	11,034	4,310	0.4	3.1	
United Kingdom	72,950	77,246	3,242	670	81,158	33,167	3.2	11.3	
Western Europe	166,824	168,047	7,102	2,203	177,352	74,457	7.0	6.3	
Austria	5,437	5,403	109	26	5,538	2,294	0.2	1.9	
Belgium	9,372	8,998	375	142	9,515	3,798	0.4	1.5	
France	76,198	78,842	4,487	1,312	84,641	35,656	3.3	11.1	
Germany	46,713	47,301	1,208	425	48,934	20,490	1.9	4.8	
Luxembourg	306	278	8	4	290	105	0.0	-5.2	
Monaco	63	36	2	1	39	15	0.0	-38.1	
Netherlands	16,872	15,692	491	192	16,375	6,979	0.6	-2.9	
Switzerland	11,863	11,497	422	101	12,020	5,120	0.5	1.3	
Central / Eastern Europe	94,599	97,180	1,271	227	98,678	51,248	3.9	4.3	
Bulgaria	499	696	6	12	714	365	0.0	43.1	
Czech Republic	2,893	3,390	56	23	3,469	1,430	0.1	19.9	
Estonia	775	1,012	29	11	1,052	414	0.0	35.7	
Hungary	1,914	1,936	30	15	1,981	872	0.1	3.5	
Lithuania	1,003	990	8	2	1,000	500	0.0	-0.3	
Poland	7,110	7,179	49	31	7,259	3,562	0.3	2.1	
Romania	778	1,046	57	9	1,112	558	0.0	42.9	
Russian Federation	74,754	75,717	915	93	76,725	40,883	3.0	2.6	
Slovakia	1,426	1,457	46	26	1,529	668	0.1	7.2	
Ukraine	3,447	3,757	75	5	3,837	1,996	0.2	11.3	

Source: Statistics and Tourism Information Department, MOT

International Tourist Arrivals to Cambodia by Country of Residence in January - July 2014

(by all mean of transportations)

Regions Country of Residence	2013		2014			Total	Female	share	change
	Purpose of Visit			2014*	2014*/13				
	Holiday	Business	Other			(%)	(%)		
GRAND TOTAL	2,431,360	2,410,452	114,826	16,181	2,541,459	1,184,497	100.0	4.5	
Southern Europe	30,580	34,202	1,046	309	35,557	14,942	1.4	16.3	
Croatia	443	443	13	4	460	216	0.0	3.8	
Greece	635	686	29	5	720	256	0.0	13.4	
Italy	12,868	14,992	466	129	15,587	6,184	0.6	21.1	
Portugal	2,059	1,983	63	15	2,061	930	0.1	0.1	
Serbia	351	348	15	1	364	177	0.0	3.7	
Slovenia	733	626	10	0	636	281	0.0	-13.2	
Spain	11,030	12,567	277	100	12,944	6,005	0.5	17.4	
Turkey	2,461	2,557	173	55	2,785	893	0.1	13.2	
Other Europe	2,053	1,373	82	77	1,532	706	0.1	-25.4	
Americas	161,958	159,797	7,036	3,143	169,976	75,484	6.7	5.0	
Argentina	4,112	4,197	28	19	4,244	2,109	0.2	3.2	
Brazil	4,090	5,815	77	23	5,915	2,942	0.2	44.6	
Canada	31,839	31,769	1,220	271	33,260	14,860	1.3	4.5	
Chile	2,669	3,528	47	11	3,586	1,848	0.1	34.4	
Colombia	1,002	1,203	18	13	1,234	614	0.0	23.2	
Costa Rica	195	195	5	4	204	96	0.0	4.6	
Ecuador	144	176	12	4	192	94	0.0	33.3	
Mexico	2,697	3,076	27	22	3,125	1,553	0.1	15.9	
Peru	375	441	20	10	471	233	0.0	25.6	
United States	113,071	107,910	5,525	2,711	116,146	50,370	4.6	2.7	
Uruguay	521	608	1	1	610	304	0.0	17.1	
Other Americas	1,243	879	56	54	989	461	0.0	-20.4	
Africa	3,377	2,845	285	111	3,241	1,327	0.1	-4.0	
Cameroon	86	69	7	9	85	21	0.0	-1.2	
Congo	35	17	4	6	27	8	0.0	-22.9	
Ghana	106	54	5	5	64	22	0.0	-39.6	
Kenya	179	121	9	15	145	73	0.0	-19.0	
Liberia	26	14	0	1	15	2	0.0	-42.3	
Nigeria	366	192	125	21	338	35	0.0	-7.7	
Sudan	32	34	1	7	42	6	0.0	31.3	
South Africa	2,200	2,132	115	23	2,270	1,046	0.1	3.2	
Uganda	42	26	3	3	32	7	0.0	-23.8	
Other Africa	305	186	16	21	223	107	0.0	-26.9	
Middle East	6,630	6,874	165	95	7,134	2,528	0.3	7.6	
Egypt	184	164	9	6	179	35	0.0	-2.7	
Iran	402	299	18	9	326	74	0.0	-18.9	
Iraq	93	44	1	1	46	7	0.0	-50.5	
Israel	4,580	5,322	116	44	5,482	2,254	0.2	19.7	
Kuwait	657	517	1	14	532	24	0.0	-19.0	
Oman	137	99	0	1	100	13	0.0	-27.0	
Palestine	63	45	1	0	46	12	0.0	-27.0	
Qatar	79	17	0	1	18	5	0.0	-77.2	
Saudi Arabia	97	87	8	1	96	7	0.0	-1.0	
United Arab Emirates	71	54	0	0	54	3	0.0	-23.9	
Yemen	82	98	3	3	104	27	0.0	26.8	
Other Middle East	185	128	8	15	151	67	0.0	-18.4	

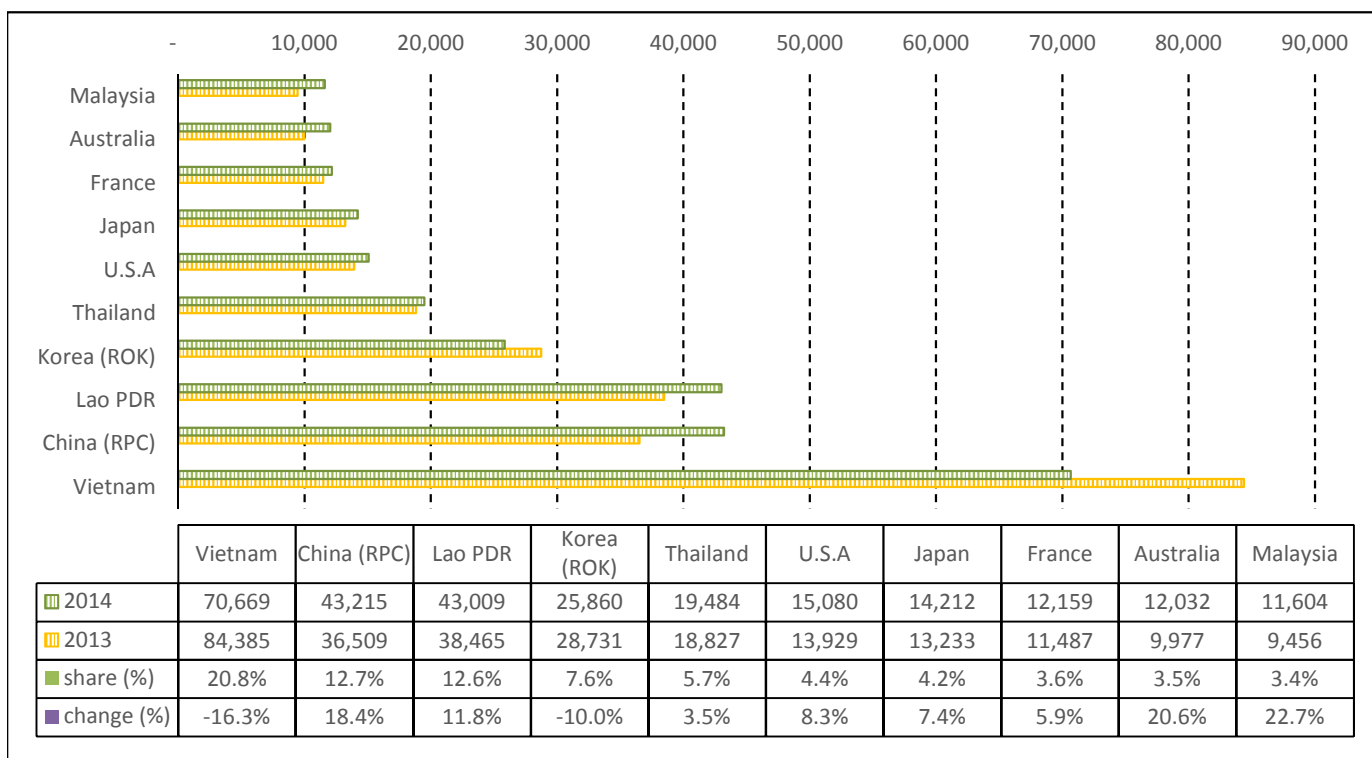
TOURISM STATISTICS REPORT IN JULY 2014

I. INBOUND TOURISM

1. International tourist arrivals to Cambodia in July 2014

	Inbound tourism		share (%)		change (%)
	2013	2014	2013	2014	2014*/13
Air	144,649	169,351	42.7	49.8	17.1
Phnom Penh Int'l Airport (PNH)	68,078	76,980	20.1	22.6	13.1
Siem Reap Int'l Airport (REP)	76,571	92,371	22.6	27.2	20.6
Land and Water ways	194,112	170,740	57.3	50.2	-12.0
Land	190,235	164,703	56.2	48.4	-13.4
Waterway	3,877	6,037	1.1	1.8	55.7
Total	338,761	340,091	100.0	100.0	0.4

2. Top ten markets arrivals in July 2014



II. OUTBOUND TOURISM

Outbound tourism in July 2014

	Outbound tourism		change (%)
	2013	2014	2014*/13
Cambodian Outbound Tourists	67,758	85,357	26.0
International Tourists Departure	333,425	325,697	-2.3

III. INTERNAL TOURISM

Foreign visitor arrivals to the regions in July 2014

	Arrivals		share (%)		change (%)
	2013	2014	2013	2014	2014*/13
Phnom Penh & Surrounding	179,517	174,196	47.2	45.5	-3.0
Siem Reap Angkor	159,244	165,895	41.9	43.3	4.2
Coastal Areas	37,384	38,661	9.8	10.1	3.4
Eco-tourism Areas	4,239	4,374	1.1	1.1	3.2
Total	380,384	383,126	100.0	100.0	0.7

International Tourist Arrivals to Cambodia by Country of Residence in July 2014

(by all mean of transportations)

Regions Country of Residence	2013		2014			share		change	
			Purpose of Visit			Total	Female	(%)	(%)
			Holiday	Business	Other			2014*	2014*/13
GRAND TOTAL	338,761	321,684	16,092	2,315	340,091	159,603	100.0	0.4	
Asia and the Pacific	268,103	252,850	13,094	1,288	267,232	127,100	78.6	-0.3	
ASEAN (South-East Asia)	167,454	153,446	4,158	576	158,180	77,616	46.5	-5.5	
Brunei Darussalam	81	55	1	1	57	25	0.0	-29.6	
Indonesia	2,290	2,919	502	14	3,435	996	1.0	50.0	
Lao PDR	38,465	42,945	21	43	43,009	26,742	12.6	11.8	
Malaysia	9,456	10,822	774	8	11,604	3,840	3.4	22.7	
Myanmar	432	340	27	33	400	144	0.1	-7.4	
Philippines	9,648	4,043	595	60	4,698	2,744	1.4	-51.3	
Singapore	3,870	4,577	234	13	4,824	1,582	1.4	24.7	
Thailand	18,827	18,184	1,009	291	19,484	7,741	5.7	3.5	
Vietnam	84,385	69,561	995	113	70,669	33,802	20.8	-16.3	
North-East Asia	86,340	83,229	7,950	424	91,603	41,998	26.9	6.1	
China (RPC)	36,509	38,648	4,415	152	43,215	20,631	12.7	18.4	
Hong Kong SAR	322	553	18	1	572	278	0.2	77.6	
Japan	13,233	12,815	1,236	161	14,212	5,309	4.2	7.4	
Korea (ROK)	28,731	24,478	1,278	104	25,860	12,597	7.6	-10.0	
Mongolia	32	42	3	4	49	31	0.0	53.1	
Taiwan, China	7,513	6,693	1,000	2	7,695	3,152	2.3	2.4	
Southern Asia	2,257	2,387	322	87	2,796	744	0.8	23.9	
Afghanistan	28	3	0	1	4	1	0.0	-85.7	
Bangladesh	112	146	16	22	184	22	0.1	64.3	
Bhutan	5	4	0	0	4	1	0.0	-20.0	
India	1,837	1,990	231	41	2,262	642	0.7	23.1	
Nepal	98	101	24	12	137	29	0.0	39.8	
Pakistan	81	56	22	5	83	14	0.0	2.5	
Sri Lanka	96	87	29	6	122	35	0.0	27.1	
Western Asia	215	175	19	1	195	95	0.1	-9.3	
Kazakhstan	172	117	14	1	132	66	0.0	-23.3	
Uzbekistan	43	58	5	0	63	29	0.0	46.5	
Oceania	11,692	13,414	632	179	14,225	6,538	4.2	21.7	
Australia	9,977	11,385	501	146	12,032	5,590	3.5	20.6	
Fiji	10	3	2	0	5	2	0.0	-50.0	
New Zealand	1,705	2,026	129	33	2,188	946	0.6	28.3	
Other Asia & the Pacific	145	199	13	21	233	109	0.1	60.7	
Europe	50,417	48,612	1,949	490	51,051	22,935	15.0	1.3	
Northern Europe	15,107	14,970	642	137	15,749	6,995	4.6	4.2	
Denmark	1,044	1,109	36	8	1,153	494	0.3	10.4	
Finland	264	257	14	3	274	104	0.1	3.8	
Iceland	58	40	0	0	40	18	0.0	-31.0	
Ireland	1,318	1,309	14	1	1,324	680	0.4	0.5	
Norway	850	828	18	5	851	385	0.3	0.1	
Sweden	797	803	48	12	863	298	0.3	8.3	
United Kingdom	10,776	10,624	512	108	11,244	5,016	3.3	4.3	
Western Europe	22,852	22,185	1,002	274	23,461	10,199	6.9	2.7	
Austria	537	591	17	3	611	266	0.2	13.8	
Belgium	2,141	1,937	57	21	2,015	874	0.6	-5.9	
France	11,487	11,405	606	148	12,159	5,356	3.6	5.9	
Germany	3,811	3,564	186	67	3,817	1,492	1.1	0.2	
Luxembourg	38	32	0	0	32	16	0.0	-15.8	
Monaco	16	5	0	0	5	3	0.0	-68.8	
Netherlands	3,416	3,176	64	24	3,264	1,502	1.0	-4.4	
Switzerland	1,406	1,475	72	11	1,558	690	0.5	10.8	
Central / Eastern Europe	7,044	5,756	179	28	5,963	3,109	1.8	-15.3	
Bulgaria	21	26	1	4	31	14	0.0	47.6	
Czech Republic	208	348	14	3	365	163	0.1	75.5	
Estonia	25	78	9	7	94	26	0.0	276.0	
Hungary	111	85	2	0	87	34	0.0	-21.6	
Lithuania	41	34	0	0	34	14	0.0	-17.1	
Poland	463	555	4	1	560	269	0.2	21.0	
Romania	66	77	7	0	84	32	0.0	27.3	
Russian Federation	5,814	4,235	126	11	4,372	2,395	1.3	-24.8	
Slovakia	108	109	6	1	116	53	0.0	7.4	
Ukraine	187	209	10	1	220	109	0.1	17.6	

Source: Statistics and Tourism Information Department, MOT

International Tourist Arrivals to Cambodia by Country of Residence in July 2014

(by all mean of transportations)

Regions Country of Residence	2013	2014			Total	Female	share	change
		Purpose of Visit					(%)	(%)
	Holiday	Business	Other	2014*	2014*/13			
GRAND TOTAL	338,761	321,684	16,092	2,315	340,091	159,603	100.0	0.4
Southern Europe	5,309	5,562	116	38	5,716	2,555	1.7	7.7
Croatia	33	30	3	1	34	13	0.0	3.0
Greece	46	77	2	0	79	24	0.0	71.7
Italy	1,497	1,439	51	20	1,510	588	0.4	0.9
Portugal	264	286	11	1	298	130	0.1	12.9
Serbia	28	20	1	0	21	12	0.0	-25.0
Slovenia	84	62	1	0	63	30	0.0	-25.0
Spain	3,124	3,356	29	9	3,394	1,650	1.0	8.6
Turkey	233	292	18	7	317	108	0.1	36.1
Other Europe	105	139	10	13	162	77	0.0	54.3
Americas	19,232	19,269	992	512	20,773	9,185	6.1	8.0
Argentina	220	177	5	2	184	89	0.1	-16.4
Brazil	374	499	19	2	520	243	0.2	39.0
Canada	3,403	3,311	155	30	3,496	1,667	1.0	2.7
Chile	309	303	7	0	310	155	0.1	0.3
Colombia	162	232	3	0	235	119	0.1	45.1
Costa Rica	27	20	0	0	20	9	0.0	-25.9
Ecuador	23	26	0	0	26	13	0.0	13.0
Mexico	639	673	2	5	680	344	0.2	6.4
Peru	44	80	4	0	84	45	0.0	90.9
United States	13,929	13,826	790	464	15,080	6,443	4.4	8.3
Uruguay	14	21	0	0	21	6	0.0	50.0
Other Americas	88	101	7	9	117	52	0.0	33.0
Africa	397	428	38	17	483	221	0.1	21.7
Cameroon	13	12	1	1	14	5	0.0	7.7
Congo	6	1	0	2	3	1	0.0	-50.0
Ghana	1	1	0	0	1	0	0.0	0.0
Kenya	29	23	4	2	29	9	0.0	0.0
Liberia	1	2	0	0	2	0	0.0	100.0
Nigeria	49	28	20	2	50	5	0.0	2.0
Sudan	5	3	0	0	3	0	0.0	-40.0
South Africa	266	342	11	6	359	192	0.1	35.0
Uganda	4	1	1	1	3	1	0.0	-25.0
Other Africa	23	15	1	3	19	8	0.0	-17.4
Middle East	612	525	19	8	552	162	0.2	-9.8
Egypt	26	27	0	0	27	2	0.0	3.8
Iran	54	37	2	0	39	8	0.0	-27.8
Iraq	11	4	0	0	4	0	0.0	-63.6
Israel	421	365	17	4	386	134	0.1	-8.3
Kuwait	39	30	0	2	32	7	0.0	-17.9
Oman	14	18	0	0	18	7	0.0	28.6
Palestine	4	7	0	0	7	1	0.0	75.0
Qatar	2	1	0	0	1	0	0.0	-50.0
Saudi Arabia	3	7	0	0	7	1	0.0	133.3
United Arab Emirates	7	17	0	0	17	0	0.0	142.9
Yemen	10	3	0	0	3	0	0.0	-70.0
Other Middle East	21	9	0	2	11	2	0.0	-47.6

COMPILED BY:

1. Mr. Kong Sopheareak

Director
Statistics & Tourism Information Department
Fax: +855 23 885003
E-mail: kong@mot.gov.kh

2. Mr. Horth Vanny

Chief of Tourism Statistics Office
Compile and data analysis
Tel.: +855 12 827664