



KINGDOM OF CAMBODIA
NATION RELIGION KING



TOURISM STATISTICS REPORT

May 2014

MINISTRY OF TOURISM

Statistics and Tourism Information Department

No. A3, Street 169, Sangkat Veal Vong, Khan 7 Makara, Phnom Penh, Cambodia.

Fax: +855 23 885003

E-mail: kong@mot.gov.kh

Web site: www.mot.gov.kh

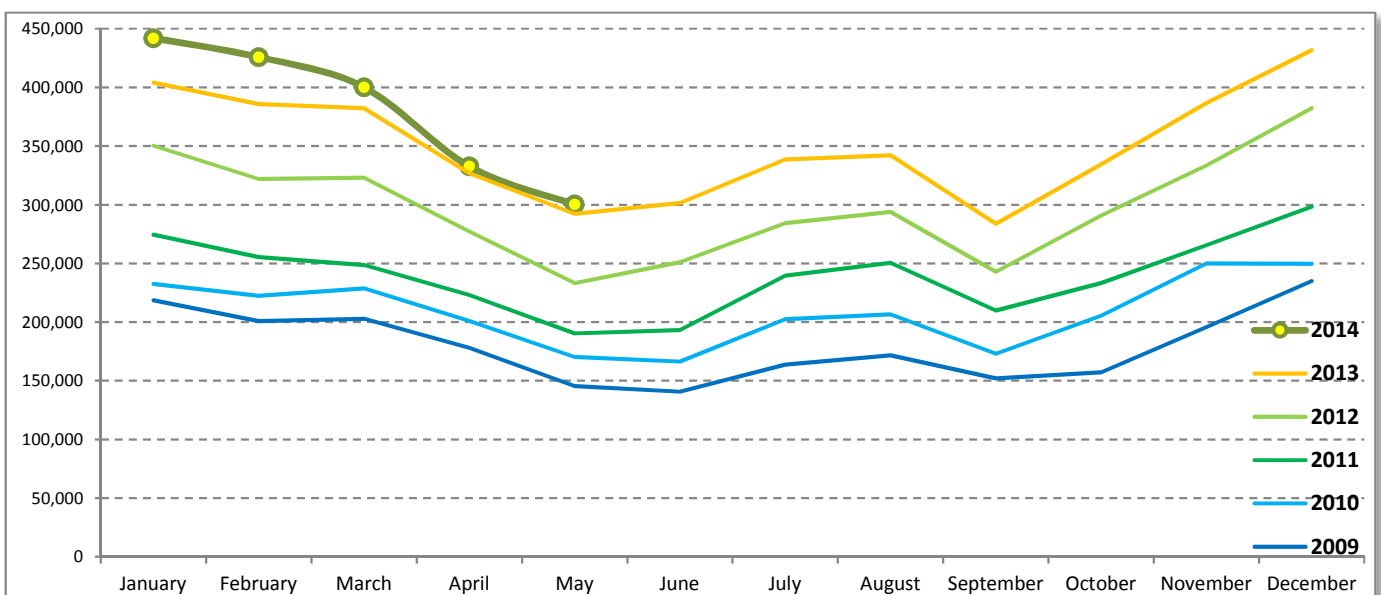
Tourism Highlights

International Tourist Arrivals, Average Length of Stay, Hotels Occupancy & Tourism Receipts 1993 - 2013

Years	Int'l Tourist Arrivals		Average Length of Stay (Days)	Hotels Occupancy (%)	Tourism Receipts (Million US\$)
	Number	Change (%)			
1993	118,183	-	N/A	N/A	N/A
1994	176,617	49.4	N/A	N/A	N/A
1995	219,680	24.4	8.00	37.00	100
1996	260,489	18.6	7.50	40.00	118
1997	218,843	-16.0	6.40	30.00	103
1998	286,524	30.9	5.20	40.00	166
1999	367,743	28.3	5.50	44.00	190
2000	466,365	26.8	5.50	45.00	228
2001	604,919	29.7	5.50	48.00	304
2002	786,524	30.0	5.80	50.00	379
2003	701,014	-10.9	5.50	50.00	347
2004	1,055,202	50.5	6.30	52.00	578
2005	1,421,615	34.7	6.30	52.00	832
2006	1,700,041	19.6	6.50	54.79	1,049
2007	2,015,128	18.5	6.50	54.79	1,400
2008	2,125,465	5.5	6.65	62.68	1,595
2009	2,161,577	1.7	6.45	63.57	1,561
2010	2,508,289	16.0	6.45	65.74	1,786
2011	2,881,862	14.9	6.50	66.15	1,912
2012	3,584,307	24.4	6.30	68.49	2,210
2013	4,210,165	17.5	6.75	69.53	2,547

International tourist arrivals to Cambodia

Destination	Months	2009	2010	2011	2012	2013	2014	change (%) 2014*/13
Cambodia	Q1	622,288	683,692	778,467	995,210	1,172,072	1,267,922	8.2
<i>International tourist arrivals by all means of transportations</i>	January	218,691	232,590	274,471	350,257	404,106	442,045	9.4
	February	200,789	222,354	255,499	321,870	385,760	425,801	10.4
	March	202,808	228,748	248,497	323,083	382,206	400,076	4.7
	Q2	464,230	537,464	606,562	761,442	920,527	632,992	
	April	177,955	200,965	223,032	277,304	327,000	332,690	1.7
	May	145,564	170,164	190,258	233,220	292,115	300,302	2.8
	June	140,711	166,335	193,272	250,918	301,412		
	Q3	487,422	582,024	699,760	820,888	964,612	0	
	July	163,817	202,349	239,527	284,282	338,761		
	August	171,668	206,563	250,429	293,859	342,064		
	September	151,937	173,112	209,804	242,747	283,787		
	Q4	587,637	705,109	797,073	1,006,767	1,152,954	0	
	October	157,105	205,515	233,190	290,959	334,410		
	November	195,570	249,892	265,539	333,482	386,737		
	December	234,962	249,702	298,344	382,326	431,807		
	Total	2,161,577	2,508,289	2,881,862	3,584,307	4,210,165	1,900,914	6.1



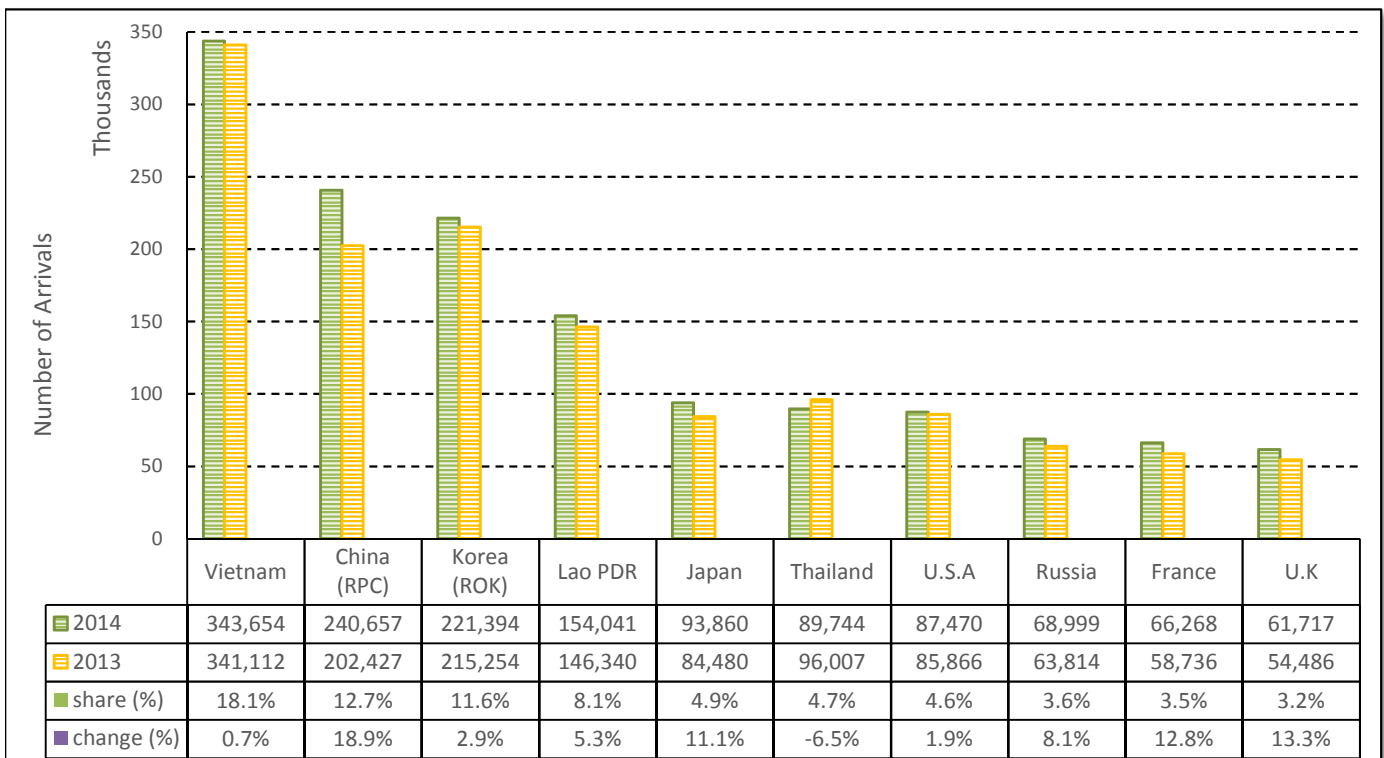
TOURISM STATISTICS REPORT IN THE FIRST FIVE MONTHS 2014

I. INBOUND TOURISM

1. International tourist arrivals to Cambodia in January - May 2014

	Inbound tourism		share (%)		change (%)
	2013	2014	2013	2014	2014*/13
Air	882,763	997,721	49.3	52.5	13.0
Phnom Penh Int'l Airport (PNH)	342,651	376,723	19.1	19.8	9.9
Siem Reap Int'l Airport (REP)	540,112	620,998	30.2	32.7	15.0
Land and Water ways	908,424	903,193	50.7	47.5	-0.6
Land	872,941	862,466	48.7	45.4	-1.2
Waterway	35,483	40,727	2.0	2.1	14.8
Total	1,791,187	1,900,914	100.0	100.0	6.1

2. Top ten markets arrivals in January - May 2014



II. OUTBOUND TOURISM

Outbound tourism in January - May 2014

	Outbound tourism		change (%)
	2013	2014	2014*/13
Cambodian Outbound Tourists	367,257	384,132	4.6
International Tourists Departure	1,807,377	1,910,229	5.7

III. INTERNAL TOURISM

Foreign visitor arrivals to the regions in January - May 2014

	Arrivals		share (%)		change (%)
	2013	2014	2013	2014	2014*/13
Phnom Penh & Surrounding	794,971	787,402	38.2	35.8	-1.0
Siem Reap Angkor	996,216	1,113,512	47.8	50.7	11.8
Coastal Areas	263,338	264,408	12.6	12.0	0.4
Eco-tourism Areas	28,202	32,911	1.4	1.5	16.7
Total	2,082,727	2,198,233	100.0	100.0	5.5

International Tourist Arrivals to Cambodia by Country of Residence in January - May 2014

(by all mean of transportations)

Regions Country of Residence	2013		2014			share		change	
			Purpose of Visit			Total	Female	2014*	2014*/13
			Holiday	Business	Other				
GRAND TOTAL	1,791,187	1,805,186	84,039	11,689	1,900,914	893,233	100.0	6.1	
Asia and the Pacific	1,338,554	1,336,854	68,513	6,396	1,411,763	677,551	74.3	5.5	
ASEAN (South-East Asia)	714,516	709,102	20,436	2,808	732,346	365,002	38.5	2.5	
Brunei Darussalam	265	336	8	20	364	162	0.0	37.4	
Indonesia	10,894	11,767	2,293	150	14,210	4,074	0.7	30.4	
Lao PDR	146,340	153,731	80	230	154,041	100,895	8.1	5.3	
Malaysia	49,699	52,626	3,641	98	56,365	18,942	3.0	13.4	
Myanmar	2,141	2,262	248	56	2,566	1,078	0.1	19.9	
Philippines	47,475	44,683	3,431	288	48,402	28,368	2.5	2.0	
Singapore	20,583	21,767	1,144	89	23,000	7,697	1.2	11.7	
Thailand	96,007	83,865	4,987	892	89,744	37,718	4.7	-6.5	
Vietnam	341,112	338,065	4,604	985	343,654	166,068	18.1	0.7	
North-East Asia	546,949	554,794	43,115	2,332	600,241	279,943	31.6	9.7	
China (RPC)	202,427	214,692	25,135	830	240,657	113,802	12.7	18.9	
Hong Kong SAR	3,172	2,647	84	6	2,737	1,268	0.1	-13.7	
Japan	84,480	87,245	5,875	740	93,860	39,319	4.9	11.1	
Korea (ROK)	215,254	214,095	6,565	734	221,394	108,408	11.6	2.9	
Mongolia	195	140	6	9	155	74	0.0	-20.5	
Taiwan, China	41,421	35,975	5,450	13	41,438	17,072	2.2	0.0	
Southern Asia	11,298	11,424	1,655	354	13,433	3,888	0.7	18.9	
Afghanistan	145	116	5	2	123	33	0.0	-15.2	
Bangladesh	813	404	109	64	577	109	0.0	-29.0	
Bhutan	40	34	0	9	43	16	0.0	7.5	
India	8,641	9,533	1,085	172	10,790	3,304	0.6	24.9	
Nepal	569	534	91	32	657	158	0.0	15.5	
Pakistan	434	315	160	43	518	98	0.0	19.4	
Srilanka	656	488	205	32	725	170	0.0	10.5	
Western Asia	1,635	1,806	89	11	1,906	1,026	0.1	16.6	
Kazakhstan	1,359	1,588	70	6	1,664	900	0.1	22.4	
Uzbekistan	276	218	19	5	242	126	0.0	-12.3	
Oceania	62,258	58,701	3,136	815	62,652	27,153	3.3	0.6	
Australia	54,476	51,108	2,600	715	54,423	23,707	2.9	-0.1	
Fiji	40	53	13	5	71	20	0.0	77.5	
New Zealand	7,742	7,540	523	95	8,158	3,426	0.4	5.4	
Other Asia & the Pacific	1,898	1,027	82	76	1,185	539	0.1	-37.6	
Europe	319,710	337,091	10,036	2,901	350,028	154,420	18.4	9.5	
Northern Europe	81,921	87,823	3,033	722	91,578	37,011	4.8	11.8	
Denmark	5,487	6,589	163	55	6,807	2,918	0.4	24.1	
Finland	3,699	3,618	99	45	3,762	1,408	0.2	1.7	
Iceland	284	345	6	1	352	149	0.0	23.9	
Ireland	3,910	3,943	116	37	4,096	1,663	0.2	4.8	
Norway	4,733	5,038	102	23	5,163	2,252	0.3	9.1	
Sweden	9,322	9,368	235	78	9,681	3,854	0.5	3.9	
United Kingdom	54,486	58,922	2,312	483	61,717	24,767	3.2	13.3	
Western Europe	132,194	135,454	5,204	1,700	142,358	59,837	7.5	7.7	
Austria	4,664	4,563	83	17	4,663	1,923	0.2	0.0	
Belgium	6,521	6,475	278	107	6,860	2,689	0.4	5.2	
France	58,736	61,932	3,311	1,025	66,268	27,876	3.5	12.8	
Germany	40,213	41,342	861	313	42,516	18,057	2.2	5.7	
Luxembourg	252	222	6	4	232	81	0.0	-7.9	
Monaco	41	30	2	1	33	12	0.0	-19.5	
Netherlands	11,979	11,478	367	152	11,997	5,028	0.6	0.2	
Switzerland	9,788	9,412	296	81	9,789	4,171	0.5	0.0	
Central / Eastern Europe	81,408	87,194	930	182	88,306	45,949	4.6	8.5	
Bulgaria	419	638	5	7	650	334	0.0	55.1	
Czech Republic	2,557	2,896	39	19	2,954	1,208	0.2	15.5	
Estonia	712	885	19	4	908	373	0.0	27.5	
Hungary	1,711	1,767	21	15	1,803	801	0.1	5.4	
Lithuania	922	910	7	2	919	469	0.0	-0.3	
Poland	6,324	6,281	36	29	6,346	3,136	0.3	0.3	
Romania	663	885	40	9	934	485	0.0	40.9	
Russian Federation	63,814	68,256	669	74	68,999	36,738	3.6	8.1	
Slovakia	1,203	1,279	39	19	1,337	582	0.1	11.1	
Ukraine	3,083	3,397	55	4	3,456	1,823	0.2	12.1	

Source: Statistics and Tourism Information Department, MOT

International Tourist Arrivals to Cambodia by Country of Residence in January - May 2014

(by all mean of transportations)

Regions Country of Residence	2013		2014			share		change	
			Purpose of Visit			Total	Female	(%)	(%)
			Holiday	Business	Other			2014*	2014*/13
GRAND TOTAL	1,791,187	1,805,186	84,039	11,689	1,900,914	893,233	100.0	6.1	
Southern Europe	22,547	25,758	807	237	26,802	11,170	1.4	18.9	
Croatia	381	403	10	2	415	198	0.0	8.9	
Greece	540	570	26	3	599	219	0.0	10.9	
Italy	10,480	12,573	353	92	13,018	5,205	0.7	24.2	
Portugal	1,585	1,502	44	13	1,559	712	0.1	-1.6	
Serbia	301	309	13	1	323	159	0.0	7.3	
Slovenia	584	535	9	0	544	239	0.0	-6.8	
Spain	6,664	7,763	214	85	8,062	3,694	0.4	21.0	
Turkey	2,012	2,103	138	41	2,282	744	0.1	13.4	
Other Europe	1,640	862	62	60	984	453	0.1	-40.0	
Americas	125,118	123,341	5,156	2,229	130,726	58,089	6.9	4.5	
Argentina	3,660	3,801	17	16	3,834	1,908	0.2	4.8	
Brazil	3,409	4,932	40	21	4,993	2,512	0.3	46.5	
Canada	25,743	25,665	925	214	26,804	11,858	1.4	4.1	
Chile	2,102	2,970	33	9	3,012	1,549	0.2	43.3	
Colombia	670	754	14	13	781	382	0.0	16.6	
Costa Rica	151	128	4	4	136	70	0.0	-9.9	
Ecuador	97	131	11	3	145	74	0.0	49.5	
Mexico	1,750	1,949	23	13	1,985	985	0.1	13.4	
Peru	272	312	13	9	334	158	0.0	22.8	
United States	85,866	81,554	4,032	1,884	87,470	38,003	4.6	1.9	
Uruguay	482	562	1	1	564	283	0.0	17.0	
Other Americas	916	583	43	42	668	307	0.0	-27.1	
Africa	2,483	2,023	213	89	2,325	932	0.1	-6.4	
Cameroon	60	46	5	7	58	13	0.0	-3.3	
Congo	18	15	4	4	23	7	0.0	27.8	
Ghana	100	50	5	5	60	21	0.0	-40.0	
Kenya	120	72	5	10	87	45	0.0	-27.5	
Liberia	23	11	0	1	12	2	0.0	-47.8	
Nigeria	254	124	91	19	234	24	0.0	-7.9	
Sudan	18	26	1	7	34	6	0.0	88.9	
South Africa	1,642	1,534	86	17	1,637	732	0.1	-0.3	
Uganda	26	19	2	2	23	6	0.0	-11.5	
Other Africa	222	126	14	17	157	76	0.0	-29.3	
Middle East	5,322	5,877	121	74	6,072	2,241	0.3	14.1	
Egypt	127	120	7	3	130	30	0.0	2.4	
Iran	310	234	11	4	249	57	0.0	-19.7	
Iraq	67	34	0	1	35	5	0.0	-47.8	
Israel	3,879	4,707	83	38	4,828	2,031	0.3	24.5	
Kuwait	457	407	1	11	419	17	0.0	-8.3	
Oman	72	70	0	1	71	6	0.0	-1.4	
Palestine	49	30	1	0	31	10	0.0	-36.7	
Qatar	55	16	0	1	17	5	0.0	-69.1	
Saudi Arabia	75	59	7	0	66	4	0.0	-12.0	
United Arab Emirates	48	30	0	0	30	3	0.0	-37.5	
Yemen	54	86	3	3	92	26	0.0	70.4	
Other Middle East	129	84	8	12	104	47	0.0	-19.4	

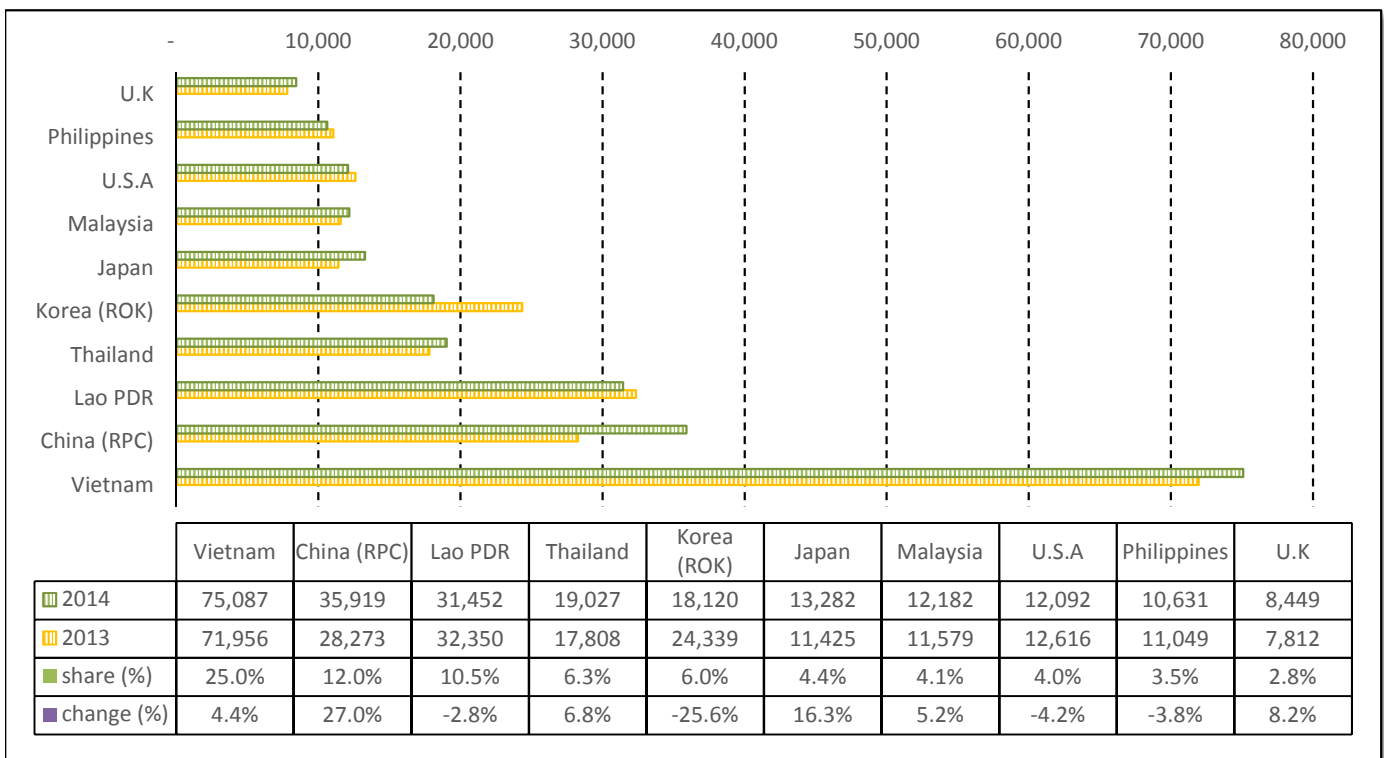
TOURISM STATISTICS REPORT IN MAY 2014

I. INBOUND TOURISM

1. International tourist arrivals to Cambodia in May 2014

	Inbound tourism		share (%)		change (%)
	2013	2014	2013	2014	2014*/13
Air	126,255	137,432	43.2	45.8	8.9
Phnom Penh Int'l Airport (PNH)	60,880	64,217	20.8	21.4	5.5
Siem Reap Int'l Airport (REP)	65,375	73,215	22.4	24.4	12.0
Land and Water ways	165,860	162,870	56.8	54.2	-1.8
Land	161,411	160,139	55.3	53.3	-0.8
Waterway	4,449	2,731	1.5	0.9	-38.6
Total	292,115	300,302	100.0	100.0	2.8

2. Top ten markets arrivals in May 2014



II. OUTBOUND TOURISM

Outbound tourism in May 2014

	Outbound tourism		change (%)
	2013	2014	2014*/13
Cambodian Outbound Tourists	83,715	84,366	0.8
International Tourists Departure	301,372	320,101	6.2

III. INTERNAL TOURISM

Foreign visitor arrivals to the regions in May 2014

	Arrivals		share (%)		change (%)
	2013	2014	2013	2014	2014*/13
Phnom Penh & Surrounding	157,049	156,629	46.1	44.4	-0.3
Siem Reap Angkor	135,066	143,673	39.7	40.7	6.4
Coastal Areas	44,177	46,840	13.0	13.3	6.0
Eco-tourism Areas	4,114	5,581	1.2	1.6	35.7
Total	340,406	352,723	100.0	100.0	3.6

International Tourist Arrivals to Cambodia by Country of Residence in May 2014

(by all mean of transportations)

Regions Country of Residence	2013	2014			Total	Female	share	change
		Purpose of Visit					(%)	(%)
		Holiday	Business	Other			2014*	2014*/13
GRAND TOTAL	292,115	282,273	15,862	2,167	300,302	137,792	100.0	2.8
Asia and the Pacific	237,367	231,245	12,981	1,211	245,437	115,118	81.7	3.4
ASEAN (South-East Asia)	152,547	153,476	4,176	628	158,280	78,117	52.7	3.8
Brunei Darussalam	40	71	2	0	73	28	0.0	82.5
Indonesia	2,360	3,051	487	76	3,614	1,109	1.2	53.1
Lao PDR	32,350	31,378	22	52	31,452	20,813	10.5	-2.8
Malaysia	11,579	11,454	720	8	12,182	4,260	4.1	5.2
Myanmar	390	535	42	12	589	232	0.2	51.0
Philippines	11,049	9,865	725	41	10,631	6,173	3.5	-3.8
Singapore	5,015	5,349	250	26	5,625	1,936	1.9	12.2
Thailand	17,808	17,832	994	201	19,027	8,039	6.3	6.8
Vietnam	71,956	73,941	934	212	75,087	35,527	25.0	4.4
North-East Asia	71,951	67,269	7,862	339	75,470	32,689	25.1	4.9
China (RPC)	28,273	31,456	4,378	85	35,919	15,942	12.0	27.0
Hong Kong SAR	440	535	15	3	553	245	0.2	25.7
Japan	11,425	11,993	1,156	133	13,282	5,029	4.4	16.3
Korea (ROK)	24,339	16,727	1,279	114	18,120	8,522	6.0	-25.6
Mongolia	35	17	1	3	21	6	0.0	-40.0
Taiwan, China	7,439	6,541	1,033	1	7,575	2,945	2.5	1.8
Southern Asia	2,443	2,357	294	72	2,723	741	0.9	11.5
Afghanistan	41	7	2	0	9	1	0.0	-78.0
Bangladesh	194	87	25	10	122	16	0.0	-37.1
Bhutan	1	10	0	6	16	5	0.0	1500.0
India	1,833	1,937	181	27	2,145	640	0.7	17.0
Nepal	120	111	14	9	134	16	0.0	11.7
Pakistan	104	59	34	14	107	25	0.0	2.9
Srilanka	150	146	38	6	190	38	0.1	26.7
Western Asia	118	144	12	1	157	79	0.1	33.1
Kazakhstan	79	111	11	0	122	58	0.0	54.4
Uzbekistan	39	33	1	1	35	21	0.0	-10.3
Oceania	10,113	7,801	620	163	8,584	3,414	2.9	-15.1
Australia	8,721	6,554	521	129	7,204	2,899	2.4	-17.4
Fiji	9	9	3	2	14	2	0.0	55.6
New Zealand	1,383	1,238	96	32	1,366	513	0.5	-1.2
Other Asia & the Pacific	195	198	17	8	223	78	0.1	14.4
Europe	35,503	33,079	1,882	515	35,476	14,469	11.8	-0.1
Northern Europe	10,291	10,356	588	127	11,071	4,225	3.7	7.6
Denmark	581	575	31	11	617	229	0.2	6.2
Finland	310	241	18	4	263	89	0.1	-15.2
Iceland	34	31	2	0	33	14	0.0	-2.9
Ireland	615	612	24	11	647	257	0.2	5.2
Norway	341	376	17	6	399	137	0.1	17.0
Sweden	598	615	39	9	663	227	0.2	10.9
United Kingdom	7,812	7,906	457	86	8,449	3,272	2.8	8.2
Western Europe	14,278	13,717	976	322	15,015	5,818	5.0	5.2
Austria	304	282	10	0	292	120	0.1	-3.9
Belgium	679	790	60	22	872	309	0.3	28.4
France	6,700	6,861	630	208	7,699	2,953	2.6	14.9
Germany	3,930	3,605	167	52	3,824	1,492	1.3	-2.7
Luxembourg	19	22	1	0	23	9	0.0	21.1
Monaco	6	0	0	1	1	1	0.0	-83.3
Netherlands	1,633	1,314	62	21	1,397	573	0.5	-14.5
Switzerland	1,007	843	46	18	907	361	0.3	-9.9
Central / Eastern Europe	8,168	6,139	160	22	6,321	3,257	2.1	-22.6
Bulgaria	43	73	0	0	73	31	0.0	69.8
Czech Republic	149	139	6	2	147	64	0.0	-1.3
Estonia	35	36	4	0	40	8	0.0	14.3
Hungary	114	99	4	1	104	42	0.0	-8.8
Lithuania	55	60	1	0	61	35	0.0	10.9
Poland	525	424	5	2	431	207	0.1	-17.9
Romania	59	99	10	1	110	52	0.0	86.4
Russian Federation	6,783	4,866	112	15	4,993	2,655	1.7	-26.4
Slovakia	178	110	7	1	118	41	0.0	-33.7
Ukraine	227	233	11	0	244	122	0.1	7.5

Source: Statistics and Tourism Information Department, MOT

International Tourist Arrivals to Cambodia by Country of Residence in May 2014

(by all mean of transportations)

Regions Country of Residence	2013	2014			Total	Female	share	change
		Purpose of Visit					(%)	(%)
		Holiday	Business	Other			2014*	2014*/13
GRAND TOTAL	292,115	282,273	15,862	2,167	300,302	137,792	100.0	2.8
Southern Europe	2,599	2,704	145	37	2,886	1,105	1.0	11.0
Croatia	35	16	0	1	17	10	0.0	-51.4
Greece	93	46	3	1	50	13	0.0	-46.2
Italy	967	1,005	61	17	1,083	361	0.4	12.0
Portugal	170	207	16	0	223	107	0.1	31.2
Serbia	37	21	4	0	25	11	0.0	-32.4
Slovenia	39	24	3	0	27	8	0.0	-30.8
Spain	1,041	1,180	40	13	1,233	544	0.4	18.4
Turkey	217	205	18	5	228	51	0.1	5.1
Other Europe	167	163	13	7	183	64	0.1	9.6
Americas	18,217	16,885	926	403	18,214	7,823	6.1	0.0
Argentina	404	322	2	0	324	169	0.1	-19.8
Brazil	471	647	7	5	659	318	0.2	39.9
Canada	3,469	3,387	156	36	3,579	1,579	1.2	3.2
Chile	304	361	8	0	369	175	0.1	21.4
Colombia	106	133	2	3	138	71	0.0	30.2
Costa Rica	29	22	0	1	23	10	0.0	-20.7
Ecuador	4	29	2	0	31	17	0.0	675.0
Mexico	341	422	4	1	427	216	0.1	25.2
Peru	51	58	1	1	60	23	0.0	17.6
United States	12,616	11,009	732	351	12,092	4,988	4.0	-4.2
Uruguay	279	396	1	0	397	204	0.1	42.3
Other Americas	143	99	11	5	115	53	0.0	-19.6
Africa	383	420	39	22	481	185	0.2	25.6
Cameroon	7	11	2	1	14	2	0.0	100.0
Congo	2	1	0	3	4	0	0.0	100.0
Ghana	7	4	0	1	5	1	0.0	-28.6
Kenya	30	8	1	4	13	7	0.0	-56.7
Liberia	1	0	0	0	0	0	0.0	-100.0
Nigeria	59	23	17	5	45	3	0.0	-23.7
Sudan	3	6	0	1	7	1	0.0	133.3
South Africa	216	343	15	3	361	157	0.1	67.1
Uganda	3	3	1	0	4	0	0.0	33.3
Other Africa	55	21	3	4	28	14	0.0	-49.1
Middle East	645	644	34	16	694	197	0.2	7.6
Egypt	44	28	3	0	31	6	0.0	-29.5
Iran	58	32	1	1	34	7	0.0	-41.4
Iraq	21	13	0	0	13	4	0.0	-38.1
Israel	318	408	26	11	445	167	0.1	39.9
Kuwait	92	86	0	0	86	0	0.0	-6.5
Oman	16	13	0	1	14	1	0.0	-12.5
Palestine	21	2	0	0	2	1	0.0	-90.5
Qatar	4	5	0	0	5	1	0.0	25.0
Saudi Arabia	18	19	3	0	22	2	0.0	22.2
United Arab Emirates	9	11	0	0	11	1	0.0	22.2
Yemen	16	17	0	0	17	0	0.0	6.3
Other Middle East	28	10	1	3	14	7	0.0	-50.0

COMPILED BY:

1. Mr. Kong Sopheareak

Director
Statistics & Tourism Information Department
Fax: +855 23 885003
E-mail: kong@mot.gov.kh

2. Mr. Horth Vanny

Chief of Tourism Statistics Office
Compile and data analysis
Tel.: +855 12 827664