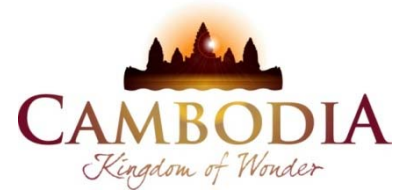




KINGDOM OF CAMBODIA
NATION RELIGION KING



TOURISM STATISTICS REPORT

April 2014

MINISTRY OF TOURISM

Statistics and Tourism Information Department

No. A3, Street 169, Sangkat Veal Vong, Khan 7 Makara, Phnom Penh, Cambodia.

Fax: +855 23 885003

E-mail: kong@mot.gov.kh

Web site: www.mot.gov.kh

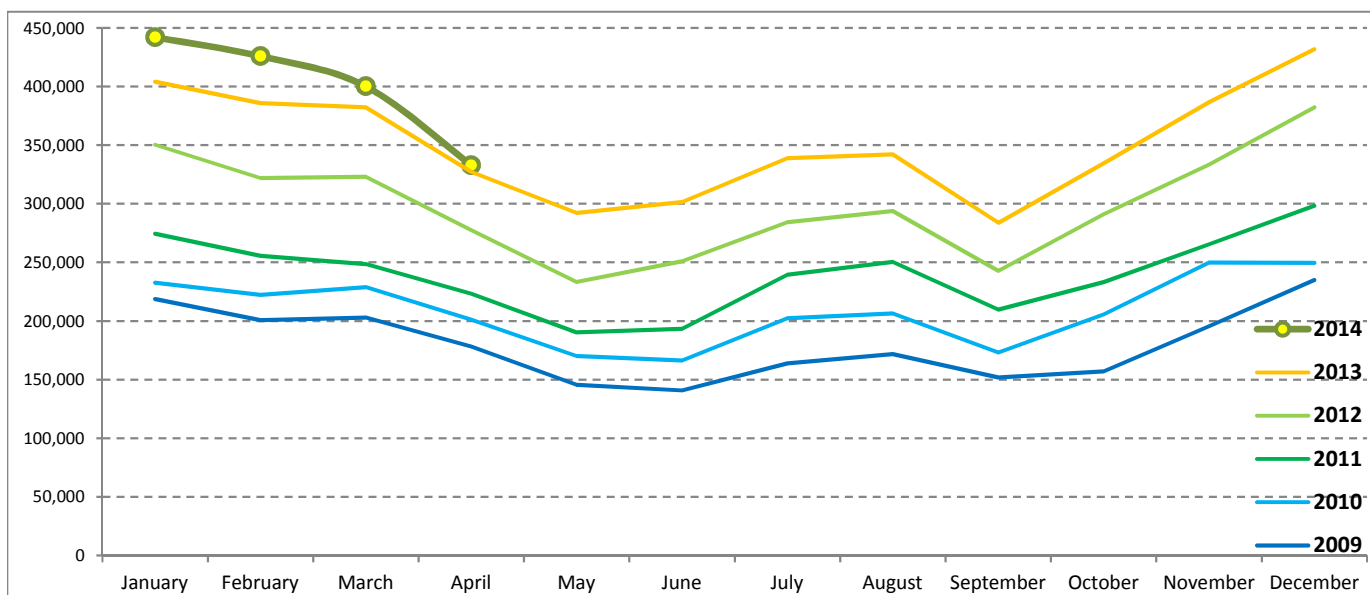
Tourism Highlights

International Tourist Arrivals, Average Length of Stay, Hotels Occupancy & Tourism Receipts 1993 - 2013

Years	Int'l Tourist Arrivals		Average Length	Hotels Occupancy	Tourism Receipts
	Number	Change (%)	of Stay (Days)	(%)	(Million US\$)
1993	118,183	-	N/A	N/A	N/A
1994	176,617	49.4	N/A	N/A	N/A
1995	219,680	24.4	8.00	37.00	100
1996	260,489	18.6	7.50	40.00	118
1997	218,843	-16.0	6.40	30.00	103
1998	286,524	30.9	5.20	40.00	166
1999	367,743	28.3	5.50	44.00	190
2000	466,365	26.8	5.50	45.00	228
2001	604,919	29.7	5.50	48.00	304
2002	786,524	30.0	5.80	50.00	379
2003	701,014	-10.9	5.50	50.00	347
2004	1,055,202	50.5	6.30	52.00	578
2005	1,421,615	34.7	6.30	52.00	832
2006	1,700,041	19.6	6.50	54.79	1,049
2007	2,015,128	18.5	6.50	54.79	1,400
2008	2,125,465	5.5	6.65	62.68	1,595
2009	2,161,577	1.7	6.45	63.57	1,561
2010	2,508,289	16.0	6.45	65.74	1,786
2011	2,881,862	14.9	6.50	66.15	1,912
2012	3,584,307	24.4	6.30	68.49	2,210
2013	4,210,165	17.5	6.75	69.53	2,547

International tourist arrivals to Cambodia

Months	2009	2010	2011	2012	2013	2014	Change (%)				
							10/09	11/10	12/11	13/12	14*/13
Q1	622,288	683,692	778,467	995,210	1,172,072	1,267,922	9.9	13.9	27.8	17.8	8.2
January	218,691	232,590	274,471	350,257	404,106	442,045	6.4	18.0	27.6	15.4	9.4
February	200,789	222,354	255,499	321,870	385,760	425,801	10.7	14.9	26.0	19.8	10.4
March	202,808	228,748	248,497	323,083	382,206	400,076	12.8	8.6	30.0	18.3	4.7
Q2	464,230	537,464	606,562	761,442	920,527	332,690	15.8	12.9	25.5	20.9	
April	177,955	200,965	223,032	277,304	327,000	332,690	12.9	11.0	24.3	17.9	1.7
May	145,564	170,164	190,258	233,220	292,115		16.9	11.8	22.6	25.3	
June	140,711	166,335	193,272	250,918	301,412		18.2	16.2	29.8	20.1	
Q3	487,422	582,024	699,760	820,888	964,612	0	19.4	20.2	17.3	17.5	
July	163,817	202,349	239,527	284,282	338,761		23.5	18.4	18.7	19.2	
August	171,668	206,563	250,429	293,859	342,064		20.3	21.2	17.3	16.4	
September	151,937	173,112	209,804	242,747	283,787		13.9	21.2	15.7	16.9	
Q4	587,637	705,109	797,073	1,006,767	1,152,954	0	20.0	13.0	26.3	14.5	
October	157,105	205,515	233,190	290,959	334,410		30.8	13.5	24.8	14.9	
November	195,570	249,892	265,539	333,482	386,737		27.8	6.3	25.6	16.0	
December	234,962	249,702	298,344	382,326	431,807		6.3	19.5	28.1	12.9	
Total	2,161,577	2,508,289	2,881,862	3,584,307	4,210,165	1,600,612	16.0	14.9	24.4	17.5	6.8



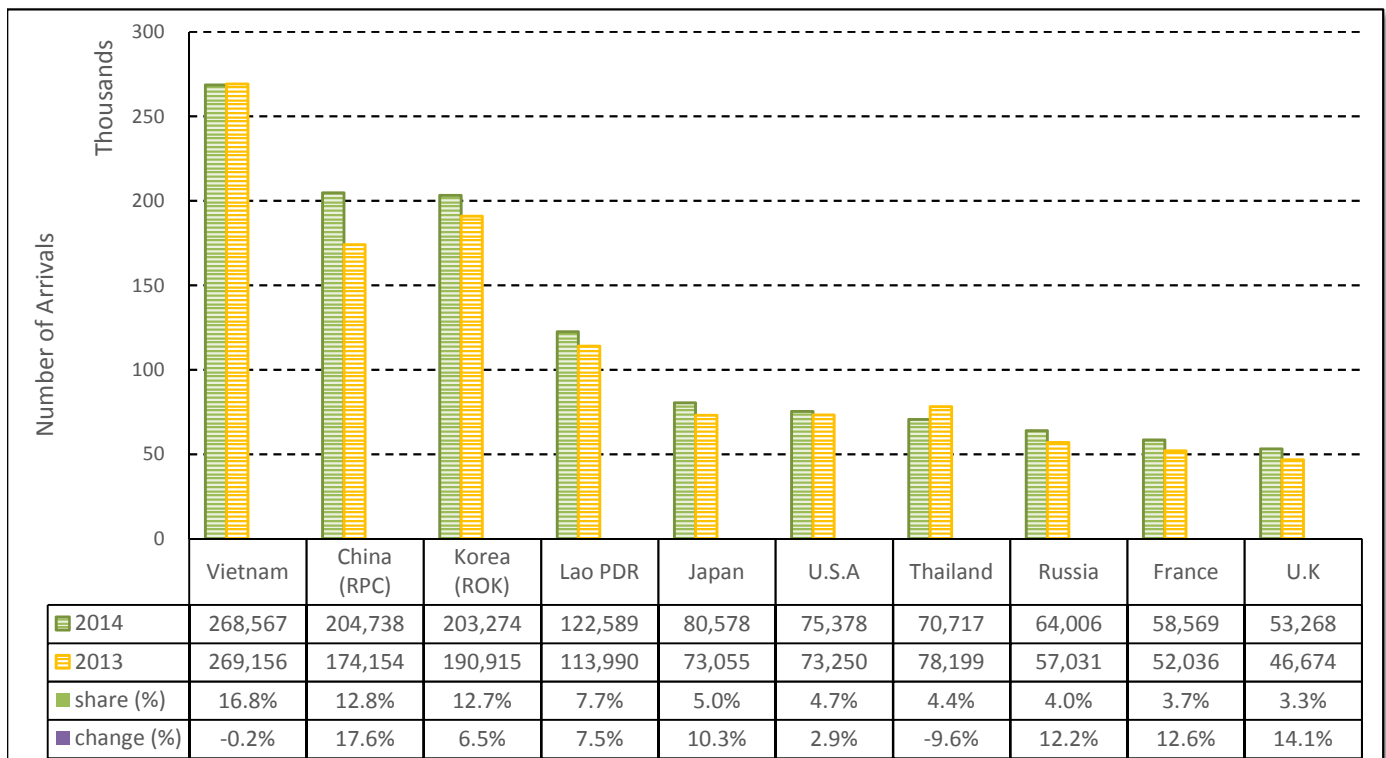
TOURISM STATISTICS REPORT IN THE FIRST FOUR MONTHS 2014

I. INBOUND TOURISM

1. International tourist arrivals to Cambodia in January - April 2014

	Inbound tourism		share (%)		change (%)
	2013	2014	2013	2014	2014*/13
Air	756,508	860,289	50.5	53.7	13.7
Phnom Penh Int'l Airport (PNH)	281,771	312,506	18.8	19.5	10.9
Siem Reap Int'l Airport (REP)	474,737	547,783	31.7	34.2	15.4
Land and Water ways	742,564	740,323	49.5	46.3	-0.3
Land	711,530	702,327	47.5	43.9	-1.3
Waterway	31,034	37,996	2.1	2.4	22.4
Total	1,499,072	1,600,612	100.0	100.0	6.8

2. Top ten markets arrivals in January - April 2014



II. OUTBOUND TOURISM

Outbound tourism in January - April 2014

	Outbound tourism		change (%)
	2013	2014	2014*/13
Cambodian Outbound Tourists	283,542	299,766	5.7
International Tourists Departure	1,506,005	1,590,128	5.6

III. INTERNAL TOURISM

Foreign visitor arrivals to the regions in January - April 2014

	Arrivals		share (%)		change (%)
	2013	2014	2013	2014	2014*/13
Phnom Penh & Surrounding	637,922	630,773	36.6	34.2	-1.1
Siem Reap Angkor	861,150	969,839	49.4	52.5	12.6
Coastal Areas	219,161	217,568	12.6	11.8	-0.7
Eco-tourism Areas	24,088	27,756	1.4	1.5	15.2
Total	1,742,321	1,845,936	100.0	100.0	5.9

International Tourist Arrivals to Cambodia by Country of Residence in January - April 2014

(by all mean of transportations)

Regions Country of Residence	2013		2014			share		change
		Purpose of Visit	Total	Female	share (%)	change (%)		
							Holiday	Business
GRAND TOTAL	1,499,072	1,522,913	68,177	9,522	1,600,612	755,441	100.0	6.8
Asia and the Pacific	1,101,187	1,105,609	55,532	5,185	1,166,326	562,433	72.9	5.9
ASEAN (South-East Asia)	561,969	555,626	16,260	2,180	574,066	286,885	35.9	2.2
Brunei Darussalam	225	265	6	20	291	134	0.0	29.3
Indonesia	8,534	8,716	1,806	74	10,596	2,965	0.7	24.2
Lao PDR	113,990	122,353	58	178	122,589	80,082	7.7	7.5
Malaysia	38,120	41,172	2,921	90	44,183	14,682	2.8	15.9
Myanmar	1,751	1,727	206	44	1,977	846	0.1	12.9
Philippines	36,426	34,818	2,706	247	37,771	22,195	2.4	3.7
Singapore	15,568	16,418	894	63	17,375	5,761	1.1	11.6
Thailand	78,199	66,033	3,993	691	70,717	29,679	4.4	-9.6
Vietnam	269,156	264,124	3,670	773	268,567	130,541	16.8	-0.2
North-East Asia	474,998	487,525	35,253	1,993	524,771	247,254	32.8	10.5
China (RPC)	174,154	183,236	20,757	745	204,738	97,860	12.8	17.6
Hong Kong SAR	2,732	2,112	69	3	2,184	1,023	0.1	-20.1
Japan	73,055	75,252	4,719	607	80,578	34,290	5.0	10.3
Korea (ROK)	190,915	197,368	5,286	620	203,274	99,886	12.7	6.5
Mongolia	160	123	5	6	134	68	0.0	-16.3
Taiwan, China	33,982	29,434	4,417	12	33,863	14,127	2.1	-0.4
Southern Asia	8,855	9,067	1,361	282	10,710	3,147	0.7	20.9
Afghanistan	104	109	3	2	114	32	0.0	9.6
Bangladesh	619	317	84	54	455	93	0.0	-26.5
Bhutan	39	24	0	3	27	11	0.0	-30.8
India	6,808	7,596	904	145	8,645	2,664	0.5	27.0
Nepal	449	423	77	23	523	142	0.0	16.5
Pakistan	330	256	126	29	411	73	0.0	24.5
Sri Lanka	506	342	167	26	535	132	0.0	5.7
Western Asia	1,517	1,662	77	10	1,749	947	0.1	15.3
Kazakhstan	1,280	1,477	59	6	1,542	842	0.1	20.5
Uzbekistan	237	185	18	4	207	105	0.0	-12.7
Oceania	52,145	50,900	2,516	652	54,068	23,739	3.4	3.7
Australia	45,755	44,554	2,079	586	47,219	20,808	3.0	3.2
Fiji	31	44	10	3	57	18	0.0	83.9
New Zealand	6,359	6,302	427	63	6,792	2,913	0.4	6.8
Other Asia & the Pacific	1,703	829	65	68	962	461	0.1	-43.5
Europe	284,207	304,012	8,154	2,386	314,552	139,951	19.7	10.7
Northern Europe	71,630	77,467	2,445	595	80,507	32,786	5.0	12.4
Denmark	4,906	6,014	132	44	6,190	2,689	0.4	26.2
Finland	3,389	3,377	81	41	3,499	1,319	0.2	3.2
Iceland	250	314	4	1	319	135	0.0	27.6
Ireland	3,295	3,331	92	26	3,449	1,406	0.2	4.7
Norway	4,392	4,662	85	17	4,764	2,115	0.3	8.5
Sweden	8,724	8,753	196	69	9,018	3,627	0.6	3.4
United Kingdom	46,674	51,016	1,855	397	53,268	21,495	3.3	14.1
Western Europe	117,916	121,737	4,228	1,378	127,343	54,019	8.0	8.0
Austria	4,360	4,281	73	17	4,371	1,803	0.3	0.3
Belgium	5,842	5,685	218	85	5,988	2,380	0.4	2.5
France	52,036	55,071	2,681	817	58,569	24,923	3.7	12.6
Germany	36,283	37,737	694	261	38,692	16,565	2.4	6.6
Luxembourg	233	200	5	4	209	72	0.0	-10.3
Monaco	35	30	2	0	32	11	0.0	-8.6
Netherlands	10,346	10,164	305	131	10,600	4,455	0.7	2.5
Switzerland	8,781	8,569	250	63	8,882	3,810	0.6	1.2
Central / Eastern Europe	73,240	81,055	770	160	81,985	42,692	5.1	11.9
Bulgaria	376	565	5	7	577	303	0.0	53.5
Czech Republic	2,408	2,757	33	17	2,807	1,144	0.2	16.6
Estonia	677	849	15	4	868	365	0.1	28.2
Hungary	1,597	1,668	17	14	1,699	759	0.1	6.4
Lithuania	867	850	6	2	858	434	0.1	-1.0
Poland	5,799	5,857	31	27	5,915	2,929	0.4	2.0
Romania	604	786	30	8	824	433	0.1	36.4
Russian Federation	57,031	63,390	557	59	64,006	34,083	4.0	12.2
Slovakia	1,025	1,169	32	18	1,219	541	0.1	18.9
Ukraine	2,856	3,164	44	4	3,212	1,701	0.2	12.5

Source: Statistics and Tourism Information Department, MOT

International Tourist Arrivals to Cambodia by Country of Residence in January - April 2014

(by all mean of transportations)

Regions Country of Residence	2013		2014			share		change	
			Purpose of Visit			Total	Female	(%)	(%)
			Holiday	Business	Other			2014*	2014*/13
GRAND TOTAL	1,499,072	1,522,913	68,177	9,522	1,600,612	755,441	100.0	6.8	
Southern Europe	19,948	23,054	662	200	23,916	10,065	1.5	19.9	
Croatia	346	387	10	1	398	188	0.0	15.0	
Greece	447	524	23	2	549	206	0.0	22.8	
Italy	9,513	11,568	292	75	11,935	4,844	0.7	25.5	
Portugal	1,415	1,295	28	13	1,336	605	0.1	-5.6	
Serbia	264	288	9	1	298	148	0.0	12.9	
Slovenia	545	511	6	0	517	231	0.0	-5.1	
Spain	5,623	6,583	174	72	6,829	3,150	0.4	21.4	
Turkey	1,795	1,898	120	36	2,054	693	0.1	14.4	
Other Europe	1,473	699	49	53	801	389	0.1	-45.6	
Americas	106,901	106,456	4,230	1,826	112,512	50,266	7.0	5.2	
Argentina	3,256	3,479	15	16	3,510	1,739	0.2	7.8	
Brazil	2,938	4,285	33	16	4,334	2,194	0.3	47.5	
Canada	22,274	22,278	769	178	23,225	10,279	1.5	4.3	
Chile	1,798	2,609	25	9	2,643	1,374	0.2	47.0	
Colombia	564	621	12	10	643	311	0.0	14.0	
Costa Rica	122	106	4	3	113	60	0.0	-7.4	
Ecuador	93	102	9	3	114	57	0.0	22.6	
Mexico	1,409	1,527	19	12	1,558	769	0.1	10.6	
Peru	221	254	12	8	274	135	0.0	24.0	
United States	73,250	70,545	3,300	1,533	75,378	33,015	4.7	2.9	
Uruguay	203	166	0	1	167	79	0.0	-17.7	
Other Americas	773	484	32	37	553	254	0.0	-28.5	
Africa	2,100	1,603	174	67	1,844	747	0.1	-12.2	
Cameroon	53	35	3	6	44	11	0.0	-17.0	
Congo	16	14	4	1	19	7	0.0	18.8	
Ghana	93	46	5	4	55	20	0.0	-40.9	
Kenya	90	64	4	6	74	38	0.0	-17.8	
Liberia	22	11	0	1	12	2	0.0	-45.5	
Nigeria	195	101	74	14	189	21	0.0	-3.1	
Sudan	15	20	1	6	27	5	0.0	80.0	
South Africa	1,426	1,191	71	14	1,276	575	0.1	-10.5	
Uganda	23	16	1	2	19	6	0.0	-17.4	
Other Africa	167	105	11	13	129	62	0.0	-22.8	
Middle East	4,677	5,233	87	58	5,378	2,044	0.3	15.0	
Egypt	83	92	4	3	99	24	0.0	19.3	
Iran	252	202	10	3	215	50	0.0	-14.7	
Iraq	46	21	0	1	22	1	0.0	-52.2	
Israel	3,561	4,299	57	27	4,383	1,864	0.3	23.1	
Kuwait	365	321	1	11	333	17	0.0	-8.8	
Oman	56	57	0	0	57	5	0.0	1.8	
Palestine	28	28	1	0	29	9	0.0	3.6	
Qatar	51	11	0	1	12	4	0.0	-76.5	
Saudi Arabia	57	40	4	0	44	2	0.0	-22.8	
United Arab Emirates	39	19	0	0	19	2	0.0	-51.3	
Yemen	38	69	3	3	75	26	0.0	97.4	
Other Middle East	101	74	7	9	90	40	0.0	-10.9	

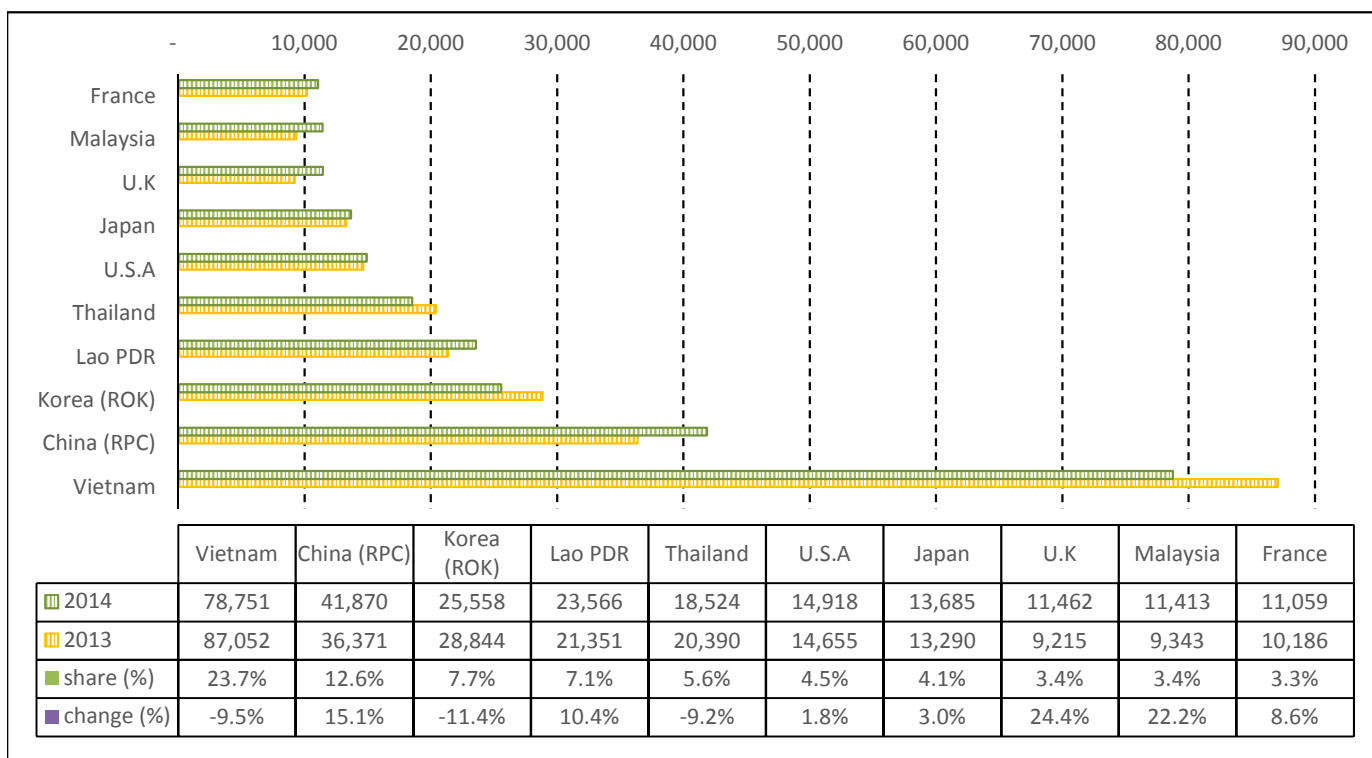
TOURISM STATISTICS REPORT IN APRIL 2014

I. INBOUND TOURISM

1. International tourist arrivals to Cambodia in April 2014

	Inbound tourism		share (%)		change (%)
	2013	2014	2013	2014	2014*/13
Air	145,348	161,320	44.4	48.5	11.0
Phnom Penh Int'l Airport (PNH)	62,859	67,435	19.2	20.3	7.3
Siem Reap Int'l Airport (REP)	82,489	93,885	25.2	28.2	13.8
Land and Water ways	181,652	171,370	55.6	51.5	-5.7
Land	175,812	165,739	53.8	49.8	-5.7
Waterway	5,840	5,631	1.8	1.7	-3.6
Total	327,000	332,690	100.0	100.0	1.7

2. Top ten markets arrivals in April 2014



II. OUTBOUND TOURISM

Outbound tourism in April 2014

	Outbound tourism		change (%)
	2013	2014	2014*/13
Cambodian Outbound Tourists	81,998	90,794	10.7
International Tourists Departure	323,714	319,318	-1.4

III. INTERNAL TOURISM

Foreign visitor arrivals to the regions in April 2014

	Arrivals		share (%)		change (%)
	2013	2014	2013	2014	2014*/13
Phnom Penh & Surrounding	160,579	141,588	41.6	36.6	-11.8
Siem Reap Angkor	166,421	191,102	43.1	49.4	14.8
Coastal Areas	53,515	46,601	13.9	12.0	-12.9
Eco-tourism Areas	5,413	7,899	1.4	2.0	45.9
Total	385,928	387,190	100.0	100.0	0.3

International Tourist Arrivals to Cambodia by Country of Residence in April 2014

(by all mean of transportations)

Regions Country of Residence	2013	2014			Total	Female	share	change
		Purpose of Visit					(%)	(%)
		Holiday	Business	Other			2014*	2014*/13
GRAND TOTAL	327,000	310,799	19,352	2,539	332,690	154,480	100.0	1.7
Asia and the Pacific	256,171	237,206	16,115	1,394	254,715	120,735	76.6	-0.6
ASEAN (South-East Asia)	155,155	144,186	4,969	675	149,830	73,924	45.0	-3.4
Brunei Darussalam	35	55	1	6	62	21	0.0	77.1
Indonesia	2,269	2,123	494	25	2,642	700	0.8	16.4
Lao PDR	21,351	23,487	18	61	23,566	15,478	7.1	10.4
Malaysia	9,343	10,479	909	25	11,413	3,885	3.4	22.2
Myanmar	742	721	67	11	799	404	0.2	7.7
Philippines	10,317	8,770	1,035	88	9,893	5,726	3.0	-4.1
Singapore	3,656	3,908	260	12	4,180	1,241	1.3	14.3
Thailand	20,390	17,224	1,133	167	18,524	7,633	5.6	-9.2
Vietnam	87,052	77,419	1,052	280	78,751	38,836	23.7	-9.5
North-East Asia	86,996	79,248	9,988	420	89,656	40,727	26.9	3.1
China (RPC)	36,371	36,070	5,660	140	41,870	19,032	12.6	15.1
Hong Kong SAR	393	453	11	1	465	207	0.1	18.3
Japan	13,290	12,200	1,333	152	13,685	5,677	4.1	3.0
Korea (ROK)	28,844	23,816	1,621	121	25,558	12,485	7.7	-11.4
Mongolia	22	17	2	3	22	9	0.0	0.0
Taiwan, China	8,076	6,692	1,361	3	8,056	3,317	2.4	-0.2
Southern Asia	2,140	2,125	404	67	2,596	766	0.8	21.3
Afghanistan	46	16	0	0	16	2	0.0	-65.2
Bangladesh	195	78	33	10	121	17	0.0	-37.9
Bhutan	7	4	0	0	4	0	0.0	-42.9
India	1,531	1,748	229	36	2,013	628	0.6	31.5
Nepal	108	149	24	14	187	59	0.1	73.1
Pakistan	102	59	60	4	123	27	0.0	20.6
Srilanka	151	71	58	3	132	33	0.0	-12.6
Western Asia	209	172	29	5	206	119	0.1	-1.4
Kazakhstan	147	144	22	3	169	97	0.1	15.0
Uzbekistan	62	28	7	2	37	22	0.0	-40.3
Oceania	11,367	11,287	711	189	12,187	5,115	3.7	7.2
Australia	9,695	9,788	600	174	10,562	4,453	3.2	8.9
Fiji	5	9	3	0	12	2	0.0	140.0
New Zealand	1,667	1,490	108	15	1,613	660	0.5	-3.2
Other Asia & the Pacific	304	188	14	38	240	84	0.1	-21.1
Europe	49,118	52,197	2,079	578	54,854	24,043	16.5	11.7
Northern Europe	12,776	14,902	655	142	15,699	6,370	4.7	22.9
Denmark	781	866	25	15	906	420	0.3	16.0
Finland	378	415	22	14	451	150	0.1	19.3
Iceland	56	39	0	0	39	15	0.0	-30.4
Ireland	634	715	24	2	741	289	0.2	16.9
Norway	564	910	21	3	934	406	0.3	65.6
Sweden	1,148	1,081	55	30	1,166	472	0.4	1.6
United Kingdom	9,215	10,876	508	78	11,462	4,618	3.4	24.4
Western Europe	20,605	21,749	1,095	299	23,143	9,763	7.0	12.3
Austria	490	612	13	4	629	279	0.2	28.4
Belgium	1,197	1,238	65	30	1,333	540	0.4	11.4
France	10,186	10,179	714	166	11,059	4,601	3.3	8.6
Germany	5,510	6,428	171	51	6,650	2,869	2.0	20.7
Luxembourg	41	35	2	2	39	17	0.0	-4.9
Monaco	19	3	0	0	3	2	0.0	-84.2
Netherlands	1,838	1,754	64	31	1,849	773	0.6	0.6
Switzerland	1,324	1,500	66	15	1,581	682	0.5	19.4
Central / Eastern Europe	12,018	10,513	150	37	10,700	5,618	3.2	-11.0
Bulgaria	73	88	1	2	91	38	0.0	24.7
Czech Republic	329	369	5	5	379	158	0.1	15.2
Estonia	81	66	1	1	68	26	0.0	-16.0
Hungary	152	249	3	5	257	110	0.1	69.1
Lithuania	80	83	0	0	83	51	0.0	3.8
Poland	823	555	5	6	566	283	0.2	-31.2
Romania	82	143	8	3	154	77	0.0	87.8
Russian Federation	9,753	8,400	107	13	8,520	4,593	2.6	-12.6
Slovakia	241	226	12	2	240	105	0.1	-0.4
Ukraine	404	334	8	0	342	177	0.1	-15.3

International Tourist Arrivals to Cambodia by Country of Residence in April 2014

(by all mean of transportations)

Regions Country of Residence	2013		2014			share		change
		Purpose of Visit			Total	Female	2014*	2014*/13
		Holiday	Business	Other				
GRAND TOTAL	327,000	310,799	19,352	2,539	332,690	154,480	100.0	1.7
Southern Europe	3,461	4,861	169	68	5,098	2,203	1.5	47.3
Croatia	42	53	1	0	54	24	0.0	28.6
Greece	113	62	5	0	67	25	0.0	-40.7
Italy	1,447	1,968	68	30	2,066	849	0.6	42.8
Portugal	359	365	6	7	378	177	0.1	5.3
Serbia	53	39	2	1	42	14	0.0	-20.8
Slovenia	55	57	1	0	58	26	0.0	5.5
Spain	1,131	1,882	43	16	1,941	914	0.6	71.6
Turkey	261	435	43	14	492	174	0.1	88.5
Other Europe	258	172	10	32	214	89	0.1	-17.1
Americas	20,595	20,119	1,087	535	21,741	9,225	6.5	5.6
Argentina	592	565	3	4	572	268	0.2	-3.4
Brazil	600	835	14	5	854	419	0.3	42.3
Canada	3,621	3,673	175	55	3,903	1,690	1.2	7.8
Chile	207	492	14	1	507	254	0.2	144.9
Colombia	129	146	2	2	150	83	0.0	16.3
Costa Rica	34	21	0	0	21	12	0.0	-38.2
Ecuador	12	22	4	0	26	15	0.0	116.7
Mexico	403	488	5	8	501	264	0.2	24.3
Peru	75	71	4	3	78	43	0.0	4.0
United States	14,655	13,622	860	436	14,918	6,094	4.5	1.8
Uruguay	112	66	0	0	66	30	0.0	-41.1
Other Americas	155	118	6	21	145	53	0.0	-6.5
Africa	470	355	50	23	428	154	0.1	-8.9
Cameroon	11	9	0	1	10	0	0.0	-9.1
Congo	4	3	4	0	7	1	0.0	75.0
Ghana	50	3	0	2	5	2	0.0	-90.0
Kenya	15	11	0	3	14	9	0.0	-6.7
Liberia	10	1	0	1	2	0	0.0	-80.0
Nigeria	47	34	22	5	61	7	0.0	29.8
Sudan	3	5	0	1	6	1	0.0	100.0
South Africa	299	260	21	4	285	122	0.1	-4.7
Uganda	4	6	1	0	7	0	0.0	75.0
Other Africa	27	23	2	6	31	12	0.0	14.8
Middle East	646	922	21	9	952	323	0.3	47.4
Egypt	23	24	1	0	25	5	0.0	8.7
Iran	50	34	1	1	36	10	0.0	-28.0
Iraq	9	6	0	0	6	1	0.0	-33.3
Israel	419	702	14	1	717	284	0.2	71.1
Kuwait	60	87	0	1	88	4	0.0	46.7
Oman	16	6	0	0	6	1	0.0	-62.5
Palestine	9	9	0	0	9	2	0.0	0.0
Qatar	1	1	0	1	2	0	0.0	100.0
Saudi Arabia	16	6	1	0	7	0	0.0	-56.3
United Arab Emirates	13	4	0	0	4	0	0.0	-69.2
Yemen	14	25	2	1	28	10	0.0	100.0
Other Middle East	16	18	2	4	24	6	0.0	50.0

COMPILED BY:

1. Mr. Kong Sopheareak

Director
Statistics & Tourism Information Department
Fax: +855 23 885003
E-mail: kong@mot.gov.kh

2. Mr. Horth Vanny

Chief of Tourism Statistics Office
Compile and data analysis
Tel.: +855 12 827664