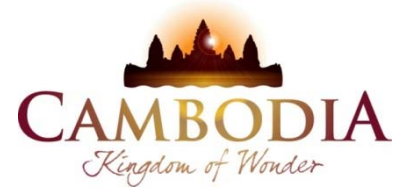




KINGDOM OF CAMBODIA  
NATION RELIGION KING



# TOURISM STATISTICS REPORT

# March 2014

**MINISTRY OF TOURISM**

Statistics and Tourism Information Department

No. A3, Street 169, Sangkat Veal Vong, Khan 7 Makara, Phnom Penh, Cambodia.

Fax: +855 23 885003

E-mail: [kong@mot.gov.kh](mailto:kong@mot.gov.kh)

Web site: [www.mot.gov.kh](http://www.mot.gov.kh)

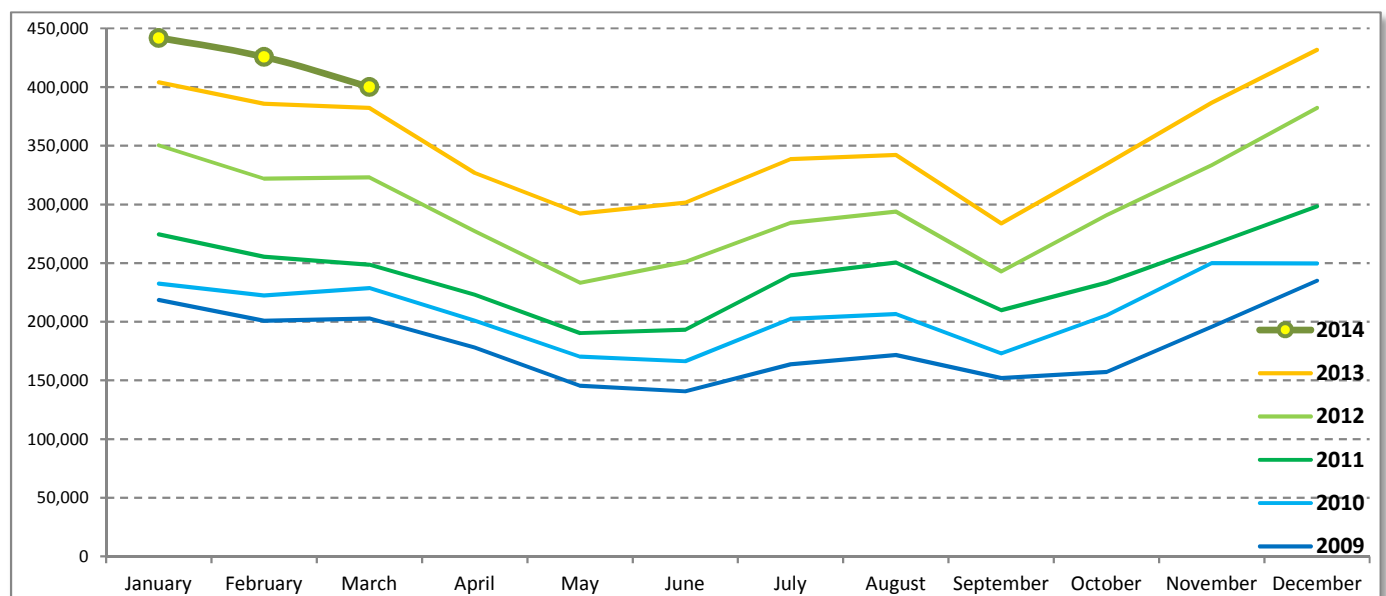
## Tourism Highlights

### International Tourist Arrivals, Average Length of Stay, Hotels Occupancy & Tourism Receipts 1993 - 2013

Years	Int'l Tourist Arrivals		Average Length of Stay (Days)	Hotels Occupancy (%)	Tourism Receipts (Million US\$)
	Number	Change (%)			
1993	118,183	-	N/A	N/A	N/A
1994	176,617	49.4	N/A	N/A	N/A
1995	219,680	24.4	8.00	37.00	100
1996	260,489	18.6	7.50	40.00	118
1997	218,843	-16.0	6.40	30.00	103
1998	286,524	30.9	5.20	40.00	166
1999	367,743	28.3	5.50	44.00	190
2000	466,365	26.8	5.50	45.00	228
2001	604,919	29.7	5.50	48.00	304
2002	786,524	30.0	5.80	50.00	379
2003	701,014	-10.9	5.50	50.00	347
2004	1,055,202	50.5	6.30	52.00	578
2005	1,421,615	34.7	6.30	52.00	832
2006	1,700,041	19.6	6.50	54.79	1,049
2007	2,015,128	18.5	6.50	54.79	1,400
2008	2,125,465	5.5	6.65	62.68	1,595
2009	2,161,577	1.7	6.45	63.57	1,561
2010	2,508,289	16.0	6.45	65.74	1,786
2011	2,881,862	14.9	6.50	66.15	1,912
2012	3,584,307	24.4	6.30	68.49	2,210
2013	4,210,165	17.5	6.75	69.53	2,547

### International tourist arrivals to Cambodia

Destination	Months	2009	2010	2011	2012	2013	2014	change (%) 2014*/13
<b>Cambodia</b>	<b>Q1</b>	<b>622,288</b>	<b>683,692</b>	<b>778,467</b>	<b>995,210</b>	<b>1,172,072</b>	<b>1,267,922</b>	<b>8.2</b>
<i>International tourist arrivals by all means of transportations</i>	January	218,691	232,590	274,471	350,257	404,106	442,045	9.4
	February	200,789	222,354	255,499	321,870	385,760	425,801	10.4
	March	202,808	228,748	248,497	323,083	382,206	400,076	4.7
	<b>Q2</b>	<b>464,230</b>	<b>537,464</b>	<b>606,562</b>	<b>761,442</b>	<b>920,527</b>	<b>0</b>	
	April	177,955	200,965	223,032	277,304	327,000		
	May	145,564	170,164	190,258	233,220	292,115		
	June	140,711	166,335	193,272	250,918	301,412		
	<b>Q3</b>	<b>487,422</b>	<b>582,024</b>	<b>699,760</b>	<b>820,888</b>	<b>964,612</b>	<b>0</b>	
	July	163,817	202,349	239,527	284,282	338,761		
	August	171,668	206,563	250,429	293,859	342,064		
	September	151,937	173,112	209,804	242,747	283,787		
	<b>Q4</b>	<b>587,637</b>	<b>705,109</b>	<b>797,073</b>	<b>1,006,767</b>	<b>1,152,954</b>	<b>0</b>	
October	157,105	205,515	233,190	290,959	334,410			
November	195,570	249,892	265,539	333,482	386,737			
December	234,962	249,702	298,344	382,326	431,807			
<b>Total</b>		<b>2,161,577</b>	<b>2,508,289</b>	<b>2,881,862</b>	<b>3,584,307</b>	<b>4,210,165</b>	<b>1,267,922</b>	<b>8.2</b>



Source: Statistics and Tourism Information Department, MOT

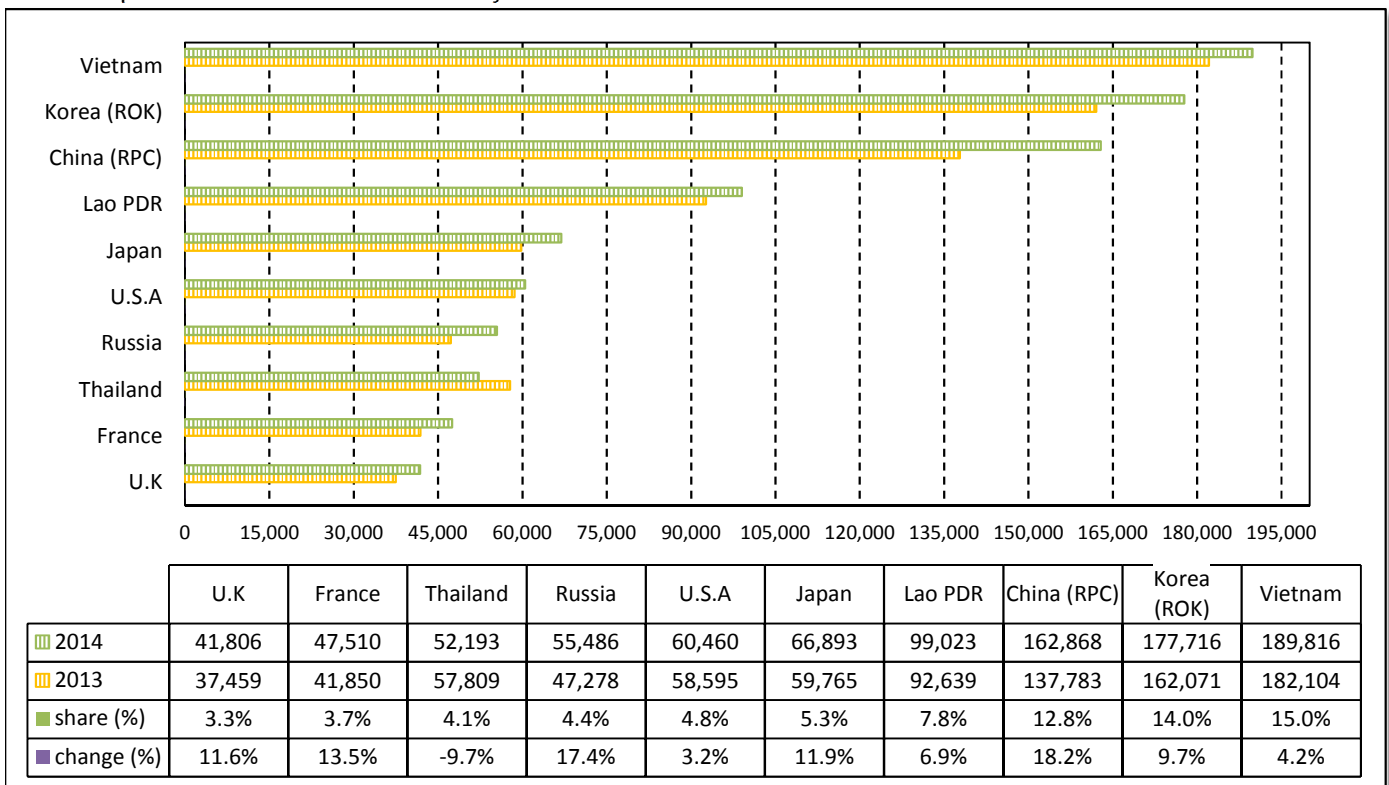
# TOURISM STATISTICS REPORT IN THE FIRST QUARTER 2014

## I. INBOUND TOURISM

### 1. International tourist arrivals to Cambodia in January - March 2014

	Inbound tourism		share (%)		change (%)
	2013	2014	2013	2014	2014*/13
<b>Air</b>	<b>611,160</b>	<b>698,969</b>	<b>52.1</b>	<b>55.1</b>	<b>14.4</b>
Phnom Penh Int'l Airport (PNH)	218,912	245,071	18.7	19.3	11.9
Siem Reap Int'l Airport (REP)	392,248	453,898	33.5	35.8	15.7
<b>Land and Water ways</b>	<b>560,912</b>	<b>568,953</b>	<b>47.9</b>	<b>44.9</b>	<b>1.4</b>
Land	535,718	536,588	45.7	42.3	0.2
Waterway	25,194	32,365	2.1	2.6	28.5
<b>Total</b>	<b>1,172,072</b>	<b>1,267,922</b>	<b>100.0</b>	<b>100.0</b>	<b>8.2</b>

### 2. Top ten markets arrivals in January - March 2014



## II. OUTBOUND TOURISM

### Outbound tourism in January - March 2014

	Outbound tourism		change (%)
	2013	2014	2014*/13
Cambodian Outbound Tourists	201,544	208,972	3.7
International Tourists Departure	1,182,291	1,270,810	7.5

## III. INTERNAL TOURISM

### Foreign visitor arrivals to the regions in January - March 2014

	Arrivals		share (%)		change (%)
	2013	2014	2013	2014	2014*/13
Phnom Penh & Surrounding	477,343	489,185	35.2	33.5	2.5
Siem Reap Angkor	694,729	778,737	51.2	53.4	12.1
Coastal Areas	165,646	170,967	12.2	11.7	3.2
Eco-tourism Areas	18,675	19,857	1.4	1.4	6.3
<b>Total</b>	<b>1,356,393</b>	<b>1,458,746</b>	<b>100.0</b>	<b>100.0</b>	<b>7.5</b>

## International Tourist Arrivals to Cambodia by Country of Residence in January - March 2014

(by all mean of transportations)

Regions Country of Residence	2013		2014			share		change	
			Purpose of Visit			Total	Female	2014*	2014*/13
			Holiday	Business	Other				
<b>GRAND TOTAL</b>	<b>1,172,072</b>	<b>1,212,114</b>	<b>48,825</b>	<b>6,983</b>	<b>1,267,922</b>	<b>600,961</b>	<b>100.0</b>	<b>8.2</b>	
<b>Asia and the Pacific</b>	<b>845,016</b>	<b>868,403</b>	<b>39,417</b>	<b>3,791</b>	<b>911,611</b>	<b>441,698</b>	<b>71.9</b>	<b>7.9</b>	
<b>ASEAN (South-East Asia)</b>	<b>406,814</b>	<b>411,440</b>	<b>11,291</b>	<b>1,505</b>	<b>424,236</b>	<b>212,961</b>	<b>33.5</b>	<b>4.3</b>	
Brunei Darussalam	190	210	5	14	229	113	0.0	20.5	
Indonesia	6,265	6,593	1,312	49	7,954	2,265	0.6	27.0	
Lao PDR	92,639	98,866	40	117	99,023	64,604	7.8	6.9	
Malaysia	28,777	30,693	2,012	65	32,770	10,797	2.6	13.9	
Myanmar	1,009	1,006	139	33	1,178	442	0.1	16.7	
Philippines	26,109	26,048	1,671	159	27,878	16,469	2.2	6.8	
Singapore	11,912	12,510	634	51	13,195	4,520	1.0	10.8	
Thailand	57,809	48,809	2,860	524	52,193	22,046	4.1	-9.7	
Vietnam	182,104	186,705	2,618	493	189,816	91,705	15.0	4.2	
<b>North-East Asia</b>	<b>388,002</b>	<b>408,277</b>	<b>25,265</b>	<b>1,573</b>	<b>435,115</b>	<b>206,527</b>	<b>34.3</b>	<b>12.1</b>	
China (RPC)	137,783	147,166	15,097	605	162,868	78,828	12.8	18.2	
Hong Kong SAR	2,339	1,659	58	2	1,719	816	0.1	-26.5	
Japan	59,765	63,052	3,386	455	66,893	28,613	5.3	11.9	
Korea (ROK)	162,071	173,552	3,665	499	177,716	87,401	14.0	9.7	
Mongolia	138	106	3	3	112	59	0.0	-18.8	
Taiwan, China	25,906	22,742	3,056	9	25,807	10,810	2.0	-0.4	
<b>Southern Asia</b>	<b>6,715</b>	<b>6,942</b>	<b>957</b>	<b>215</b>	<b>8,114</b>	<b>2,381</b>	<b>0.6</b>	<b>20.8</b>	
Afghanistan	58	93	3	2	98	30	0.0	69.0	
Bangladesh	424	239	51	44	334	76	0.0	-21.2	
Bhutan	32	20	0	3	23	11	0.0	-28.1	
India	5,277	5,848	675	109	6,632	2,036	0.5	25.7	
Nepal	341	274	53	9	336	83	0.0	-1.5	
Pakistan	228	197	66	25	288	46	0.0	26.3	
Srilanka	355	271	109	23	403	99	0.0	13.5	
<b>Western Asia</b>	<b>1,308</b>	<b>1,490</b>	<b>48</b>	<b>5</b>	<b>1,543</b>	<b>828</b>	<b>0.1</b>	<b>18.0</b>	
Kazakhstan	1,133	1,333	37	3	1,373	745	0.1	21.2	
Uzbekistan	175	157	11	2	170	83	0.0	-2.9	
<b>Oceania</b>	<b>40,778</b>	<b>39,613</b>	<b>1,805</b>	<b>463</b>	<b>41,881</b>	<b>18,624</b>	<b>3.3</b>	<b>2.7</b>	
Australia	36,060	34,766	1,479	412	36,657	16,355	2.9	1.7	
Fiji	26	35	7	3	45	16	0.0	73.1	
New Zealand	4,692	4,812	319	48	5,179	2,253	0.4	10.4	
Other Asia & the Pacific	1,399	641	51	30	722	377	0.1	-48.4	
<b>Europe</b>	<b>235,089</b>	<b>251,815</b>	<b>6,075</b>	<b>1,808</b>	<b>259,698</b>	<b>115,908</b>	<b>20.5</b>	<b>10.5</b>	
<b>Northern Europe</b>	<b>58,854</b>	<b>62,565</b>	<b>1,790</b>	<b>453</b>	<b>64,808</b>	<b>26,416</b>	<b>5.1</b>	<b>10.1</b>	
Denmark	4,125	5,148	107	29	5,284	2,269	0.4	28.1	
Finland	3,011	2,962	59	27	3,048	1,169	0.2	1.2	
Iceland	194	275	4	1	280	120	0.0	44.3	
Ireland	2,661	2,616	68	24	2,708	1,117	0.2	1.8	
Norway	3,828	3,752	64	14	3,830	1,709	0.3	0.1	
Sweden	7,576	7,672	141	39	7,852	3,155	0.6	3.6	
United Kingdom	37,459	40,140	1,347	319	41,806	16,877	3.3	11.6	
<b>Western Europe</b>	<b>97,311</b>	<b>99,988</b>	<b>3,133</b>	<b>1,079</b>	<b>104,200</b>	<b>44,256</b>	<b>8.2</b>	<b>7.1</b>	
Austria	3,870	3,669	60	13	3,742	1,524	0.3	-3.3	
Belgium	4,645	4,447	153	55	4,655	1,840	0.4	0.2	
France	41,850	44,892	1,967	651	47,510	20,322	3.7	13.5	
Germany	30,773	31,309	523	210	32,042	13,696	2.5	4.1	
Luxembourg	192	165	3	2	170	55	0.0	-11.5	
Monaco	16	27	2	0	29	9	0.0	81.3	
Netherlands	8,508	8,410	241	100	8,751	3,682	0.7	2.9	
Switzerland	7,457	7,069	184	48	7,301	3,128	0.6	-2.1	
<b>Central / Eastern Europe</b>	<b>61,222</b>	<b>70,542</b>	<b>620</b>	<b>123</b>	<b>71,285</b>	<b>37,074</b>	<b>5.6</b>	<b>16.4</b>	
Bulgaria	303	477	4	5	486	265	0.0	60.4	
Czech Republic	2,079	2,388	28	12	2,428	986	0.2	16.8	
Estonia	596	783	14	3	800	339	0.1	34.2	
Hungary	1,445	1,419	14	9	1,442	649	0.1	-0.2	
Lithuania	787	767	6	2	775	383	0.1	-1.5	
Poland	4,976	5,302	26	21	5,349	2,646	0.4	7.5	
Romania	522	643	22	5	670	356	0.1	28.4	
Russian Federation	47,278	54,990	450	46	55,486	29,490	4.4	17.4	
Slovakia	784	943	20	16	979	436	0.1	24.9	
Ukraine	2,452	2,830	36	4	2,870	1,524	0.2	17.0	

Source: Statistics and Tourism Information Department, MOT

## International Tourist Arrivals to Cambodia by Country of Residence in January - March 2014

(by all mean of transportations)

Regions Country of Residence	2013		2014			share		change	
			Purpose of Visit			Total	Female	(%)	(%)
			Holiday	Business	Other			2014*	2014*/13
<b>GRAND TOTAL</b>	<b>1,172,072</b>	<b>1,212,114</b>	<b>48,825</b>	<b>6,983</b>	<b>1,267,922</b>	<b>600,961</b>	<b>100.0</b>	<b>8.2</b>	
<b>Southern Europe</b>	<b>16,487</b>	<b>18,193</b>	<b>493</b>	<b>132</b>	<b>18,818</b>	<b>7,862</b>	<b>1.5</b>	<b>14.1</b>	
Croatia	304	334	9	1	344	164	0.0	13.2	
Greece	334	462	18	2	482	181	0.0	44.3	
Italy	8,066	9,600	224	45	9,869	3,995	0.8	22.4	
Portugal	1,056	930	22	6	958	428	0.1	-9.3	
Serbia	211	249	7	0	256	134	0.0	21.3	
Slovenia	490	454	5	0	459	205	0.0	-6.3	
Spain	4,492	4,701	131	56	4,888	2,236	0.4	8.8	
Turkey	1,534	1,463	77	22	1,562	519	0.1	1.8	
Other Europe	1,215	527	39	21	587	300	0.0	-51.7	
<b>Americas</b>	<b>86,306</b>	<b>86,337</b>	<b>3,143</b>	<b>1,291</b>	<b>90,771</b>	<b>41,041</b>	<b>7.2</b>	<b>5.2</b>	
Argentina	2,664	2,914	12	12	2,938	1,471	0.2	10.3	
Brazil	2,338	3,450	19	11	3,480	1,775	0.3	48.8	
Canada	18,653	18,605	594	123	19,322	8,589	1.5	3.6	
Chile	1,591	2,117	11	8	2,136	1,120	0.2	34.3	
Colombia	435	475	10	8	493	228	0.0	13.3	
Costa Rica	88	85	4	3	92	48	0.0	4.5	
Ecuador	81	80	5	3	88	42	0.0	8.6	
Mexico	1,006	1,039	14	4	1,057	505	0.1	5.1	
Peru	146	183	8	5	196	92	0.0	34.2	
United States	58,595	56,923	2,440	1,097	60,460	26,921	4.8	3.2	
Uruguay	91	100	0	1	101	49	0.0	11.0	
Other Americas	618	366	26	16	408	201	0.0	-34.0	
<b>Africa</b>	<b>1,630</b>	<b>1,248</b>	<b>124</b>	<b>44</b>	<b>1,416</b>	<b>593</b>	<b>0.1</b>	<b>-13.1</b>	
Cameroon	42	26	3	5	34	11	0.0	-19.0	
Congo	12	11	0	1	12	6	0.0	0.0	
Ghana	43	43	5	2	50	18	0.0	16.3	
Kenya	75	53	4	3	60	29	0.0	-20.0	
Liberia	12	10	0	0	10	2	0.0	-16.7	
Nigeria	148	67	52	9	128	14	0.0	-13.5	
Sudan	12	15	1	5	21	4	0.0	75.0	
South Africa	1,127	931	50	10	991	453	0.1	-12.1	
Uganda	19	10	0	2	12	6	0.0	-36.8	
Other Africa	140	82	9	7	98	50	0.0	-30.0	
<b>Middle East</b>	<b>4,031</b>	<b>4,311</b>	<b>66</b>	<b>49</b>	<b>4,426</b>	<b>1,721</b>	<b>0.3</b>	<b>9.8</b>	
Egypt	60	68	3	3	74	19	0.0	23.3	
Iran	202	168	9	2	179	40	0.0	-11.4	
Iraq	37	15	0	1	16	0	0.0	-56.8	
Israel	3,142	3,597	43	26	3,666	1,580	0.3	16.7	
Kuwait	305	234	1	10	245	13	0.0	-19.7	
Oman	40	51	0	0	51	4	0.0	27.5	
Palestine	19	19	1	0	20	7	0.0	5.3	
Qatar	50	10	0	0	10	4	0.0	-80.0	
Saudi Arabia	41	34	3	0	37	2	0.0	-9.8	
United Arab Emirates	26	15	0	0	15	2	0.0	-42.3	
Yemen	24	44	1	2	47	16	0.0	95.8	
Other Middle East	85	56	5	5	66	34	0.0	-22.4	

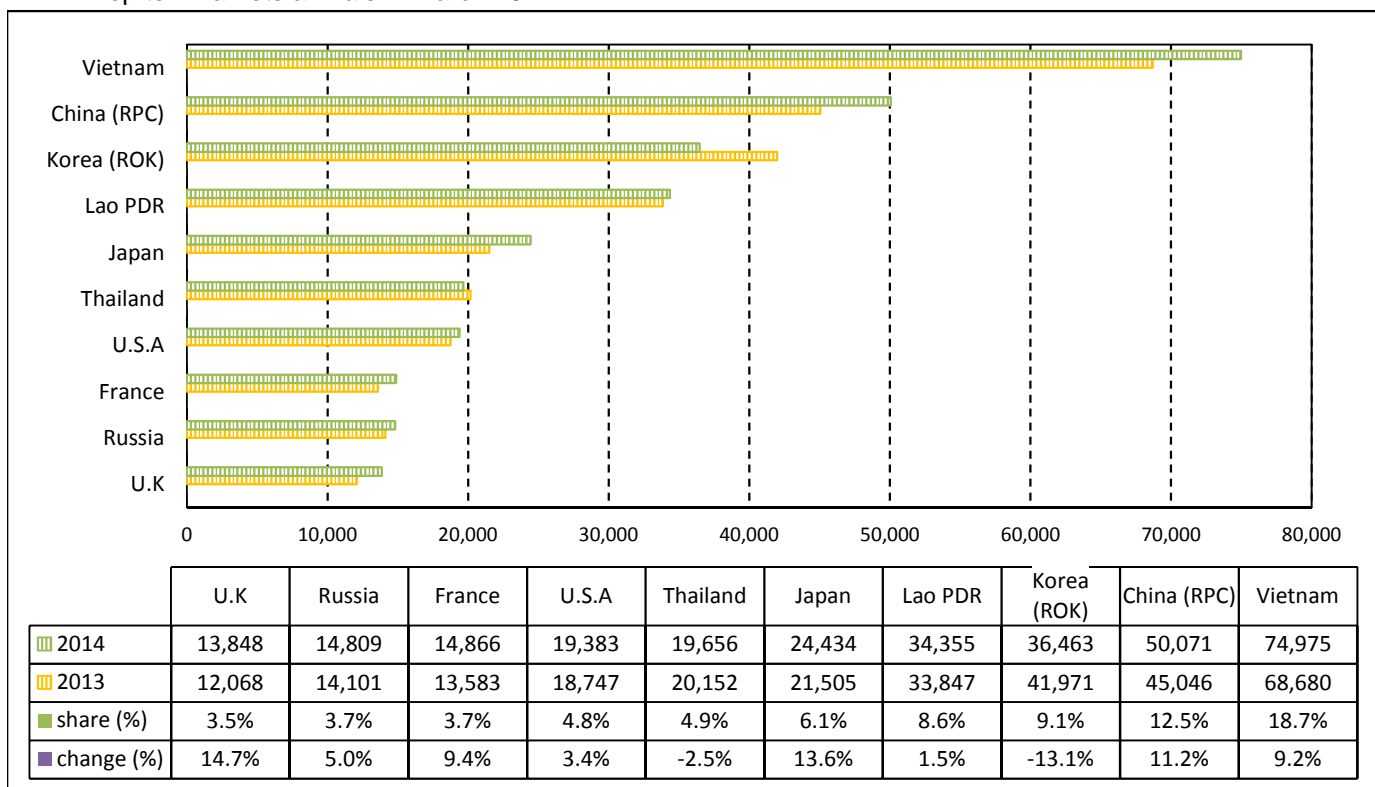
# TOURISM STATISTICS REPORT IN MARCH 2014

## I. INBOUND TOURISM

### 1. International tourist arrivals to Cambodia in March 2014

	Inbound tourism		share (%)		change (%)
	2013	2014	2013	2014	2014*/13
<b>Air</b>	<b>192,497</b>	<b>204,433</b>	<b>50.4</b>	<b>51.1</b>	<b>6.2</b>
Phnom Penh Int'l Airport (PNH)	77,375	77,468	20.2	19.4	0.1
Siem Reap Int'l Airport (REP)	115,122	126,965	30.1	31.7	10.3
<b>Land and Water ways</b>	<b>189,709</b>	<b>195,643</b>	<b>49.6</b>	<b>48.9</b>	<b>3.1</b>
Land	182,409	183,365	47.7	45.8	0.5
Waterway	7,300	12,278	1.9	3.1	68.2
<b>Total</b>	<b>382,206</b>	<b>400,076</b>	<b>100.0</b>	<b>100.0</b>	<b>4.7</b>

### 2. Top ten markets arrivals in March 2014



## II. OUTBOUND TOURISM

### Outbound tourism in March 2014

	Outbound tourism		change (%)
	2013	2014	2014*/13
Cambodian Outbound Tourists	64,565	72,430	12.2
International Tourists Departure	382,680	406,828	6.3

## III. INTERNAL TOURISM

### Foreign visitor arrivals to the regions in March 2014

	Arrivals		share (%)		change (%)
	2013	2014	2013	2014	2014*/13
Phnom Penh & Surrounding	167,460	169,896	38.4	37.2	1.5
Siem Reap Angkor	214,746	230,180	49.3	50.3	7.2
Coastal Areas	48,499	51,360	11.1	11.2	5.9
Eco-tourism Areas	5,304	5,870	1.2	1.3	10.7
<b>Total</b>	<b>436,009</b>	<b>457,306</b>	<b>100.0</b>	<b>100.0</b>	<b>4.9</b>

## International Tourist Arrivals to Cambodia by Country of Residence in March 2014

(by all mean of transportations)

Regions Country of Residence	2013	2014			Total	Female	share	change
		Purpose of Visit					(%)	(%)
		Holiday	Business	Other			2014*	2014*/13
<b>GRAND TOTAL</b>	<b>382,206</b>	<b>381,968</b>	<b>16,007</b>	<b>2,101</b>	<b>400,076</b>	<b>184,377</b>	<b>100.0</b>	<b>4.7</b>
<b>Asia and the Pacific</b>	<b>280,615</b>	<b>279,700</b>	<b>12,920</b>	<b>1,106</b>	<b>293,726</b>	<b>136,509</b>	<b>73.4</b>	<b>4.7</b>
<b>ASEAN (South-East Asia)</b>	<b>150,544</b>	<b>155,775</b>	<b>3,542</b>	<b>510</b>	<b>159,827</b>	<b>78,333</b>	<b>39.9</b>	<b>6.2</b>
Brunei Darussalam	99	94	0	3	97	51	0.0	-2.0
Indonesia	2,255	2,198	407	13	2,618	738	0.7	16.1
Lao PDR	33,847	34,274	21	60	34,355	22,688	8.6	1.5
Malaysia	11,138	12,401	564	13	12,978	4,015	3.2	16.5
Myanmar	320	392	52	20	464	175	0.1	45.0
Philippines	9,485	8,745	509	43	9,297	5,465	2.3	-2.0
Singapore	4,568	5,189	190	8	5,387	1,883	1.3	17.9
Thailand	20,152	18,435	1,008	213	19,656	8,622	4.9	-2.5
Vietnam	68,680	74,047	791	137	74,975	34,696	18.7	9.2
<b>North-East Asia</b>	<b>115,410</b>	<b>110,441</b>	<b>8,417</b>	<b>414</b>	<b>119,272</b>	<b>52,320</b>	<b>29.8</b>	<b>3.3</b>
China (RPC)	42,340	45,046	4,888	137	50,071	22,521	12.5	18.3
Hong Kong SAR	1,193	440	24	0	464	211	0.1	-61.1
Japan	21,505	23,033	1,259	142	24,434	9,785	6.1	13.6
Korea (ROK)	41,971	35,110	1,219	134	36,463	16,719	9.1	-13.1
Mongolia	51	28	2	1	31	15	0.0	-39.2
Taiwan, China	8,350	6,784	1,025	0	7,809	3,069	2.0	-6.5
<b>Southern Asia</b>	<b>2,264</b>	<b>2,295</b>	<b>332</b>	<b>59</b>	<b>2,686</b>	<b>699</b>	<b>0.7</b>	<b>18.6</b>
Afghanistan	21	45	2	2	49	16	0.0	133.3
Bangladesh	161	66	9	13	88	10	0.0	-45.3
Bhutan	11	3	0	1	4	1	0.0	-63.6
India	1,728	1,943	243	25	2,211	603	0.6	28.0
Nepal	120	92	18	3	113	30	0.0	-5.8
Pakistan	76	63	22	5	90	12	0.0	18.4
Sri Lanka	147	83	38	10	131	27	0.0	-10.9
<b>Western Asia</b>	<b>366</b>	<b>296</b>	<b>19</b>	<b>1</b>	<b>316</b>	<b>177</b>	<b>0.1</b>	<b>-13.7</b>
Kazakhstan	290	261	15	1	277	154	0.1	-4.5
Uzbekistan	76	35	4	0	39	23	0.0	-48.7
<b>Oceania</b>	<b>11,588</b>	<b>10,626</b>	<b>588</b>	<b>110</b>	<b>11,324</b>	<b>4,833</b>	<b>2.8</b>	<b>-2.3</b>
Australia	10,198	9,298	484	99	9,881	4,226	2.5	-3.1
Fiji	9	16	4	0	20	4	0.0	122.2
New Zealand	1,381	1,312	100	11	1,423	603	0.4	3.0
Other Asia & the Pacific	443	267	22	12	301	147	0.1	-32.1
<b>Europe</b>	<b>72,649</b>	<b>73,872</b>	<b>2,036</b>	<b>566</b>	<b>76,474</b>	<b>34,478</b>	<b>19.1</b>	<b>5.3</b>
<b>Northern Europe</b>	<b>18,014</b>	<b>19,133</b>	<b>584</b>	<b>162</b>	<b>19,879</b>	<b>8,361</b>	<b>5.0</b>	<b>10.4</b>
Denmark	1,211	1,258	32	9	1,299	533	0.3	7.3
Finland	780	730	14	10	754	300	0.2	-3.3
Iceland	56	148	4	1	153	63	0.0	173.2
Ireland	794	739	14	5	758	322	0.2	-4.5
Norway	1,301	1,072	24	9	1,105	518	0.3	-15.1
Sweden	1,804	1,904	41	17	1,962	815	0.5	8.8
United Kingdom	12,068	13,282	455	111	13,848	5,810	3.5	14.7
<b>Western Europe</b>	<b>30,951</b>	<b>30,508</b>	<b>1,037</b>	<b>320</b>	<b>31,865</b>	<b>13,651</b>	<b>8.0</b>	<b>3.0</b>
Austria	992	993	11	5	1,009	428	0.3	1.7
Belgium	1,527	1,261	48	7	1,316	521	0.3	-13.8
France	13,583	14,030	650	186	14,866	6,354	3.7	9.4
Germany	10,165	10,331	172	78	10,581	4,658	2.6	4.1
Luxembourg	86	45	1	0	46	13	0.0	-46.5
Monaco	4	6	2	0	8	2	0.0	100.0
Netherlands	2,544	2,234	98	33	2,365	976	0.6	-7.0
Switzerland	2,050	1,608	55	11	1,674	699	0.4	-18.3
<b>Central / Eastern Europe</b>	<b>18,113</b>	<b>18,664</b>	<b>224</b>	<b>34</b>	<b>18,922</b>	<b>9,981</b>	<b>4.7</b>	<b>4.5</b>
Bulgaria	101	172	0	3	175	98	0.0	73.3
Czech Republic	651	644	8	3	655	262	0.2	0.6
Estonia	167	174	4	0	178	80	0.0	6.6
Hungary	398	327	2	1	330	143	0.1	-17.1
Lithuania	281	265	2	0	267	131	0.1	-5.0
Poland	1,462	1,418	8	4	1,430	701	0.4	-2.2
Romania	155	188	7	1	196	105	0.0	26.5
Russian Federation	14,101	14,619	174	16	14,809	8,013	3.7	5.0
Slovakia	217	288	7	3	298	151	0.1	37.3
Ukraine	580	569	12	3	584	297	0.1	0.7

Source: Statistics and Tourism Information Department, MOT

## International Tourist Arrivals to Cambodia by Country of Residence in March 2014

(by all mean of transportations)

Regions Country of Residence	2013	2014			Total	Female	share	change
		Purpose of Visit					(%)	(%)
		Holiday	Business	Other			2014*	2014*/13
<b>GRAND TOTAL</b>	<b>382,206</b>	<b>381,968</b>	<b>16,007</b>	<b>2,101</b>	<b>400,076</b>	<b>184,377</b>	<b>100.0</b>	<b>4.7</b>
<b>Southern Europe</b>	<b>5,215</b>	<b>5,321</b>	<b>176</b>	<b>39</b>	<b>5,536</b>	<b>2,350</b>	<b>1.4</b>	<b>6.2</b>
Croatia	87	86	2	1	89	45	0.0	2.3
Greece	137	65	10	1	76	21	0.0	-44.5
Italy	2,252	2,896	91	12	2,999	1,244	0.7	33.2
Portugal	426	272	5	4	281	122	0.1	-34.0
Serbia	41	46	3	0	49	31	0.0	19.5
Slovenia	66	128	0	0	128	58	0.0	93.9
Spain	1,724	1,418	43	10	1,471	692	0.4	-14.7
Turkey	482	410	22	11	443	137	0.1	-8.1
Other Europe	356	246	15	11	272	135	0.1	-23.6
<b>Americas</b>	<b>27,189</b>	<b>26,941</b>	<b>982</b>	<b>394</b>	<b>28,317</b>	<b>12,761</b>	<b>7.1</b>	<b>4.1</b>
Argentina	737	836	8	5	849	404	0.2	15.2
Brazil	577	1,033	9	8	1,050	570	0.3	82.0
Canada	5,717	5,526	178	28	5,732	2,576	1.4	0.3
Chile	465	481	4	3	488	266	0.1	4.9
Colombia	131	114	3	2	119	59	0.0	-9.2
Costa Rica	10	21	1	1	23	15	0.0	130.0
Ecuador	22	15	1	1	17	10	0.0	-22.7
Mexico	459	367	2	2	371	167	0.1	-19.2
Peru	79	47	0	2	49	20	0.0	-38.0
United States	18,747	18,284	765	334	19,383	8,557	4.8	3.4
Uruguay	18	38	0	0	38	22	0.0	111.1
Other Americas	227	179	11	8	198	95	0.0	-12.8
<b>Africa</b>	<b>500</b>	<b>336</b>	<b>45</b>	<b>22</b>	<b>403</b>	<b>174</b>	<b>0.1</b>	<b>-19.4</b>
Cameroon	11	8	1	0	9	3	0.0	-18.2
Congo	4	4	0	1	5	4	0.0	25.0
Ghana	3	0	0	1	1	0	0.0	-66.7
Kenya	32	18	1	2	21	11	0.0	-34.4
Liberia	6	1	0	0	1	0	0.0	-83.3
Nigeria	39	24	14	6	44	3	0.0	12.8
Sudan	1	3	1	2	6	0	0.0	500.0
South Africa	351	253	25	4	282	136	0.1	-19.7
Uganda	7	4	0	2	6	3	0.0	-14.3
Other Africa	46	21	3	4	28	14	0.0	-39.1
<b>Middle East</b>	<b>1,253</b>	<b>1,119</b>	<b>24</b>	<b>13</b>	<b>1,156</b>	<b>455</b>	<b>0.3</b>	<b>-7.7</b>
Egypt	19	19	2	1	22	5	0.0	15.8
Iran	73	73	0	1	74	16	0.0	1.4
Iraq	23	8	0	0	8	0	0.0	-65.2
Israel	946	885	19	7	911	408	0.2	-3.7
Kuwait	73	56	0	0	56	3	0.0	-23.3
Oman	14	13	0	0	13	1	0.0	-7.1
Palestine	9	9	0	0	9	3	0.0	0.0
Qatar	36	2	0	0	2	2	0.0	-94.4
Saudi Arabia	10	14	0	0	14	0	0.0	40.0
United Arab Emirates	12	6	0	0	6	0	0.0	-50.0
Yemen	9	19	1	2	22	7	0.0	144.4
Other Middle East	29	15	2	2	19	10	0.0	-34.5



**COMPILED BY:**

1. Mr. Kong Sopheareak

Director  
Statistics & Tourism Information Department  
Fax: +855 23 885003  
E-mail: kong@mot.gov.kh

2. Mr. Horth Vanny

Chief of Tourism Statistics Office  
Compile and data analysis  
Tel.: +855 12 827664