



KINGDOM OF CAMBODIA
NATION RELIGION KING



TOURISM STATISTICS REPORT

January 2014

MINISTRY OF TOURISM

Statistics and Tourism Information Department

No. A3, Street 169, Sangkat Veal Vong, Khan 7 Makara, Phnom Penh, Cambodia.

Fax: +855 23 885003

E-mail: kong@mot.gov.kh

Web site: www.mot.gov.kh

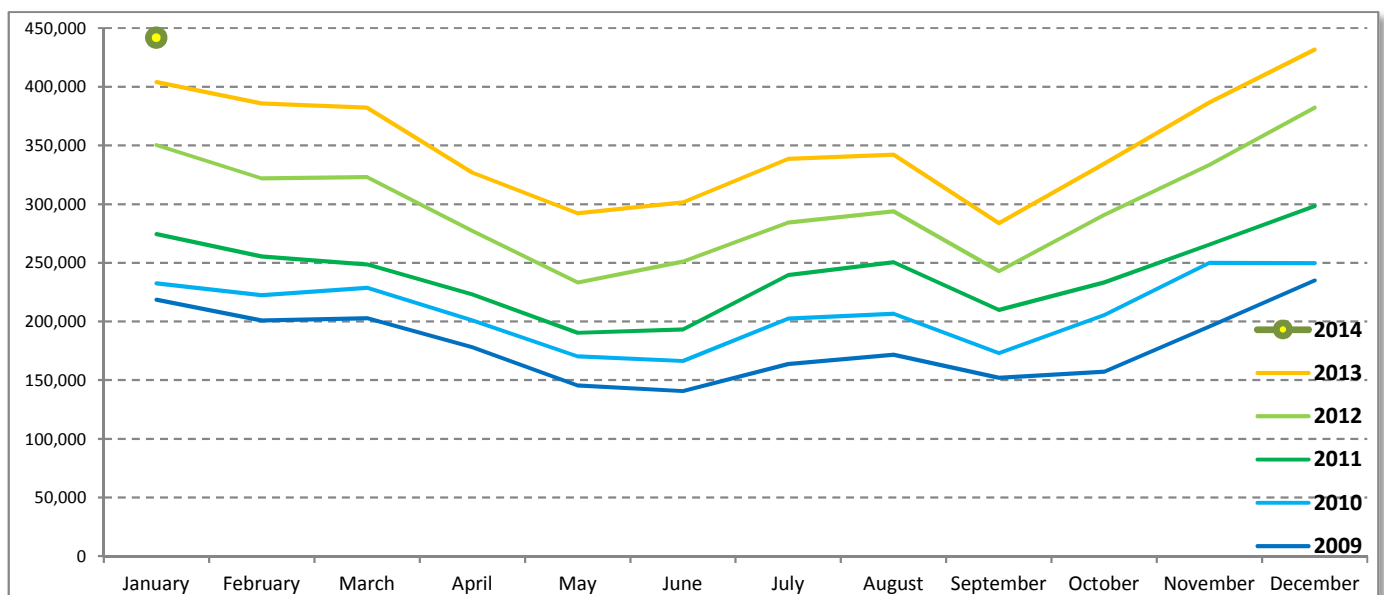
Tourism Highlights

International Tourist Arrivals, Average Length of Stay, Hotels Occupancy & Tourism Receipts 1993 - 2013

Years	Int'l Tourist Arrivals		Average Length of Stay (Days)	Hotels Occupancy (%)	Tourism Receipts (Million US\$)
	Number	Change (%)			
1993	118,183	-	N/A	N/A	N/A
1994	176,617	49.4	N/A	N/A	N/A
1995	219,680	24.4	8.00	37.00	100
1996	260,489	18.6	7.50	40.00	118
1997	218,843	-16.0	6.40	30.00	103
1998	286,524	30.9	5.20	40.00	166
1999	367,743	28.3	5.50	44.00	190
2000	466,365	26.8	5.50	45.00	228
2001	604,919	29.7	5.50	48.00	304
2002	786,524	30.0	5.80	50.00	379
2003	701,014	-10.9	5.50	50.00	347
2004	1,055,202	50.5	6.30	52.00	578
2005	1,421,615	34.7	6.30	52.00	832
2006	1,700,041	19.6	6.50	54.79	1,049
2007	2,015,128	18.5	6.50	54.79	1,400
2008	2,125,465	5.5	6.65	62.68	1,595
2009	2,161,577	1.7	6.45	63.57	1,561
2010	2,508,289	16.0	6.45	65.74	1,786
2011	2,881,862	14.9	6.50	66.15	1,912
2012	3,584,307	24.4	6.30	68.49	2,210
2013	4,210,165	17.5	6.75	69.53	2,547

International tourist arrivals to Cambodia

Destination	Months	2009	2010	2011	2012	2013	2014	change (%) 2014*/13
Cambodia	Q1	622,288	683,692	778,467	995,210	1,172,072	442,045	
<i>International tourist arrivals by all means of transportations</i>	January	218,691	232,590	274,471	350,257	404,106	442,045	9.4
	February	200,789	222,354	255,499	321,870	385,760		
	March	202,808	228,748	248,497	323,083	382,206		
	Q2	464,230	537,464	606,562	761,442	920,527	0	
	April	177,955	200,965	223,032	277,304	327,000		
	May	145,564	170,164	190,258	233,220	292,115		
	June	140,711	166,335	193,272	250,918	301,412		
	Q3	487,422	582,024	699,760	820,888	964,612	0	
	July	163,817	202,349	239,527	284,282	338,761		
	August	171,668	206,563	250,429	293,859	342,064		
	September	151,937	173,112	209,804	242,747	283,787		
	Q4	587,637	705,109	797,073	1,006,767	1,152,954	0	
	October	157,105	205,515	233,190	290,959	334,410		
	November	195,570	249,892	265,539	333,482	386,737		
	December	234,962	249,702	298,344	382,326	431,807		
	Total	2,161,577	2,508,289	2,881,862	3,584,307	4,210,165	442,045	9.4



Source: Statistics and Tourism Information Department, MOT

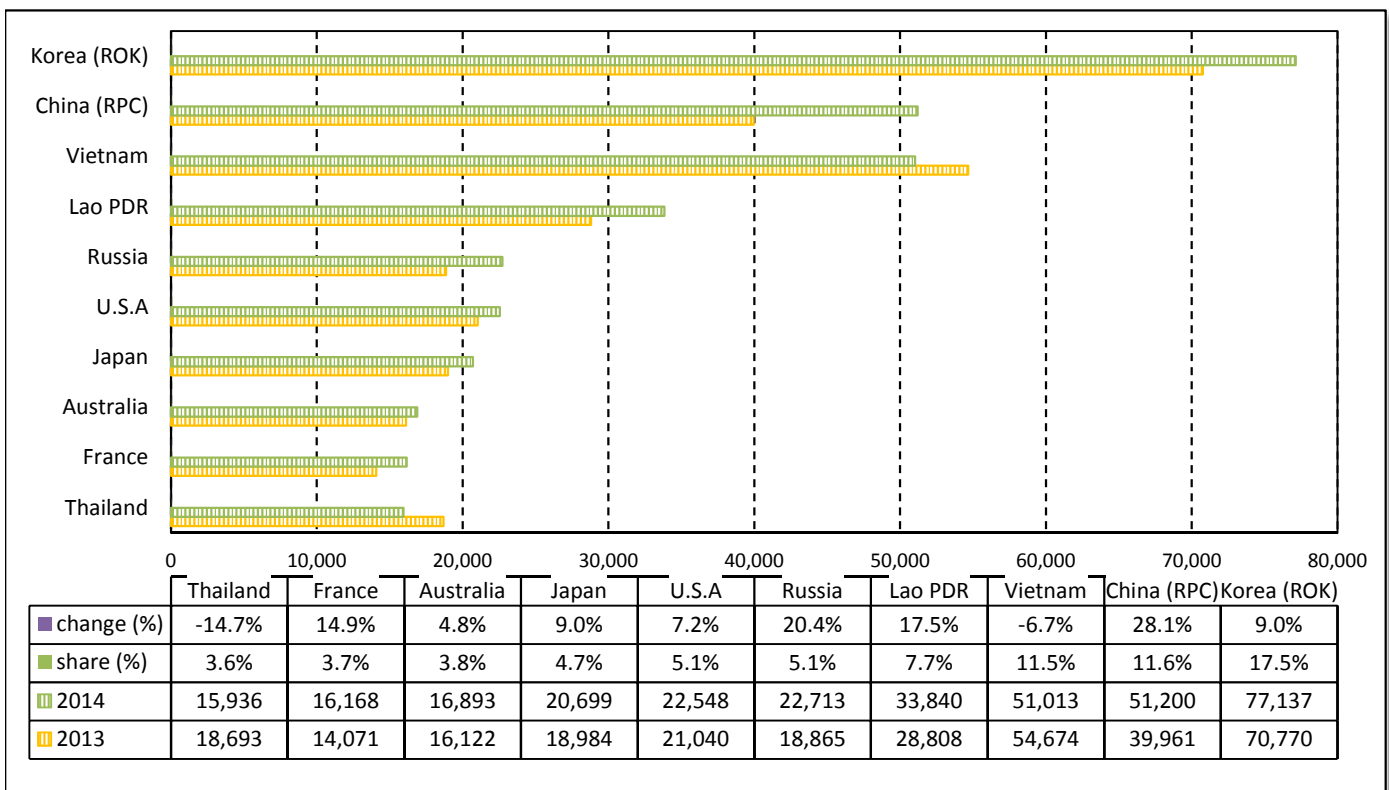
TOURISM STATISTICS REPORT IN JANUARY 2014

I. INBOUND TOURISM

1. International tourist arrivals to Cambodia in January 2014

	Inbound tourism		share (%)		change (%)
	2013	2014	2013	2014	2014*/13
Air	215,210	253,930	53.3	57.4	18.0
Phnom Penh Int'l Airport (PNH)	72,549	84,436	18.0	19.1	16.4
Siem Reap Int'l Airport (REP)	142,661	169,494	35.3	38.3	18.8
Land and Water ways	188,896	188,115	46.7	42.6	-0.4
Land	179,273	177,854	44.4	40.2	-0.8
Waterway	9,623	10,261	2.4	2.3	6.6
Total	404,106	442,045	100.0	100.0	9.4

2. Top ten markets arrivals in January 2014



II. OUTBOUND TOURISM

Outbound tourism in January 2014

	Outbound tourism		change (%)
	2013	2014	2014*/13
Cambodian Outbound Tourists	71,720	68,618	-4.3
International Tourists Departure	413,103	447,276	8.3

III. INTERNAL TOURISM

Foreigner visitor arrivals to the regions in January 2014

	Arrivals		share (%)		change (%)
	2013	2014	2013	2014	2014*/13
Phnom Penh & Arrounding	155,492	155,714	33.5	29.3	0.1
Siem Reap Angkor	248,614	286,331	53.5	53.9	15.2
Coastal Areas	53,642	81,263	11.6	15.3	51.5
Eco-tourism Areas	6,643	8,362	1.4	1.6	25.9
Total	464,391	531,670	100.0	100.0	14.5

International Tourist Arrivals to Cambodia by Country of Residence in January 2014

(by all mean of transportations)

Regions Country of Residence	2013	2014			Total	Female	share	change
		Purpose of Visit					(%)	(%)
		Holiday	Business	Other			2014*	2014*/13
GRAND TOTAL	404,106	424,842	14,461	2,742	442,045	213,702	100.0	9.4
Asia and the Pacific	286,380	296,694	10,831	1,446	308,971	154,712	69.9	7.9
ASEAN (South-East Asia)	126,002	122,695	3,513	531	126,739	65,280	28.7	0.6
Brunei Darussalam	37	57	4	5	66	30	0.0	78.4
Indonesia	2,262	2,146	458	20	2,624	803	0.6	16.0
Lao PDR	28,808	33,795	10	35	33,840	21,870	7.7	17.5
Malaysia	9,281	8,478	556	25	9,059	3,133	2.0	-2.4
Myanmar	329	313	65	10	388	131	0.1	17.9
Philippines	8,062	8,999	686	74	9,759	5,824	2.2	21.0
Singapore	3,856	3,862	170	22	4,054	1,408	0.9	5.1
Thailand	18,693	14,797	921	218	15,936	6,280	3.6	-14.7
Vietnam	54,674	50,248	643	122	51,013	25,801	11.5	-6.7
North-East Asia	138,958	151,885	6,222	619	158,726	79,002	35.9	14.2
China (RPC)	39,961	47,936	3,010	254	51,200	26,888	11.6	28.1
Hong Kong SAR	597	688	18	2	708	355	0.2	18.6
Japan	18,984	19,425	1,085	189	20,699	9,590	4.7	9.0
Korea (ROK)	70,770	75,685	1,289	163	77,137	38,162	17.5	9.0
Mongolia	42	48	0	2	50	30	0.0	19.0
Taiwan, China	8,604	8,103	820	9	8,932	3,977	2.0	3.8
Southern Asia	2,291	2,725	341	76	3,142	1,043	0.7	37.1
Afghanistan	20	13	0	0	13	2	0.0	-35.0
Bangladesh	128	93	17	19	129	37	0.0	0.8
Bhutan	10	15	0	1	16	9	0.0	60.0
India	1,819	2,376	229	30	2,635	899	0.6	44.9
Nepal	132	82	20	5	107	28	0.0	-18.9
Pakistan	93	54	32	15	101	21	0.0	8.6
Sri Lanka	89	92	43	6	141	47	0.0	58.4
Western Asia	486	741	17	3	761	413	0.2	56.6
Kazakhstan	437	671	13	2	686	383	0.2	57.0
Uzbekistan	49	70	4	1	75	30	0.0	53.1
Oceania	18,336	18,419	725	206	19,350	8,831	4.4	5.5
Australia	16,122	16,125	584	184	16,893	7,718	3.8	4.8
Fiji	9	6	2	3	11	7	0.0	22.2
New Zealand	2,205	2,288	139	19	2,446	1,106	0.6	10.9
Other Asia & the Pacific	307	229	13	11	253	143	0.1	-17.6
Europe	84,830	93,767	2,375	756	96,898	42,682	21.9	14.2
Northern Europe	20,732	22,812	708	174	23,694	9,247	5.4	14.3
Denmark	1,395	1,823	46	4	1,873	789	0.4	34.3
Finland	1,242	1,266	28	12	1,306	489	0.3	5.2
Iceland	88	73	0	0	73	31	0.0	-17.0
Ireland	973	1,084	37	11	1,132	475	0.3	16.3
Norway	1,282	1,325	16	3	1,344	561	0.3	4.8
Sweden	3,188	3,100	61	15	3,176	1,207	0.7	-0.4
United Kingdom	12,564	14,141	520	129	14,790	5,695	3.3	17.7
Western Europe	33,775	35,223	1,220	458	36,901	15,471	8.3	9.3
Austria	1,540	1,361	28	2	1,391	543	0.3	-9.7
Belgium	1,545	1,598	64	25	1,687	675	0.4	9.2
France	14,071	15,099	771	298	16,168	6,859	3.7	14.9
Germany	10,346	10,644	189	68	10,901	4,614	2.5	5.4
Luxembourg	39	72	2	0	74	29	0.0	89.7
Monaco	8	20	0	0	20	6	0.0	150.0
Netherlands	3,224	3,309	94	47	3,450	1,439	0.8	7.0
Switzerland	3,002	3,120	72	18	3,210	1,306	0.7	6.9
Central / Eastern Europe	23,952	28,595	245	59	28,899	14,869	6.5	20.7
Bulgaria	124	172	1	2	175	90	0.0	41.1
Czech Republic	673	913	13	8	934	384	0.2	38.8
Estonia	225	266	2	0	268	118	0.1	19.1
Hungary	508	548	8	6	562	268	0.1	10.6
Lithuania	235	281	4	2	287	139	0.1	22.1
Poland	1,700	1,926	10	10	1,946	939	0.4	14.5
Romania	173	239	10	2	251	132	0.1	45.1
Russian Federation	18,865	22,513	177	23	22,713	11,921	5.1	20.4
Slovakia	292	366	5	6	377	147	0.1	29.1
Ukraine	1,157	1,371	15	0	1,386	731	0.3	19.8

International Tourist Arrivals to Cambodia by Country of Residence in January 2014

(by all mean of transportations)

Regions Country of Residence	2013		2014			share		change
		Purpose of Visit			Total	Female	2014*	2014*/13
		Holiday	Business	Other				
GRAND TOTAL	404,106	424,842	14,461	2,742	442,045	213,702	100.0	9.4
Southern Europe	6,104	6,953	191	59	7,203	2,980	1.6	18.0
Croatia	130	147	2	0	149	72	0.0	14.6
Greece	110	186	4	1	191	77	0.0	73.6
Italy	3,157	3,682	87	20	3,789	1,548	0.9	20.0
Portugal	322	334	8	2	344	149	0.1	6.8
Serbia	99	105	3	0	108	52	0.0	9.1
Slovenia	292	169	2	0	171	71	0.0	-41.4
Spain	1,451	1,759	57	28	1,844	820	0.4	27.1
Turkey	543	571	28	8	607	191	0.1	11.8
Other Europe	267	184	11	6	201	115	0.0	-24.7
Americas	30,912	32,110	1,184	508	33,802	15,370	7.6	9.3
Argentina	1,183	1,191	3	3	1,197	607	0.3	1.2
Brazil	1,026	1,578	6	3	1,587	792	0.4	54.7
Canada	6,419	6,588	192	53	6,833	2,967	1.5	6.4
Chile	395	651	2	2	655	336	0.1	65.8
Colombia	228	263	4	1	268	116	0.1	17.5
Costa Rica	64	50	1	1	52	28	0.0	-18.8
Ecuador	28	37	4	1	42	21	0.0	50.0
Mexico	274	382	10	1	393	179	0.1	43.4
Peru	32	64	5	1	70	38	0.0	118.8
United States	21,040	21,164	949	435	22,548	10,214	5.1	7.2
Uruguay	41	27	0	1	28	9	0.0	-31.7
Other Americas	182	115	8	6	129	63	0.0	-29.1
Africa	611	562	49	20	631	258	0.1	3.3
Cameroon	18	7	2	5	14	8	0.0	-22.2
Congo	4	6	0	0	6	2	0.0	50.0
Ghana	30	4	1	1	6	0	0.0	-80.0
Kenya	15	17	3	1	21	7	0.0	40.0
Liberia	4	6	0	0	6	1	0.0	50.0
Nigeria	61	21	24	3	48	6	0.0	-21.3
Sudan	6	12	0	3	15	4	0.0	150.0
South Africa	402	444	16	5	465	204	0.1	15.7
Uganda	9	2	0	0	2	1	0.0	-77.8
Other Africa	62	43	3	2	48	25	0.0	-22.6
Middle East	1,373	1,709	22	12	1,743	680	0.4	26.9
Egypt	21	24	1	2	27	7	0.0	28.6
Iran	60	59	3	0	62	13	0.0	3.3
Iraq	6	3	0	0	3	0	0.0	-50.0
Israel	1,090	1,440	15	4	1,459	628	0.3	33.9
Kuwait	103	82	1	4	87	5	0.0	-15.5
Oman	12	28	0	0	28	2	0.0	133.3
Palestine	7	1	1	0	2	0	0.0	-71.4
Qatar	8	2	0	0	2	0	0.0	-75.0
Saudi Arabia	9	17	0	0	17	2	0.0	88.9
United Arab Emirates	11	7	0	0	7	1	0.0	-36.4
Yemen	6	15	0	0	15	5	0.0	150.0
Other Middle East	40	31	1	2	34	17	0.0	-15.0

COMPILED BY:

1. Mr. Kong Sopheareak

Director
Statistics & Tourism Information Department
Fax: +855 23 885003
E-mail: kong@mot.gov.kh

2. Mr. Horth Vanny

Chief of Tourism Statistics Office
Compile and data analysis
Tel.: +855 12 827664