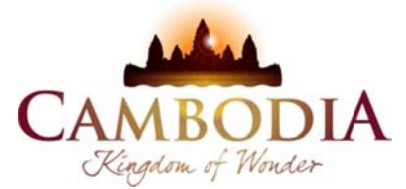




KINGDOM OF CAMBODIA
NATION RELIGION KING



TOURISM STATISTICS REPORT

August 2013

MINISTRY OF TOURISM

Statistics and Tourism Information Department

No. A3, Street 169, Sangkat Veal Vong, Khan 7 Makara, Phnom Penh, Cambodia.

Fax: +855 23 885003

E-mail: kong@mot.gov.kh

Web site: www.mot.gov.kh

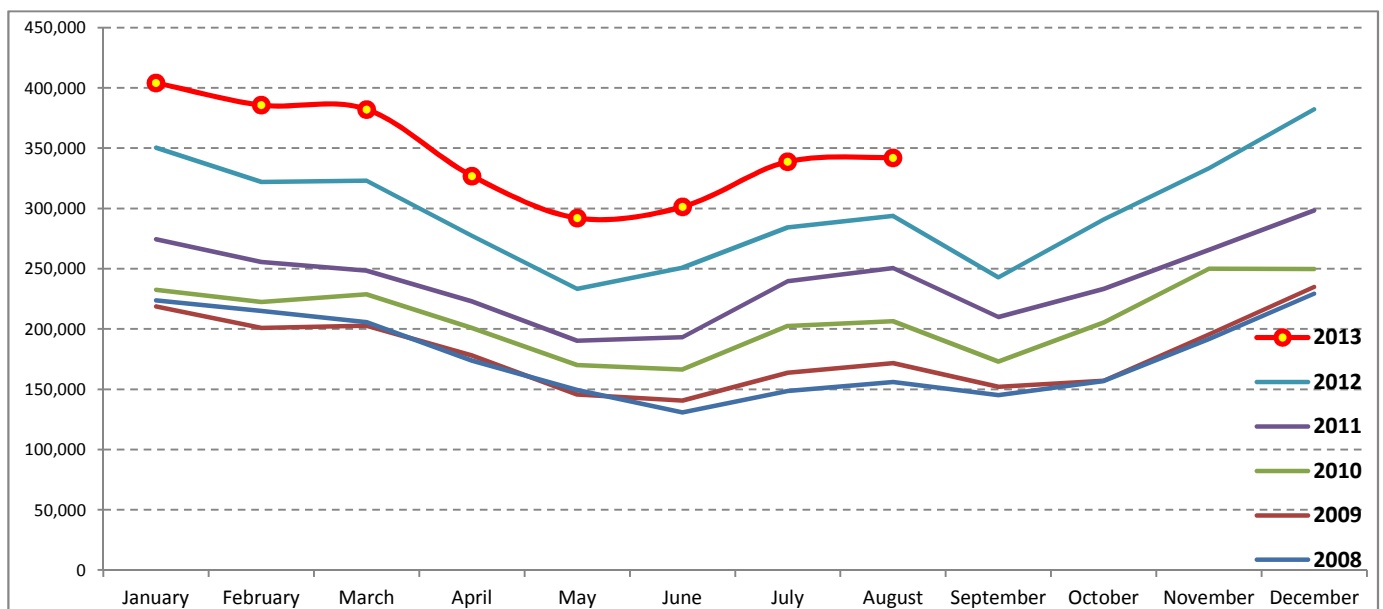
Tourism Highlights

International Tourist Arrivals, Average Length of Stay, Hotels Occupancy & Tourism Receipts 1993 - 2012

Years	Tourist Arrivals		Average Length	Hotels Occupancy	Tourism Receipts
	number	change (%)	of Stay (days)	(%)	(Million US\$)
1993	118,183	-	N/A	N/A	N/A
1994	176,617	49.4	N/A	N/A	N/A
1995	219,680	24.4	8.00	37.00	100
1996	260,489	18.6	7.50	40.00	118
1997	218,843	-16.0	6.40	30.00	103
1998	286,524	30.9	5.20	40.00	166
1999	367,743	28.3	5.50	44.00	190
2000	466,365	26.8	5.50	45.00	228
2001	604,919	29.7	5.50	48.00	304
2002	786,524	30.0	5.80	50.00	379
2003	701,014	-10.9	5.50	50.00	347
2004	1,055,202	50.5	6.30	52.00	578
2005	1,421,615	34.7	6.30	52.00	832
2006	1,700,041	19.6	6.50	54.79	1,049
2007	2,015,128	18.5	6.50	54.79	1,400
2008	2,125,465	5.5	6.65	62.68	1,595
2009	2,161,577	1.7	6.45	63.57	1,561
2010	2,508,289	16.0	6.45	65.74	1,786
2011	2,881,862	14.9	6.50	66.15	1,912
2012	3,584,307	24.4	6.30	68.49	2,210

International tourist arrivals to Cambodia

Destination	Months	2008	2009	2010	2011	2012	2013	change (%) 2013*/12
Cambodia	Q1	644,205	622,288	683,692	778,467	995,210	1,172,072	17.8
<i>International tourist arrivals by all means of transportations</i>	January	223,581	218,691	232,590	274,471	350,257	404,106	15.4
	February	214,902	200,789	222,354	255,499	321,870	385,760	19.8
	March	205,722	202,808	228,748	248,497	323,083	382,206	18.3
	Q2	454,031	464,230	537,464	606,562	761,442	920,527	20.9
	April	173,903	177,955	200,965	223,032	277,304	327,000	17.9
	May	149,275	145,564	170,164	190,258	233,220	292,115	25.3
	June	130,853	140,711	166,335	193,272	250,918	301,412	20.1
	Q3	449,693	487,422	582,024	699,760	820,888	680,825	
	July	148,449	163,817	202,349	239,527	284,282	338,761	19.2
	August	156,098	171,668	206,563	250,429	293,859	342,064	16.4
	September	145,146	151,937	173,112	209,804	242,747		
	Q4	577,536	587,637	705,109	797,073	1,006,767	0	
	October	156,718	157,105	205,515	233,190	290,959		
	November	191,549	195,570	249,892	265,539	333,482		
	December	229,269	234,962	249,702	298,344	382,326		
	Total	2,125,465	2,161,577	2,508,289	2,881,862	3,584,307	2,773,424	18.8



Source: Statistics and Tourism Information Department, MOT

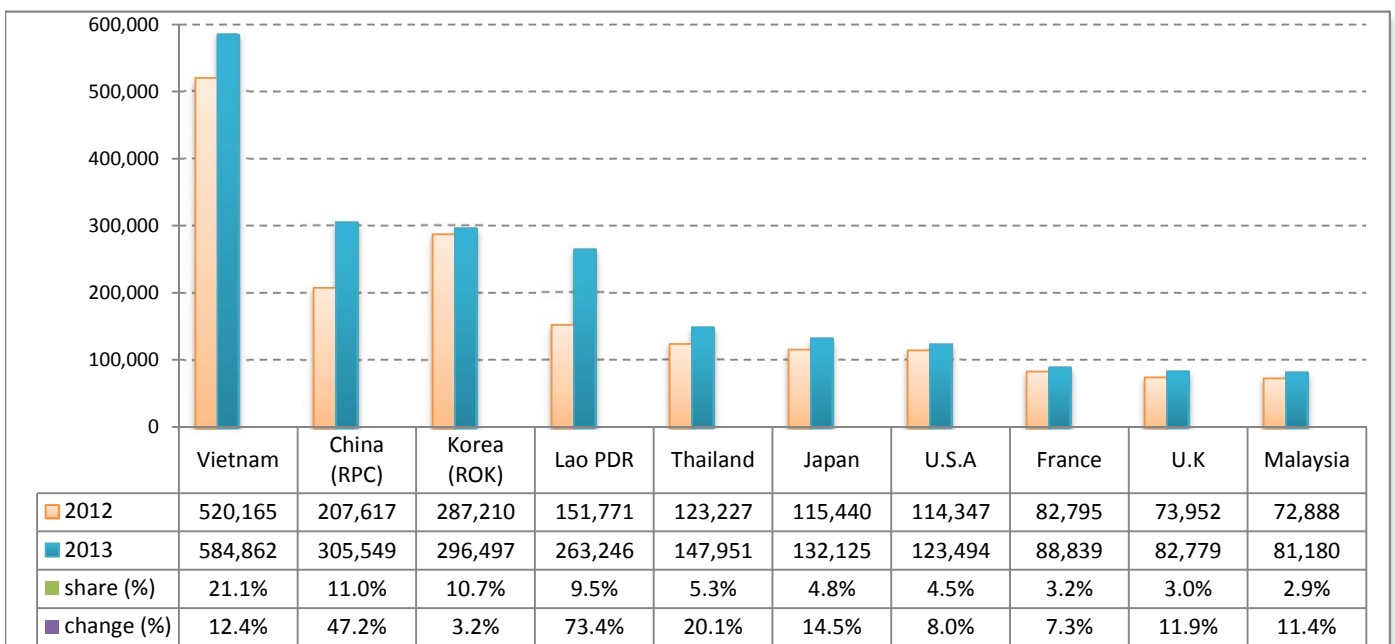
Executive Summary Report in the First Eight Months of 2013

I. International tourist arrivals to Cambodia in January - August 2013 was: **2,773,424**

II. Mode of arrivals

	arrivals	share (%)
Air	1,307,769	47.2
Phnom Penh Int'l Airport	541,613	19.5
Siem Reap Int'l Airport	766,156	27.6
Land and Water ways	1,465,655	52.8
Land	1,419,430	51.2
Waterway	46,225	1.7
Total	2,773,424	100.0

III. Top ten markets arrivals in January - August 2013



IV. International tourist arrivals to Cambodia in January - August 2013

	Inbound tourism		share (%)		change (%)
	2012	2013	2012	2013	2013*/12
Air	1,113,244	1,307,769	47.7	47.2	17.5
Phnom Penh Int'l Airport	460,359	541,613	19.7	19.5	17.7
Siem Reap Int'l Airport	652,885	766,156	28.0	27.6	17.3
Land and Water ways	1,221,549	1,465,655	52.3	52.8	20.0
Land	1,168,006	1,419,430	50.0	51.2	21.5
Waterway	53,543	46,225	2.3	1.7	-13.7
Total	2,334,793	2,773,424	100.0	100.0	18.8

V. Remark: Percentage share of international tourist arrivals at destinations in January - August 2013

	Arrivals		share (%)		change (%)
	2012	2013	2012	2013	2013*/12
Phnom Penh & Other Destinations	969,170	1,340,486	41.5	48.3	38.3
Siem Reap Province	1,365,623	1,432,938	58.5	51.7	4.9
Total	2,334,793	2,773,424	100.0	100.0	18.8

VI. Outbound tourism in January - August 2013

	Outbound tourism		change (%)
	2012	2013	2013*/12
Cambodian outbound tourists	519,803	578,470	11.3
International outbound tourists	2,299,685	2,782,522	21.0

International Tourist Arrivals to Cambodia by Country of Residence in January - August 2013

(by all mean of transportations)

Regions Country of Residence	2012		2013			share		change
		Purpose of Visit	Total	Female	share (%)	change (%)		
							Holiday	Business
GRAND TOTAL	2,334,793	2,628,338	123,092	21,994	2,773,424	1,297,699	100.0	18.8
Asia and the Pacific	1,764,231	2,020,299	98,868	12,354	2,131,521	1,018,379	76.9	20.8
ASEAN (South-East Asia)	980,686	1,179,496	26,065	6,145	1,211,706	596,422	43.7	23.6
Brunei Darussalam	624	404	7	40	451	184	0.0	-27.7
Indonesia	14,308	15,773	2,509	180	18,462	5,828	0.7	29.0
Lao PDR	151,771	262,906	85	255	263,246	169,260	9.5	73.4
Malaysia	72,888	75,590	5,432	158	81,180	28,486	2.9	11.4
Myanmar	3,138	2,880	391	161	3,432	1,486	0.1	9.4
Philippines	62,987	72,853	4,415	540	77,808	46,023	2.8	23.5
Singapore	31,578	32,654	1,550	110	34,314	11,756	1.2	8.7
Thailand	123,227	138,762	6,390	2,799	147,951	62,284	5.3	20.1
Vietnam	520,165	577,674	5,286	1,902	584,862	271,115	21.1	12.4
North-East Asia	676,808	733,643	65,063	4,090	802,796	374,322	28.9	18.6
China (RPC)	207,617	265,649	38,325	1,575	305,549	144,850	11.0	47.2
Hong Kong SAR	5,067	4,181	116	9	4,306	2,100	0.2	-15.0
Japan	115,440	123,298	7,556	1,271	132,125	55,141	4.8	14.5
Korea (ROK)	287,210	284,233	11,154	1,110	296,497	144,879	10.7	3.2
Mongolia	245	216	18	21	255	118	0.0	4.1
Taiwan, China	61,229	56,066	7,894	104	64,064	27,234	2.3	4.6
Southern Asia	15,540	15,443	2,688	653	18,784	4,924	0.7	20.9
Afghanistan	96	209	1	18	228	22	0.0	137.5
Bangladesh	798	931	149	95	1,175	148	0.0	47.2
Bhutan	111	39	8	18	65	19	0.0	-41.4
India	11,813	12,454	1,839	321	14,614	4,113	0.5	23.7
Nepal	968	664	170	104	938	229	0.0	-3.1
Pakistan	805	392	262	55	709	124	0.0	-11.9
Srilanka	949	754	259	42	1,055	269	0.0	11.2
Western Asia	1,590	1,965	178	13	2,156	1,188	0.1	35.6
Kazakhstan	1,203	1,585	154	10	1,749	928	0.1	45.4
Uzbekistan	387	380	24	3	407	260	0.0	5.2
Oceania	85,588	87,624	4,604	1,252	93,480	40,430	3.4	9.2
Australia	74,195	76,152	3,902	1,099	81,153	35,269	2.9	9.4
Fiji	67	55	7	7	69	22	0.0	3.0
New Zealand	11,326	11,417	695	146	12,258	5,139	0.4	8.2
Other Asia & the Pacific	4,019	2,128	270	201	2,599	1,093	0.1	-35.3
Europe	397,846	433,924	15,277	5,359	454,560	197,895	16.4	14.3
Northern Europe	107,209	113,614	4,715	1,226	119,555	47,642	4.3	11.5
Denmark	6,697	7,152	199	83	7,434	3,091	0.3	11.0
Finland	4,111	4,118	166	74	4,358	1,520	0.2	6.0
Iceland	398	585	35	10	630	267	0.0	58.3
Ireland	5,996	6,442	256	68	6,766	2,897	0.2	12.8
Norway	5,716	6,205	176	80	6,461	2,659	0.2	13.0
Sweden	10,339	10,619	337	171	11,127	4,201	0.4	7.6
United Kingdom	73,952	78,493	3,546	740	82,779	33,007	3.0	11.9
Western Europe	172,133	178,445	7,774	3,278	189,497	79,179	6.8	10.1
Austria	5,459	5,821	152	73	6,046	2,409	0.2	10.8
Belgium	9,881	9,850	475	170	10,495	4,214	0.4	6.2
France	82,795	82,089	4,745	2,005	88,839	38,014	3.2	7.3
Germany	45,723	49,507	1,328	612	51,447	20,951	1.9	12.5
Luxembourg	299	353	11	4	368	156	0.0	23.1
Monaco	35	68	6	1	75	36	0.0	114.3
Netherlands	16,143	18,467	632	223	19,322	8,125	0.7	19.7
Switzerland	11,798	12,290	425	190	12,905	5,274	0.5	9.4
Central / Eastern Europe	76,418	99,767	1,394	318	101,479	52,734	3.7	32.8
Bulgaria	388	527	9	12	548	256	0.0	41.2
Czech Republic	2,652	3,020	30	29	3,079	1,272	0.1	16.1
Estonia	550	768	30	26	824	332	0.0	49.8
Hungary	1,619	1,978	26	14	2,018	879	0.1	24.6
Lithuania	686	1,024	11	2	1,037	506	0.0	51.2
Poland	5,660	7,461	57	43	7,561	3,718	0.3	33.6
Romania	763	795	51	4	850	436	0.0	11.4
Russian Federation	60,037	79,221	1,051	146	80,418	42,801	2.9	33.9
Slovakia	1,050	1,421	67	27	1,515	642	0.1	44.3
Ukraine	3,013	3,552	62	15	3,629	1,892	0.1	20.4

International Tourist Arrivals to Cambodia by Country of Residence in January - August 2013

(by all mean of transportations)

Regions Country of Residence	2012		2013			share		change
		Purpose of Visit			Total	Female	2013*	2013*/12
		Holiday	Business	Other				
GRAND TOTAL	2,334,793	2,628,338	123,092	21,994	2,773,424	1,297,699	100.0	18.8
Southern Europe	38,256	40,214	1,218	398	41,830	17,423	1.5	9.3
Croatia	469	462	16	7	485	224	0.0	3.4
Greece	725	789	22	5	816	291	0.0	12.6
Italy	15,252	16,464	488	170	17,122	6,559	0.6	12.3
Portugal	1,857	2,495	85	16	2,596	1,229	0.1	39.8
Serbia	234	374	26	13	413	213	0.0	76.5
Slovenia	630	727	40	7	774	329	0.0	22.9
Spain	17,181	16,445	277	134	16,856	7,745	0.6	-1.9
Turkey	1,908	2,458	264	46	2,768	833	0.1	45.1
Other Europe	3,830	1,884	176	139	2,199	917	0.1	-42.6
Americas	162,244	163,973	8,282	3,925	176,180	77,460	6.4	8.6
Argentina	3,356	4,275	27	39	4,341	2,173	0.2	29.4
Brazil	3,242	4,340	43	32	4,415	2,101	0.2	36.2
Canada	32,347	32,345	1,537	377	34,259	15,130	1.2	5.9
Chile	2,121	2,836	64	16	2,916	1,482	0.1	37.5
Colombia	977	1,064	34	20	1,118	529	0.0	14.4
Costa Rica	181	197	7	4	208	110	0.0	14.9
Ecuador	109	148	9	7	164	78	0.0	50.5
Mexico	2,603	2,899	33	26	2,958	1,438	0.1	13.6
Peru	362	387	23	10	420	200	0.0	16.0
United States	114,347	113,848	6,368	3,278	123,494	53,309	4.5	8.0
Uruguay	405	513	5	8	526	251	0.0	29.9
Other Americas	2,194	1,121	132	108	1,361	659	0.0	-38.0
Africa	3,387	3,136	384	225	3,745	1,476	0.1	10.6
Cameroon	143	72	3	19	94	11	0.0	-34.3
Congo	41	27	3	7	37	10	0.0	-9.8
Ghana	111	100	7	11	118	38	0.0	6.3
Kenya	163	141	14	38	193	96	0.0	18.4
Liberia	72	38	0	1	39	7	0.0	-45.8
Nigeria	392	206	178	33	417	44	0.0	6.4
Sudan	32	28	2	4	34	3	0.0	6.3
South Africa	2,045	2,242	140	58	2,440	1,102	0.1	19.3
Uganda	53	30	2	11	43	17	0.0	-18.9
Other Africa	335	252	35	43	330	148	0.0	-1.5
Middle East	7,085	7,006	281	131	7,418	2,489	0.3	4.7
Egypt	114	153	36	12	201	39	0.0	76.3
Iran	440	437	20	3	460	125	0.0	4.5
Iraq	61	98	2	6	106	31	0.0	73.8
Israel	5,281	4,825	197	31	5,053	2,053	0.2	-4.3
Kuwait	448	748	1	14	763	29	0.0	70.3
Oman	95	154	0	2	156	15	0.0	64.2
Palestine	25	72	2	6	80	13	0.0	220.0
Qatar	54	73	0	9	82	37	0.0	51.9
Saudi Arabia	56	97	2	6	105	18	0.0	87.5
United Arab Emirates	153	115	0	1	116	15	0.0	-24.2
Yemen	117	72	5	13	90	12	0.0	-23.1
Other Middle East	241	162	16	28	206	102	0.0	-14.5

Remark:

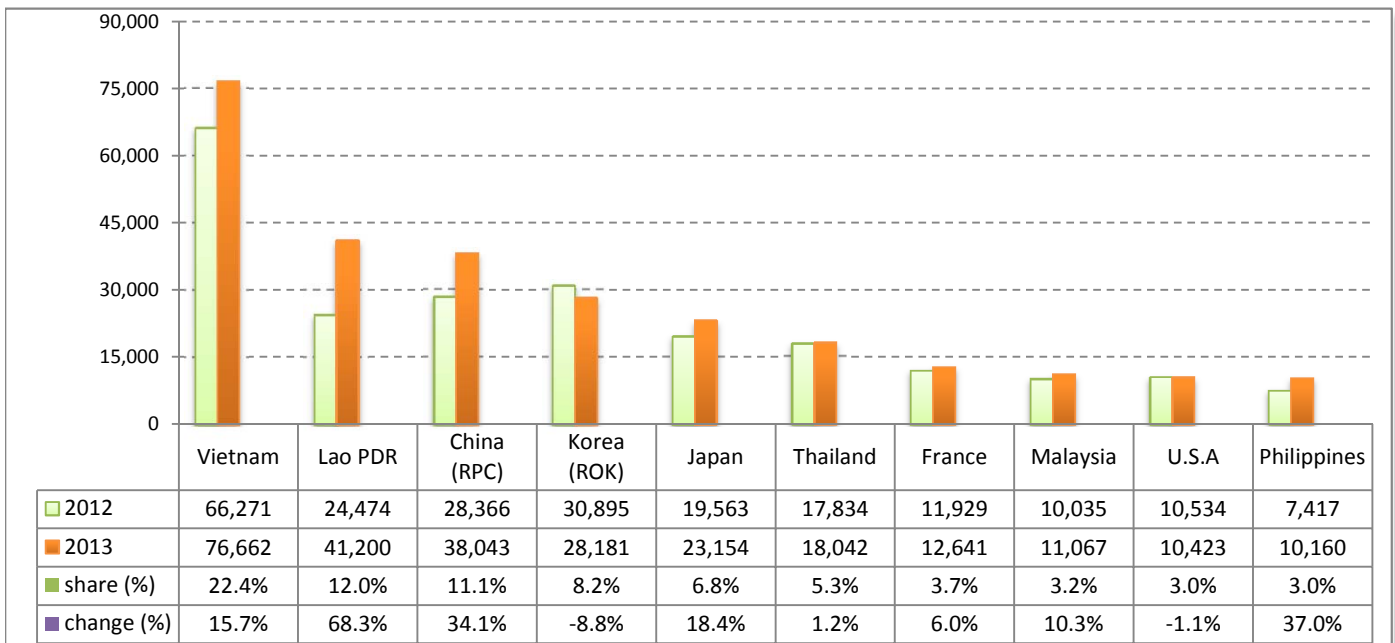
- Cambodian outbound tourist departures: 578,470
 - International outbound tourist departures: 2,782,522

I. International tourist arrivals to Cambodia in August 2013 was: **342,064**

II. Mode of arrivals

	arrivals	share (%)
Air	153,905	45.0
Phnom Penh Int'l Airport	66,865	19.5
Siem Reap Int'l Airport	87,040	25.4
Land and Water ways	188,159	55.0
Land	183,315	53.6
Waterway	4,844	1.4
Total	342,064	100.0

III. Top ten markets arrivals in August 2013



IV. International tourist arrivals to Cambodia in August 2013

	Inbound tourism		share (%)		change (%)
	2012	2013	2012	2013	2013*/12
Air	135,960	153,905	46.3	45.0	13.2
Phnom Penh Int'l Airport	57,016	66,865	19.4	19.5	17.3
Siem Reap Int'l Airport	78,944	87,040	26.9	25.4	10.3
Land and Water ways	157,899	188,159	53.7	55.0	19.2
Land	153,587	183,315	52.3	53.6	19.4
Waterway	4,312	4,844	1.5	1.4	12.3
Total	293,859	342,064	100.0	100.0	16.4

V. Remark: Percentage share of international tourist arrivals at destinations in August 2013

	Arrivals		share (%)		change (%)
	2012	2013	2012	2013	2013*/12
Phnom Penh & Other Destinations	130,357	190,615	44.4	55.7	46.2
Siem Reap Province	163,502	151,449	55.6	44.3	-7.4
Total	293,859	342,064	100.0	100.0	16.4

VI. Outbound tourism in August 2013

	Outbound tourism		change (%)
	2012	2013	2013*/12
Cambodian outbound tourists	64,786	69,420	7.2
International outbound tourists	297,916	346,436	16.3

International Tourist Arrivals to Cambodia by Country of Residence in August 2013

(by all mean of transportations)

Regions Country of Residence	2012	2013			Total	Female	share	change
		Purpose of Visit					(%)	(%)
		Holiday	Business	Other			2013*	2013*/12
GRAND TOTAL	293,859	324,092	15,073	2,899	342,064	161,667	100.0	16.4
Asia and the Pacific	230,850	259,719	12,041	1,780	273,540	131,597	80.0	18.5
ASEAN (South-East Asia)	132,977	160,408	3,162	900	164,470	82,504	48.1	23.7
Brunei Darussalam	64	45	0	13	58	13	0.0	-9.4
Indonesia	2,970	2,526	311	30	2,867	1,000	0.8	-3.5
Lao PDR	24,474	41,145	6	49	41,200	26,094	12.0	68.3
Malaysia	10,035	10,421	613	33	11,067	3,921	3.2	10.3
Myanmar	231	299	27	21	347	170	0.1	50.2
Philippines	7,417	9,585	507	68	10,160	6,126	3.0	37.0
Singapore	3,681	3,861	192	14	4,067	1,375	1.2	10.5
Thailand	17,834	16,588	914	540	18,042	7,585	5.3	1.2
Vietnam	66,271	75,938	592	132	76,662	36,220	22.4	15.7
North-East Asia	86,646	88,620	7,880	613	97,113	44,471	28.4	12.1
China (RPC)	28,366	33,460	4,337	246	38,043	17,915	11.1	34.1
Hong Kong SAR	365	386	14	0	400	178	0.1	9.6
Japan	19,563	21,923	1,047	184	23,154	10,162	6.8	18.4
Korea (ROK)	30,895	26,527	1,506	148	28,181	13,203	8.2	-8.8
Mongolia	19	13	0	0	13	6	0.0	-31.6
Taiwan, China	7,438	6,311	976	35	7,322	3,007	2.1	-1.6
Southern Asia	2,103	2,140	391	121	2,652	751	0.8	26.1
Afghanistan	8	6	0	8	14	1	0.0	75.0
Bangladesh	108	123	7	19	149	31	0.0	38.0
Bhutan	18	3	1	8	12	6	0.0	-33.3
India	1,613	1,737	277	53	2,067	594	0.6	28.1
Nepal	166	71	28	14	113	26	0.0	-31.9
Pakistan	88	50	42	13	105	25	0.0	19.3
Srilanka	102	150	36	6	192	68	0.1	88.2
Western Asia	125	139	34	3	176	106	0.1	40.8
Kazakhstan	82	100	30	1	131	73	0.0	59.8
Uzbekistan	43	39	4	2	45	33	0.0	4.7
Oceania	8,229	8,260	555	127	8,942	3,667	2.6	8.7
Australia	6,993	7,057	465	113	7,635	3,151	2.2	9.2
Fiji	9	4	1	0	5	2	0.0	-44.4
New Zealand	1,227	1,199	89	14	1,302	514	0.4	6.1
Other Asia & the Pacific	770	152	19	16	187	98	0.1	-75.7
Europe	47,594	50,432	2,028	686	53,146	23,757	15.5	11.7
Northern Europe	10,321	11,482	560	155	12,197	5,039	3.6	18.2
Denmark	508	446	21	4	471	175	0.1	-7.3
Finland	174	143	17	16	176	51	0.1	1.1
Iceland	26	132	8	3	143	60	0.0	450.0
Ireland	796	747	25	14	786	380	0.2	-1.3
Norway	269	340	25	2	367	119	0.1	36.4
Sweden	469	381	27	17	425	124	0.1	-9.4
United Kingdom	8,079	9,293	437	99	9,829	4,130	2.9	21.7
Western Europe	21,204	21,137	1,101	435	22,673	9,878	6.6	6.9
Austria	503	597	9	3	609	264	0.2	21.1
Belgium	1,232	1,038	67	18	1,123	473	0.3	-8.8
France	11,929	11,631	705	305	12,641	5,581	3.7	6.0
Germany	4,507	4,501	167	66	4,734	2,017	1.4	5.0
Luxembourg	56	57	4	1	62	26	0.0	10.7
Monaco	5	12	0	0	12	7	0.0	140.0
Netherlands	2,079	2,339	92	19	2,450	1,070	0.7	17.8
Switzerland	893	962	57	23	1,042	440	0.3	16.7
Central / Eastern Europe	5,403	6,677	163	40	6,880	3,640	2.0	27.3
Bulgaria	34	43	1	5	49	28	0.0	44.1
Czech Republic	158	180	5	1	186	73	0.1	17.7
Estonia	24	43	2	4	49	25	0.0	104.2
Hungary	95	101	2	1	104	50	0.0	9.5
Lithuania	27	34	0	0	34	18	0.0	25.9
Poland	404	444	1	6	451	231	0.1	11.6
Romania	71	71	1	0	72	39	0.0	1.4
Russian Federation	4,274	5,502	142	20	5,664	3,050	1.7	32.5
Slovakia	81	81	5	3	89	46	0.0	9.9
Ukraine	235	178	4	0	182	80	0.1	-22.6

International Tourist Arrivals to Cambodia by Country of Residence in August 2013

(by all mean of transportations)

Regions Country of Residence	2012		2013			share		change
	Purpose of Visit			Total	Female	(%) 2013*	(%) 2013*/12	
	Holiday	Business	Other					
GRAND TOTAL	293,859	324,092	15,073	2,899	342,064	161,667	100.0	16.4
Southern Europe	10,010	11,017	189	44	11,250	5,115	3.3	12.4
Croatia	86	39	3	0	42	16	0.0	-51.2
Greece	171	176	3	2	181	77	0.1	5.8
Italy	3,817	4,181	59	14	4,254	1,852	1.2	11.4
Portugal	442	527	10	0	537	258	0.2	21.5
Serbia	24	58	4	0	62	31	0.0	158.3
Slovenia	49	37	4	0	41	16	0.0	-16.3
Spain	5,195	5,770	35	21	5,826	2,778	1.7	12.1
Turkey	226	229	71	7	307	87	0.1	35.8
Other Europe	656	119	15	12	146	85	0.0	-77.7
Americas	14,278	12,879	932	411	14,222	5,949	4.2	-0.4
Argentina	172	220	5	4	229	99	0.1	33.1
Brazil	235	313	9	3	325	142	0.1	38.3
Canada	2,379	2,237	142	41	2,420	1,056	0.7	1.7
Chile	209	243	4	0	247	110	0.1	18.2
Colombia	149	113	2	1	116	54	0.0	-22.1
Costa Rica	14	12	1	0	13	6	0.0	-7.1
Ecuador	20	18	1	1	20	10	0.0	0.0
Mexico	205	254	0	7	261	122	0.1	27.3
Peru	37	44	0	1	45	22	0.0	21.6
United States	10,534	9,323	755	345	10,423	4,275	3.0	-1.1
Uruguay	19	4	0	1	5	3	0.0	-73.7
Other Americas	305	98	13	7	118	50	0.0	-61.3
Africa	443	315	38	15	368	140	0.1	-16.9
Cameroon	16	8	0	0	8	0	0.0	-50.0
Congo	3	1	0	1	2	1	0.0	-33.3
Ghana	11	9	0	3	12	4	0.0	9.1
Kenya	29	11	1	2	14	6	0.0	-51.7
Liberia	6	13	0	0	13	1	0.0	116.7
Nigeria	54	31	19	1	51	6	0.0	-5.6
Sudan	3	1	0	1	2	0	0.0	-33.3
South Africa	254	222	15	3	240	109	0.1	-5.5
Uganda	10	0	0	1	1	0	0.0	-90.0
Other Africa	57	19	3	3	25	13	0.0	-56.1
Middle East	694	747	34	7	788	224	0.2	13.5
Egypt	8	14	2	1	17	0	0.0	112.5
Iran	55	54	4	0	58	14	0.0	5.5
Iraq	6	11	2	0	13	6	0.0	116.7
Israel	482	448	22	3	473	165	0.1	-1.9
Kuwait	38	106	0	0	106	9	0.0	178.9
Oman	16	19	0	0	19	4	0.0	18.8
Palestine	7	17	0	0	17	3	0.0	142.9
Qatar	3	3	0	0	3	0	0.0	0.0
Saudi Arabia	7	8	0	0	8	1	0.0	14.3
United Arab Emirates	18	44	0	1	45	9	0.0	150.0
Yemen	11	8	0	0	8	2	0.0	-27.3
Other Middle East	43	15	4	2	21	11	0.0	-51.2

Remark:

- Cambodian outbound tourist departures: 69,420
- International outbound tourist departures: 346,436

COMPILED BY:

1. Mr. Kong Sopheareak

Director
Statistics & Tourism Information Department
Fax: +855 23 885003
E-mail: kong@mot.gov.kh

2. Mr. Horth Vanny

Chief of Tourism Statistics Office
Compile and data analysis
Tel.: +855 12 827664