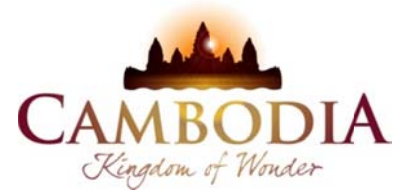




KINGDOM OF CAMBODIA
NATION RELIGION KING



TOURISM STATISTICS REPORT

July 2012

MINISTRY OF TOURISM

Statistics and Tourism Information Department

No. A3, Street 169, Sangkat Veal Vong, Khan 7 Makara, Phnom Penh, Cambodia.

Fax: +855 23 885003

E-mail: kong@mot.gov.kh

Web site: www.mot.gov.kh

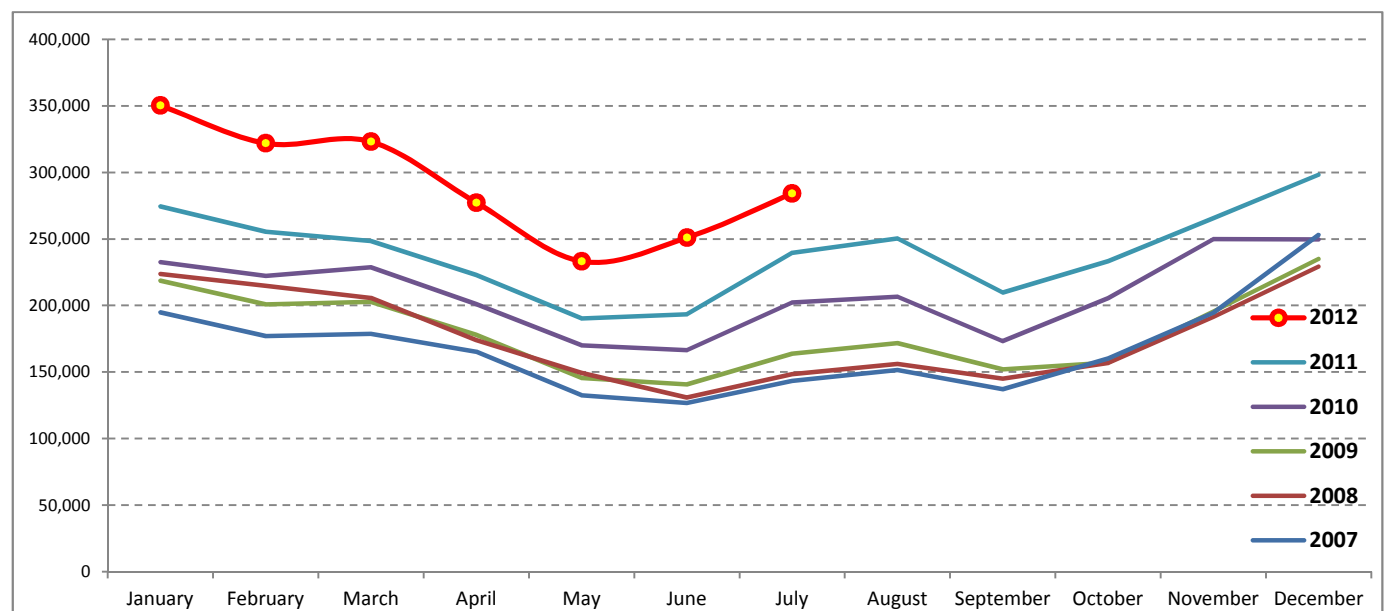
Tourism Highlights

International Tourist Arrivals, Average Length of Stay, Hotels Occupancy & Tourism Receipts 1993 - 2011

Years	Tourist Arrivals		Average Length	Hotels Occupancy	Tourism Receipts
	number	change (%)	of Stay (days)	(%)	(Million US\$)
1993	118,183	-	N/A	N/A	N/A
1994	176,617	49.4	N/A	N/A	N/A
1995	219,680	24.4	8.00	37.00	100
1996	260,489	18.6	7.50	40.00	118
1997	218,843	-16.0	6.40	30.00	103
1998	286,524	30.9	5.20	40.00	166
1999	367,743	28.3	5.50	44.00	190
2000	466,365	26.8	5.50	45.00	228
2001	604,919	29.7	5.50	48.00	304
2002	786,524	30.0	5.80	50.00	379
2003	701,014	-10.9	5.50	50.00	347
2004	1,055,202	50.5	6.30	52.00	578
2005	1,421,615	34.7	6.30	52.00	832
2006	1,700,041	19.6	6.50	54.79	1,049
2007	2,015,128	18.5	6.50	54.79	1,400
2008	2,125,465	5.5	6.65	62.68	1,595
2009	2,161,577	1.7	6.45	63.57	1,561
2010	2,508,289	16.0	6.45	65.74	1,786
2011	2,881,862	14.9	6.50	66.15	1,912

International tourist arrivals to Cambodia

Destination	Months	2007	2008	2009	2010	2011	2012	change (%) 2012*/11
Cambodia	Q1	550,813	644,205	622,288	683,692	778,467	995,210	27.8
<i>International tourist arrivals</i>	January	194,932	223,581	218,691	232,590	274,471	350,257	27.6
<i>by all means of</i>	February	177,130	214,902	200,789	222,354	255,499	321,870	26.0
<i>transportations</i>	March	178,751	205,722	202,808	228,748	248,497	323,083	30.0
	Q2	424,536	454,031	464,230	537,464	606,562	761,442	25.5
	April	165,347	173,903	177,955	200,965	223,032	277,304	24.3
	May	132,512	149,275	145,564	170,164	190,258	233,220	22.6
	June	126,677	130,853	140,711	166,335	193,272	250,918	29.8
	Q3	431,815	449,693	487,422	582,024	699,760	284,282	
	July	143,310	148,449	163,817	202,349	239,527	284,282	18.7
	August	151,478	156,098	171,668	206,563	250,429		
	September	137,027	145,146	151,937	173,112	209,804		
	Q4	607,964	577,536	587,637	705,109	797,073	0	
	October	160,235	156,718	157,105	205,515	233,190		
	November	194,646	191,549	195,570	249,892	265,539		
	December	253,083	229,269	234,962	249,702	298,344		
	Total	2,015,128	2,125,465	2,161,577	2,508,289	2,881,862	2,040,934	25.6



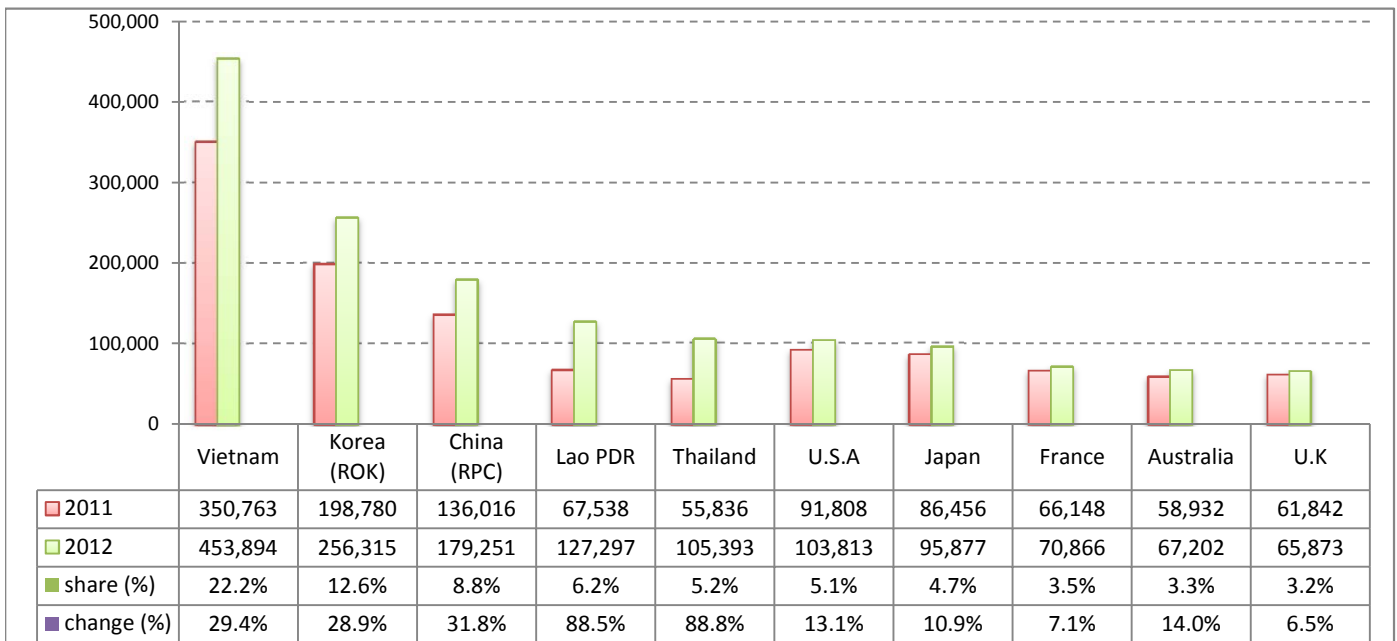
Executive Summary Report in the First Seven Months of 2012

I. International tourist arrivals to Cambodia in January - July 2012 was: **2,040,934**

II. Mode of arrivals

	visitors	share (%)
Air	977,284	47.9
Phnom Penh Int'l Airport	403,343	19.8
Siem Reap Int'l Airport	573,941	28.1
Land and Water ways	1,063,650	52.1
Land	1,014,419	49.7
Waterway	49,231	2.4
Total	2,040,934	100.0

III. Top ten markets arrivals in January - July 2012



IV. International tourist arrivals to Cambodia in January - July 2012

	Inbound tourism		share (%)		change (%)
	2011	2012	2011	2012	2012*/11
Air	830,715	977,284	51.1	47.9	17.6
Phnom Penh Int'l Airport	367,339	403,343	22.6	19.8	9.8
Siem Reap Int'l Airport	463,376	573,941	28.5	28.1	23.9
Land and Water ways	793,841	1,063,650	48.9	52.1	34.0
Land	745,913	1,014,419	45.9	49.7	36.0
Waterway	47,928	49,231	3.0	2.4	2.7
Total	1,624,556	2,040,934	100.0	100.0	25.6

V. Remark: Percentage share of international tourist arrivals at destinations in January - July 2012

	Arrivals		share (%)		change (%)
	2011	2012	2011	2012	2012*/11
Phnom Penh & Other Destinations	717,093	838,813	44.1	41.1	17.0
Siem Reap Province	907,463	1,202,121	55.9	58.9	32.5
Total	1,624,556	2,040,934	100.0	100.0	25.6

VI. Outbound tourists departures in January - July 2012

	Outbound tourism		change (%)
	2011	2012	2012*/11
Cambodian outbound tourists	357,048	455,017	27.4
International outbound tourists	1,609,601	2,001,769	24.4

International Tourist Arrivals to Cambodia by Country of Residence in January - July 2012

(by all mean of transportations)

Regions Country of Residence	2011		2012			share		change	
			Purpose of Visit			Total	Female	2012*	2012*/11
			Holiday	Business	Other				
GRAND TOTAL	1,624,556	1,873,447	92,819	74,668	2,040,934	922,385	100.0	25.6	
Asia and the Pacific	1,174,547	1,422,566	73,328	37,487	1,533,381	706,071	75.1	30.6	
ASEAN	605,628	805,728	19,217	22,764	847,709	391,772	41.5	40.0	
Brunei Darussalam	282	464	8	88	560	217	0.0	98.6	
Indonesia	8,405	9,704	1,380	254	11,338	3,693	0.6	34.9	
Lao PDR	67,538	126,879	58	360	127,297	86,912	6.2	88.5	
Malaysia	57,239	58,710	3,691	452	62,853	21,994	3.1	9.8	
Myanmar	2,488	2,378	374	155	2,907	1,186	0.1	16.8	
Philippines	37,022	51,261	3,680	629	55,570	33,194	2.7	50.1	
Singapore	26,055	26,571	1,138	188	27,897	9,823	1.4	7.1	
Thailand	55,836	95,017	4,941	5,435	105,393	48,140	5.2	88.8	
Vietnam	350,763	434,744	3,947	15,203	453,894	186,613	22.2	29.4	
Eastern Asia	484,023	536,308	47,875	5,979	590,162	275,297	28.9	21.9	
China (RPC)	136,016	149,655	27,914	1,682	179,251	81,643	8.8	31.8	
Hong Kong SAR	3,180	4,504	154	44	4,702	2,280	0.2	47.9	
Japan	86,456	89,630	4,721	1,526	95,877	41,506	4.7	10.9	
Korea (ROK)	198,780	245,725	8,786	1,804	256,315	127,049	12.6	28.9	
Mongolia	157	185	14	27	226	112	0.0	43.9	
Taiwan, China	59,434	46,609	6,286	896	53,791	22,707	2.6	-9.5	
Southern Asia	10,811	10,987	1,840	610	13,437	3,633	0.7	24.3	
Afghanistan	81	59	8	21	88	12	0.0	8.6	
Bangladesh	712	492	113	85	690	87	0.0	-3.1	
Bhutan	52	78	1	14	93	17	0.0	78.8	
India	8,137	8,636	1,237	327	10,200	3,012	0.5	25.4	
Nepal	618	663	85	54	802	216	0.0	29.8	
Pakistan	620	463	209	45	717	119	0.0	15.6	
Srilanka	591	596	187	64	847	170	0.0	43.3	
Western Asia	1,283	1,342	114	9	1,465	805	0.1	14.2	
Kazakhstan	816	1,025	88	8	1,121	579	0.1	37.4	
Uzbekistan	467	317	26	1	344	226	0.0	-26.3	
Oceania	68,154	65,869	3,762	7,728	77,359	33,357	3.8	13.5	
Australia	58,932	57,328	3,152	6,722	67,202	29,308	3.3	14.0	
Fiji	74	46	9	3	58	15	0.0	-21.6	
New Zealand	9,148	8,495	601	1,003	10,099	4,034	0.5	10.4	
Other Asia & the Pacific	4,648	2,332	520	397	3,249	1,207	0.2	-30.1	
Europe	311,050	322,859	12,250	15,143	350,252	149,415	17.2	12.6	
Northern Europe	92,189	91,405	3,893	1,590	96,888	37,164	4.7	5.1	
Denmark	6,306	5,935	163	91	6,189	2,499	0.3	-1.9	
Finland	4,173	3,662	167	108	3,937	1,451	0.2	-5.7	
Iceland	230	355	14	3	372	136	0.0	61.7	
Ireland	4,871	4,900	220	80	5,200	2,049	0.3	6.8	
Norway	5,458	5,209	128	110	5,447	2,209	0.3	-0.2	
Sweden	9,309	9,428	274	168	9,870	3,759	0.5	6.0	
United Kingdom	61,842	61,916	2,927	1,030	65,873	25,061	3.2	6.5	
Western Europe	138,992	132,503	5,996	12,430	150,929	62,831	7.4	8.6	
Austria	4,506	4,638	114	204	4,956	1,968	0.2	10.0	
Belgium	8,052	7,850	355	444	8,649	3,425	0.4	7.4	
France	66,148	57,190	3,669	10,007	70,866	30,049	3.5	7.1	
Germany	37,240	39,297	990	929	41,216	16,551	2.0	10.7	
Luxembourg	288	228	5	10	243	92	0.0	-15.6	
Monaco	56	30	0	0	30	16	0.0	-46.4	
Netherlands	12,837	13,363	434	267	14,064	5,637	0.7	9.6	
Switzerland	9,865	9,907	429	569	10,905	5,093	0.5	10.5	
Eastern Europe	51,606	69,834	935	246	71,015	36,546	3.5	37.6	
Bulgaria	237	345	6	3	354	191	0.0	49.4	
Czech Republic	1,954	2,435	44	15	2,494	1,061	0.1	27.6	
Estonia	586	505	13	8	526	228	0.0	-10.2	
Hungary	1,741	1,464	29	31	1,524	654	0.1	-12.5	
Lithuania	924	635	18	6	659	337	0.0	-28.7	
Poland	4,756	5,185	38	33	5,256	2,557	0.3	10.5	
Romania	606	651	33	8	692	375	0.0	14.2	
Russian Federation	37,799	55,029	630	104	55,763	29,353	2.7	47.5	
Slovakia	748	885	55	29	969	385	0.0	29.5	
Ukraine	2,255	2,700	69	9	2,778	1,405	0.1	23.2	

International Tourist Arrivals to Cambodia by Country of Residence in January - July 2012

(by all mean of transportations)

Regions Country of Residence	2011		2012			share		change	
			Purpose of Visit			Total	Female	(%)	(%)
			Holiday	Business	Other			2012*	2012*/11
GRAND TOTAL	1,624,556	1,873,447	92,819	74,668	2,040,934	922,385	100.0	25.6	
Southern Europe	24,109	27,035	763	448	28,246	11,553	1.4	17.2	
Croatia	276	369	11	3	383	187	0.0	38.8	
Greece	699	533	11	10	554	188	0.0	-20.7	
Italy	10,834	10,899	369	167	11,435	4,161	0.6	5.5	
Portugal	1,466	1,358	39	18	1,415	622	0.1	-3.5	
Serbia	245	192	16	2	210	93	0.0	-14.3	
Slovenia	449	563	16	2	581	241	0.0	29.4	
Spain	8,487	11,597	204	185	11,986	5,632	0.6	41.2	
Turkey	1,653	1,524	97	61	1,682	429	0.1	1.8	
Other Europe	4,154	2,082	663	429	3,174	1,321	0.2	-23.6	
Americas	130,266	119,480	6,682	21,804	147,966	63,583	7.2	13.6	
Argentina	2,120	3,092	19	73	3,184	1,532	0.2	50.2	
Brazil	2,096	2,945	29	33	3,007	1,447	0.1	43.5	
Canada	26,327	25,993	1,168	2,807	29,968	13,076	1.5	13.8	
Chile	1,569	1,850	51	11	1,912	942	0.1	21.9	
Colombia	1,547	790	14	24	828	393	0.0	-46.5	
Costa Rica	142	158	4	5	167	89	0.0	17.6	
Ecuador	99	74	4	11	89	41	0.0	-10.1	
Mexico	1,959	2,332	40	26	2,398	1,169	0.1	22.4	
Peru	278	311	11	3	325	127	0.0	16.9	
United States	91,808	80,191	5,086	18,536	103,813	43,774	5.1	13.1	
Uruguay	413	370	0	16	386	203	0.0	-6.5	
Other Americas	1,908	1,374	256	259	1,889	790	0.1	-1.0	
Africa	3,530	2,463	344	137	2,944	1,141	0.1	-16.6	
Cameroon	281	112	3	12	127	28	0.0	-54.8	
Congo	109	33	0	5	38	9	0.0	-65.1	
Ghana	304	88	7	5	100	10	0.0	-67.1	
Kenya	163	98	15	21	134	55	0.0	-17.8	
Liberia	292	65	1	0	66	17	0.0	-77.4	
Nigeria	312	178	141	19	338	51	0.0	8.3	
Sudan	23	24	3	2	29	7	0.0	26.1	
South Africa	1,621	1,641	124	26	1,791	846	0.1	10.5	
Uganda	206	30	5	8	43	16	0.0	-79.1	
Other Africa	219	194	45	39	278	102	0.0	26.9	
Middle East	5,163	6,079	215	97	6,391	2,175	0.3	23.8	
Egypt	88	87	7	12	106	22	0.0	20.5	
Iran	416	368	4	13	385	100	0.0	-7.5	
Iraq	53	50	2	3	55	10	0.0	3.8	
Israel	3,748	4,614	155	30	4,799	1,901	0.2	28.0	
Kuwait	360	408	0	2	410	13	0.0	13.9	
Oman	71	75	0	4	79	6	0.0	11.3	
Palestine	20	18	0	0	18	3	0.0	-10.0	
Qatar	50	51	0	0	51	24	0.0	2.0	
Saudi Arabia	45	43	3	3	49	6	0.0	8.9	
United Arab Emirates	92	135	0	0	135	9	0.0	46.7	
Yemen	70	98	3	5	106	19	0.0	51.4	
Other Middle East	150	132	41	25	198	62	0.0	32.0	

Remark:

- Cambodian outbound tourist departures: 455,017
 - International outbound tourist departures: 2,001,769

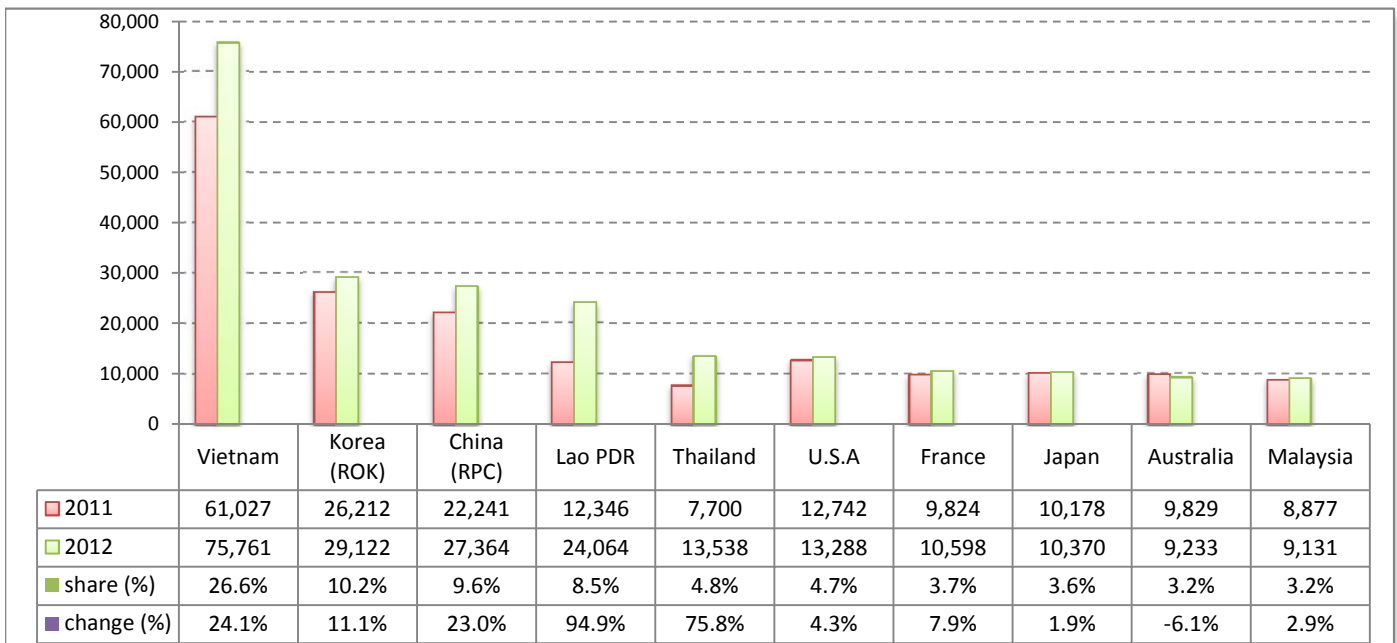
I. International tourist arrivals to Cambodia in July 2012 was:

284,282

II. Mode of arrivals

	visitors	share (%)
Air	126,405	44.5
Phnom Penh Int'l Airport	60,057	21.1
Siem Reap Int'l Airport	66,348	23.3
Land and Water ways	157,877	55.5
Land	154,519	54.4
Waterway	3,358	1.2
Total	284,282	100.0

III. Top ten markets arrivals in July 2012



IV. International tourist arrivals to Cambodia in July 2012

	Inbound tourism		share (%)		change (%)
	2011	2012	2011	2012	2012*/11
Air	116,342	126,405	48.6	44.5	8.6
Phnom Penh Int'l Airport	56,875	60,057	23.7	21.1	5.6
Siem Reap Int'l Airport	59,467	66,348	24.8	23.3	11.6
Land and Water ways	123,185	157,877	51.4	55.5	28.2
Land	116,376	154,519	48.6	54.4	32.8
Waterway	6,809	3,358	2.8	1.2	-50.7
Total	239,527	284,282	100.0	100.0	18.7

V. Remark: Percentage share of international tourist arrivals at destinations in July 2012

	Arrivals		share (%)		change (%)
	2011	2012	2011	2012	2012*/11
Phnom Penh & Other Destinations	116,573	140,818	48.7	49.5	20.8
Siem Reap Province	122,954	143,464	51.3	50.5	16.7
Total	239,527	284,282	100.0	100.0	18.7

VI. Outbound tourists departures in July 2012

	Outbound tourism		change (%)
	2011	2012	2012*/11
Cambodian outbound tourists	64,015	66,070	3.2
International outbound tourists	230,580	246,741	7.0

International Tourist Arrivals to Cambodia by Country of Residence in July 2012

(by all mean of transportations)

Regions Country of Residence	2011	2012			Total	Female	share	change
		Purpose of Visit					(%)	(%)
		Holiday	Business	Other			2012*	2012*/11
GRAND TOTAL	239,527	257,765	14,118	12,399	284,282	128,777	100.0	18.7
Asia and the Pacific	182,593	207,115	11,254	4,820	223,189	102,505	78.5	22.2
ASEAN (South-East Asia)	101,427	130,135	2,727	2,467	135,329	62,745	47.6	33.4
Brunei Darussalam	51	71	1	5	77	33	0.0	51.0
Indonesia	1,188	1,445	242	42	1,729	530	0.6	45.5
Lao PDR	12,346	23,966	17	81	24,064	16,214	8.5	94.9
Malaysia	8,877	8,537	532	62	9,131	3,030	3.2	2.9
Myanmar	258	248	59	61	368	114	0.1	42.6
Philippines	6,090	6,481	492	75	7,048	4,240	2.5	15.7
Singapore	3,890	3,419	167	27	3,613	1,118	1.3	-7.1
Thailand	7,700	12,087	636	815	13,538	5,318	4.8	75.8
Vietnam	61,027	73,881	581	1,299	75,761	32,148	26.6	24.1
North-East Asia	67,854	66,442	7,528	921	74,891	34,495	26.3	10.4
China (RPC)	22,241	22,880	4,209	275	27,364	13,041	9.6	23.0
Hong Kong SAR	403	542	19	5	566	261	0.2	40.4
Japan	10,178	9,248	869	253	10,370	4,124	3.6	1.9
Korea (ROK)	26,212	27,284	1,532	306	29,122	14,223	10.2	11.1
Mongolia	20	17	2	2	21	14	0.0	5.0
Taiwan, China	8,800	6,471	897	80	7,448	2,832	2.6	-15.4
Southern Asia	1,507	1,318	295	109	1,722	412	0.6	14.3
Afghanistan	7	10	2	6	18	3	0.0	157.1
Bangladesh	100	75	8	15	98	12	0.0	-2.0
Bhutan	13	7	1	1	9	4	0.0	-30.8
India	1,118	1,026	219	65	1,310	340	0.5	17.2
Nepal	94	48	12	5	65	23	0.0	-30.9
Pakistan	79	52	28	6	86	14	0.0	8.9
Srilanka	96	100	25	11	136	16	0.0	41.7
Western Asia	128	126	26	0	152	90	0.1	18.8
Kazakhstan	54	86	22	0	108	62	0.0	100.0
Uzbekistan	74	40	4	0	44	28	0.0	-40.5
Oceania	11,423	8,809	614	1,284	10,707	4,596	3.8	-6.3
Australia	9,829	7,605	519	1,109	9,233	4,012	3.2	-6.1
Fiji	3	8	2	1	11	4	0.0	266.7
New Zealand	1,591	1,196	93	174	1,463	580	0.5	-8.0
Other Asia & the Pacific	254	285	64	39	388	167	0.1	52.8
Europe	38,644	36,219	1,842	3,875	41,936	18,089	14.8	8.5
Northern Europe	12,639	10,624	618	258	11,500	4,633	4.0	-9.0
Denmark	1,099	826	20	15	861	359	0.3	-21.7
Finland	362	226	14	8	248	94	0.1	-31.5
Iceland	34	76	10	1	87	25	0.0	155.9
Ireland	1,105	1,012	32	7	1,051	504	0.4	-4.9
Norway	698	592	17	31	640	234	0.2	-8.3
Sweden	679	495	35	36	566	212	0.2	-16.6
United Kingdom	8,662	7,397	490	160	8,047	3,205	2.8	-7.1
Western Europe	18,234	16,228	858	3,411	20,497	8,679	7.2	12.4
Austria	522	433	9	45	487	220	0.2	-6.7
Belgium	1,662	1,565	69	125	1,759	750	0.6	5.8
France	9,824	7,334	497	2,767	10,598	4,530	3.7	7.9
Germany	2,841	3,142	149	255	3,546	1,417	1.2	24.8
Luxembourg	30	22	0	4	26	5	0.0	-13.3
Monaco	18	6	0	0	6	3	0.0	-66.7
Netherlands	2,280	2,629	67	53	2,749	1,153	1.0	20.6
Switzerland	1,057	1,097	67	162	1,326	601	0.5	25.4
Central / Eastern Europe	3,438	4,598	135	57	4,790	2,544	1.7	39.3
Bulgaria	14	31	0	3	34	15	0.0	142.9
Czech Republic	164	167	5	1	173	92	0.1	5.5
Estonia	21	40	4	1	45	21	0.0	114.3
Hungary	121	90	3	18	111	52	0.0	-8.3
Lithuania	14	31	2	0	33	14	0.0	135.7
Poland	332	370	5	5	380	176	0.1	14.5
Romania	59	92	7	2	101	55	0.0	71.2
Russian Federation	2,502	3,501	89	14	3,604	1,977	1.3	44.0
Slovakia	57	73	8	10	91	37	0.0	59.6
Ukraine	154	203	12	3	218	105	0.1	41.6

Source: Statistics and ICT Department, MOT

International Tourist Arrivals to Cambodia by Country of Residence in July 2012

(by all mean of transportations)

Regions Country of Residence	2011	2012			Total	Female	share	change
		Purpose of Visit					(%)	(%)
		Holiday	Business	Other			2012*	2012*/11
GRAND TOTAL	239,527	257,765	14,118	12,399	284,282	128,777	100.0	18.7
Southern Europe	4,133	4,454	107	54	4,615	2,017	1.6	11.7
Croatia	35	44	1	0	45	21	0.0	28.6
Greece	84	75	2	0	77	34	0.0	-8.3
Italy	1,132	1,166	52	26	1,244	446	0.4	9.9
Portugal	195	175	5	2	182	87	0.1	-6.7
Serbia	25	22	0	0	22	9	0.0	-12.0
Slovenia	57	50	1	0	51	23	0.0	-10.5
Spain	2,485	2,775	35	24	2,834	1,360	1.0	14.0
Turkey	120	147	11	2	160	37	0.1	33.3
Other Europe	200	315	124	95	534	216	0.2	167.0
Americas	17,132	13,459	922	3,658	18,039	7,816	6.3	5.3
Argentina	183	163	1	7	171	72	0.1	-6.6
Brazil	229	221	2	4	227	105	0.1	-0.9
Canada	2,981	2,599	148	499	3,246	1,453	1.1	8.9
Chile	182	163	4	3	170	81	0.1	-6.6
Colombia	152	95	2	2	99	36	0.0	-34.9
Costa Rica	21	22	1	3	26	14	0.0	23.8
Ecuador	16	23	4	3	30	10	0.0	87.5
Mexico	452	510	10	3	523	241	0.2	15.7
Peru	36	45	1	0	46	15	0.0	27.8
United States	12,742	9,474	725	3,089	13,288	5,699	4.7	4.3
Uruguay	15	9	0	0	9	4	0.0	-40.0
Other Americas	123	135	24	45	204	86	0.1	65.9
Africa	562	348	63	28	439	169	0.2	-21.9
Cameroon	51	7	1	7	15	2	0.0	-70.6
Congo	12	3	0	0	3	2	0.0	-75.0
Ghana	54	5	0	1	6	1	0.0	-88.9
Kenya	22	8	4	3	15	7	0.0	-31.8
Liberia	37	1	0	0	1	0	0.0	-97.3
Nigeria	42	34	20	2	56	7	0.0	33.3
Sudan	11	6	0	0	6	2	0.0	-45.5
South Africa	275	225	25	6	256	119	0.1	-6.9
Uganda	34	7	2	1	10	3	0.0	-70.6
Other Africa	24	52	11	8	71	26	0.0	195.8
Middle East	596	624	37	18	679	198	0.2	13.9
Egypt	14	14	1	1	16	2	0.0	14.3
Iran	51	44	1	2	47	9	0.0	-7.8
Iraq	7	4	0	0	4	1	0.0	-42.9
Israel	347	394	26	5	425	157	0.1	22.5
Kuwait	103	60	0	1	61	0	0.0	-40.8
Oman	12	5	0	0	5	0	0.0	-58.3
Palestine	2	4	0	0	4	1	0.0	100.0
Qatar	6	4	0	0	4	1	0.0	-33.3
Saudi Arabia	15	3	0	1	4	0	0.0	-73.3
United Arab Emirates	18	19	0	0	19	4	0.0	5.6
Yemen	7	56	1	3	60	12	0.0	757.1
Other Middle East	14	17	8	5	30	11	0.0	114.3

Remark:

- Cambodian outbound tourist departures: 66,070
- International outbound tourist departures: 246,741

COMPILED BY:

1. Mr. Kong Sopheareak

Director
Statistics & Tourism Information Department
Fax: +855 23 885003
E-mail: kong@mot.gov.kh

2. Mr. Horth Vanny

Chief of Tourism Statistics Office
Compile and data analysis
Tel.: +855 12 827664