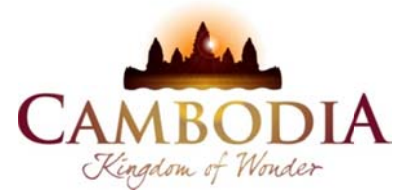




KINGDOM OF CAMBODIA  
NATION RELIGION KING



# TOURISM STATISTICS REPORT

# March 2012

**MINISTRY OF TOURISM**

Statistics and Tourism Information Department

No. A3, Street 169, Sangkat Veal Vong, Khan 7 Makara, Phnom Penh, Cambodia.

Fax: +855 23 885003

E-mail: [kong@mot.gov.kh](mailto:kong@mot.gov.kh)

Web site: [www.mot.gov.kh](http://www.mot.gov.kh)

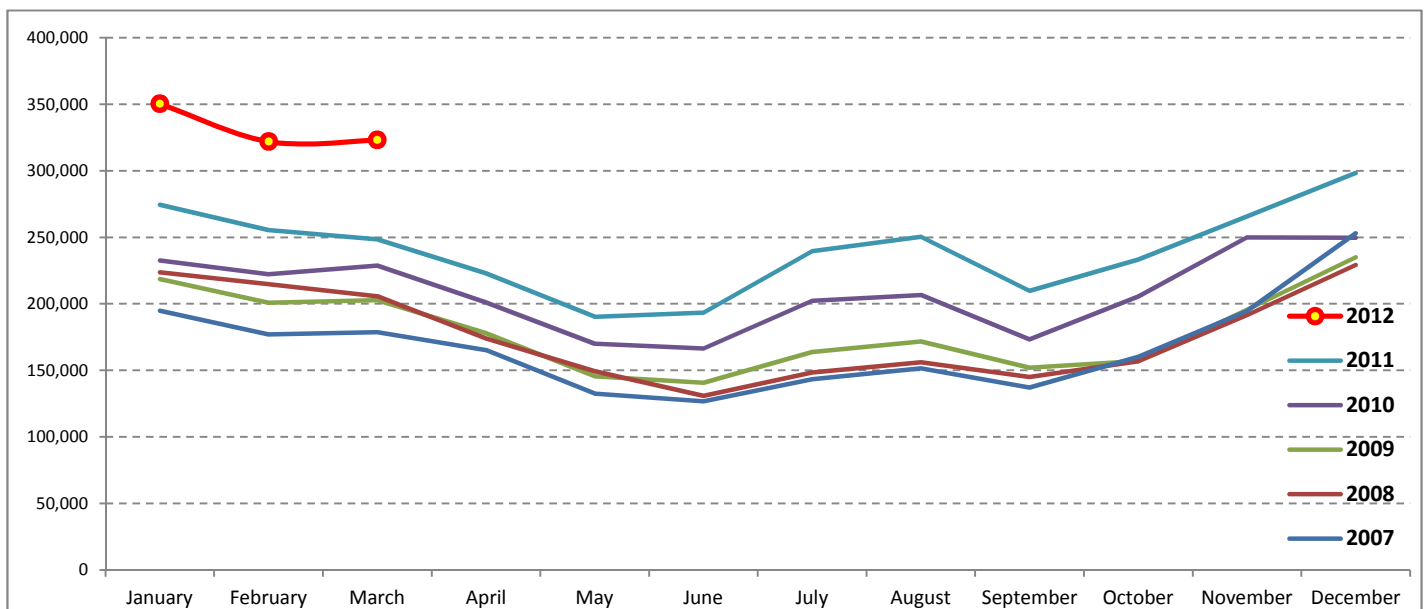
## Tourism Highlights

### International Tourist Arrivals, Average Length of Stay, Hotels Occupancy & Tourism Receipts 1993 - 2011

Years	Tourist Arrivals		Average Length	Hotels Occupancy	Tourism Receipts
	number	change (%)	of Stay (days)	(%)	(Million US\$)
1993	118,183	-	N/A	N/A	N/A
1994	176,617	49.4	N/A	N/A	N/A
1995	219,680	24.4	8.00	37.00	100
1996	260,489	18.6	7.50	40.00	118
1997	218,843	-16.0	6.40	30.00	103
1998	286,524	30.9	5.20	40.00	166
1999	367,743	28.3	5.50	44.00	190
2000	466,365	26.8	5.50	45.00	228
2001	604,919	29.7	5.50	48.00	304
2002	786,524	30.0	5.80	50.00	379
2003	701,014	-10.9	5.50	50.00	347
2004	1,055,202	50.5	6.30	52.00	578
2005	1,421,615	34.7	6.30	52.00	832
2006	1,700,041	19.6	6.50	54.79	1,049
2007	2,015,128	18.5	6.50	54.79	1,400
2008	2,125,465	5.5	6.65	62.68	1,595
2009	2,161,577	1.7	6.45	63.57	1,561
2010	2,508,289	16.0	6.45	65.74	1,786
2011	2,881,862	14.9	6.50	66.15	1,912

### International tourist arrivals to Cambodia

Destination	Months	2007	2008	2009	2010	2011	2012	change (%) 2012*/11
<b>Cambodia</b>	<b>Q1</b>	<b>550,813</b>	<b>644,205</b>	<b>622,288</b>	<b>683,692</b>	<b>778,467</b>	<b>995,210</b>	<b>27.8</b>
<i>International tourist arrivals</i>	January	194,932	223,581	218,691	232,590	274,471	350,257	27.6
<i>by all means of</i>	February	177,130	214,902	200,789	222,354	255,499	321,870	26.0
<i>transportations</i>	March	178,751	205,722	202,808	228,748	248,497	323,083	30.0
	<b>Q2</b>	<b>424,536</b>	<b>454,031</b>	<b>464,230</b>	<b>537,464</b>	<b>606,562</b>	<b>0</b>	
	April	165,347	173,903	177,955	200,965	223,032		
	May	132,512	149,275	145,564	170,164	190,258		
	June	126,677	130,853	140,711	166,335	193,272		
	<b>Q3</b>	<b>431,815</b>	<b>449,693</b>	<b>487,422</b>	<b>582,024</b>	<b>699,760</b>	<b>0</b>	
	July	143,310	148,449	163,817	202,349	239,527		
	August	151,478	156,098	171,668	206,563	250,429		
	September	137,027	145,146	151,937	173,112	209,804		
	<b>Q4</b>	<b>607,964</b>	<b>577,536</b>	<b>587,637</b>	<b>705,109</b>	<b>797,073</b>	<b>0</b>	
	October	160,235	156,718	157,105	205,515	233,190		
	November	194,646	191,549	195,570	249,892	265,539		
	December	253,083	229,269	234,962	249,702	298,344		
	<b>Total</b>	<b>2,015,128</b>	<b>2,125,465</b>	<b>2,161,577</b>	<b>2,508,289</b>	<b>2,881,862</b>	<b>995,210</b>	<b>27.8</b>



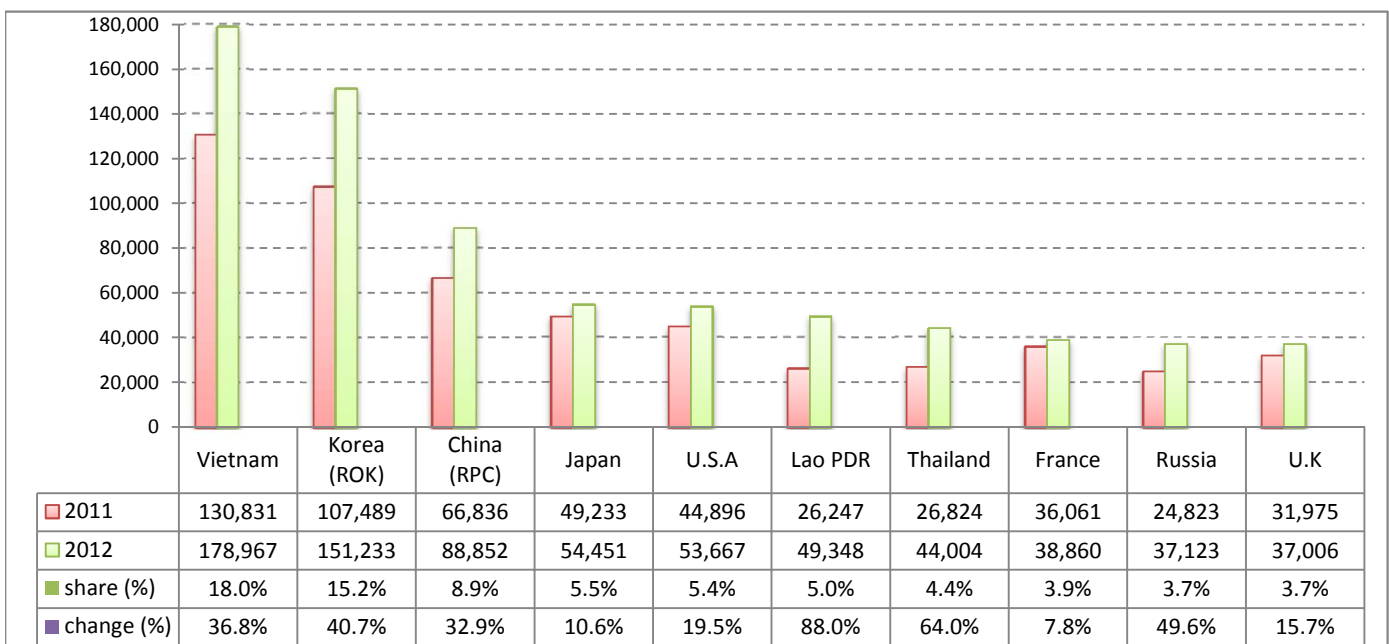
## Executive Summary Report in the First Quarter 2012

I. International tourist arrivals to Cambodia in January - March 2012 was: **995,210**

### II. Mode of arrivals

	visitors	share (%)
<b>Air</b>	<b>513,756</b>	<b>51.6</b>
Phnom Penh Int'l Airport	187,408	18.8
Siem Reap Int'l Airport	326,348	32.8
<b>Land and Water ways</b>	<b>481,454</b>	<b>48.4</b>
Land	445,420	44.8
Water ways	36,034	3.6
<b>Total</b>	<b>995,210</b>	<b>100.0</b>

### III. Top ten markets arrivals in January - March 2012



### IV. International tourist arrivals to Cambodia in January - March 2012

	Inbound		share (%)		change (%)
	2011	2012	2011	2012	2012*/11
<b>Air</b>	<b>427,429</b>	<b>513,756</b>	<b>54.9</b>	<b>51.6</b>	<b>20.2</b>
Phnom Penh Int'l Airport	170,558	187,408	21.9	18.8	9.9
Siem Reap Int'l Airport	256,871	326,348	33.0	32.8	27.0
<b>Land and Water ways</b>	<b>351,038</b>	<b>481,454</b>	<b>45.1</b>	<b>48.4</b>	<b>37.2</b>
Land	325,608	445,420	41.8	44.8	36.8
Water ways	25,430	36,034	3.3	3.6	41.7
<b>Total</b>	<b>778,467</b>	<b>995,210</b>	<b>100.0</b>	<b>100.0</b>	<b>27.8</b>

### V. Remark: Percentage share of international tourist arrivals at destinations in January - March 2012

	Arrivals		share (%)		change (%)
	2011	2012	2011	2012	2012*/11
Phnom Penh & Other Destinations	342,495	355,336	44.0	35.7	3.7
Siem Reap Province	435,972	639,874	56.0	64.3	46.8
<b>Total</b>	<b>778,467</b>	<b>995,210</b>	<b>100.0</b>	<b>100.0</b>	<b>27.8</b>

### VI. Outbound tourists departures in January - March 2012

	Outbound		change (%)
	2011	2012	2012*/11
Cambodian outbound tourists	137,317	188,267	37.1
International outbound tourists	782,927	986,757	26.0

## International Tourist Arrivals to Cambodia by Country of Residence in January - March 2012

(by all mean of transportations)

Regions Country of Residence	2011		2012			share		change	
			Purpose of Visit			Total	Female	2012*	2012*/11
			Holiday	Business	Other				
<b>GRAND TOTAL</b>	<b>778,467</b>	<b>925,957</b>	<b>37,851</b>	<b>31,402</b>	<b>995,210</b>	<b>461,480</b>	<b>100.0</b>	<b>27.8</b>	
<b>Asia and the Pacific</b>	<b>527,098</b>	<b>655,475</b>	<b>29,582</b>	<b>19,138</b>	<b>704,195</b>	<b>333,631</b>	<b>70.8</b>	<b>33.6</b>	
<b>ASEAN</b>	<b>235,409</b>	<b>316,042</b>	<b>7,824</b>	<b>13,383</b>	<b>337,249</b>	<b>158,112</b>	<b>33.9</b>	<b>43.3</b>	
Brunei Darussalam	85	218	3	67	288	111	0.0	238.8	
Indonesia	3,637	3,710	506	104	4,320	1,491	0.4	18.8	
Lao PDR	26,247	49,187	18	143	49,348	33,575	5.0	88.0	
Malaysia	22,401	23,955	1,629	148	25,732	8,851	2.6	14.9	
Myanmar	1,057	1,068	138	55	1,261	544	0.1	19.3	
Philippines	14,371	20,845	1,341	278	22,464	13,828	2.3	56.3	
Singapore	9,956	10,373	422	70	10,865	3,913	1.1	9.1	
Thailand	26,824	40,046	2,155	1,803	44,004	17,654	4.4	64.0	
Vietnam	130,831	166,640	1,612	10,715	178,967	78,145	18.0	36.8	
<b>Eastern Asia</b>	<b>252,063</b>	<b>298,928</b>	<b>19,222</b>	<b>2,472</b>	<b>320,622</b>	<b>155,801</b>	<b>32.2</b>	<b>27.2</b>	
China (RPC)	66,836	76,474	11,573	805	88,852	42,270	8.9	32.9	
Hong Kong SAR	1,295	1,665	58	10	1,733	822	0.2	33.8	
Japan	49,233	52,032	1,788	631	54,451	24,870	5.5	10.6	
Korea (ROK)	107,489	147,322	3,184	727	151,233	76,977	15.2	40.7	
Mongolia	74	104	5	19	128	66	0.0	73.0	
Taiwan, China	27,136	21,331	2,614	280	24,225	10,796	2.4	-10.7	
<b>Southern Asia</b>	<b>4,726</b>	<b>4,528</b>	<b>718</b>	<b>235</b>	<b>5,481</b>	<b>1,539</b>	<b>0.6</b>	<b>16.0</b>	
Afghanistan	69	34	3	13	50	8	0.0	-27.5	
Bangladesh	284	231	44	29	304	39	0.0	7.0	
Bhutan	28	28	0	8	36	9	0.0	28.6	
India	3,582	3,612	475	121	4,208	1,291	0.4	17.5	
Nepal	266	235	24	19	278	80	0.0	4.5	
Pakistan	262	169	98	24	291	50	0.0	11.1	
Srilanka	235	219	74	21	314	62	0.0	33.6	
<b>Western Asia</b>	<b>725</b>	<b>850</b>	<b>37</b>	<b>4</b>	<b>891</b>	<b>490</b>	<b>0.1</b>	<b>22.9</b>	
Kazakhstan	564	711	25	3	739	393	0.1	31.0	
Uzbekistan	161	139	12	1	152	97	0.0	-5.6	
<b>Oceania</b>	<b>32,236</b>	<b>34,151</b>	<b>1,565</b>	<b>2,809</b>	<b>38,525</b>	<b>17,257</b>	<b>3.9</b>	<b>19.5</b>	
Australia	28,493	30,229	1,263	2,436	33,928	15,366	3.4	19.1	
Fiji	38	26	4	0	30	7	0.0	-21.1	
New Zealand	3,705	3,896	298	373	4,567	1,884	0.5	23.3	
Other Asia & the Pacific	1,939	976	216	235	1,427	432	0.1	-26.4	
<b>Europe</b>	<b>180,672</b>	<b>197,516</b>	<b>5,302</b>	<b>4,642</b>	<b>207,460</b>	<b>90,714</b>	<b>20.8</b>	<b>14.8</b>	
<b>Northern Europe</b>	<b>50,355</b>	<b>53,871</b>	<b>1,727</b>	<b>618</b>	<b>56,216</b>	<b>22,192</b>	<b>5.6</b>	<b>11.6</b>	
Denmark	3,594	3,606	89	33	3,728	1,513	0.4	3.7	
Finland	2,851	2,408	79	46	2,533	966	0.3	-11.2	
Iceland	105	129	3	1	133	46	0.0	26.7	
Ireland	2,093	2,215	80	39	2,334	868	0.2	11.5	
Norway	3,400	3,243	63	26	3,332	1,411	0.3	-2.0	
Sweden	6,337	6,941	138	71	7,150	2,776	0.7	12.8	
United Kingdom	31,975	35,329	1,275	402	37,006	14,612	3.7	15.7	
<b>Western Europe</b>	<b>81,044</b>	<b>81,914</b>	<b>2,614</b>	<b>3,600</b>	<b>88,128</b>	<b>37,960</b>	<b>8.9</b>	<b>8.7</b>	
Austria	2,981	3,287	54	52	3,393	1,358	0.3	13.8	
Belgium	4,035	4,226	162	134	4,522	1,804	0.5	12.1	
France	36,061	34,464	1,536	2,860	38,860	17,068	3.9	7.8	
Germany	24,657	26,133	469	293	26,895	11,112	2.7	9.1	
Luxembourg	171	131	2	4	137	58	0.0	-19.9	
Monaco	9	10	0	0	10	6	0.0	11.1	
Netherlands	6,866	7,259	194	99	7,552	3,086	0.8	10.0	
Switzerland	6,264	6,404	197	158	6,759	3,468	0.7	7.9	
<b>Eastern Europe</b>	<b>34,260</b>	<b>46,883</b>	<b>424</b>	<b>100</b>	<b>47,407</b>	<b>24,228</b>	<b>4.8</b>	<b>38.4</b>	
Bulgaria	146	213	2	0	215	118	0.0	47.3	
Czech Republic	1,271	1,723	24	8	1,755	729	0.2	38.1	
Estonia	454	400	5	4	409	179	0.0	-9.9	
Hungary	1,261	1,152	16	4	1,172	494	0.1	-7.1	
Lithuania	769	455	7	0	462	258	0.0	-39.9	
Poland	3,243	3,431	18	18	3,467	1,722	0.3	6.9	
Romania	345	395	13	5	413	251	0.0	19.7	
Russian Federation	24,823	36,784	288	51	37,123	19,319	3.7	49.6	
Slovakia	470	543	27	6	576	236	0.1	22.6	
Ukraine	1,478	1,787	24	4	1,815	922	0.2	22.8	

## International Tourist Arrivals to Cambodia by Country of Residence in January - March 2012

(by all mean of transportations)

Regions Country of Residence	2011		2012			share		change	
			Purpose of Visit			Total	Female	(%)	(%)
			Holiday	Business	Other			2012*	2012*/11
<b>GRAND TOTAL</b>	<b>778,467</b>	<b>925,957</b>	<b>37,851</b>	<b>31,402</b>	<b>995,210</b>	<b>461,480</b>	<b>100.0</b>	<b>27.8</b>	
<b>Southern Europe</b>	<b>13,283</b>	<b>14,055</b>	<b>332</b>	<b>206</b>	<b>14,593</b>	<b>5,842</b>	<b>1.5</b>	<b>9.9</b>	
Croatia	188	248	5	1	254	126	0.0	35.1	
Greece	439	294	3	3	300	96	0.0	-31.7	
Italy	7,395	7,384	165	66	7,615	2,911	0.8	3.0	
Portugal	756	630	16	12	658	275	0.1	-13.0	
Serbia	163	123	9	1	133	68	0.0	-18.4	
Slovenia	246	383	10	2	395	161	0.0	60.6	
Spain	2,982	4,130	83	78	4,291	1,929	0.4	43.9	
Turkey	1,114	863	41	43	947	276	0.1	-15.0	
Other Europe	1,730	793	205	118	1,116	492	0.1	-35.5	
<b>Americas</b>	<b>66,116</b>	<b>68,164</b>	<b>2,722</b>	<b>7,516</b>	<b>78,402</b>	<b>35,129</b>	<b>7.9</b>	<b>18.6</b>	
Argentina	1,357	1,940	8	15	1,963	984	0.2	44.7	
Brazil	1,147	1,753	10	22	1,785	882	0.2	55.6	
Canada	14,634	15,995	577	1,063	17,635	7,821	1.8	20.5	
Chile	911	1,145	2	4	1,151	593	0.1	26.3	
Colombia	1,119	278	5	9	292	147	0.0	-73.9	
Costa Rica	54	101	2	1	104	57	0.0	92.6	
Ecuador	42	29	0	6	35	20	0.0	-16.7	
Mexico	657	870	13	11	894	430	0.1	36.1	
Peru	105	145	4	2	151	63	0.0	43.8	
United States	44,896	45,321	2,047	6,299	53,667	23,811	5.4	19.5	
Uruguay	96	65	0	7	72	26	0.0	-25.0	
Other Americas	1,098	522	54	77	653	295	0.1	-40.5	
<b>Africa</b>	<b>1,558</b>	<b>1,190</b>	<b>150</b>	<b>63</b>	<b>1,403</b>	<b>582</b>	<b>0.1</b>	<b>-9.9</b>	
Cameroon	97	63	1	5	69	17	0.0	-28.9	
Congo	40	19	0	3	22	3	0.0	-45.0	
Ghana	133	51	5	2	58	5	0.0	-56.4	
Kenya	54	51	8	9	68	32	0.0	25.9	
Liberia	125	35	0	0	35	6	0.0	-72.0	
Nigeria	127	84	70	13	167	32	0.0	31.5	
Sudan	7	11	1	1	13	3	0.0	85.7	
South Africa	770	770	51	10	831	433	0.1	7.9	
Uganda	70	13	0	4	17	7	0.0	-75.7	
Other Africa	135	93	14	16	123	44	0.0	-8.9	
<b>Middle East</b>	<b>3,023</b>	<b>3,612</b>	<b>95</b>	<b>43</b>	<b>3,750</b>	<b>1,424</b>	<b>0.4</b>	<b>24.0</b>	
Egypt	36	38	5	8	51	9	0.0	41.7	
Iran	189	172	2	2	176	54	0.0	-6.9	
Iraq	9	24	0	1	25	6	0.0	177.8	
Israel	2,439	2,972	68	14	3,054	1,289	0.3	25.2	
Kuwait	114	167	0	1	168	7	0.0	47.4	
Oman	22	24	0	4	28	1	0.0	27.3	
Palestine	10	8	0	0	8	2	0.0	-20.0	
Qatar	31	34	0	0	34	22	0.0	9.7	
Saudi Arabia	18	21	1	2	24	1	0.0	33.3	
United Arab Emirates	30	47	0	0	47	1	0.0	56.7	
Yemen	28	26	2	0	28	4	0.0	0.0	
Other Middle East	97	79	17	11	107	28	0.0	10.3	

### Remark:

- Cambodian Overseas:
- Cambodian Residence:

- Cambodian outbound tourist departures: 188,267  
 - International outbound tourist departures: 986,757

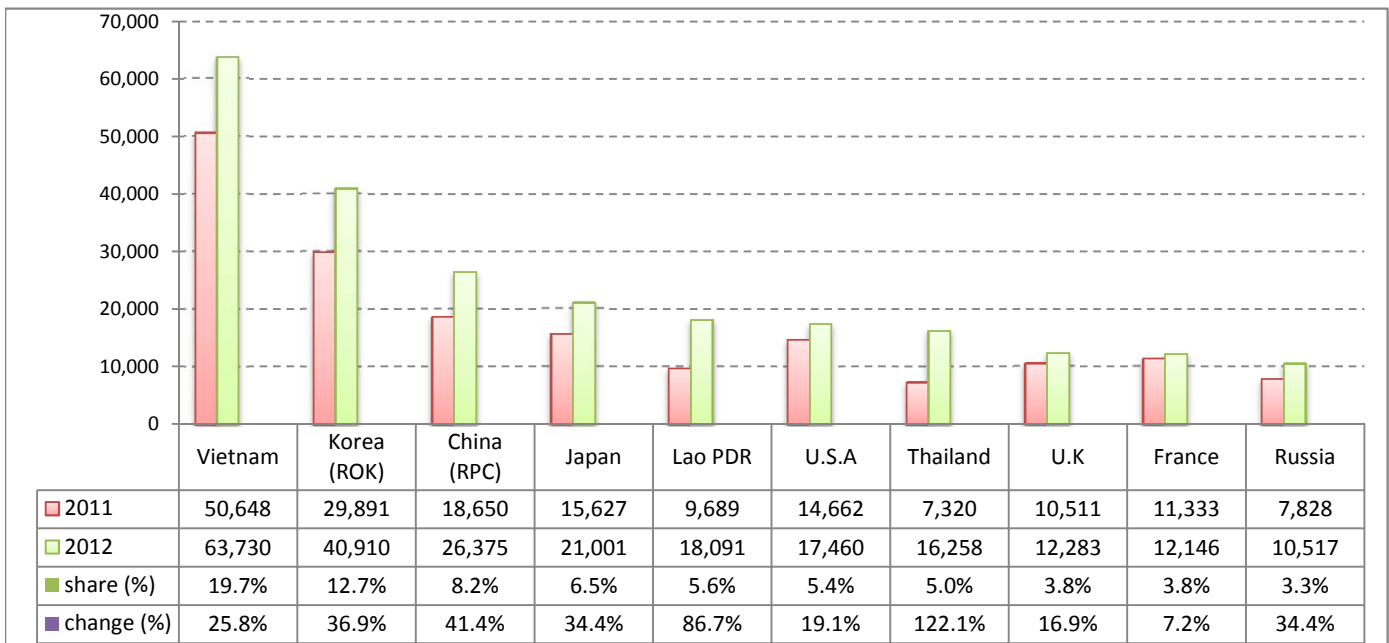
## Executive Summary Report in March 2012

I. International tourist arrivals to Cambodia in March 2012 was: **323,083**

### II. Mode of arrivals

	visitors	share (%)
<b>Air</b>	<b>160,109</b>	<b>49.6</b>
Phnom Penh Int'l Airport	62,330	19.3
Siem Reap Int'l Airport	97,779	30.3
<b>Land and Water ways</b>	<b>162,974</b>	<b>50.4</b>
Land	149,740	46.3
Waterway	13,234	4.1
<b>Total</b>	<b>323,083</b>	<b>100.0</b>

### III. Top ten markets arrivals in March 2012



### IV. International tourist arrivals to Cambodia in March 2012

	Inbound		share (%)		change (%)
	2011	2012	2011	2012	2012*/11
<b>Air</b>	<b>130,240</b>	<b>160,109</b>	<b>52.4</b>	<b>49.6</b>	<b>22.9</b>
Phnom Penh Int'l Airport	54,451	62,330	21.9	19.3	14.5
Siem Reap Int'l Airport	75,789	97,779	30.5	30.3	29.0
<b>Land and Water ways</b>	<b>118,257</b>	<b>162,974</b>	<b>47.6</b>	<b>50.4</b>	<b>37.8</b>
Land	108,662	149,740	43.7	46.3	37.8
Waterway	9,595	13,234	3.9	4.1	37.9
<b>Total</b>	<b>248,497</b>	<b>323,083</b>	<b>100.0</b>	<b>100.0</b>	<b>30.0</b>

### V. Remark: Percentage share of international tourist arrivals at destinations in March 2012

	Arrivals		share (%)		change (%)
	2011	2012	2011	2012	2012*/11
Phnom Penh & Other Destinations	125,472	124,486	50.5	38.5	-0.8
Siem Reap Province	123,025	198,597	49.5	61.5	61.4
<b>Total</b>	<b>248,497</b>	<b>323,083</b>	<b>100.0</b>	<b>100.0</b>	<b>30.0</b>

### VI. Outbound tourists departures in March 2012

	Outbound		change (%)
	2011	2012	2012*/11
Cambodian outbound tourists	47,552	57,684	21.3
International outbound tourists	250,261	318,776	27.4

## International Tourist Arrivals to Cambodia by Country of Residence in March 2012

(by all mean of transportations)

Regions Country of Residence	2011		2012			share		change	
			Purpose of Visit			Total	Female	(%)	(%)
			Holiday	Business	Other			2012*	2012*/11
<b>GRAND TOTAL</b>	<b>248,497</b>	<b>299,180</b>	<b>12,562</b>	<b>11,341</b>	<b>323,083</b>	<b>150,351</b>	<b>100.0</b>	<b>30.0</b>	
<b>Asia and the Pacific</b>	<b>170,911</b>	<b>216,926</b>	<b>9,794</b>	<b>5,402</b>	<b>232,122</b>	<b>109,499</b>	<b>71.8</b>	<b>35.8</b>	
<b>ASEAN</b>	<b>86,697</b>	<b>116,935</b>	<b>2,405</b>	<b>2,558</b>	<b>121,898</b>	<b>59,644</b>	<b>37.7</b>	<b>40.6</b>	
Brunei Darussalam	21	142	1	37	180	76	0.1	757.1	
Indonesia	1,281	1,233	156	40	1,429	413	0.4	11.6	
Lao PDR	9,689	18,027	9	55	18,091	12,303	5.6	86.7	
Malaysia	8,341	8,784	442	58	9,284	3,175	2.9	11.3	
Myanmar	412	413	46	28	487	191	0.2	18.2	
Philippines	5,154	7,346	391	119	7,856	4,765	2.4	52.4	
Singapore	3,831	4,440	117	26	4,583	1,746	1.4	19.6	
Thailand	7,320	14,663	736	859	16,258	6,718	5.0	122.1	
Vietnam	50,648	61,887	507	1,336	63,730	30,257	19.7	25.8	
<b>Eastern Asia</b>	<b>73,495</b>	<b>88,914</b>	<b>6,444</b>	<b>994</b>	<b>96,352</b>	<b>44,406</b>	<b>29.8</b>	<b>31.1</b>	
China (RPC)	18,650	22,384	3,737	254	26,375	11,626	8.2	41.4	
Hong Kong SAR	328	705	18	9	732	367	0.2	123.2	
Japan	15,627	20,074	669	258	21,001	9,555	6.5	34.4	
Korea (ROK)	29,891	39,504	1,134	272	40,910	19,927	12.7	36.9	
Mongolia	23	37	2	10	49	26	0.0	113.0	
Taiwan, China	8,976	6,210	884	191	7,285	2,905	2.3	-18.8	
<b>Southern Asia</b>	<b>1,503</b>	<b>1,569</b>	<b>246</b>	<b>94</b>	<b>1,909</b>	<b>506</b>	<b>0.6</b>	<b>27.0</b>	
Afghanistan	5	10	2	1	13	3	0.0	160.0	
Bangladesh	101	77	9	13	99	12	0.0	-2.0	
Bhutan	12	7	0	0	7	2	0.0	-41.7	
India	1,089	1,233	156	40	1,429	413	0.4	31.2	
Nepal	98	83	11	12	106	30	0.0	8.2	
Pakistan	102	67	38	11	116	24	0.0	13.7	
Sri Lanka	96	92	30	17	139	22	0.0	44.8	
<b>Western Asia</b>	<b>210</b>	<b>267</b>	<b>10</b>	<b>2</b>	<b>279</b>	<b>154</b>	<b>0.1</b>	<b>32.9</b>	
Kazakhstan	169	218	6	2	226	122	0.1	33.7	
Uzbekistan	41	49	4	0	53	32	0.0	29.3	
<b>Oceania</b>	<b>8,670</b>	<b>8,775</b>	<b>505</b>	<b>1,549</b>	<b>10,829</b>	<b>4,625</b>	<b>3.4</b>	<b>24.9</b>	
Australia	7,532	7,818	401	1,358	9,577	4,158	3.0	27.2	
Fiji	21	8	2	0	10	2	0.0	-52.4	
New Zealand	1,117	949	102	191	1,242	465	0.4	11.2	
Other Asia & the Pacific	336	466	184	205	855	164	0.3	154.5	
<b>Europe</b>	<b>55,225</b>	<b>60,913</b>	<b>1,763</b>	<b>1,930</b>	<b>64,606</b>	<b>29,149</b>	<b>20.0</b>	<b>17.0</b>	
<b>Northern Europe</b>	<b>15,882</b>	<b>16,857</b>	<b>502</b>	<b>235</b>	<b>17,594</b>	<b>7,340</b>	<b>5.4</b>	<b>10.8</b>	
Denmark	857	1,078	33	19	1,130	448	0.3	31.9	
Finland	1,060	612	19	14	645	229	0.2	-39.2	
Iceland	17	45	0	0	45	20	0.0	164.7	
Ireland	678	653	22	11	686	274	0.2	1.2	
Norway	1,050	943	15	12	970	411	0.3	-7.6	
Sweden	1,709	1,783	35	17	1,835	744	0.6	7.4	
United Kingdom	10,511	11,743	378	162	12,283	5,214	3.8	16.9	
<b>Western Europe</b>	<b>24,719</b>	<b>26,108</b>	<b>828</b>	<b>1,522</b>	<b>28,458</b>	<b>12,462</b>	<b>8.8</b>	<b>15.1</b>	
Austria	803	863	18	23	904	385	0.3	12.6	
Belgium	1,124	1,605	66	64	1,735	744	0.5	54.4	
France	11,333	10,460	465	1,221	12,146	5,364	3.8	7.2	
Germany	7,870	9,525	161	92	9,778	4,305	3.0	24.2	
Luxembourg	66	36	1	0	37	19	0.0	-43.9	
Monaco	1	2	0	0	2	1	0.0	100.0	
Netherlands	1,957	1,927	60	38	2,025	858	0.6	3.5	
Switzerland	1,565	1,690	57	84	1,831	786	0.6	17.0	
<b>Eastern Europe</b>	<b>10,775</b>	<b>13,302</b>	<b>125</b>	<b>29</b>	<b>13,456</b>	<b>7,223</b>	<b>4.2</b>	<b>24.9</b>	
Bulgaria	37	49	0	0	49	32	0.0	32.4	
Czech Republic	385	514	6	3	523	230	0.2	35.8	
Estonia	144	113	2	0	115	54	0.0	-20.1	
Hungary	353	303	7	1	311	142	0.1	-11.9	
Lithuania	249	159	6	0	165	101	0.1	-33.7	
Poland	1,081	947	10	8	965	473	0.3	-10.7	
Romania	95	130	4	1	135	90	0.0	42.1	
Russian Federation	7,828	10,423	81	13	10,517	5,768	3.3	34.4	
Slovakia	192	197	6	2	205	84	0.1	6.8	
Ukraine	411	467	3	1	471	249	0.1	14.6	

## International Tourist Arrivals to Cambodia by Country of Residence in March 2012

(by all mean of transportations)

Regions Country of Residence	2011	2012			Total	Female	share	change
		Purpose of Visit					(%)	(%)
		Holiday	Business	Other			2012*	2012*/11
<b>GRAND TOTAL</b>	<b>248,497</b>	<b>299,180</b>	<b>12,562</b>	<b>11,341</b>	<b>323,083</b>	<b>150,351</b>	<b>100.0</b>	<b>30.0</b>
<b>Southern Europe</b>	<b>3,557</b>	<b>4,223</b>	<b>122</b>	<b>42</b>	<b>4,387</b>	<b>1,851</b>	<b>1.4</b>	<b>23.3</b>
Croatia	39	83	1	0	84	57	0.0	115.4
Greece	119	81	2	0	83	26	0.0	-30.3
Italy	1,742	1,902	65	20	1,987	768	0.6	14.1
Portugal	294	214	10	3	227	96	0.1	-22.8
Serbia	38	32	1	0	33	26	0.0	-13.2
Slovenia	42	120	3	0	123	56	0.0	192.9
Spain	1,056	1,514	28	13	1,555	735	0.5	47.3
Turkey	227	277	12	6	295	87	0.1	30.0
Other Europe	292	423	186	102	711	273	0.2	143.5
<b>Americas</b>	<b>21,023</b>	<b>20,025</b>	<b>896</b>	<b>3,983</b>	<b>24,904</b>	<b>11,165</b>	<b>7.7</b>	<b>18.5</b>
Argentina	409	432	3	12	447	223	0.1	9.3
Brazil	264	412	4	5	421	217	0.1	59.5
Canada	4,687	4,663	151	495	5,309	2,390	1.6	13.3
Chile	275	299	1	2	302	168	0.1	9.8
Colombia	65	96	3	3	102	46	0.0	56.9
Costa Rica	25	21	1	1	23	12	0.0	-8.0
Ecuador	12	13	0	1	14	7	0.0	16.7
Mexico	315	350	3	3	356	174	0.1	13.0
Peru	31	56	0	1	57	24	0.0	83.9
United States	14,662	13,385	687	3,388	17,460	7,768	5.4	19.1
Uruguay	28	22	0	7	29	10	0.0	3.6
Other Americas	250	276	43	65	384	126	0.1	53.6
<b>Africa</b>	<b>506</b>	<b>375</b>	<b>62</b>	<b>12</b>	<b>449</b>	<b>181</b>	<b>0.1</b>	<b>-11.3</b>
Cameroon	42	19	0	0	19	4	0.0	-54.8
Congo	10	4	0	0	4	1	0.0	-60.0
Ghana	53	25	1	0	26	2	0.0	-50.9
Kenya	22	13	2	1	16	5	0.0	-27.3
Liberia	37	14	0	0	14	3	0.0	-62.2
Nigeria	37	25	24	1	50	8	0.0	35.1
Sudan	2	5	0	0	5	0	0.0	150.0
South Africa	227	217	23	0	240	137	0.1	5.7
Uganda	26	5	0	0	5	3	0.0	-80.8
Other Africa	50	48	12	10	70	18	0.0	40.0
<b>Middle East</b>	<b>832</b>	<b>941</b>	<b>47</b>	<b>14</b>	<b>1,002</b>	<b>357</b>	<b>0.3</b>	<b>20.4</b>
Egypt	12	10	3	1	14	1	0.0	16.7
Iran	56	64	0	2	66	26	0.0	17.9
Iraq	6	10	0	0	10	1	0.0	66.7
Israel	638	689	28	3	720	292	0.2	12.9
Kuwait	40	34	0	0	34	2	0.0	-15.0
Oman	7	10	0	0	10	0	0.0	42.9
Palestine	7	6	0	0	6	1	0.0	-14.3
Qatar	5	31	0	0	31	22	0.0	520.0
Saudi Arabia	9	4	0	0	4	0	0.0	-55.6
United Arab Emirates	12	25	0	0	25	0	0.0	108.3
Yemen	10	13	2	0	15	2	0.0	50.0
Other Middle East	30	45	14	8	67	10	0.0	123.3

### Remark:

- Cambodian Overseas:
- Cambodian Residence:

- Cambodian outbound tourist departures: 57,684  
 - International outbound tourist departures: 318,776



**COMPILED BY:**

1. Mr. Kong Sopheareak

Director  
Statistics & Tourism Information Department  
Fax: +855 23 885003  
E-mail: kong@mot.gov.kh

2. Mr. Horth Vanny

Chief of Tourism Statistics Office  
Compile and data analysis  
Tel.: +855 12 827664