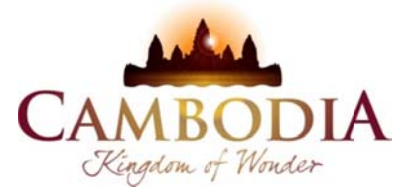




KINGDOM OF CAMBODIA
NATION RELIGION KING



TOURISM STATISTICS REPORT

January 2012

MINISTRY OF TOURISM

Statistics and Tourism Information Department

No. A3, Street 169, Sangkat Veal Vong, Khan 7 Makara, Phnom Penh, Cambodia.

Fax: +855 23 885003

E-mail: kong@mot.gov.kh

Web site: www.mot.gov.kh

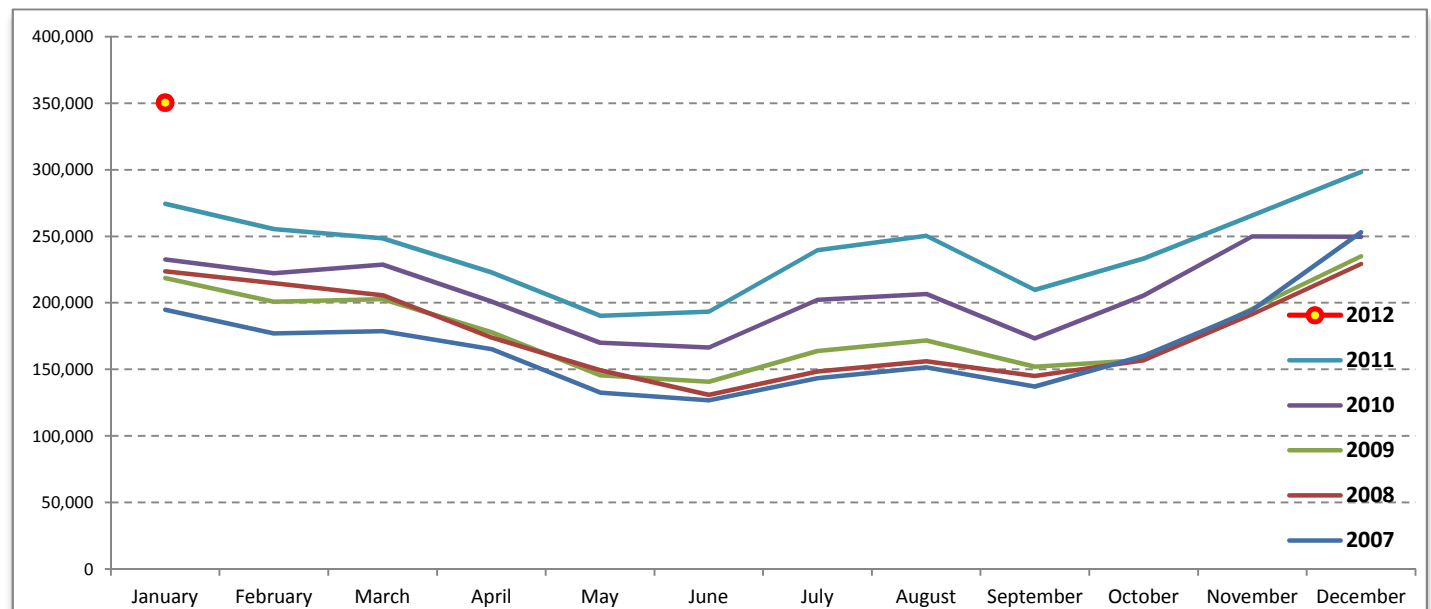
Tourism Highlights

International Tourist Arrivals, Average Length of Stay, Hotels Occupancy & Tourism Receipts 1993 - 2011

Years	Tourist Arrivals		Average Length	Hotels Occupancy	Tourism Receipts
	number	change (%)	of Stay (days)	(%)	(Million US\$)
1993	118,183	-	N/A	N/A	N/A
1994	176,617	49.4	N/A	N/A	N/A
1995	219,680	24.4	8.00	37.00	100
1996	260,489	18.6	7.50	40.00	118
1997	218,843	-16.0	6.40	30.00	103
1998	286,524	30.9	5.20	40.00	166
1999	367,743	28.3	5.50	44.00	190
2000	466,365	26.8	5.50	45.00	228
2001	604,919	29.7	5.50	48.00	304
2002	786,524	30.0	5.80	50.00	379
2003	701,014	-10.9	5.50	50.00	347
2004	1,055,202	50.5	6.30	52.00	578
2005	1,421,615	34.7	6.30	52.00	832
2006	1,700,041	19.6	6.50	54.79	1,049
2007	2,015,128	18.5	6.50	54.79	1,400
2008	2,125,465	5.5	6.65	62.68	1,595
2009	2,161,577	1.7	6.45	63.57	1,561
2010	2,508,289	16.0	6.45	65.74	1,786
2011	2,881,862	14.9	6.50	66.15	1,912

International tourist arrivals to Cambodia

Destination	Months	2007	2008	2009	2010	2011	2012	change (%) 2012*/11
Cambodia	Q1	550,813	644,205	622,288	683,692	778,467	350,257	
<i>International tourist arrivals</i>	January	194,932	223,581	218,691	232,590	274,471	350,257	27.6
<i>by all means of</i>	February	177,130	214,902	200,789	222,354	255,499		
<i>transportations</i>	March	178,751	205,722	202,808	228,748	248,497		
	Q2	424,536	454,031	464,230	537,464	606,562	0	
	April	165,347	173,903	177,955	200,965	223,032		
	May	132,512	149,275	145,564	170,164	190,258		
	June	126,677	130,853	140,711	166,335	193,272		
	Q3	431,815	449,693	487,422	582,024	699,760	0	
	July	143,310	148,449	163,817	202,349	239,527		
	August	151,478	156,098	171,668	206,563	250,429		
	September	137,027	145,146	151,937	173,112	209,804		
	Q4	607,964	577,536	587,637	705,109	797,073	0	
	October	160,235	156,718	157,105	205,515	233,190		
	November	194,646	191,549	195,570	249,892	265,539		
	December	253,083	229,269	234,962	249,702	298,344		
	Total	2,015,128	2,125,465	2,161,577	2,508,289	2,881,862	350,257	27.6



Source: Statistics and ICT Department, MOT

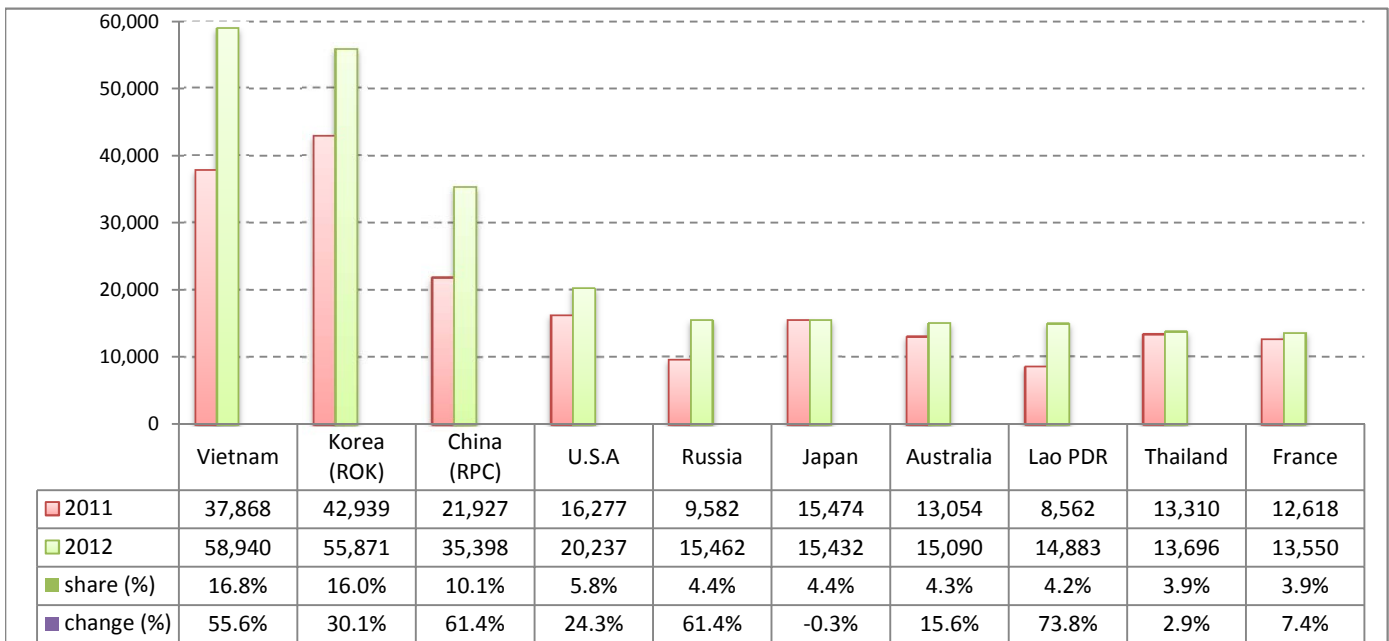
Executive Summary Report in January 2012

I. International tourist arrivals to Cambodia in January 2012 was: **350,257**

II. Mode of arrivals

	visitors	share (%)
Air	185,499	53.0
Phnom Penh Int'l Airport	65,956	18.8
Siem Reap Int'l Airport	119,543	34.1
Land and Water ways	164,758	47.0
Land	153,385	43.8
Water ways	11,373	3.2
Total	350,257	100.0

III. Top ten markets arrivals in January 2012



IV. International tourist arrivals to Cambodia in January 2012

	Inbound		share (%)		change (%)
	2011	2012	2011	2012	2012*/11
Air	152,181	185,499	55.4	53.0	21.9
Phnom Penh Int'l Airport	58,905	65,956	21.5	18.8	12.0
Siem Reap Int'l Airport	93,276	119,543	34.0	34.1	28.2
Land and Water ways	122,290	164,758	44.6	47.0	34.7
Land	114,179	153,385	41.6	43.8	34.3
Water ways	8,111	11,373	3.0	3.2	40.2
Total	274,471	350,257	100.0	100.0	27.6

V. Remark: Percentage share of international tourist arrivals at destinations in January 2012

	Arrivals		share (%)		change (%)
	2011	2012	2011	2012	2012*/11
Phnom Penh & Other Destinations	108,117	126,112	39.4	36.0	16.6
Siem Reap Province	166,354	224,145	60.6	64.0	34.7
Total	274,471	350,257	100.0	100.0	27.6

VI. Outbound tourists departures in January 2012

	Outbound		change (%)
	2011	2012	2012*/11
Cambodian outbound tourists	47,641	71,541	50.2
International outbound tourists	279,303	356,884	27.8

International Tourist Arrivals to Cambodia by Country of Residence in January 2012

(by all mean of transportations)

Regions Country of Residence	2011		2012			share		change	
			Purpose of Visit			Total	Female	(%)	(%)
			Holiday	Business	Other			2012*	2012*/11
GRAND TOTAL	274,471	334,484	12,820	2,953	350,257	162,924	100.0	27.6	
Asia and the Pacific	182,879	232,833	9,825	1,541	244,199	117,142	69.7	33.5	
ASEAN	75,841	104,617	3,249	602	108,468	49,648	31.0	43.0	
Brunei Darussalam	42	40	1	20	61	18	0.0	45.2	
Indonesia	1,401	1,208	189	37	1,434	546	0.4	2.4	
Lao PDR	8,562	14,821	4	58	14,883	10,326	4.2	73.8	
Malaysia	6,343	7,793	705	17	8,515	2,963	2.4	34.2	
Myanmar	321	338	45	19	402	157	0.1	25.2	
Philippines	4,873	6,890	574	104	7,568	4,713	2.2	55.3	
Singapore	3,121	2,742	199	28	2,969	1,036	0.8	-4.9	
Thailand	13,310	12,722	862	112	13,696	5,230	3.9	2.9	
Vietnam	37,868	58,063	670	207	58,940	24,659	16.8	55.6	
Eastern Asia	89,508	109,609	5,646	667	115,922	58,490	33.1	29.5	
China (RPC)	21,927	31,997	3,192	209	35,398	18,037	10.1	61.4	
Hong Kong SAR	358	606	23	0	629	304	0.2	75.7	
Japan	15,474	14,640	570	222	15,432	7,162	4.4	-0.3	
Korea (ROK)	42,939	54,546	1,092	233	55,871	29,002	16.0	30.1	
Mongolia	27	38	1	3	42	25	0.0	55.6	
Taiwan, China	8,783	7,782	768	0	8,550	3,960	2.4	-2.7	
Southern Asia	1,679	1,541	252	79	1,872	551	0.5	11.5	
Afghanistan	5	18	0	3	21	5	0.0	320.0	
Bangladesh	98	70	25	8	103	15	0.0	5.1	
Bhutan	8	8	0	3	11	4	0.0	37.5	
India	1,309	1,250	165	56	1,471	464	0.4	12.4	
Nepal	87	66	6	4	76	23	0.0	-12.6	
Pakistan	89	55	32	3	90	11	0.0	1.1	
Srilanka	83	74	24	2	100	29	0.0	20.5	
Western Asia	296	349	13	2	364	203	0.1	23.0	
Kazakhstan	223	288	7	1	296	158	0.1	32.7	
Uzbekistan	73	61	6	1	68	45	0.0	-6.8	
Oceania	14,746	16,486	654	179	17,319	8,116	4.9	17.4	
Australia	13,054	14,431	514	145	15,090	7,130	4.3	15.6	
Fiji	8	8	1	0	9	1	0.0	12.5	
New Zealand	1,684	2,047	139	34	2,220	985	0.6	31.8	
Other Asia & the Pacific	809	231	11	12	254	134	0.1	-68.6	
Europe	65,998	72,186	1,985	822	74,993	31,930	21.4	13.6	
Northern Europe	17,536	18,666	683	176	19,525	7,195	5.6	11.3	
Denmark	1,411	1,390	27	5	1,422	551	0.4	0.8	
Finland	1,023	1,016	26	16	1,058	429	0.3	3.4	
Iceland	60	52	0	0	52	17	0.0	-13.3	
Ireland	790	803	34	14	851	304	0.2	7.7	
Norway	1,147	1,176	22	6	1,204	470	0.3	5.0	
Sweden	2,488	2,789	70	23	2,882	1,098	0.8	15.8	
United Kingdom	10,617	11,440	504	112	12,056	4,326	3.4	13.6	
Western Europe	29,195	29,097	1,015	486	30,598	13,174	8.7	4.8	
Austria	1,076	1,169	18	15	1,202	447	0.3	11.7	
Belgium	1,547	1,377	56	38	1,471	556	0.4	-4.9	
France	12,618	12,646	622	282	13,550	5,835	3.9	7.4	
Germany	8,482	8,079	163	111	8,353	3,238	2.4	-1.5	
Luxembourg	57	51	0	1	52	18	0.0	-8.8	
Monaco	1	6	0	0	6	5	0.0	500.0	
Netherlands	2,844	3,072	79	29	3,180	1,270	0.9	11.8	
Switzerland	2,570	2,697	77	10	2,784	1,805	0.8	8.3	
Eastern Europe	12,989	18,987	172	47	19,206	9,366	5.5	47.9	
Bulgaria	70	85	0	0	85	44	0.0	21.4	
Czech Republic	454	595	15	0	610	240	0.2	34.4	
Estonia	151	122	0	2	124	59	0.0	-17.9	
Hungary	519	423	4	3	430	163	0.1	-17.1	
Lithuania	245	160	1	0	161	90	0.0	-34.3	
Poland	1,022	1,249	6	5	1,260	621	0.4	23.3	
Romania	169	181	5	4	190	112	0.1	12.4	
Russian Federation	9,582	15,317	115	30	15,462	7,620	4.4	61.4	
Slovakia	153	178	13	3	194	83	0.1	26.8	
Ukraine	624	677	13	0	690	334	0.2	10.6	

Source: Statistics and ICT Department, MOT

International Tourist Arrivals to Cambodia by Country of Residence in January 2012

(by all mean of transportations)

Regions Country of Residence	2011		2012			share		change	
			Purpose of Visit			Total	Female	(%)	(%)
			Holiday	Business	Other			2012*	2012*/11
GRAND TOTAL	274,471	334,484	12,820	2,953	350,257	162,924	100.0	27.6	
Southern Europe	5,500	5,212	106	104	5,422	2,074	1.5	-1.4	
Croatia	94	106	2	1	109	47	0.0	16.0	
Greece	148	118	0	3	121	36	0.0	-18.2	
Italy	3,344	2,913	61	24	2,998	1,108	0.9	-10.3	
Portugal	246	250	1	9	260	104	0.1	5.7	
Serbia	63	66	4	1	71	30	0.0	12.7	
Slovenia	132	125	5	0	130	46	0.0	-1.5	
Spain	1,151	1,333	20	46	1,399	613	0.4	21.5	
Turkey	322	301	13	20	334	90	0.1	3.7	
Other Europe	778	224	9	9	242	121	0.1	-68.9	
Americas	23,843	27,680	949	553	29,182	13,109	8.3	22.4	
Argentina	615	851	2	0	853	449	0.2	38.7	
Brazil	569	774	4	9	787	388	0.2	38.3	
Canada	5,260	5,983	175	83	6,241	2,668	1.8	18.7	
Chile	257	315	1	0	316	153	0.1	23.0	
Colombia	117	129	1	5	135	74	0.0	15.4	
Costa Rica	17	53	1	0	54	30	0.0	217.6	
Ecuador	15	6	0	3	9	5	0.0	-40.0	
Mexico	192	321	3	7	331	156	0.1	72.4	
Peru	50	48	4	0	52	19	0.0	4.0	
United States	16,277	19,045	753	439	20,237	9,063	5.8	24.3	
Uruguay	59	26	0	0	26	7	0.0	-55.9	
Other Americas	415	129	5	7	141	97	0.0	-66.0	
Africa	605	478	36	26	540	251	0.2	-10.7	
Cameroon	30	17	1	5	23	10	0.0	-23.3	
Congo	15	4	0	0	4	1	0.0	-73.3	
Ghana	49	10	3	1	14	2	0.0	-71.4	
Kenya	15	26	1	7	34	18	0.0	126.7	
Liberia	46	9	0	0	9	2	0.0	-80.4	
Nigeria	39	23	16	0	39	5	0.0	0.0	
Sudan	3	4	0	0	4	2	0.0	33.3	
South Africa	342	355	15	9	379	195	0.1	10.8	
Uganda	25	6	0	1	7	2	0.0	-72.0	
Other Africa	41	24	0	3	27	14	0.0	-34.1	
Middle East	1,146	1,307	25	11	1,343	492	0.4	17.2	
Egypt	12	13	2	0	15	4	0.0	25.0	
Iran	77	63	2	0	65	18	0.0	-15.6	
Iraq	2	3	0	1	4	0	0.0	100.0	
Israel	944	1,083	20	2	1,105	458	0.3	17.1	
Kuwait	35	80	0	1	81	0	0.0	131.4	
Oman	11	13	0	4	17	1	0.0	54.5	
Palestine	2	0	0	0	0	0	0.0	-100.0	
Qatar	3	2	0	0	2	0	0.0	-33.3	
Saudi Arabia	5	9	1	1	11	0	0.0	120.0	
United Arab Emirates	9	11	0	0	11	0	0.0	22.2	
Yemen	14	11	0	0	11	1	0.0	-21.4	
Other Middle East	32	19	0	2	21	10	0.0	-34.4	

Remark:

- Cambodian Overseas:	7,712
- Cambodian Residence:	70,674
- Cambodian outbound tourist departures:	71,541
- International outbound tourist departures:	356,884

COMPILED BY:

1. Mr. Kong Sopheareak

Director
Statistics & Tourism Information Department
Fax: +855 23 885003
E-mail: kong@mot.gov.kh

2. Mr. Horth Vanny

Chief of Tourism Statistics Office
Compile and data analysis
Tel.: +855 12 827664