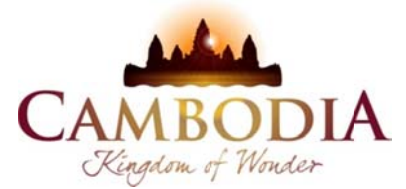




KINGDOM OF CAMBODIA  
NATION RELIGION KING



# TOURISM STATISTICS REPORT

**in**  
**2011**

**MINISTRY OF TOURISM**

Statistics and Tourism Information Department

No. A3, Street 169, Sangkat Veal Vong, Khan 7 Makara, Phnom Penh, Cambodia.

Fax: +855 23 885003

E-mail: [kong@mot.gov.kh](mailto:kong@mot.gov.kh)

Web site: [www.mot.gov.kh](http://www.mot.gov.kh)

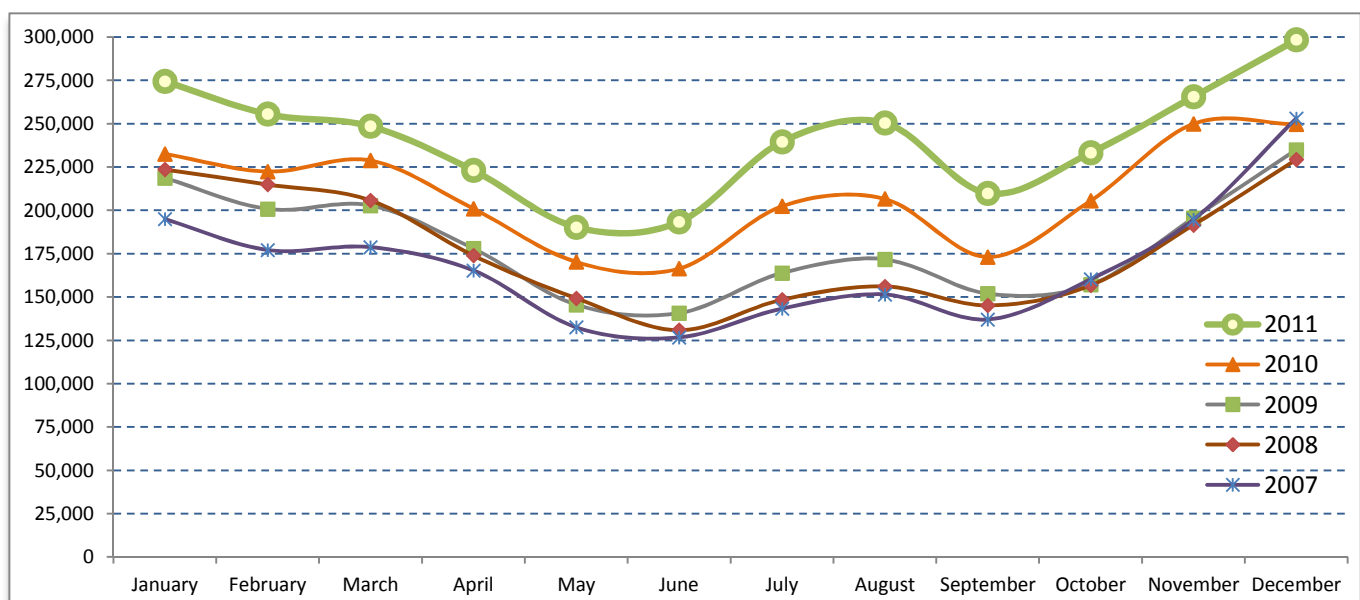
## Tourism Highlights

### International Tourist Arrivals, Average Length of Stay, Hotels Occupancy & Tourism Receipts 1993 - 2010

| Years | Tourist Arrivals |            | Average Length | Hotels Occupancy | Tourism Receipts |
|-------|------------------|------------|----------------|------------------|------------------|
|       | number           | change (%) | of Stay (days) | (%)              | (million US\$)   |
| 1993  | 118,183          | -          | N/A            | N/A              | N/A              |
| 1994  | 176,617          | 49.4%      | N/A            | N/A              | N/A              |
| 1995  | 219,680          | 24.4%      | 8.00           | 37.00            | 100              |
| 1996  | 260,489          | 18.6%      | 7.50           | 40.00            | 118              |
| 1997  | 218,843          | -16.0%     | 6.40           | 30.00            | 103              |
| 1998  | 286,524          | 30.9%      | 5.20           | 40.00            | 166              |
| 1999  | 367,743          | 28.3%      | 5.50           | 44.00            | 190              |
| 2000  | 466,365          | 26.8%      | 5.50           | 45.00            | 228              |
| 2001  | 604,919          | 29.7%      | 5.50           | 48.00            | 304              |
| 2002  | 786,524          | 30.0%      | 5.80           | 50.00            | 379              |
| 2003  | 701,014          | -10.9%     | 5.50           | 50.00            | 347              |
| 2004  | 1,055,202        | 50.5%      | 6.30           | 52.00            | 578              |
| 2005  | 1,421,615        | 34.7%      | 6.30           | 52.00            | 832              |
| 2006  | 1,700,041        | 19.6%      | 6.50           | 54.79            | 1,049            |
| 2007  | 2,015,128        | 18.5%      | 6.50           | 54.79            | 1,400            |
| 2008  | 2,125,465        | 5.5%       | 6.65           | 62.68            | 1,595            |
| 2009  | 2,161,577        | 1.7%       | 6.45           | 63.57            | 1,561            |
| 2010  | 2,508,289        | 16.0%      | 6.45           | 65.74            | 1,786            |

### International tourist arrivals to Cambodia

| Destination                           | Months       | 2007             | 2008             | 2009             | 2010             | 2011             | change (%)<br>2011*/10 |
|---------------------------------------|--------------|------------------|------------------|------------------|------------------|------------------|------------------------|
| <b>Cambodia</b>                       | <b>Q1</b>    | <b>550,813</b>   | <b>644,205</b>   | <b>622,288</b>   | <b>683,692</b>   | <b>778,467</b>   | <b>13.9</b>            |
| <i>International tourist arrivals</i> | January      | 194,932          | 223,581          | 218,691          | 232,590          | 274,471          | 18.0                   |
| <i>by all means of</i>                | February     | 177,130          | 214,902          | 200,789          | 222,354          | 255,499          | 14.9                   |
| <i>transportations</i>                | March        | 178,751          | 205,722          | 202,808          | 228,748          | 248,497          | 8.6                    |
|                                       | <b>Q2</b>    | <b>424,536</b>   | <b>454,031</b>   | <b>464,230</b>   | <b>537,464</b>   | <b>606,562</b>   | <b>12.9</b>            |
|                                       | April        | 165,347          | 173,903          | 177,955          | 200,965          | 223,032          | 11.0                   |
|                                       | May          | 132,512          | 149,275          | 145,564          | 170,164          | 190,258          | 11.8                   |
|                                       | June         | 126,677          | 130,853          | 140,711          | 166,335          | 193,272          | 16.2                   |
|                                       | <b>Q3</b>    | <b>431,815</b>   | <b>449,693</b>   | <b>487,422</b>   | <b>582,024</b>   | <b>699,760</b>   | <b>20.2</b>            |
|                                       | July         | 143,310          | 148,449          | 163,817          | 202,349          | 239,527          | 18.4                   |
|                                       | August       | 151,478          | 156,098          | 171,668          | 206,563          | 250,429          | 21.2                   |
|                                       | September    | 137,027          | 145,146          | 151,937          | 173,112          | 209,804          | 21.2                   |
|                                       | <b>Q4</b>    | <b>607,964</b>   | <b>577,536</b>   | <b>587,637</b>   | <b>705,109</b>   | <b>797,073</b>   | <b>13.0</b>            |
|                                       | October      | 160,235          | 156,718          | 157,105          | 205,515          | 233,190          | 13.5                   |
|                                       | November     | 194,646          | 191,549          | 195,570          | 249,892          | 265,539          | 6.3                    |
|                                       | December     | 253,083          | 229,269          | 234,962          | 249,702          | 298,344          | 19.5                   |
|                                       | <b>Total</b> | <b>2,015,128</b> | <b>2,125,465</b> | <b>2,161,577</b> | <b>2,508,289</b> | <b>2,881,862</b> | <b>14.9</b>            |



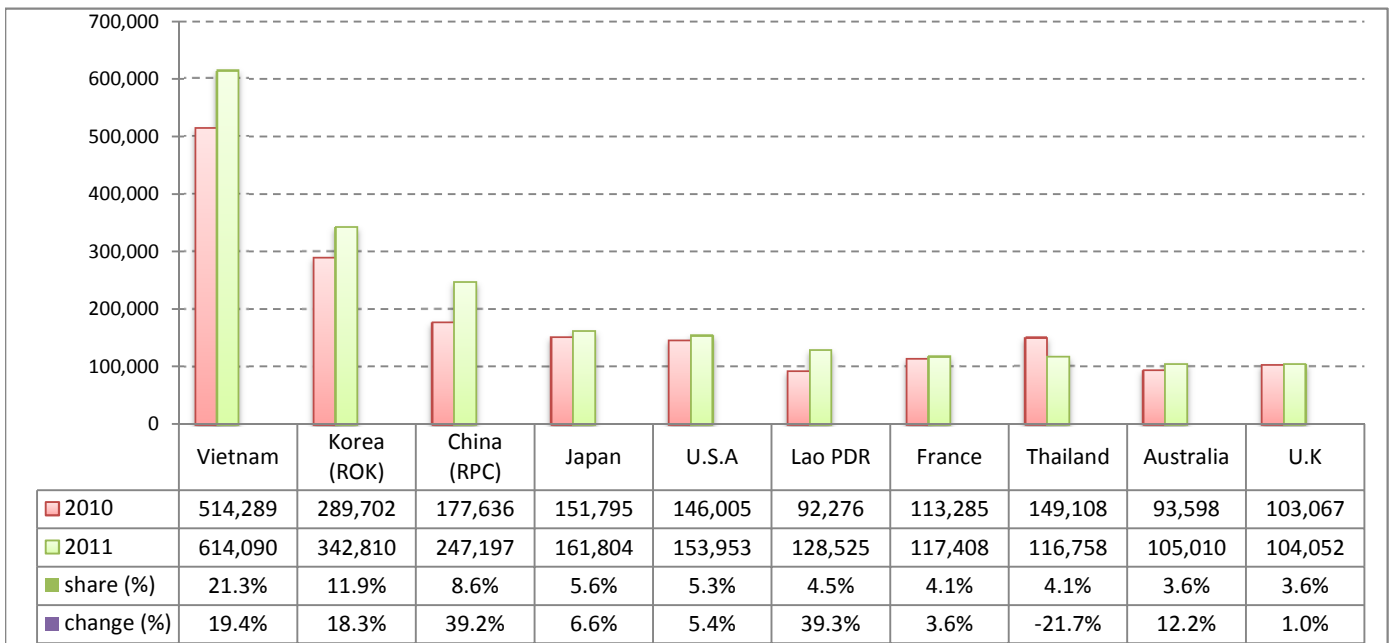
## Executive Summary Report in the 2011

I. International tourist arrivals to Cambodia in January - December was: **2,881,862**

### II. Mode of arrivals

|                            | visitors         | share (%)    |
|----------------------------|------------------|--------------|
| <b>Air</b>                 | <b>1,480,407</b> | <b>51.4</b>  |
| Phnom Penh Int'l Airport   | 645,235          | 22.4         |
| Siem Reap Int'l Airport    | 835,172          | 29.0         |
| <b>Land and Water ways</b> | <b>1,401,455</b> | <b>48.6</b>  |
| Land                       | 1,320,311        | 45.8         |
| Water ways                 | 81,144           | 2.8          |
| <b>Total</b>               | <b>2,881,862</b> | <b>100.0</b> |

### III. Top ten markets arrivals in January - December 2011



### IV. International tourist arrivals to Cambodia in January - December 2011

|                            | Inbound          |                  | share (%)    |              | change (%)  |
|----------------------------|------------------|------------------|--------------|--------------|-------------|
|                            | 2010             | 2011             | 2010         | 2011         | 2011*/10    |
| <b>Air</b>                 | <b>1,304,300</b> | <b>1,480,407</b> | <b>52.0</b>  | <b>51.4</b>  | <b>13.5</b> |
| Phnom Penh Int'l Airport   | 591,628          | 645,235          | 23.6         | 22.4         | 9.1         |
| Siem Reap Int'l Airport    | 712,672          | 835,172          | 28.4         | 29.0         | 17.2        |
| <b>Land and Water ways</b> | <b>1,203,989</b> | <b>1,401,455</b> | <b>48.0</b>  | <b>48.6</b>  | <b>16.4</b> |
| Land                       | 1,125,974        | 1,320,311        | 44.9         | 45.8         | 17.3        |
| Water ways                 | 78,015           | 81,144           | 3.1          | 2.8          | 4.0         |
| <b>Total</b>               | <b>2,508,289</b> | <b>2,881,862</b> | <b>100.0</b> | <b>100.0</b> | <b>14.9</b> |

### V. Remark: Percentage share of international tourist arrivals at destinations in January - December 2011

|                                 | Arrivals         |                  | share (%)    |              | change (%)  |
|---------------------------------|------------------|------------------|--------------|--------------|-------------|
|                                 | 2010             | 2011             | 2010         | 2011         | 2011*/10    |
| Phnom Penh & Other Destinations | 1,203,033        | 1,271,786        | 48.0         | 44.1         | 5.7         |
| Siem Reap Province              | 1,305,256        | 1,610,076        | 52.0         | 55.9         | 23.4        |
| <b>Total</b>                    | <b>2,508,289</b> | <b>2,881,862</b> | <b>100.0</b> | <b>100.0</b> | <b>14.9</b> |

### VI. Outbound tourists departures in January - December 2011

|                                 | Outbound  |           | change (%) |
|---------------------------------|-----------|-----------|------------|
|                                 | 2010      | 2011      | 2011*/10   |
| Cambodian outbound tourists     | 504,990   | 709,616   | 40.5       |
| International outbound tourists | 2,354,832 | 2,847,309 | 20.9       |

## International Tourist Arrivals to Cambodia by Country of Residence in January - December 2011

(by all mean of transportations)

| Regions<br>Country of Residence | 2010             | 2011             |                |               | Total            | Female           | share        | change      |
|---------------------------------|------------------|------------------|----------------|---------------|------------------|------------------|--------------|-------------|
|                                 |                  | Purpose of Visit |                |               |                  |                  | (%)          | (%)         |
|                                 |                  | Tourists         | Business       | Other         |                  |                  | 2011*        | 2011*/10    |
| <b>GRAND TOTAL</b>              | <b>2,508,289</b> | <b>2,706,743</b> | <b>143,385</b> | <b>31,734</b> | <b>2,881,862</b> | <b>1,303,117</b> | <b>100.0</b> | <b>14.9</b> |
| <b>Asia and the Pacific</b>     | <b>1,807,398</b> | <b>1,975,951</b> | <b>114,055</b> | <b>16,595</b> | <b>2,106,601</b> | <b>976,944</b>   | <b>73.1</b>  | <b>16.6</b> |
| <b>ASEAN</b>                    | <b>962,570</b>   | <b>1,060,394</b> | <b>33,054</b>  | <b>7,663</b>  | <b>1,101,111</b> | <b>504,656</b>   | <b>38.2</b>  | <b>14.4</b> |
| Brunei Darussalam               | 460              | 360              | 17             | 104           | 481              | 203              | 0.0          | 4.6         |
| Indonesia                       | 12,636           | 12,378           | 2,887          | 552           | 15,817           | 6,046            | 0.5          | 25.2        |
| Lao PDR                         | 92,276           | 127,772          | 135            | 618           | 128,525          | 87,976           | 4.5          | 39.3        |
| Malaysia                        | 89,952           | 96,554           | 6,100          | 275           | 102,929          | 36,803           | 3.6          | 14.4        |
| Myanmar                         | 2,614            | 3,589            | 466            | 144           | 4,199            | 1,755            | 0.1          | 60.6        |
| Philippines                     | 56,156           | 64,269           | 5,359          | 1,090         | 70,718           | 42,740           | 2.5          | 25.9        |
| Singapore                       | 45,079           | 45,378           | 2,008          | 208           | 47,594           | 18,226           | 1.7          | 5.6         |
| Thailand                        | 149,108          | 105,671          | 9,325          | 1,762         | 116,758          | 41,738           | 4.1          | -21.7       |
| Vietnam                         | 514,289          | 604,423          | 6,757          | 2,910         | 614,090          | 269,169          | 21.3         | 19.4        |
| <b>Eastern Asia</b>             | <b>715,045</b>   | <b>778,361</b>   | <b>71,581</b>  | <b>5,755</b>  | <b>855,697</b>   | <b>411,173</b>   | <b>29.7</b>  | <b>19.7</b> |
| China (RPC)                     | 177,636          | 203,399          | 42,100         | 1,698         | 247,197          | 113,482          | 8.6          | 39.2        |
| Hong Kong SAR                   | 4,378            | 4,986            | 271            | 9             | 5,266            | 2,450            | 0.2          | 20.3        |
| Japan                           | 151,795          | 153,682          | 6,051          | 2,071         | 161,804          | 76,766           | 5.6          | 6.6         |
| Korea (ROK)                     | 289,702          | 327,294          | 13,608         | 1,908         | 342,810          | 173,146          | 11.9         | 18.3        |
| Mongolia                        | 305              | 207              | 13             | 37            | 257              | 131              | 0.0          | -15.7       |
| Taiwan, China                   | 91,229           | 88,793           | 9,538          | 32            | 98,363           | 45,198           | 3.4          | 7.8         |
| <b>Southern Asia</b>            | <b>18,584</b>    | <b>15,913</b>    | <b>3,268</b>   | <b>935</b>    | <b>20,116</b>    | <b>5,300</b>     | <b>0.7</b>   | <b>8.2</b>  |
| Afghanistan                     | 180              | 77               | 8              | 28            | 113              | 18               | 0.0          | -37.2       |
| Bangladesh                      | 1,658            | 975              | 215            | 126           | 1,316            | 142              | 0.0          | -20.6       |
| Bhutan                          |                  | 48               | 7              | 26            | 81               | 26               | 0.0          |             |
| India                           | 13,542           | 12,601           | 2,188          | 451           | 15,240           | 4,397            | 0.5          | 12.5        |
| Nepal                           | 1,081            | 826              | 218            | 112           | 1,156            | 257              | 0.0          | 6.9         |
| Pakistan                        | 1,092            | 622              | 392            | 99            | 1,113            | 212              | 0.0          | 1.9         |
| Srilanka                        | 1,031            | 764              | 240            | 93            | 1,097            | 248              | 0.0          | 6.4         |
| <b>Western Asia</b>             | <b>0</b>         | <b>1,785</b>     | <b>144</b>     | <b>16</b>     | <b>1,945</b>     | <b>1,089</b>     | <b>0.1</b>   |             |
| Kazakhstan                      |                  | 1,097            | 115            | 12            | 1,224            | 578              | 0.0          |             |
| Uzbekistan                      |                  | 688              | 29             | 4             | 721              | 511              | 0.0          |             |
| <b>Oceania</b>                  | <b>107,306</b>   | <b>113,724</b>   | <b>5,860</b>   | <b>2,018</b>  | <b>121,602</b>   | <b>53,307</b>    | <b>4.2</b>   | <b>13.3</b> |
| Australia                       | 93,598           | 98,254           | 4,963          | 1,793         | 105,010          | 46,592           | 3.6          | 12.2        |
| Fiji                            |                  | 79               | 26             | 12            | 117              | 39               | 0.0          |             |
| New Zealand                     | 13,708           | 15,391           | 871            | 213           | 16,475           | 6,676            | 0.6          | 20.2        |
| Other Asia & the Pacific        | 3,893            | 5,774            | 148            | 208           | 6,130            | 1,419            | 0.2          | 57.5        |
| <b>Europe</b>                   | <b>489,400</b>   | <b>515,600</b>   | <b>18,591</b>  | <b>8,672</b>  | <b>542,863</b>   | <b>228,053</b>   | <b>18.8</b>  | <b>10.9</b> |
| <b>Northern Europe</b>          | <b>145,767</b>   | <b>143,372</b>   | <b>6,098</b>   | <b>2,130</b>  | <b>151,600</b>   | <b>58,327</b>    | <b>5.3</b>   | <b>4.0</b>  |
| Denmark                         | 7,810            | 8,903            | 326            | 123           | 9,352            | 3,816            | 0.3          | 19.7        |
| Finland                         | 5,244            | 5,996            | 229            | 185           | 6,410            | 2,431            | 0.2          | 22.2        |
| Iceland                         | 229              | 342              | 10             | 3             | 355              | 121              | 0.0          | 55.0        |
| Ireland                         | 8,567            | 8,142            | 282            | 117           | 8,541            | 3,420            | 0.3          | -0.3        |
| Norway                          | 7,774            | 7,714            | 304            | 110           | 8,128            | 3,297            | 0.3          | 4.6         |
| Sweden                          | 13,076           | 14,061           | 491            | 210           | 14,762           | 5,688            | 0.5          | 12.9        |
| United Kingdom                  | 103,067          | 98,214           | 4,456          | 1,382         | 104,052          | 39,554           | 3.6          | 1.0         |
| <b>Western Europe</b>           | <b>238,812</b>   | <b>226,787</b>   | <b>9,985</b>   | <b>5,239</b>  | <b>242,011</b>   | <b>98,261</b>    | <b>8.4</b>   | <b>1.3</b>  |
| Austria                         | 8,547            | 7,337            | 173            | 91            | 7,601            | 2,994            | 0.3          | -11.1       |
| Belgium                         | 14,295           | 13,095           | 488            | 322           | 13,905           | 5,527            | 0.5          | -2.7        |
| France                          | 113,285          | 107,957          | 6,383          | 3,068         | 117,408          | 49,485           | 4.1          | 3.6         |
| Germany                         | 62,864           | 60,597           | 1,651          | 1,150         | 63,398           | 24,630           | 2.2          | 0.8         |
| Luxembourg                      | 639              | 470              | 9              | 18            | 497              | 201              | 0.0          | -22.2       |
| Monaco                          |                  | 79               | 0              | 3             | 82               | 39               | 0.0          |             |
| Netherlands                     | 23,537           | 21,667           | 685            | 373           | 22,725           | 8,882            | 0.8          | -3.4        |
| Switzerland                     | 15,645           | 15,585           | 596            | 214           | 16,395           | 6,503            | 0.6          | 4.8         |
| <b>Eastern Europe</b>           | <b>54,401</b>    | <b>90,073</b>    | <b>1,151</b>   | <b>369</b>    | <b>91,593</b>    | <b>48,210</b>    | <b>3.2</b>   | <b>68.4</b> |
| Bulgaria                        | 445              | 442              | 11             | 17            | 470              | 226              | 0.0          | 5.6         |
| Czech Republic                  | 3,113            | 3,251            | 41             | 18            | 3,310            | 1,436            | 0.1          | 6.3         |
| Estonia                         |                  | 911              | 24             | 19            | 954              | 379              | 0.0          |             |
| Hungary                         | 2,740            | 2,510            | 58             | 17            | 2,585            | 1,194            | 0.1          | -5.7        |
| Lithuania                       |                  | 1,226            | 11             | 1             | 1,238            | 661              | 0.0          |             |
| Poland                          | 8,712            | 9,036            | 54             | 61            | 9,151            | 4,633            | 0.3          | 5.0         |
| Romania                         | 1,171            | 1,055            | 19             | 7             | 1,081            | 568              | 0.0          | -7.7        |
| Russian Federation              | 34,170           | 66,791           | 781            | 175           | 67,747           | 36,577           | 2.4          | 98.3        |
| Slovakia                        | 1,286            | 1,205            | 29             | 35            | 1,269            | 522              | 0.0          | -1.3        |
| Ukraine                         | 2,764            | 3,646            | 123            | 19            | 3,788            | 2,014            | 0.1          | 37.0        |

## International Tourist Arrivals to Cambodia by Country of Residence in January - December 2011

(by all mean of transportations)

| Regions<br>Country of Residence | 2010             |                  | 2011             |               |                  | share            |              | change      |          |
|---------------------------------|------------------|------------------|------------------|---------------|------------------|------------------|--------------|-------------|----------|
|                                 |                  |                  | Purpose of Visit |               |                  | Total            | Female       | (%)         | (%)      |
|                                 |                  |                  | Tourists         | Business      | Other            |                  |              | 2011*       | 2011*/10 |
| <b>GRAND TOTAL</b>              | <b>2,508,289</b> | <b>2,706,743</b> | <b>143,385</b>   | <b>31,734</b> | <b>2,881,862</b> | <b>1,303,117</b> | <b>100.0</b> | <b>14.9</b> |          |
| <b>Southern Europe</b>          | <b>47,134</b>    | <b>50,281</b>    | <b>1,253</b>     | <b>774</b>    | <b>52,308</b>    | <b>22,149</b>    | <b>1.8</b>   | <b>11.0</b> |          |
| Croatia                         | 470              | 496              | 25               | 11            | 532              | 209              | 0.0          | 13.2        |          |
| Greece                          | 1,395            | 1,120            | 35               | 13            | 1,168            | 441              | 0.0          | -16.3       |          |
| Italy                           | 19,808           | 20,017           | 555              | 265           | 20,837           | 7,982            | 0.7          | 5.2         |          |
| Portugal                        | 2,554            | 2,991            | 56               | 34            | 3,081            | 1,479            | 0.1          | 20.6        |          |
| Serbia                          |                  | 378              | 12               | 18            | 408              | 171              | 0.0          |             |          |
| Slovenia                        | 692              | 841              | 22               | 11            | 874              | 374              | 0.0          | 26.3        |          |
| Spain                           | 19,163           | 21,513           | 337              | 273           | 22,123           | 10,444           | 0.8          | 15.4        |          |
| Turkey                          | 3,052            | 2,925            | 211              | 149           | 3,285            | 1,049            | 0.1          | 7.6         |          |
| Other Europe                    | 3,286            | 5,087            | 104              | 160           | 5,351            | 1,106            | 0.2          | 62.8        |          |
| <b>Americas</b>                 | <b>199,089</b>   | <b>201,438</b>   | <b>9,976</b>     | <b>6,086</b>  | <b>217,500</b>   | <b>93,063</b>    | <b>7.5</b>   | <b>9.2</b>  |          |
| Argentina                       | 2,212            | 5,139            | 37               | 47            | 5,223            | 2,636            | 0.2          | 136.1       |          |
| Brazil                          | 2,490            | 3,526            | 36               | 54            | 3,616            | 1,743            | 0.1          | 45.2        |          |
| Canada                          | 38,718           | 40,029           | 1,862            | 571           | 42,462           | 18,592           | 1.5          | 9.7         |          |
| Chile                           | 2,240            | 2,494            | 108              | 31            | 2,633            | 1,212            | 0.1          | 17.5        |          |
| Colombia                        | 1,060            | 1,993            | 41               | 26            | 2,060            | 1,015            | 0.1          | 94.3        |          |
| Costa Rica                      |                  | 182              | 12               | 7             | 201              | 112              | 0.0          |             |          |
| Ecuador                         |                  | 160              | 18               | 6             | 184              | 94               | 0.0          |             |          |
| Mexico                          | 3,157            | 3,393            | 62               | 31            | 3,486            | 1,685            | 0.1          | 10.4        |          |
| Peru                            | 468              | 451              | 13               | 19            | 483              | 218              | 0.0          | 3.2         |          |
| United States                   | 146,005          | 141,085          | 7,707            | 5,161         | 153,953          | 64,599           | 5.3          | 5.4         |          |
| Uruguay                         | 333              | 501              | 3                | 8             | 512              | 283              | 0.0          | 53.8        |          |
| Other Americas                  | 2,406            | 2,485            | 77               | 125           | 2,687            | 874              | 0.1          | 11.7        |          |
| <b>Africa</b>                   | <b>4,627</b>     | <b>5,253</b>     | <b>510</b>       | <b>230</b>    | <b>5,993</b>     | <b>2,126</b>     | <b>0.2</b>   | <b>29.5</b> |          |
| Cameroon                        | 493              | 369              | 7                | 12            | 388              | 76               | 0.0          | -21.3       |          |
| Congo                           |                  | 150              | 1                | 6             | 157              | 35               | 0.0          |             |          |
| Ghana                           | 503              | 375              | 20               | 20            | 415              | 55               | 0.0          | -17.5       |          |
| Kenya                           |                  | 225              | 11               | 47            | 283              | 131              | 0.0          |             |          |
| Liberia                         |                  | 332              | 3                | 0             | 335              | 66               | 0.0          |             |          |
| Nigeria                         | 769              | 247              | 258              | 23            | 528              | 74               | 0.0          | -31.3       |          |
| Sudan                           | 37               | 34               | 2                | 12            | 48               | 15               | 0.0          | 29.7        |          |
| South Africa                    | 2,459            | 2,988            | 189              | 39            | 3,216            | 1,336            | 0.1          | 30.8        |          |
| Uganda                          |                  | 279              | 3                | 17            | 299              | 208              | 0.0          |             |          |
| Other Africa                    | 366              | 254              | 16               | 54            | 324              | 130              | 0.0          | -11.5       |          |
| <b>Middle East</b>              | <b>7,775</b>     | <b>8,501</b>     | <b>253</b>       | <b>151</b>    | <b>8,905</b>     | <b>2,931</b>     | <b>0.3</b>   | <b>14.5</b> |          |
| Egypt                           | 220              | 159              | 11               | 26            | 196              | 37               | 0.0          | -10.9       |          |
| Iran                            | 518              | 676              | 16               | 4             | 696              | 107              | 0.0          | 34.4        |          |
| Iraq                            |                  | 70               | 3                | 18            | 91               | 21               | 0.0          |             |          |
| Israel                          | 6,186            | 6,401            | 202              | 41            | 6,644            | 2,595            | 0.2          | 7.4         |          |
| Kuwait                          | 543              | 529              | 0                | 1             | 530              | 13               | 0.0          | -2.4        |          |
| Oman                            |                  | 102              | 0                | 5             | 107              | 10               | 0.0          |             |          |
| Palestine                       |                  | 31               | 3                | 0             | 34               | 3                | 0.0          |             |          |
| Qatar                           |                  | 61               | 1                | 0             | 62               | 23               | 0.0          |             |          |
| Saudi Arabia                    | 64               | 66               | 6                | 6             | 78               | 20               | 0.0          | 21.9        |          |
| United Arab Emirates            |                  | 150              | 0                | 5             | 155              | 17               | 0.0          |             |          |
| Yemen                           |                  | 84               | 6                | 8             | 98               | 13               | 0.0          |             |          |
| Other Middle East               | 244              | 172              | 5                | 37            | 214              | 72               | 0.0          | -12.3       |          |

### Remark:

|  |           |
|--|-----------|
| - Cambodian Overseas:                        | 79,261    |
| - Cambodian Residence:                       | 664,081   |
| - Cambodian outbound tourist departures:     | 709,616   |
| - International outbound tourist departures: | 2,847,309 |

**COMPILED BY:**

1. Mr. Kong Sopheareak

Director  
Statistics & Tourism Information Department  
Fax: +855 23 885003  
E-mail: kong@mot.gov.kh

2. Mr. Horth Vanny

Chief of Tourism Statistics Office  
Compile and data analysis  
Tel.: +855 12 827664