



**KINGDOM OF CAMBODIA
NATION RELIGION KING**



TOURISM STATISTICS REPORT

June 2010

MINISTRY OF TOURISM

Statistics and Tourism Information Department

No. A3, Street 169, Sangkat Veal Vong, Khan 7 Makara, Phnom Penh, Cambodia.

Fax: +855 23 885003

E-mail: info@mot.gov.kh

Web site: www.mot.gov.kh

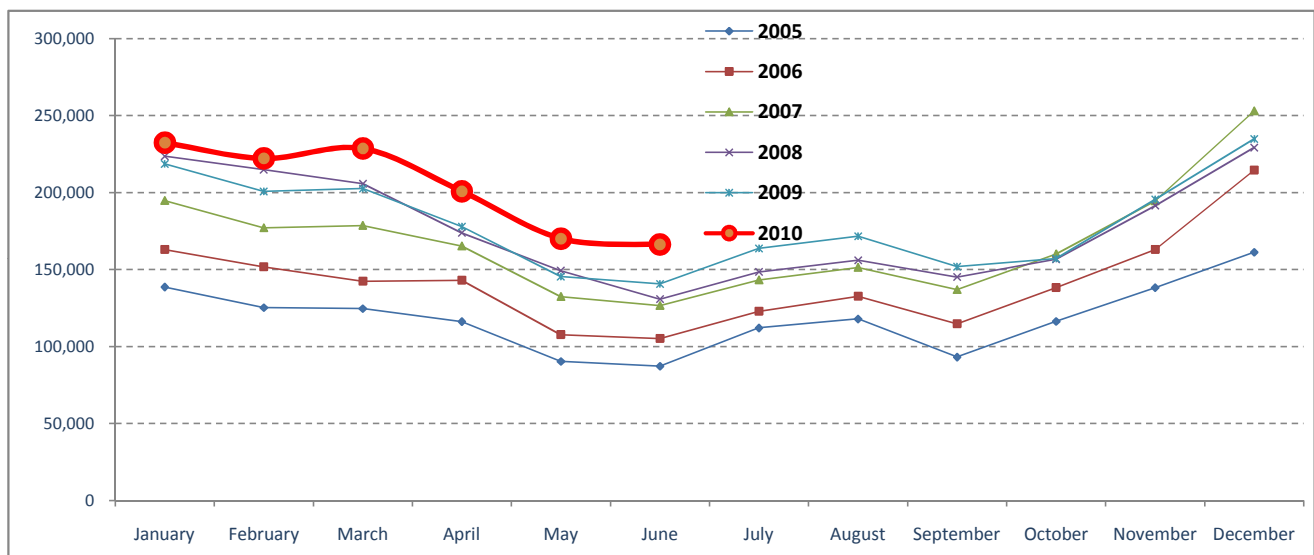
Tourism Highlights

Visitor Arrivals, Average Length of Stay, Hotels Occupancy and Tourism Receipts 1993 - 2009

Years	Visitor Arrivals		Average Length	Hotels Occupancy	Tourism Receipts
	number	change (%)	of Stay (days)	(%)	(million US\$)
1993	118,183	0.00	N/A	N/A	N/A
1994	176,617	49.44%	N/A	N/A	N/A
1995	219,680	24.38%	8.00	37.00	100
1996	260,489	18.58%	7.50	40.00	118
1997	218,843	-15.99%	6.40	30.00	103
1998	289,524	32.30%	5.20	40.00	166
1999	367,743	27.02%	5.50	44.00	190
2000	466,365	26.82%	5.50	45.00	228
2001	604,919	29.71%	5.50	48.00	304
2002	786,524	30.02%	5.80	50.00	379
2003	701,014	-10.87%	5.50	50.00	347
2004	1,055,202	50.53%	6.30	52.00	578
2005	1,421,615	34.72%	6.30	52.00	832
2006	1,700,041	19.59%	6.50	54.79	1,049
2007	2,015,128	18.53%	6.50	54.79	1,400
2008	2,125,465	5.48%	6.65	62.68	1,595
2009	2,161,577	1.70%	6.45	63.57	1,561

International visitor arrivals to Cambodia

Destination	Months	2005	2006	2007	2008	2009	2010	change(%) 2010*/09
Cambodia	Q1	388,670	457,305	550,813	644,205	622,288	683,692	9.87%
<i>Visitor arrivals by all means of transportation, include same-day visitors</i>	January	138,718	163,047	194,932	223,581	218,691	232,590	6.36%
	February	125,326	151,821	177,130	214,902	200,789	222,354	10.74%
	March	124,626	142,437	178,751	205,722	202,808	228,748	12.79%
	Q2	293,761	356,087	424,536	454,031	464,230	537,464	15.78%
	April	116,219	143,069	165,347	173,903	177,955	200,965	12.93%
	May	90,314	107,720	132,512	149,275	145,564	170,164	16.90%
	June	87,228	105,298	126,677	130,853	140,711	166,335	18.21%
	Q3	323,217	370,620	431,815	449,693	487,422	0	
	July	112,116	123,047	143,310	148,449	163,817		
	August	117,943	132,792	151,478	156,098	171,668		
	September	93,158	114,781	137,027	145,146	151,937		
	Q4	415,967	516,029	607,964	577,536	587,637	0	
	October	116,382	138,296	160,235	156,718	157,105		
	November	138,293	163,068	194,646	191,549	195,570		
	December	161,292	214,665	253,083	229,269	234,962		
	Total	1,421,615	1,700,041	2,015,128	2,125,465	2,161,577	1,221,156	12.39%

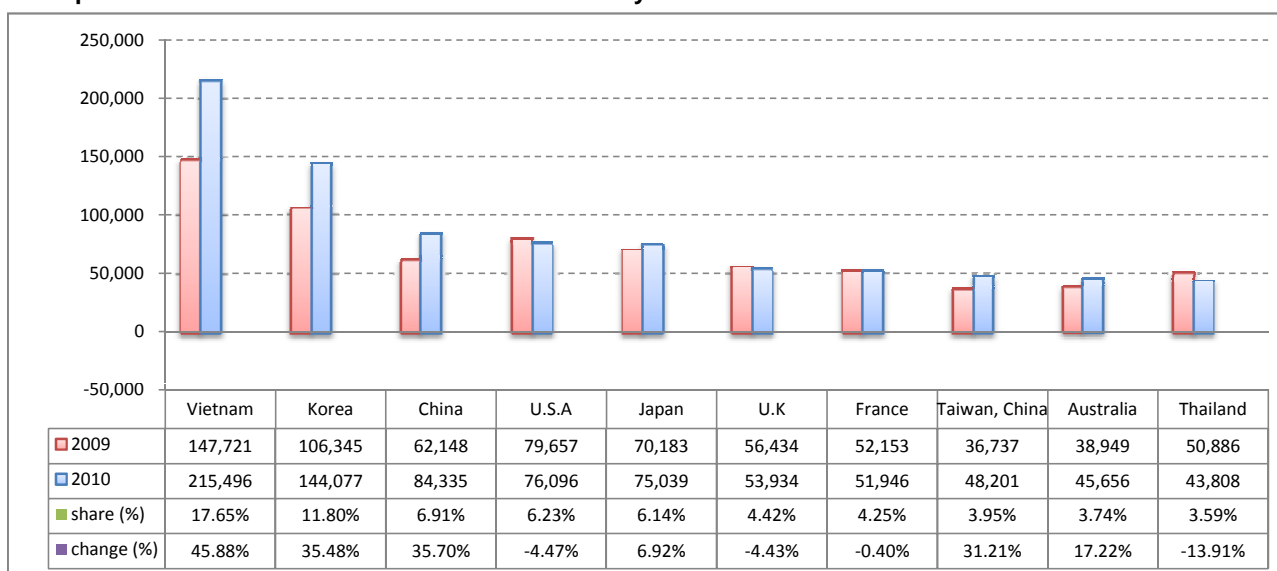


I. Visitor arrivals to Cambodia from January - June was: **1,221,156**

II. Mode of arrivals

	visitors	share (%)
- Air	632,373	51.78
Phnom Penh Int'l Airport	284,991	23.34
Siem Reap Int'l Airport	347,382	28.45
- Land and Water ways	522,694	42.80
Land	483,247	39.57
Boat	39,447	3.23
- Same-day visitors	66,089	5.41
Total	1,221,156	100.00

III. Top ten markets arrivals to Cambodia from January - June in 2010



IV. Visitor arrivals to Cambodia from January - June in 2010

Visitor arrivals	2009		2010		share (%)		change (%)
	2009	2010	2009	2010	2009	2010	2010*/09
Air	556,434	632,373	51.21	51.78	13.65		
Phnom Penh Int'l Airport	253,906	284,991	23.37	23.34	12.24		
Siem Reap Int'l Airport	302,528	347,382	27.84	28.45	14.83		
Land and Water ways	464,342	522,694	42.74	42.80	12.57		
Land	420,270	483,247	38.68	39.57	14.98		
Boat	44,072	39,447	4.06	3.23	-10.49		
Sub-Total	1,020,776	1,155,067	93.95	94.59	13.16		
Same-day visitors	65,742	66,089	6.05	5.41	0.53		
Total	1,086,518	1,221,156	100.00	100.00	12.39		

V. Remark: Percentage share of visitor arrivals at destinations from January - June in 2010

Visitor arrivals	2009		2010		share (%)		change (%)
	2009	2010	2009	2010	2009	2010	2010*/09
Phnom Penh & Other Destinations	583,490	580,212	53.70%	47.51%	-0.56%		
Siem Reap Province	503,028	640,944	46.30%	52.49%	27.42%		
Total	1,086,518	1,221,156	100.00%	100.00%	12.39%		

VI. Outbound tourist departures from January - June in 2010

Outbound tourists	2009	2010	change (%)
Cambodian outbound tourist departure:	146,056	232,317	59.06%
International outbound tourists departure:	995,284	1,154,035	15.95%

Visitor Arrivals to Cambodia by Country of Residence from January - June in 2010

(by all means of transportation)

Regions Country of Residence	2010				Total	Females	share	change
	2009	Purpose of Visit					(%)	(%)
		Tourists	Business	Others			2010*	2010*/09
GRAND TOTAL	1,086,518	1,131,803	71,134	18,219	1,221,156	530,583	100.00%	12.39%
Asia and the Pacific	671,469	737,266	57,796	9,453	804,515	354,742	65.88%	19.81%
ASEAN	335,252	362,511	20,743	4,547	387,801	167,164	31.76%	15.67%
Brunei Darussalam	165	112	3	102	217	85	0.02%	31.52%
Indonesia	4,199	3,889	1,552	257	5,698	2,285	0.47%	35.70%
Lao PDR	52,708	32,640	97	285	33,022	23,201	2.70%	-37.35%
Malaysia	34,928	35,930	2,801	173	38,904	13,342	3.19%	11.38%
Myanmar	1,160	928	243	55	1,226	482	0.10%	5.69%
Philippines	25,183	24,443	2,832	647	27,922	16,888	2.29%	10.88%
Singapore	18,302	20,518	880	110	21,508	7,863	1.76%	17.52%
Thailand	50,886	35,384	7,299	1,125	43,808	14,362	3.59%	-13.91%
Vietnam	147,721	208,667	5,036	1,793	215,496	88,656	17.65%	45.88%
Eastern Asia	277,139	318,703	32,320	2,878	353,901	161,459	28.98%	27.70%
China	62,148	64,856	18,828	651	84,335	36,261	6.91%	35.70%
Hong Kong, China	1,623	1,944	180	7	2,131	943	0.17%	31.30%
Japan	70,183	71,107	2,752	1,180	75,039	35,596	6.14%	6.92%
Mongolia	103	85	13	20	118	55	0.01%	14.56%
South Korea	106,345	136,498	6,585	994	144,077	66,801	11.80%	35.48%
Taiwan, China	36,737	44,213	3,962	26	48,201	21,803	3.95%	31.21%
Southern Asia	7,746	6,152	1,661	611	8,424	2,194	0.69%	8.75%
Afghanistan	99	117	8	18	143	37	0.01%	44.44%
Bangladesh	436	456	99	68	623	66	0.05%	42.89%
India	6,000	4,724	1,192	322	6,238	1,772	0.51%	3.97%
Nepal	447	313	103	56	472	128	0.04%	5.59%
Pakistan	419	282	110	65	457	67	0.04%	9.07%
Srilanka	345	260	149	82	491	124	0.04%	42.32%
Oceania	45,358	48,073	2,885	1,261	52,219	22,857	4.28%	15.13%
Australia	38,949	42,107	2,481	1,068	45,656	20,176	3.74%	17.22%
New Zealand	6,409	5,966	404	193	6,563	2,681	0.54%	2.40%
Others Asia & the Pacific	5,974	1,827	187	156	2,170	1,068	0.18%	-63.68%
Europe	234,439	225,690	8,220	5,067	238,977	96,648	19.57%	1.94%
Northern Europe	83,608	74,565	2,780	1,395	78,740	29,259	6.45%	-5.82%
Denmark	5,677	4,318	128	114	4,560	1,775	0.37%	-19.68%
Finland	3,963	3,069	87	112	3,268	1,143	0.27%	-17.54%
Iceland	120	136	10	3	149	39	0.01%	24.17%
Ireland	4,161	3,754	125	91	3,970	1,487	0.33%	-4.59%
Norway	4,193	4,389	109	97	4,595	1,830	0.38%	9.59%
Sweden	9,060	7,897	237	130	8,264	3,152	0.68%	-8.79%
United Kingdom	56,434	51,002	2,084	848	53,934	19,833	4.42%	-4.43%
Western Europe	112,238	106,181	4,450	2,919	113,550	45,980	9.30%	1.17%
Austria	3,995	4,326	78	47	4,451	1,819	0.36%	11.41%
Belgium	5,893	5,990	264	221	6,475	2,485	0.53%	9.88%
France	52,153	47,464	2,836	1,646	51,946	21,558	4.25%	-0.40%
Germany	31,819	30,735	663	628	32,026	12,725	2.62%	0.65%
Luxembourg	220	298	6	16	320	125	0.03%	45.45%
Netherlands	10,184	10,180	348	226	10,754	4,283	0.88%	5.60%
Switzerland	7,974	7,188	255	135	7,578	2,985	0.62%	-4.97%
Eastern Europe	17,244	26,090	410	211	26,711	13,208	2.19%	54.90%
Bulgaria	167	265	5	4	274	141	0.02%	64.07%
Czech	1,334	1,649	7	26	1,682	630	0.14%	26.09%
Hungary	1,396	1,812	21	8	1,841	864	0.15%	31.88%
Poland	2,751	3,964	15	22	4,001	1,994	0.33%	45.44%
Romania	318	778	7	5	790	421	0.06%	148.43%
Russia	9,873	15,742	307	117	16,166	8,179	1.32%	63.74%
Slovakia	526	547	7	23	577	255	0.05%	9.70%
Ukraine	879	1,333	41	6	1,380	724	0.11%	57.00%
Southern Europe	15,678	17,301	438	431	18,170	7,234	1.49%	15.89%
Croatia	153	195	6	15	216	97	0.02%	41.18%
Greece	672	783	10	12	805	325	0.07%	19.79%
Italy	7,878	8,548	193	183	8,924	3,346	0.73%	13.28%
Portugal	1,115	1,003	8	17	1,028	468	0.08%	-7.80%
Slovenia	294	337	3	6	346	158	0.03%	17.69%
Spain	4,713	5,558	129	167	5,854	2,586	0.48%	24.21%
Turkey	853	877	89	31	997	254	0.08%	16.88%
Others Europe	5,671	1,553	142	111	1,806	967	0.15%	-68.15%

Visitor Arrivals to Cambodia by Country of Residence from January - June in 2010

(by all means of transportation)

Regions Country of Residence	2009	2010			Total	Females	share	change
		Purpose of Visit					(%)	(%)
		Tourists	Business	Others			2010*	2010*/09
GRAND TOTAL	1,086,518	1,131,803	71,134	18,219	1,221,156	530,583	100.00%	12.39%
Americas	108,787	96,606	4,776	3,548	104,930	44,528	8.59%	-3.55%
Argentina	913	1,167	15	19	1,201	634	0.10%	31.54%
Brazil	1,176	1,255	18	16	1,289	649	0.11%	9.61%
Canada	20,292	20,185	967	395	21,547	9,297	1.76%	6.18%
Chile	1,224	1,117	19	8	1,144	550	0.09%	-6.54%
Colombia	367	503	8	19	530	266	0.04%	44.41%
Mexico	1,172	1,459	21	10	1,490	710	0.12%	27.13%
Peru	187	196	8	15	219	103	0.02%	17.11%
United States	79,657	69,506	3,613	2,977	76,096	31,561	6.23%	-4.47%
Uruguay	265	267	0	0	267	156	0.02%	0.75%
Others Americas	3,534	951	107	89	1,147	602	0.09%	-67.54%
Africa	2,646	2,019	250	88	2,357	741	0.19%	-10.92%
Cameroon	565	273	14	4	291	54	0.02%	-48.50%
Ghana	321	270	7	11	288	39	0.02%	-10.28%
Nigeria	575	271	114	10	395	25	0.03%	-31.30%
Sudan	17	15	2	7	24	2	0.00%	41.18%
South Africa	968	1,050	94	20	1,164	529	0.10%	20.25%
Others Africa	200	140	19	36	195	92	0.02%	-2.50%
Middle East	3,435	4,133	92	63	4,288	1,575	0.35%	24.83%
Egypt	93	110	4	9	123	18	0.01%	32.26%
Iran	156	236	0	9	245	55	0.02%	57.05%
Israel	2,828	3,451	76	17	3,544	1,427	0.29%	25.32%
Kuwait	187	216	1	5	222	15	0.02%	18.72%
Palestine	0	0	0	0		0		
Saudi Arabia	32	20	2	2	24	1	0.00%	-25.00%
United Arab Emirates	0	0	0	0		0		
Others Middle East	139	100	9	21	130	59	0.01%	-6.47%
Same-day visitors	65,742	66,089	0	0	66,089	32,349	5.41%	0.53%

Remark:

- Cambodian Overseas:	39,277
- Cambodian Residence:	197,252
- Cambodian outbound tourist departures:	232,317
- International outbound tourist departures:	1,154,035

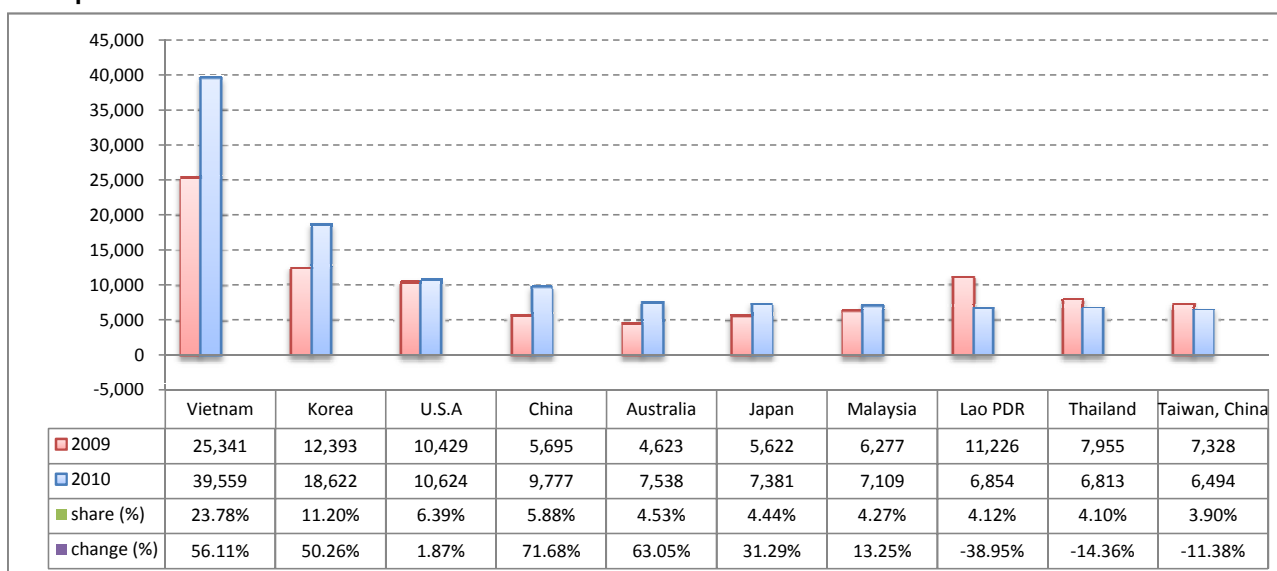
I. Visitor arrivals to Cambodia in June was:

166,335

II. Mode of arrivals

	visitors	share (%)
- Air	79,850	48.01
Phnom Penh Int'l Airport	41,084	24.70
Siem Reap Int'l Airport	38,766	23.31
- Land and Water ways	79,139	47.58
Land	74,041	44.51
Boat	5,098	3.06
- Same-day visitors	7,346	4.42
Total	166,335	100.00

III. Top ten markets arrivals to Cambodia in June 2010



IV. Visitor arrivals to Cambodia in June 2010

Visitor arrivals			share (%)		change (%)
	2009	2010	2009	2010	2010*/09
Air	63,851	79,850	45.38	48.01	25.06
Phnom Penh Int'l Airport	36,577	41,084	25.99	24.70	12.32
Siem Reap Int'l Airport	27,274	38,766	19.38	23.31	42.14
Land and Water ways	69,595	79,139	49.46	47.58	13.71
Land	66,151	74,041	47.01	44.51	11.93
Boat	3,444	5,098	2.45	3.06	48.03
Sub-Total	133,446	158,989	94.84	95.58	19.14
Same-day visitors	7,265	7,346	5.16	4.42	1.11
Total	140,711	166,335	100.00	100.00	18.21

V. Remark: Percentage share of visitor arrivals at destinations in June 2010

Visitor arrivals			share (%)		change (%)
	2009	2010	2009	2010	2010*/09
Phnom Penh & Other Destinations	84,487	91,194	60.04%	54.83%	7.94%
Siem Reap Province	56,224	75,141	39.96%	45.17%	33.65%
Total	140,711	166,335	100.00%	100.00%	18.21%

VI. Outbound tourist departures in June 2010

Outbound tourists	2009	2010	change (%)
Cambodian outbound tourist departure:	24,426	37,844	54.93%
International outbound tourists departure:	125,746	155,291	23.50%

Visitor Arrivals to Cambodia by Country of Residence in June 2010

(by all means of transportation)

Regions Country of Residence	2010						share	change
	2009	Purpose of Visit			Total	Females	(%)	(%)
		Tourists	Business	Others			2010*	2010*/09
GRAND TOTAL	140,711	152,840	10,733	2,762	166,335	71,076	100.00%	18.21%
Asia and the Pacific	97,730	113,279	8,541	1,438	123,258	53,692	74.10%	26.12%
ASEAN	58,704	66,559	3,139	698	70,396	30,977	42.32%	19.92%
Brunei Darussalam	22	12	1	38	51	10	0.03%	131.82%
Indonesia	611	588	307	34	929	345	0.56%	52.05%
Lao PDR	11,226	6,792	17	45	6,854	4,861	4.12%	-38.95%
Malaysia	6,277	6,631	447	31	7,109	2,577	4.27%	13.25%
Myanmar	115	116	31	14	161	69	0.10%	40.00%
Philippines	3,396	3,913	386	72	4,371	2,653	2.63%	28.71%
Singapore	3,761	4,374	158	17	4,549	1,883	2.73%	20.95%
Thailand	7,955	5,513	1,146	154	6,813	2,169	4.10%	-14.36%
Vietnam	25,341	38,620	646	293	39,559	16,410	23.78%	56.11%
Eastern Asia	31,215	37,588	4,708	415	42,711	18,457	25.68%	36.83%
China	5,695	7,036	2,619	122	9,777	3,872	5.88%	71.68%
Hong Kong, China	166	384	41	4	429	189	0.26%	158.43%
Japan	5,622	6,778	437	166	7,381	3,342	4.44%	31.29%
Mongolia	11	4	0	4	8	4	0.00%	-27.27%
South Korea	12,393	17,488	1,021	113	18,622	8,303	11.20%	50.26%
Taiwan, China	7,328	5,898	590	6	6,494	2,747	3.90%	-11.38%
Southern Asia	1,173	1,015	221	106	1,342	341	0.81%	14.41%
Afghanistan	8	13	0	0	13	4	0.01%	
Bangladesh	93	124	12	14	150	11	0.09%	61.29%
India	918	760	156	46	962	272	0.58%	4.79%
Nepal	61	46	17	6	69	19	0.04%	13.11%
Pakistan	50	46	20	12	78	12	0.05%	56.00%
Sri Lanka	43	26	16	28	70	23	0.04%	62.79%
Oceania	5,633	7,894	434	192	8,520	3,794	5.12%	51.25%
Australia	4,623	7,010	367	161	7,538	3,407	4.53%	63.05%
New Zealand	1,010	884	67	31	982	387	0.59%	-2.77%
Others Asia & the Pacific	1,005	223	39	27	289	123	0.17%	-71.24%
Europe	21,974	19,199	1,285	723	21,207	7,887	12.75%	-3.49%
Northern Europe	8,508	7,873	416	205	8,494	3,116	5.11%	-0.16%
Denmark	359	336	11	16	363	133	0.22%	1.11%
Finland	262	230	16	18	264	97	0.16%	0.76%
Iceland	12	9	1	3	13	1	0.01%	8.33%
Ireland	637	627	17	15	659	289	0.40%	3.45%
Norway	335	335	16	8	359	139	0.22%	7.16%
Sweden	535	482	34	21	537	190	0.32%	0.37%
United Kingdom	6,368	5,854	321	124	6,299	2,267	3.79%	-1.08%
Western Europe	9,992	8,123	703	431	9,257	3,243	5.57%	-7.36%
Austria	185	191	10	6	207	83	0.12%	11.89%
Belgium	572	392	49	22	463	153	0.28%	-19.06%
France	5,312	4,581	476	289	5,346	1,890	3.21%	0.64%
Germany	2,042	1,539	91	79	1,709	543	1.03%	-16.31%
Luxembourg	33	10	2	1	13	3	0.01%	-60.61%
Netherlands	953	973	40	20	1,033	401	0.62%	8.39%
Switzerland	895	437	35	14	486	170	0.29%	-45.70%
Eastern Europe	1,032	1,413	66	19	1,498	744	0.90%	45.16%
Bulgaria	11	15	1	2	18	5	0.01%	63.64%
Czech	73	51	1	1	53	24	0.03%	-27.40%
Hungary	65	72	3	0	75	32	0.05%	15.38%
Poland	163	218	1	1	220	99	0.13%	34.97%
Romania	15	27	0	2	29	18	0.02%	93.33%
Russia	639	927	50	8	985	498	0.59%	54.15%
Slovakia	14	23	2	4	29	11	0.02%	107.14%
Ukraine	52	80	8	1	89	57	0.05%	71.15%
Southern Europe	1,459	1,574	63	51	1,688	660	1.01%	15.70%
Croatia	16	9	1	3	13	4	0.01%	-18.75%
Greece	58	174	2	0	176	73	0.11%	203.45%
Italy	545	444	35	28	507	143	0.30%	-6.97%
Portugal	125	83	2	0	85	30	0.05%	-32.00%
Slovenia	15	12	0	0	12	4	0.01%	-20.00%
Spain	631	774	18	19	811	392	0.49%	28.53%
Turkey	69	78	5	1	84	14	0.05%	21.74%
Others Europe	983	216	37	17	270	124	0.16%	-72.53%

Visitor Arrivals to Cambodia by Country of Residence in June 2010

(by all means of transportation)

Regions Country of Residence	2009		2010				share	change
		Tourists	Purpose of Visit		Total	Females	(%)	(%)
			Business	Others			2010*	2010*/09
GRAND TOTAL	140,711	152,840	10,733	2,762	166,335	71,076	100.00%	18.21%
Americas	13,128	12,361	842	579	13,782	5,750	8.29%	4.98%
Argentina	90	109	6	1	116	51	0.07%	28.89%
Brazil	104	139	4	0	143	64	0.09%	37.50%
Canada	2,006	2,020	155	56	2,231	968	1.34%	11.22%
Chile	101	60	0	1	61	30	0.04%	-39.60%
Colombia	63	59	1	3	63	30	0.04%	0.00%
Mexico	163	235	10	4	249	122	0.15%	52.76%
Peru	36	25	3	3	31	15	0.02%	-13.89%
United States	10,429	9,506	629	489	10,624	4,354	6.39%	1.87%
Uruguay	17	12	0	0	12	6	0.01%	-29.41%
Others Americas	119	196	34	22	252	110	0.15%	111.76%
Africa	337	310	44	16	370	106	0.22%	9.79%
Cameroon	89	59	0	1	60	17	0.04%	-32.58%
Ghana	42	39	0	1	40	2	0.02%	-4.76%
Nigeria	76	59	23	1	83	5	0.05%	9.21%
Sudan	2	3	2	0	5	0	0.00%	150.00%
South Africa	117	140	16	6	162	74	0.10%	38.46%
Others Africa	11	10	3	7	20	8	0.01%	81.82%
Middle East	277	345	21	6	372	115	0.22%	34.30%
Egypt	5	12	2	0	14	1	0.01%	180.00%
Iran	17	38	0	1	39	10	0.02%	129.41%
Israel	217	251	14	1	266	96	0.16%	22.58%
Kuwait	25	33	1	0	34	3	0.02%	36.00%
Palestine	0							
Saudi Arabia	7	4	2	0	6	0	0.00%	-14.29%
United Arab Emirates	0							
Others Middle East	6	7	2	4	13	5	0.01%	116.67%
Same-day visitors	7,265	7,346	0	0	7,346	3,526	4.42%	1.11%

Remark:

- Cambodian Overseas:	6,283
- Cambodian Residence:	31,676
- Cambodian outbound tourist departures:	37,844
- International outbound tourist departures:	155,291

COMPILED BY:

1. Mr. Kong Sopheareak

Director
Statistics & Tourism Information Department
Fax: +855 23 885003
E-mail: kong@mot.gov.kh

2. Mr. Horth Vanny

Chief of Tourism Statistics Office
Compile and data analysis
Tel.: +855 12 827664